



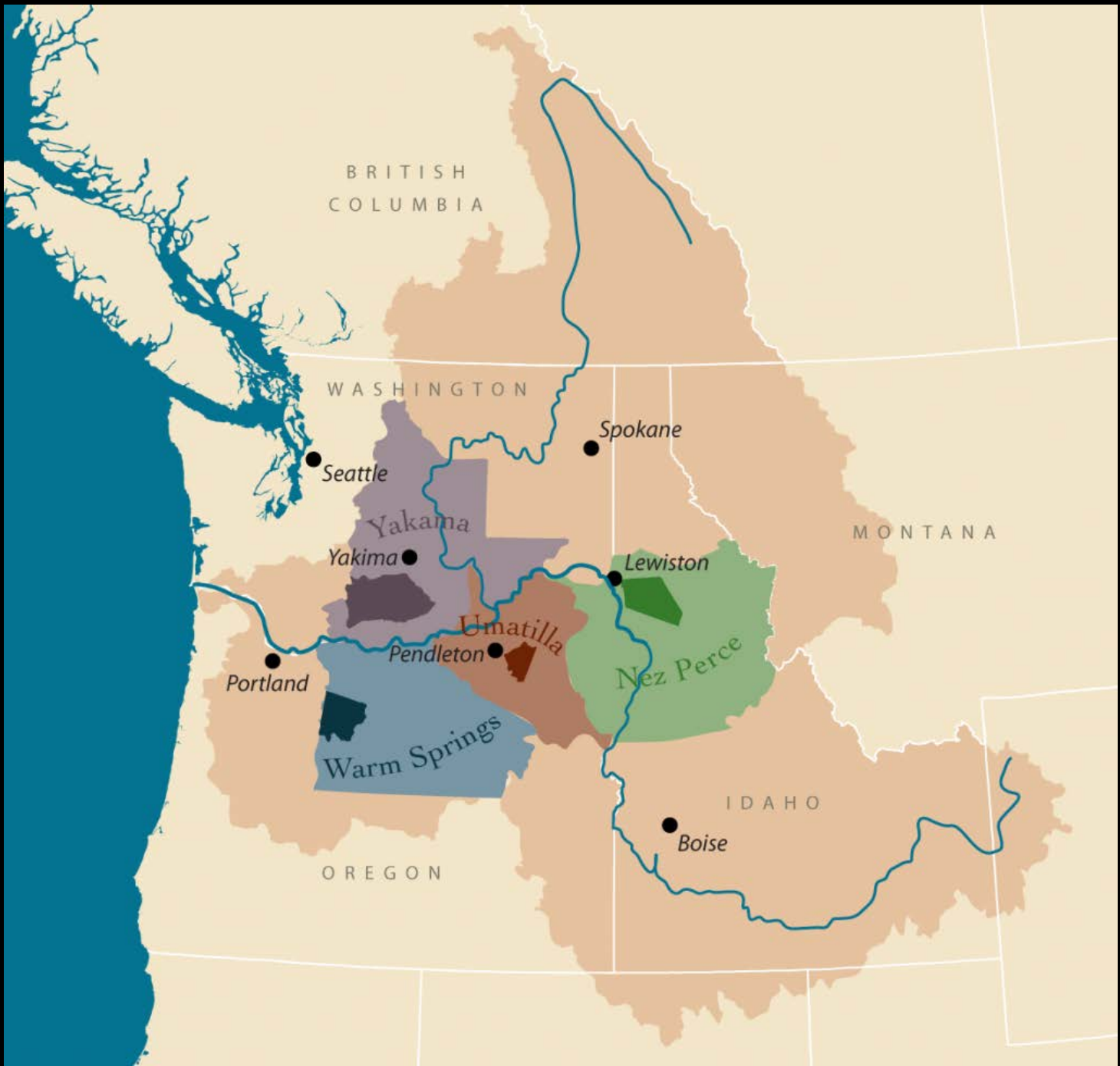
The Nimípuu

A Climate Change Resilience Story

Stefanie Krantz – Climate Change Coordinator
stefaniek@nezperce.org

Department of Energy Resilience Webinar, May 26, 2021







SALMON AND HIS PEOPLE



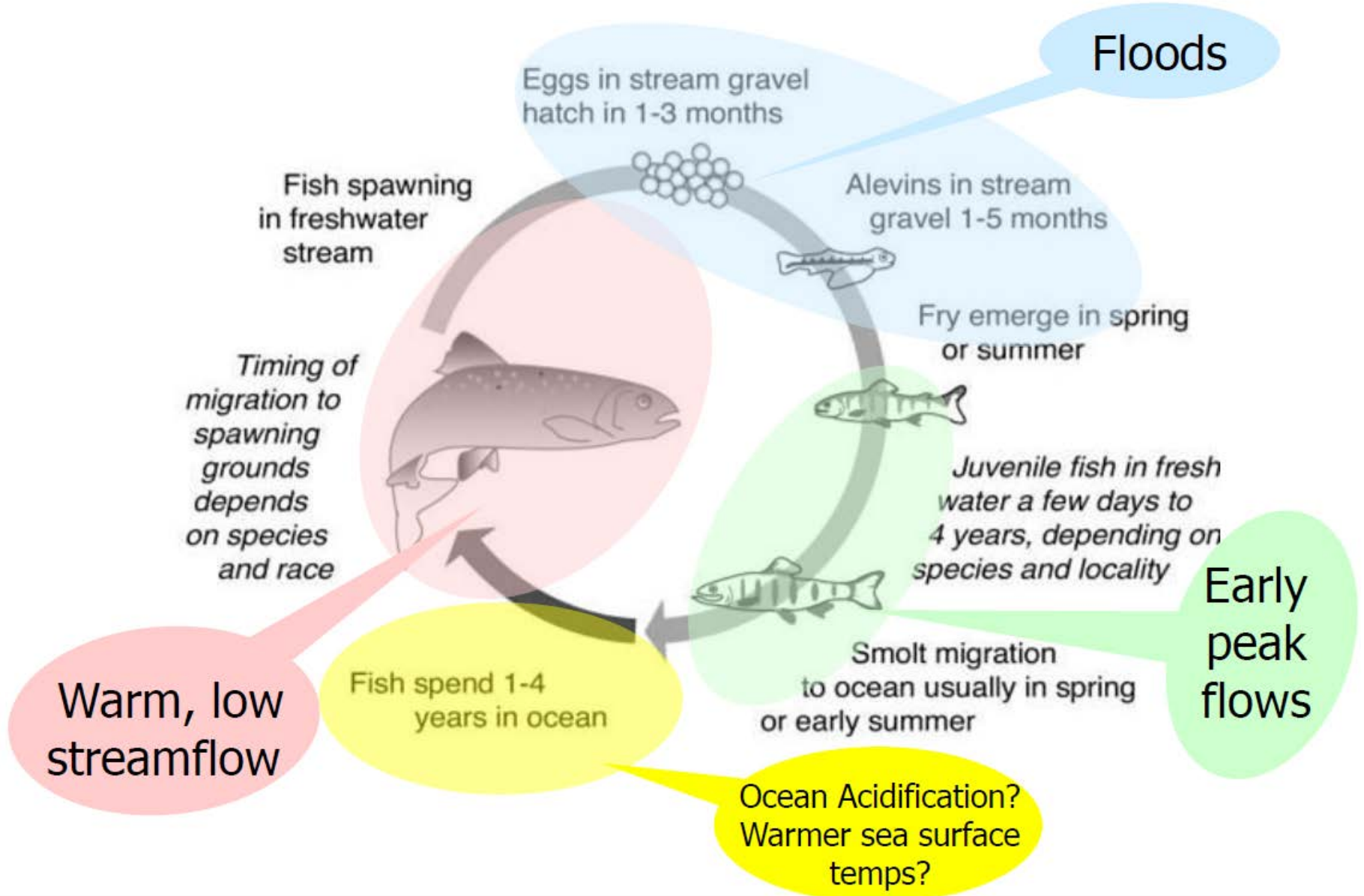
FISH & FISHING IN NEZ PERCE CULTURE

DAN LANDEEN
ALLEN PINKHAM



Salmon Impacted Across Full Life-Cycle

Lethal water temperature for most salmonids is around 69.8° F

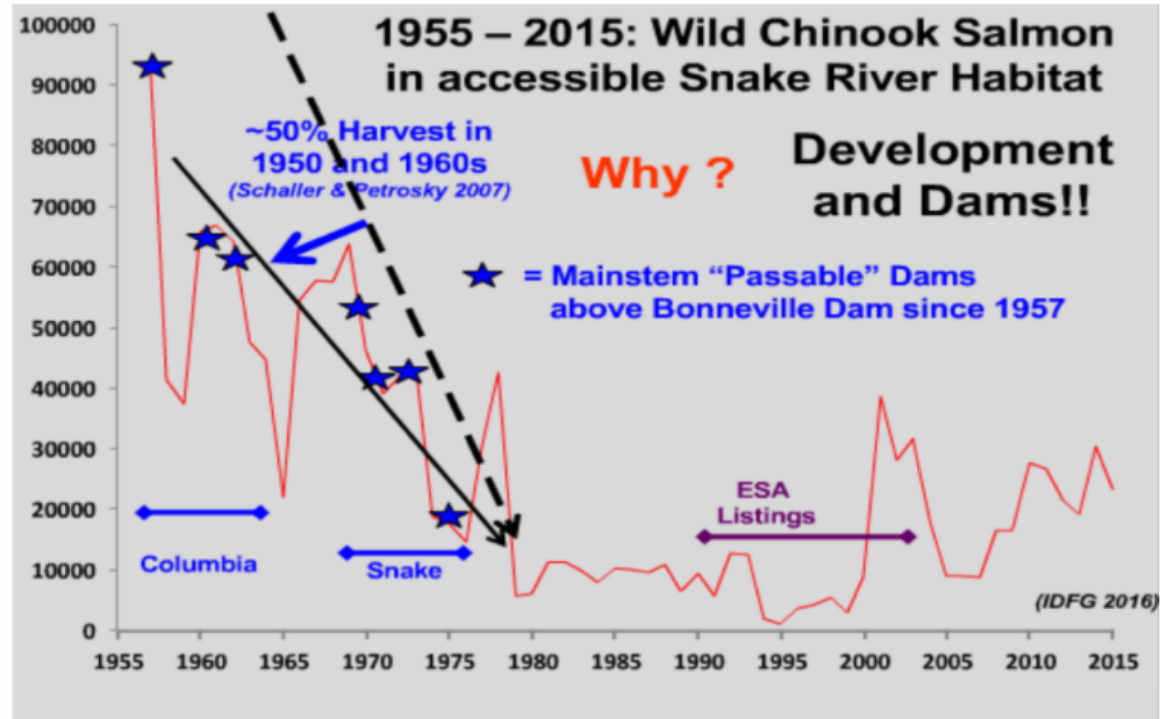




1. POPULATIONS ARE DISMAL

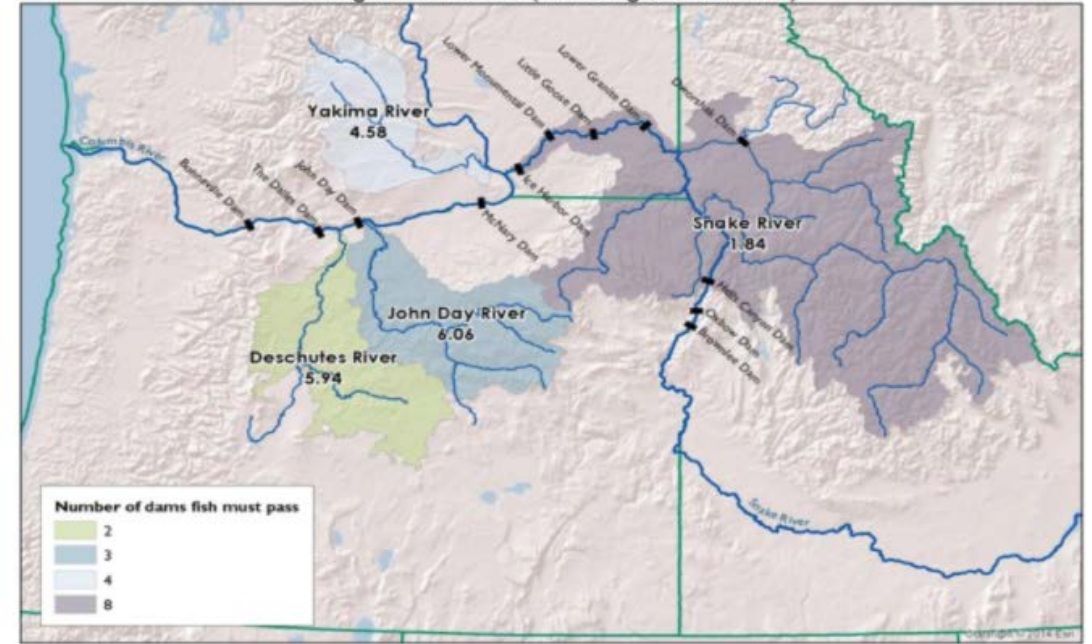
Lower Snake River salmon and steelhead are incredibly resilient. But they're also incredibly vulnerable at this moment.

In short, extinction is not a far-fetched reality. If we cannot find a way to solve the challenges we face, the science indicates we may see the extinction of this iconic species which once returned to the Snake River basin by the millions.



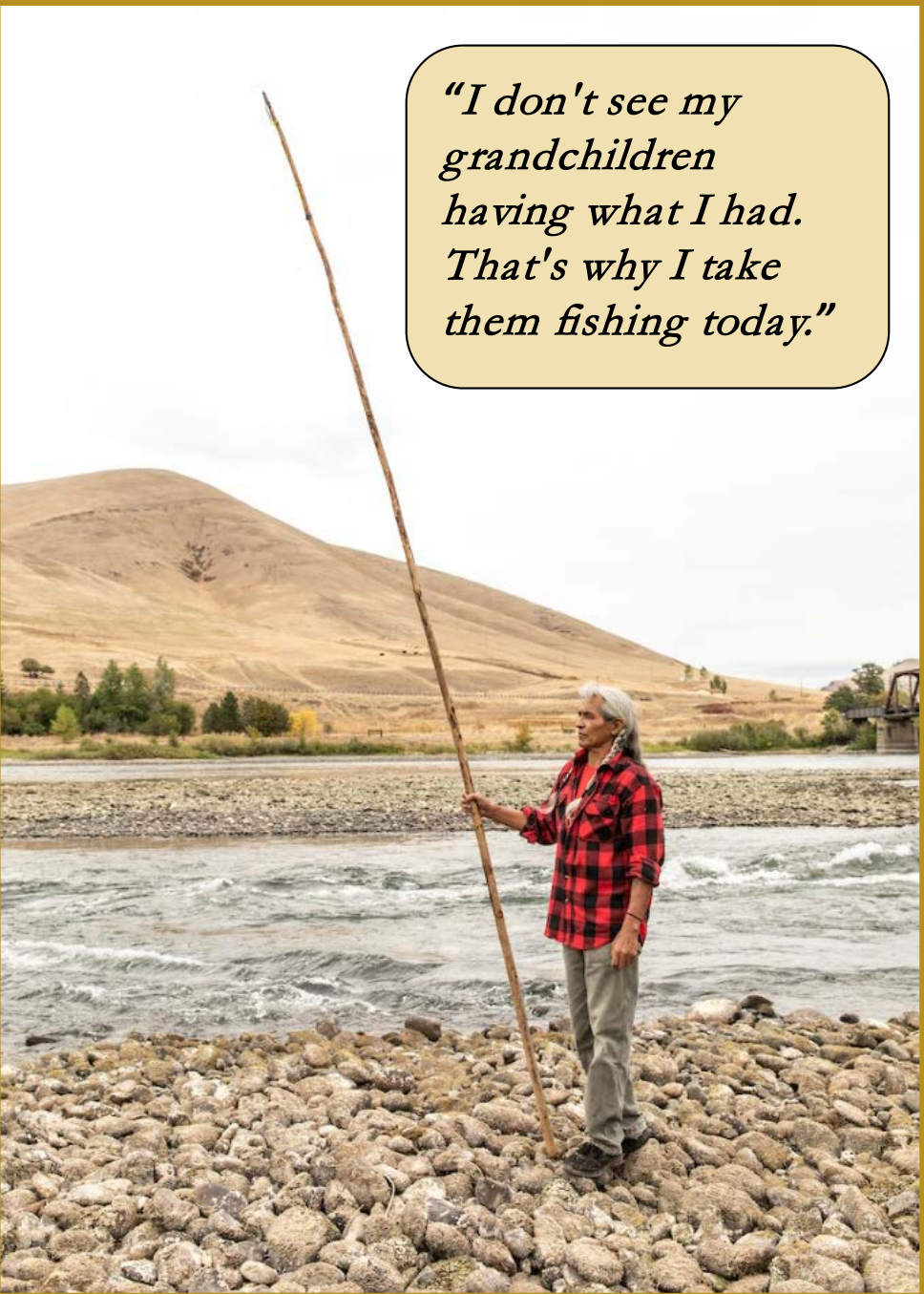
Wild Steelhead Smolt-to-Adult Ratios (2006-2015)

SAR goal of 2% to 6% (4% average; 2% minimum)



Measuring smolt to adult returns is a good way to assess the impact of dams. The more dams crossed, the lower the smolt to adult ratio and the harder it is to maintain a healthy population of fish. Source: Idaho Conservation League.

But it is not just the dams themselves. Conditions created by massive reservoirs create issues for fish. Historically, it took about two days for young fish to reach the sea. Today, it takes an average of three weeks and up to six weeks, increasing the exposure to high water temperatures and predators.



"I don't see my grandchildren having what I had. That's why I take them fishing today."

"When I was little there was fish everywhere, all kinds of fish. Now there's no fish hardly."

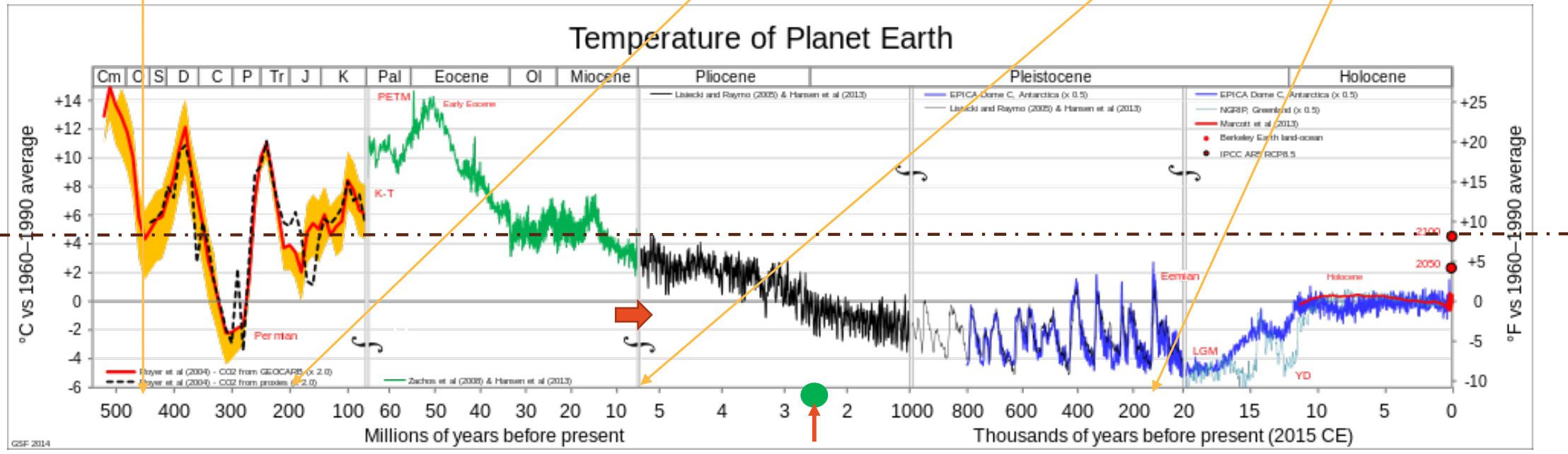
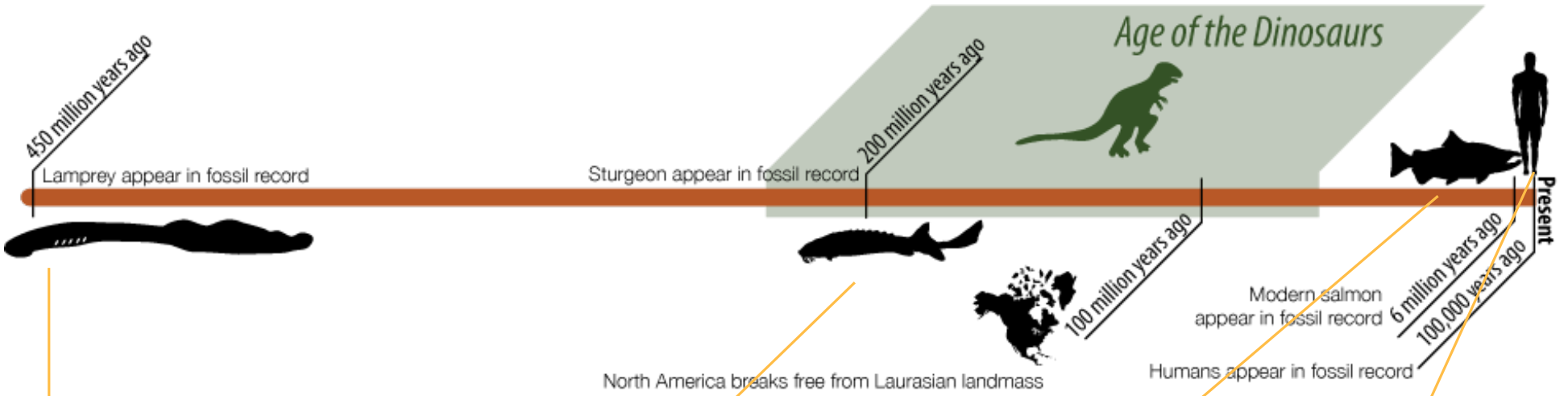
There's no water, all the streams are smaller and smaller. They're finding out the dams and the lack of salmon is even impacting the orca whales in the ocean.

Everybody's connected. The circle of life. It's really that way.

It's not only the fish, it's everything. There's more fires, there's less food. We go digging and there's less to dig. It is our medicine and our food. A lot of it's closed off or not there no more. It's been burned off or dug up or there's wheat fields where there never used to be.

I'm scared for my children from what I've seen in my lifetime. There's going to be no fishing for them or no treaty rights. There's less and less for them."

Jeff Scott, fisherman and elder of the Nez Perce Tribe



Existing Fish Vulnerability Assessments

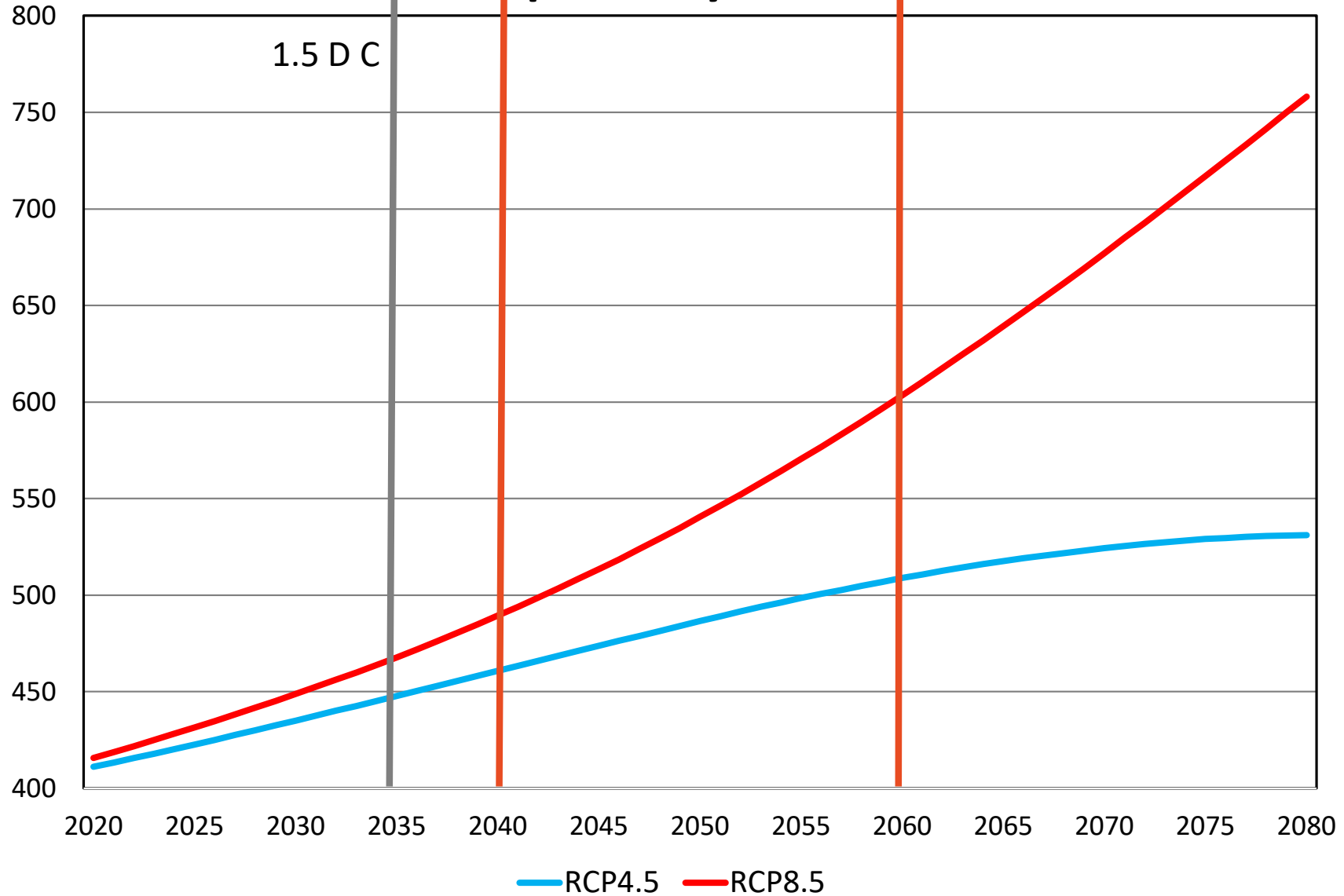
FIGURE 6-12. CLIMATE CHANGE VULNERABILITY MATRIX FOR FOCAL SPECIES OF FISH (DUNHAM, 2015) (CROZIER, ET AL., 2019) (USFWS, ET AL., 2017, SEPT 29) (ISAAC, YOUNG, NAGEL, HORAN, & GROCE, 2015).

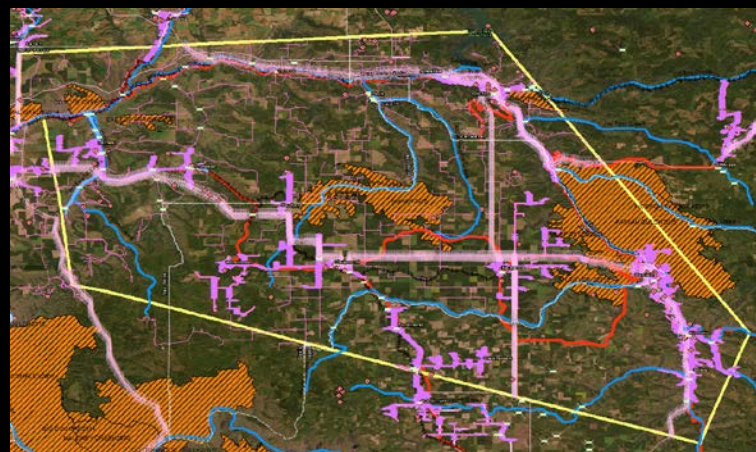
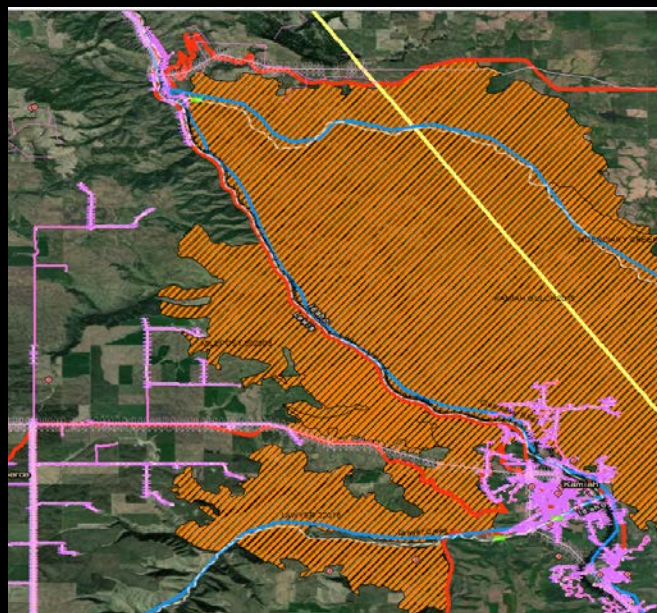
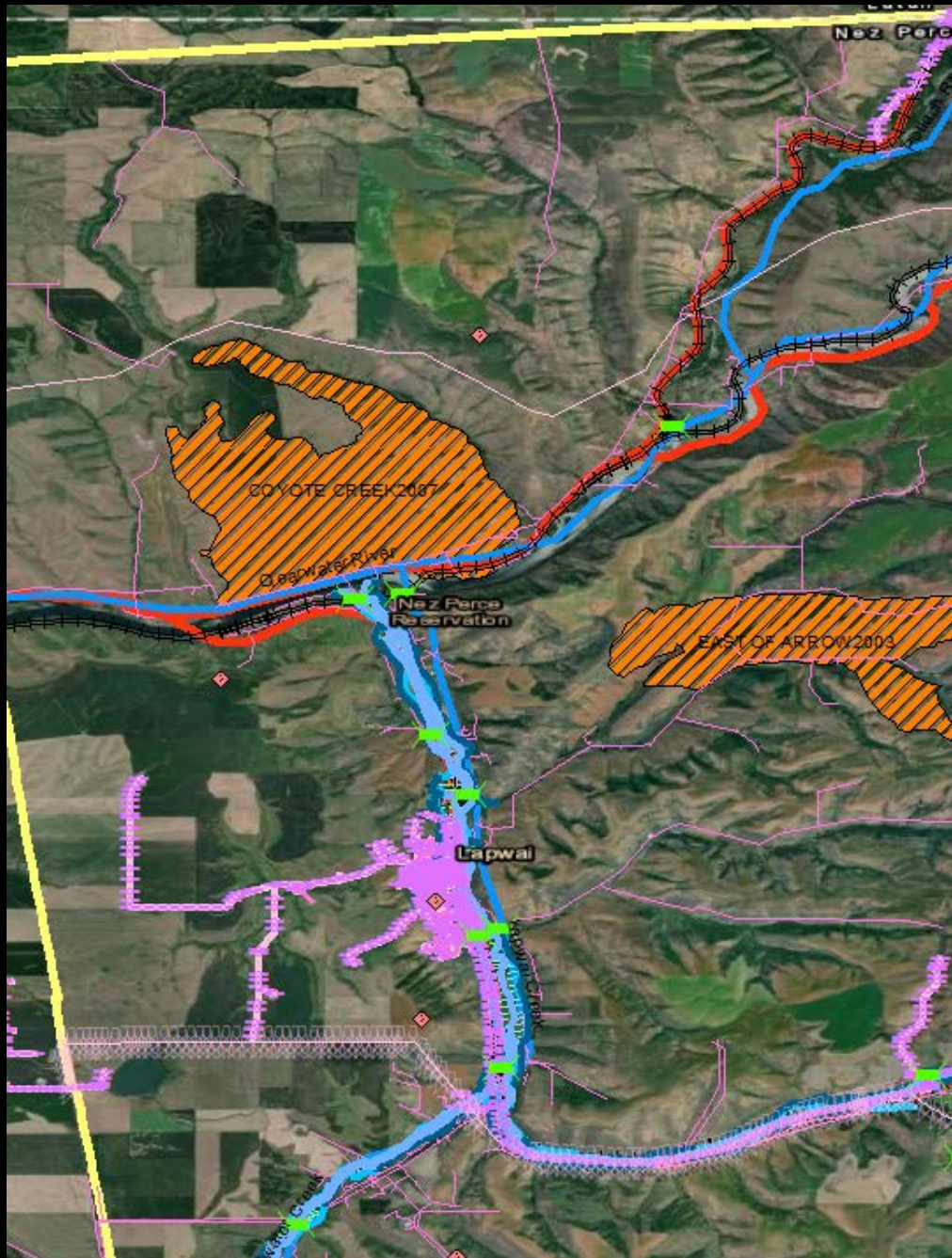


Vulnerability of Focal Species of Fish					
Sensitivity	Very High			Snake River Sockeye	Bull Trout; Lamprey: Asotin and Selway
	High			Lower Columbia River Coho; Snake River Basin Steelhead; Snake River Fall-Fun Chinook	Snake River Spring/Summer Run Chinook
	Moderate				
	Low				
		Low	Moderate	High	Very High
			Exposure		


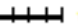



How much time do we have? And how quickly must we act?









Legend

-  vector.SDE.Bridges
-  vector.SDE.FCC_Towers_Private
-  vector.SDE.AvistaTransmissionStructures
-  vector.SDE.AvistaPoleStructures
-  vector.SDE.AvistaFacility
-  vector.SDE.FloodwayBND_LapwaiCrk
-  vector.SDE.FloodPlain_500yr_LapwaiCrk
-  vector.SDE.FloodPlain_100yr_LapwaiCrk
-  vector.SDE.FloodElevation_LapwaiCrk
-  vector.SDE.Railroads_Idaho
-  vector.SDE.AvistaUGConductor
-  vector.SDE.ClearwaterPowerConductor
-  vector.SDE.AvistaTransmissionLine
-  USA_Rivers_and_Streams
-  vector.SDE.AvistaOHConductor
-  vector.SDE.RoadSHWY_Idaho

Fire Perimeters

-  <all other values>
- Fire_Type**
-  RX
-  WF
-  WFU





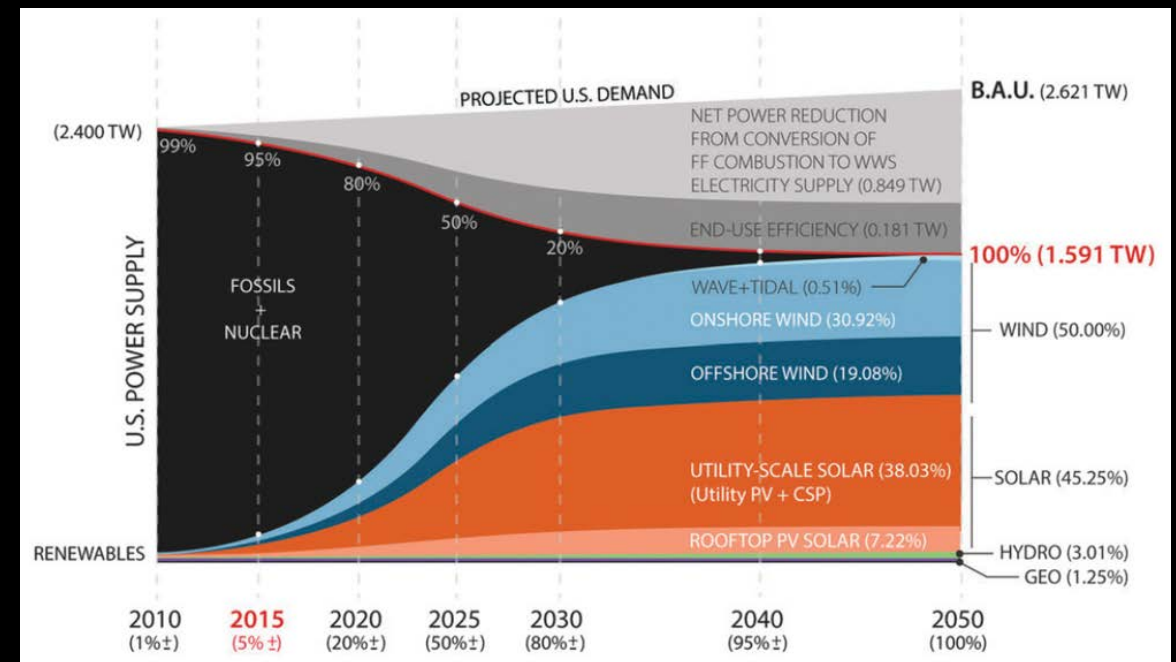
Okay, this is depressing, *can we solve this?* And what can the tribe do? what do tribal members want?



This guy and his team at Stanford University figured out how! And, it is cheaper than the alternative and would create good jobs! Really!

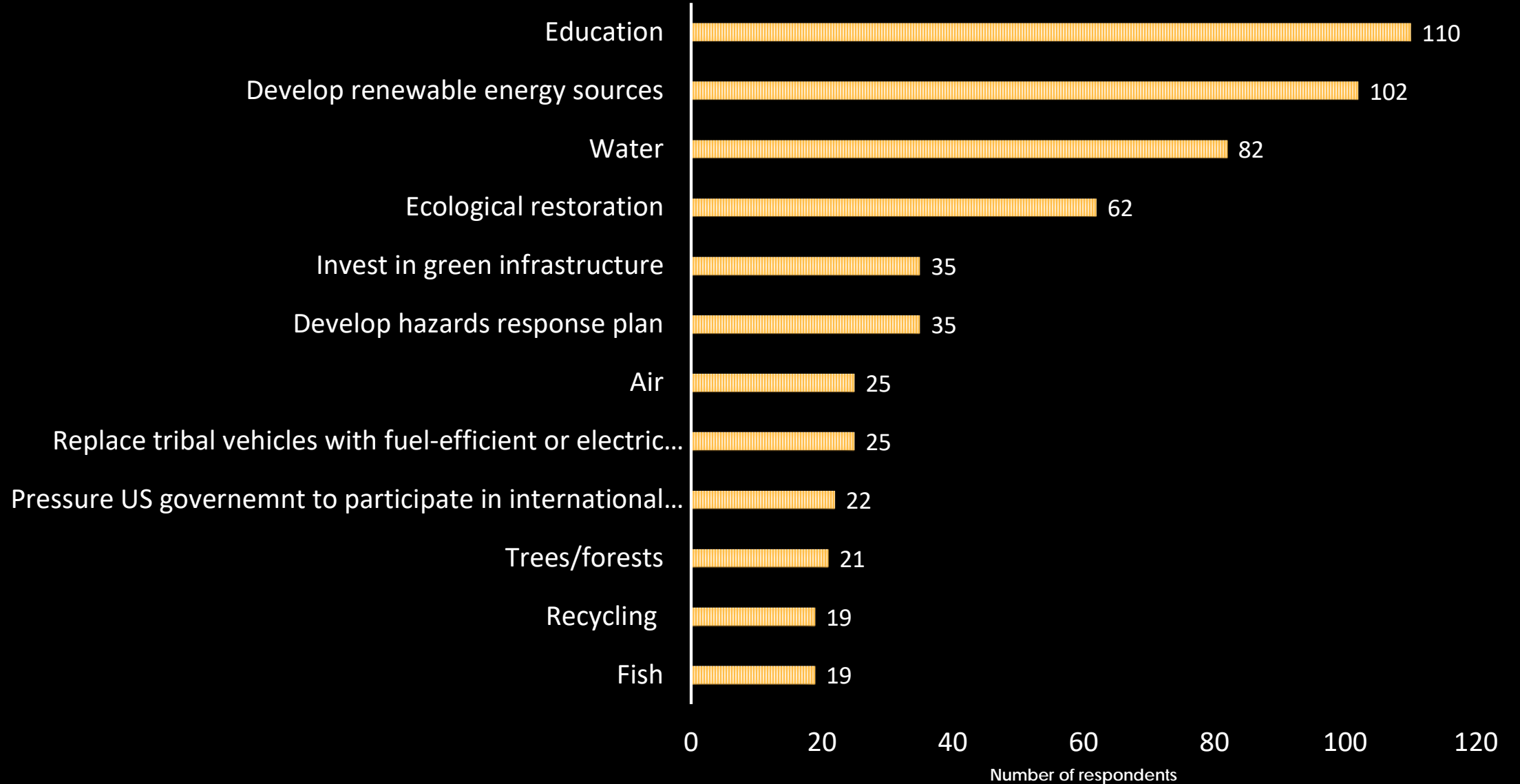
“Based on our findings, there are no technological or economic barriers to converting the entire world to clean, renewable energy sources, It is a question of whether we have the societal and political will.”

~Mark Z. Jacobson



<http://thesolutionsproject.org/>

TOP PRIORITIES FOR PLANNING FOR CLIMATE CHANGE



WHAT IS RESILIENT ENERGY?



- Wind Energy is now CHEAPER THAN COAL!
- Tesla's Electric Cars go 400 miles on a charge



Nez Perce Tribe

April 13 · 🌐



"The Nez Perce Tribe, however, is out ahead of the game. There is a fast-charging station at the Clearwater River Casino and Lodge along U.S. Highway 12, and Shelby Leighton, who works with the tribe, said there are plans in the works to put fast-charging stations at the It'se Ye-Ye Casino in Kamiah and possibly Zims Hot Springs near New Meadows, off U.S. Highway 95." 🍌



DNEWS.COM

Electric vehicles slowly becoming more accessible, practical
Once the purview of the eccentric — or the very rich — electric veh...

We don't
have to
chose
between the
environment
and the
economy.

Tribe steps into solar age

Nez Perce Tribe flips switch on 770 solar panels, the first step in its effort to fight climate change, move toward energy independence

By Eric Barker Of the Tribune Feb 4, 2021



Pete Caster/Tribune

1 of 4





<https://vimeo.com/499831141>

REVOLU (SUN)[®]
cleaner. smarter. living. LIC# ABC 30244



NEZ PERCES WARRIORS No 2
July 27 1901.
Major M. H. H. H. H.



“I have heard talk and talk, but nothing is done. Good words do not last long unless they amount to something...”

— **Chief Joseph**

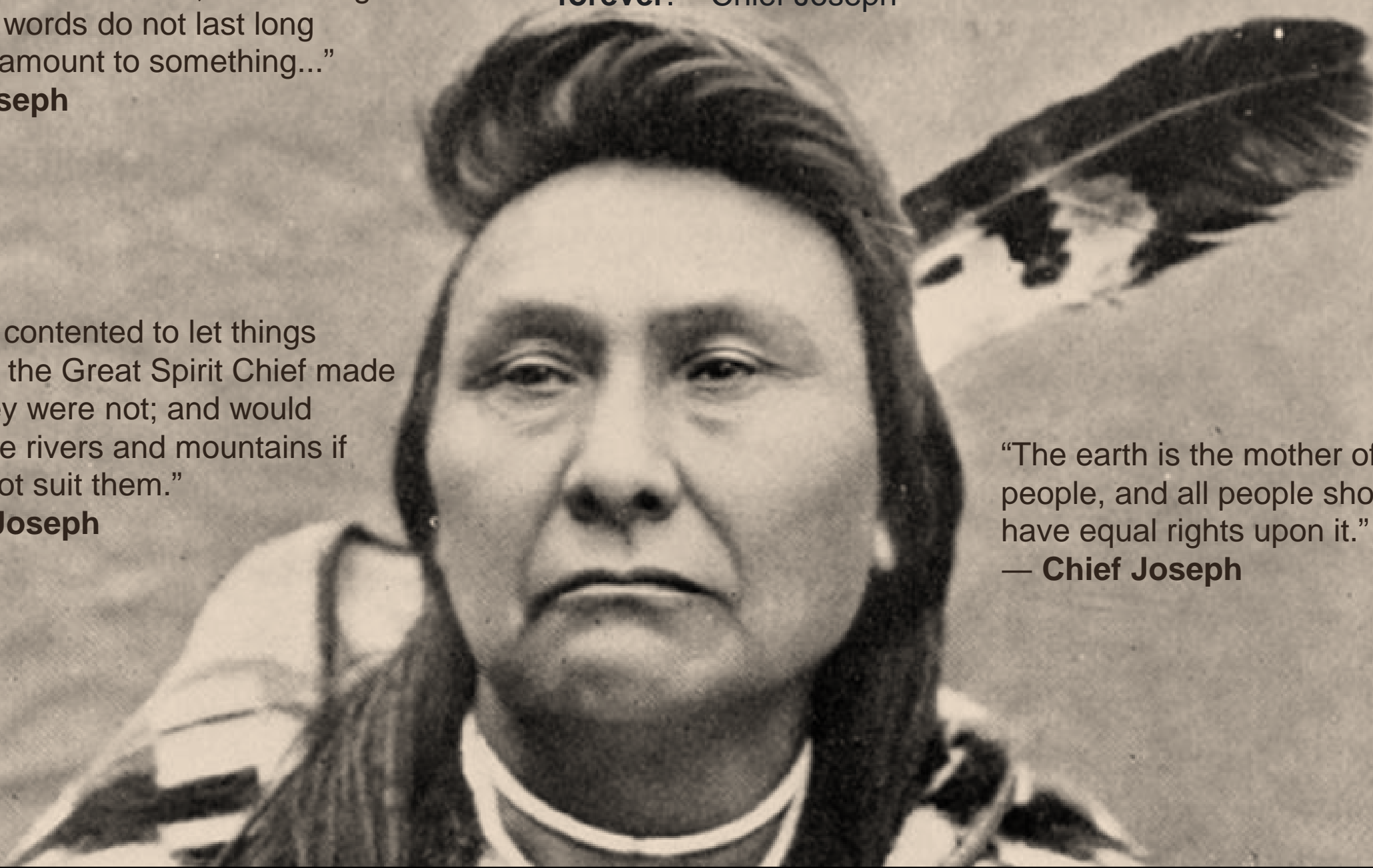
“We were contented to let things remain as the Great Spirit Chief made them. They were not; and would change the rivers and mountains if they did not suit them.”

— **Chief Joseph**

From where the sun now stands, I **will fight no more forever.** — Chief Joseph

“The earth is the mother of all people, and all people should have equal rights upon it.”

— **Chief Joseph**



Qe'ci'yew'yew'

Special thank you to RevoluSun, the Nez Perce Tribe Executive Committee, the BIA Tribal Resilience Program, our investors, Tuck Miller, the TERO program, the Climate Change Task Force, the Nimiipuu, Salmon, and the 35 solar installers who made this possible.

