

Attachment 5. Wetland Delineation Report.

Wetland Delineation Report: LanzaTech



Prepared for:

LanzaTech

Corporate Address:

8045 Lamon Ave., Suite 400
Skokie, IL 60077

Facility Address:

LanzaTech Freedom Pines Biorefinery



Prepared by:

WENCK Associates, Inc.

2042 Wooddale Drive, Suite 160
Woodbury, MN 55125
Phone: 651-395-5229
Fax: 651-228-1969

Table of Contents

1.0 INTRODUCTION	1-1
1.1 Site Description	1-1
2.0 METHODS.....	2-1
3.0 RESULTS	3-1
3.1 OFFSITE Investigation.....	3-1
3.2 Onsite Investigation.....	3-1
3.2.1 Wetlands and Streams	3-1
4.0 PROTECTED SPECIES RECONNAISSANCE	4-11
4.1 Gopher Tortoise	4-11
4.2 Eastern Indigo Snake.....	4-11
5.0 CONCLUSION	5-13

FIGURES

1. Site Location Map
2. NWI/NHD Map
3. Soils Map
4. Delineated Features

APPENDICES

- A Field Data Sheets
- B Precipitation Data

1.0 Introduction

Wenck Associates, Inc. (Wenck) staff conducted wetland delineations for LanzaTech on a site of approximately 282 acres west of Soperton, Georgia (Figure 1). Field work was conducted July 17-20 and September 3-7, 2018.

1.1 SITE DESCRIPTION

Most of the project area lies north of Commerce Drive and west of Knox Mill Road with a small southern portion also between Commerce Drive and the Seaboard Coastline railway. A portion of the northeast part of the project site connects with Georgia State Highway 78.

The lower elevations of the site are characterized by wooded wetlands associated with streams that generally run to the southwest and connect off-site to Rocky Creek (which is a tributary of Red Bluff Creek), although the stream that runs through Wetland B off-site to the east runs to the southeast because of a drainage divide east of the site. Higher elevations of the site include the LanzaTech facility itself, fallow old field areas and pine plantations. The LanzaTech plant is located approximately in the middle of the site and a road access is provided from Commerce Drive to the south.

2.0 Methods

Wetlands are defined in the Federal Register (1982) as "areas that are inundated or saturated by surface or ground water at a frequency and duration sufficient to support, and that under normal circumstances do support, a prevalence of vegetation typically adapted for life in saturated soil conditions. Wetlands generally include swamps, marshes, bogs, and similar areas."

An area must have 3 elements present in order to be delineated as a wetland:

- 1) Greater than 50% dominance of hydrophytic plant species.
- 2) A hydric soil substrate.
- 3) Wetland hydrology during the growing season.

This wetland investigation was conducted by using the on-site methodology set forth in the 1987 U.S. Army Corps of Engineers (COE) Wetlands Delineation Manual (1987 Manual) and the 2010 U.S. Army Corps of Engineers Regional Supplement to the Corps of Engineers Wetland Delineation Manual: Atlantic and Gulf Coastal Plain Region (Version 2.0) (Regional Supplement). Potential wetland areas were examined according to guidelines set forth in these documents and wetland boundaries were determined through analysis of the vegetation, soils, and hydrology.

Plant species at both wetland and upland transect points were identified and assigned a wetland indicator status according to the North American Digital Flora: National Wetland Plant List, version 2.4.0 U.S. Army Corps of Engineers, Engineer Research and Development Center, Cold Regions Research and Engineering Laboratory, Hanover, NH, and BONAP, Chapel Hill, NC. (2016). In the text of this report and on the enclosed data forms, the plant indicator status follows the plant's scientific or common name unless a status has not been assigned. According to the 1987 Manual and Regional Supplement, the hydrophytic plant criteria are met when more than 50% of the dominant species within the vegetative strata were assigned an obligate (OBL), facultative wet (FACW), or facultative (FAC) wetland status.

The presence of current wetland hydrology was determined through direct observation of the primary or secondary wetland hydrology indicators as defined in the 1987 Manual and Regional Supplement. The presence of a single primary indicator is sufficient to conclude that wetland hydrology is present. The observation of two or more secondary wetland hydrology indicators is required to conclude that wetland hydrology is present.

Hydric soils were determined through use of NRCS Field Indicators of Hydric Soils in the United States (Version 8.2). Soils were examined and classified by digging soil pits at sample point transects using a Dutch auger. If the soils exhibited indicators of hydric soils as defined by USDA Soil Conservation Service (1994) - a soil that formed under conditions of saturation, flooding or ponding long enough during the growing season to develop anaerobic conditions in the upper part - they were determined to be hydric.

Waterbodies (water features that lack all three wetland parameters) were delineated as non-wetland surface waters based on the presence of a bed/bank and a recognizable Ordinary High Water Mark (OHWM). The most common indicators of the OHWM were 1) the

point at which aquatic vegetation transitioned to upland vegetation, 2) erosion lines along the stream bank, and 3) the highest point at which vegetation had been removed due to scouring or prolonged ponding. Small unnamed streams were present within some of the wetland branches and a wet ditch that drains into Wetland E was identified and located on the south side of the site.

Data sheets were completed for each wetland investigation point and are included in Appendix A. Delineated wetland boundaries were located with sequentially-numbered surveyor pin flags and located with a handheld sub-meter GPS unit. The GPS data were then used to create the wetland boundary shapefiles in ArcMap as presented in the report figures.

3.0 Results

3.1 OFFSITE INVESTIGATION

The National Wetlands Inventory (NWI) and National Hydrologic Dataset (NHD) (Figure 2) indicate the presence of several wetlands and waterbodies generally in alignment with the field delineation. The field delineation resulted in the delineation of more area than is shown on the NWI, mainly due to the variable width of the riparian floodplain forest wetland associated with streams on the site.

The NRCS Soil Survey (Figure 3) indicates the presence of hydric soils in and around all of the delineated wetlands. Hydric mapped units include Alluvial land and Plummer sand.

Precipitation at the time of the original site visit in July was normal during the prior period, albeit on the high side of the normal range. Antecedent precipitation prior to the September site visit was at the lower end of the normal range. WETS tables for Treutlen County, GA are provided in Appendix B.

3.2 ONSITE INVESTIGATION

3.2.1 Wetlands and Streams

The boundaries or partial boundaries of five wetlands (Wetlands A – E per Figure 4) and the approximate centerlines of three unnamed streams and one wet ditch were delineated within the surveyed areas (Figure 4).

Wetland A

Wetland A is the largest wetland on the site and has branches that spread throughout much of the area south of the existing ethanol plant. The wetland is associated with an unnamed tributary of Rocky Creek. During Wenck's investigation in July and September, the creek channel had water throughout which varied in depth from a few inches to approximately one foot. The stream averages approximately four feet in width and the on-site portion measures 2,899 linear feet. Other branches of Wetland A contain irregular channels which are sometimes singular but braided in other locations. Because of their inconsistency, they were not mapped out separately. The wetland varies in width along either side of the main stream channel and the channel becomes braided in some of the broader, flatter areas of the wetland. Greenbriar (*Smilax rotundifolia*) is common throughout this forested wetland and in the forested adjacent uplands.

Data were collected in three transects along Wetland A's boundary as shown in Figure 4. Dominant wetland vegetation at Transect 1 includes black willow (*Salix nigra*, OBL), red maple (*Acer rubrum*, FAC) and sensitive fern (*Onoclea sensibilis*, FACW). Soils in the wetland exhibited a dark sandy loam surface over depleted sand and met Hydric Indicator A11. Hydrology indicators included Surface Water (A1), High Water Table (A2), Saturation (A3), Geomorphic Position (D2) and FAC-Neutral Test (D5). Dominant vegetation in the adjacent upland includes water oak (*Quercus nigra*, FAC), flatwoods plum (*Prunus umbellata*, NI), bahiagrass (*Paspalum notatum*, FACU), and swordfern (*Macrothelypteris torresiana*, FACW). Upland soils exhibited light sandy loam and loamy sands with no hydric

indicators. No indicators of wetland hydrology were present in the upland which was on a slope of approximately five percent.



Wetland A Transect 1 Looking North Into Wetland

In the second transect along Wetland A's southeast lobe, dominant vegetation in the wetland includes sweetgum (*Liquidambar styraciflua*, FAC) and swamp titi (*Cyrilla racemiflora*, FACW). Soils in the wetland exhibited a dark sandy loam surface over depleted loamy sands with redoximorphic features and met Hydric Indicator A11. Hydrology indicators included Surface Water (A1), High Water Table (A2), Saturation (A3), Geomorphic Position (D2) and FAC-Neutral Test (D5). Dominant vegetation in the adjacent upland includes sweetgum, water oak and false maiden fern (*Macrothelypteris torresiana*, FACU). Upland soils exhibited brown sandy loam over lighter loamy sands with no hydric indicators. No indicators of wetland hydrology were present in the upland which was on a slope of approximately five percent.

This riparian wetland is associated with a shallow stream channel which appears to receive water from a pond on the east side of Knox Mill Road.



Wetland A Transect 2 at Wetland Sample Point

In the third transect along Wetland A's north-central boundary, dominant vegetation in the wetland includes sweetgum, sweetbay (*Magnolia virginiana*, FACW), and a fern believed to be ebony spleenwort (*Asplenium platyneuron*, FACU). Soils in the wetland exhibited a dark sandy loam surface over depleted loamy sands with redoximorphic features and met Hydric Indicator A11. Hydrology indicators included Geomorphic Position (D2) and FAC-Neutral Test (D5). Dominant vegetation in the adjacent upland includes sweetgum, water oak and a fern believed to be blackstem spleenwort (*Asplenium resiliens*, NI). Upland soils exhibited brown sandy loam over lighter loamy sands with no hydric indicators. No indicators of wetland hydrology were present in the upland which was on a slope of approximately five percent.



Wetland A Transect 3 Near Wetland Sample Point

Wetland B

Wetland B encroaches somewhat into the northeast boundary of the parcel. The forested wetland is associated with a shallow stream that is outside the property boundaries and drains to the southeast from the site.

Data were collected in a transect along the basin's west boundary as shown in Figure 4. Dominant wetland vegetation in the wetland includes sweetgum, wood nettle (*Laportea canadensis*, FACW), and sensitive fern. Soils in the wetland exhibited a dark sand surface over depleted sand and met Hydric Indicator A11. Hydrology indicators included High Water Table (A2), Saturation (A3), Geomorphic Position (D2) and FAC-Neutral Test (D5). Dominant vegetation in the adjacent upland includes water oak, sweetgum, long-leaf pine (*Pinus palustris*, FACU), red maple, and muscadine (*Vitis rotundifolia*, FAC). Upland soils exhibited light sandy horizons throughout the profile with no hydric indicators. No indicators of wetland hydrology were present in the upland which was on a slope of approximately five percent.



Wetland B at Transect Looking Southeast Into Wetland

Wetland C

Wetland C is located in the northeastern part of the site. It is an isolated wetland and is not associated with a stream. The wetland did not have standing water on the day of observance. It is a natural depressional area that was perhaps at one time connected with Wetland B.

Data were collected in a transect along the basin's north boundary as shown in Figure 4. Dominant wetland vegetation in the wetland includes a heavy representation of red maple with only sparse amounts of a species of sedge (*Carex spp.*) in the herbaceous layer. Soils in the wetland exhibited a dark loamy surface over depleted loams with redoximorphic features which met Hydric Indicator A11. Hydrology indicators included Geomorphic Position (D2) and FAC-Neutral Test (D5). Dominant vegetation in the adjacent upland includes water oak, sweetgum, long-leaf pine, willow oak (*Quercus phellos*, FACW) and cherry-bark oak (*Quercus pagoda*, FACW) seedlings. Upland soils exhibited brown sands over lighter colored sands with no hydric indicators. No indicators of wetland hydrology were present in the upland which was on a slope of approximately five percent.



Wetland C at Transect Looking South Into Wetland

Wetland D

Wetland D is a forested wetland associated with a shallow stream in the northwestern part of the site. The stream and wetland complex continue off the site to the south and eventually connect to Rocky Creek. The stream averages approximately one foot in depth and three feet in width and becomes indiscernable at the south end of the area delineated where it becomes a broad hardwood swamp (see photo below). The on-site portion of the stream measures 2,745 linear feet.



South End of Wetland D

Data were collected in a transect near the east end of the wetland as shown in Figure 4. Dominant wetland vegetation in the wetland includes sweetgum, red maple and a species of sedge (*Carex spp.*). Soils in the wetland exhibited a dark sandy loam surface over depleted sand with redoximorphic features and met Hydric Indicator A11. Hydrology indicators included Aquatic Fauna (B13-snail shells), Drainage Patterns (B10), Geomorphic Position (D2) and FAC-Neutral Test (D5). Dominant vegetation in the adjacent upland includes cherry-bark oak, sweetgum, long-leaf pine, red maple, as well as greenbriar and muscadine vines. Upland soils exhibited dark sand over lighter colored sand with no hydric indicators. No indicators of wetland hydrology were present in the upland which was on a slope of approximately five percent.



Wetland D Looking East at Transect

Wetland E

Wetland E is located in the southwestern portion of the site south of Commerce Drive. Wetland E is connected to Wetland A via a culvert under Commerce Drive and is also associated with the unnamed stream tributary that connects with Rocky Creek off-site. The wetland includes a narrow forested finger on its southeastern portion that is associated with a small ephemeral tributary. The western portion of the wetland is an emergent marsh with surrounding forested wetland.

Data were collected in a transect along the basin's northwest boundary as shown in Figure 4. Dominant wetland vegetation in the wetland includes sweetbay, broad-leaved arrowhead (*Sagittaria latifolia*, OBL) and a species of smartweed (*Persicaria spp.*). Soils in the wetland exhibited a dark silt loam surface over depleted loam with redoximorphic features and met Hydric Indicator A11. Hydrology indicators included High Water Table (A2), Saturation (A3), Geomorphic Position (D2) and FAC-Neutral Test (D5). Dominant vegetation in the adjacent upland includes sweetgum, long-leaf pine, and false maiden fern. Upland soils exhibited light sandy horizons throughout the profile with no hydric indicators. No indicators of wetland hydrology were present in the upland which was on a slope of approximately eight percent.



Wetland E at Transect Looking Into Wetland

Detailed information on the vegetation, hydrology and soils characteristics of each wetland are included in Appendix A.

Stream 1

Stream 1 is associated with Wetland A. The east end of this stream has its origins from a pond on the east side of Knox Mill Road and flows west through the site, beneath Commerce Drive and into Wetland E. Stream 1 varies in width but is estimated to average approximately four feet in width. Water depth averaged approximately a few inches to one foot during our field work.

Stream 2

Stream 2 is associated with Wetland D on the northwest side of the property and runs to the southwest. There was standing water in the channel during our September 2019 field work but the stream had no active flow. The width of the standing water within the channel was estimated to average approximately eight feet and the depth was estimated to be between one and two feet.

Wet Ditch

A road ditch is present just south of Parkview Drive. The ditch drains to the west and is relatively wide at the west and east ends. The middle section is narrow where some long-

leaf pine is growing within the ditch but is otherwise relatively unvegetated. At the east end, there is some standing water with duckweed (*Lemna minor*) and nutsedge (*Cyperus esculentus*) present. At the west end, the ditch becomes shallowly braided and unchannelized. It terminates in a weedy sandy field near the East tip of Wetland E but there is no channel or wetland connection to Wetland E.



Wet Ditch East End Looking West

4.0 Protected Species Reconnaissance

4.1 GOPHER TORTOISE

The gopher tortoise (*Gopherus polyphemus*) is listed by the State of Georgia as Threatened and has no status federally. The Wenck wetland scientist made observations for gopher tortoise burrows while conducting wetland delineations. In all, 10 such burrows were found scattered throughout the site, mainly within or near wetland boundaries and usually on sandy slopes. None of the burrows appeared to be in active use by tortoises or other wildlife and no actual tortoises were observed. The burrows that were found were along wetland boundaries mainly because the focus of our work was to delineate wetlands. It is assumed that other burrows are present on the site although, based on observation of existing burrows, it is unlikely that any would be active. The only non-wetland area in which Wenck purposefully searched for burrows was along the west property boundary since burrows had been reported there in the past. Wenck found no burrows in this part of the site.

The locations of gopher tortoise burrows are identified in Figure 4 and a typical burrow is shown in the photo below:



Gopher tortoise burrow in North Central Portion of Wetland A

4.2 EASTERN INDIGO SNAKE

The Eastern Indigo Snake (*Drymarchon corais couperi*) is a federally Threatened species which has not been reported in the State of Georgia in recent years. The Indigo snake uses gopher tortoise burrows during colder winter months and also feeds on gopher tortoises,

among other things. Loss of long-leaf pine habitat in its historic range has reduced the number of gopher tortoises and thus the number of Eastern Indigo Snakes. The snakes are normally active around wetland edges, creek bottoms and upland areas during summer months. The LanzaTech site is at the northern edge of the snake's potential range and may contain some potentially-suitable habitat. Wenck did not observe this or any other snakes during wetland delineation activities at the site. Based on its dependence on gopher tortoise burrows, it is unlikely that Eastern Indigo Snake is present on the site.

5.0 Conclusion

Five wetlands, some with associated streams, and one wet ditch were identified in the project area. Activities which impact or potentially impact wetlands or other jurisdictional waters may be regulated by the USACE (under Section 404 of the Clean Water Act). No grading or filling in wetland basins or other jurisdictional waters should commence until all necessary permits have been obtained or a finding of no jurisdiction has been obtained from applicable regulatory agencies. This wetland delineation meets the standards and criteria described in the 1987 Manual and Regional Supplement and the results represent the conditions present at the time of the field investigation.

Sincerely,

Wenck Associates, Inc.



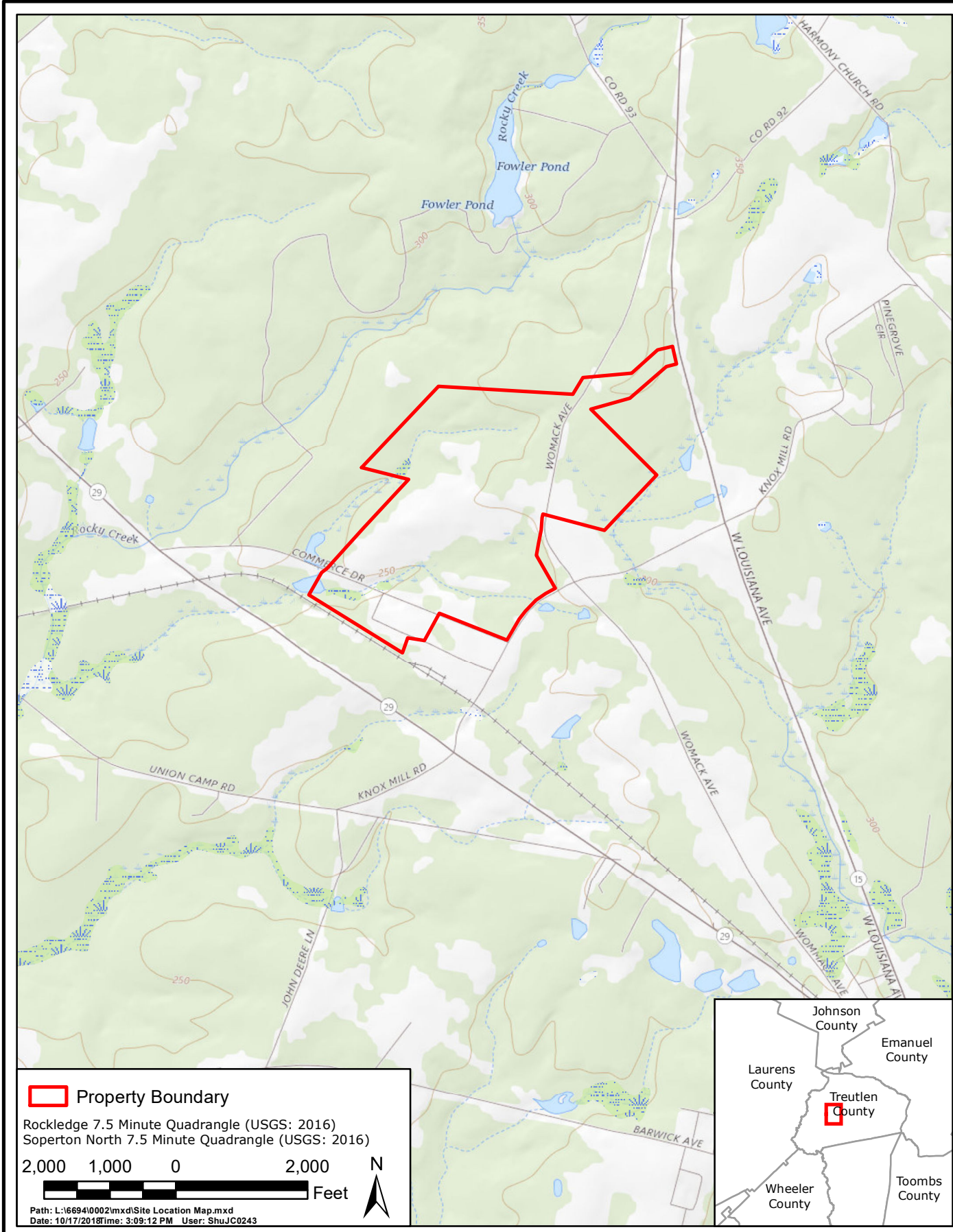
Mike Graham
Professional Wetland Scientist #365

July 17, 2020

Date

Figures

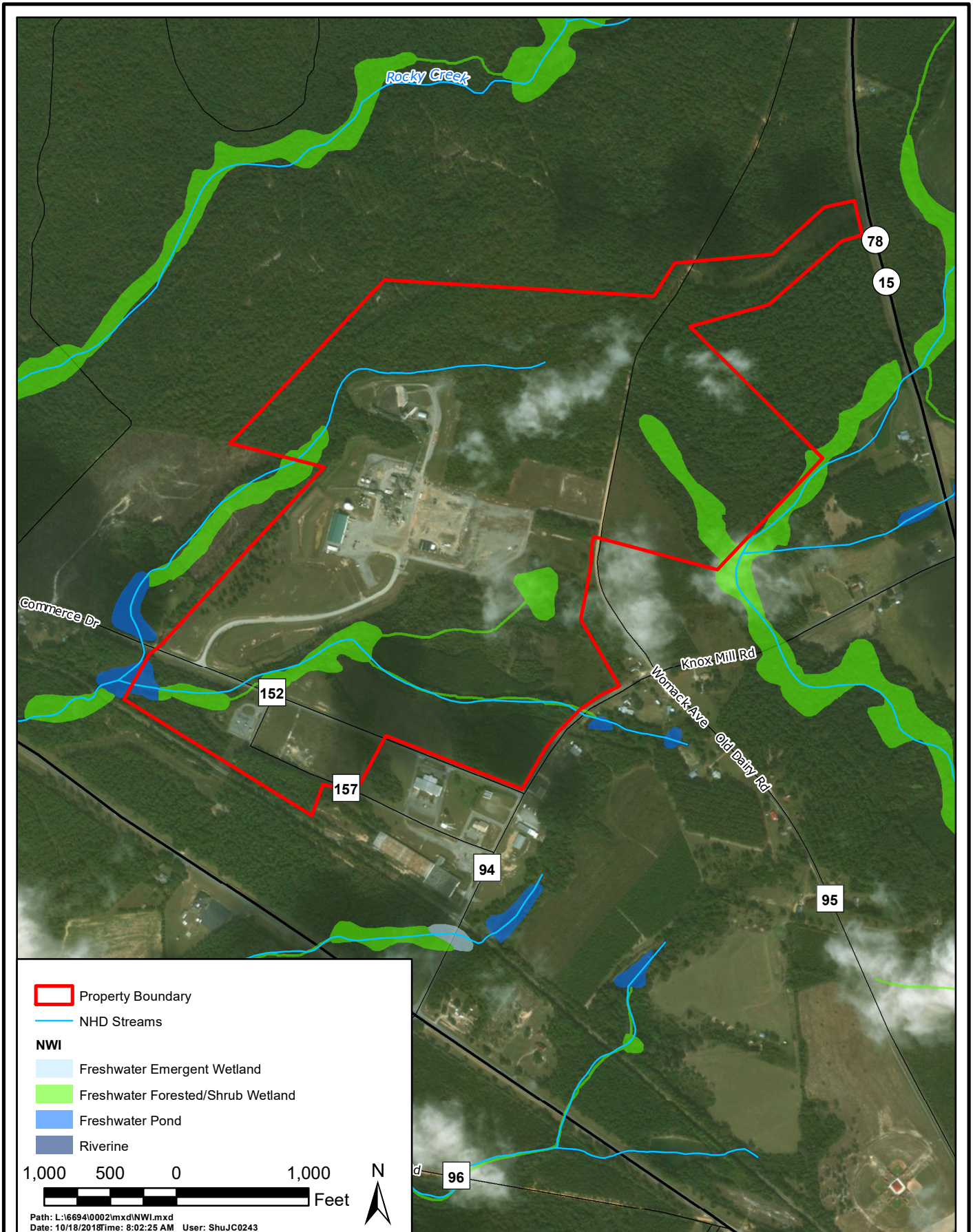
1. Site Location Map
2. NWI/NHD Map
3. SSURGO Soils Map



LANZATECH INC.
 Site Location Map



OCT 2018
 Figure 1


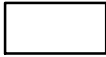


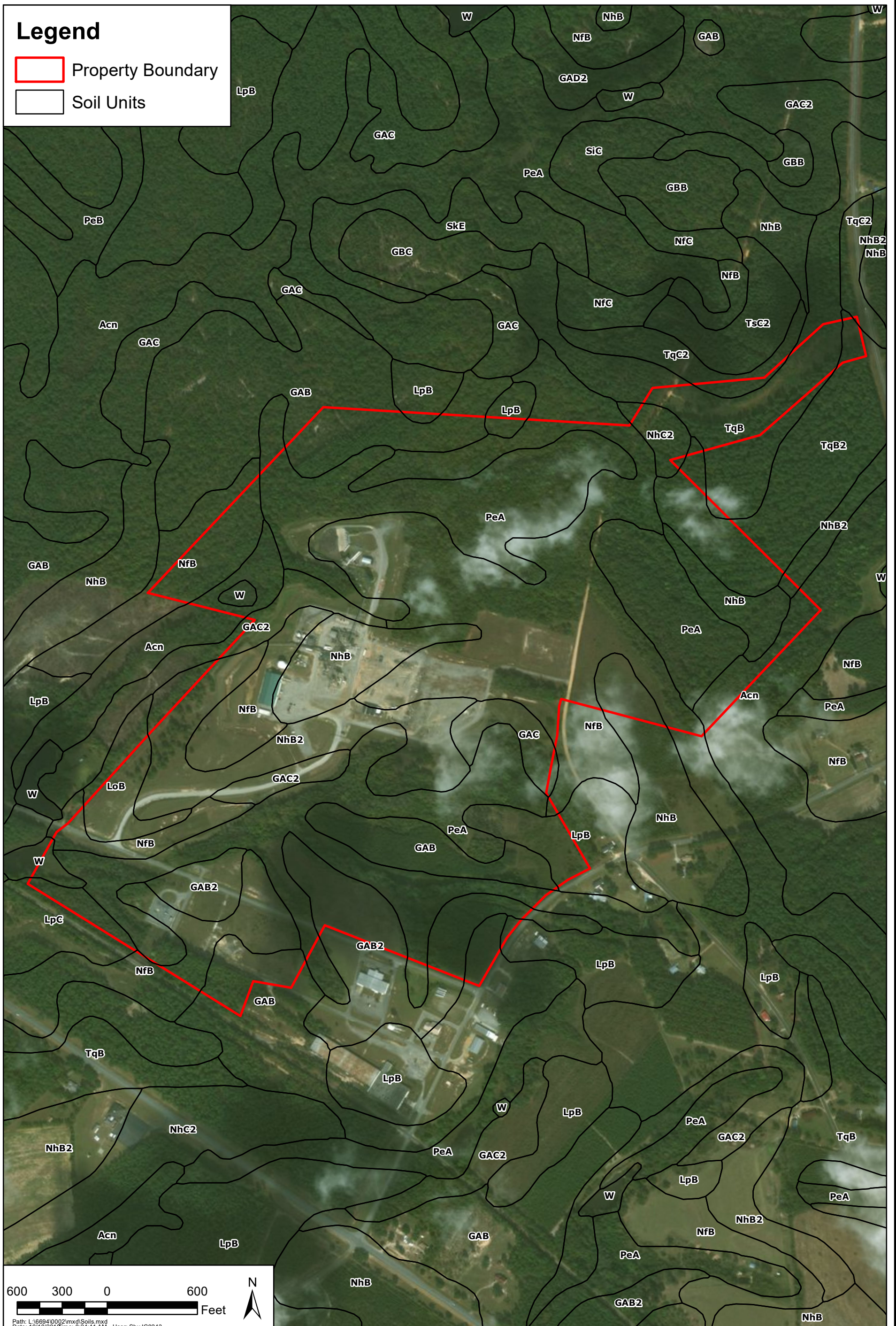
LANZATECH INC.
 National Wetlands Inventory



OCT 2018
 Figure 2

Legend

-  Property Boundary
-  Soil Units



LANZATECH INC.

SSURGO Soils Map



Responsive partner. Exceptional outcomes.

OCT 2018

Figure 3

Field Data Sheets

WETLAND DETERMINATION DATA FORM – Atlantic and Gulf Coastal Plain Region

Project/Site: _____ City/County: _____ Sampling Date: _____
 Applicant/Owner: _____ State: _____ Sampling Point: _____
 Investigator(s): _____ Section, Township, Range: _____
 Landform (hillslope, terrace, etc.): _____ Local relief (concave, convex, none): _____ Slope (%): _____
 Subregion (LRR or MLRA): _____ Lat: _____ Long: _____ Datum: _____
 Soil Map Unit Name: _____ NWI classification: _____

Are climatic / hydrologic conditions on the site typical for this time of year? Yes _____ No _____ (If no, explain in Remarks.)
 Are Vegetation _____, Soil _____, or Hydrology _____ significantly disturbed? Are "Normal Circumstances" present? Yes _____ No _____
 Are Vegetation _____, Soil _____, or Hydrology _____ naturally problematic? (If needed, explain any answers in Remarks.)

SUMMARY OF FINDINGS – Attach site map showing sampling point locations, transects, important features, etc.

Hydrophytic Vegetation Present? Yes _____ No _____ Hydric Soil Present? Yes _____ No _____ Wetland Hydrology Present? Yes _____ No _____	Is the Sampled Area within a Wetland? Yes _____ No _____
Remarks:	

HYDROLOGY

Wetland Hydrology Indicators: <u>Primary Indicators (minimum of one is required; check all that apply)</u> ___ Surface Water (A1) ___ Aquatic Fauna (B13) ___ High Water Table (A2) ___ Marl Deposits (B15) (LRR U) ___ Saturation (A3) ___ Hydrogen Sulfide Odor (C1) ___ Water Marks (B1) ___ Oxidized Rhizospheres along Living Roots (C3) ___ Sediment Deposits (B2) ___ Presence of Reduced Iron (C4) ___ Drift Deposits (B3) ___ Recent Iron Reduction in Tilled Soils (C6) ___ Algal Mat or Crust (B4) ___ Thin Muck Surface (C7) ___ Iron Deposits (B5) ___ Other (Explain in Remarks) ___ Inundation Visible on Aerial Imagery (B7) ___ Water-Stained Leaves (B9)	<u>Secondary Indicators (minimum of two required)</u> ___ Surface Soil Cracks (B6) ___ Sparsely Vegetated Concave Surface (B8) ___ Drainage Patterns (B10) ___ Moss Trim Lines (B16) ___ Dry-Season Water Table (C2) ___ Crayfish Burrows (C8) ___ Saturation Visible on Aerial Imagery (C9) ___ Geomorphic Position (D2) ___ Shallow Aquitard (D3) ___ FAC-Neutral Test (D5) ___ Sphagnum moss (D8) (LRR T, U)
Field Observations: Surface Water Present? Yes _____ No _____ Depth (inches): _____ Water Table Present? Yes _____ No _____ Depth (inches): _____ Saturation Present? Yes _____ No _____ Depth (inches): _____ (includes capillary fringe)	Wetland Hydrology Present? Yes _____ No _____
Describe Recorded Data (stream gauge, monitoring well, aerial photos, previous inspections), if available:	
Remarks:	

VEGETATION (Four Strata) – Use scientific names of plants.

Sampling Point: _____

	Absolute % Cover	Dominant Species?	Indicator Status	
Tree Stratum (Plot size: _____)				
1. _____	_____	_____	_____	
2. _____	_____	_____	_____	
3. _____	_____	_____	_____	
4. _____	_____	_____	_____	
5. _____	_____	_____	_____	
6. _____	_____	_____	_____	
7. _____	_____	_____	_____	
8. _____	_____	_____	_____	
_____ = Total Cover				
50% of total cover: _____				20% of total cover: _____
Sapling/Shrub Stratum (Plot size: _____)				
1. _____	_____	_____	_____	
2. _____	_____	_____	_____	
3. _____	_____	_____	_____	
4. _____	_____	_____	_____	
5. _____	_____	_____	_____	
6. _____	_____	_____	_____	
7. _____	_____	_____	_____	
8. _____	_____	_____	_____	
_____ = Total Cover				
50% of total cover: _____				20% of total cover: _____
Herb Stratum (Plot size: _____)				
1. _____	_____	_____	_____	
2. _____	_____	_____	_____	
3. _____	_____	_____	_____	
4. _____	_____	_____	_____	
5. _____	_____	_____	_____	
6. _____	_____	_____	_____	
7. _____	_____	_____	_____	
8. _____	_____	_____	_____	
9. _____	_____	_____	_____	
10. _____	_____	_____	_____	
11. _____	_____	_____	_____	
12. _____	_____	_____	_____	
_____ = Total Cover				
50% of total cover: _____				20% of total cover: _____
Woody Vine Stratum (Plot size: _____)				
1. _____	_____	_____	_____	
2. _____	_____	_____	_____	
3. _____	_____	_____	_____	
4. _____	_____	_____	_____	
5. _____	_____	_____	_____	
_____ = Total Cover				
50% of total cover: _____				20% of total cover: _____
<p>Dominance Test worksheet:</p> <p>Number of Dominant Species That Are OBL, FACW, or FAC: _____ (A)</p> <p>Total Number of Dominant Species Across All Strata: _____ (B)</p> <p>Percent of Dominant Species That Are OBL, FACW, or FAC: _____ (A/B)</p> <hr/> <p>Prevalence Index worksheet:</p> <p>Total % Cover of: _____ Multiply by: _____</p> <p>OBL species _____ x 1 = _____</p> <p>FACW species _____ x 2 = _____</p> <p>FAC species _____ x 3 = _____</p> <p>FACU species _____ x 4 = _____</p> <p>UPL species _____ x 5 = _____</p> <p>Column Totals: _____ (A) _____ (B)</p> <p>Prevalence Index = B/A = _____</p> <hr/> <p>Hydrophytic Vegetation Indicators:</p> <p>___ 1 - Rapid Test for Hydrophytic Vegetation</p> <p>___ 2 - Dominance Test is >50%</p> <p>___ 3 - Prevalence Index is ≤3.0¹</p> <p>___ Problematic Hydrophytic Vegetation¹ (Explain)</p> <p>¹Indicators of hydric soil and wetland hydrology must be present, unless disturbed or problematic.</p> <hr/> <p>Definitions of Four Vegetation Strata:</p> <p>Tree – Woody plants, excluding vines, 3 in. (7.6 cm) or more in diameter at breast height (DBH), regardless of height.</p> <p>Sapling/Shrub – Woody plants, excluding vines, less than 3 in. DBH and greater than 3.28 ft (1 m) tall.</p> <p>Herb – All herbaceous (non-woody) plants, regardless of size, and woody plants less than 3.28 ft tall.</p> <p>Woody vine – All woody vines greater than 3.28 ft in height.</p> <hr/> <p>Hydrophytic Vegetation Present? Yes _____ No _____</p>				
Remarks: (If observed, list morphological adaptations below).				

SOIL

Sampling Point: _____

Profile Description: (Describe to the depth needed to document the indicator or confirm the absence of indicators.)

Depth (inches)	Matrix		Redox Features				Texture	Remarks
	Color (moist)	%	Color (moist)	%	Type ¹	Loc ²		

¹Type: C=Concentration, D=Depletion, RM=Reduced Matrix, MS=Masked Sand Grains.

²Location: PL=Pore Lining, M=Matrix.

Hydric Soil Indicators: (Applicable to all LRRs, unless otherwise noted.)

- Histosol (A1)
- Histic Epipedon (A2)
- Black Histic (A3)
- Hydrogen Sulfide (A4)
- Stratified Layers (A5)
- Organic Bodies (A6) **(LRR P, T, U)**
- 5 cm Mucky Mineral (A7) **(LRR P, T, U)**
- Muck Presence (A8) **(LRR U)**
- 1 cm Muck (A9) **(LRR P, T)**
- Depleted Below Dark Surface (A11)
- Thick Dark Surface (A12)
- Coast Prairie Redox (A16) **(MLRA 150A)**
- Sandy Mucky Mineral (S1) **(LRR O, S)**
- Sandy Gleyed Matrix (S4)
- Sandy Redox (S5)
- Stripped Matrix (S6)
- Dark Surface (S7) **(LRR P, S, T, U)**

- Polyvalue Below Surface (S8) **(LRR S, T, U)**
- Thin Dark Surface (S9) **(LRR S, T, U)**
- Loamy Mucky Mineral (F1) **(LRR O)**
- Loamy Gleyed Matrix (F2)
- Depleted Matrix (F3)
- Redox Dark Surface (F6)
- Depleted Dark Surface (F7)
- Redox Depressions (F8)
- Marl (F10) **(LRR U)**
- Depleted Ochric (F11) **(MLRA 151)**
- Iron-Manganese Masses (F12) **(LRR O, P, T)**
- Umbric Surface (F13) **(LRR P, T, U)**
- Delta Ochric (F17) **(MLRA 151)**
- Reduced Vertic (F18) **(MLRA 150A, 150B)**
- Piedmont Floodplain Soils (F19) **(MLRA 149A)**
- Anomalous Bright Loamy Soils (F20) **(MLRA 149A, 153C, 153D)**

Indicators for Problematic Hydric Soils³:

- 1 cm Muck (A9) **(LRR O)**
- 2 cm Muck (A10) **(LRR S)**
- Reduced Vertic (F18) **(outside MLRA 150A,B)**
- Piedmont Floodplain Soils (F19) **(LRR P, S, T)**
- Anomalous Bright Loamy Soils (F20) **(MLRA 153B)**
- Red Parent Material (TF2)
- Very Shallow Dark Surface (TF12)
- Other (Explain in Remarks)

³Indicators of hydrophytic vegetation and wetland hydrology must be present, unless disturbed or problematic.

Restrictive Layer (if observed):

Type: _____

Depth (inches): _____

Hydric Soil Present? Yes _____ No _____

Remarks:

WETLAND DETERMINATION DATA FORM – Atlantic and Gulf Coastal Plain Region

Project/Site: _____ City/County: _____ Sampling Date: _____
 Applicant/Owner: _____ State: _____ Sampling Point: _____
 Investigator(s): _____ Section, Township, Range: _____
 Landform (hillslope, terrace, etc.): _____ Local relief (concave, convex, none): _____ Slope (%): _____
 Subregion (LRR or MLRA): _____ Lat: _____ Long: _____ Datum: _____
 Soil Map Unit Name: _____ NWI classification: _____

Are climatic / hydrologic conditions on the site typical for this time of year? Yes _____ No _____ (If no, explain in Remarks.)
 Are Vegetation _____, Soil _____, or Hydrology _____ significantly disturbed? Are "Normal Circumstances" present? Yes _____ No _____
 Are Vegetation _____, Soil _____, or Hydrology _____ naturally problematic? (If needed, explain any answers in Remarks.)

SUMMARY OF FINDINGS – Attach site map showing sampling point locations, transects, important features, etc.

Hydrophytic Vegetation Present? Yes _____ No _____ Hydric Soil Present? Yes _____ No _____ Wetland Hydrology Present? Yes _____ No _____	Is the Sampled Area within a Wetland? Yes _____ No _____
Remarks:	

HYDROLOGY

Wetland Hydrology Indicators: <u>Primary Indicators (minimum of one is required; check all that apply)</u> ___ Surface Water (A1) ___ Aquatic Fauna (B13) ___ High Water Table (A2) ___ Marl Deposits (B15) (LRR U) ___ Saturation (A3) ___ Hydrogen Sulfide Odor (C1) ___ Water Marks (B1) ___ Oxidized Rhizospheres along Living Roots (C3) ___ Sediment Deposits (B2) ___ Presence of Reduced Iron (C4) ___ Drift Deposits (B3) ___ Recent Iron Reduction in Tilled Soils (C6) ___ Algal Mat or Crust (B4) ___ Thin Muck Surface (C7) ___ Iron Deposits (B5) ___ Other (Explain in Remarks) ___ Inundation Visible on Aerial Imagery (B7) ___ Water-Stained Leaves (B9)	<u>Secondary Indicators (minimum of two required)</u> ___ Surface Soil Cracks (B6) ___ Sparsely Vegetated Concave Surface (B8) ___ Drainage Patterns (B10) ___ Moss Trim Lines (B16) ___ Dry-Season Water Table (C2) ___ Crayfish Burrows (C8) ___ Saturation Visible on Aerial Imagery (C9) ___ Geomorphic Position (D2) ___ Shallow Aquitard (D3) ___ FAC-Neutral Test (D5) ___ Sphagnum moss (D8) (LRR T, U)
Field Observations: Surface Water Present? Yes _____ No _____ Depth (inches): _____ Water Table Present? Yes _____ No _____ Depth (inches): _____ Saturation Present? Yes _____ No _____ Depth (inches): _____ (includes capillary fringe)	Wetland Hydrology Present? Yes _____ No _____
Describe Recorded Data (stream gauge, monitoring well, aerial photos, previous inspections), if available:	
Remarks:	

VEGETATION (Four Strata) – Use scientific names of plants.

Sampling Point: _____

	Absolute % Cover	Dominant Species?	Indicator Status	
Tree Stratum (Plot size: _____)				
1. _____	_____	_____	_____	
2. _____	_____	_____	_____	
3. _____	_____	_____	_____	
4. _____	_____	_____	_____	
5. _____	_____	_____	_____	
6. _____	_____	_____	_____	
7. _____	_____	_____	_____	
8. _____	_____	_____	_____	
_____ = Total Cover				
50% of total cover: _____ 20% of total cover: _____				
Sapling/Shrub Stratum (Plot size: _____)				
1. _____	_____	_____	_____	
2. _____	_____	_____	_____	
3. _____	_____	_____	_____	
4. _____	_____	_____	_____	
5. _____	_____	_____	_____	
6. _____	_____	_____	_____	
7. _____	_____	_____	_____	
8. _____	_____	_____	_____	
_____ = Total Cover				
50% of total cover: _____ 20% of total cover: _____				
Herb Stratum (Plot size: _____)				
1. _____	_____	_____	_____	
2. _____	_____	_____	_____	
3. _____	_____	_____	_____	
4. _____	_____	_____	_____	
5. _____	_____	_____	_____	
6. _____	_____	_____	_____	
7. _____	_____	_____	_____	
8. _____	_____	_____	_____	
9. _____	_____	_____	_____	
10. _____	_____	_____	_____	
11. _____	_____	_____	_____	
12. _____	_____	_____	_____	
_____ = Total Cover				
50% of total cover: _____ 20% of total cover: _____				
Woody Vine Stratum (Plot size: _____)				
1. _____	_____	_____	_____	
2. _____	_____	_____	_____	
3. _____	_____	_____	_____	
4. _____	_____	_____	_____	
5. _____	_____	_____	_____	
_____ = Total Cover				
50% of total cover: _____ 20% of total cover: _____				
Dominance Test worksheet:				
Number of Dominant Species That Are OBL, FACW, or FAC: _____ (A)				
Total Number of Dominant Species Across All Strata: _____ (B)				
Percent of Dominant Species That Are OBL, FACW, or FAC: _____ (A/B)				
Prevalence Index worksheet:				
Total % Cover of:		Multiply by:		
OBL species	_____	x 1 =	_____	
FACW species	_____	x 2 =	_____	
FAC species	_____	x 3 =	_____	
FACU species	_____	x 4 =	_____	
UPL species	_____	x 5 =	_____	
Column Totals:	_____ (A)	_____ (B)		
Prevalence Index = B/A = _____				
Hydrophytic Vegetation Indicators:				
___ 1 - Rapid Test for Hydrophytic Vegetation				
___ 2 - Dominance Test is >50%				
___ 3 - Prevalence Index is ≤3.0 ¹				
___ Problematic Hydrophytic Vegetation ¹ (Explain)				
¹ Indicators of hydric soil and wetland hydrology must be present, unless disturbed or problematic.				
Definitions of Four Vegetation Strata:				
Tree – Woody plants, excluding vines, 3 in. (7.6 cm) or more in diameter at breast height (DBH), regardless of height.				
Sapling/Shrub – Woody plants, excluding vines, less than 3 in. DBH and greater than 3.28 ft (1 m) tall.				
Herb – All herbaceous (non-woody) plants, regardless of size, and woody plants less than 3.28 ft tall.				
Woody vine – All woody vines greater than 3.28 ft in height.				
Hydrophytic Vegetation Present? Yes _____ No _____				
Remarks: (If observed, list morphological adaptations below).				

SOIL

Sampling Point: _____

Profile Description: (Describe to the depth needed to document the indicator or confirm the absence of indicators.)

Depth (inches)	Matrix		Redox Features				Texture	Remarks
	Color (moist)	%	Color (moist)	%	Type ¹	Loc ²		

¹Type: C=Concentration, D=Depletion, RM=Reduced Matrix, MS=Masked Sand Grains.

²Location: PL=Pore Lining, M=Matrix.

Hydric Soil Indicators: (Applicable to all LRRs, unless otherwise noted.)

- Histosol (A1)
- Histic Epipedon (A2)
- Black Histic (A3)
- Hydrogen Sulfide (A4)
- Stratified Layers (A5)
- Organic Bodies (A6) **(LRR P, T, U)**
- 5 cm Mucky Mineral (A7) **(LRR P, T, U)**
- Muck Presence (A8) **(LRR U)**
- 1 cm Muck (A9) **(LRR P, T)**
- Depleted Below Dark Surface (A11)
- Thick Dark Surface (A12)
- Coast Prairie Redox (A16) **(MLRA 150A)**
- Sandy Mucky Mineral (S1) **(LRR O, S)**
- Sandy Gleyed Matrix (S4)
- Sandy Redox (S5)
- Stripped Matrix (S6)
- Dark Surface (S7) **(LRR P, S, T, U)**

- Polyvalue Below Surface (S8) **(LRR S, T, U)**
- Thin Dark Surface (S9) **(LRR S, T, U)**
- Loamy Mucky Mineral (F1) **(LRR O)**
- Loamy Gleyed Matrix (F2)
- Depleted Matrix (F3)
- Redox Dark Surface (F6)
- Depleted Dark Surface (F7)
- Redox Depressions (F8)
- Marl (F10) **(LRR U)**
- Depleted Ochric (F11) **(MLRA 151)**
- Iron-Manganese Masses (F12) **(LRR O, P, T)**
- Umbric Surface (F13) **(LRR P, T, U)**
- Delta Ochric (F17) **(MLRA 151)**
- Reduced Vertic (F18) **(MLRA 150A, 150B)**
- Piedmont Floodplain Soils (F19) **(MLRA 149A)**
- Anomalous Bright Loamy Soils (F20) **(MLRA 149A, 153C, 153D)**

Indicators for Problematic Hydric Soils³:

- 1 cm Muck (A9) **(LRR O)**
- 2 cm Muck (A10) **(LRR S)**
- Reduced Vertic (F18) **(outside MLRA 150A,B)**
- Piedmont Floodplain Soils (F19) **(LRR P, S, T)**
- Anomalous Bright Loamy Soils (F20) **(MLRA 153B)**
- Red Parent Material (TF2)
- Very Shallow Dark Surface (TF12)
- Other (Explain in Remarks)

³Indicators of hydrophytic vegetation and wetland hydrology must be present, unless disturbed or problematic.

Restrictive Layer (if observed):

Type: _____

Depth (inches): _____

Hydric Soil Present? Yes _____ No _____

Remarks:

WETLAND DETERMINATION DATA FORM – Atlantic and Gulf Coastal Plain Region

Project/Site: _____ City/County: _____ Sampling Date: _____
 Applicant/Owner: _____ State: _____ Sampling Point: _____
 Investigator(s): _____ Section, Township, Range: _____
 Landform (hillslope, terrace, etc.): _____ Local relief (concave, convex, none): _____ Slope (%): _____
 Subregion (LRR or MLRA): _____ Lat: _____ Long: _____ Datum: _____
 Soil Map Unit Name: _____ NWI classification: _____

Are climatic / hydrologic conditions on the site typical for this time of year? Yes _____ No _____ (If no, explain in Remarks.)
 Are Vegetation _____, Soil _____, or Hydrology _____ significantly disturbed? Are "Normal Circumstances" present? Yes _____ No _____
 Are Vegetation _____, Soil _____, or Hydrology _____ naturally problematic? (If needed, explain any answers in Remarks.)

SUMMARY OF FINDINGS – Attach site map showing sampling point locations, transects, important features, etc.

Hydrophytic Vegetation Present? Yes _____ No _____ Hydric Soil Present? Yes _____ No _____ Wetland Hydrology Present? Yes _____ No _____	Is the Sampled Area within a Wetland? Yes _____ No _____
Remarks:	

HYDROLOGY

Wetland Hydrology Indicators: <u>Primary Indicators (minimum of one is required; check all that apply)</u> ___ Surface Water (A1) ___ Aquatic Fauna (B13) ___ High Water Table (A2) ___ Marl Deposits (B15) (LRR U) ___ Saturation (A3) ___ Hydrogen Sulfide Odor (C1) ___ Water Marks (B1) ___ Oxidized Rhizospheres along Living Roots (C3) ___ Sediment Deposits (B2) ___ Presence of Reduced Iron (C4) ___ Drift Deposits (B3) ___ Recent Iron Reduction in Tilled Soils (C6) ___ Algal Mat or Crust (B4) ___ Thin Muck Surface (C7) ___ Iron Deposits (B5) ___ Other (Explain in Remarks) ___ Inundation Visible on Aerial Imagery (B7) ___ Water-Stained Leaves (B9)	<u>Secondary Indicators (minimum of two required)</u> ___ Surface Soil Cracks (B6) ___ Sparsely Vegetated Concave Surface (B8) ___ Drainage Patterns (B10) ___ Moss Trim Lines (B16) ___ Dry-Season Water Table (C2) ___ Crayfish Burrows (C8) ___ Saturation Visible on Aerial Imagery (C9) ___ Geomorphic Position (D2) ___ Shallow Aquitard (D3) ___ FAC-Neutral Test (D5) ___ Sphagnum moss (D8) (LRR T, U)
Field Observations: Surface Water Present? Yes _____ No _____ Depth (inches): _____ Water Table Present? Yes _____ No _____ Depth (inches): _____ Saturation Present? Yes _____ No _____ Depth (inches): _____ (includes capillary fringe)	Wetland Hydrology Present? Yes _____ No _____
Describe Recorded Data (stream gauge, monitoring well, aerial photos, previous inspections), if available:	
Remarks:	

VEGETATION (Four Strata) – Use scientific names of plants.

Sampling Point: _____

	Absolute % Cover	Dominant Species?	Indicator Status	
<u>Tree Stratum</u> (Plot size: _____)				Dominance Test worksheet:
1. _____	_____	_____	_____	Number of Dominant Species That Are OBL, FACW, or FAC: _____ (A)
2. _____	_____	_____	_____	Total Number of Dominant Species Across All Strata: _____ (B)
3. _____	_____	_____	_____	Percent of Dominant Species That Are OBL, FACW, or FAC: _____ (A/B)
4. _____	_____	_____	_____	
5. _____	_____	_____	_____	
6. _____	_____	_____	_____	
7. _____	_____	_____	_____	
8. _____	_____	_____	_____	
	_____ = Total Cover			Prevalence Index worksheet:
50% of total cover: _____	20% of total cover: _____			_____ Total % Cover of: _____ Multiply by:
				OBL species _____ x 1 = _____
				FACW species _____ x 2 = _____
				FAC species _____ x 3 = _____
				FACU species _____ x 4 = _____
				UPL species _____ x 5 = _____
				Column Totals: _____ (A) _____ (B)
				Prevalence Index = B/A = _____
<u>Sapling/Shrub Stratum</u> (Plot size: _____)				Hydrophytic Vegetation Indicators:
1. _____	_____	_____	_____	___ 1 - Rapid Test for Hydrophytic Vegetation
2. _____	_____	_____	_____	___ 2 - Dominance Test is >50%
3. _____	_____	_____	_____	___ 3 - Prevalence Index is ≤3.0 ¹
4. _____	_____	_____	_____	___ Problematic Hydrophytic Vegetation ¹ (Explain)
5. _____	_____	_____	_____	
6. _____	_____	_____	_____	
7. _____	_____	_____	_____	
8. _____	_____	_____	_____	
	_____ = Total Cover			¹ Indicators of hydric soil and wetland hydrology must be present, unless disturbed or problematic.
50% of total cover: _____	20% of total cover: _____			Definitions of Four Vegetation Strata:
				Tree – Woody plants, excluding vines, 3 in. (7.6 cm) or more in diameter at breast height (DBH), regardless of height.
				Sapling/Shrub – Woody plants, excluding vines, less than 3 in. DBH and greater than 3.28 ft (1 m) tall.
				Herb – All herbaceous (non-woody) plants, regardless of size, and woody plants less than 3.28 ft tall.
				Woody vine – All woody vines greater than 3.28 ft in height.
<u>Herb Stratum</u> (Plot size: _____)				
1. _____	_____	_____	_____	
2. _____	_____	_____	_____	
3. _____	_____	_____	_____	
4. _____	_____	_____	_____	
5. _____	_____	_____	_____	
6. _____	_____	_____	_____	
7. _____	_____	_____	_____	
8. _____	_____	_____	_____	
9. _____	_____	_____	_____	
10. _____	_____	_____	_____	
11. _____	_____	_____	_____	
12. _____	_____	_____	_____	
	_____ = Total Cover			
50% of total cover: _____	20% of total cover: _____			
<u>Woody Vine Stratum</u> (Plot size: _____)				
1. _____	_____	_____	_____	
2. _____	_____	_____	_____	
3. _____	_____	_____	_____	
4. _____	_____	_____	_____	
5. _____	_____	_____	_____	
	_____ = Total Cover			
50% of total cover: _____	20% of total cover: _____			
				Hydrophytic Vegetation Present? Yes _____ No _____
Remarks: (If observed, list morphological adaptations below).				

SOIL

Sampling Point: _____

Profile Description: (Describe to the depth needed to document the indicator or confirm the absence of indicators.)

Depth (inches)	Matrix		Redox Features				Texture	Remarks
	Color (moist)	%	Color (moist)	%	Type ¹	Loc ²		

¹Type: C=Concentration, D=Depletion, RM=Reduced Matrix, MS=Masked Sand Grains.

²Location: PL=Pore Lining, M=Matrix.

Hydric Soil Indicators: (Applicable to all LRRs, unless otherwise noted.)

- Histosol (A1)
- Histic Epipedon (A2)
- Black Histic (A3)
- Hydrogen Sulfide (A4)
- Stratified Layers (A5)
- Organic Bodies (A6) **(LRR P, T, U)**
- 5 cm Mucky Mineral (A7) **(LRR P, T, U)**
- Muck Presence (A8) **(LRR U)**
- 1 cm Muck (A9) **(LRR P, T)**
- Depleted Below Dark Surface (A11)
- Thick Dark Surface (A12)
- Coast Prairie Redox (A16) **(MLRA 150A)**
- Sandy Mucky Mineral (S1) **(LRR O, S)**
- Sandy Gleyed Matrix (S4)
- Sandy Redox (S5)
- Stripped Matrix (S6)
- Dark Surface (S7) **(LRR P, S, T, U)**

- Polyvalue Below Surface (S8) **(LRR S, T, U)**
- Thin Dark Surface (S9) **(LRR S, T, U)**
- Loamy Mucky Mineral (F1) **(LRR O)**
- Loamy Gleyed Matrix (F2)
- Depleted Matrix (F3)
- Redox Dark Surface (F6)
- Depleted Dark Surface (F7)
- Redox Depressions (F8)
- Marl (F10) **(LRR U)**
- Depleted Ochric (F11) **(MLRA 151)**
- Iron-Manganese Masses (F12) **(LRR O, P, T)**
- Umbric Surface (F13) **(LRR P, T, U)**
- Delta Ochric (F17) **(MLRA 151)**
- Reduced Vertic (F18) **(MLRA 150A, 150B)**
- Piedmont Floodplain Soils (F19) **(MLRA 149A)**
- Anomalous Bright Loamy Soils (F20) **(MLRA 149A, 153C, 153D)**

Indicators for Problematic Hydric Soils³:

- 1 cm Muck (A9) **(LRR O)**
- 2 cm Muck (A10) **(LRR S)**
- Reduced Vertic (F18) **(outside MLRA 150A,B)**
- Piedmont Floodplain Soils (F19) **(LRR P, S, T)**
- Anomalous Bright Loamy Soils (F20) **(MLRA 153B)**
- Red Parent Material (TF2)
- Very Shallow Dark Surface (TF12)
- Other (Explain in Remarks)

³Indicators of hydrophytic vegetation and wetland hydrology must be present, unless disturbed or problematic.

Restrictive Layer (if observed):

Type: _____

Depth (inches): _____

Hydric Soil Present? Yes _____ No _____

Remarks:

WETLAND DETERMINATION DATA FORM – Atlantic and Gulf Coastal Plain Region

Project/Site: _____ City/County: _____ Sampling Date: _____
 Applicant/Owner: _____ State: _____ Sampling Point: _____
 Investigator(s): _____ Section, Township, Range: _____
 Landform (hillslope, terrace, etc.): _____ Local relief (concave, convex, none): _____ Slope (%): _____
 Subregion (LRR or MLRA): _____ Lat: _____ Long: _____ Datum: _____
 Soil Map Unit Name: _____ NWI classification: _____

Are climatic / hydrologic conditions on the site typical for this time of year? Yes _____ No _____ (If no, explain in Remarks.)
 Are Vegetation _____, Soil _____, or Hydrology _____ significantly disturbed? Are "Normal Circumstances" present? Yes _____ No _____
 Are Vegetation _____, Soil _____, or Hydrology _____ naturally problematic? (If needed, explain any answers in Remarks.)

SUMMARY OF FINDINGS – Attach site map showing sampling point locations, transects, important features, etc.

Hydrophytic Vegetation Present? Yes _____ No _____ Hydric Soil Present? Yes _____ No _____ Wetland Hydrology Present? Yes _____ No _____	Is the Sampled Area within a Wetland? Yes _____ No _____
Remarks:	

HYDROLOGY

Wetland Hydrology Indicators: <u>Primary Indicators (minimum of one is required; check all that apply)</u> ___ Surface Water (A1) ___ Aquatic Fauna (B13) ___ High Water Table (A2) ___ Marl Deposits (B15) (LRR U) ___ Saturation (A3) ___ Hydrogen Sulfide Odor (C1) ___ Water Marks (B1) ___ Oxidized Rhizospheres along Living Roots (C3) ___ Sediment Deposits (B2) ___ Presence of Reduced Iron (C4) ___ Drift Deposits (B3) ___ Recent Iron Reduction in Tilled Soils (C6) ___ Algal Mat or Crust (B4) ___ Thin Muck Surface (C7) ___ Iron Deposits (B5) ___ Other (Explain in Remarks) ___ Inundation Visible on Aerial Imagery (B7) ___ Water-Stained Leaves (B9)	<u>Secondary Indicators (minimum of two required)</u> ___ Surface Soil Cracks (B6) ___ Sparsely Vegetated Concave Surface (B8) ___ Drainage Patterns (B10) ___ Moss Trim Lines (B16) ___ Dry-Season Water Table (C2) ___ Crayfish Burrows (C8) ___ Saturation Visible on Aerial Imagery (C9) ___ Geomorphic Position (D2) ___ Shallow Aquitard (D3) ___ FAC-Neutral Test (D5) ___ Sphagnum moss (D8) (LRR T, U)
Field Observations: Surface Water Present? Yes _____ No _____ Depth (inches): _____ Water Table Present? Yes _____ No _____ Depth (inches): _____ Saturation Present? Yes _____ No _____ Depth (inches): _____ (includes capillary fringe)	Wetland Hydrology Present? Yes _____ No _____
Describe Recorded Data (stream gauge, monitoring well, aerial photos, previous inspections), if available:	
Remarks:	

VEGETATION (Four Strata) – Use scientific names of plants.

Sampling Point: _____

	Absolute % Cover	Dominant Species?	Indicator Status	
<u>Tree Stratum</u> (Plot size: _____)				Dominance Test worksheet:
1. _____	_____	_____	_____	Number of Dominant Species That Are OBL, FACW, or FAC: _____ (A)
2. _____	_____	_____	_____	Total Number of Dominant Species Across All Strata: _____ (B)
3. _____	_____	_____	_____	Percent of Dominant Species That Are OBL, FACW, or FAC: _____ (A/B)
4. _____	_____	_____	_____	
5. _____	_____	_____	_____	
6. _____	_____	_____	_____	
7. _____	_____	_____	_____	
8. _____	_____	_____	_____	
	_____ = Total Cover			Prevalence Index worksheet:
50% of total cover: _____	20% of total cover: _____			_____ Total % Cover of: _____ Multiply by:
				OBL species _____ x 1 = _____
				FACW species _____ x 2 = _____
				FAC species _____ x 3 = _____
				FACU species _____ x 4 = _____
				UPL species _____ x 5 = _____
				Column Totals: _____ (A) _____ (B)
				Prevalence Index = B/A = _____
<u>Sapling/Shrub Stratum</u> (Plot size: _____)				Hydrophytic Vegetation Indicators:
1. _____	_____	_____	_____	___ 1 - Rapid Test for Hydrophytic Vegetation
2. _____	_____	_____	_____	___ 2 - Dominance Test is >50%
3. _____	_____	_____	_____	___ 3 - Prevalence Index is ≤3.0 ¹
4. _____	_____	_____	_____	___ Problematic Hydrophytic Vegetation ¹ (Explain)
5. _____	_____	_____	_____	
6. _____	_____	_____	_____	
7. _____	_____	_____	_____	
8. _____	_____	_____	_____	
	_____ = Total Cover			¹ Indicators of hydric soil and wetland hydrology must be present, unless disturbed or problematic.
50% of total cover: _____	20% of total cover: _____			Definitions of Four Vegetation Strata:
				Tree – Woody plants, excluding vines, 3 in. (7.6 cm) or more in diameter at breast height (DBH), regardless of height.
				Sapling/Shrub – Woody plants, excluding vines, less than 3 in. DBH and greater than 3.28 ft (1 m) tall.
				Herb – All herbaceous (non-woody) plants, regardless of size, and woody plants less than 3.28 ft tall.
				Woody vine – All woody vines greater than 3.28 ft in height.
<u>Herb Stratum</u> (Plot size: _____)				
1. _____	_____	_____	_____	
2. _____	_____	_____	_____	
3. _____	_____	_____	_____	
4. _____	_____	_____	_____	
5. _____	_____	_____	_____	
6. _____	_____	_____	_____	
7. _____	_____	_____	_____	
8. _____	_____	_____	_____	
9. _____	_____	_____	_____	
10. _____	_____	_____	_____	
11. _____	_____	_____	_____	
12. _____	_____	_____	_____	
	_____ = Total Cover			
50% of total cover: _____	20% of total cover: _____			
<u>Woody Vine Stratum</u> (Plot size: _____)				
1. _____	_____	_____	_____	
2. _____	_____	_____	_____	
3. _____	_____	_____	_____	
4. _____	_____	_____	_____	
5. _____	_____	_____	_____	
	_____ = Total Cover			
50% of total cover: _____	20% of total cover: _____			
Remarks: (If observed, list morphological adaptations below).				Hydrophytic Vegetation Present? Yes _____ No _____

SOIL

Sampling Point: _____

Profile Description: (Describe to the depth needed to document the indicator or confirm the absence of indicators.)

Depth (inches)	Matrix		Redox Features				Texture	Remarks
	Color (moist)	%	Color (moist)	%	Type ¹	Loc ²		

¹Type: C=Concentration, D=Depletion, RM=Reduced Matrix, MS=Masked Sand Grains. ²Location: PL=Pore Lining, M=Matrix.

Hydric Soil Indicators: (Applicable to all LRRs, unless otherwise noted.)	Indicators for Problematic Hydric Soils ³ :
<input type="checkbox"/> Histosol (A1) <input type="checkbox"/> Histic Epipedon (A2) <input type="checkbox"/> Black Histic (A3) <input type="checkbox"/> Hydrogen Sulfide (A4) <input type="checkbox"/> Stratified Layers (A5) <input type="checkbox"/> Organic Bodies (A6) (LRR P, T, U) <input type="checkbox"/> 5 cm Mucky Mineral (A7) (LRR P, T, U) <input type="checkbox"/> Muck Presence (A8) (LRR U) <input type="checkbox"/> 1 cm Muck (A9) (LRR P, T) <input type="checkbox"/> Depleted Below Dark Surface (A11) <input type="checkbox"/> Thick Dark Surface (A12) <input type="checkbox"/> Coast Prairie Redox (A16) (MLRA 150A) <input type="checkbox"/> Sandy Mucky Mineral (S1) (LRR O, S) <input type="checkbox"/> Sandy Gleyed Matrix (S4) <input type="checkbox"/> Sandy Redox (S5) <input type="checkbox"/> Stripped Matrix (S6) <input type="checkbox"/> Dark Surface (S7) (LRR P, S, T, U)	<input type="checkbox"/> Polyvalue Below Surface (S8) (LRR S, T, U) <input type="checkbox"/> Thin Dark Surface (S9) (LRR S, T, U) <input type="checkbox"/> Loamy Mucky Mineral (F1) (LRR O) <input type="checkbox"/> Loamy Gleyed Matrix (F2) <input type="checkbox"/> Depleted Matrix (F3) <input type="checkbox"/> Redox Dark Surface (F6) <input type="checkbox"/> Depleted Dark Surface (F7) <input type="checkbox"/> Redox Depressions (F8) <input type="checkbox"/> Marl (F10) (LRR U) <input type="checkbox"/> Depleted Ochric (F11) (MLRA 151) <input type="checkbox"/> Iron-Manganese Masses (F12) (LRR O, P, T) <input type="checkbox"/> Umbric Surface (F13) (LRR P, T, U) <input type="checkbox"/> Delta Ochric (F17) (MLRA 151) <input type="checkbox"/> Reduced Vertic (F18) (MLRA 150A, 150B) <input type="checkbox"/> Piedmont Floodplain Soils (F19) (MLRA 149A) <input type="checkbox"/> Anomalous Bright Loamy Soils (F20) (MLRA 149A, 153C, 153D)
	<input type="checkbox"/> 1 cm Muck (A9) (LRR O) <input type="checkbox"/> 2 cm Muck (A10) (LRR S) <input type="checkbox"/> Reduced Vertic (F18) (outside MLRA 150A,B) <input type="checkbox"/> Piedmont Floodplain Soils (F19) (LRR P, S, T) <input type="checkbox"/> Anomalous Bright Loamy Soils (F20) (MLRA 153B) <input type="checkbox"/> Red Parent Material (TF2) <input type="checkbox"/> Very Shallow Dark Surface (TF12) <input type="checkbox"/> Other (Explain in Remarks)

Restrictive Layer (if observed):
 Type: _____
 Depth (inches): _____

Hydric Soil Present? Yes _____ No _____

Remarks:

WETLAND DETERMINATION DATA FORM – Atlantic and Gulf Coastal Plain Region

Project/Site: _____ City/County: _____ Sampling Date: _____
 Applicant/Owner: _____ State: _____ Sampling Point: _____
 Investigator(s): _____ Section, Township, Range: _____
 Landform (hillslope, terrace, etc.): _____ Local relief (concave, convex, none): _____ Slope (%): _____
 Subregion (LRR or MLRA): _____ Lat: _____ Long: _____ Datum: _____
 Soil Map Unit Name: _____ NWI classification: _____

Are climatic / hydrologic conditions on the site typical for this time of year? Yes _____ No _____ (If no, explain in Remarks.)
 Are Vegetation _____, Soil _____, or Hydrology _____ significantly disturbed? Are "Normal Circumstances" present? Yes _____ No _____
 Are Vegetation _____, Soil _____, or Hydrology _____ naturally problematic? (If needed, explain any answers in Remarks.)

SUMMARY OF FINDINGS – Attach site map showing sampling point locations, transects, important features, etc.

Hydrophytic Vegetation Present? Yes _____ No _____ Hydric Soil Present? Yes _____ No _____ Wetland Hydrology Present? Yes _____ No _____	Is the Sampled Area within a Wetland? Yes _____ No _____
Remarks:	

HYDROLOGY

Wetland Hydrology Indicators: <u>Primary Indicators (minimum of one is required; check all that apply)</u> ___ Surface Water (A1) ___ Aquatic Fauna (B13) ___ High Water Table (A2) ___ Marl Deposits (B15) (LRR U) ___ Saturation (A3) ___ Hydrogen Sulfide Odor (C1) ___ Water Marks (B1) ___ Oxidized Rhizospheres along Living Roots (C3) ___ Sediment Deposits (B2) ___ Presence of Reduced Iron (C4) ___ Drift Deposits (B3) ___ Recent Iron Reduction in Tilled Soils (C6) ___ Algal Mat or Crust (B4) ___ Thin Muck Surface (C7) ___ Iron Deposits (B5) ___ Other (Explain in Remarks) ___ Inundation Visible on Aerial Imagery (B7) ___ Water-Stained Leaves (B9)	<u>Secondary Indicators (minimum of two required)</u> ___ Surface Soil Cracks (B6) ___ Sparsely Vegetated Concave Surface (B8) ___ Drainage Patterns (B10) ___ Moss Trim Lines (B16) ___ Dry-Season Water Table (C2) ___ Crayfish Burrows (C8) ___ Saturation Visible on Aerial Imagery (C9) ___ Geomorphic Position (D2) ___ Shallow Aquitard (D3) ___ FAC-Neutral Test (D5) ___ Sphagnum moss (D8) (LRR T, U)
Field Observations: Surface Water Present? Yes _____ No _____ Depth (inches): _____ Water Table Present? Yes _____ No _____ Depth (inches): _____ Saturation Present? Yes _____ No _____ Depth (inches): _____ (includes capillary fringe)	Wetland Hydrology Present? Yes _____ No _____
Describe Recorded Data (stream gauge, monitoring well, aerial photos, previous inspections), if available:	
Remarks:	

VEGETATION (Four Strata) – Use scientific names of plants.

Sampling Point: _____

	Absolute % Cover	Dominant Species?	Indicator Status	
Tree Stratum (Plot size: _____)				
1. _____	_____	_____	_____	
2. _____	_____	_____	_____	
3. _____	_____	_____	_____	
4. _____	_____	_____	_____	
5. _____	_____	_____	_____	
6. _____	_____	_____	_____	
7. _____	_____	_____	_____	
8. _____	_____	_____	_____	
_____ = Total Cover				
50% of total cover: _____ 20% of total cover: _____				
Sapling/Shrub Stratum (Plot size: _____)				
1. _____	_____	_____	_____	
2. _____	_____	_____	_____	
3. _____	_____	_____	_____	
4. _____	_____	_____	_____	
5. _____	_____	_____	_____	
6. _____	_____	_____	_____	
7. _____	_____	_____	_____	
8. _____	_____	_____	_____	
_____ = Total Cover				
50% of total cover: _____ 20% of total cover: _____				
Herb Stratum (Plot size: _____)				
1. _____	_____	_____	_____	
2. _____	_____	_____	_____	
3. _____	_____	_____	_____	
4. _____	_____	_____	_____	
5. _____	_____	_____	_____	
6. _____	_____	_____	_____	
7. _____	_____	_____	_____	
8. _____	_____	_____	_____	
9. _____	_____	_____	_____	
10. _____	_____	_____	_____	
11. _____	_____	_____	_____	
12. _____	_____	_____	_____	
_____ = Total Cover				
50% of total cover: _____ 20% of total cover: _____				
Woody Vine Stratum (Plot size: _____)				
1. _____	_____	_____	_____	
2. _____	_____	_____	_____	
3. _____	_____	_____	_____	
4. _____	_____	_____	_____	
5. _____	_____	_____	_____	
_____ = Total Cover				
50% of total cover: _____ 20% of total cover: _____				
Dominance Test worksheet:				
Number of Dominant Species That Are OBL, FACW, or FAC: _____ (A)				
Total Number of Dominant Species Across All Strata: _____ (B)				
Percent of Dominant Species That Are OBL, FACW, or FAC: _____ (A/B)				
Prevalence Index worksheet:				
Total % Cover of:		Multiply by:		
OBL species	_____	x 1 =	_____	
FACW species	_____	x 2 =	_____	
FAC species	_____	x 3 =	_____	
FACU species	_____	x 4 =	_____	
UPL species	_____	x 5 =	_____	
Column Totals:	_____ (A)	_____ (B)		
Prevalence Index = B/A = _____				
Hydrophytic Vegetation Indicators:				
___ 1 - Rapid Test for Hydrophytic Vegetation				
___ 2 - Dominance Test is >50%				
___ 3 - Prevalence Index is ≤3.0 ¹				
___ Problematic Hydrophytic Vegetation ¹ (Explain)				
¹ Indicators of hydric soil and wetland hydrology must be present, unless disturbed or problematic.				
Definitions of Four Vegetation Strata:				
Tree – Woody plants, excluding vines, 3 in. (7.6 cm) or more in diameter at breast height (DBH), regardless of height.				
Sapling/Shrub – Woody plants, excluding vines, less than 3 in. DBH and greater than 3.28 ft (1 m) tall.				
Herb – All herbaceous (non-woody) plants, regardless of size, and woody plants less than 3.28 ft tall.				
Woody vine – All woody vines greater than 3.28 ft in height.				
Hydrophytic Vegetation Present? Yes _____ No _____				
Remarks: (If observed, list morphological adaptations below).				

WETLAND DETERMINATION DATA FORM – Atlantic and Gulf Coastal Plain Region

Project/Site: _____ City/County: _____ Sampling Date: _____
 Applicant/Owner: _____ State: _____ Sampling Point: _____
 Investigator(s): _____ Section, Township, Range: _____
 Landform (hillslope, terrace, etc.): _____ Local relief (concave, convex, none): _____ Slope (%): _____
 Subregion (LRR or MLRA): _____ Lat: _____ Long: _____ Datum: _____
 Soil Map Unit Name: _____ NWI classification: _____

Are climatic / hydrologic conditions on the site typical for this time of year? Yes _____ No _____ (If no, explain in Remarks.)
 Are Vegetation _____, Soil _____, or Hydrology _____ significantly disturbed? Are "Normal Circumstances" present? Yes _____ No _____
 Are Vegetation _____, Soil _____, or Hydrology _____ naturally problematic? (If needed, explain any answers in Remarks.)

SUMMARY OF FINDINGS – Attach site map showing sampling point locations, transects, important features, etc.

Hydrophytic Vegetation Present? Yes _____ No _____ Hydric Soil Present? Yes _____ No _____ Wetland Hydrology Present? Yes _____ No _____	Is the Sampled Area within a Wetland? Yes _____ No _____
Remarks:	

HYDROLOGY

Wetland Hydrology Indicators: <u>Primary Indicators (minimum of one is required; check all that apply)</u> ___ Surface Water (A1) ___ Aquatic Fauna (B13) ___ High Water Table (A2) ___ Marl Deposits (B15) (LRR U) ___ Saturation (A3) ___ Hydrogen Sulfide Odor (C1) ___ Water Marks (B1) ___ Oxidized Rhizospheres along Living Roots (C3) ___ Sediment Deposits (B2) ___ Presence of Reduced Iron (C4) ___ Drift Deposits (B3) ___ Recent Iron Reduction in Tilled Soils (C6) ___ Algal Mat or Crust (B4) ___ Thin Muck Surface (C7) ___ Iron Deposits (B5) ___ Other (Explain in Remarks) ___ Inundation Visible on Aerial Imagery (B7) ___ Water-Stained Leaves (B9)	<u>Secondary Indicators (minimum of two required)</u> ___ Surface Soil Cracks (B6) ___ Sparsely Vegetated Concave Surface (B8) ___ Drainage Patterns (B10) ___ Moss Trim Lines (B16) ___ Dry-Season Water Table (C2) ___ Crayfish Burrows (C8) ___ Saturation Visible on Aerial Imagery (C9) ___ Geomorphic Position (D2) ___ Shallow Aquitard (D3) ___ FAC-Neutral Test (D5) ___ Sphagnum moss (D8) (LRR T, U)
Field Observations: Surface Water Present? Yes _____ No _____ Depth (inches): _____ Water Table Present? Yes _____ No _____ Depth (inches): _____ Saturation Present? Yes _____ No _____ Depth (inches): _____ (includes capillary fringe)	Wetland Hydrology Present? Yes _____ No _____
Describe Recorded Data (stream gauge, monitoring well, aerial photos, previous inspections), if available:	
Remarks:	

VEGETATION (Four Strata) – Use scientific names of plants.

Sampling Point: _____

	Absolute % Cover	Dominant Species?	Indicator Status	
<u>Tree Stratum</u> (Plot size: _____)				Dominance Test worksheet:
1. _____	_____	_____	_____	Number of Dominant Species That Are OBL, FACW, or FAC: _____ (A)
2. _____	_____	_____	_____	Total Number of Dominant Species Across All Strata: _____ (B)
3. _____	_____	_____	_____	Percent of Dominant Species That Are OBL, FACW, or FAC: _____ (A/B)
4. _____	_____	_____	_____	
5. _____	_____	_____	_____	
6. _____	_____	_____	_____	
7. _____	_____	_____	_____	
8. _____	_____	_____	_____	
	_____ = Total Cover			Prevalence Index worksheet:
50% of total cover: _____		20% of total cover: _____		_____ Total % Cover of: _____ Multiply by:
				OBL species _____ x 1 = _____
				FACW species _____ x 2 = _____
				FAC species _____ x 3 = _____
				FACU species _____ x 4 = _____
				UPL species _____ x 5 = _____
				Column Totals: _____ (A) _____ (B)
				Prevalence Index = B/A = _____
<u>Sapling/Shrub Stratum</u> (Plot size: _____)				Hydrophytic Vegetation Indicators:
1. _____	_____	_____	_____	___ 1 - Rapid Test for Hydrophytic Vegetation
2. _____	_____	_____	_____	___ 2 - Dominance Test is >50%
3. _____	_____	_____	_____	___ 3 - Prevalence Index is ≤3.0 ¹
4. _____	_____	_____	_____	___ Problematic Hydrophytic Vegetation ¹ (Explain)
5. _____	_____	_____	_____	
6. _____	_____	_____	_____	
7. _____	_____	_____	_____	
8. _____	_____	_____	_____	
	_____ = Total Cover			¹ Indicators of hydric soil and wetland hydrology must be present, unless disturbed or problematic.
50% of total cover: _____		20% of total cover: _____		Definitions of Four Vegetation Strata:
				Tree – Woody plants, excluding vines, 3 in. (7.6 cm) or more in diameter at breast height (DBH), regardless of height.
				Sapling/Shrub – Woody plants, excluding vines, less than 3 in. DBH and greater than 3.28 ft (1 m) tall.
				Herb – All herbaceous (non-woody) plants, regardless of size, and woody plants less than 3.28 ft tall.
				Woody vine – All woody vines greater than 3.28 ft in height.
<u>Herb Stratum</u> (Plot size: _____)				
1. _____	_____	_____	_____	
2. _____	_____	_____	_____	
3. _____	_____	_____	_____	
4. _____	_____	_____	_____	
5. _____	_____	_____	_____	
6. _____	_____	_____	_____	
7. _____	_____	_____	_____	
8. _____	_____	_____	_____	
9. _____	_____	_____	_____	
10. _____	_____	_____	_____	
11. _____	_____	_____	_____	
12. _____	_____	_____	_____	
	_____ = Total Cover			
50% of total cover: _____		20% of total cover: _____		
<u>Woody Vine Stratum</u> (Plot size: _____)				
1. _____	_____	_____	_____	
2. _____	_____	_____	_____	
3. _____	_____	_____	_____	
4. _____	_____	_____	_____	
5. _____	_____	_____	_____	
	_____ = Total Cover			Hydrophytic Vegetation Present? Yes _____ No _____
50% of total cover: _____		20% of total cover: _____		
Remarks: (If observed, list morphological adaptations below).				

WETLAND DETERMINATION DATA FORM – Atlantic and Gulf Coastal Plain Region

Project/Site: _____ City/County: _____ Sampling Date: _____
 Applicant/Owner: _____ State: _____ Sampling Point: _____
 Investigator(s): _____ Section, Township, Range: _____
 Landform (hillslope, terrace, etc.): _____ Local relief (concave, convex, none): _____ Slope (%): _____
 Subregion (LRR or MLRA): _____ Lat: _____ Long: _____ Datum: _____
 Soil Map Unit Name: _____ NWI classification: _____

Are climatic / hydrologic conditions on the site typical for this time of year? Yes _____ No _____ (If no, explain in Remarks.)
 Are Vegetation _____, Soil _____, or Hydrology _____ significantly disturbed? Are "Normal Circumstances" present? Yes _____ No _____
 Are Vegetation _____, Soil _____, or Hydrology _____ naturally problematic? (If needed, explain any answers in Remarks.)

SUMMARY OF FINDINGS – Attach site map showing sampling point locations, transects, important features, etc.

Hydrophytic Vegetation Present? Yes _____ No _____ Hydric Soil Present? Yes _____ No _____ Wetland Hydrology Present? Yes _____ No _____	Is the Sampled Area within a Wetland? Yes _____ No _____
Remarks:	

HYDROLOGY

Wetland Hydrology Indicators: <u>Primary Indicators (minimum of one is required; check all that apply)</u> ___ Surface Water (A1) ___ Aquatic Fauna (B13) ___ High Water Table (A2) ___ Marl Deposits (B15) (LRR U) ___ Saturation (A3) ___ Hydrogen Sulfide Odor (C1) ___ Water Marks (B1) ___ Oxidized Rhizospheres along Living Roots (C3) ___ Sediment Deposits (B2) ___ Presence of Reduced Iron (C4) ___ Drift Deposits (B3) ___ Recent Iron Reduction in Tilled Soils (C6) ___ Algal Mat or Crust (B4) ___ Thin Muck Surface (C7) ___ Iron Deposits (B5) ___ Other (Explain in Remarks) ___ Inundation Visible on Aerial Imagery (B7) ___ Water-Stained Leaves (B9)	<u>Secondary Indicators (minimum of two required)</u> ___ Surface Soil Cracks (B6) ___ Sparsely Vegetated Concave Surface (B8) ___ Drainage Patterns (B10) ___ Moss Trim Lines (B16) ___ Dry-Season Water Table (C2) ___ Crayfish Burrows (C8) ___ Saturation Visible on Aerial Imagery (C9) ___ Geomorphic Position (D2) ___ Shallow Aquitard (D3) ___ FAC-Neutral Test (D5) ___ Sphagnum moss (D8) (LRR T, U)
Field Observations: Surface Water Present? Yes _____ No _____ Depth (inches): _____ Water Table Present? Yes _____ No _____ Depth (inches): _____ Saturation Present? Yes _____ No _____ Depth (inches): _____ (includes capillary fringe)	Wetland Hydrology Present? Yes _____ No _____
Describe Recorded Data (stream gauge, monitoring well, aerial photos, previous inspections), if available:	
Remarks:	

VEGETATION (Four Strata) – Use scientific names of plants.

Sampling Point: _____

	Absolute % Cover	Dominant Species?	Indicator Status	
<u>Tree Stratum</u> (Plot size: _____)				Dominance Test worksheet:
1. _____	_____	_____	_____	Number of Dominant Species That Are OBL, FACW, or FAC: _____ (A)
2. _____	_____	_____	_____	Total Number of Dominant Species Across All Strata: _____ (B)
3. _____	_____	_____	_____	Percent of Dominant Species That Are OBL, FACW, or FAC: _____ (A/B)
4. _____	_____	_____	_____	
5. _____	_____	_____	_____	
6. _____	_____	_____	_____	
7. _____	_____	_____	_____	
8. _____	_____	_____	_____	
	_____ = Total Cover			Prevalence Index worksheet:
50% of total cover: _____	20% of total cover: _____			_____ Total % Cover of: _____ Multiply by:
				OBL species _____ x 1 = _____
				FACW species _____ x 2 = _____
				FAC species _____ x 3 = _____
				FACU species _____ x 4 = _____
				UPL species _____ x 5 = _____
				Column Totals: _____ (A) _____ (B)
				Prevalence Index = B/A = _____
<u>Sapling/Shrub Stratum</u> (Plot size: _____)				Hydrophytic Vegetation Indicators:
1. _____	_____	_____	_____	___ 1 - Rapid Test for Hydrophytic Vegetation
2. _____	_____	_____	_____	___ 2 - Dominance Test is >50%
3. _____	_____	_____	_____	___ 3 - Prevalence Index is ≤3.0 ¹
4. _____	_____	_____	_____	___ Problematic Hydrophytic Vegetation ¹ (Explain)
5. _____	_____	_____	_____	
6. _____	_____	_____	_____	
7. _____	_____	_____	_____	
8. _____	_____	_____	_____	
	_____ = Total Cover			¹ Indicators of hydric soil and wetland hydrology must be present, unless disturbed or problematic.
50% of total cover: _____	20% of total cover: _____			Definitions of Four Vegetation Strata:
				Tree – Woody plants, excluding vines, 3 in. (7.6 cm) or more in diameter at breast height (DBH), regardless of height.
				Sapling/Shrub – Woody plants, excluding vines, less than 3 in. DBH and greater than 3.28 ft (1 m) tall.
				Herb – All herbaceous (non-woody) plants, regardless of size, and woody plants less than 3.28 ft tall.
				Woody vine – All woody vines greater than 3.28 ft in height.
<u>Herb Stratum</u> (Plot size: _____)				
1. _____	_____	_____	_____	
2. _____	_____	_____	_____	
3. _____	_____	_____	_____	
4. _____	_____	_____	_____	
5. _____	_____	_____	_____	
6. _____	_____	_____	_____	
7. _____	_____	_____	_____	
8. _____	_____	_____	_____	
9. _____	_____	_____	_____	
10. _____	_____	_____	_____	
11. _____	_____	_____	_____	
12. _____	_____	_____	_____	
	_____ = Total Cover			
50% of total cover: _____	20% of total cover: _____			
<u>Woody Vine Stratum</u> (Plot size: _____)				
1. _____	_____	_____	_____	
2. _____	_____	_____	_____	
3. _____	_____	_____	_____	
4. _____	_____	_____	_____	
5. _____	_____	_____	_____	
	_____ = Total Cover			
50% of total cover: _____	20% of total cover: _____			
				Hydrophytic Vegetation Present? Yes _____ No _____
Remarks: (If observed, list morphological adaptations below).				

SOIL

Sampling Point: _____

Profile Description: (Describe to the depth needed to document the indicator or confirm the absence of indicators.)

Depth (inches)	Matrix		Redox Features				Texture	Remarks
	Color (moist)	%	Color (moist)	%	Type ¹	Loc ²		

¹Type: C=Concentration, D=Depletion, RM=Reduced Matrix, MS=Masked Sand Grains.

²Location: PL=Pore Lining, M=Matrix.

Hydric Soil Indicators: (Applicable to all LRRs, unless otherwise noted.)

- Histosol (A1)
- Histic Epipedon (A2)
- Black Histic (A3)
- Hydrogen Sulfide (A4)
- Stratified Layers (A5)
- Organic Bodies (A6) **(LRR P, T, U)**
- 5 cm Mucky Mineral (A7) **(LRR P, T, U)**
- Muck Presence (A8) **(LRR U)**
- 1 cm Muck (A9) **(LRR P, T)**
- Depleted Below Dark Surface (A11)
- Thick Dark Surface (A12)
- Coast Prairie Redox (A16) **(MLRA 150A)**
- Sandy Mucky Mineral (S1) **(LRR O, S)**
- Sandy Gleyed Matrix (S4)
- Sandy Redox (S5)
- Stripped Matrix (S6)
- Dark Surface (S7) **(LRR P, S, T, U)**

- Polyvalue Below Surface (S8) **(LRR S, T, U)**
- Thin Dark Surface (S9) **(LRR S, T, U)**
- Loamy Mucky Mineral (F1) **(LRR O)**
- Loamy Gleyed Matrix (F2)
- Depleted Matrix (F3)
- Redox Dark Surface (F6)
- Depleted Dark Surface (F7)
- Redox Depressions (F8)
- Marl (F10) **(LRR U)**
- Depleted Ochric (F11) **(MLRA 151)**
- Iron-Manganese Masses (F12) **(LRR O, P, T)**
- Umbric Surface (F13) **(LRR P, T, U)**
- Delta Ochric (F17) **(MLRA 151)**
- Reduced Vertic (F18) **(MLRA 150A, 150B)**
- Piedmont Floodplain Soils (F19) **(MLRA 149A)**
- Anomalous Bright Loamy Soils (F20) **(MLRA 149A, 153C, 153D)**

Indicators for Problematic Hydric Soils³:

- 1 cm Muck (A9) **(LRR O)**
- 2 cm Muck (A10) **(LRR S)**
- Reduced Vertic (F18) **(outside MLRA 150A,B)**
- Piedmont Floodplain Soils (F19) **(LRR P, S, T)**
- Anomalous Bright Loamy Soils (F20) **(MLRA 153B)**
- Red Parent Material (TF2)
- Very Shallow Dark Surface (TF12)
- Other (Explain in Remarks)

³Indicators of hydrophytic vegetation and wetland hydrology must be present, unless disturbed or problematic.

Restrictive Layer (if observed):

Type: _____

Depth (inches): _____

Hydric Soil Present? Yes _____ No _____

Remarks:

WETLAND DETERMINATION DATA FORM – Atlantic and Gulf Coastal Plain Region

Project/Site: _____ City/County: _____ Sampling Date: _____
 Applicant/Owner: _____ State: _____ Sampling Point: _____
 Investigator(s): _____ Section, Township, Range: _____
 Landform (hillslope, terrace, etc.): _____ Local relief (concave, convex, none): _____ Slope (%): _____
 Subregion (LRR or MLRA): _____ Lat: _____ Long: _____ Datum: _____
 Soil Map Unit Name: _____ NWI classification: _____

Are climatic / hydrologic conditions on the site typical for this time of year? Yes _____ No _____ (If no, explain in Remarks.)
 Are Vegetation _____, Soil _____, or Hydrology _____ significantly disturbed? Are "Normal Circumstances" present? Yes _____ No _____
 Are Vegetation _____, Soil _____, or Hydrology _____ naturally problematic? (If needed, explain any answers in Remarks.)

SUMMARY OF FINDINGS – Attach site map showing sampling point locations, transects, important features, etc.

Hydrophytic Vegetation Present? Yes _____ No _____ Hydric Soil Present? Yes _____ No _____ Wetland Hydrology Present? Yes _____ No _____	Is the Sampled Area within a Wetland? Yes _____ No _____
Remarks:	

HYDROLOGY

Wetland Hydrology Indicators: <u>Primary Indicators (minimum of one is required; check all that apply)</u> ___ Surface Water (A1) ___ Aquatic Fauna (B13) ___ High Water Table (A2) ___ Marl Deposits (B15) (LRR U) ___ Saturation (A3) ___ Hydrogen Sulfide Odor (C1) ___ Water Marks (B1) ___ Oxidized Rhizospheres along Living Roots (C3) ___ Sediment Deposits (B2) ___ Presence of Reduced Iron (C4) ___ Drift Deposits (B3) ___ Recent Iron Reduction in Tilled Soils (C6) ___ Algal Mat or Crust (B4) ___ Thin Muck Surface (C7) ___ Iron Deposits (B5) ___ Other (Explain in Remarks) ___ Inundation Visible on Aerial Imagery (B7) ___ Water-Stained Leaves (B9)	<u>Secondary Indicators (minimum of two required)</u> ___ Surface Soil Cracks (B6) ___ Sparsely Vegetated Concave Surface (B8) ___ Drainage Patterns (B10) ___ Moss Trim Lines (B16) ___ Dry-Season Water Table (C2) ___ Crayfish Burrows (C8) ___ Saturation Visible on Aerial Imagery (C9) ___ Geomorphic Position (D2) ___ Shallow Aquitard (D3) ___ FAC-Neutral Test (D5) ___ Sphagnum moss (D8) (LRR T, U)
Field Observations: Surface Water Present? Yes _____ No _____ Depth (inches): _____ Water Table Present? Yes _____ No _____ Depth (inches): _____ Saturation Present? Yes _____ No _____ Depth (inches): _____ (includes capillary fringe)	Wetland Hydrology Present? Yes _____ No _____
Describe Recorded Data (stream gauge, monitoring well, aerial photos, previous inspections), if available:	
Remarks:	

VEGETATION (Four Strata) – Use scientific names of plants.

Sampling Point: _____

	Absolute % Cover	Dominant Species?	Indicator Status	
Tree Stratum (Plot size: _____)				
1.	_____	_____	_____	
2.	_____	_____	_____	
3.	_____	_____	_____	
4.	_____	_____	_____	
5.	_____	_____	_____	
6.	_____	_____	_____	
7.	_____	_____	_____	
8.	_____	_____	_____	
_____ = Total Cover				
50% of total cover: _____ 20% of total cover: _____				
Sapling/Shrub Stratum (Plot size: _____)				
1.	_____	_____	_____	
2.	_____	_____	_____	
3.	_____	_____	_____	
4.	_____	_____	_____	
5.	_____	_____	_____	
6.	_____	_____	_____	
7.	_____	_____	_____	
8.	_____	_____	_____	
_____ = Total Cover				
50% of total cover: _____ 20% of total cover: _____				
Herb Stratum (Plot size: _____)				
1.	_____	_____	_____	
2.	_____	_____	_____	
3.	_____	_____	_____	
4.	_____	_____	_____	
5.	_____	_____	_____	
6.	_____	_____	_____	
7.	_____	_____	_____	
8.	_____	_____	_____	
9.	_____	_____	_____	
10.	_____	_____	_____	
11.	_____	_____	_____	
12.	_____	_____	_____	
_____ = Total Cover				
50% of total cover: _____ 20% of total cover: _____				
Woody Vine Stratum (Plot size: _____)				
1.	_____	_____	_____	
2.	_____	_____	_____	
3.	_____	_____	_____	
4.	_____	_____	_____	
5.	_____	_____	_____	
_____ = Total Cover				
50% of total cover: _____ 20% of total cover: _____				
Dominance Test worksheet:				
Number of Dominant Species That Are OBL, FACW, or FAC: _____ (A)				
Total Number of Dominant Species Across All Strata: _____ (B)				
Percent of Dominant Species That Are OBL, FACW, or FAC: _____ (A/B)				
Prevalence Index worksheet:				
Total % Cover of:		Multiply by:		
OBL species	_____	x 1 =	_____	
FACW species	_____	x 2 =	_____	
FAC species	_____	x 3 =	_____	
FACU species	_____	x 4 =	_____	
UPL species	_____	x 5 =	_____	
Column Totals:	_____ (A)	_____ (B)		
Prevalence Index = B/A = _____				
Hydrophytic Vegetation Indicators:				
___ 1 - Rapid Test for Hydrophytic Vegetation				
___ 2 - Dominance Test is >50%				
___ 3 - Prevalence Index is ≤3.0 ¹				
___ Problematic Hydrophytic Vegetation ¹ (Explain)				
¹ Indicators of hydric soil and wetland hydrology must be present, unless disturbed or problematic.				
Definitions of Four Vegetation Strata:				
Tree – Woody plants, excluding vines, 3 in. (7.6 cm) or more in diameter at breast height (DBH), regardless of height.				
Sapling/Shrub – Woody plants, excluding vines, less than 3 in. DBH and greater than 3.28 ft (1 m) tall.				
Herb – All herbaceous (non-woody) plants, regardless of size, and woody plants less than 3.28 ft tall.				
Woody vine – All woody vines greater than 3.28 ft in height.				
Hydrophytic Vegetation Present? Yes _____ No _____				
Remarks: (If observed, list morphological adaptations below).				

SOIL

Sampling Point: _____

Profile Description: (Describe to the depth needed to document the indicator or confirm the absence of indicators.)

Depth (inches)	Matrix		Redox Features				Texture	Remarks
	Color (moist)	%	Color (moist)	%	Type ¹	Loc ²		

¹Type: C=Concentration, D=Depletion, RM=Reduced Matrix, MS=Masked Sand Grains.

²Location: PL=Pore Lining, M=Matrix.

Hydric Soil Indicators: (Applicable to all LRRs, unless otherwise noted.)

- Histosol (A1)
- Histic Epipedon (A2)
- Black Histic (A3)
- Hydrogen Sulfide (A4)
- Stratified Layers (A5)
- Organic Bodies (A6) **(LRR P, T, U)**
- 5 cm Mucky Mineral (A7) **(LRR P, T, U)**
- Muck Presence (A8) **(LRR U)**
- 1 cm Muck (A9) **(LRR P, T)**
- Depleted Below Dark Surface (A11)
- Thick Dark Surface (A12)
- Coast Prairie Redox (A16) **(MLRA 150A)**
- Sandy Mucky Mineral (S1) **(LRR O, S)**
- Sandy Gleyed Matrix (S4)
- Sandy Redox (S5)
- Stripped Matrix (S6)
- Dark Surface (S7) **(LRR P, S, T, U)**

- Polyvalue Below Surface (S8) **(LRR S, T, U)**
- Thin Dark Surface (S9) **(LRR S, T, U)**
- Loamy Mucky Mineral (F1) **(LRR O)**
- Loamy Gleyed Matrix (F2)
- Depleted Matrix (F3)
- Redox Dark Surface (F6)
- Depleted Dark Surface (F7)
- Redox Depressions (F8)
- Marl (F10) **(LRR U)**
- Depleted Ochric (F11) **(MLRA 151)**
- Iron-Manganese Masses (F12) **(LRR O, P, T)**
- Umbric Surface (F13) **(LRR P, T, U)**
- Delta Ochric (F17) **(MLRA 151)**
- Reduced Vertic (F18) **(MLRA 150A, 150B)**
- Piedmont Floodplain Soils (F19) **(MLRA 149A)**
- Anomalous Bright Loamy Soils (F20) **(MLRA 149A, 153C, 153D)**

Indicators for Problematic Hydric Soils³:

- 1 cm Muck (A9) **(LRR O)**
- 2 cm Muck (A10) **(LRR S)**
- Reduced Vertic (F18) **(outside MLRA 150A,B)**
- Piedmont Floodplain Soils (F19) **(LRR P, S, T)**
- Anomalous Bright Loamy Soils (F20) **(MLRA 153B)**
- Red Parent Material (TF2)
- Very Shallow Dark Surface (TF12)
- Other (Explain in Remarks)

³Indicators of hydrophytic vegetation and wetland hydrology must be present, unless disturbed or problematic.

Restrictive Layer (if observed):

Type: _____
 Depth (inches): _____

Hydric Soil Present? Yes _____ No _____

Remarks:

WETLAND DETERMINATION DATA FORM – Atlantic and Gulf Coastal Plain Region

Project/Site: _____ City/County: _____ Sampling Date: _____
 Applicant/Owner: _____ State: _____ Sampling Point: _____
 Investigator(s): _____ Section, Township, Range: _____
 Landform (hillslope, terrace, etc.): _____ Local relief (concave, convex, none): _____ Slope (%): _____
 Subregion (LRR or MLRA): _____ Lat: _____ Long: _____ Datum: _____
 Soil Map Unit Name: _____ NWI classification: _____

Are climatic / hydrologic conditions on the site typical for this time of year? Yes _____ No _____ (If no, explain in Remarks.)
 Are Vegetation _____, Soil _____, or Hydrology _____ significantly disturbed? Are "Normal Circumstances" present? Yes _____ No _____
 Are Vegetation _____, Soil _____, or Hydrology _____ naturally problematic? (If needed, explain any answers in Remarks.)

SUMMARY OF FINDINGS – Attach site map showing sampling point locations, transects, important features, etc.

Hydrophytic Vegetation Present? Yes _____ No _____ Hydric Soil Present? Yes _____ No _____ Wetland Hydrology Present? Yes _____ No _____	Is the Sampled Area within a Wetland? Yes _____ No _____
Remarks:	

HYDROLOGY

Wetland Hydrology Indicators: <u>Primary Indicators (minimum of one is required; check all that apply)</u> ___ Surface Water (A1) ___ Aquatic Fauna (B13) ___ High Water Table (A2) ___ Marl Deposits (B15) (LRR U) ___ Saturation (A3) ___ Hydrogen Sulfide Odor (C1) ___ Water Marks (B1) ___ Oxidized Rhizospheres along Living Roots (C3) ___ Sediment Deposits (B2) ___ Presence of Reduced Iron (C4) ___ Drift Deposits (B3) ___ Recent Iron Reduction in Tilled Soils (C6) ___ Algal Mat or Crust (B4) ___ Thin Muck Surface (C7) ___ Iron Deposits (B5) ___ Other (Explain in Remarks) ___ Inundation Visible on Aerial Imagery (B7) ___ Water-Stained Leaves (B9)	<u>Secondary Indicators (minimum of two required)</u> ___ Surface Soil Cracks (B6) ___ Sparsely Vegetated Concave Surface (B8) ___ Drainage Patterns (B10) ___ Moss Trim Lines (B16) ___ Dry-Season Water Table (C2) ___ Crayfish Burrows (C8) ___ Saturation Visible on Aerial Imagery (C9) ___ Geomorphic Position (D2) ___ Shallow Aquitard (D3) ___ FAC-Neutral Test (D5) ___ Sphagnum moss (D8) (LRR T, U)
Field Observations: Surface Water Present? Yes _____ No _____ Depth (inches): _____ Water Table Present? Yes _____ No _____ Depth (inches): _____ Saturation Present? Yes _____ No _____ Depth (inches): _____ (includes capillary fringe)	Wetland Hydrology Present? Yes _____ No _____
Describe Recorded Data (stream gauge, monitoring well, aerial photos, previous inspections), if available:	
Remarks:	

VEGETATION (Four Strata) – Use scientific names of plants.

Sampling Point: _____

	Absolute % Cover	Dominant Species?	Indicator Status		
Tree Stratum (Plot size: _____)					
1. _____	_____	_____	_____	Dominance Test worksheet: Number of Dominant Species That Are OBL, FACW, or FAC: _____ (A) Total Number of Dominant Species Across All Strata: _____ (B) Percent of Dominant Species That Are OBL, FACW, or FAC: _____ (A/B)	
2. _____	_____	_____	_____		
3. _____	_____	_____	_____		
4. _____	_____	_____	_____		
5. _____	_____	_____	_____		
6. _____	_____	_____	_____		
7. _____	_____	_____	_____		
8. _____	_____	_____	_____		
_____ = Total Cover				Prevalence Index worksheet: Total % Cover of: _____ Multiply by: _____ OBL species _____ x 1 = _____ FACW species _____ x 2 = _____ FAC species _____ x 3 = _____ FACU species _____ x 4 = _____ UPL species _____ x 5 = _____ Column Totals: _____ (A) _____ (B) Prevalence Index = B/A = _____	
50% of total cover: _____ 20% of total cover: _____					
Sapling/Shrub Stratum (Plot size: _____)					
1. _____	_____	_____	_____		
2. _____	_____	_____	_____		
3. _____	_____	_____	_____		
4. _____	_____	_____	_____		
5. _____	_____	_____	_____		
6. _____	_____	_____	_____		
7. _____	_____	_____	_____		
8. _____	_____	_____	_____		
_____ = Total Cover				Hydrophytic Vegetation Indicators: ___ 1 - Rapid Test for Hydrophytic Vegetation ___ 2 - Dominance Test is >50% ___ 3 - Prevalence Index is ≤3.0 ¹ ___ Problematic Hydrophytic Vegetation ¹ (Explain)	
50% of total cover: _____ 20% of total cover: _____					
Herb Stratum (Plot size: _____)					
1. _____	_____	_____	_____		
2. _____	_____	_____	_____		
3. _____	_____	_____	_____		
4. _____	_____	_____	_____		
5. _____	_____	_____	_____		
6. _____	_____	_____	_____		
7. _____	_____	_____	_____		
8. _____	_____	_____	_____		
9. _____	_____	_____	_____		
10. _____	_____	_____	_____		
11. _____	_____	_____	_____		
12. _____	_____	_____	_____		
_____ = Total Cover				Definitions of Four Vegetation Strata: Tree – Woody plants, excluding vines, 3 in. (7.6 cm) or more in diameter at breast height (DBH), regardless of height. Sapling/Shrub – Woody plants, excluding vines, less than 3 in. DBH and greater than 3.28 ft (1 m) tall. Herb – All herbaceous (non-woody) plants, regardless of size, and woody plants less than 3.28 ft tall. Woody vine – All woody vines greater than 3.28 ft in height.	
50% of total cover: _____ 20% of total cover: _____					
Woody Vine Stratum (Plot size: _____)					
1. _____	_____	_____	_____		
2. _____	_____	_____	_____		
3. _____	_____	_____	_____		
4. _____	_____	_____	_____		
5. _____	_____	_____	_____		
_____ = Total Cover				Hydrophytic Vegetation Present? Yes _____ No _____	
50% of total cover: _____ 20% of total cover: _____					
Remarks: (If observed, list morphological adaptations below).					

SOIL

Sampling Point: _____

Profile Description: (Describe to the depth needed to document the indicator or confirm the absence of indicators.)

Depth (inches)	Matrix		Redox Features				Texture	Remarks
	Color (moist)	%	Color (moist)	%	Type ¹	Loc ²		

¹Type: C=Concentration, D=Depletion, RM=Reduced Matrix, MS=Masked Sand Grains.

²Location: PL=Pore Lining, M=Matrix.

Hydric Soil Indicators: (Applicable to all LRRs, unless otherwise noted.)

- Histosol (A1)
- Histic Epipedon (A2)
- Black Histic (A3)
- Hydrogen Sulfide (A4)
- Stratified Layers (A5)
- Organic Bodies (A6) **(LRR P, T, U)**
- 5 cm Mucky Mineral (A7) **(LRR P, T, U)**
- Muck Presence (A8) **(LRR U)**
- 1 cm Muck (A9) **(LRR P, T)**
- Depleted Below Dark Surface (A11)
- Thick Dark Surface (A12)
- Coast Prairie Redox (A16) **(MLRA 150A)**
- Sandy Mucky Mineral (S1) **(LRR O, S)**
- Sandy Gleyed Matrix (S4)
- Sandy Redox (S5)
- Stripped Matrix (S6)
- Dark Surface (S7) **(LRR P, S, T, U)**

- Polyvalue Below Surface (S8) **(LRR S, T, U)**
- Thin Dark Surface (S9) **(LRR S, T, U)**
- Loamy Mucky Mineral (F1) **(LRR O)**
- Loamy Gleyed Matrix (F2)
- Depleted Matrix (F3)
- Redox Dark Surface (F6)
- Depleted Dark Surface (F7)
- Redox Depressions (F8)
- Marl (F10) **(LRR U)**
- Depleted Ochric (F11) **(MLRA 151)**
- Iron-Manganese Masses (F12) **(LRR O, P, T)**
- Umbric Surface (F13) **(LRR P, T, U)**
- Delta Ochric (F17) **(MLRA 151)**
- Reduced Vertic (F18) **(MLRA 150A, 150B)**
- Piedmont Floodplain Soils (F19) **(MLRA 149A)**
- Anomalous Bright Loamy Soils (F20) **(MLRA 149A, 153C, 153D)**

Indicators for Problematic Hydric Soils³:

- 1 cm Muck (A9) **(LRR O)**
- 2 cm Muck (A10) **(LRR S)**
- Reduced Vertic (F18) **(outside MLRA 150A,B)**
- Piedmont Floodplain Soils (F19) **(LRR P, S, T)**
- Anomalous Bright Loamy Soils (F20) **(MLRA 153B)**
- Red Parent Material (TF2)
- Very Shallow Dark Surface (TF12)
- Other (Explain in Remarks)

³Indicators of hydrophytic vegetation and wetland hydrology must be present, unless disturbed or problematic.

Restrictive Layer (if observed):

Type: _____
 Depth (inches): _____

Hydric Soil Present? Yes _____ No _____

Remarks:

WETLAND DETERMINATION DATA FORM – Atlantic and Gulf Coastal Plain Region

Project/Site: _____ City/County: _____ Sampling Date: _____
 Applicant/Owner: _____ State: _____ Sampling Point: _____
 Investigator(s): _____ Section, Township, Range: _____
 Landform (hillslope, terrace, etc.): _____ Local relief (concave, convex, none): _____ Slope (%): _____
 Subregion (LRR or MLRA): _____ Lat: _____ Long: _____ Datum: _____
 Soil Map Unit Name: _____ NWI classification: _____

Are climatic / hydrologic conditions on the site typical for this time of year? Yes _____ No _____ (If no, explain in Remarks.)
 Are Vegetation _____, Soil _____, or Hydrology _____ significantly disturbed? Are "Normal Circumstances" present? Yes _____ No _____
 Are Vegetation _____, Soil _____, or Hydrology _____ naturally problematic? (If needed, explain any answers in Remarks.)

SUMMARY OF FINDINGS – Attach site map showing sampling point locations, transects, important features, etc.

Hydrophytic Vegetation Present? Yes _____ No _____ Hydric Soil Present? Yes _____ No _____ Wetland Hydrology Present? Yes _____ No _____	Is the Sampled Area within a Wetland? Yes _____ No _____
Remarks:	

HYDROLOGY

Wetland Hydrology Indicators: <u>Primary Indicators (minimum of one is required; check all that apply)</u> ___ Surface Water (A1) ___ Aquatic Fauna (B13) ___ High Water Table (A2) ___ Marl Deposits (B15) (LRR U) ___ Saturation (A3) ___ Hydrogen Sulfide Odor (C1) ___ Water Marks (B1) ___ Oxidized Rhizospheres along Living Roots (C3) ___ Sediment Deposits (B2) ___ Presence of Reduced Iron (C4) ___ Drift Deposits (B3) ___ Recent Iron Reduction in Tilled Soils (C6) ___ Algal Mat or Crust (B4) ___ Thin Muck Surface (C7) ___ Iron Deposits (B5) ___ Other (Explain in Remarks) ___ Inundation Visible on Aerial Imagery (B7) ___ Water-Stained Leaves (B9)	<u>Secondary Indicators (minimum of two required)</u> ___ Surface Soil Cracks (B6) ___ Sparsely Vegetated Concave Surface (B8) ___ Drainage Patterns (B10) ___ Moss Trim Lines (B16) ___ Dry-Season Water Table (C2) ___ Crayfish Burrows (C8) ___ Saturation Visible on Aerial Imagery (C9) ___ Geomorphic Position (D2) ___ Shallow Aquitard (D3) ___ FAC-Neutral Test (D5) ___ Sphagnum moss (D8) (LRR T, U)
Field Observations: Surface Water Present? Yes _____ No _____ Depth (inches): _____ Water Table Present? Yes _____ No _____ Depth (inches): _____ Saturation Present? Yes _____ No _____ Depth (inches): _____ (includes capillary fringe)	Wetland Hydrology Present? Yes _____ No _____
Describe Recorded Data (stream gauge, monitoring well, aerial photos, previous inspections), if available:	
Remarks:	

VEGETATION (Four Strata) – Use scientific names of plants.

Sampling Point: _____

	Absolute % Cover	Dominant Species?	Indicator Status	
Tree Stratum (Plot size: _____)				
1. _____	_____	_____	_____	
2. _____	_____	_____	_____	
3. _____	_____	_____	_____	
4. _____	_____	_____	_____	
5. _____	_____	_____	_____	
6. _____	_____	_____	_____	
7. _____	_____	_____	_____	
8. _____	_____	_____	_____	
_____ = Total Cover				
50% of total cover: _____ 20% of total cover: _____				
Sapling/Shrub Stratum (Plot size: _____)				
1. _____	_____	_____	_____	
2. _____	_____	_____	_____	
3. _____	_____	_____	_____	
4. _____	_____	_____	_____	
5. _____	_____	_____	_____	
6. _____	_____	_____	_____	
7. _____	_____	_____	_____	
8. _____	_____	_____	_____	
_____ = Total Cover				
50% of total cover: _____ 20% of total cover: _____				
Herb Stratum (Plot size: _____)				
1. _____	_____	_____	_____	
2. _____	_____	_____	_____	
3. _____	_____	_____	_____	
4. _____	_____	_____	_____	
5. _____	_____	_____	_____	
6. _____	_____	_____	_____	
7. _____	_____	_____	_____	
8. _____	_____	_____	_____	
9. _____	_____	_____	_____	
10. _____	_____	_____	_____	
11. _____	_____	_____	_____	
12. _____	_____	_____	_____	
_____ = Total Cover				
50% of total cover: _____ 20% of total cover: _____				
Woody Vine Stratum (Plot size: _____)				
1. _____	_____	_____	_____	
2. _____	_____	_____	_____	
3. _____	_____	_____	_____	
4. _____	_____	_____	_____	
5. _____	_____	_____	_____	
_____ = Total Cover				
50% of total cover: _____ 20% of total cover: _____				
Dominance Test worksheet:				
Number of Dominant Species That Are OBL, FACW, or FAC: _____ (A)				
Total Number of Dominant Species Across All Strata: _____ (B)				
Percent of Dominant Species That Are OBL, FACW, or FAC: _____ (A/B)				
Prevalence Index worksheet:				
Total % Cover of:		Multiply by:		
OBL species	_____	x 1 =	_____	
FACW species	_____	x 2 =	_____	
FAC species	_____	x 3 =	_____	
FACU species	_____	x 4 =	_____	
UPL species	_____	x 5 =	_____	
Column Totals:	_____ (A)	_____ (B)		
Prevalence Index = B/A = _____				
Hydrophytic Vegetation Indicators:				
___ 1 - Rapid Test for Hydrophytic Vegetation				
___ 2 - Dominance Test is >50%				
___ 3 - Prevalence Index is ≤3.0 ¹				
___ Problematic Hydrophytic Vegetation ¹ (Explain)				
¹ Indicators of hydric soil and wetland hydrology must be present, unless disturbed or problematic.				
Definitions of Four Vegetation Strata:				
Tree – Woody plants, excluding vines, 3 in. (7.6 cm) or more in diameter at breast height (DBH), regardless of height.				
Sapling/Shrub – Woody plants, excluding vines, less than 3 in. DBH and greater than 3.28 ft (1 m) tall.				
Herb – All herbaceous (non-woody) plants, regardless of size, and woody plants less than 3.28 ft tall.				
Woody vine – All woody vines greater than 3.28 ft in height.				
Hydrophytic Vegetation Present? Yes _____ No _____				
Remarks: (If observed, list morphological adaptations below).				

SOIL

Sampling Point: _____

Profile Description: (Describe to the depth needed to document the indicator or confirm the absence of indicators.)

Depth (inches)	Matrix		Redox Features				Texture	Remarks
	Color (moist)	%	Color (moist)	%	Type ¹	Loc ²		

¹Type: C=Concentration, D=Depletion, RM=Reduced Matrix, MS=Masked Sand Grains.

²Location: PL=Pore Lining, M=Matrix.

Hydric Soil Indicators: (Applicable to all LRRs, unless otherwise noted.)

- Histosol (A1)
- Histic Epipedon (A2)
- Black Histic (A3)
- Hydrogen Sulfide (A4)
- Stratified Layers (A5)
- Organic Bodies (A6) **(LRR P, T, U)**
- 5 cm Mucky Mineral (A7) **(LRR P, T, U)**
- Muck Presence (A8) **(LRR U)**
- 1 cm Muck (A9) **(LRR P, T)**
- Depleted Below Dark Surface (A11)
- Thick Dark Surface (A12)
- Coast Prairie Redox (A16) **(MLRA 150A)**
- Sandy Mucky Mineral (S1) **(LRR O, S)**
- Sandy Gleyed Matrix (S4)
- Sandy Redox (S5)
- Stripped Matrix (S6)
- Dark Surface (S7) **(LRR P, S, T, U)**

- Polyvalue Below Surface (S8) **(LRR S, T, U)**
- Thin Dark Surface (S9) **(LRR S, T, U)**
- Loamy Mucky Mineral (F1) **(LRR O)**
- Loamy Gleyed Matrix (F2)
- Depleted Matrix (F3)
- Redox Dark Surface (F6)
- Depleted Dark Surface (F7)
- Redox Depressions (F8)
- Marl (F10) **(LRR U)**
- Depleted Ochric (F11) **(MLRA 151)**
- Iron-Manganese Masses (F12) **(LRR O, P, T)**
- Umbric Surface (F13) **(LRR P, T, U)**
- Delta Ochric (F17) **(MLRA 151)**
- Reduced Vertic (F18) **(MLRA 150A, 150B)**
- Piedmont Floodplain Soils (F19) **(MLRA 149A)**
- Anomalous Bright Loamy Soils (F20) **(MLRA 149A, 153C, 153D)**

Indicators for Problematic Hydric Soils³:

- 1 cm Muck (A9) **(LRR O)**
- 2 cm Muck (A10) **(LRR S)**
- Reduced Vertic (F18) **(outside MLRA 150A,B)**
- Piedmont Floodplain Soils (F19) **(LRR P, S, T)**
- Anomalous Bright Loamy Soils (F20) **(MLRA 153B)**
- Red Parent Material (TF2)
- Very Shallow Dark Surface (TF12)
- Other (Explain in Remarks)

³Indicators of hydrophytic vegetation and wetland hydrology must be present, unless disturbed or problematic.

Restrictive Layer (if observed):

Type: _____

Depth (inches): _____

Hydric Soil Present? Yes _____ No _____

Remarks:

WETLAND DETERMINATION DATA FORM – Atlantic and Gulf Coastal Plain Region

Project/Site: _____ City/County: _____ Sampling Date: _____
 Applicant/Owner: _____ State: _____ Sampling Point: _____
 Investigator(s): _____ Section, Township, Range: _____
 Landform (hillslope, terrace, etc.): _____ Local relief (concave, convex, none): _____ Slope (%): _____
 Subregion (LRR or MLRA): _____ Lat: _____ Long: _____ Datum: _____
 Soil Map Unit Name: _____ NWI classification: _____

Are climatic / hydrologic conditions on the site typical for this time of year? Yes _____ No _____ (If no, explain in Remarks.)
 Are Vegetation _____, Soil _____, or Hydrology _____ significantly disturbed? Are "Normal Circumstances" present? Yes _____ No _____
 Are Vegetation _____, Soil _____, or Hydrology _____ naturally problematic? (If needed, explain any answers in Remarks.)

SUMMARY OF FINDINGS – Attach site map showing sampling point locations, transects, important features, etc.

Hydrophytic Vegetation Present? Yes _____ No _____ Hydric Soil Present? Yes _____ No _____ Wetland Hydrology Present? Yes _____ No _____	Is the Sampled Area within a Wetland? Yes _____ No _____
Remarks:	

HYDROLOGY

Wetland Hydrology Indicators: <u>Primary Indicators (minimum of one is required; check all that apply)</u> ___ Surface Water (A1) ___ Aquatic Fauna (B13) ___ High Water Table (A2) ___ Marl Deposits (B15) (LRR U) ___ Saturation (A3) ___ Hydrogen Sulfide Odor (C1) ___ Water Marks (B1) ___ Oxidized Rhizospheres along Living Roots (C3) ___ Sediment Deposits (B2) ___ Presence of Reduced Iron (C4) ___ Drift Deposits (B3) ___ Recent Iron Reduction in Tilled Soils (C6) ___ Algal Mat or Crust (B4) ___ Thin Muck Surface (C7) ___ Iron Deposits (B5) ___ Other (Explain in Remarks) ___ Inundation Visible on Aerial Imagery (B7) ___ Water-Stained Leaves (B9)	<u>Secondary Indicators (minimum of two required)</u> ___ Surface Soil Cracks (B6) ___ Sparsely Vegetated Concave Surface (B8) ___ Drainage Patterns (B10) ___ Moss Trim Lines (B16) ___ Dry-Season Water Table (C2) ___ Crayfish Burrows (C8) ___ Saturation Visible on Aerial Imagery (C9) ___ Geomorphic Position (D2) ___ Shallow Aquitard (D3) ___ FAC-Neutral Test (D5) ___ Sphagnum moss (D8) (LRR T, U)
Field Observations: Surface Water Present? Yes _____ No _____ Depth (inches): _____ Water Table Present? Yes _____ No _____ Depth (inches): _____ Saturation Present? Yes _____ No _____ Depth (inches): _____ (includes capillary fringe)	Wetland Hydrology Present? Yes _____ No _____
Describe Recorded Data (stream gauge, monitoring well, aerial photos, previous inspections), if available:	
Remarks:	

VEGETATION (Four Strata) – Use scientific names of plants.

Sampling Point: _____

	Absolute % Cover	Dominant Species?	Indicator Status	
Tree Stratum (Plot size: _____)				
1. _____	_____	_____	_____	
2. _____	_____	_____	_____	
3. _____	_____	_____	_____	
4. _____	_____	_____	_____	
5. _____	_____	_____	_____	
6. _____	_____	_____	_____	
7. _____	_____	_____	_____	
8. _____	_____	_____	_____	
_____ = Total Cover				
50% of total cover: _____ 20% of total cover: _____				
Sapling/Shrub Stratum (Plot size: _____)				
1. _____	_____	_____	_____	
2. _____	_____	_____	_____	
3. _____	_____	_____	_____	
4. _____	_____	_____	_____	
5. _____	_____	_____	_____	
6. _____	_____	_____	_____	
7. _____	_____	_____	_____	
8. _____	_____	_____	_____	
_____ = Total Cover				
50% of total cover: _____ 20% of total cover: _____				
Herb Stratum (Plot size: _____)				
1. _____	_____	_____	_____	
2. _____	_____	_____	_____	
3. _____	_____	_____	_____	
4. _____	_____	_____	_____	
5. _____	_____	_____	_____	
6. _____	_____	_____	_____	
7. _____	_____	_____	_____	
8. _____	_____	_____	_____	
9. _____	_____	_____	_____	
10. _____	_____	_____	_____	
11. _____	_____	_____	_____	
12. _____	_____	_____	_____	
_____ = Total Cover				
50% of total cover: _____ 20% of total cover: _____				
Woody Vine Stratum (Plot size: _____)				
1. _____	_____	_____	_____	
2. _____	_____	_____	_____	
3. _____	_____	_____	_____	
4. _____	_____	_____	_____	
5. _____	_____	_____	_____	
_____ = Total Cover				
50% of total cover: _____ 20% of total cover: _____				
Dominance Test worksheet:				
Number of Dominant Species That Are OBL, FACW, or FAC: _____ (A)				
Total Number of Dominant Species Across All Strata: _____ (B)				
Percent of Dominant Species That Are OBL, FACW, or FAC: _____ (A/B)				
Prevalence Index worksheet:				
Total % Cover of:		Multiply by:		
OBL species	_____	x 1 =	_____	
FACW species	_____	x 2 =	_____	
FAC species	_____	x 3 =	_____	
FACU species	_____	x 4 =	_____	
UPL species	_____	x 5 =	_____	
Column Totals:	_____ (A)	_____ (B)		
Prevalence Index = B/A = _____				
Hydrophytic Vegetation Indicators:				
___ 1 - Rapid Test for Hydrophytic Vegetation				
___ 2 - Dominance Test is >50%				
___ 3 - Prevalence Index is ≤3.0 ¹				
___ Problematic Hydrophytic Vegetation ¹ (Explain)				
¹ Indicators of hydric soil and wetland hydrology must be present, unless disturbed or problematic.				
Definitions of Four Vegetation Strata:				
Tree – Woody plants, excluding vines, 3 in. (7.6 cm) or more in diameter at breast height (DBH), regardless of height.				
Sapling/Shrub – Woody plants, excluding vines, less than 3 in. DBH and greater than 3.28 ft (1 m) tall.				
Herb – All herbaceous (non-woody) plants, regardless of size, and woody plants less than 3.28 ft tall.				
Woody vine – All woody vines greater than 3.28 ft in height.				
Hydrophytic Vegetation Present? Yes _____ No _____				
Remarks: (If observed, list morphological adaptations below).				

SOIL

Sampling Point: _____

Profile Description: (Describe to the depth needed to document the indicator or confirm the absence of indicators.)

Depth (inches)	Matrix		Redox Features				Texture	Remarks
	Color (moist)	%	Color (moist)	%	Type ¹	Loc ²		

¹Type: C=Concentration, D=Depletion, RM=Reduced Matrix, MS=Masked Sand Grains. ²Location: PL=Pore Lining, M=Matrix.

Hydric Soil Indicators: (Applicable to all LRRs, unless otherwise noted.)	Indicators for Problematic Hydric Soils ³ :
<input type="checkbox"/> Histosol (A1) <input type="checkbox"/> Histic Epipedon (A2) <input type="checkbox"/> Black Histic (A3) <input type="checkbox"/> Hydrogen Sulfide (A4) <input type="checkbox"/> Stratified Layers (A5) <input type="checkbox"/> Organic Bodies (A6) (LRR P, T, U) <input type="checkbox"/> 5 cm Mucky Mineral (A7) (LRR P, T, U) <input type="checkbox"/> Muck Presence (A8) (LRR U) <input type="checkbox"/> 1 cm Muck (A9) (LRR P, T) <input type="checkbox"/> Depleted Below Dark Surface (A11) <input type="checkbox"/> Thick Dark Surface (A12) <input type="checkbox"/> Coast Prairie Redox (A16) (MLRA 150A) <input type="checkbox"/> Sandy Mucky Mineral (S1) (LRR O, S) <input type="checkbox"/> Sandy Gleyed Matrix (S4) <input type="checkbox"/> Sandy Redox (S5) <input type="checkbox"/> Stripped Matrix (S6) <input type="checkbox"/> Dark Surface (S7) (LRR P, S, T, U)	<input type="checkbox"/> Polyvalue Below Surface (S8) (LRR S, T, U) <input type="checkbox"/> Thin Dark Surface (S9) (LRR S, T, U) <input type="checkbox"/> Loamy Mucky Mineral (F1) (LRR O) <input type="checkbox"/> Loamy Gleyed Matrix (F2) <input type="checkbox"/> Depleted Matrix (F3) <input type="checkbox"/> Redox Dark Surface (F6) <input type="checkbox"/> Depleted Dark Surface (F7) <input type="checkbox"/> Redox Depressions (F8) <input type="checkbox"/> Marl (F10) (LRR U) <input type="checkbox"/> Depleted Ochric (F11) (MLRA 151) <input type="checkbox"/> Iron-Manganese Masses (F12) (LRR O, P, T) <input type="checkbox"/> Umbric Surface (F13) (LRR P, T, U) <input type="checkbox"/> Delta Ochric (F17) (MLRA 151) <input type="checkbox"/> Reduced Vertic (F18) (MLRA 150A, 150B) <input type="checkbox"/> Piedmont Floodplain Soils (F19) (MLRA 149A) <input type="checkbox"/> Anomalous Bright Loamy Soils (F20) (MLRA 149A, 153C, 153D)
	<input type="checkbox"/> 1 cm Muck (A9) (LRR O) <input type="checkbox"/> 2 cm Muck (A10) (LRR S) <input type="checkbox"/> Reduced Vertic (F18) (outside MLRA 150A,B) <input type="checkbox"/> Piedmont Floodplain Soils (F19) (LRR P, S, T) <input type="checkbox"/> Anomalous Bright Loamy Soils (F20) (MLRA 153B) <input type="checkbox"/> Red Parent Material (TF2) <input type="checkbox"/> Very Shallow Dark Surface (TF12) <input type="checkbox"/> Other (Explain in Remarks)

Restrictive Layer (if observed):
 Type: _____
 Depth (inches): _____

Hydric Soil Present? Yes _____ No _____

Remarks:

WETLAND DETERMINATION DATA FORM – Atlantic and Gulf Coastal Plain Region

Project/Site: _____ City/County: _____ Sampling Date: _____
 Applicant/Owner: _____ State: _____ Sampling Point: _____
 Investigator(s): _____ Section, Township, Range: _____
 Landform (hillslope, terrace, etc.): _____ Local relief (concave, convex, none): _____ Slope (%): _____
 Subregion (LRR or MLRA): _____ Lat: _____ Long: _____ Datum: _____
 Soil Map Unit Name: _____ NWI classification: _____

Are climatic / hydrologic conditions on the site typical for this time of year? Yes _____ No _____ (If no, explain in Remarks.)
 Are Vegetation _____, Soil _____, or Hydrology _____ significantly disturbed? Are "Normal Circumstances" present? Yes _____ No _____
 Are Vegetation _____, Soil _____, or Hydrology _____ naturally problematic? (If needed, explain any answers in Remarks.)

SUMMARY OF FINDINGS – Attach site map showing sampling point locations, transects, important features, etc.

Hydrophytic Vegetation Present? Yes _____ No _____ Hydric Soil Present? Yes _____ No _____ Wetland Hydrology Present? Yes _____ No _____	Is the Sampled Area within a Wetland? Yes _____ No _____
Remarks:	

HYDROLOGY

Wetland Hydrology Indicators: <u>Primary Indicators (minimum of one is required; check all that apply)</u> ___ Surface Water (A1) ___ Aquatic Fauna (B13) ___ High Water Table (A2) ___ Marl Deposits (B15) (LRR U) ___ Saturation (A3) ___ Hydrogen Sulfide Odor (C1) ___ Water Marks (B1) ___ Oxidized Rhizospheres along Living Roots (C3) ___ Sediment Deposits (B2) ___ Presence of Reduced Iron (C4) ___ Drift Deposits (B3) ___ Recent Iron Reduction in Tilled Soils (C6) ___ Algal Mat or Crust (B4) ___ Thin Muck Surface (C7) ___ Iron Deposits (B5) ___ Other (Explain in Remarks) ___ Inundation Visible on Aerial Imagery (B7) ___ Water-Stained Leaves (B9)	<u>Secondary Indicators (minimum of two required)</u> ___ Surface Soil Cracks (B6) ___ Sparsely Vegetated Concave Surface (B8) ___ Drainage Patterns (B10) ___ Moss Trim Lines (B16) ___ Dry-Season Water Table (C2) ___ Crayfish Burrows (C8) ___ Saturation Visible on Aerial Imagery (C9) ___ Geomorphic Position (D2) ___ Shallow Aquitard (D3) ___ FAC-Neutral Test (D5) ___ Sphagnum moss (D8) (LRR T, U)
Field Observations: Surface Water Present? Yes _____ No _____ Depth (inches): _____ Water Table Present? Yes _____ No _____ Depth (inches): _____ Saturation Present? Yes _____ No _____ Depth (inches): _____ (includes capillary fringe)	Wetland Hydrology Present? Yes _____ No _____
Describe Recorded Data (stream gauge, monitoring well, aerial photos, previous inspections), if available:	
Remarks:	

VEGETATION (Four Strata) – Use scientific names of plants.

Sampling Point: _____

	Absolute % Cover	Dominant Species?	Indicator Status	
Tree Stratum (Plot size: _____)				Dominance Test worksheet:
1. _____	_____	_____	_____	Number of Dominant Species That Are OBL, FACW, or FAC: _____ (A)
2. _____	_____	_____	_____	Total Number of Dominant Species Across All Strata: _____ (B)
3. _____	_____	_____	_____	Percent of Dominant Species That Are OBL, FACW, or FAC: _____ (A/B)
4. _____	_____	_____	_____	
5. _____	_____	_____	_____	
6. _____	_____	_____	_____	
7. _____	_____	_____	_____	
8. _____	_____	_____	_____	
	_____ = Total Cover			Prevalence Index worksheet:
50% of total cover: _____	20% of total cover: _____			Total % Cover of: _____ Multiply by: _____
				OBL species _____ x 1 = _____
				FACW species _____ x 2 = _____
				FAC species _____ x 3 = _____
				FACU species _____ x 4 = _____
				UPL species _____ x 5 = _____
				Column Totals: _____ (A) _____ (B)
				Prevalence Index = B/A = _____
Sapling/Shrub Stratum (Plot size: _____)				Hydrophytic Vegetation Indicators:
1. _____	_____	_____	_____	___ 1 - Rapid Test for Hydrophytic Vegetation
2. _____	_____	_____	_____	___ 2 - Dominance Test is >50%
3. _____	_____	_____	_____	___ 3 - Prevalence Index is ≤3.0 ¹
4. _____	_____	_____	_____	___ Problematic Hydrophytic Vegetation ¹ (Explain)
5. _____	_____	_____	_____	
6. _____	_____	_____	_____	
7. _____	_____	_____	_____	
8. _____	_____	_____	_____	
	_____ = Total Cover			¹ Indicators of hydric soil and wetland hydrology must be present, unless disturbed or problematic.
50% of total cover: _____	20% of total cover: _____			Definitions of Four Vegetation Strata:
				Tree – Woody plants, excluding vines, 3 in. (7.6 cm) or more in diameter at breast height (DBH), regardless of height.
				Sapling/Shrub – Woody plants, excluding vines, less than 3 in. DBH and greater than 3.28 ft (1 m) tall.
				Herb – All herbaceous (non-woody) plants, regardless of size, and woody plants less than 3.28 ft tall.
				Woody vine – All woody vines greater than 3.28 ft in height.
Herb Stratum (Plot size: _____)				
1. _____	_____	_____	_____	
2. _____	_____	_____	_____	
3. _____	_____	_____	_____	
4. _____	_____	_____	_____	
5. _____	_____	_____	_____	
6. _____	_____	_____	_____	
7. _____	_____	_____	_____	
8. _____	_____	_____	_____	
9. _____	_____	_____	_____	
10. _____	_____	_____	_____	
11. _____	_____	_____	_____	
12. _____	_____	_____	_____	
	_____ = Total Cover			
50% of total cover: _____	20% of total cover: _____			
Woody Vine Stratum (Plot size: _____)				
1. _____	_____	_____	_____	
2. _____	_____	_____	_____	
3. _____	_____	_____	_____	
4. _____	_____	_____	_____	
5. _____	_____	_____	_____	
	_____ = Total Cover			
50% of total cover: _____	20% of total cover: _____			
				Hydrophytic Vegetation Present? Yes _____ No _____
Remarks: (If observed, list morphological adaptations below).				

WETLAND DETERMINATION DATA FORM – Atlantic and Gulf Coastal Plain Region

Project/Site: _____ City/County: _____ Sampling Date: _____
 Applicant/Owner: _____ State: _____ Sampling Point: _____
 Investigator(s): _____ Section, Township, Range: _____
 Landform (hillslope, terrace, etc.): _____ Local relief (concave, convex, none): _____ Slope (%): _____
 Subregion (LRR or MLRA): _____ Lat: _____ Long: _____ Datum: _____
 Soil Map Unit Name: _____ NWI classification: _____

Are climatic / hydrologic conditions on the site typical for this time of year? Yes _____ No _____ (If no, explain in Remarks.)
 Are Vegetation _____, Soil _____, or Hydrology _____ significantly disturbed? Are "Normal Circumstances" present? Yes _____ No _____
 Are Vegetation _____, Soil _____, or Hydrology _____ naturally problematic? (If needed, explain any answers in Remarks.)

SUMMARY OF FINDINGS – Attach site map showing sampling point locations, transects, important features, etc.

Hydrophytic Vegetation Present? Yes _____ No _____ Hydric Soil Present? Yes _____ No _____ Wetland Hydrology Present? Yes _____ No _____	Is the Sampled Area within a Wetland? Yes _____ No _____
Remarks:	

HYDROLOGY

Wetland Hydrology Indicators: <u>Primary Indicators (minimum of one is required; check all that apply)</u> ___ Surface Water (A1) ___ Aquatic Fauna (B13) ___ High Water Table (A2) ___ Marl Deposits (B15) (LRR U) ___ Saturation (A3) ___ Hydrogen Sulfide Odor (C1) ___ Water Marks (B1) ___ Oxidized Rhizospheres along Living Roots (C3) ___ Sediment Deposits (B2) ___ Presence of Reduced Iron (C4) ___ Drift Deposits (B3) ___ Recent Iron Reduction in Tilled Soils (C6) ___ Algal Mat or Crust (B4) ___ Thin Muck Surface (C7) ___ Iron Deposits (B5) ___ Other (Explain in Remarks) ___ Inundation Visible on Aerial Imagery (B7) ___ Water-Stained Leaves (B9)	<u>Secondary Indicators (minimum of two required)</u> ___ Surface Soil Cracks (B6) ___ Sparsely Vegetated Concave Surface (B8) ___ Drainage Patterns (B10) ___ Moss Trim Lines (B16) ___ Dry-Season Water Table (C2) ___ Crayfish Burrows (C8) ___ Saturation Visible on Aerial Imagery (C9) ___ Geomorphic Position (D2) ___ Shallow Aquitard (D3) ___ FAC-Neutral Test (D5) ___ Sphagnum moss (D8) (LRR T, U)
Field Observations: Surface Water Present? Yes _____ No _____ Depth (inches): _____ Water Table Present? Yes _____ No _____ Depth (inches): _____ Saturation Present? Yes _____ No _____ Depth (inches): _____ (includes capillary fringe)	Wetland Hydrology Present? Yes _____ No _____
Describe Recorded Data (stream gauge, monitoring well, aerial photos, previous inspections), if available:	
Remarks:	

VEGETATION (Four Strata) – Use scientific names of plants.

Sampling Point: _____

	Absolute % Cover	Dominant Species?	Indicator Status	
Tree Stratum (Plot size: _____)				Dominance Test worksheet:
1. _____	_____	_____	_____	Number of Dominant Species That Are OBL, FACW, or FAC: _____ (A)
2. _____	_____	_____	_____	Total Number of Dominant Species Across All Strata: _____ (B)
3. _____	_____	_____	_____	Percent of Dominant Species That Are OBL, FACW, or FAC: _____ (A/B)
4. _____	_____	_____	_____	
5. _____	_____	_____	_____	
6. _____	_____	_____	_____	
7. _____	_____	_____	_____	
8. _____	_____	_____	_____	
	_____ = Total Cover			Prevalence Index worksheet:
50% of total cover: _____	20% of total cover: _____			_____ Total % Cover of: _____ Multiply by: _____
				OBL species _____ x 1 = _____
				FACW species _____ x 2 = _____
				FAC species _____ x 3 = _____
				FACU species _____ x 4 = _____
				UPL species _____ x 5 = _____
				Column Totals: _____ (A) _____ (B)
				Prevalence Index = B/A = _____
Sapling/Shrub Stratum (Plot size: _____)				Hydrophytic Vegetation Indicators:
1. _____	_____	_____	_____	___ 1 - Rapid Test for Hydrophytic Vegetation
2. _____	_____	_____	_____	___ 2 - Dominance Test is >50%
3. _____	_____	_____	_____	___ 3 - Prevalence Index is ≤3.0 ¹
4. _____	_____	_____	_____	___ Problematic Hydrophytic Vegetation ¹ (Explain)
5. _____	_____	_____	_____	
6. _____	_____	_____	_____	
7. _____	_____	_____	_____	
8. _____	_____	_____	_____	
	_____ = Total Cover			¹ Indicators of hydric soil and wetland hydrology must be present, unless disturbed or problematic.
50% of total cover: _____	20% of total cover: _____			Definitions of Four Vegetation Strata:
				Tree – Woody plants, excluding vines, 3 in. (7.6 cm) or more in diameter at breast height (DBH), regardless of height.
				Sapling/Shrub – Woody plants, excluding vines, less than 3 in. DBH and greater than 3.28 ft (1 m) tall.
				Herb – All herbaceous (non-woody) plants, regardless of size, and woody plants less than 3.28 ft tall.
				Woody vine – All woody vines greater than 3.28 ft in height.
Herb Stratum (Plot size: _____)				
1. _____	_____	_____	_____	
2. _____	_____	_____	_____	
3. _____	_____	_____	_____	
4. _____	_____	_____	_____	
5. _____	_____	_____	_____	
6. _____	_____	_____	_____	
7. _____	_____	_____	_____	
8. _____	_____	_____	_____	
9. _____	_____	_____	_____	
10. _____	_____	_____	_____	
11. _____	_____	_____	_____	
12. _____	_____	_____	_____	
	_____ = Total Cover			
50% of total cover: _____	20% of total cover: _____			
Woody Vine Stratum (Plot size: _____)				
1. _____	_____	_____	_____	
2. _____	_____	_____	_____	
3. _____	_____	_____	_____	
4. _____	_____	_____	_____	
5. _____	_____	_____	_____	
	_____ = Total Cover			
50% of total cover: _____	20% of total cover: _____			
Remarks: (If observed, list morphological adaptations below).				Hydrophytic Vegetation Present? Yes _____ No _____

SOIL

Sampling Point: _____

Profile Description: (Describe to the depth needed to document the indicator or confirm the absence of indicators.)

Depth (inches)	Matrix		Redox Features				Texture	Remarks
	Color (moist)	%	Color (moist)	%	Type ¹	Loc ²		

¹Type: C=Concentration, D=Depletion, RM=Reduced Matrix, MS=Masked Sand Grains.

²Location: PL=Pore Lining, M=Matrix.

Hydric Soil Indicators: (Applicable to all LRRs, unless otherwise noted.)

- Histosol (A1)
- Histic Epipedon (A2)
- Black Histic (A3)
- Hydrogen Sulfide (A4)
- Stratified Layers (A5)
- Organic Bodies (A6) **(LRR P, T, U)**
- 5 cm Mucky Mineral (A7) **(LRR P, T, U)**
- Muck Presence (A8) **(LRR U)**
- 1 cm Muck (A9) **(LRR P, T)**
- Depleted Below Dark Surface (A11)
- Thick Dark Surface (A12)
- Coast Prairie Redox (A16) **(MLRA 150A)**
- Sandy Mucky Mineral (S1) **(LRR O, S)**
- Sandy Gleyed Matrix (S4)
- Sandy Redox (S5)
- Stripped Matrix (S6)
- Dark Surface (S7) **(LRR P, S, T, U)**

- Polyvalue Below Surface (S8) **(LRR S, T, U)**
- Thin Dark Surface (S9) **(LRR S, T, U)**
- Loamy Mucky Mineral (F1) **(LRR O)**
- Loamy Gleyed Matrix (F2)
- Depleted Matrix (F3)
- Redox Dark Surface (F6)
- Depleted Dark Surface (F7)
- Redox Depressions (F8)
- Marl (F10) **(LRR U)**
- Depleted Ochric (F11) **(MLRA 151)**
- Iron-Manganese Masses (F12) **(LRR O, P, T)**
- Umbric Surface (F13) **(LRR P, T, U)**
- Delta Ochric (F17) **(MLRA 151)**
- Reduced Vertic (F18) **(MLRA 150A, 150B)**
- Piedmont Floodplain Soils (F19) **(MLRA 149A)**
- Anomalous Bright Loamy Soils (F20) **(MLRA 149A, 153C, 153D)**

Indicators for Problematic Hydric Soils³:

- 1 cm Muck (A9) **(LRR O)**
- 2 cm Muck (A10) **(LRR S)**
- Reduced Vertic (F18) **(outside MLRA 150A,B)**
- Piedmont Floodplain Soils (F19) **(LRR P, S, T)**
- Anomalous Bright Loamy Soils (F20) **(MLRA 153B)**
- Red Parent Material (TF2)
- Very Shallow Dark Surface (TF12)
- Other (Explain in Remarks)

³Indicators of hydrophytic vegetation and wetland hydrology must be present, unless disturbed or problematic.

Restrictive Layer (if observed):

Type: _____

Depth (inches): _____

Hydric Soil Present? Yes _____ No _____

Remarks:

WETLAND DETERMINATION DATA FORM – Atlantic and Gulf Coastal Plain Region

Project/Site: _____ City/County: _____ Sampling Date: _____
 Applicant/Owner: _____ State: _____ Sampling Point: _____
 Investigator(s): _____ Section, Township, Range: _____
 Landform (hillslope, terrace, etc.): _____ Local relief (concave, convex, none): _____ Slope (%): _____
 Subregion (LRR or MLRA): _____ Lat: _____ Long: _____ Datum: _____
 Soil Map Unit Name: _____ NWI classification: _____

Are climatic / hydrologic conditions on the site typical for this time of year? Yes _____ No _____ (If no, explain in Remarks.)
 Are Vegetation _____, Soil _____, or Hydrology _____ significantly disturbed? Are "Normal Circumstances" present? Yes _____ No _____
 Are Vegetation _____, Soil _____, or Hydrology _____ naturally problematic? (If needed, explain any answers in Remarks.)

SUMMARY OF FINDINGS – Attach site map showing sampling point locations, transects, important features, etc.

Hydrophytic Vegetation Present? Yes _____ No _____ Hydric Soil Present? Yes _____ No _____ Wetland Hydrology Present? Yes _____ No _____	Is the Sampled Area within a Wetland? Yes _____ No _____
Remarks:	

HYDROLOGY

Wetland Hydrology Indicators: <u>Primary Indicators (minimum of one is required; check all that apply)</u> ___ Surface Water (A1) ___ Aquatic Fauna (B13) ___ High Water Table (A2) ___ Marl Deposits (B15) (LRR U) ___ Saturation (A3) ___ Hydrogen Sulfide Odor (C1) ___ Water Marks (B1) ___ Oxidized Rhizospheres along Living Roots (C3) ___ Sediment Deposits (B2) ___ Presence of Reduced Iron (C4) ___ Drift Deposits (B3) ___ Recent Iron Reduction in Tilled Soils (C6) ___ Algal Mat or Crust (B4) ___ Thin Muck Surface (C7) ___ Iron Deposits (B5) ___ Other (Explain in Remarks) ___ Inundation Visible on Aerial Imagery (B7) ___ Water-Stained Leaves (B9)	<u>Secondary Indicators (minimum of two required)</u> ___ Surface Soil Cracks (B6) ___ Sparsely Vegetated Concave Surface (B8) ___ Drainage Patterns (B10) ___ Moss Trim Lines (B16) ___ Dry-Season Water Table (C2) ___ Crayfish Burrows (C8) ___ Saturation Visible on Aerial Imagery (C9) ___ Geomorphic Position (D2) ___ Shallow Aquitard (D3) ___ FAC-Neutral Test (D5) ___ Sphagnum moss (D8) (LRR T, U)
Field Observations: Surface Water Present? Yes _____ No _____ Depth (inches): _____ Water Table Present? Yes _____ No _____ Depth (inches): _____ Saturation Present? Yes _____ No _____ Depth (inches): _____ (includes capillary fringe)	Wetland Hydrology Present? Yes _____ No _____
Describe Recorded Data (stream gauge, monitoring well, aerial photos, previous inspections), if available:	
Remarks:	

VEGETATION (Four Strata) – Use scientific names of plants.

Sampling Point: _____

	Absolute % Cover	Dominant Species?	Indicator Status	
<u>Tree Stratum</u> (Plot size: _____)				
1.	_____	_____	_____	
2.	_____	_____	_____	
3.	_____	_____	_____	
4.	_____	_____	_____	
5.	_____	_____	_____	
6.	_____	_____	_____	
7.	_____	_____	_____	
8.	_____	_____	_____	
_____ = Total Cover				
50% of total cover: _____ 20% of total cover: _____				
<u>Sapling/Shrub Stratum</u> (Plot size: _____)				
1.	_____	_____	_____	
2.	_____	_____	_____	
3.	_____	_____	_____	
4.	_____	_____	_____	
5.	_____	_____	_____	
6.	_____	_____	_____	
7.	_____	_____	_____	
8.	_____	_____	_____	
_____ = Total Cover				
50% of total cover: _____ 20% of total cover: _____				
<u>Herb Stratum</u> (Plot size: _____)				
1.	_____	_____	_____	
2.	_____	_____	_____	
3.	_____	_____	_____	
4.	_____	_____	_____	
5.	_____	_____	_____	
6.	_____	_____	_____	
7.	_____	_____	_____	
8.	_____	_____	_____	
9.	_____	_____	_____	
10.	_____	_____	_____	
11.	_____	_____	_____	
12.	_____	_____	_____	
_____ = Total Cover				
50% of total cover: _____ 20% of total cover: _____				
<u>Woody Vine Stratum</u> (Plot size: _____)				
1.	_____	_____	_____	
2.	_____	_____	_____	
3.	_____	_____	_____	
4.	_____	_____	_____	
5.	_____	_____	_____	
_____ = Total Cover				
50% of total cover: _____ 20% of total cover: _____				
Dominance Test worksheet:				
Number of Dominant Species That Are OBL, FACW, or FAC: _____ (A)				
Total Number of Dominant Species Across All Strata: _____ (B)				
Percent of Dominant Species That Are OBL, FACW, or FAC: _____ (A/B)				
Prevalence Index worksheet:				
Total % Cover of:		Multiply by:		
OBL species	_____	x 1 =	_____	
FACW species	_____	x 2 =	_____	
FAC species	_____	x 3 =	_____	
FACU species	_____	x 4 =	_____	
UPL species	_____	x 5 =	_____	
Column Totals:	_____ (A)	_____ (B)		
Prevalence Index = B/A = _____				
Hydrophytic Vegetation Indicators:				
___ 1 - Rapid Test for Hydrophytic Vegetation				
___ 2 - Dominance Test is >50%				
___ 3 - Prevalence Index is ≤3.0 ¹				
___ Problematic Hydrophytic Vegetation ¹ (Explain)				
¹ Indicators of hydric soil and wetland hydrology must be present, unless disturbed or problematic.				
Definitions of Four Vegetation Strata:				
Tree – Woody plants, excluding vines, 3 in. (7.6 cm) or more in diameter at breast height (DBH), regardless of height.				
Sapling/Shrub – Woody plants, excluding vines, less than 3 in. DBH and greater than 3.28 ft (1 m) tall.				
Herb – All herbaceous (non-woody) plants, regardless of size, and woody plants less than 3.28 ft tall.				
Woody vine – All woody vines greater than 3.28 ft in height.				
Hydrophytic Vegetation Present? Yes _____ No _____				
Remarks: (If observed, list morphological adaptations below).				

SOIL

Sampling Point: _____

Profile Description: (Describe to the depth needed to document the indicator or confirm the absence of indicators.)

Depth (inches)	Matrix		Redox Features				Texture	Remarks
	Color (moist)	%	Color (moist)	%	Type ¹	Loc ²		

¹Type: C=Concentration, D=Depletion, RM=Reduced Matrix, MS=Masked Sand Grains. ²Location: PL=Pore Lining, M=Matrix.

Hydric Soil Indicators: (Applicable to all LRRs, unless otherwise noted.)	Indicators for Problematic Hydric Soils ³ :
<input type="checkbox"/> Histosol (A1) <input type="checkbox"/> Histic Epipedon (A2) <input type="checkbox"/> Black Histic (A3) <input type="checkbox"/> Hydrogen Sulfide (A4) <input type="checkbox"/> Stratified Layers (A5) <input type="checkbox"/> Organic Bodies (A6) (LRR P, T, U) <input type="checkbox"/> 5 cm Mucky Mineral (A7) (LRR P, T, U) <input type="checkbox"/> Muck Presence (A8) (LRR U) <input type="checkbox"/> 1 cm Muck (A9) (LRR P, T) <input type="checkbox"/> Depleted Below Dark Surface (A11) <input type="checkbox"/> Thick Dark Surface (A12) <input type="checkbox"/> Coast Prairie Redox (A16) (MLRA 150A) <input type="checkbox"/> Sandy Mucky Mineral (S1) (LRR O, S) <input type="checkbox"/> Sandy Gleyed Matrix (S4) <input type="checkbox"/> Sandy Redox (S5) <input type="checkbox"/> Stripped Matrix (S6) <input type="checkbox"/> Dark Surface (S7) (LRR P, S, T, U)	<input type="checkbox"/> Polyvalue Below Surface (S8) (LRR S, T, U) <input type="checkbox"/> Thin Dark Surface (S9) (LRR S, T, U) <input type="checkbox"/> Loamy Mucky Mineral (F1) (LRR O) <input type="checkbox"/> Loamy Gleyed Matrix (F2) <input type="checkbox"/> Depleted Matrix (F3) <input type="checkbox"/> Redox Dark Surface (F6) <input type="checkbox"/> Depleted Dark Surface (F7) <input type="checkbox"/> Redox Depressions (F8) <input type="checkbox"/> Marl (F10) (LRR U) <input type="checkbox"/> Depleted Ochric (F11) (MLRA 151) <input type="checkbox"/> Iron-Manganese Masses (F12) (LRR O, P, T) <input type="checkbox"/> Umbric Surface (F13) (LRR P, T, U) <input type="checkbox"/> Delta Ochric (F17) (MLRA 151) <input type="checkbox"/> Reduced Vertic (F18) (MLRA 150A, 150B) <input type="checkbox"/> Piedmont Floodplain Soils (F19) (MLRA 149A) <input type="checkbox"/> Anomalous Bright Loamy Soils (F20) (MLRA 149A, 153C, 153D)
	<input type="checkbox"/> 1 cm Muck (A9) (LRR O) <input type="checkbox"/> 2 cm Muck (A10) (LRR S) <input type="checkbox"/> Reduced Vertic (F18) (outside MLRA 150A,B) <input type="checkbox"/> Piedmont Floodplain Soils (F19) (LRR P, S, T) <input type="checkbox"/> Anomalous Bright Loamy Soils (F20) (MLRA 153B) <input type="checkbox"/> Red Parent Material (TF2) <input type="checkbox"/> Very Shallow Dark Surface (TF12) <input type="checkbox"/> Other (Explain in Remarks)

Restrictive Layer (if observed):
 Type: _____
 Depth (inches): _____

Hydric Soil Present? Yes _____ No _____

Remarks:

Precipitation Data

**NRCS method - Rainfall Documentation Worksheet Hydrology Tools for Wetland Determination
NRCS Engineering Field Handbook Chapter 19**

Date	11/6/2018	Landowner/Project	LanzaTech
Weather Station	Mount Vernon	State	Georgia
County	Treutlen	Growing Season	Yes
Photo/obs Date	7/18/2018	Soil Name	

shaded cells are locked or calculated	Long-term rainfall statistics (from WETS table or State Climatology Office)							
	Month	30% chance <	30% chance >	Precip	Condition Dry, Wet, Normal	Condition Value	Month Weight Value	Product of Previous 2 Columns
1st Prior Month*	June	2.62	5.01	4.50	N	2	3	6
2nd Prior Month*	May	1.22	2.99	6.05	W	3	2	6
3rd Prior Month*	April	1.87	3.69	3.30	N	2	1	2
	Sum							14

*compared to photo/observation date

Note: If sum is	
6 - 9	prior period has been drier than normal
10 - 14	prior period has been normal
15 - 18	prior period has been wetter than normal

Condition value:
Dry =1
Normal =2
Wet =3

Conclusions: prior period has been normal

**NRCS method - Rainfall Documentation Worksheet Hydrology Tools for Wetland Determination
NRCS Engineering Field Handbook Chapter 19**

Date	11/6/2018	Landowner/Project	LanzaTech
Weather Station	Dublin 2	State	Georgia
County	Treutlen	Growing Season	Yes
Photo/obs Date	9/3/2018	Soil Name	

shaded cells are locked or calculated	Long-term rainfall statistics (from WETS table or State Climatology Office)							
	Month	30% chance <	30% chance >	Precip	Condition Dry, Wet, Normal	Condition Value	Month Weight Value	Product of Previous 2 Columns
1st Prior Month*	August	1.88	5.10		D	1	3	3
2nd Prior Month*	July	1.98	4.04	10.30	W	3	2	6
3rd Prior Month*	June	2.62	5.01	4.50	N	2	1	2
	Sum							11

*compared to photo/observation date

Note: If sum is	
6 - 9	prior period has been drier than normal
10 - 14	prior period has been normal
15 - 18	prior period has been wetter than normal

Condition value:
Dry =1
Normal =2
Wet =3

Conclusions: prior period has been normal



Responsive partner.
Exceptional outcomes.