

**RECEIVED**

By Docket Room at 2:08 pm, Apr 01, 2021



Cheniere Energy, Inc.  
700 Milam Street, Suite 1900  
Houston, Texas 77002  
phone: 713.375.5000  
fax: 713.375.6000

April 1, 2021

Submitted Via DOE's Online Portal

U. S. Department of Energy  
Office of Fossil Energy - Natural Gas Regulatory Activities  
P.O. Box 44375  
Washington, DC 20026-4375

Re: Sabine Pass Liquefaction, LLC  
DOE Semi-Annual Report for Period of September 1, 2020, through February 28, 2021  
FE Docket Nos. / Orders:  
10-85-LNG / 2833  
10-111-LNG / 2961\*  
13-30-LNG, 13-42-LNG, and 13-121-LNG /3306\*, 3307\*, 3384\* & 3669\*  
14-92-LNG / 3595  
15-63-LNG / 3792  
19-125-LNG / 4520

Pursuant to the above-referenced Orders, Sabine Pass Liquefaction, LLC ("Sabine Pass"), herein submits its semi-annual report for September 1, 2020, through February 28, 2021. This report includes information on the construction progress of the Sabine Pass Liquefaction facility, and the status of the long-term contracts associated with the long-term export of LNG and any long-term gas supply contracts.

- Included as **Attachment A** are the Monthly Reports for construction activities which were submitted to Federal Energy Regulatory Commission under Docket Number CP13-552-000 during the reporting period.
- Sabine Pass entered the following long-term contract(s) during the period from September 1, 2020, through February 28, 2021:
  - On December 20, 2020, Cheniere Marketing International LLP entered into an agreement with NFE North Trading Limited for the long-term sale and export of liquefied natural gas from the Sabine Pass LNG Terminal.
- Sabine Pass entered the following long-term gas supply contract(s) during the period from September 1, 2020 – February 28, 2021:
  - NAESB Base Contract for Sale and Purchase of Natural Gas and a Transaction Confirmation entered into by Sabine Pass on June 5, 2014 and January 5, 2021 (respectively) with Macquarie Energy LLC for an annual contract quantity approximating 18,250,000 MMBtu.
  - NAESB Base Contract for Sale and Purchase of Natural Gas and a Transaction Confirmation entered into by Sabine Pass on November 18, 2014 and January 5, 2021 (respectively) with NextEra Energy Marketing LLC for an annual contract quantity approximating 18,250,000 MMBtu.

- NAESB Base Contract for Sale and Purchase of Natural Gas (“Base Contract”) and a Transaction Confirmation (“Confirmation”) entered into by Sabine Pass on April 14, 2016 and October 28, 2020 (respectively) with Wells Fargo Commodities, LLC for an annual contract quantity approximating 11,000,000 MMBtu.

From September 1, 2020 to February 28, 2021, the following items were submitted to DOE:

- Notice of a change in counterparties to previously submitted long-term contracts associated with the long-term supply of natural gas to the Sabine Pass Liquefaction Project in Sabine Pass, Louisiana. Effective December 1, 2020 Montage Resources Corporation merged with and into Southwestern Energy Company (“SWN”). SWN assigned the NAESB Base Contract for Sale and Purchase of Natural Gas dated December 20, 2017 and Transaction Confirmation dated May 24, 2017 between Montage Resources Corporation and Sabine Pass Liquefaction, LLC to SWN subsidiary, SWN Energy Services Co. LLC.

Should you have any questions about the instant filing, please feel free to contact the undersigned at (713) 375-5000.

Respectfully,



Karri Mahmoud  
Sabine Pass Liquefaction, LLC

Sabine Pass Liquefaction, LLC  
DOE Semi-Annual Report for Period September 1, 2020, through February 28, 2021

**ATTACHMENT A**

Sabine Pass Liquefaction Project  
Cameron Parish, Louisiana

Monthly Progress Report  
September 2020

## Table of Contents

1.	Executive Summary .....	1
2.	Project Highlights .....	1
3.	Environmental, Safety, and Health Progress .....	1
4.	Schedule .....	1
5.	Construction and Start up .....	2
6.	Permitting and Environmental .....	3
7.	Progress Pictures .....	4

## 1. Executive Summary

This report covers activities for the month of September 2020.

Bechtel continues to progress the project and is now at 70.9% complete against the plan of 69.2%. Currently, Engineering is 97.8% complete, Procurement is 98.2% complete, Subcontracts is 48.0% complete, and Construction is 34.6% complete.

## 2. Project Highlights

During the month of September, construction completed the lube oil trench alongside the Compressor area, the steel structure in the Fuel Gas Facilities and the Substation cable tray rack. Aboveground pipe installation is now underway in all areas of the Train 6 facility. Construction also set equipment in nine (9) areas, including the setting of the Lean Solvent Charge, Lean Solvent Booster and Hot Oil Pumps, the Fuel Gas and Startup Fuel Gas Heaters, the Stabilizer Condenser and the Turbine Water Tank.

## 3. Environmental, Safety, and Health Progress

During the reporting month, the following ES&H events occurred:

	Near Miss		First Aid		Recordable		Lost Time	
	Month	ITD	Month	ITD	Month	ITD	Month	ITD
Bechtel	0	2779	5	3874	0	113	0	15
Subcontractor	0	124	1	242	0	9	0	1
Total	0	2903	6	4116	0	122	0	16

## 4. Schedule

Bechtel continues to progress the project and is now at 70.9% complete against the plan of 69.2%. Currently, Engineering is 97.8% complete, Procurement is 98.2% complete, Subcontracts is 48.0% complete, and Construction is 34.6% complete.

## 5. Construction and Start up

Activities by Area		
Area	Activities in September	Planned Work for October
<b>Train 6</b>	<ul style="list-style-type: none"> <li>• Completed hurricane preparedness activities in anticipation of Hurricane Laura, assessed post-hurricane damages, and completed site remedial works</li> <li>• Completed foundation works for the leave-out between the Compressor area and the Compressor Substation area</li> <li>• Completed concrete works at the Lube Oil trench alongside the Compressor area</li> <li>• Completed concrete foundation works for the Scavenger Metering Pump Skid at the OSBL Waste Water and Solvent Storage area</li> <li>• Completed area paving at the Fuel Gas Facilities area</li> <li>• Completed structural steel erection in the Fuel Gas Facilities area and the cable tray rack between the Compressor and Compressor Substation areas</li> <li>• Commenced installation of aboveground pipe at the H2S Removal area</li> <li>• Set the Turbine Water Tank in the Compressor area</li> <li>• Set the Lean Solvent Charge Pumps in the Amine Storage and Thermal Oxidizer area</li> <li>• Set the Feed Gas Filter Coalescer, the Compressor the Amine Sump Pump, the Regenerator Reflux Pumps and the Lean Solvent Booster Pumps in the Amine Regeneration and Acid Gas Removal areas</li> <li>• Set two (2) Fin Fans in the Cryo Rack area</li> <li>• Set the Hot Oil Trim Coolers in the AGRU area</li> <li>• Set the Turbine IAH Water Tank, the Compressor Turbine Fuel Gas Filter, and the Pentane, Fuel Gas and Start-up Fuel Gas Electrical Heaters in the Fuel Gas Facilities area</li> <li>• Set the Hot Oil Pumps in the Hot Oil area</li> <li>• Set the Stabilizer Condenser in the Condensate Stabilization area</li> <li>• Commenced low voltage and instrument cable pulls in the Compressor area and the Cryo rack</li> <li>• Complete cable tray installations in the Amine Regeneration and Acid Gas Removal area and the H2S Removal area</li> </ul>	<ul style="list-style-type: none"> <li>• Recommence concrete works at the LNG Spill Trench alongside the Propane Condenser Rack</li> <li>• Commence foundation works in the Propane Condenser Rack leave-out after delivery of Cold Boxes</li> <li>• Complete all remaining concrete works in the OSBL areas</li> <li>• Commence upper floor steel placement in the Compressor area</li> <li>• Set the Scavenger Metering Pump in the Waste Water and Solvent Storage area of the OSBL</li> <li>• Set the Air Compressor package equipment in the Instrument and Plan Air area of the OSBL</li> <li>• Set the Thermal Oxidizer Knockout Drum Pumps in the Amine Storage and Thermal Oxidizer area</li> <li>• Set the last six (6) Fin Fans in the Cryo Rack area</li> <li>• Set the Methane and Ethylene Cold Boxes in the Cold Boxes areas</li> <li>• Set the HRC Reflux Condenser in the Ethyne Cold Box area</li> <li>• Set the Ethylene Surge Drum in the Propane Stabilization area</li> <li>• Set the Debutanizer Relux Pumps and the HRC Heavies Reflux Pumps in the Heavies Removal area</li> <li>• Complete energization of the Compressor and Propane Substations</li> <li>• Turnover first two (2) systems to Startup</li> </ul>

## 6. Permitting and Environmental

### Summary of Problems, Non-Compliances, and Corrective Actions

Date	Description
None.	

### Agency Contacts/Inspections

Agency	Name	Date	Location/Activity
None.			



## 7. Progress Pictures



Progress at Train 6 facing North



Progress at Train 6 facing Northeast



Progress on Filter House Steel at Compressor area



Thermal Oxidizer Area

Sabine Pass Liquefaction, LLC and Sabine Pass LNG, L.P.  
September 2020 Monthly Progress Report



Progress at Propane Refrigeration Area



In-place Equipment Insulation

Sabine Pass Liquefaction Project  
Cameron Parish, Louisiana

Monthly Progress Report  
October 2020

## Table of Contents

1.	Executive Summary .....	1
2.	Project Highlights .....	1
3.	Environmental, Safety, and Health Progress .....	1
4.	Schedule .....	1
5.	Construction and Start up .....	2
6.	Permitting and Environmental .....	2
7.	Progress Pictures .....	3

## 1. Executive Summary

This report covers activities for the month of October 2020.

Bechtel continues to progress the project and is now at 73.5% complete against the plan of 72.0%. Currently, Engineering is 98.6% complete, Procurement is 99.6% complete, Subcontracts is 50.1% complete, and Construction is 39.4% complete.

## 2. Project Highlights

During the month of October, construction recommenced the LNG spill trench alongside the Propane Rack and completed steel erection in the Condensate Stabilization and Thermal Oxidizer areas. Aboveground pipe installation continues in all areas of the Train 6 facility. Construction also set various pieces of equipment, including the Ethylene Surge Drum, the HRC Reflux Condenser, Debutanizer Reflux Pumps, Condensate Cooler and the remaining fin fans in the Cryo Rack. Construction installed the preassembled upper floor stature and commence lube oil flushes in the Compressor area. Energization of the Compressor and Propane substation were successfully completed this month.

## 3. Environmental, Safety, and Health Progress

During the reporting month, the following ES&H events occurred:

	Near Miss		First Aid		Recordable		Lost Time	
	Month	ITD	Month	ITD	Month	ITD	Month	ITD
Bechtel	6	2785	11	3885	0	113	0	15
Subcontractor	1	125	0	242	0	9	0	1
Total	7	2910	11	4127	0	122	0	16

## 4. Schedule

Bechtel continues to progress the project and is now at 73.5% complete against the plan of 72.0%. Currently, Engineering is 98.6% complete, Procurement is 99.6% complete, Subcontracts is 50.1% complete, and Construction is 39.4% complete.

## 5. Construction and Start up

Activities by Area		
Area	Activities in October	Planned Work for November
<b>Train 6</b>	<ul style="list-style-type: none"> <li>• Recommended concrete works at the LNG Spill Trench alongside the Propane Condenser Rack</li> <li>• Completed preassembled upper floor steel placement in the Compressor area</li> <li>• Completed structural steel erection in the Condensate Stabilization and Thermal Oxidizer areas</li> <li>• Commenced lube oil flushing in the Compressor area</li> <li>• Set the Scavenger Metering Pump in the Waste Water and Solvent Storage area of the OSBL</li> <li>• Set the Air Compressor package equipment in the Instrument and Plant Air area of the OSBL</li> <li>• Set the last six (6) Fin Fans in the Cryo Rack area</li> <li>• Set the Ethylene Surge Drum in the Propane Stabilization area</li> <li>• Set the HRC Reflux Condenser in the Ethylene Cold Box area</li> <li>• Set the Debutanizer Reflux Pumps and the HRC Heavies Reflux Pumps in the Heavies Removal area</li> <li>• Set the Condensate Cooler, Stabilizer Reflux Pumps and the Pentanes Charge Pumps in the Condensate Stabilization area</li> <li>• Commenced power cable installations in Amine Storage and Thermal Oxidizer, Amine Regen and Acid Gas Removal, and H2S Removal areas</li> <li>• Completed cable tray installation in the OSBL Bog Compressor area</li> <li>• Completed the power cable installations in the OSBL Waste Water and Solvent Storage area</li> <li>• Completed energization of the Compressor and Propane Substations</li> <li>• Turned over first two (2) systems to Startup</li> </ul>	<ul style="list-style-type: none"> <li>• Commence foundation works in the Propane Condenser Rack leave-out after delivery of Cold Boxes</li> <li>• Commence foundation works in the Methane Cold Box and Ethylene Cold Box leave-out areas</li> <li>• Complete all remaining concrete works in the OSBL areas</li> <li>• Commence structural steel erection in the Propane Condenser Rack leave-out area</li> <li>• Commence structural steel erection in the Ethylene Cold Box leave-out area</li> <li>• Set the Methane and Ethylene Cold Boxes in the Cold Box areas</li> <li>• Set the Ethylene Purger Condenser and Absorber Sections in the Propane Refrigeration area</li> <li>• Set the Hot Oil Sump Pump in the Hot Oil area</li> <li>• Set the Ethylene and Propane De-Inventory Pumps in the Ethylene Cold Box and Propane Refrigeration areas</li> <li>• Set the Turbine IAH Water Circulation Pumps in the Fuel Gas Facilities area</li> <li>• Set the Air Compressor in the OSBL Instrument and Plant Air area</li> <li>• Commence installation of Pipe in the OSBL Waste Water and Solvent Storage area</li> </ul>

## 6. Permitting and Environmental

### Summary of Problems, Non-Compliances, and Corrective Actions

Date	Description
None.	

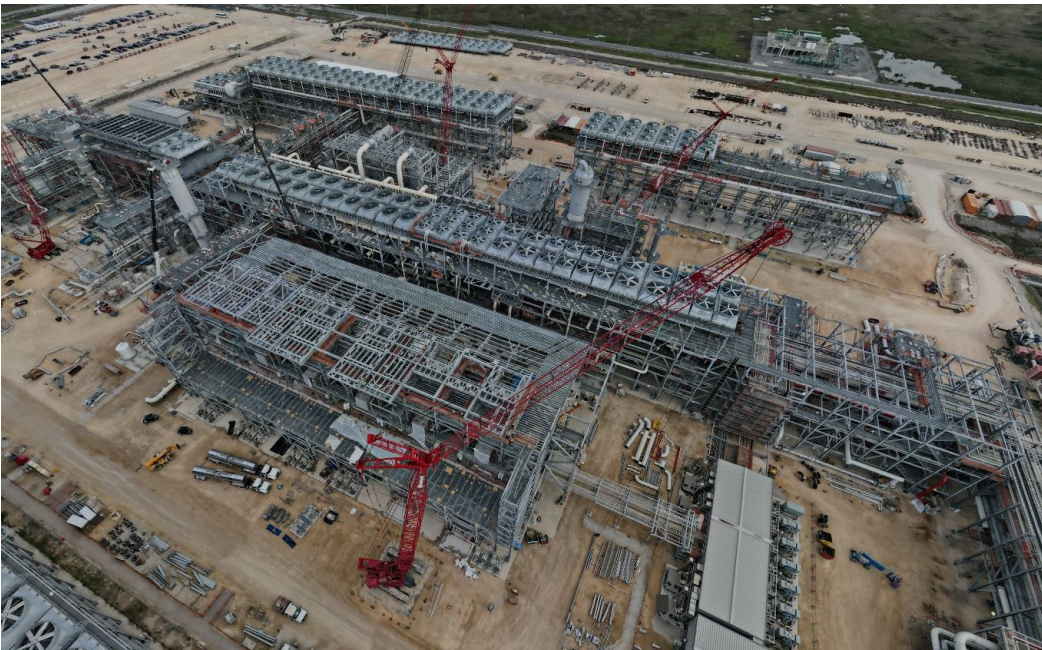
### Agency Contacts/Inspections

Agency	Name	Date	Location/Activity
None.			

## 7. Progress Pictures



Progress at Train 6 facing North



Progress at Train 6 facing Northeast



Sabine Pass Liquefaction, LLC and Sabine Pass LNG, L.P.  
October 2020 Monthly Progress Report



Upper Floor Steel Placement at Compressor Area



Pipe Installation prior to setting of Methane Cold Box



Progress at Propane Refrigeration Area



Steel Erection in advance of setting Ethylene Cold Box

Sabine Pass Liquefaction Project  
Cameron Parish, Louisiana

Monthly Progress Report  
November 2020

## Table of Contents

1.	Executive Summary .....	1
2.	Project Highlights .....	1
3.	Environmental, Safety, and Health Progress .....	1
4.	Schedule .....	1
5.	Construction and Start up .....	2
6.	Permitting and Environmental .....	2
7.	Progress Pictures .....	3

## 1. Executive Summary

This report covers activities for the month of November 2020.

Bechtel continues to progress the project and is now at 75.6% complete against the plan of 74.3%. Currently, Engineering is 98.8% complete, Procurement is 99.8% complete, Subcontracts is 53.9% complete, and Construction is 44.1% complete.

## 2. Project Highlights

During the month of November, construction completed the LNG spill trench on the north side of the leave-out at the Propane Rack, and completed all concrete associated with leave-outs with subsequent steel erection activities now in progress. Aboveground pipe installation continues in all areas of the Train 6 facility. Construction also set various pieces of equipment, including four filter houses, both Cold Boxes, the Hot Oil Sump Pump and commenced pre-assembly of the Waste Heat Recovery Units. Construction also commenced on the installation of the air sub-headers in two areas.

## 3. Environmental, Safety, and Health Progress

During the reporting month, the following ES&H events occurred:

	Near Miss		First Aid		Recordable		Lost Time	
	Month	ITD	Month	ITD	Month	ITD	Month	ITD
Bechtel	2	2787	11	3896	0	113	0	15
Subcontractor	1	126	3	245	0	9	0	1
Total	3	2913	14	4141	0	122	0	16

## 4. Schedule

Bechtel continues to progress the project and is now at 75.6% complete against the plan of 74.3%. Currently, Engineering is 98.8% complete, Procurement is 99.8% complete, Subcontracts is 53.9% complete, and Construction is 44.1% complete.

## 5. Construction and Start up

Activities by Area		
Area	Activities in November	Planned Work for December
<b>Train 6</b>	<ul style="list-style-type: none"> <li>• Completed foundation works in the Propane Condenser Rack leave-out after delivery of Cold Boxes</li> <li>• Completed concrete piers in the Methane Cold Box and Ethylene Cold Box leave-out areas</li> <li>• Completed concrete works at the LNG Spill Trench north of the leave-out at the Propane Condenser Rack</li> <li>• Commenced structural steel erection in the Propane Condenser Rack leave-out area</li> <li>• Completed structural steel erection in the Dehydration and Mercury Removal area</li> <li>• Set four (4) filter houses in the Compressor area</li> <li>• Set the Methane and Ethylene Cold Boxes in the Cold Box areas</li> <li>• Set the Ethylene Purger Condenser and Absorber Sections in the Propane Refrigeration area</li> <li>• Set the Hot Oil Sump Pump in the Hot Oil area</li> <li>• Set the Ethylene and Propane De-Inventory Pumps in the Ethylene Cold Box and Propane Refrigeration areas</li> <li>• Set the Turbine IAH Water Circulation Pumps in the Fuel Gas Facilities area</li> <li>• Commenced pre-assembly of the Waste Heat Recovery Units in the laydown yard</li> <li>• Set the Air Compressor in the OSBL Instrument and Plant Air area</li> <li>• Complete installation of Pipe in the OSBL Waste Water and Solvent Storage area and two OSBL Piperacks</li> <li>• Successfully completed the first aboveground pipe hydrotest</li> <li>• Commenced air sub-header pipe installations in the Fuel Gas Facilities area and the Amine Regeneration and Acid Gas Removal area</li> </ul>	<ul style="list-style-type: none"> <li>• Progress concrete works at the LNG Spill Trench south of the leave-out at the Propane Condenser Rack</li> <li>• Complete all remaining concrete works in the OSBL areas</li> <li>• Complete structural steel erection in the Propane Condenser Rack leave-out area</li> <li>• Complete structural steel erection in the Methane Cold Box and Ethylene Cold Box leave-out areas</li> <li>• Set the last of the filter houses in the Compressor area</li> <li>• Set the Waste Heat Recovery Units and the GT Exhaust Stacks in the Compressor area</li> <li>• Set the Boil Off Gas Compressor in the OSBL BOG Compressor area</li> <li>• Set the RO / EDI Package in the OSBL Water Treatment Facility</li> <li>• Complete installation of Pipe in the OSBL Piperack</li> </ul>

## 6. Permitting and Environmental

### Summary of Problems, Non-Compliances, and Corrective Actions

Date	Description
None.	

### Agency Contacts/Inspections

Agency	Name	Date	Location/Activity
None.			

## 7. Progress Pictures



Progress at Train 6 facing North



Progress at Train 6 facing Northeast

Sabine Pass Liquefaction Project  
Cameron Parish, Louisiana

Monthly Progress Report  
December 2020



## Table of Contents

1.	Executive Summary .....	1
2.	Project Highlights .....	1
3.	Environmental, Safety, and Health Progress .....	1
4.	Schedule .....	1
5.	Construction and Start up .....	2
6.	Permitting and Environmental .....	2
7.	Progress Pictures .....	3

## 1. Executive Summary

This report covers activities for the month of December 2020.

Bechtel continues to progress the project and is now at 77.6% complete against the plan of 76.2%. Currently, Engineering is 99.0% complete, Procurement is 99.9% complete, Subcontracts is 54.9% complete, and Construction is 49.2% complete.

## 2. Project Highlights

During the month of December, construction completed all concrete activities in the OSBL areas, and completed all leave-out steel erection activities. Aboveground pipe installation continues in all areas of the Train 6 facility. Construction also completed setting the GT Stacks and the Waste Heat Recovery Units as well as the RO/EDI Package in the Water Treatment Facility.

## 3. Environmental, Safety, and Health Progress

During the reporting month, the following ES&H events occurred:

	Near Miss		First Aid		Recordable		Lost Time	
	Month	ITD	Month	ITD	Month	ITD	Month	ITD
Bechtel	4	2791	7	3903	1	114	0	15
Subcontractor	0	126	0	245	0	9	0	1
Total	4	2917	7	4148	1	123	0	16

## 4. Schedule

Bechtel continues to progress the project and is now at 77.6% complete against the plan of 76.2%. Currently, Engineering is 99.0% complete, Procurement is 99.9% complete, Subcontracts is 54.9% complete, and Construction is 49.2% complete.

## 5. Construction and Start up

Activities by Area		
Area	Activities in December	Planned Work for January
<b>Train 6</b>	<ul style="list-style-type: none"> <li>• Completed structural steel erection in the Methane Cold Box and Ethylene Cold Box leave-out areas</li> <li>• Completed structural steel erection in the Propane Condenser Rack leave-out area</li> <li>• Commenced installation of pipe in the Propane Condenser Rack leave-out area</li> <li>• Set the last of the filter houses in the Compressor area</li> <li>• Set the Waste Heat Recovery Units and the GT Exhaust Stacks in the Compressor area</li> <li>• Set the RO / EDI Package and reinstalled the roof at the OSBL Water Treatment Facility</li> <li>• Completed installation of Pipe in the OSBL Piperack</li> </ul>	<ul style="list-style-type: none"> <li>• Complete concrete works at the LNG Spill Trench south of the leave-out at the Propane Condenser Rack</li> <li>• Complete installation of Bridge Cranes in the Compressor area</li> <li>• Set the last of the fins fans in the Propane Condenser Rack area</li> <li>• Commence loop checks</li> <li>• Set the Boil Off Gas Compressor in the OSBL BOG Compressor area</li> <li>• Commence installation of Pipe in the OSBL Instrument / Plant Air area and OSBL Water Treatment Facility</li> </ul>

## 6. Permitting and Environmental

### Summary of Problems, Non-Compliances, and Corrective Actions

Date	Description
None.	

### Agency Contacts/Inspections

Agency	Name	Date	Location/Activity
None.			

## 7. Progress Pictures



Progress at Train 6 facing North



Progress at Train 6 facing Northeast

Sabine Pass Liquefaction Project  
Cameron Parish, Louisiana

Monthly Progress Report  
January 2021

## Table of Contents

1.	Executive Summary .....	1
2.	Project Highlights .....	1
3.	Environmental, Safety, and Health Progress .....	1
4.	Schedule .....	1
5.	Construction and Start up .....	2
6.	Permitting and Environmental .....	2
7.	Progress Pictures .....	3

## 1. Executive Summary

This report covers activities for the month of January 2021.

Bechtel continues to progress the project and is now at 79.4% complete against the plan of 78.0%. Currently, Engineering is 99.2% complete, Procurement is 99.9% complete, Subcontracts is 59.7% complete, and Construction is 52.8% complete.

## 2. Project Highlights

During the month of January, construction progressed concrete and paving activities at the LNG Spill trench and commenced scaffolding at the cold boxes to enable inspections to commence. Above ground pipe installation continues in all areas of the Train 6 facility. Construction also completed the last of the heavy lift equipment setting with the bridge cranes and the last of the fin fans.

## 3. Environmental, Safety, and Health Progress

During the reporting month, the following ES&H events occurred:

	Near Miss		First Aid		Recordable		Lost Time	
	Month	ITD	Month	ITD	Month	ITD	Month	ITD
Bechtel	8	2799	9	3912	0	114	0	15
Subcontractor	1	127	0	245	0	9	0	1
Total	9	2926	9	4157	0	123	0	16

## 4. Schedule

Bechtel continues to progress the project and is now at 79.4% complete against the plan of 78.0%. Currently, Engineering is 99.2% complete, Procurement is 99.9% complete, Subcontracts is 59.7% complete, and Construction is 52.8% complete.

## 5. Construction and Start up

Activities by Area		
Area	Activities in January	Planned Work for February
<b>Train 6</b>	<ul style="list-style-type: none"> <li>• Completed concrete works at all but one section of the LNG Spill Trench south of the leave-out at the Propane Condenser Rack</li> <li>• Completed installation of Bridge Cranes in the Compressor area</li> <li>• Set the last of the fin fans in the Propane Condenser Rack area</li> <li>• Commenced loop checks</li> <li>• Commenced scaffolding inside the Cold Boxes to allow commencement of inspections</li> <li>• Set the Boil Off Gas Compressor in the OSBL BOG Compressor area</li> <li>• Commenced installation of Pipe in the OSBL Instrument / Plant Air area and OSBL Water Treatment Facility</li> </ul>	<ul style="list-style-type: none"> <li>• Complete concrete works at the final section of the LNG Spill Trench at the Propane Condenser Rack</li> <li>• Complete bolt up and impacting of WHRU steel at the Compressor area</li> <li>• Commence inspections inside the Cold Boxes</li> <li>• Complete grouting of all Pumps</li> <li>• Complete cable tray installations in the Propane Condenser rack</li> <li>• Complete installation of Pipe in the OSBL Instrument / Plant Air area and commence in the OSBL BOG Compressor area</li> <li>• Turnover the first pipe system to Startup</li> </ul>

## 6. Permitting and Environmental

### Summary of Problems, Non-Compliances, and Corrective Actions

Date	Description
December 9, 2020	FERC identified an area of concern for adequate sediment controls in Laydown 14 during virtual construction inspection. SPLNG installed haybales on going away side of all rock check dams at Laydown 14.
December 9, 2020	FERC observed sediment-laden water at Outfall 004 during virtual construction inspection. SPLNG provided subsequent correspondence and photographs following the next rain event. See Attachment A for photos following rain event which shows no sediment laden water at Outfall 004.

### Agency Contacts/Inspections

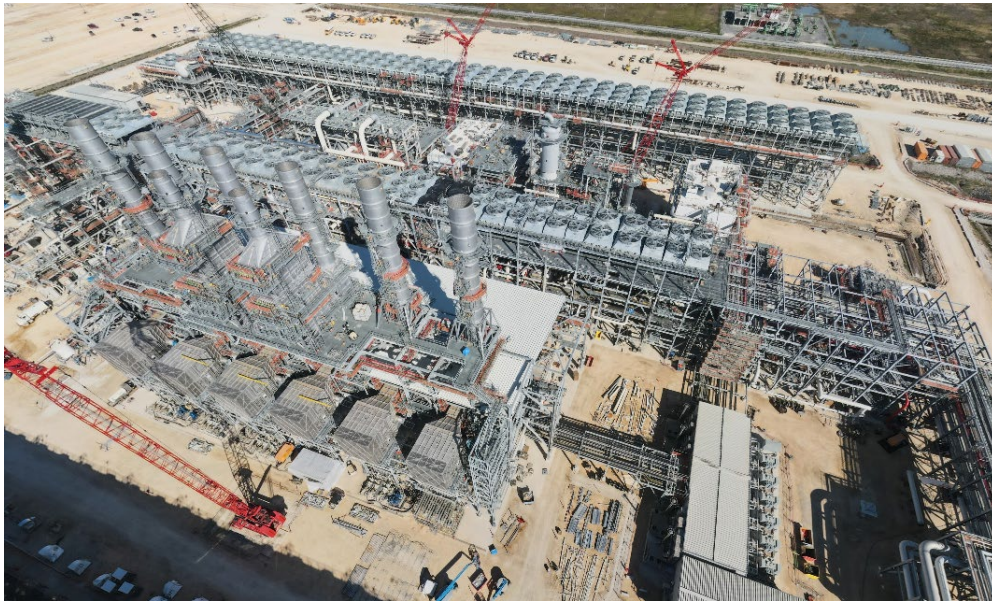
Agency	Name	Date	Location/Activity
None.			



## 7. Progress Pictures



Progress at Train 6 facing North



Progress at Train 6 facing Northeast

Sabine Pass Liquefaction, LLC and Sabine Pass LNG, L.P.  
January 2021 Monthly Progress Report



Installation of additional sediment controls (hay bales) in Laydown 14



Observation at Outfall 004 during virtual construction inspection



Observation of Outfall 004 following virtual construction inspection

Sabine Pass Liquefaction Project  
Cameron Parish, Louisiana

Monthly Progress Report  
February 2021

## Table of Contents

1.	Executive Summary .....	1
2.	Project Highlights .....	1
3.	Environmental, Safety, and Health Progress .....	1
4.	Schedule .....	1
5.	Construction and Start up .....	2
6.	Permitting and Environmental .....	2
7.	Progress Pictures .....	3

## 1. Executive Summary

This report covers activities for the month of February 2021.

Bechtel continues to progress the project and is now at 80.8% complete against the plan of 79.9%. Currently, Engineering is 99.5% complete, Procurement is 99.9% complete, Subcontracts is 61.3% complete, and Construction is 56.3% complete.

## 2. Project Highlights

During the month of February, construction progressed concrete and paving activities at the LNG Spill trench and commenced scaffolding and inspections at the cold boxes. Above ground pipe installation continues in all areas of the Train 6 facility. Construction continues installing air cooler motors in the piperacks and is progressing lube oil flushes and testing at the compressors in preparation for motor runs.

## 3. Environmental, Safety, and Health Progress

During the reporting month, the following ES&H events occurred:

	Near Miss		First Aid		Recordable		Lost Time	
	Month	ITD	Month	ITD	Month	ITD	Month	ITD
Bechtel	3	2802	8	3920	1	115	0	15
Subcontractor	0	127	1	246	0	9	0	1
Total	3	2929	9	4166	0	124	0	16

## 4. Schedule

Bechtel continues to progress the project and is now at 80.8% complete against the plan of 79.9%. Currently, Engineering is 99.5% complete, Procurement is 99.9% complete, Subcontracts is 61.3% complete, and Construction is 56.3% complete.

## 5. Construction and Start up

Activities by Area		
Area	Activities in February	Planned Work for March
<b>Train 6</b>	<ul style="list-style-type: none"> <li>• Completed bolt up and impacting of WHRU steel at the compressor area</li> <li>• Commenced inspections inside the cold boxes</li> <li>• Completed grouting of all pumps</li> <li>• Completed cable tray installations in the propane condenser rack</li> <li>• Completed installation of pipe in the OSBL instrument/plant air area and commenced in the OSBL BOG compressor area</li> <li>• Turned over the first five (5) pipe systems and five (5) instrumentation systems to Startup</li> <li>• Completed cleaning and installed filters at the filter house in the 615-11 ethylene compressor</li> <li>• Commenced LNG trench concrete works at the south side of the Train</li> </ul>	<ul style="list-style-type: none"> <li>• Commence megger tests of the compressors at the compressor area</li> <li>• Complete inspections inside the cold boxes</li> <li>• Complete above ground pipe installations in the AGRU piperack area, H2S Removal area and the OSBL interconnecting piperack</li> <li>• Complete plant air Distribution system test</li> <li>• Turnover five (5) systems to Startup</li> <li>• Commence cleaning and install filters in the 615-21 ethylene and 614-21 propane compressors</li> <li>• Complete lube oil flushing at the OSBL BOG compressor area</li> </ul>

## 6. Permitting and Environmental

### Summary of Problems, Non-Compliances, and Corrective Actions

Date	Description
None.	

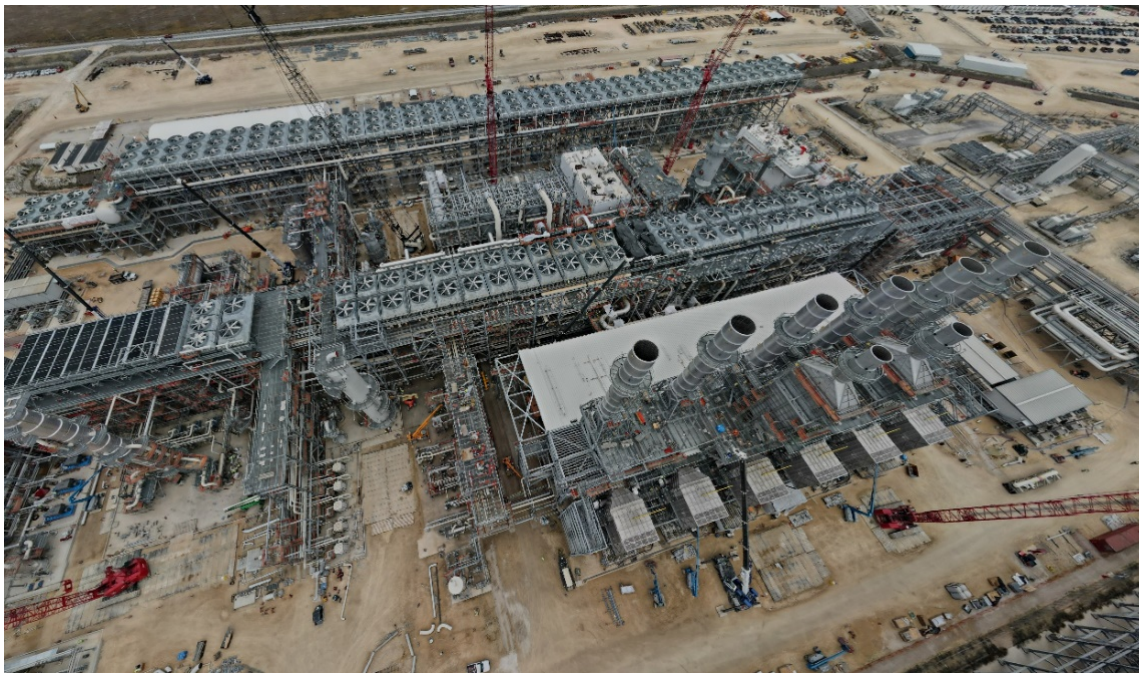
### Agency Contacts/Inspections

Agency	Name	Date	Location/Activity
None.			

## 7. Progress Pictures



Progress at Train 6 facing South



Progress at Train 6 facing East





Earthen berm with rock check dams and hay bales at Laydown 14



Gabion baskets installed in Outfall 004 drainage at Laydown 18



Rock check dams installed around storm water drainage in Laydown 18