



Cheniere Energy, Inc.
700 Milam Street, Suite 1900
Houston, Texas 77002
phone: 713.375.5000
fax: 713.375.6000

RECEIVED
By Docket Room at 1:46 pm, Sep 29, 2020

September 29, 2020

Submitted Via DOE's Online Portal

U. S. Department of Energy
Office of Fossil Energy - Natural Gas Regulatory Activities
P.O. Box 44375
Washington, DC 20026-4375

Re: Sabine Pass Liquefaction, LLC
DOE Semi-Annual Report for Period of March 1, 2020, through August 31, 2020
FE Docket No / Order:
10-85-LNG / 2833
10-111-LNG / 2961*
13-30-LNG, 13-42-LNG, and 13-121-LNG /3306*, 3307*, 3384* & 3669*
14-92-LNG / 3595
15-63-LNG / 3792

Pursuant to the above-referenced Orders, Sabine Pass Liquefaction, LLC ("Sabine Pass"), must file with the U.S. Department of Energy - Office of Natural Gas Regulatory Activities ("DOE"), on a semi-annual basis, written reports describing the progress of the Sabine Pass Liquefaction Project. These reports shall include information on the progress of the Sabine Pass Liquefaction facility, and the status of the long-term contracts associated with the long-term export of LNG and any long-term supply contracts.

- Please refer to **Attachment A** for the Monthly Construction Reports which detail the construction activities associated with the Stage 3 Project, which were submitted to Federal Energy Regulatory Commission under FERC Docket Number CP13-552-000 during the reporting period.
- No new long-term export contract(s) were executed during the period from March 1, 2020, through August 31, 2020.
- No new long-term gas supply contract(s) were executed during the period from March 1, 2020, through August 31, 2020.

Should you have any questions about the instant filing, please feel free to contact the undersigned at (713) 375-5000.

Respectfully,

Karri Mahmoud
Sabine Pass Liquefaction, LLC

Sabine Pass Liquefaction, LLC
DOE Semi-Annual Report for Period March 1, 2020, through August 31, 2020

ATTACHMENT A

Sabine Pass Liquefaction Project
Cameron Parish, Louisiana

Monthly Progress Report
March 2020

Table of Contents

1.	Executive Summary	1
2.	Project Highlights	1
3.	Environmental, Safety, and Health Progress	1
4.	Schedule	1
5.	Construction and Start up	2
6.	Permitting and Environmental	3
7.	Progress Pictures	4

1. Executive Summary

This report covers activities for the month of March 2020.

Bechtel continues to progress the project and is now at 53.9% complete against the plan of 51.1%. Currently, Engineering is 93.8% complete, Procurement is 78.4% complete, Subcontracts is 39.5%, and Construction is 15.0% complete.

2. Project Highlights

During the month of March, Construction completed HVAC foundations at the Propane Substation area and pedestals in the Acid Gas Removal Area. Area paving was completed at the North Side of Mercury Removal and Dehydration Area. Erection of structural steel completed in the AGRU Piperack and the OSBL Piperack and commenced in the Thermal Oxidizer Area. Hockey-stick pipe erection continued in the Compressor area, with aboveground pipe now progressing in nine separate areas. The project is preparing to commence the heavy lift plan in April.

3. Environmental, Safety, and Health Progress

During the reporting month, the following ES&H events occurred:

	Near Miss		First Aid		Recordable		Lost Time	
	Month	ITD	Month	ITD	Month	ITD	Month	ITD
Bechtel	3	2771	10	3823	0	113	0	15
Subcontractor	0	123	1	240	0	9	0	1
Total	3	2894	11	4063	0	122	0	16

4. Schedule

Bechtel continues to progress the project and is now at 53.9% complete against the plan of 51.1%. Currently, Engineering is 93.8% complete, Procurement is 78.4% complete, Subcontracts is 39.5%, and Construction is 15.0% complete.

5. Construction and Start up

Activities by Area		
Area	Activities in March	Planned Work for April
Train 6	<ul style="list-style-type: none"> • Completed concrete foundations for HVAC equipment at the Propane Substation Area and Amine Regeneration and Acid Gas Removal Areas • Commenced concrete pads in Propane section of Compressor area • Completed concrete pedestals at Acid Gas Removal Area and south side of Mercury Removal and Dehydration Area, and commenced at Thermal Oxidizer Area • Completed area paving at north side of Mercury Removal and Dehydration Area • Completed erection of structural steel in north leave-out of Cryo Piperack, AGRU Piperack and leave out section of OSBL Piperack, and commenced erection of structural steel in East Wall of Compressor Area and Condensate Stabilization • Commenced installation of aboveground pipe for upper elevations of Cryo Piperack Area and Amine Storage and Thermal Oxidizer Area • Completed testing of all hockey-stick pipe for Compressor Area and commenced installations • Completed installation of sole plates for compressors in Ethylene and Methane sections of Compressor Area • Set Debutanizer, LS Propane HRC Reflux Chiller, Heavies Removal Column Reboiler, and HRC Heavies Reflux Drum in Heavies Removal Unit • Set Regeneration Gas KO Drum in Mercury Removal and Dehydration Area • Set Amine Sump Drum in the Amine Regeneration and Acid Gas Removal Area • Commenced assembly of the TC12000 Heavy Lift Crane • Commenced cable tray installation in Compressor Substation Area • Complete HVAC and duct installation in Compressor and Propane Substation Areas 	<ul style="list-style-type: none"> • Complete concrete foundations at Amine Regeneration and Acid Gas Removal Area, transformer foundations at the Propane Substation Area, and commence concrete foundations in the Thermal Oxidizer Area • Complete concrete pads in Propane section of Compressor area • Complete concrete pedestals at the Methane Cold Box Area • Complete area paving at Methane Cold Box, Hot Oil and south side of Mercury Removal and Dehydration Area • Complete erection of structural steel in the Heavies Removal Unit, Utility Piperack, East Wall of Compressor Area, and the Propane Condenser Rack, except for leave-outs. Commence erection of structural steel in Methane Cold Box Area and the south leave out of the Cryo Rack Area • Complete installation of hockey-stick pipe in the Compressor Area • Commence installation of sole plates for compressors in Propane section of Compressor Area • Install the transformers in the Propane Substation Area • Set the Propane Refrigerant Accumulator in the Propane Rack • Set the Thermal Oxidizer KO Drum in the Thermal Oxidizer Area • Set the Hot Oil Surge Drum in the Hot Oil Surge Drum Area • Set two Lean / Rich Solvent Heat Exchangers in the Amine Regeneration and Acid Gas Removal Area • Set Molecular Sieve Dehydrators, Mercury Removal Bed, Propane Feed Chiller and Dryer Feed KO Drum in Mercury Removal and Dehydration Area • Set Hot Oil Sump Drum • Complete cable tray installation in Compressor Substation Area and OSBL Piperack R10, and commence in the Propane Substation Area

6. Permitting and Environmental

Summary of Problems, Non-Compliances, and Corrective Actions

Date	Description
None.	

Agency Contacts/Inspections

Agency	Name	Date	Location/Activity
None.			

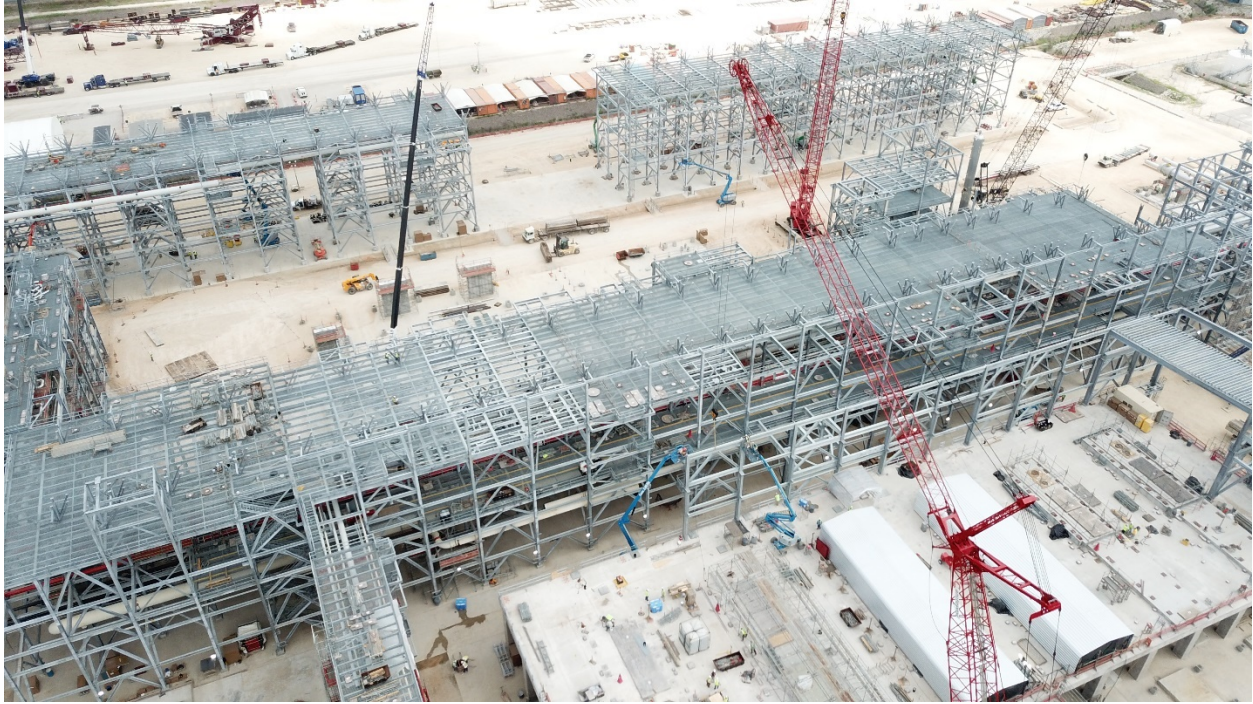
7. Progress Pictures



Progress at northeast side of Train 6



Steel and pipe progress at south end of Train 6



Steel and pipe progress in Train 6



Utility Piperack with Amine Surge Tank in the background



Debutanizer

Sabine Pass Liquefaction Project
Cameron Parish, Louisiana

Monthly Progress Report
April 2020

Table of Contents

1.	Executive Summary	1
2.	Project Highlights	1
3.	Environmental, Safety, and Health Progress	1
4.	Schedule	1
5.	Construction and Start up	2
6.	Permitting and Environmental	3
7.	Progress Pictures	4

1. Executive Summary

This report covers activities for the month of April 2020.

Bechtel continues to progress the project and is now at 57.6% complete against the plan of 54.5%. Currently, Engineering is 95.2% complete, Procurement is 83.9% complete, Subcontracts is 40.2% complete, and Construction is 18.1% complete.

2. Project Highlights

During the month of April, Construction completed foundations at the Amine Regeneration Area and pedestals in the Methane Cold Box Area. Area paving was completed at the Inlet Gas Area and the Hot Oil and Surge Drum Area. Erection of structural steel completed in the Inlet Gas Area and the Cryo Rack leave-out and commenced in the Propane Refrigeration Area. Hockey-stick pipe erection completed in the Compressor area, with aboveground pipe completing in the Propane Substation Area and progressing in ten other areas. The heavy lift program is underway, with equipment set from two of five heavy lift positions.

3. Environmental, Safety, and Health Progress

During the reporting month, the following ES&H events occurred:

	Near Miss		First Aid		Recordable		Lost Time	
	Month	ITD	Month	ITD	Month	ITD	Month	ITD
Bechtel	1	2772	10	3833	0	113	0	15
Subcontractor	0	123	0	240	0	9	0	1
Total	1	2895	10	4073	0	122	0	16

4. Schedule

Bechtel continues to progress the project and is now at 57.6% complete against the plan of 54.5%. Currently, Engineering is 95.2% complete, Procurement is 83.9% complete, Subcontracts is 40.2% complete, and Construction is 18.1% complete.

5. Construction and Start up

Activities by Area		
Area	Activities in April	Planned Work for May
Train 6	<ul style="list-style-type: none"> • Completed concrete foundations for Amine Regeneration and Acid Gas Removal Areas, equipment pads in Propane section of Compressor Area, and transformer foundations at Propane Substation Area • Completed concrete pedestals at Amine Regeneration and Acid Gas Removal Area, Methane Cold Box Area, Mercury Removal and Dehydration Area and Propane Substation Area, and commenced at Thermal Oxidizer Area • Completed area paving at Inlet Gas Area and Hot Oil Surge Drum Area • Completed erection of structural steel at East Wall of Compressor Area, leave-out section of Cryo Rack, Inlet Gas Area, and Heavies Removal Unit except for leave-out. Commenced erection of structural steel at bridge section of Mercury Removal and Dehydration Area and Propane Refrigeration Area • Completed installation of aboveground pipe at Propane Substation Area and commenced installation at Utility Piperack • Completed installation of all hockey-stick pipe for Compressor Area • Completed installation of sole plates for compressors in Propane section of Compressor Area • Installed eight of nine transformers at Propane Substation Area • Completed assembly of TC12000 Heavy Lift Crane and commenced Heavy Lift Program, completing sets from positions one and two • Set HS Propane HRC Reflux Chiller in the Heavies Removal Unit • Set Dryer Feed KO Drum, Mercury Removal Beds and Molecular Sieve Dehydrators in the Mercury Removal and Dehydration Area • Set first Lean / Rich Solvent Heat Exchanger in Amine Regeneration and Acid Gas Removal Area • Set Thermal Oxidizer KO Drum in Amine Storage and Thermal Oxidizer Area • Completed cable tray installation in Compressor Substation Area and OSBL piperack R10, and commenced installation in the Propane Substation Area • Commenced cable pulling and terminations at Compressor Substation area • Completed the roof installation on the Amine Surge Tank 	<ul style="list-style-type: none"> • Complete concrete pedestals at the Amine Storage and Thermal Oxidizer Area, Amine Regeneration Area and the south side of Dehydration and Mercury Removal Area • Complete area paving at Acid Gas Removal Area, Methane Cold Box and south side of Mercury Removal and Dehydration Area • Commence erection of process spill trench alongside the Propane Condenser Rack • Commence erection of structural steel in Acid Gas Removal Area and Hot Oil Area • Complete erection of structural steel under the tabletop at the Compressor Area, in Methane Cold Box Area, and Propane Substation Area • Commence installation of aboveground pipe in the Inlet Gas Area and continue in ten other areas • Install the final transformer in the Propane Substation Area • Complete equipment setting from position three of the heavy lift plan, including setting all the Compressors • Set the Rich Solvent Filters, Regenerator Reboilers, Amine Sump Filter, Solvent Flash Drum and Solvent Regenerator Reflux Drum in the Acid Gas Removal Area • Set Stabilizer Feed Drum in the Condensate Stabilization Area • Complete cable tray installation in the Propane Substation Area • Commence high voltage cable pulls in R10 rack • Complete hydrotest of the Amine Surge Tank

6. Permitting and Environmental

Summary of Problems, Non-Compliances, and Corrective Actions

Date	Description
None.	

Agency Contacts/Inspections

Agency	Name	Date	Location/Activity
None.			

7. Progress Pictures



Progress at Train 6



Progress at south end of Train 6



Steel and pipe progress in Train 6



HS Propane Feed Chiller alongside the Dryer Feed KO Drum



Final Hockey-stick pipe in Propane Section of Compressor Area



Hot Oil Surge Drum and Mercury Removal Beds on right



Molecular Sieve Dehydrators



Propane Accumulator

Sabine Pass Liquefaction Project
Cameron Parish, Louisiana

Monthly Progress Report
May 2020

Table of Contents

1.	Executive Summary	1
2.	Project Highlights	1
3.	Environmental, Safety, and Health Progress	1
4.	Schedule	1
5.	Construction and Start up	2
6.	Permitting and Environmental	3
7.	Progress Pictures	4

1. Executive Summary

This report covers activities for the month of May 2020.

Bechtel continues to progress the project and is now at 61.9% complete against the plan of 58.3%. Currently, Engineering is 95.5% complete, Procurement is 90.6% complete, Subcontracts is 42.1% complete, and Construction is 21.0% complete.

2. Project Highlights

During the month of May, construction of pedestals in the Thermal Oxidizer Area and the Dehydration and Mercury Removal Area. Area paving was completed at the Acid Gas Removal area, Methane Cold Box area, the south side of Mercury Removal and Dehydration area. Erection of structural steel completed in the Methane Cold Box Area and the Propane Substation area and commenced in the Hot Oil Area. Testing of the Propane and Ethylene Suction Drum pipe connections was completed, with aboveground pipe now progressing in fifteen (15) areas. The heavy lift program is on target to be completed by mid-July. Pulling of high voltage cables commenced this month.

3. Environmental, Safety, and Health Progress

During the reporting month, the following ES&H events occurred:

	Near Miss		First Aid		Recordable		Lost Time	
	Month	ITD	Month	ITD	Month	ITD	Month	ITD
Bechtel	2	2774	7	3840	0	113	0	15
Subcontractor	0	123	0	240	0	9	0	1
Total	2	2897	7	4080	0	122	0	16

4. Schedule

Bechtel continues to progress the project and is now at 61.9% complete against the plan of 58.3%. Currently, Engineering is 95.5% complete, Procurement is 90.6% complete, Subcontracts is 42.1% complete, and Construction is 21.0% complete.

5. Construction and Start up

Activities by Area		
Area	Activities in May	Planned Work for June
Train 6	<ul style="list-style-type: none"> • Completed concrete pedestals at the Amine Storage and Thermal Oxidizer area and the south side of Dehydration and Mercury Removal area • Completed area paving at Acid Gas Removal area, Methane Cold Box and south side of Mercury Removal and Dehydration area • Commenced erection of process spill trench alongside the Propane Condenser rack • Commenced erection of structural steel in Hot Oil area • Completed erection of structural steel under the tabletop at the Compressor area, in the Methane Cold Box Area and the Propane Substation area • Commenced prefabrication of aboveground pipe in the Inlet Gas area and Hot Oil area • Completed testing of the Propane and Ethylene Suction Drum pipe connections • Installed the final transformer in the Propane Substation area • Commenced equipment setting from position three of the heavy lift plan, which included all Compressors and 4 Gas Turbines • Set the Rich Solvent Filters, Regenerator Reboilers, Solvent Flash Drum and Solvent Regenerator Reflux Drum in the Acid Gas Removal area • Set the Hot Oil Surge Drum in the Hot Oil Area • Set the Propane Refrigerant Accumulator and the Propane Purger Absorber Section in the Propane Condenser Rack • Set the first Propane Refrigerant Condenser (fin fan) in the Propane Condenser Rack • Set the Condensate Stabilizer, the Stabilizer Overhead Drum, Stabilizer Reboiler and the Stabilizer Feed Drum in the Condensate Stabilization area • Completed cable tray installation in the Propane Substation Area • Commenced high voltage cable pulls in R10 rack • Completed hydrotest of the Amine Surge Tank 	<ul style="list-style-type: none"> • Complete concrete pedestals at the Amine Regeneration area and commence leave-out foundations at Fuel Gas Facilities area • Commence concrete base at process spill trench alongside Propane Condenser rack • Commence erection of structural steel in Acid Gas Removal area, the Amine Regeneration area and on the North Stair Tower at the Compressor area • Recommence structural steel erection on upper deck of Compressor area, and commence erection of filter house structure in Compressor area and vendor steel for Cryo Rack and Propane Condenser Rack fin fan installations • Commence installation of aboveground pipe in the upper rack of the AGRU Air Coolers area and Acid Gas Removal area • Complete equipment setting from positions three and four of the heavy lift plan, and relocate heavy lift crane to its final position • Set the final two Gas Turbines in the Compressor area • Set the Thermal Oxidizer and Knock Out Drums in the Thermal Oxidizer and Amine Storage area • Set the CO2 Absorber and the Amine Sump Filter in the Amine Regeneration and Acid Gas Removal areas • Set the Propane De-inventory Pump in the Propane Refrigeration area • Set the first eight (8) fin fans in Cryo Rack • Set the Propane Purger Condenser Section and eight (8) fin fans in the Propane Condenser Rack • Commence cable bus works in the Compressor Substation • Commence cable tray installations in the AGRU piperack • Commence installation of DCS/SIS system in the Compressor Substation

6. Permitting and Environmental

Summary of Problems, Non-Compliances, and Corrective Actions

Date	Description
None.	

Agency Contacts/Inspections

Agency	Name	Date	Location/Activity
None.			

7. Progress Pictures



Progress as seen from North end of Train 6



Progress at Train 6 facing South East



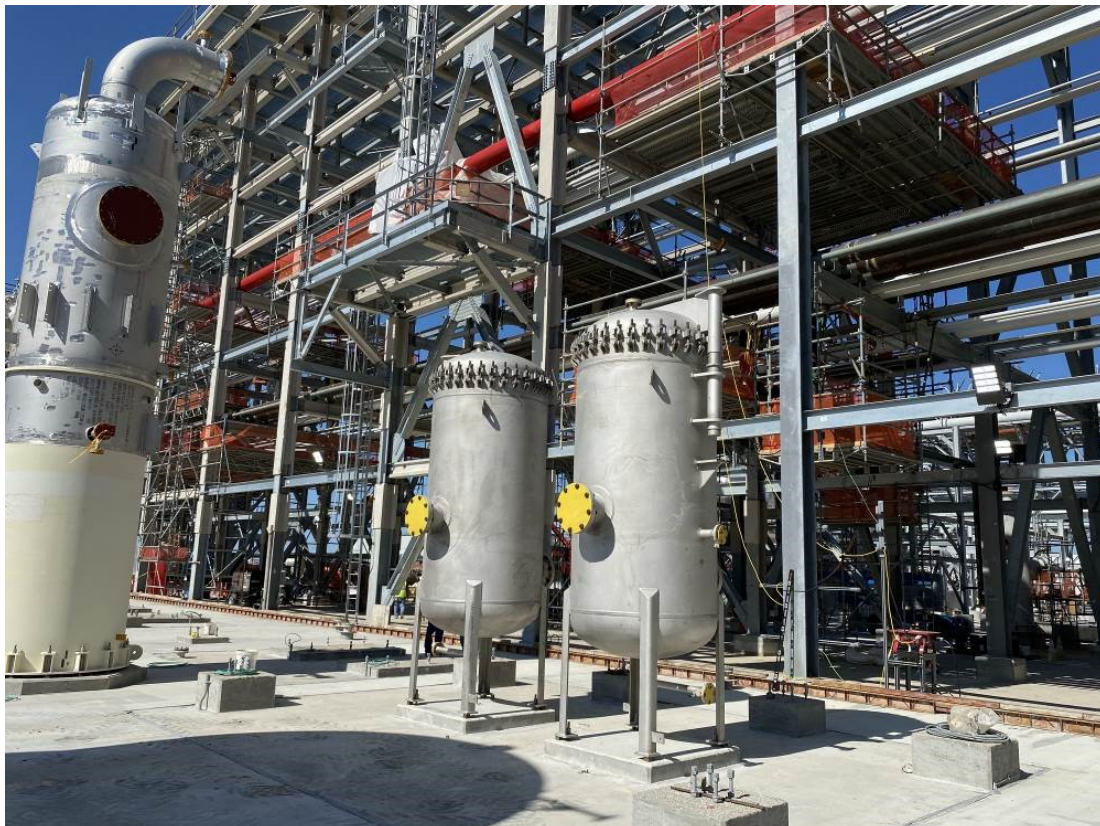
First Compressor being set at Train 6



Methane Compressor String set at Compressor Area



Regenerator Reboilers at Amine Regen. and Acid Gas Removal Area



Solvent Regenerator Reflux Drum and Rich Solvent Filters



First Propane Refrigeration Condenser (Fin Fan) being set at Train 6



First Propane Refrigeration Condenser (Fin Fan) set at Propane Condenser Rack

Sabine Pass Liquefaction Project
Cameron Parish, Louisiana

Monthly Progress Report
June 2020

Table of Contents

1.	Executive Summary	1
2.	Project Highlights	1
3.	Environmental, Safety, and Health Progress	1
4.	Schedule	1
5.	Construction and Start up	2
6.	Permitting and Environmental	3
7.	Progress Pictures	4

1. Executive Summary

This report covers activities for the month of June 2020.

Bechtel continues to progress the project and is now at 63.9% complete against the plan of 59.6%. Currently, Engineering is 96.5% complete, Procurement is 91.1% complete, Subcontracts is 44.3% complete, and Construction is 25.3% complete.

2. Project Highlights

During the month of June, construction completed pedestals in the Amine Regeneration Area and commenced construction of the spill trench construction along the Propane Rack. Erection of structural steel completed in the Hot Oil and Surge Drum Area, the Condensate Stabilization area and the H2S Removal area. Steel erection above the Compressor deck has recommenced. Aboveground pipe installations commenced in the Acid Gas Removal area, the Methane Cold Box area and the Hot Oil Surge Drum area and is now progressing in fifteen (15) areas. The heavy lift program is still on target to be completed by mid-July.

3. Environmental, Safety, and Health Progress

During the reporting month, the following ES&H events occurred:

	Near Miss		First Aid		Recordable		Lost Time	
	Month	ITD	Month	ITD	Month	ITD	Month	ITD
Bechtel	2	2776	13	3853	0	113	0	15
Subcontractor	0	123	0	240	0	9	0	1
Total	2	2899	13	4093	0	122	0	16

4. Schedule

Bechtel continues to progress the project and is now at 63.9% complete against the plan of 59.6%. Currently, Engineering is 96.5% complete, Procurement is 91.1% complete, Subcontracts is 44.3% complete, and Construction is 25.3% complete.

5. Construction and Start up

Activities by Area		
Area	Activities in June	Planned Work for July
Train 6	<ul style="list-style-type: none"> • Completed concrete pedestals at the Amine Regeneration area • Commenced concrete base at process spill trench alongside the Propane Condenser rack • Completed structural steel erection in the Hot Oil Surge Drum area, the Condensate Stabilization area and the H2S Removal area, and commenced in the Acid Gas Removal area and the Amine Regeneration area • Recommended structural steel erection on upper deck of Compressor area, and commenced steel erection of filter house structure in Compressor area and vendor steel for Cryo Rack and Propane Condenser Rack fin fan installations • Commenced installation of aboveground pipe in the upper rack of the AGRU Air Coolers area, the Acid Gas Removal area, the Methane Cold Box area and the Hot Oil Surge Drum area • Completed equipment setting from positions three and four of the heavy lift plan, and relocated heavy lift crane to its final position • Set the final two Gas Turbines in the Compressor area • Set the Thermal Oxidizer and Anti-Foam Injection Skid in the Thermal Oxidizer and Amine Storage area • Set the CO2 Absorber and the Amine Sump Filter in the Amine Regeneration and Acid Gas Removal areas • Set the first eight (8) fin fans in the Cryo Rack • Set the Mercury Removal After Filters in the Dehydration and Mercury Removal area • Set the Propane Purger Condenser Section and nine (9) fin fans in the Propane Condenser Rack • Commenced cable bus works in the Compressor and Propane Substations • Commenced cable tray installations in the AGRU piperack • Commenced installation of DCS/SIS system in the Compressor Substation 	<ul style="list-style-type: none"> • Complete leave-out foundations at Fuel Gas Facilities area • Commence concrete base at lube oil trench alongside the Compressor area • Complete structural steel erection at Hot Oil Sump area and commence on the North Stair Tower at the Compressor area • Commence installation of aboveground pipe in the upper rack of the Ethylene area and the OSBL Utilities piperack • Complete equipment setting from position five of the heavy lift plan • Set the last 3 Lean / Rich Solvent Heat Exchangers, the Solvent Regenerator, and the De-Gassing Drum in the Amine Regeneration and Acid Gas Removal areas • Set twenty-one (21) fin fans and an Analyzer Shelter in the Cryo Rack • Set the LS Propane – Ethylene Condensers, the Suction Drums and the Propane-Methane / Ethylene Feed Drum in the Propane Refrigeration area • Set the Molecular Sieve After Filters and the Dryer Inlet Filter Coalescer in the Dehydration and Mercury Removal area • Set the Hot Oil Sump Filter in the Hot Oil and Surge Drum area • Set the Heavies Removal Column in the Heavies Removal Area • Set twelve (12) fin fans in the Propane Condenser Rack • Commence high voltage cable pulls in the Propane Substation • Complete cable tray installations in the Dehydration and Mercury Removal area and commence in the Amine Storage and Thermal Oxidizer area

6. Permitting and Environmental

Summary of Problems, Non-Compliances, and Corrective Actions

Date	Description
None.	

Agency Contacts/Inspections

Agency	Name	Date	Location/Activity
None.			

7. Progress Pictures



Progress as seen from North end of Train 6



Progress at Train 6 facing North East



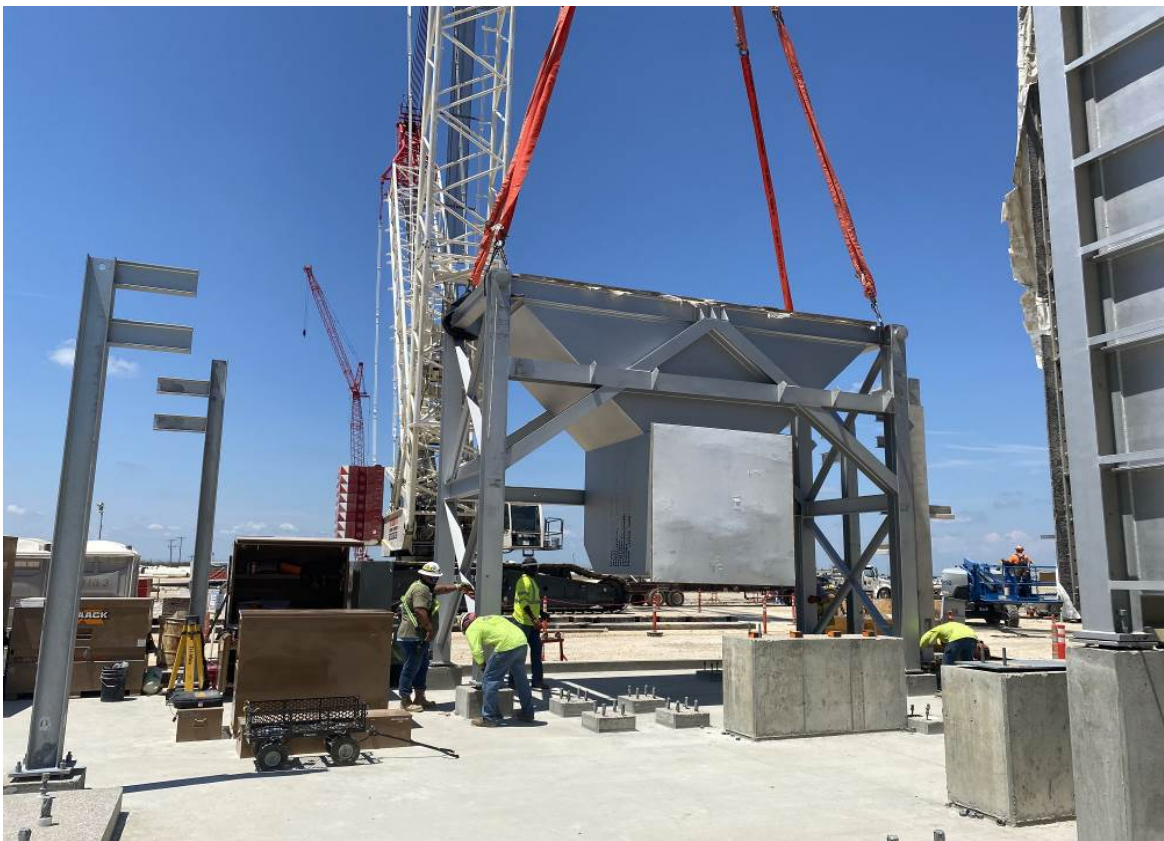
First Section of Thermal Oxidizer



Mercury Removal After Filters



Thermal Oxidizer Pre-Heater being set



Thermal Oxidizer Lower Hot Oil Coil Section



CO2 Absorber



Anti-Foam Injection Skid in the Thermal Oxidizer Area

Sabine Pass Liquefaction Project
Cameron Parish, Louisiana

Monthly Progress Report
July 2020

Table of Contents

1.	Executive Summary	1
2.	Project Highlights	1
3.	Environmental, Safety, and Health Progress	1
4.	Schedule	1
5.	Construction and Start up	2
6.	Permitting and Environmental	3
7.	Progress Pictures	4

1. Executive Summary

This report covers activities for the month of July 2020.

Bechtel continues to progress the project and is now at 67.0% complete against the plan of 64.8%. Currently, Engineering is 97.2% complete, Procurement is 95.6% complete, Subcontracts is 45.7% complete, and Construction is 27.8% complete.

2. Project Highlights

During the month of July, construction commenced on the foundations at the Fuel Gas Facilities leave out area and commenced construction of the lube oil trench alongside the Compressor Area. Erection of structural steel completed in the Hot Oil Sump, with aboveground pipe installations commencing in the Ethylene Cold Box area and in the OSBL Utilities pipe rack and is now progressing in seventeen (17) areas. The heavy lift program was successfully completed by mid-July.

3. Environmental, Safety, and Health Progress

During the reporting month, the following ES&H events occurred:

	Near Miss		First Aid		Recordable		Lost Time	
	Month	ITD	Month	ITD	Month	ITD	Month	ITD
Bechtel	1	2777	6	3859	0	113	0	15
Subcontractor	1	124	0	240	0	9	0	1
Total	2	2901	6	4099	0	122	0	16

4. Schedule

Bechtel continues to progress the project and is now at 67.0% complete against the plan of 64.8%. Currently, Engineering is 97.2% complete, Procurement is 95.6% complete, Subcontracts is 45.7% complete, and Construction is 27.8% complete.

5. Construction and Start up

Activities by Area		
Area	Activities in July	Planned Work for August
Train 6	<ul style="list-style-type: none"> • Commenced leave-out foundations at Fuel Gas Facilities area • Completed structural steel erection at Hot Oil Sump area and the North Stair Tower at the Compressor area • Commenced installation of aboveground pipe in the Ethylene Cold Box area and the OSBL Utilities piperack • Set the last three (3) Lean / Rich Solvent Heat Exchangers, the Solvent Regenerator, and the De-Gassing Drum in the Amine Regeneration and Acid Gas Removal areas • Set twenty one (21) fin fans and an Analyzer Shelter in the Cryo Rack • Set the LS Propane – Ethylene Condensers, the Suction Drums and the Propane-Methane / Ethylene Feed Chiller in the Propane Refrigeration area • Set the Molecular Sieve After Filters, the Regeneration Gas Compressor and the Dryer Inlet Filter Coalescer in the Dehydration and Mercury Removal area • Set the Debutanizer Reflux Condenser and the Heavies Removal Column in the Heavies Removal Area • Set twelve (12) fin fans in the Propane Condenser Rack • Completed the fifth and final equipment sets with the 1,000 TN Heavy Lift crane and commenced demobilizing the crane • Commenced high voltage cable pulls and cable bus installations in the Propane Substation • Completed cable tray installations in the Dehydration and Mercury Removal area and commenced installation in the AGRU Piperack area, the Utility Piperack area and in the Amine Storage and Thermal Oxidizer area • Completed sections 7 and 8 of the LNG Spill trench alongside the Propane Condenser rack and commenced excavation of the Lube Oil Trench in the Compressor area 	<ul style="list-style-type: none"> • Complete leave-out foundations at Fuel Gas Facilities area • Complete area paving at the Fuel Gas Facilities area • Commence concrete base and walls at the lube oil trench alongside the Compressor area • Commence structural steel erection on the Filter House structure in the Compressor area • Commence installation of aboveground pipe at the Amine Regeneration and Acid Gas Removal area • Set the Compressor Area Collection Tank in the Compressor area • Install Thermal Oxidizer fans, ducting, convection and exhaust system at the Thermal Oxidizer area • Set the Wash Water Pumps and the Amine Sump Pump in the Amine Regeneration and Acid Gas Removal areas • Set the second Analyzer Shelter in the Cryo Rack • Set the Heavies Removal Column Reflux Drum in the Ethylene Cold Box area • Set nine (9) fin fans in the Propane Condenser Rack • Set the H2S Removal Skids in the H2S Removal area • Commence low voltage and instrument cable pulls in the Fuel Gas Facilities area and the Propane Condenser rack • Complete all High Voltage cables pulls for Train 6 and OSBL • Commence installation of Fire and Gas conduit • Complete cable tray installations in the AGRU Piperack and commence in the Utilities Piperack • Complete cable bus installations at the Compressor and Propane Substation areas • Commence installation of instruments in the Cryo rack

6. Permitting and Environmental

Summary of Problems, Non-Compliances, and Corrective Actions

Date	Description
None.	

Agency Contacts/Inspections

Agency	Name	Date	Location/Activity
None.			

7. Progress Pictures



Progress at Train 6 facing East



Progress at Train 6 facing South

Sabine Pass Liquefaction, LLC and Sabine Pass LNG, L.P.
July 2020 Monthly Progress Report



Amine Surge Tank Completed



Progress at Propane Refrigeration area

Sabine Pass Liquefaction Project
Cameron Parish, Louisiana

Monthly Progress Report
August 2020

Table of Contents

1.	Executive Summary	1
2.	Project Highlights	1
3.	Environmental, Safety, and Health Progress	1
4.	Schedule	1
5.	Construction and Start up	2
6.	Permitting and Environmental	3
7.	Progress Pictures	4

1. Executive Summary

This report covers activities for the month of August 2020.

Bechtel continues to progress the project and is now at 68.7% complete against the plan of 66.5%. Currently, Engineering is 97.4% complete, Procurement is 95.8% complete, Subcontracts is 47.8% complete, and Construction is 31.7% complete.

2. Project Highlights

During the month of August, construction completed leave-out foundations at Fuel Gas Facilities area and commenced the concrete base and walls at the lube oil trench alongside the Compressor area. Structural steel erection commenced on the Filter House structure in the Compressor area. Aboveground pipe installation commenced at the Amine Regeneration and Acid Gas Removal area and in OSBL piperacks. Night shift began during August, focused on the installation of aboveground pipe in the Heavies Removal area. Construction also set equipment in nine (9) areas, including the setting of the first pumps in the Amine Regeneration and Acid Gas Removal areas and the Fuel Gas Analyzer Shelter in the Cryo Rack, and completed all High Voltage cables pulls for Train 6 and OSBL.

3. Environmental, Safety, and Health Progress

During the reporting month, the following ES&H events occurred:

	Near Miss		First Aid		Recordable		Lost Time	
	Month	ITD	Month	ITD	Month	ITD	Month	ITD
Bechtel	2	2779	10	3869	0	113	0	15
Subcontractor	0	124	1	241	0	9	0	1
Total	2	2903	11	4110	0	122	0	16

4. Schedule

Bechtel continues to progress the project and is now at 68.7% complete against the plan of 66.5%. Currently, Engineering is 97.4% complete, Procurement is 95.8% complete, Subcontracts is 47.8% complete, and Construction is 31.7% complete.

5. Construction and Start up

Activities by Area		
Area	Activities in August	Planned Work for September
Train 6	<ul style="list-style-type: none"> • Completed leave-out foundations at Fuel Gas Facilities area • Commenced foundation works for the leave-out between the Compressor area and the Compressor Substation area • Commenced concrete base and walls at the lube oil trench alongside the Compressor area • Commenced structural steel erection on the Filter House structure in the Compressor area • Commenced installation of aboveground pipe at the Amine Regeneration and Acid Gas Removal area and in OSBL piperacks • Commenced night-shift activities with installation of aboveground pipe in the Heavies Removal area • Set the Compressor Area Collection Tank in the Compressor area • Installed Thermal Oxidizer fans, ducting, convection and exhaust system at the Thermal Oxidizer area • Set the Wash Water Pumps and the Amine Sump Pump in the Amine Regeneration and Acid Gas Removal areas • Set the Fuel Gas Analyzer Shelter in the Cryo Rack • Set the Heavies Removal Column Reflux Drum in the Ethylene Cold Box area • Set four fin fans in the AGRU rack and eight (8) in the Propane Condenser Rack • Set the H2S Removal Skids in the H2S Removal area • Commenced low voltage and instrument cable pulls in the Fuel Gas Facilities area and the Propane Condenser rack • Completed all High Voltage cables pulls for Train 6 and OSBL • Commenced installation of Fire and Gas conduit • Completed cable tray installations in the AGRU Piperack and commenced in the Compressor area and the Utilities Piperack • Completed cable bus installations at the Compressor and Propane Substation areas • Completed pulling and terminating high voltage cables in the BOG Compressor area • Commenced installation of instruments and junction boxes in the Cryo rack • Commenced site preparation activities in preparation for Hurricane Laura 	<ul style="list-style-type: none"> • Complete hurricane preparedness activities in anticipation of Hurricane Laura, assess post-hurricane damages, and complete remedial works • Complete foundation works for the leave-out between the Compressor area and the Compressor Substation area • Complete all concrete works in the OSBL areas • Complete area paving at the Fuel Gas Facilities area • Complete concrete base and walls at the lube oil trench alongside the Compressor area • Complete structural steel erection in the Fuel Gas Facilities area and commence erection of the piperack between the Compressor and Compressor Substation areas • Commence installation of aboveground pipe at the H2S Removal area • Set the Feed Gas Filter Coalescer, the Amine Sump Pump, the Regenerator Reflux Pumps and the Lean Solvent Booster Pumps in the Amine Regeneration and Acid Gas Removal areas • Set the Turbine IAH Water Tank and the Pentane, Fuel Gas and Start-up Fuel Gas Electrical Heaters in the Fuel Gas Facilities area • Set the Ethylene Surge Drum in the Propane Stabilization area • Set the Hot Oil Pumps in the Hot Oil area • Set the remaining four (4) fin fans in the AGRU unit and the remaining five (5) fin fans in the Cryo Rack • Commence low voltage and instrument cable pulls in the Compressor area and the Cryo rack • Complete cable tray installations in the Amine Regeneration and Acid Gas Removal area, the Heavies Removal Unit, the H2S Removal area, and the Utilities Piperack

6. Permitting and Environmental

Summary of Problems, Non-Compliances, and Corrective Actions

Date	Description
None.	

Agency Contacts/Inspections

Agency	Name	Date	Location/Activity
None.			

7. Progress Pictures



Progress at Train 6 facing East



Progress at Train 6 facing South



Progress at Thermal Oxidizer



Second Analyzer Shelter



Wash Water Pumps