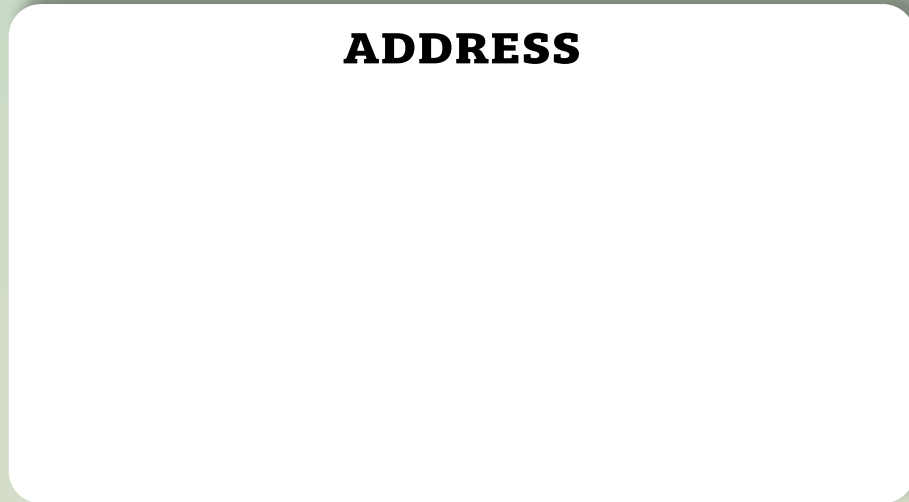




**U.S. DEPARTMENT OF ENERGY
PORTSMOUTH GASEOUS DIFFUSION PLANT**

3930 U.S. Route 23 South
Piketon, OH 45661

ADDRESS



ASER Summary...



Detailed information and results on more than 10,000 environmental samples on and around the former Portsmouth Gaseous Diffusion Plant in Pike County.

- All results significantly below limits set by U.S. and Ohio environmental laws
- Includes data from air, water, soil, sediment, vegetation, wildlife, crops, milk and eggs
- Average American receives 611 millirems of radiation in one year from natural and man-made sources; annual dose from Portsmouth plant is 0.92 millirem.

Protecting Our Employees, Community, and Environment

The U.S. Department of Energy is dedicated to ensuring communities near our facilities are safe for our workers, our neighbors, and our environment.

The new Annual Site Environmental Report (ASER) summarizes the environmental monitoring and compliance activities at the U.S. Department of Energy Portsmouth Gaseous Diffusion Plant (PORTS) for 2018.

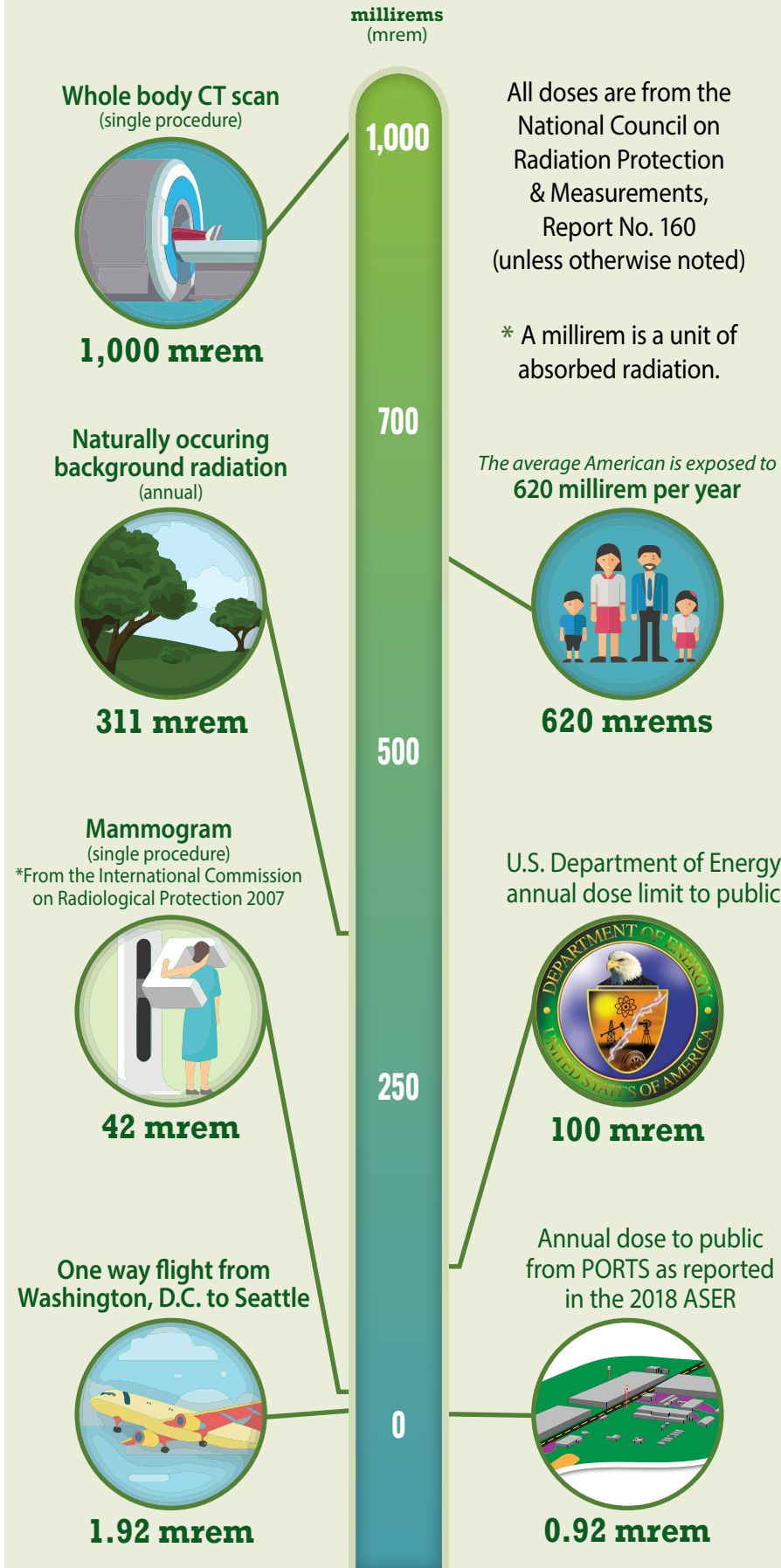
The Department of Energy is responsible for the environmental cleanup of the former gaseous diffusion facility which enriched uranium for defense and commercial uses.



U.S. Department of Energy Portsmouth Site
Office of Environmental Management

Annual Site Environmental Report
Now Available
UPDATED

RELATIVE DOSES FROM RADIATION SOURCES



What did sampling find?

Environmental data published in the 2018 ASER is consistent with previous years indicating that radionuclides, metals, and other chemicals released by PORTS have minimal effect on human health and the environment. All results found are significantly below the limits set by state and federal environmental laws.

But radiation levels are not zero?

That's right, because radiation occurs everywhere. Most occurs naturally, it's called background radiation. Some sources of background radiation include natural minerals, radon in the air and potassium in food. According to the National Council on Radiation Protection and Measurements, the average American is exposed to 620 millirem per year. About half of that comes from background radiation, the rest comes from human-made radiation like diagnostic medical tools and equipment, even some watches, clocks and smoke detectors.

The Department of Energy has established a total public annual dose limit of 100 millirems per year above background.

The 2018 ASER reports the total annual dose was significantly less at 0.92 millirem per year.

How do we monitor to protect our community?

Environmental monitoring includes more than 10,000 sampling results from the collection of air, water, soil, sediment, and biota (vegetation, deer, fish, crops, milk, and eggs) on and off site.

The monitoring goes on throughout the year to ensure operations protect human health and the environment by complying with all state and federal regulations.

Environmental Sampling Includes...



Surface Water



Groundwater



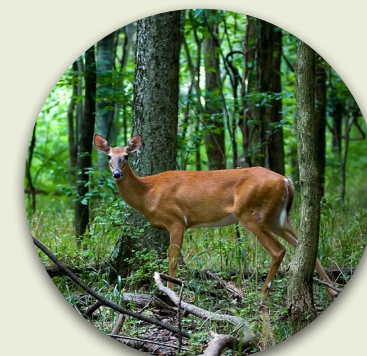
Crops



Soil



Ambient Air



Wildlife

Annual Site Environmental Report (ASER)

- The Annual Site Environmental Report, ASER, is prepared annually for the public. It is a comprehensive summary of environmental activities and monitoring data from the U.S. Department of Energy's Portsmouth Gaseous Diffusion Plant.
- Current and past copies of the ASER are available to the public at:



Online at <https://eic.ports.pppo.gov>

- DOE Environmental Information Center (EIC) at the OSU Endeavor Center, 1864 Shyville Road, Piketon, Ohio

EIC Hours of Operation

- Monday & Tuesday
9:00 – 12:00
- Wednesday & Thursday
12:00 – 4:00

* Hours may be temporarily impacted by COVID-19

If needed, after-hour appointments shall be available.

Local Libraries

Copies of the 2018 ASER are also available at public libraries in Jackson, Pike, Ross & Scioto Counties.