

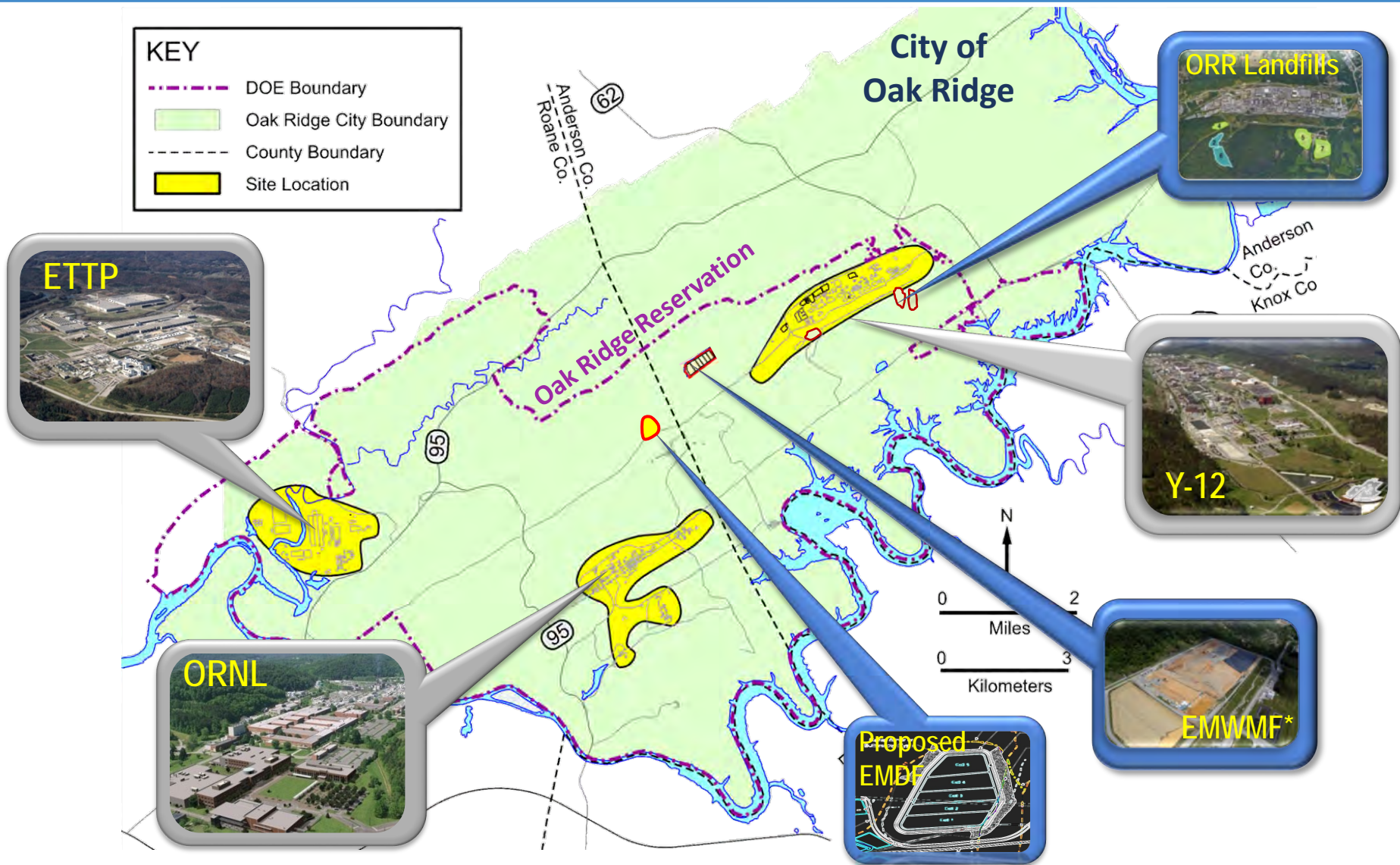


Ongoing Efforts to Assure Waste Disposal Capacity for the Oak Ridge Reservation

Brian Henry, Y-12 Portfolio Federal Project Director
Oak Ridge Office of Environmental Management

November 14, 2018

Oak Ridge Reservation and Current/Future Waste Disposal Facilities



* Environmental Management Waste Management Facility

Oak Ridge Reservation (ORR) Landfills/Waste Disposal Facilities

- DOE operates several engineered landfills for safe and compliant disposal of ORR remediation, demolition, and sanitary waste
- Operating ORR landfills are permitted by Tennessee Division of Solid Waste Management
- Environmental Management Waste Management Facility (EMWWMF) and planned Environmental Management Disposal Facility (EMDF) fall under the regulatory requirements of the Comprehensive Environmental Response, Compensation, and Liability Act (CERCLA)
- Each landfill/waste disposal facility has established waste acceptance criteria to determine whether waste is acceptable for disposal

Landfills/EMWMF are located near the Y-12 National Security Complex



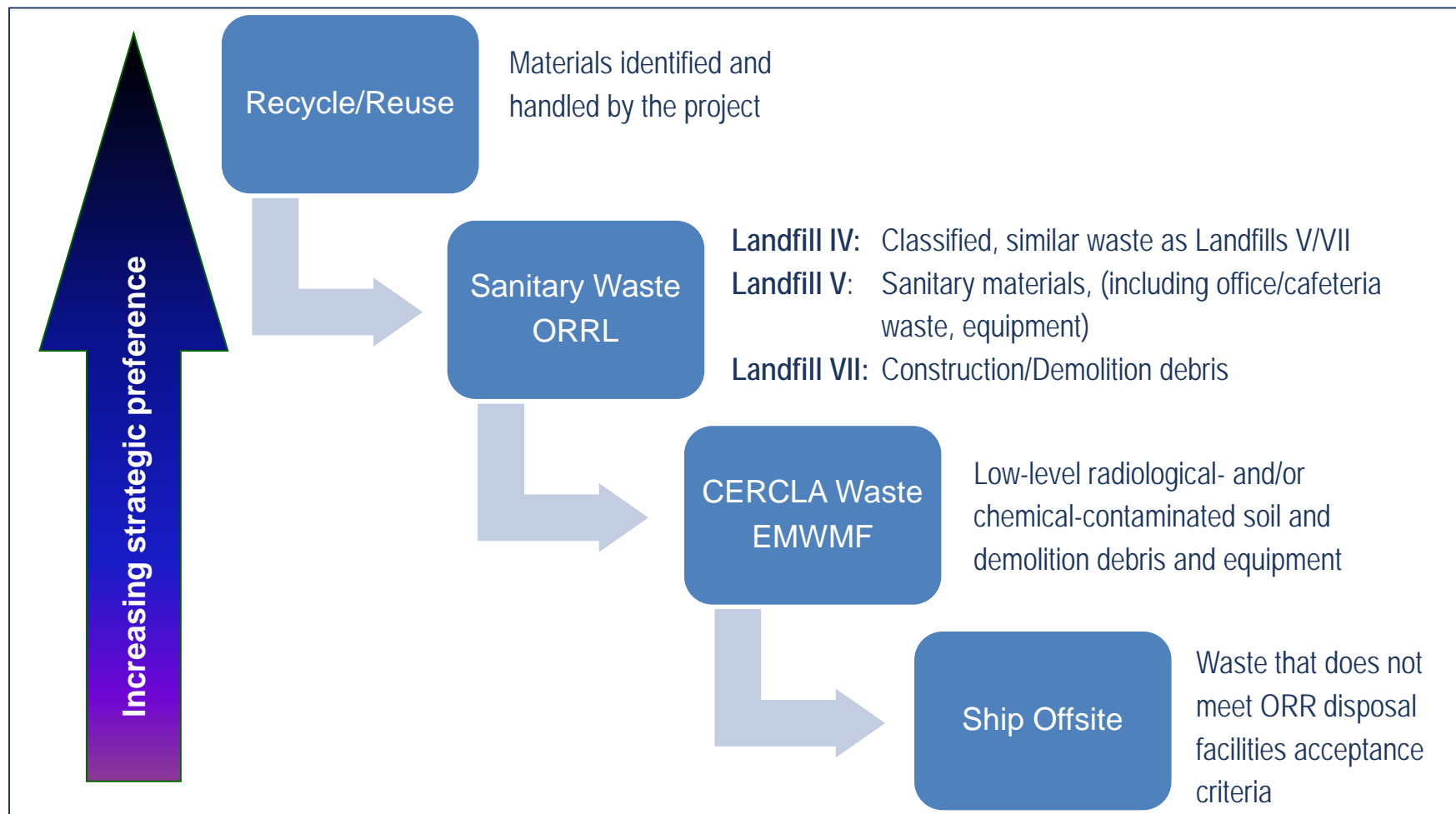
-  Operational Facilities
-  Closed Facilities

Different disposal facilities available for different waste streams

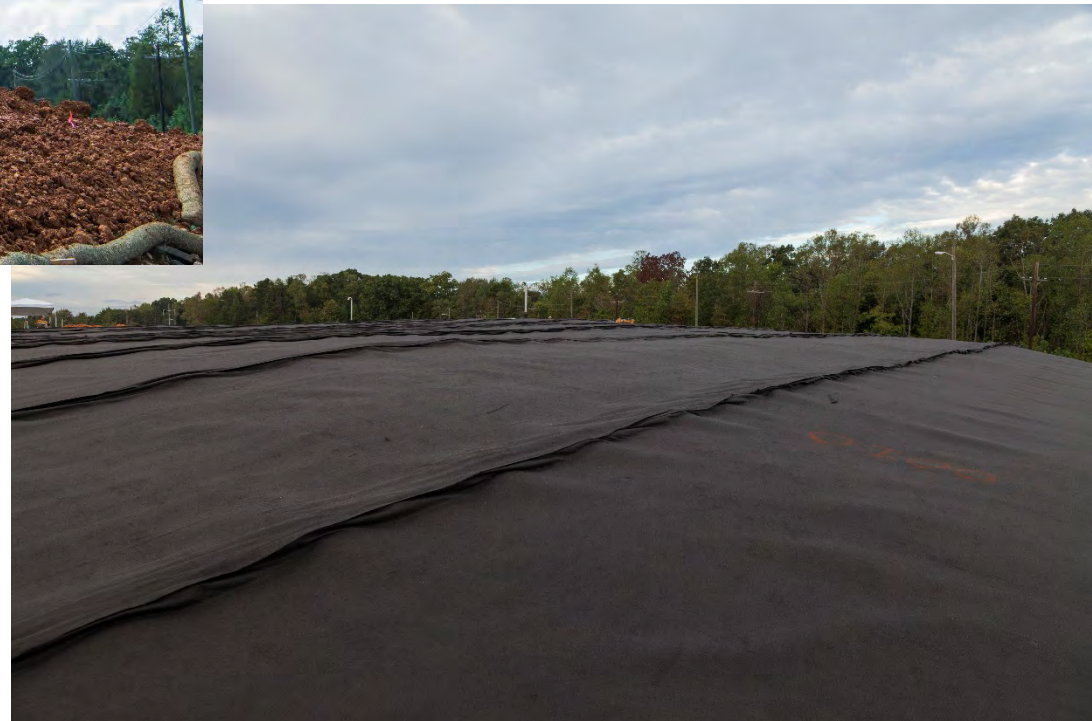


Waste Disposal Facility	Type	Waste Received
Industrial Landfill IV	TDEC Permit	Classified, sanitary industrial waste (including office waste, equipment, construction/demolition debris)
Industrial Landfill V	TDEC Permit	Sanitary industrial waste (including office/cafeteria waste, equipment, construction/demolition debris)
Construction/Demolition Landfill VII	TDEC Permit	Nonradiological and nonhazardous construction/demolition debris
EMWMF	CERCLA	Low-level radiological and/or chemical soil and demolition debris, equipment, and cleanup waste
EMDF	CERCLA	In planning process (similar types of waste as EMWMF)

Waste disposal decisions follow waste hierarchy



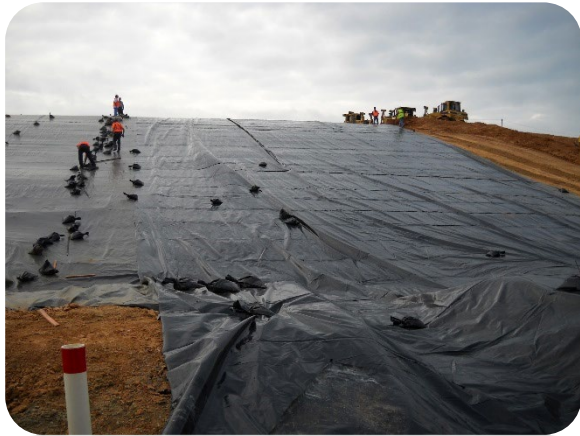
Industrial Landfill IV Area 1 Final Cap is being installed



Remaining capacity supports completion of East Tennessee Technology Park cleanup

Environmental Management Waste Management Facility (Low-Level/Hazardous CERCLA Cleanup Waste)

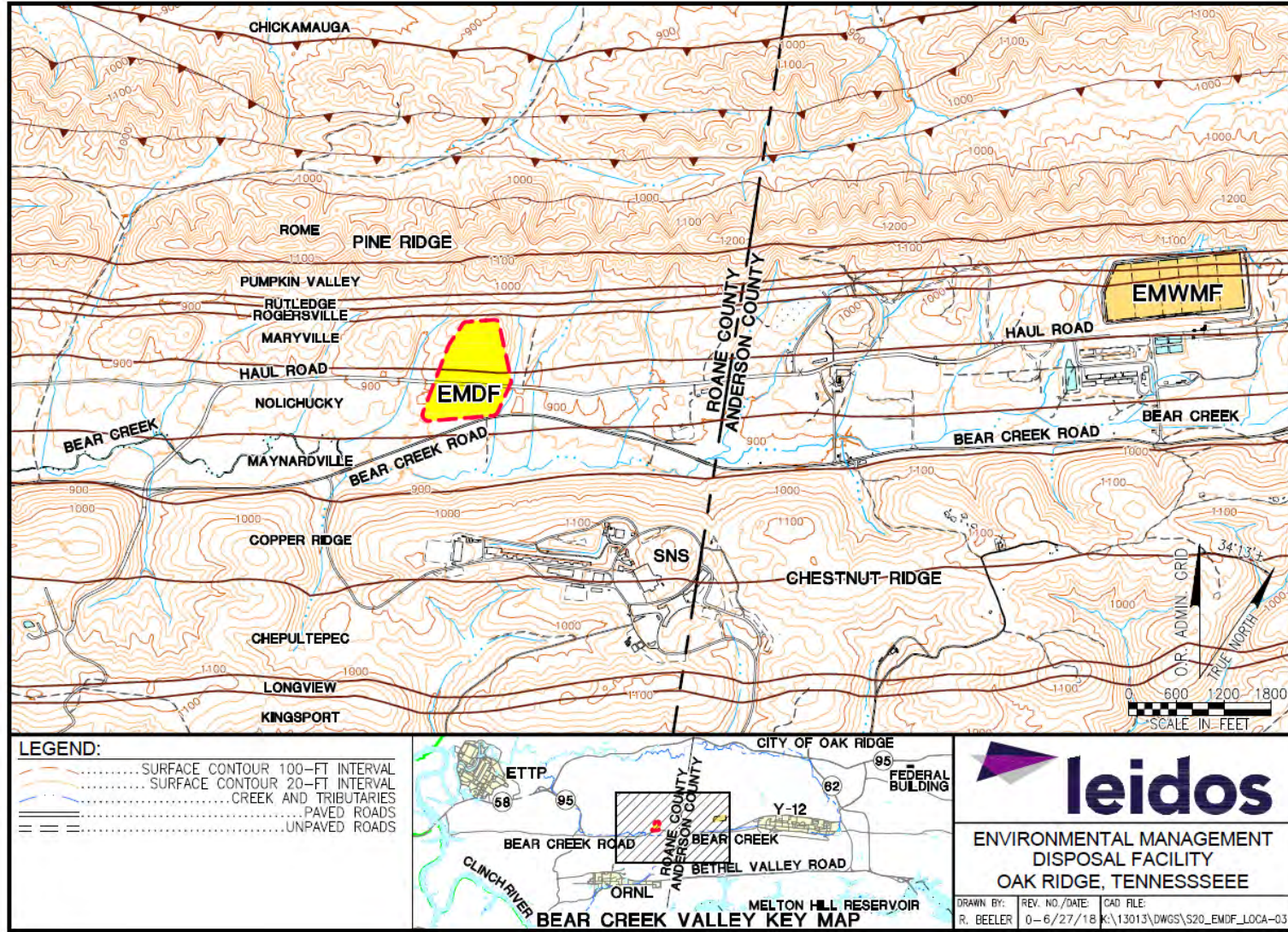
- 28-acre disposal facility, opened in 2002 (17 years of safe operation)
- Waste disposed is low-level radiological and/or hazardous waste from CERCLA cleanup of ORR and associated sites
- Approximate total capacity of 2.3 million cubic yards with redesign, more than 70% full



Environmental Management Disposal Facility (Low-Level/Hazardous CERCLA Cleanup Waste)

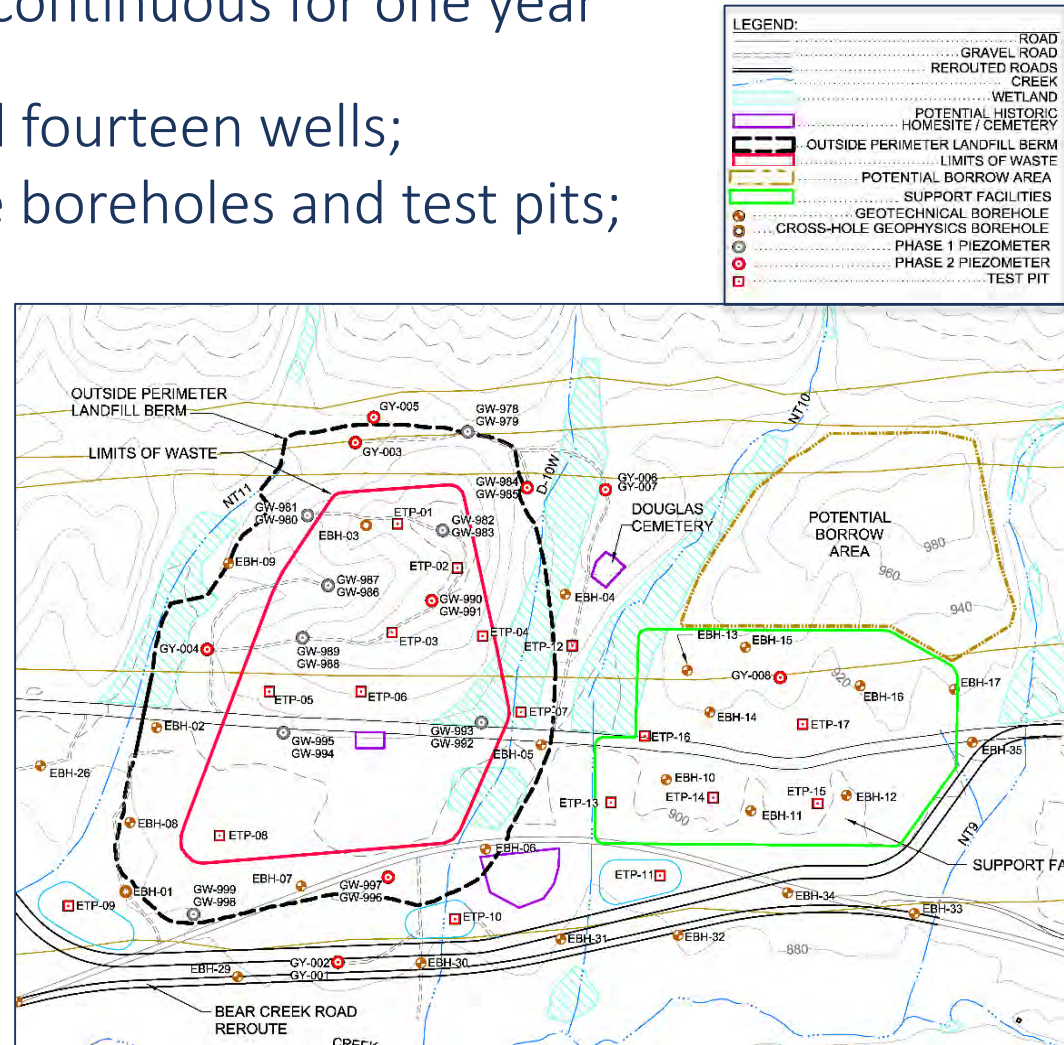
- Proposed Plan submitted on September 7, 2018 indicating preferred alternative is located in Central Bear Creek Valley; public comments requested by December 10, 2018
- Recently completed first phase of characterization at site; this information will be basis of future preliminary and final design of the facility
- Currently conducting a second phase of characterization to support facility design, supporting infrastructure, and road reroutes
- Projected disposal capacity is up to 2.2 M cubic yards
- Operational overlap of two years with EMWMF

Conceptual design at the Central Bear Creek Valley site is presented in the Proposed Plan



Ongoing characterization at the Central Bear Creek Valley site

- Phase I installed sixteen wells; measured surface flow parameters; sampling continuous for one year
- Phase II installing additional fourteen wells; installing/sampling multiple boreholes and test pits; conducting seismic testing



Adequate on-site waste disposal capacity is essential for the successful cleanup of Y-12 and ORNL



- Public comments on the Proposed Plan are due by December 10, 2018; will be considered by DOE, TDEC, and EPA in the decision-making process resulting in the Record of Decision in 2019
- Responses to public comments will be provided in the Record of Decision

QUESTIONS?