

# Improving Data Center Energy Efficiency through End-to-End Cooling Modeling and Optimization



University of Colorado Boulder  
Wangda Zuo, Associate Professor  
[Wangda.Zuo@Colorado.edu](mailto:Wangda.Zuo@Colorado.edu)

# Project Summary

## Timeline:

Start Date: 10/1/2016

Planned end date: 11/30/2019

## Key Milestones

- Optimization of Cooling System Operation; 12/31/17
- Optimization of Airflow Management System; 11/30/18
- Simultaneous Optimization of Airflow Management and Cooling Systems; 8/31/19

## Budget:

### **Total Project \$ to Date:**

- DOE: \$87,141 (9/16-8/17)
- Cost Share: \$28,279 (9/16-8/17)

### **Total Project \$:**

- DOE: \$522,460
- Cost Share: \$92,185

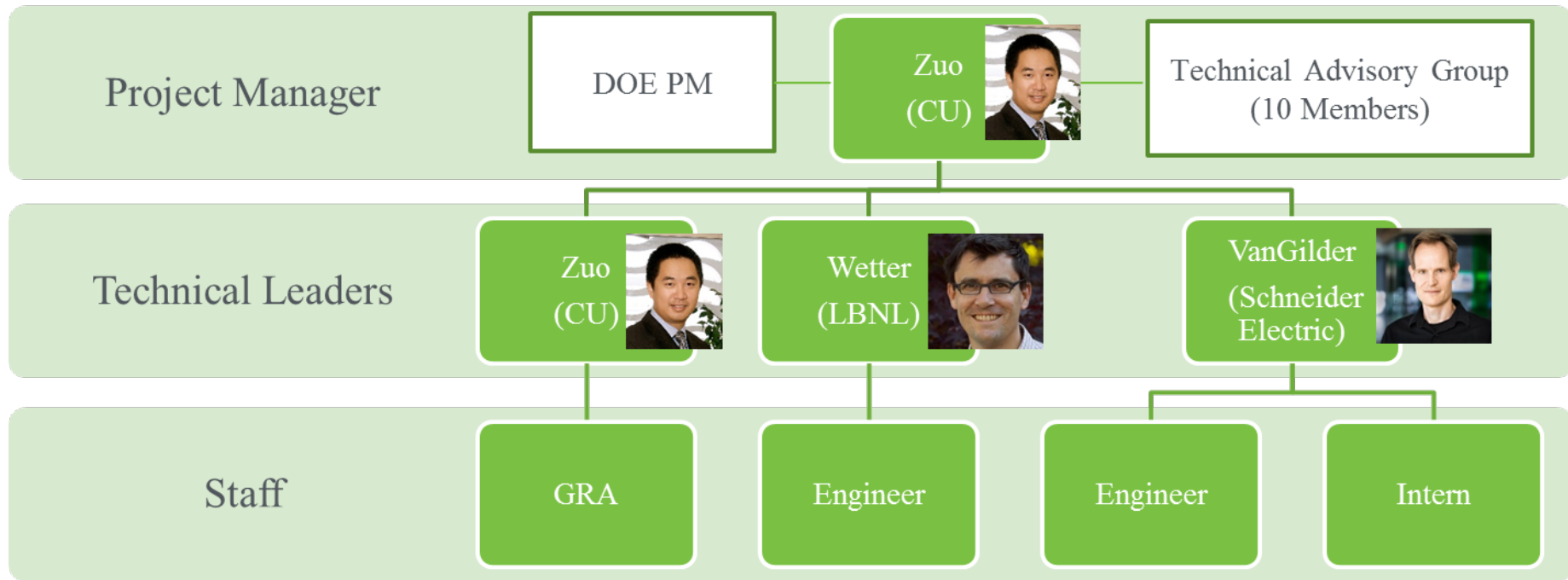
## Key Partners:

University of Colorado Boulder
Lawrence Berkeley National Laboratory
Schneider Electric
University of Miami
University of Massachusetts Medical School

## Project Outcome:

- A holistic data center cooling system modeling and optimization software at Technical Readiness Level (TRL) 7.
- Demonstrated 30% energy savings at two data centers in Massachusetts and Florida.

# Team



# Challenge

## Problem Definition:

- Data centers in the US use about 2% electricity of the nation and half of this is used for cooling<sup>[11]</sup>. The estimated electricity usage for data center cooling will be about 70 billion kWh in 2020.
- Current data center modeling programs focus on either data center room airflow management or cooling system simulation, with models designed only for limited, specific applications.

## Solutions:

- Develop first practical tool that **couple the modeling of airflow-management and cooling systems to enable a global data center cooling optimization.**
- The tool will have three unique features:
  1. Optimization of cooling system operation enabled by Modelica models.
  2. Optimization of airflow management systems by coupling optimization engine with fast indoor airflow simulation.
  3. Simultaneous optimization of airflow management and cooling system by seeking a global optimal solution via coupled simulation of both systems.

# Impact

At a target level of performance (**30% saving in cooling energy**), a nationwide adoption of this tool will potentially reduce annual electricity usage by 21 billion kWh and save about \$2.2 billion. The target market size is estimated to be about \$593 million in 2020.

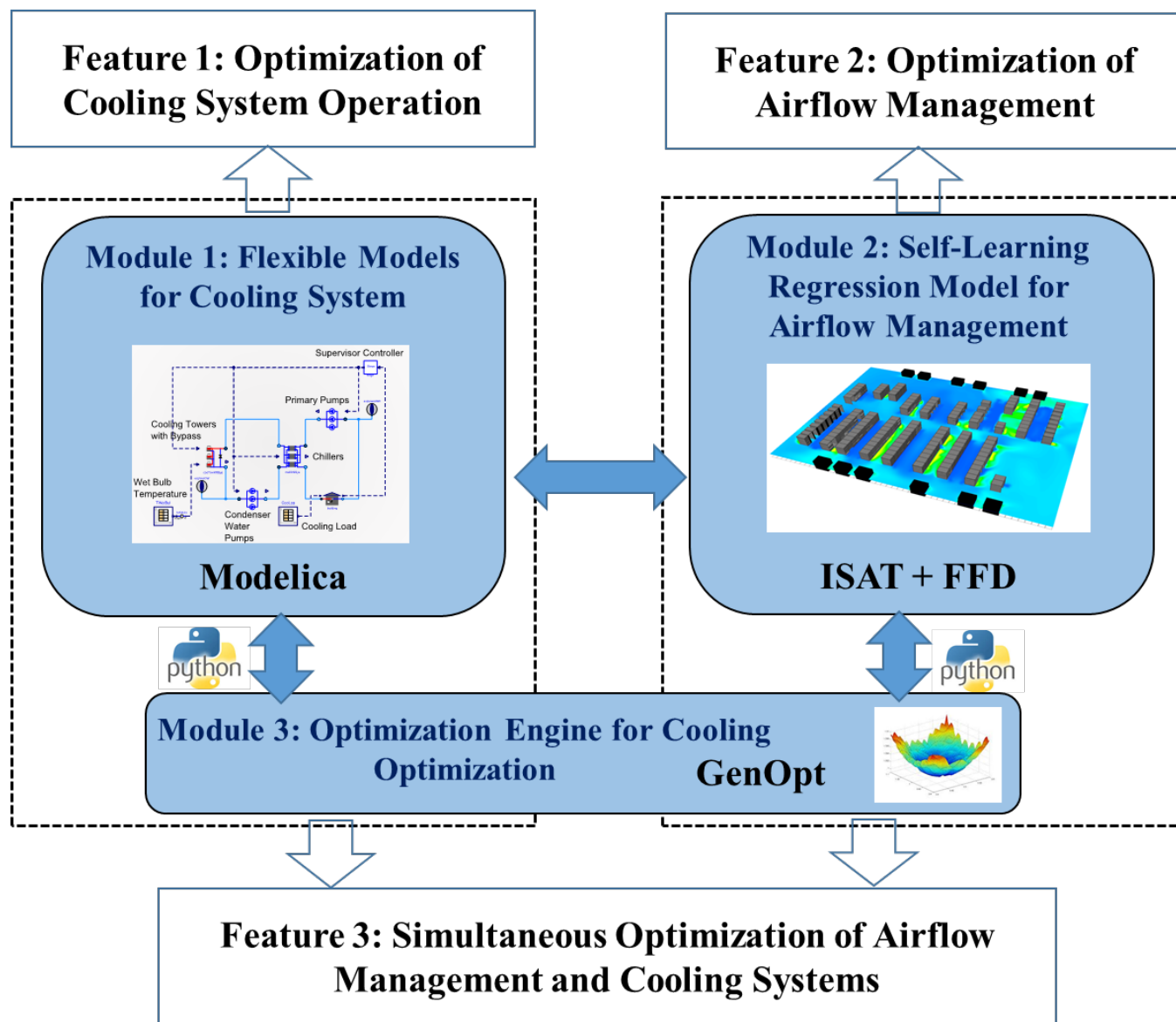
The impact can be achieved by making the tool into three independent open source modules which will then allow:

- the free use of the tool for data center designers, consultants and managers;
- the modules to be integrated into DOE's tools, such as Modelica Buildings library and Spawn-of-EnergyPlus;
- the modules to be adopted and integrated into other existing data center management software by companies and other institutions.

A solid **commercialization plan** with partners will be developed:

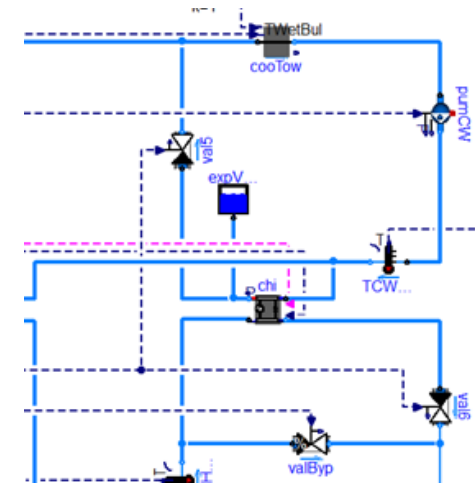
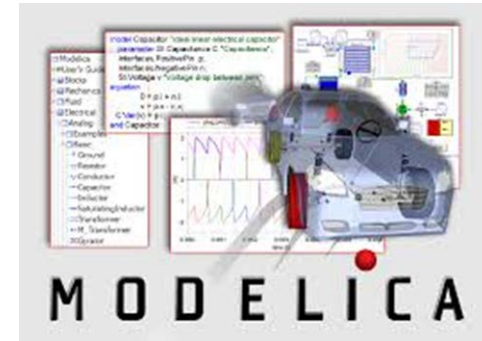
- Active engagement with various stakeholders will be performed.
- Contribution to DOE's Modelica Buildings library
- Schneider Electric, the largest data center infrastructure provider in the US, is leading the commercialization plan.

# Approach: Holistic Solution with Independent Modules



# Approach: Modelica Models for Cooling System

- Modelica: equation-based, object-oriented modeling language for the simulation of dynamic systems
- Leverage and contribute to DOE's open source **Modelica Buildings library**<sup>[5]</sup> for building energy and control system
- Create **various component models** for data center cooling systems that allow the quick formulation of system models by dragging, dropping and connecting component models from the library.
- Provide **template system models** for reuse or adaptation to a specific data center.
- Link the Modelica models with open source GenOpt<sup>[7]</sup> optimization engine for **model-based optimization** to identify optimal control setpoints of the data center cooling system

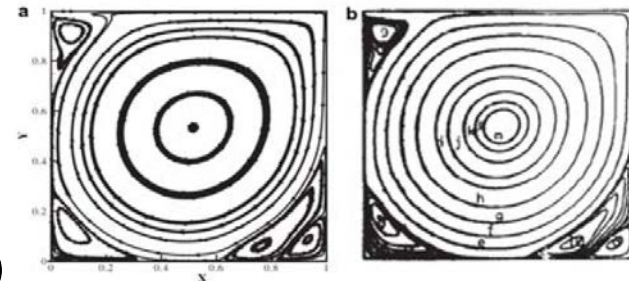


Screen shot of Modelica models

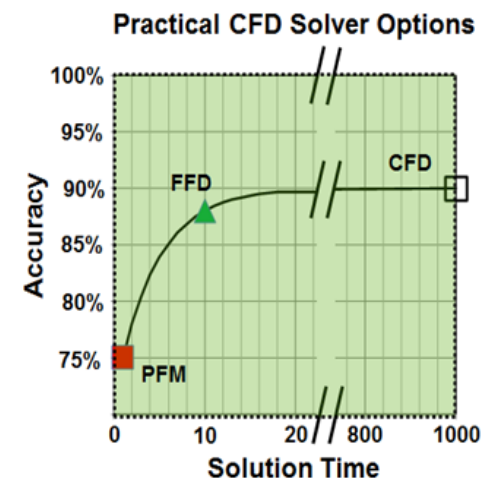


# Approach: New Data Center Airflow Model

- **Fast Fluid Dynamics (FFD)** model runs 50 times faster than convectional Computational Fluid Dynamics (CFD) model with a comparable accuracy<sup>[3]</sup>
- Running FFD in parallel on a **Graphics Process Unit (GPU)** could speed up the simulation 1,200 times<sup>[21]</sup>
- **In Situ Adaptive Tabulation (ISAT)**: a regression algorithm for the approximation of nonlinear relationship<sup>[4]</sup>:
  - Inputs within the region of accuracy: Linear interpolation using a data table with training data provided by nonlinear function (e.g. FFD)
  - Otherwise: call nonlinear function and grow the data table with new data from nonlinear function (**Self-learning**)
- **Coupling ISAT and FFD on GPU**: a fast and self-learning model for data center airflow management



Streamlines of a lid-driven cavity flow simulated by FFD (left) and CFD (right)<sup>[3]</sup>



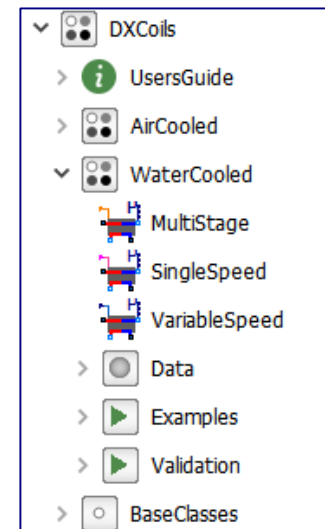
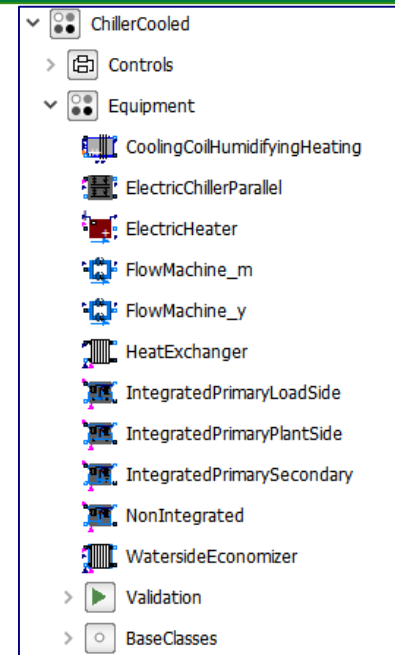
Solution time and accuracy of various data center airflow modeling methods (PFM: Potential Flow Model)<sup>[22]</sup>



# Progress: New Modelica Models for Data Center

Created 81 new Modelica models in open source Modelica Buildings library (V5.0.0) which was released on 12/2017<sup>[12]</sup>. They include

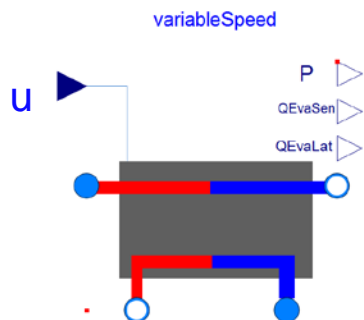
- **Chilled Water System Models (58 Models):**
  - **11 Component Models:** Computer Room Air Handler, Waterside Economizers (WSEs), etc.
  - **7 Control Models:** Cooling Mode Control, Chiller Stage Control, Cooling Tower Stage Control, etc.
  - **3 System Models:** Chilled Water Systems at 3 different configurations
  - **18 Example Models and 19 Base Models**
- **DX Cooled System Models (23 Models)**
  - **3 Component Models:** Single-Stage, Multiple-Stage and Variable-Speed Water Cooled Computer Room Air Conditioner (CRAC);
  - **3 Control Models:** Cooling Mode Control, Airside Economizer Control, CRAC Speed Control.
  - **1 System Model:** Variable Speed CRAC System with Airside Economizers
  - **9 Example Models and 7 Base Models**



# Progress: New Component Model in Modelica

All new component models for data center cooling system have (1) graphic representation as an icon; (2) diagram for implementation; (3) documentation in html embedded in the model; (4) example models for validation.

## Example: Water-cooled Variable Speed Computer Room Air Conditioner (CRAC)



Icon of CRAC Model

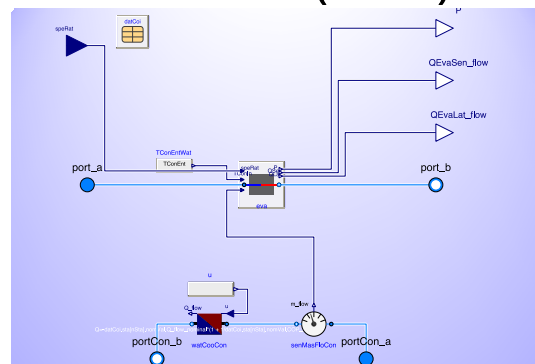


Diagram of CRAC Model

### User's Guide

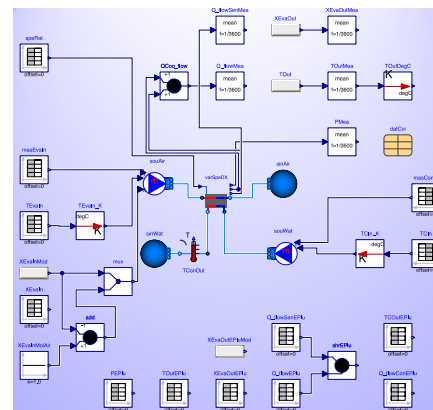
#### Information

This package contains models for direct evaporation cooling coils (DX coils).

The following six DX coil models are available:

DX coil condenser	DX coil model	Properties	Control signal
Air-cooled	Buildings.Fluid.HeatExchangers.DXCoils.AirCooled.MultiStage	Coil with multiple operating stages, each stage having a constant speed. Each stage has its own performance curve, which may represent the coil performance at different compressor speed, or the coil performance as it switches between cooling only, cooling with hot gas, reheat, or heating only.	Integer: 0 for off, 1 for first stage, 2 for second stage, etc.
Air-cooled	Buildings.Fluid.HeatExchangers.DXCoils.AirCooled.SingleSpeed	Single stage coil with constant compressor speed	Boolean signal: true if coil is on.
Air-cooled	Buildings.Fluid.HeatExchangers.DXCoils.AirCooled.VariableSpeed	Coil with variable speed compressor with lower speed limit. If the control signal is below the lower limit, the coil switches off. It switches on if the control signal is above the lower limit plus a hysteresis. By default, the minimum speed ratio is minSpeRat, and obtained from the coil data record datCoil.minSpeRat. The hysteresis is by default speDeaBanRat=0.05.	Real number: 0 for off, 1 for coil at full speed.
Water-cooled	Buildings.Fluid.HeatExchangers.DXCoils.WaterCooled.MultiStage	Coil with multiple operating stages, each stage having a constant speed. Each stage has its own performance curve, which may represent the coil performance at different compressor speed, or the coil performance as it switches between cooling only, cooling with hot gas, reheat, or heating only.	Integer: 0 for off, 1 for first stage, 2 for second stage, etc.
Water-cooled	Buildings.Fluid.HeatExchangers.DXCoils.WaterCooled.SingleSpeed	Single stage coil with constant compressor speed	Boolean signal: true if coil is on.

Documentation for CRAC Model



Example for validating CRAC Model

# Progress: New System Model Templates in Modelica

## System Model Templates:

- provide graphic models with detailed documentation
- provide models for post-processing with visualization capacity
- allow users to build their own system models by modifying the templates

## Example: Primary-only Chilled Water System with Integrated Waterside Economizer

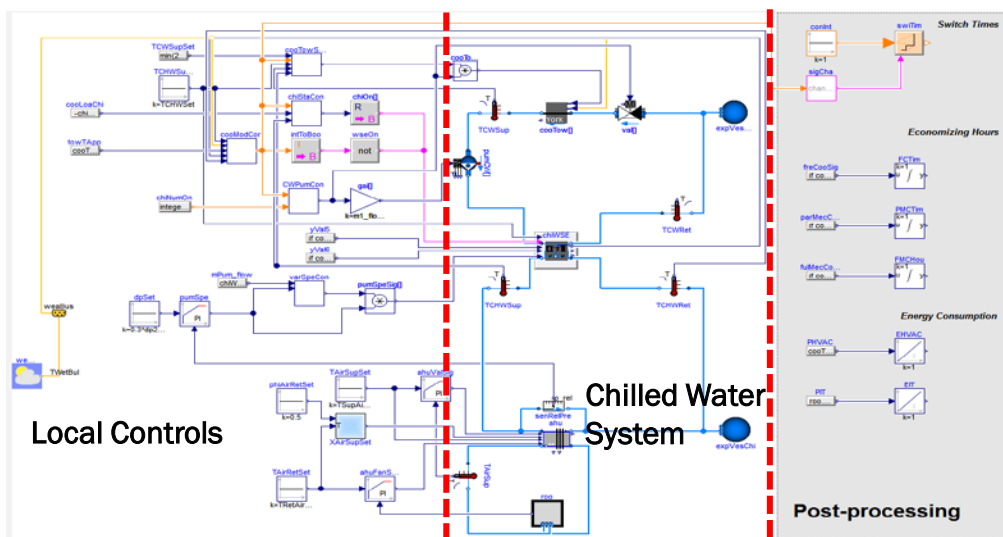
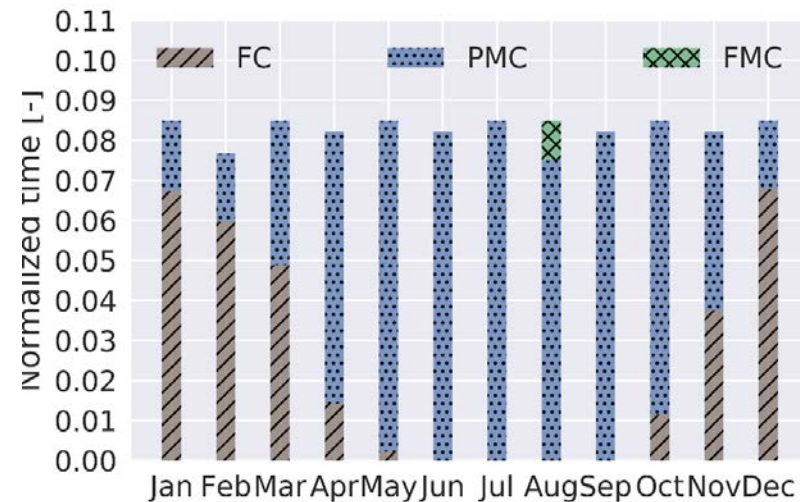


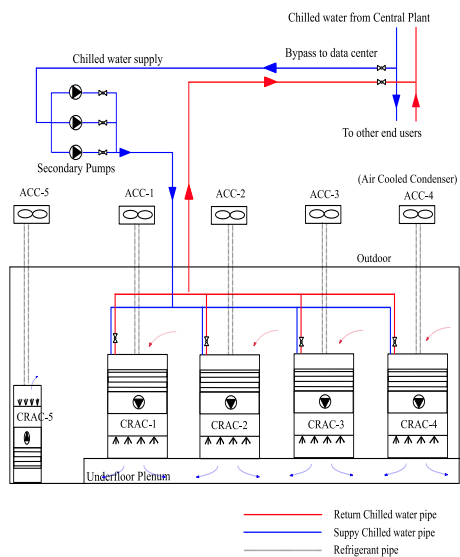
Diagram of Modelica Implementation



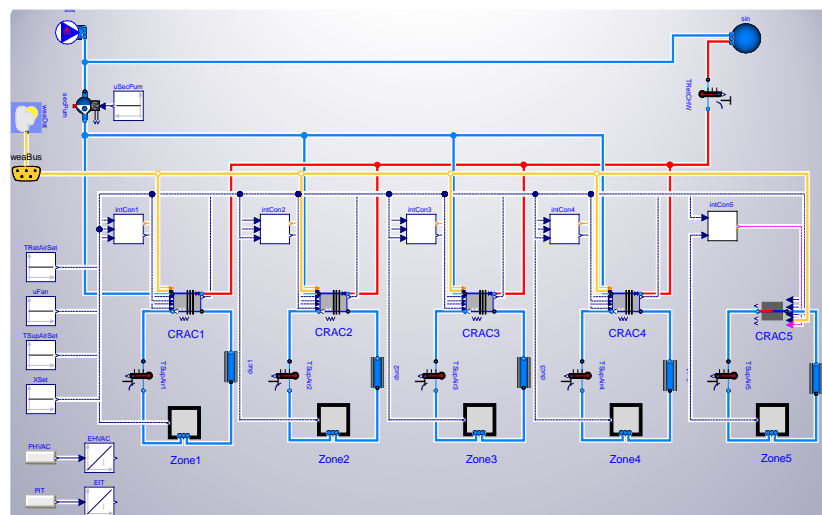
Simulated monthly normalized run time of Free Cooling (FC), Partial Mechanical Cooling (PMC), Fully Mechanical Cooling (FMC)

# Progress: Demonstration at Data Center 1

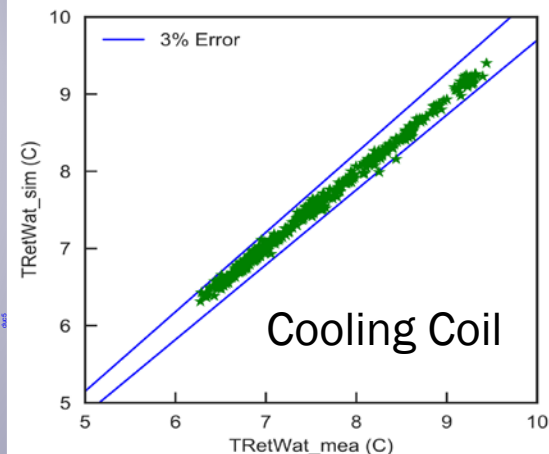
- **Location:** Florida
- **Climate Zone:** 1A – very hot and humid
- **Cooling System:** chilled water + air-cooled direct-expansion (DX) system
- **Identified energy saving measures by model-based analysis**
  - Clean cooling coil to increase the system efficiency
  - Optimize return air temperature setpoint to minimize the usage of DX system
- **Identified Potential Energy Saving: 58%**



System Schematic



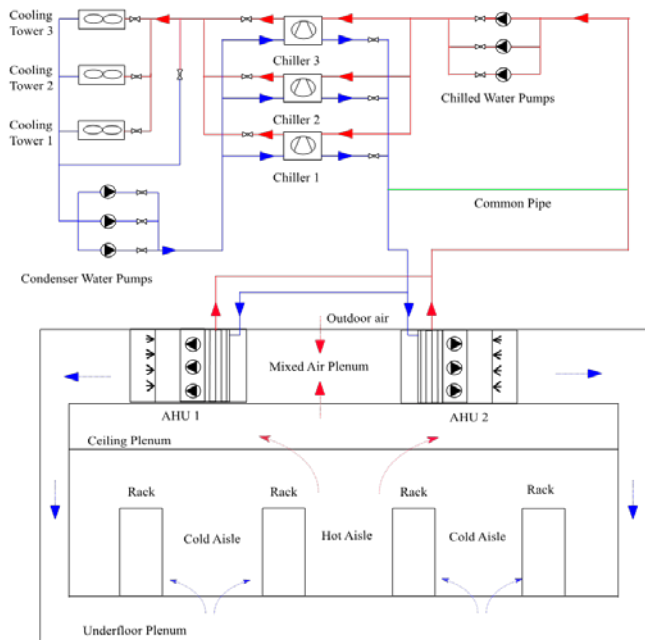
Modelica Implementation



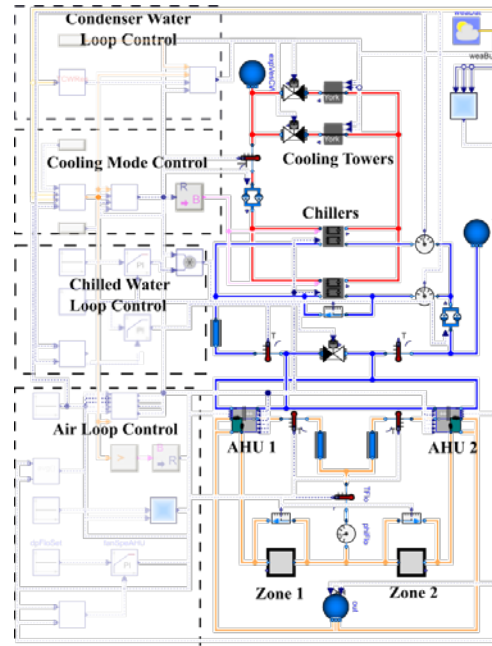
Model Validation

# Progress: Demonstration at Data Center 2

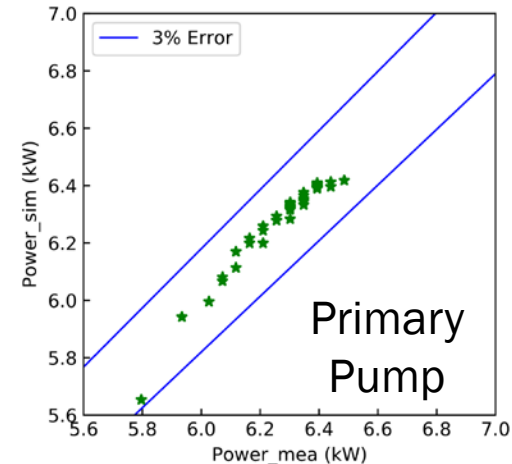
- **Location:** Massachusetts
- **Climate Zone:** 5A – cool and humid
- **Cooling System:** chilled water system + airside economizer
- **Identified energy saving measures by model-based analysis**
  - Clean cooling coil
  - Optimize cooling mode control to maximize free cooling
  - Optimize the AHU control to eliminate simultaneous heating and cooling
- **Potential Energy Saving: 24.4%**



System Schematic



Modelica Implementation



Model Validation

# Stakeholder Engagement

The project is in its middle stage (Year 2 of 3-year project).

**Technical Advisory Group (TAG)** consisting of key stakeholders:

- Data Center Operators/Managers from universities, banks, national labs;
- Data Center Designers and Consultants;
- Experts from Federal Government and ASHRAE

TAG meetings to refine the scope of work (11/16) and review the outcome of Year 1 (03/18)

Closely working with ASHRAE data center energy calculation group (presented the project progress 3 times since 9/2016)<sup>[13-15]</sup>.

Engage other key stakeholders via **publications**<sup>[4, 12, 16-18]</sup>, **presentations**<sup>[20]</sup>, **project website** (<https://www.colorado.edu/lab/sbs/doe-datacenter>), and **one-to-one interactions**.

TAG Institutions
Amzur Technologies
Carrier Corporation
CEC Group, LLC
JPMorgan Chase & Co.
Keystone Critical Systems & Advisors
Lawrence Berkeley National Laboratory
MITRE Corporation
Syska Hennessy Group, Inc.
University of Massachusetts Medical School
University of Miami

# Remaining Project Work

## Year 2:

- Task 5.0: Optimization of Airflow Management System
  - Implementing and validating the ISAT-FFD models for data center airflow management
  - Demonstration at two partner data centers
- Task 6.0: Technology-to-Market Strategy & Commercialization Plan: Phase 2

## Year 3:

- Task 7.0: Simultaneous Optimization of Data Center Cooling
  - Implementing and validating the Modelica-ISAT-FFD models for data center airflow management
  - Demonstration at two partner data centers
- Task 8.0: Technology-to-Market Strategy & Commercialization Plan: Phase 3



---

# Thank You

**University of Colorado Boulder  
Schneider Electric  
Lawrence Berkeley National Laboratory**

**Wangda Zuo, Associate Professor  
Wangda.Zuo@Colorado.edu**

# Reference

1. S. Huang, W. Zuo, M. D. Sohn 2016. “Amelioration of the Cooling Load Based Chiller Sequencing Control.” *Applied Energy*, 168, pp. 204-215.
2. W. Zuo, M. Wetter, W. Tian, D. Li, M. Jin, Q. Chen 2016. “Coupling Indoor Airflow, HVAC, Control and Building Envelope Heat Transfer in the Modelica Buildings Library.” *Journal of Building Performance Simulation*, 9(4), pp. 366-381.
3. W. Zuo, Q. Chen 2009. “Real-Time or Faster-Than-Real-Time Simulation of Airflow in Buildings.” *Indoor Air*, 19 (1), pp. 33-44.
4. W. Tian, T. A. Sevilla, D. Li, W. Zuo, M. Wetter 2018. “Fast and Self-Learning Indoor Airflow Simulation Based on In Situ Adaptive Tabulation.” *Journal of Building Performance Simulation*, 11(1), pp. 99-112.
5. M. Wetter, W. Zuo, T. S. Noudui, X. Pang 2014. “Modelica Buildings Library.” *Journal of Building Performance Simulation*, 7(4), pp. 253-270.
6. M. Wetter 2011. “Co-simulation of building energy and control systems with the Building Controls Virtual Test Bed”. *Journal of Building Performance Simulation*, 4(3): p. 185-203.
7. M. Wetter 2003. GenOpt (R), “Generic Optimization Program”, User Manual, Version 2.0. 0.
8. J.W. VanGilder, R.R. Schmidt 2005. “Airflow uniformity through perforated tiles in a raised-floor data center”. in *ASME 2005 Pacific Rim Technical Conference and Exhibition on Integration and Packaging of MEMS, NEMS, and Electronic Systems collocated with the ASME 2005 Heat Transfer Summer Conference*. American Society of Mechanical Engineers.
9. X. Zhang, J.W. VanGilder, M. Iyengar, R.R. Schmidt 2008. “Effect of rack modeling detail on the numerical results of a data center test cell”. in *Thermal and Thermomechanical Phenomena in Electronic Systems, 2008. ITherm 2008. 11th Intersociety Conference on. IEEE*.

# Reference

10. L.M. Billet, C.M. Healey, J.W. VanGilder, Z.M. Pardey 2015. “Data Center Cooling Efficiency With Simulation-Based Optimization”. in *ASME 2015 International Technical Conference and Exhibition on Packaging and Integration of Electronic and Photonic Microsystems collocated with the ASME 2015 13th International Conference on Nanochannels, Microchannels, and Minichannels*. American Society of Mechanical Engineers.
11. K. Ebrahimi, G.F. Jones, A.S. Fleischer 2014. “A review of data center cooling technology, operating conditions and the corresponding low-grade waste heat recovery opportunities”. *Renewable and Sustainable Energy Reviews*, 31: p. 622-638.
12. Y. Fu, M. Wetter, W. Zuo 2018, “Modelica Models for Data Center Cooling Systems: Chilled Water System with Integrated and Nonintegrated WSEs”, submitted to *2018 Building Performance Analysis Conference and SimBuild co-organized by ASHRAE and IBPSA-USA*. Chicago, IL.
13. W. Zuo 2016. “Advanced Modeling Tools for Energy Efficient Data Center Cooling.” Presentation at *ASHRAE TC9.9 Data Center Energy Calculation Work Group*, Webinar, December 3.
14. Y. Fu, W. Zuo, M. Wetter, J.W. VanGilder 2017. “Improving Data Center Energy Efficiency through End-To-End Cooling Modeling and Optimization.” Presentation at *ASHRAE TC9.9 Data Center Energy Calculation Work Group*, Long Beach, CA, June 25.
15. W. Zuo, Y. Fu, M. Wetter, J.W. VanGilder 2017. “Improving Data Center Energy Efficiency through End-to-End Cooling Modeling and Optimization”. Presentation at *ASHRAE TC9.9 Data Center Energy Calculation Work Group*, Webinar, December 8.
16. W. Tian, X. Han, W. Zuo, M.D. Sohn 2018. “Building Energy Simulation Coupled with CFD for Indoor Environment: A Critical Review and Recent Applications”. *Energy and Buildings*, 165, pp.184-199.
17. W. Tian, T.A. Sevilla, W. Zuo, M.D. Sohn 2017. “Coupling fast fluid dynamics and multizone airflow models in Modelica Buildings library to simulate the dynamics of HVAC systems”. *Building and Environment*, 122, pp.269-286.

# Reference

18. W. Tian, W. Zuo, T. A. Sevilla, M. Sohn 2017. “Coupled Simulation between CFD and Multizone Models Based on Modelica Buildings Library to Study Indoor Environment Control.” *Proceedings of the 12th International Modelica Conference*, pp. 55-61, May 15-17, Prague, Czech Republic.
19. W. Tian, W.J. VanGilder, X. Han, M.H. Healey, B.M. Condor, W. Zuo 2018. “Fast Fluid Dynamics Modeling of Data-Center Floor Plenums”, abstract submitted to *ASHRAE Annual Conference 2019*.
20. W. Zuo 2016. “From Buildings to Cities: Research and Development of Modelica-Based Technique for Real-World Applications.” Seminar at Energy Technologies Area (ETA), Lawrence Berkeley National Laboratory, Berkeley, CA, November 14.
21. W. Tian, T. A. Sevilla, W. Zuo 2017. “A Systematic Evaluation of Accelerating Indoor Airflow Simulations Using Cross Platform Parallel Computing.” *Journal of Building Performance Simulation*, 10(3), pp. 243-255.
22. VanGilder, J. 2016, “Faster and Simpler CFD for Data Center Applications”, Presented at ASHRAE Winter Conference, Orlando, Florida.

# Project Budget

**Project Budget:** \$522,460 (DOE), \$92,168 (Cost Share)

**Variiances:** PI transferred from the University of Miami to the University of Colorado Boulder in 8/2017. New contract with University of Colorado Boulder is under progress. Thus, spending during the transitional period is not reflected yet.

**Cost to Date:**

## Budget History

9/2016– FY 2017 (past)		FY 2018 (current)		FY 2019 – 11/2019 (planned)	
DOE	Cost-share	DOE	Cost-share	DOE	Cost-share
\$87,141	\$28,279	\$250,609	\$36,997	\$184,710	\$26,922

# Progress

FY2017 focuses on implementation, demonstration and release of software feature 1  
 FY2018 focuses on implementation, demonstration and release of software feature 2  
 FY2019 focuses on implementation, demonstration and release of software feature 3

Project Schedule													
Project Start: Oct. 1, 2016	Completed Work												
Project End: Nov. 30, 2019	Active Task (in progress work)												
	Milestone/Deliverable (Originally Planned)												
	Milestone/Deliverable (Actual)												
	FY2017				FY2018				FY2019				
Task	Q1 (Oct-Dec)	Q2 (Jan-Mar)	Q3 (Apr-Jun)	Q4 (Jul-Sep)	Q1 (Oct-Dec)	Q2 (Jan-Mar)	Q3 (Apr-Jun)	Q4 (Jul-Sep)	Q1 (Oct-Dec)	Q2 (Jan-Mar)	Q3 (Apr-Jun)	Q4 (Jul-Sep)	Q5 (Oct-Dec)
<b>Past Work</b>													
Task 1.0: Optimization of Data Center Cooling System Operation		◆		◆									
Task 2.0: Technology-to-Market Strategy & Commercialization Plan: Phase 1	◆			◆									
Task 3.0: Assessment of Airflow Management for the First Partner Data Center			◆										
Task 4.0: Release the Modelica Models and Demonstrate Software Feature 1					◆	◆							
<b>Current/Future Work</b>													
Task 3.5: Intellectual Property Management Plan (IPMP)							◆						
Task 5.0: Optimization of Airflow Management System						◆							
Task 6.0: Technology-to-Market Strategy & Commercialization Plan: Phase 2						◆							
Task 7.0: Simultaneous Optimization of Data Center Cooling													
Task 8.0: Technology-to-Market Strategy & Commercialization Plan: Phase 3													