

REUSE, REBUILD, RETURN



Lauren Maloney, Meghan Miller, Miranda Osborn, and Katie Woodward
Ball State University Urban Single Family Competition

COMMUNITY PARTNERS



MUNCIE
MISSION

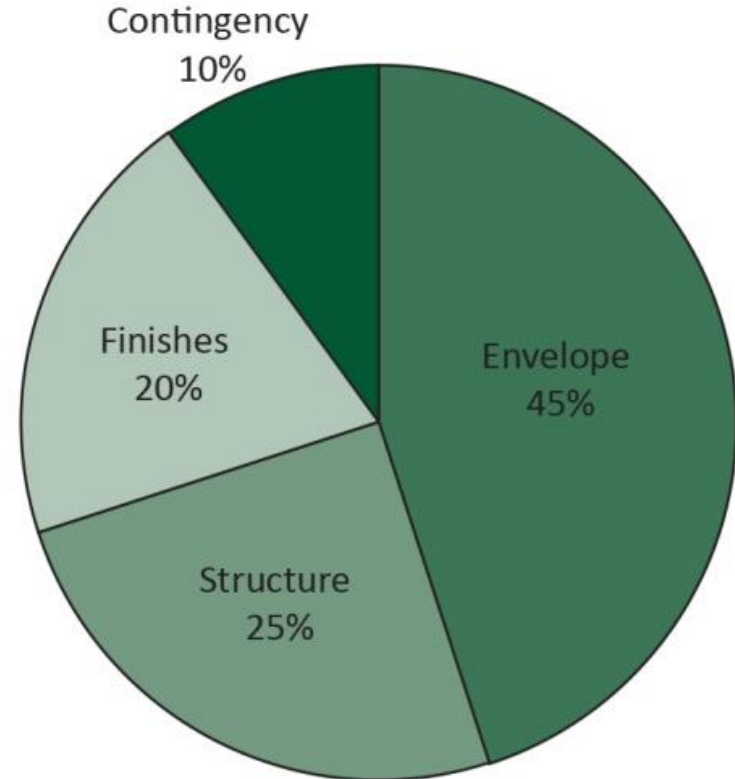
Ministries, Inc.



ecoREHAB

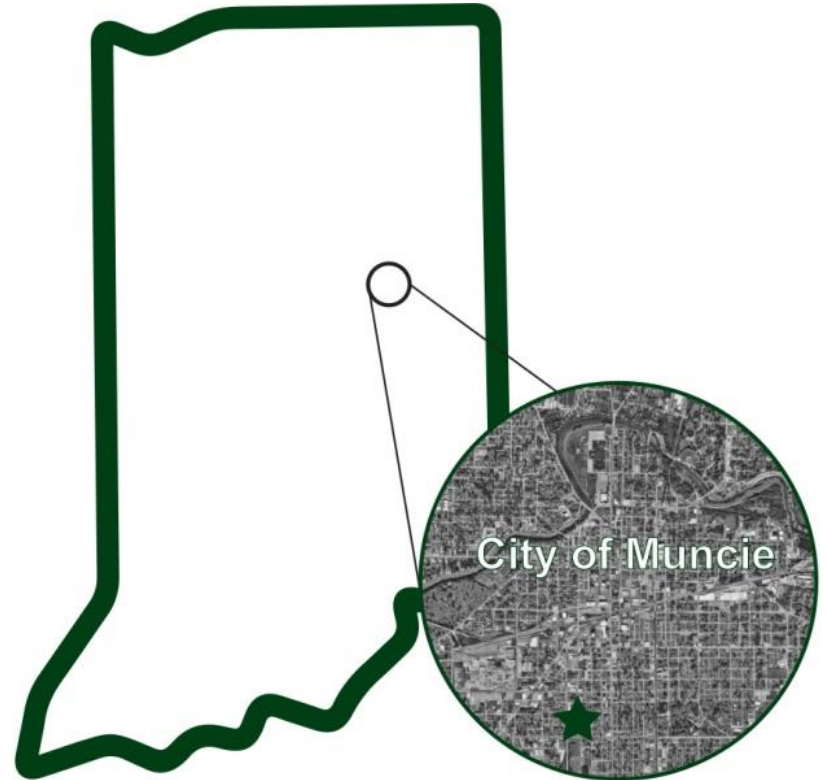
PRELIMINARY BUDGET

- \$93,000 TOTAL
- ESTIMATED \$7,000 FOR ACQUISITION
- 10% CONTINGENCY
- BUDGET BASED ON PREVIOUS
ecoREHAB PROJECTS

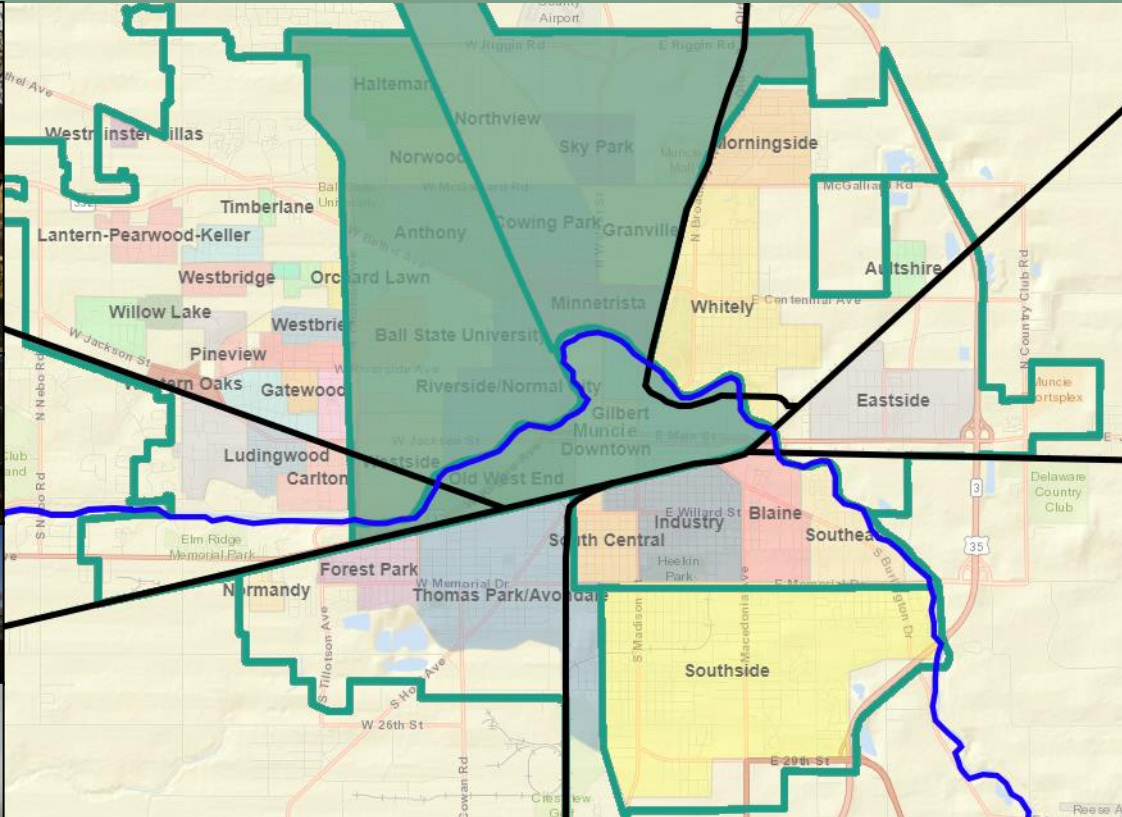


MUNCIE, IN

- FOUNDED IN 1865
- GAS BOOM 1880'S-1910
- POPULATION QUADRUPLED
- INDUSTRY LEFT BY 1960'S
- RUST BELT CITY



PRESERVATION EFFORTS

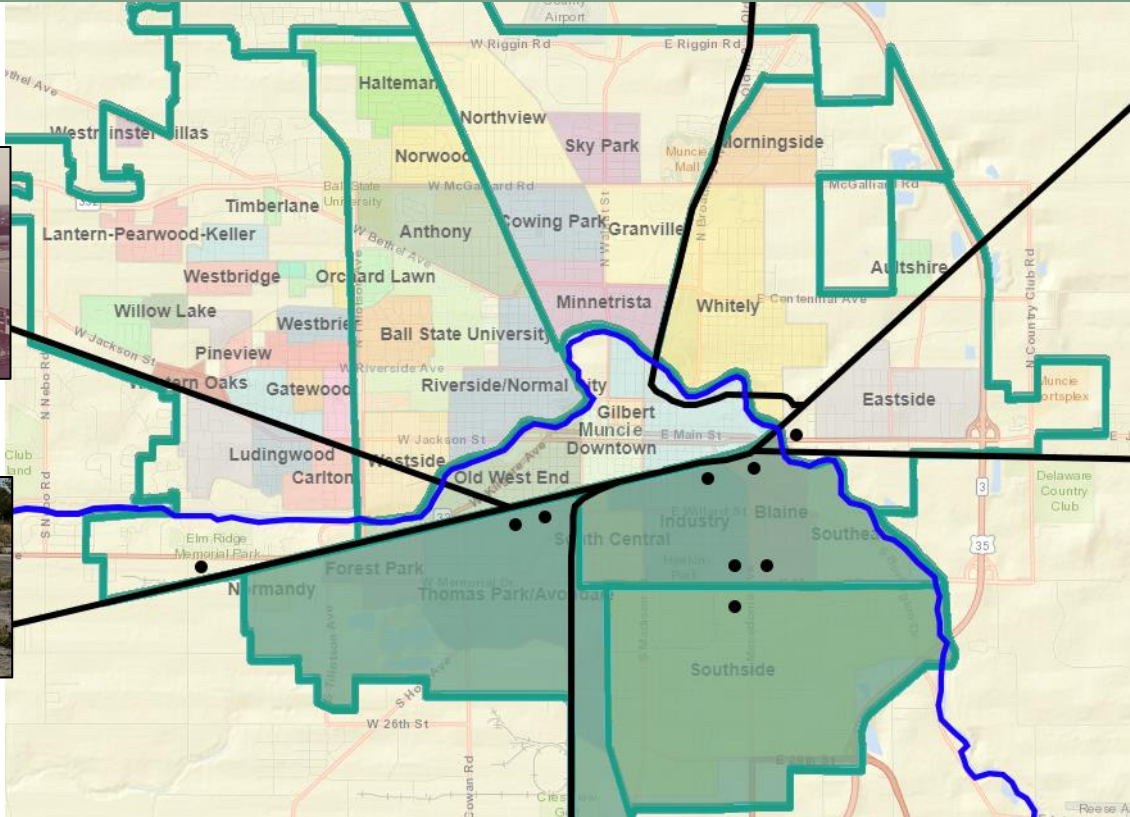


FORGOTTEN

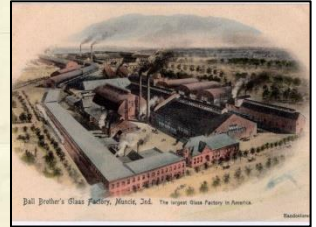
THEN



NOW



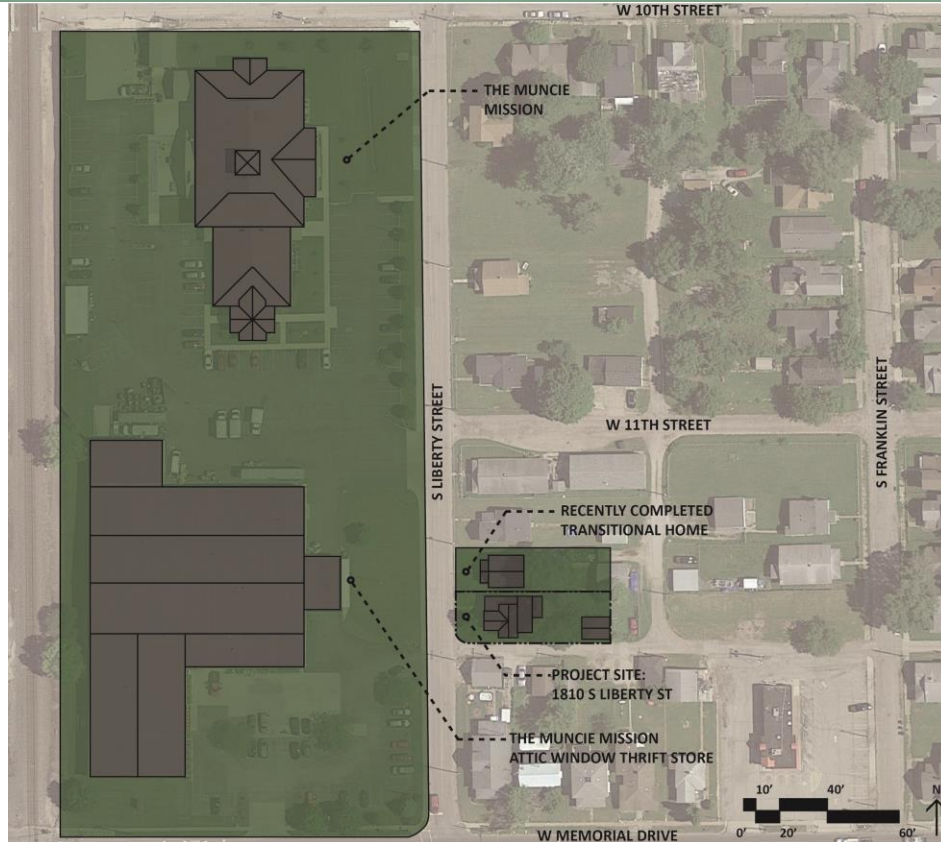
THEN



NOW



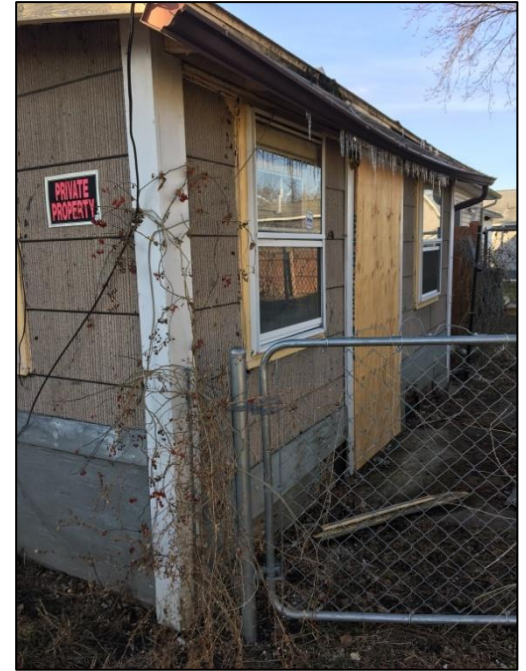
SITE: NEIGHBORHOOD



SITE: 1810 S. LIBERTY STREET



SITE CONDITIONS



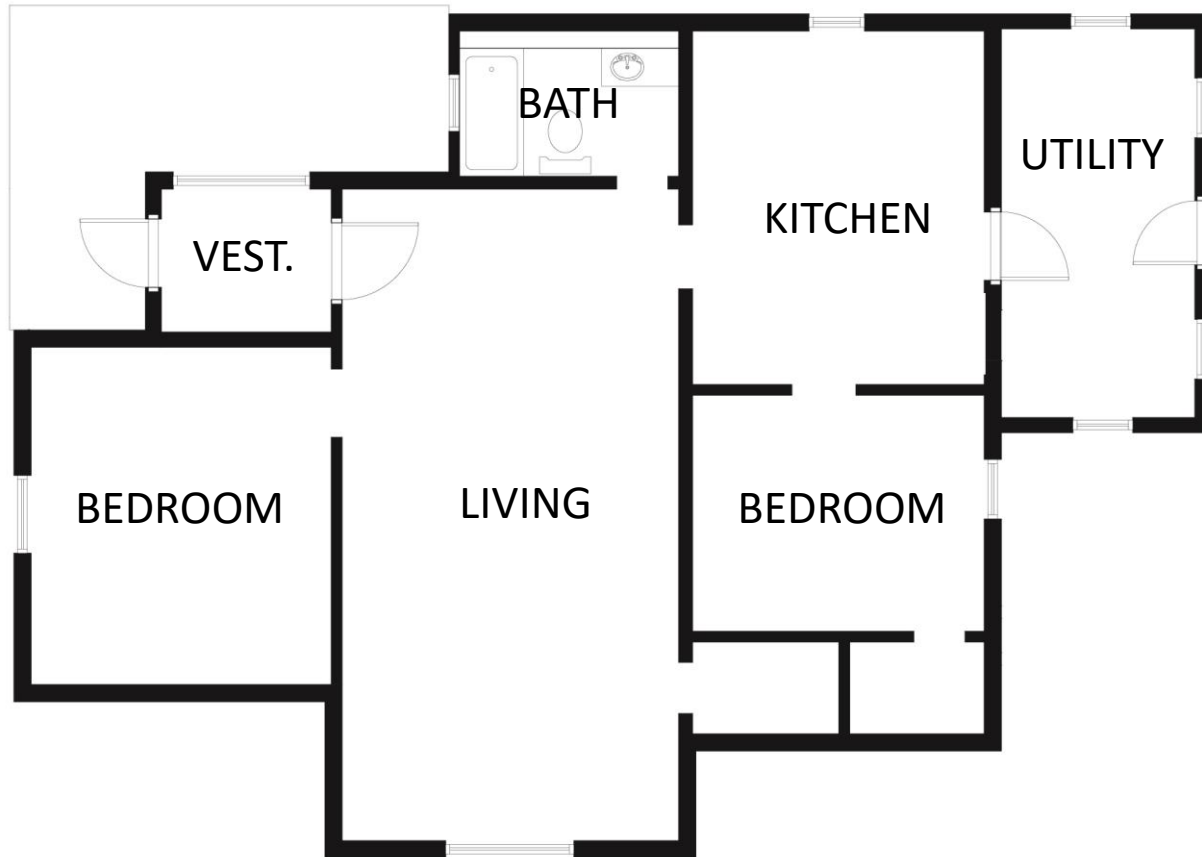
SITE CONDITIONS



OCCUPANT CHARACTERISTICS

- 2 ADULT MALES
- 1-3 YEAR DURATION
- MOST INSTITUTIONALIZED FOR THE MAJORITY OF THEIR LIVES
- TRANSITIONAL HOUSING
- RECENT GRADUATES OF MUNCIE MISSION'S REHABILITATION PROGRAMS
- TENANTS WILL PAY A SMALL PROGRAM FEE AS WELL AS UTILITIES

EXISTING FLOOR PLAN



FLOOR PLAN EVOLUTION



FINAL FLOOR PLAN DESIGN



DESIGN GOALS

REUSE

AS MANY MATERIALS
AS POSSIBLE TO SAVE
MONEY, ENERGY, AND
CARBON.

REBUILD

NEIGHBOHOOD
STARTING WITH
HOME. REBUILD
LIVES.

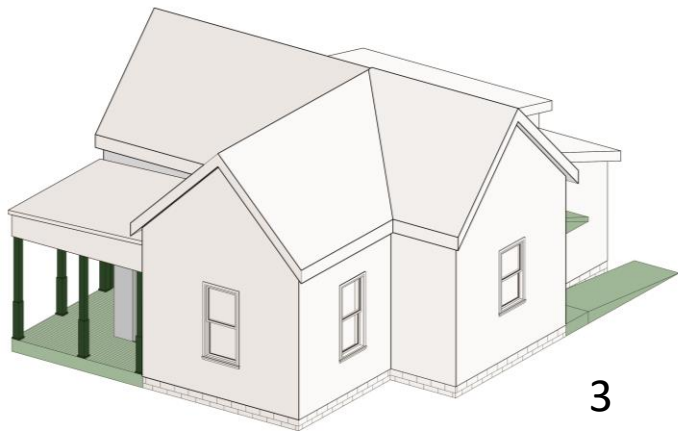
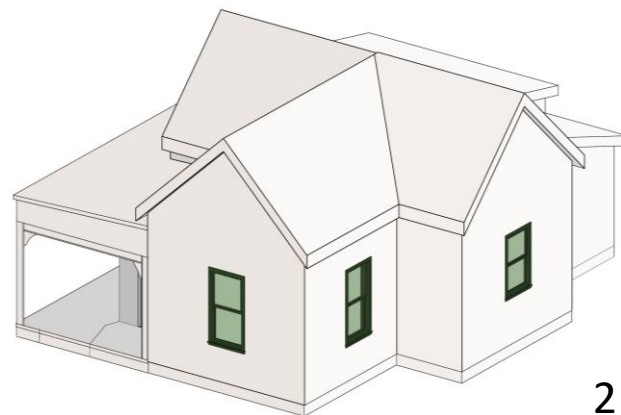
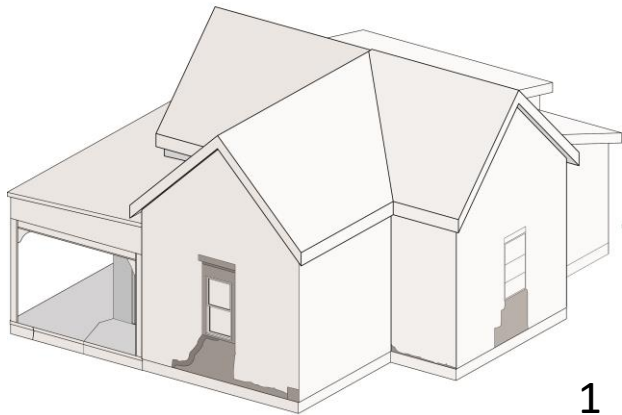
RETURN

HOME TO ORIGINAL
AESTHETIC. RETURN
GRADUATES TO
SOCIETY.

PILOT HOME

- NUMEROUS EXAMPLES OF THIS TYPOLOGY
- MUNCIE MISSION WOULD LIKE TO BUY HOUSES
SURROUNDING FACILITY FOR TRANSITIONAL HOUSING
- ADAPT OUR SCHEME TO CREATE HIGH PERFORMANCE
HOMES

ARCHITECTURAL DESIGN



EXTERIORS



EXTERIORS



INTERIORS



INTERIORS

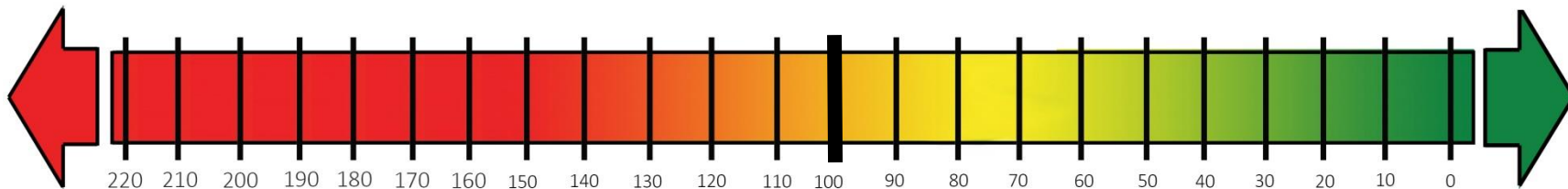


INTERIORS



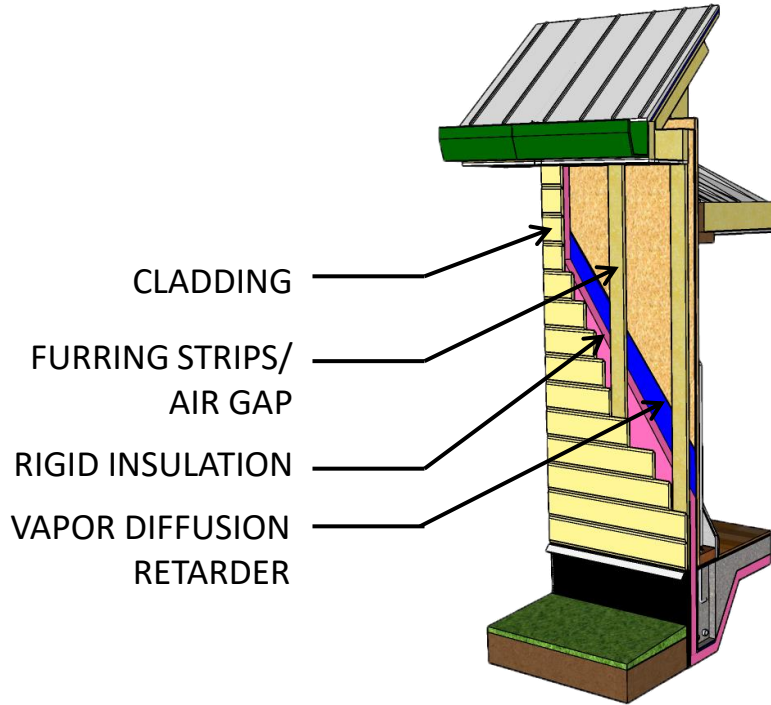
ENERGY ANALYSIS

ENERGY RATING INDEX

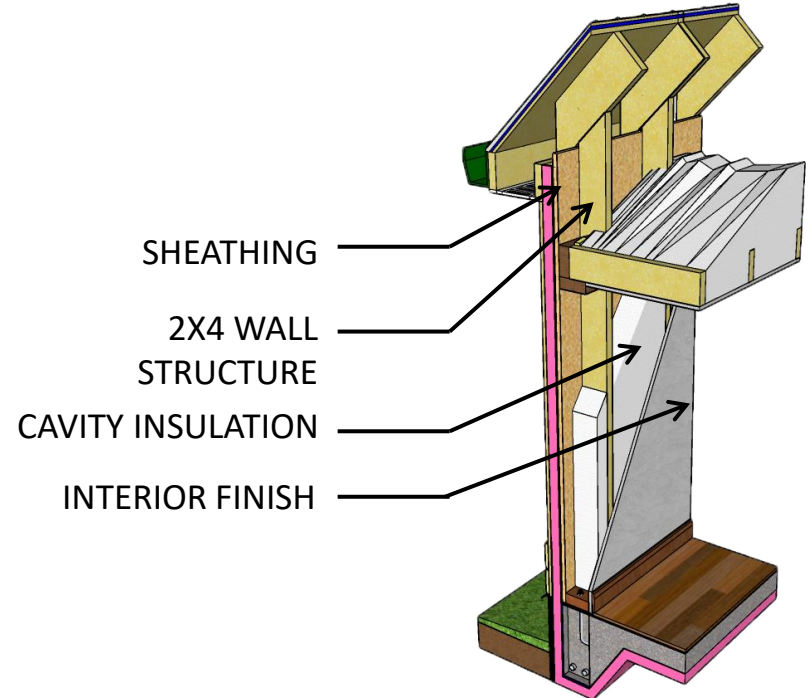


OFFICIAL HERS W/O PV: 54 OFFICIAL HERS W/ PV: -1

CONSTRUCTABILITY



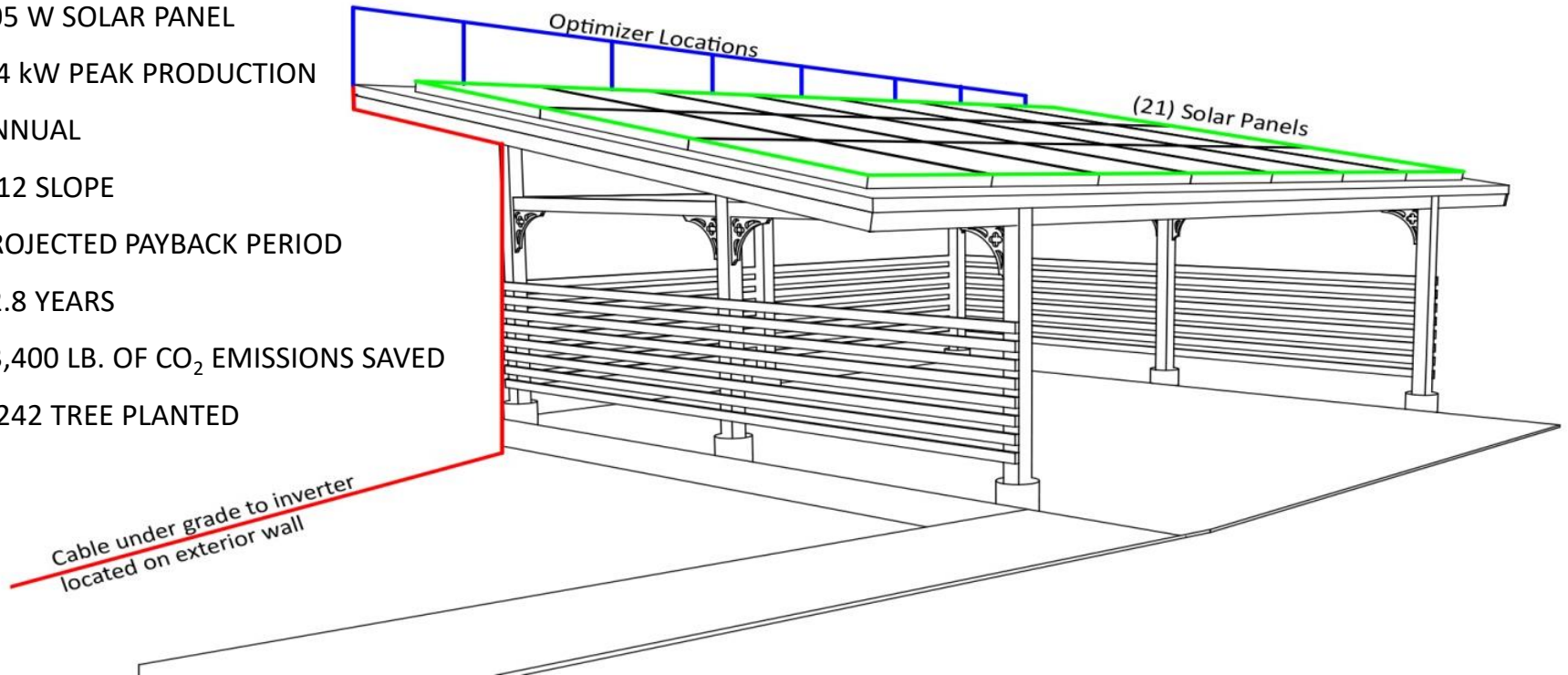
FROM EXTERIOR



FROM INTERIOR

PV SYSTEM

- 305 W SOLAR PANEL
- 6.4 kW PEAK PRODUCTION ANNUAL
- 4:12 SLOPE
- PROJECTED PAYBACK PERIOD 12.8 YEARS
- 13,400 LB. OF CO₂ EMISSIONS SAVED
- 3,242 TREE PLANTED



FINANCIAL ANALYSIS

Construction Cost Summary				
	ecoREHAB Labor		Contractor Labor	
Site Work	\$	12,808	\$	12,842
Foundations	\$	18,719	\$	18,719
Framing	\$	5,681	\$	13,090
Exterior Finishes	\$	10,027	\$	12,684
Major Systems Rough-ins	\$	12,770	\$	12,770
Interior Finishes	\$	19,145	\$	24,654
Final Steps	\$	2,982	\$	5,534
Other	\$	461	\$	461
Total Construction Costs	\$	82,593	\$	100,754

LARGER IMPLICATIONS



PROSPECTIVE TENANTS

