

# NextGeneration BuildingSolutions

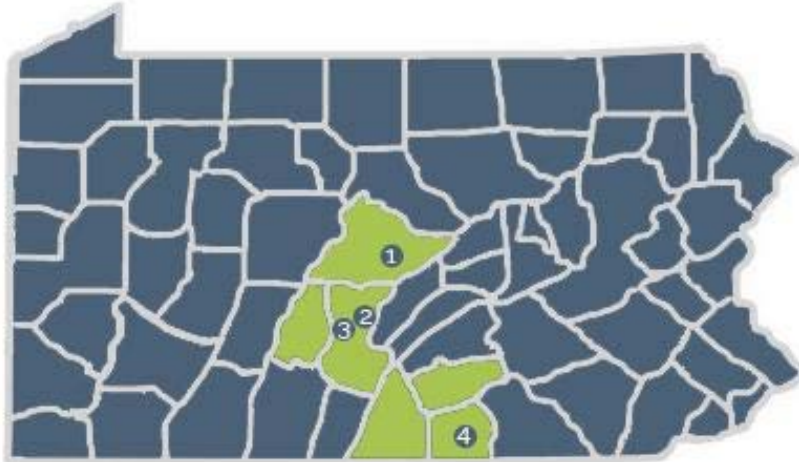
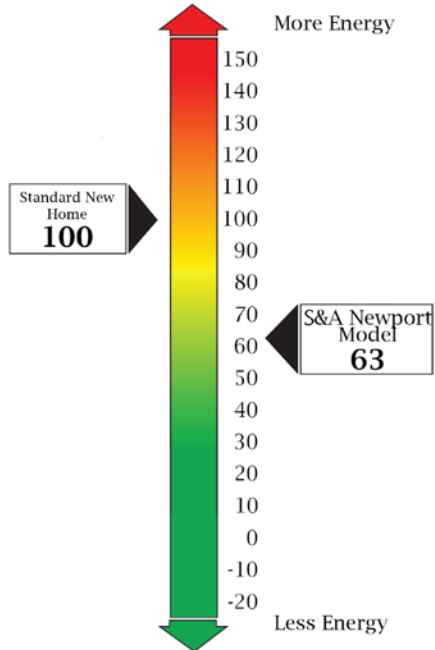








**HERS® Index**





2015 Race to Zero Design



2016 EEHR Design



2018 GreenBuild Duplex Under Construction





Base Dartmouth Model



Base Newport Model



Upgraded Dartmouth Model



Upgraded Newport Model



Design Review with S&A



Design Review with S&A



Site Visit to The Landings

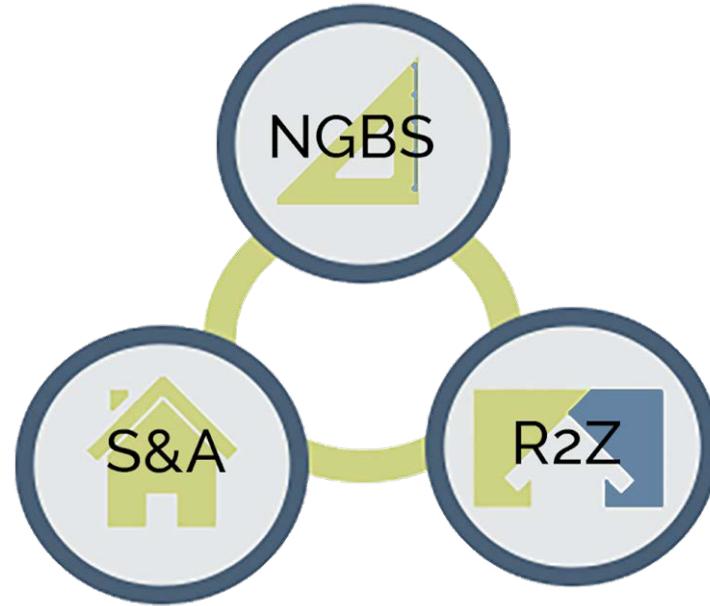


Site Visit to The Landings



## Our Goals:

- Engage with S&A
- Maximize impact
- Integrative Design approach



## S&amp;A's Goals:

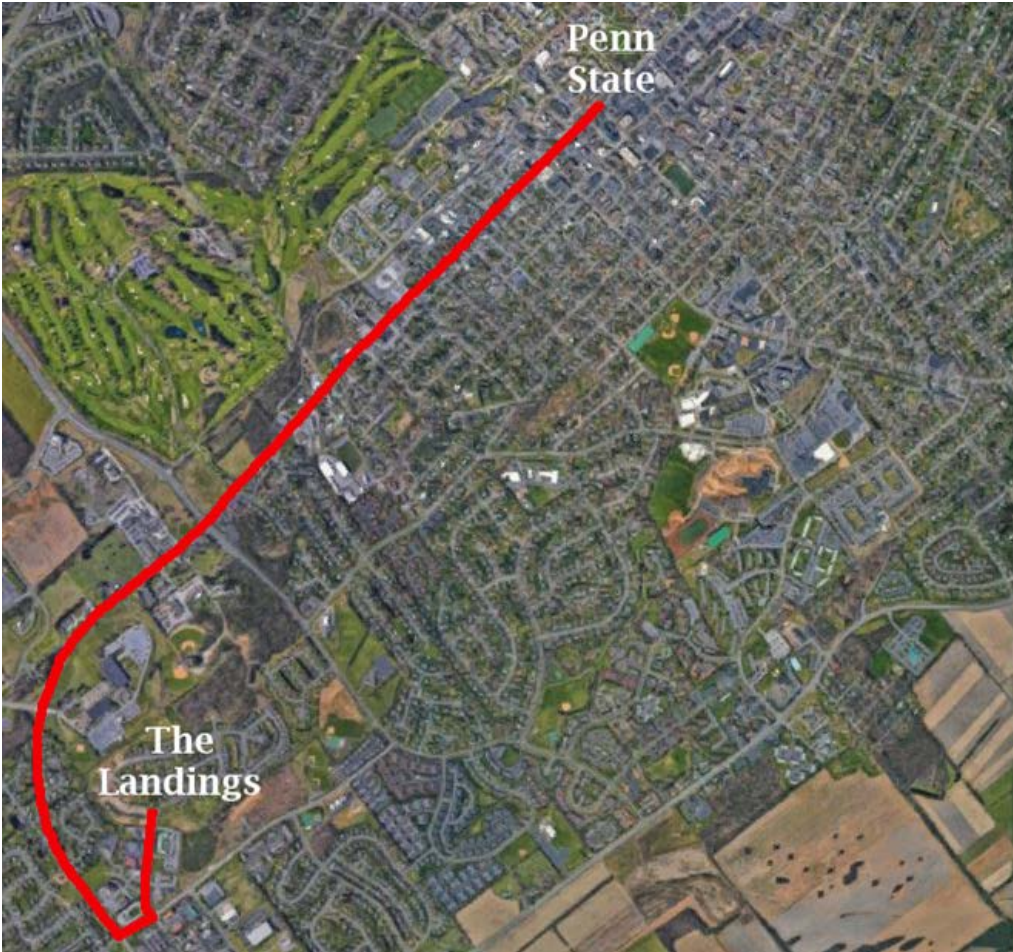
- Readily available materials
- Emphasis on constructibility
- Healthy Homes

Race To Zero  
Requirements:

- Zero Energy Ready Home
- Market Ready
- Affordable

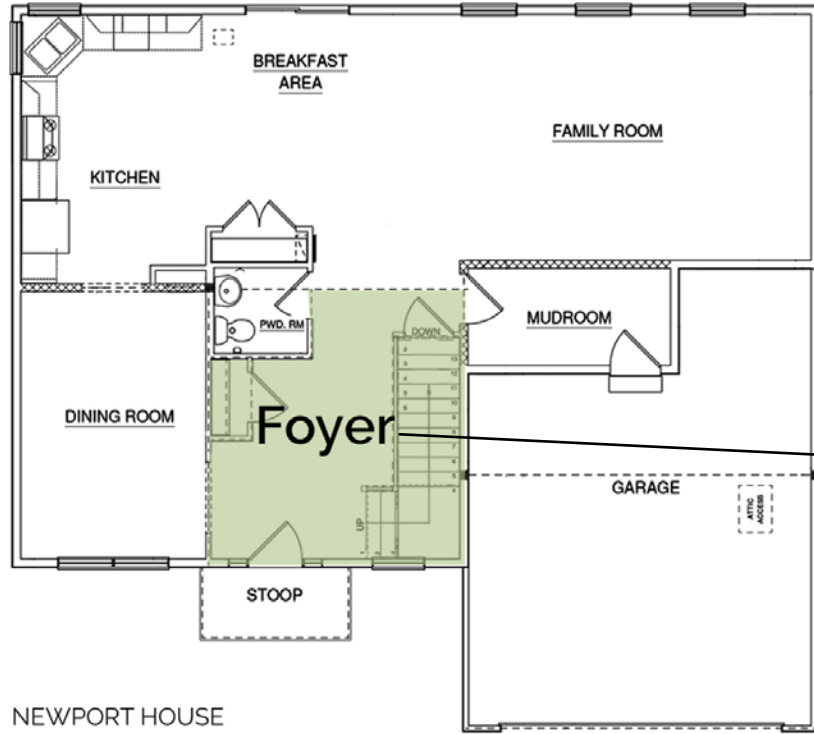




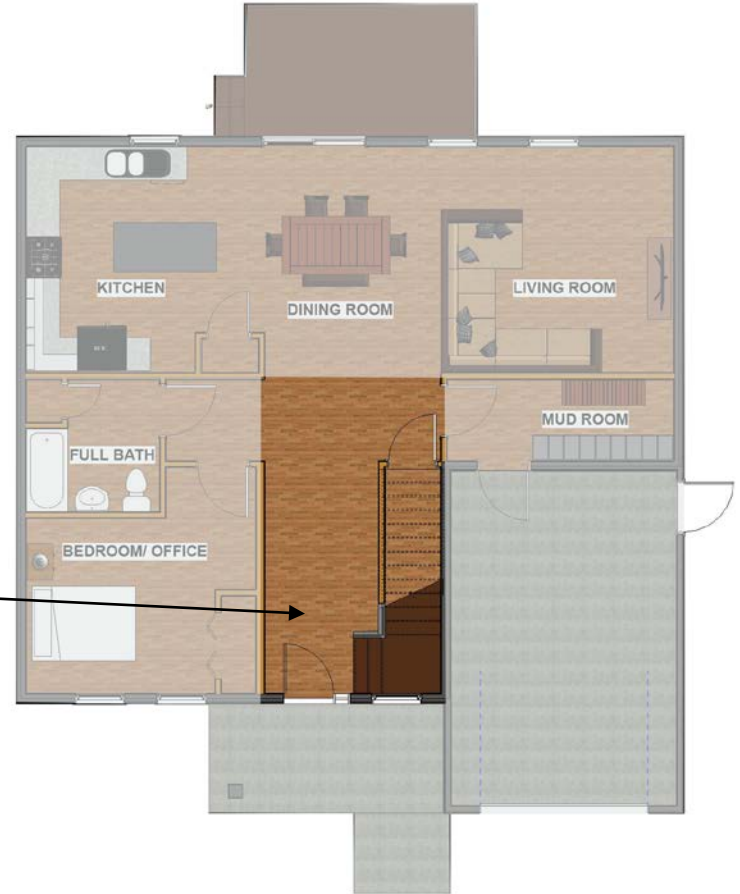


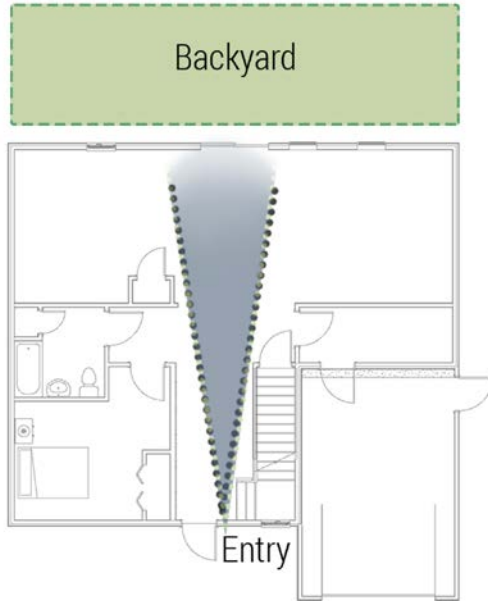




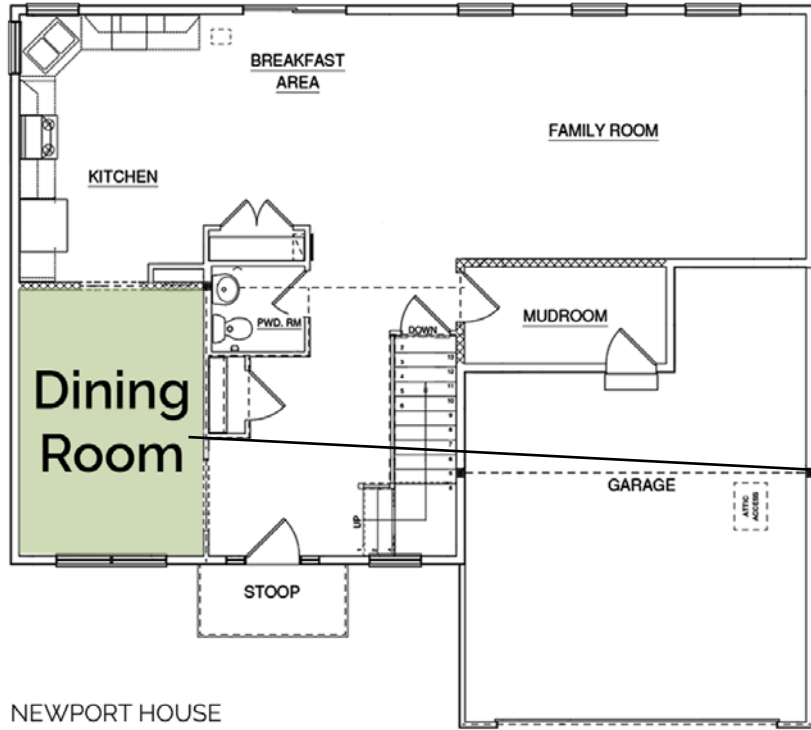


NEWPORT HOUSE



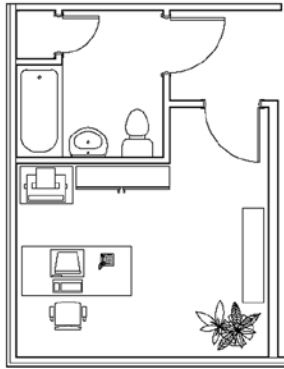




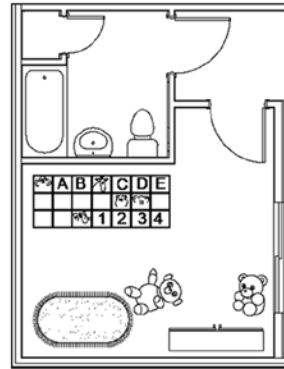


NEWPORT HOUSE

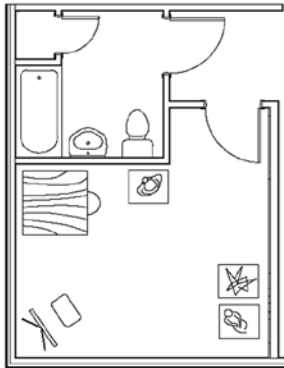




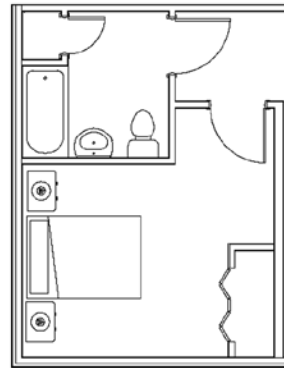
Before Children



Toddlers

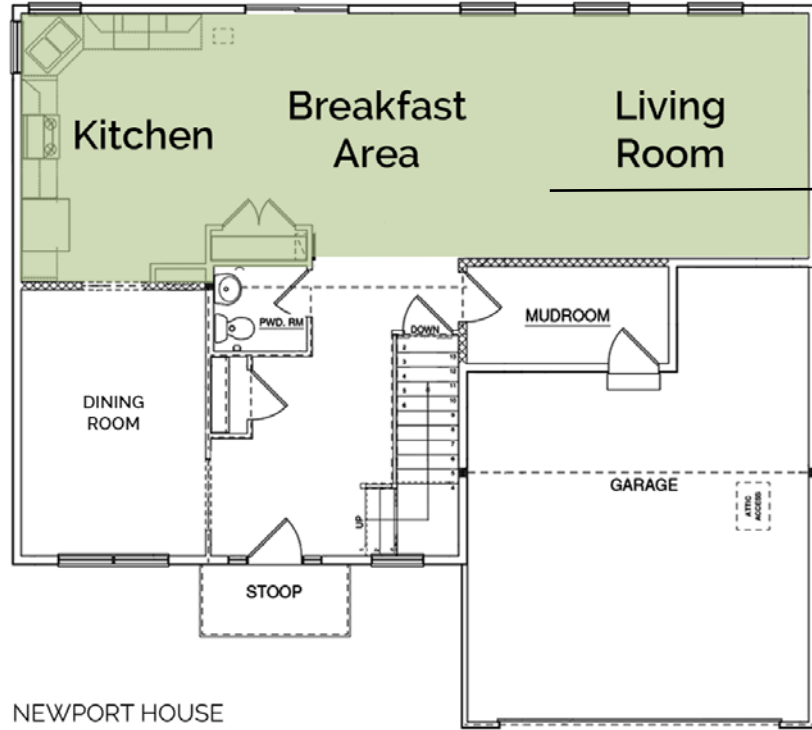


Kids move out



Grandparents move in

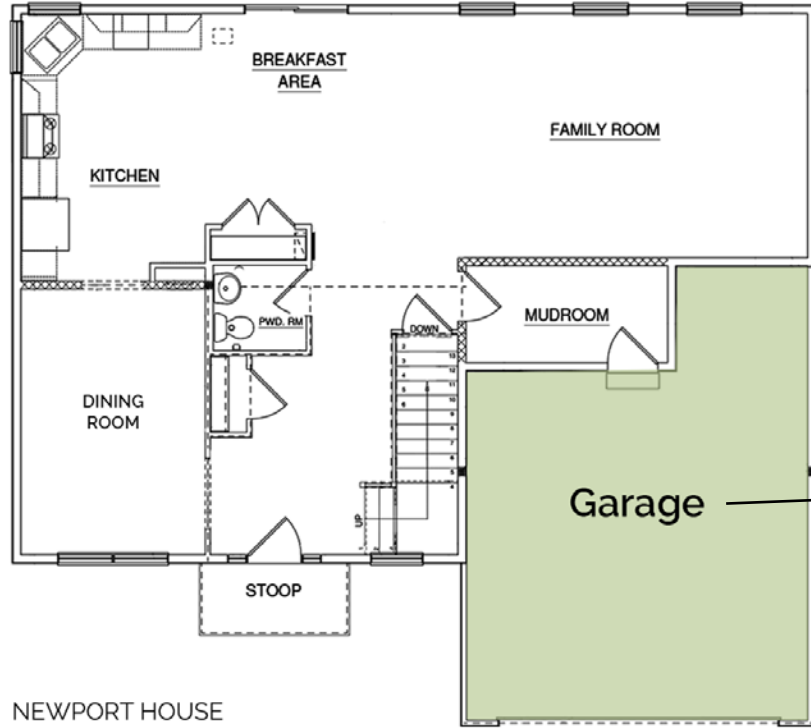




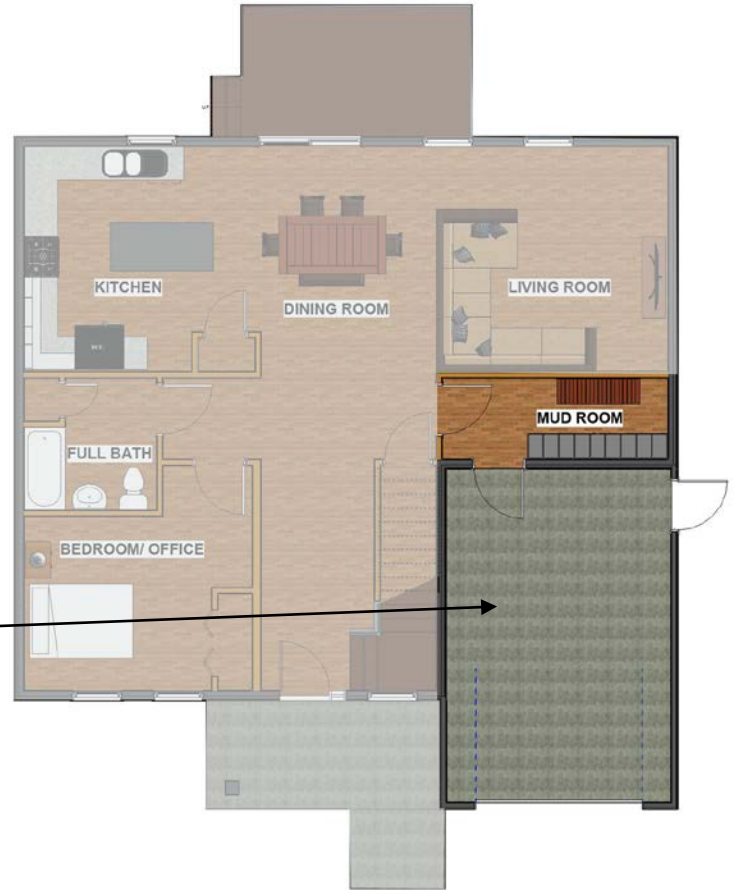
NEWPORT HOUSE





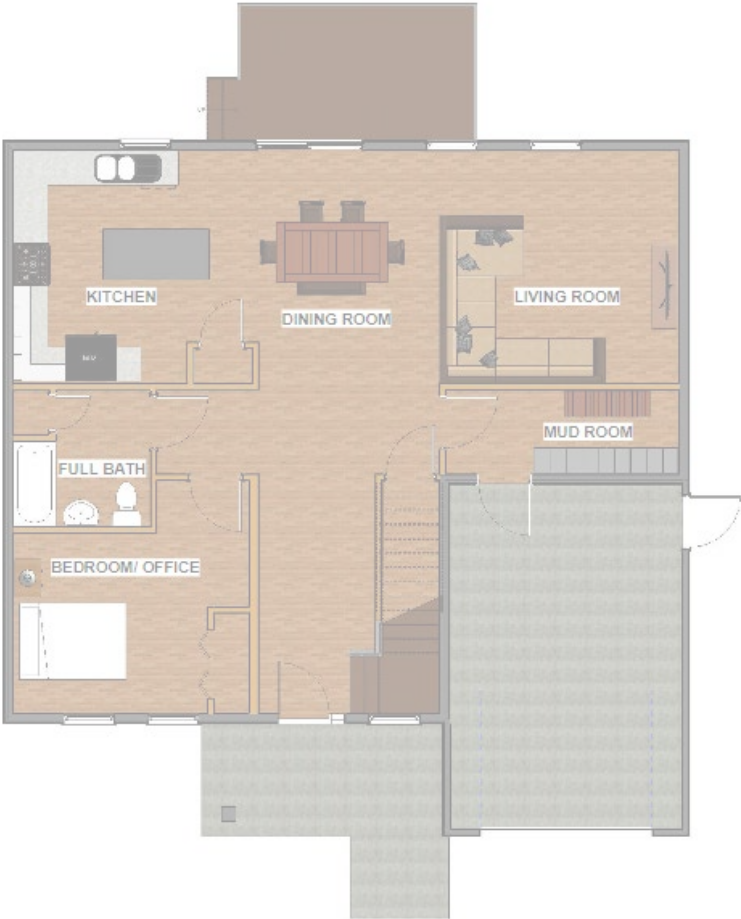


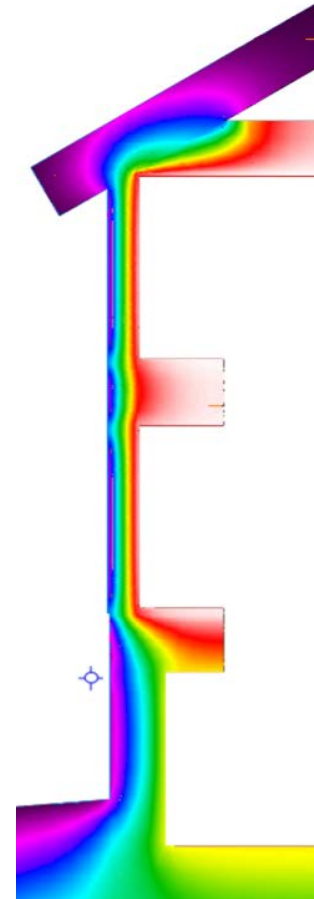
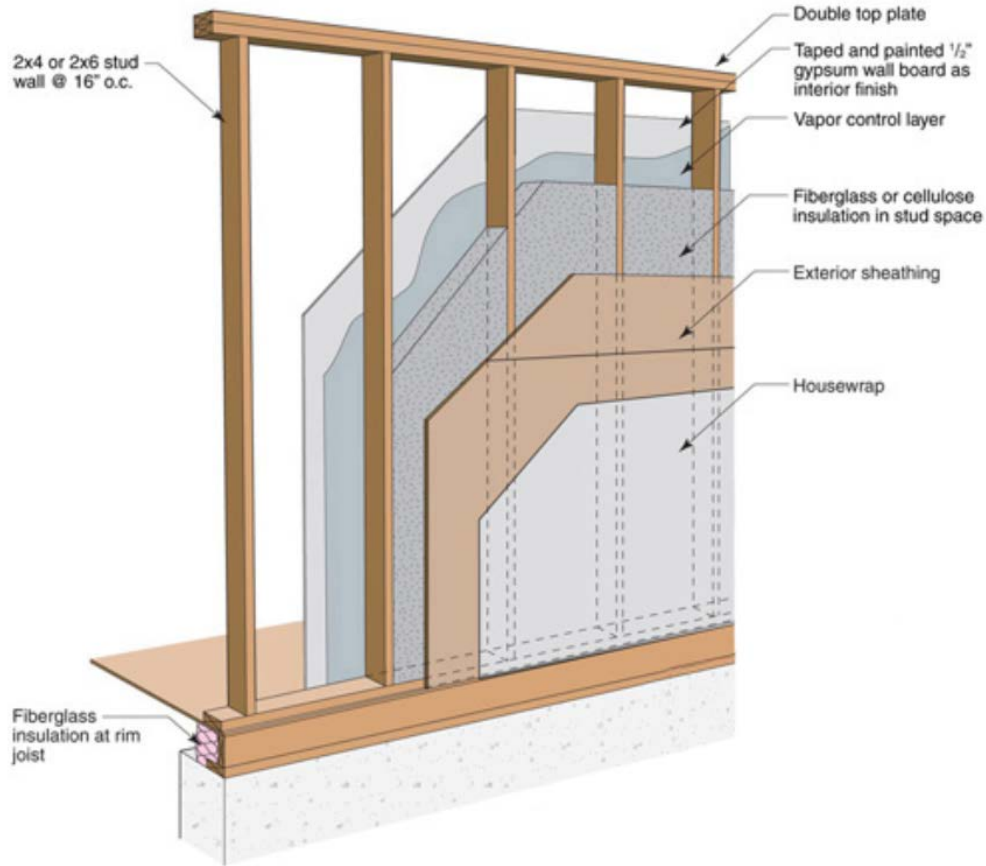
NEWPORT HOUSE









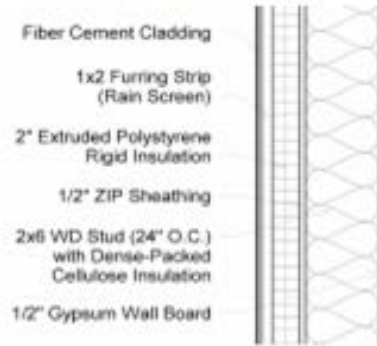




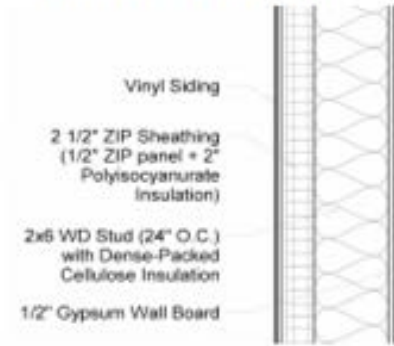
## S&amp;A Standard Wall (R-19)



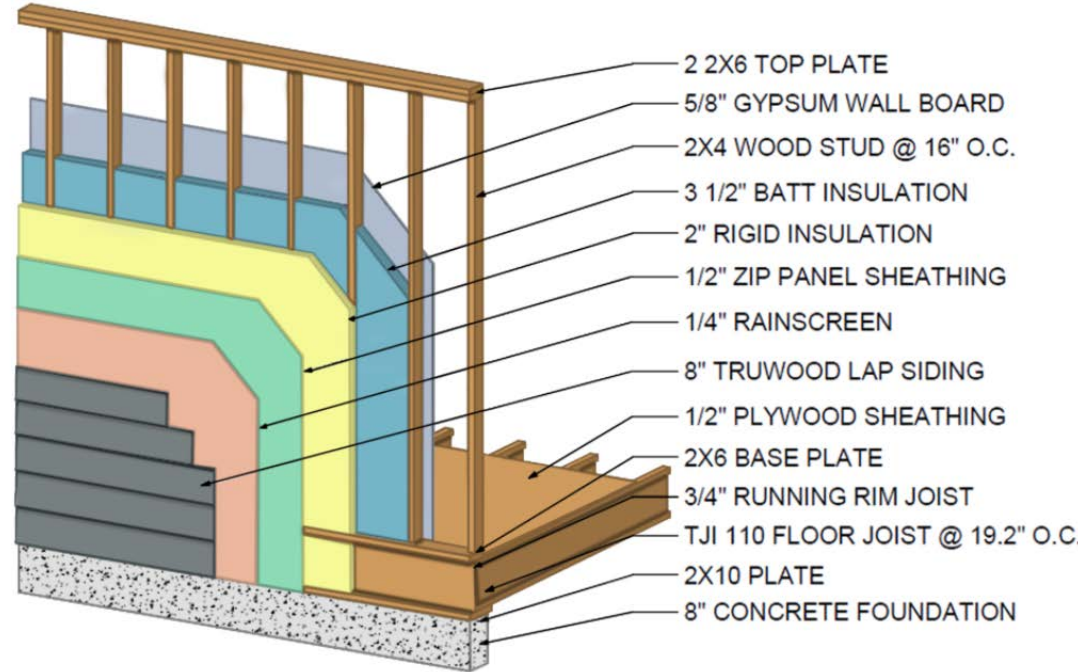
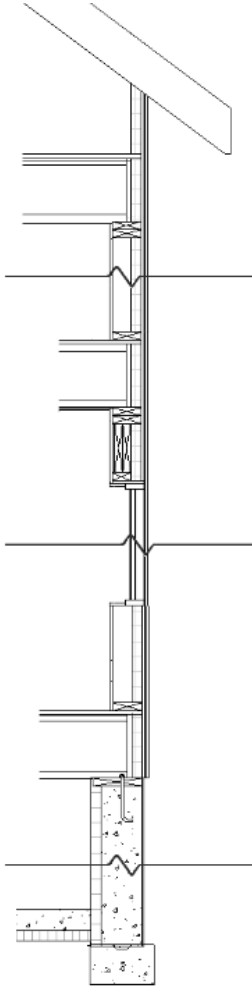
## GreenBuild | EEHR (R-29)



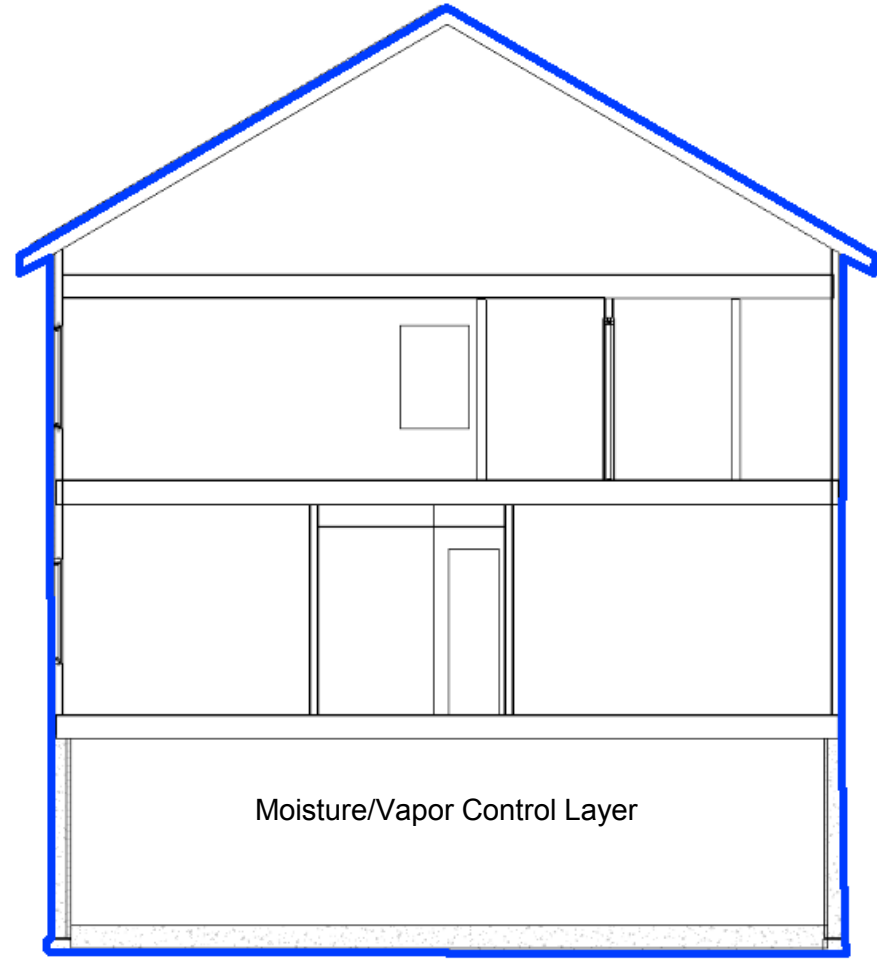
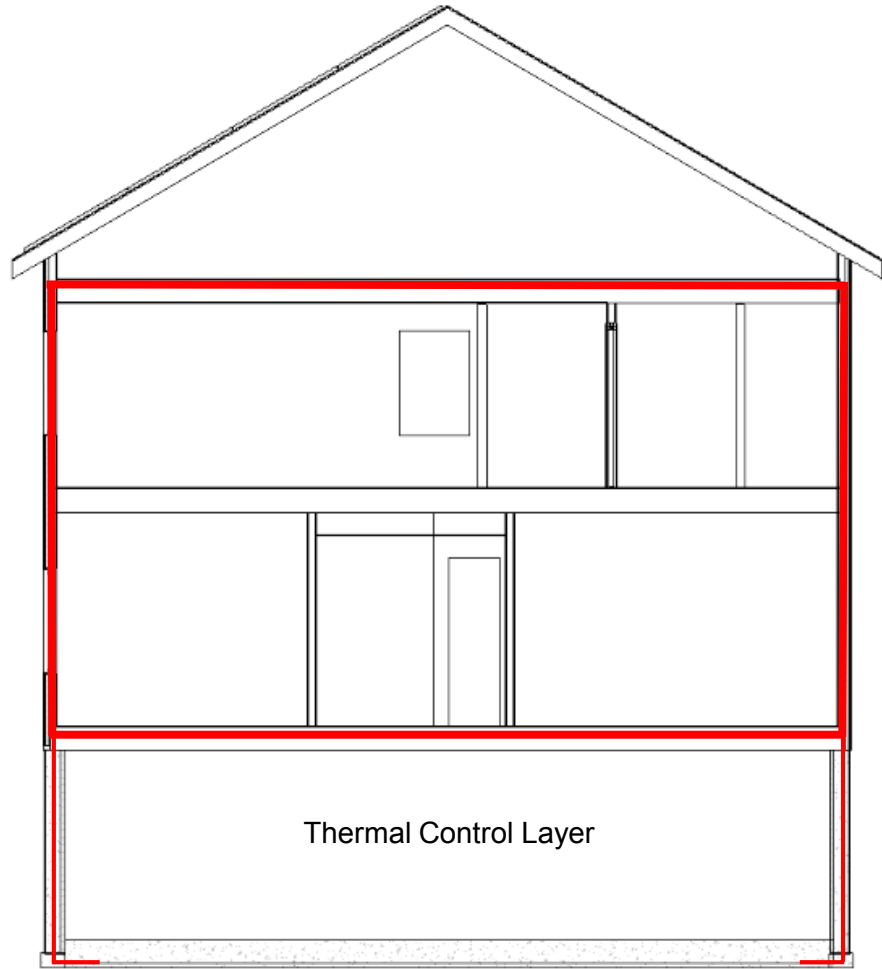
## GreenBuild | Envinity (R-31)



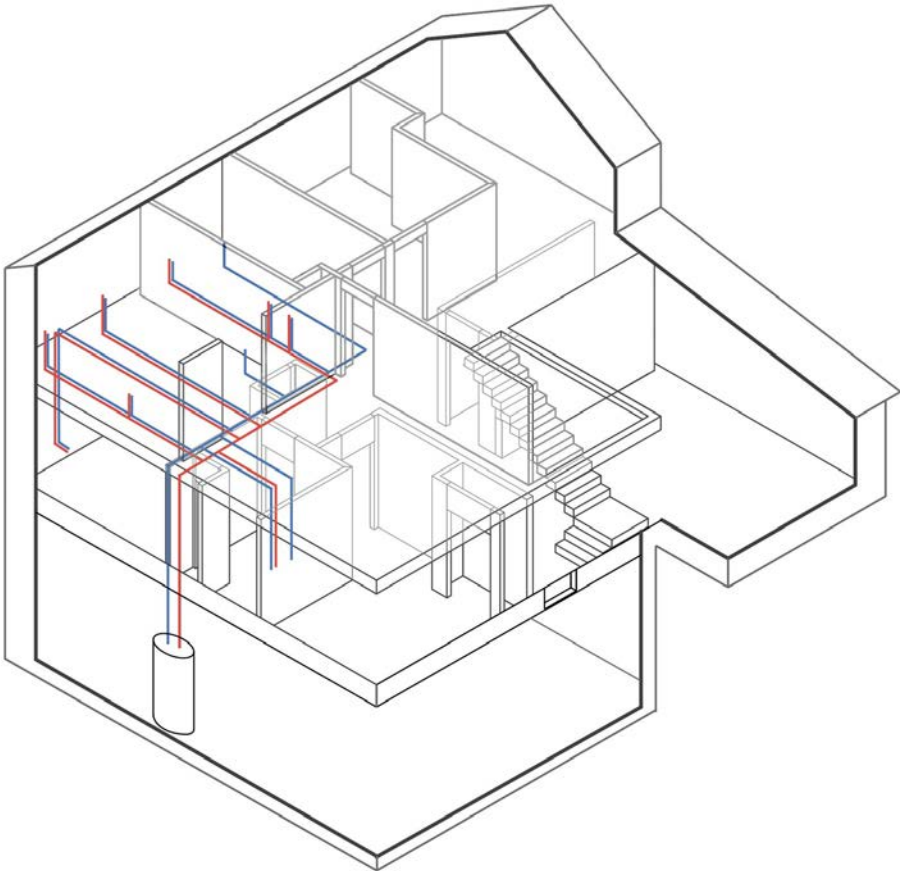
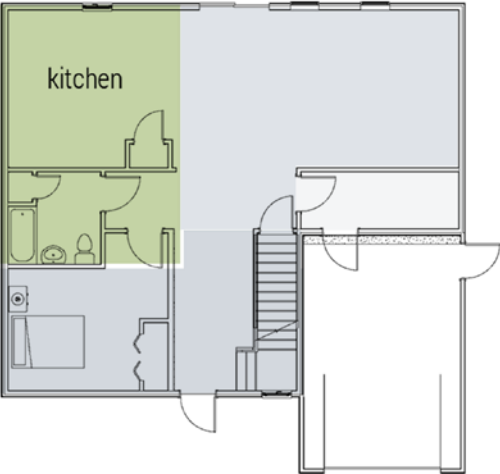
Category	Weighted Score	S&A Current Wall		Spray Foam Wall		EP&B		Modular/Sips		Insulated Zip Panel	
		Raw Score (1-10)	Weighted Score	Raw Score (1-10)	Weighted Score	Raw Score (1-10)	Weighted Score	Raw Score (1-10)	Weighted Score	Raw Score (1-10)	Weighted Score
<b>Price</b>	25	10	25	7.1	17.7	8.4	21.0	6.5	16.3	7.9	19.8
<b>Performance</b>	35	4	14	7	24.5	8	28	8	28	8	28
<b>Simplicity</b>	20	10	20	7	14	8	16	10	20	8	16
<b>Time</b>	7	10	7	8	5.6	7	4.9	10	7	7	4.9
<b>Availability</b>	8	10	8	8	6.4	10	8	4	3.2	6	4.8
<b>Durability/ Maintenance</b>	5	7	5.6	10	8	10	8	8	6.4	10	8
<b>Total</b>	100	<b>79.6</b>		<b>76.2</b>		<b>85.9</b>		<b>80.9</b>		<b>81.5</b>	

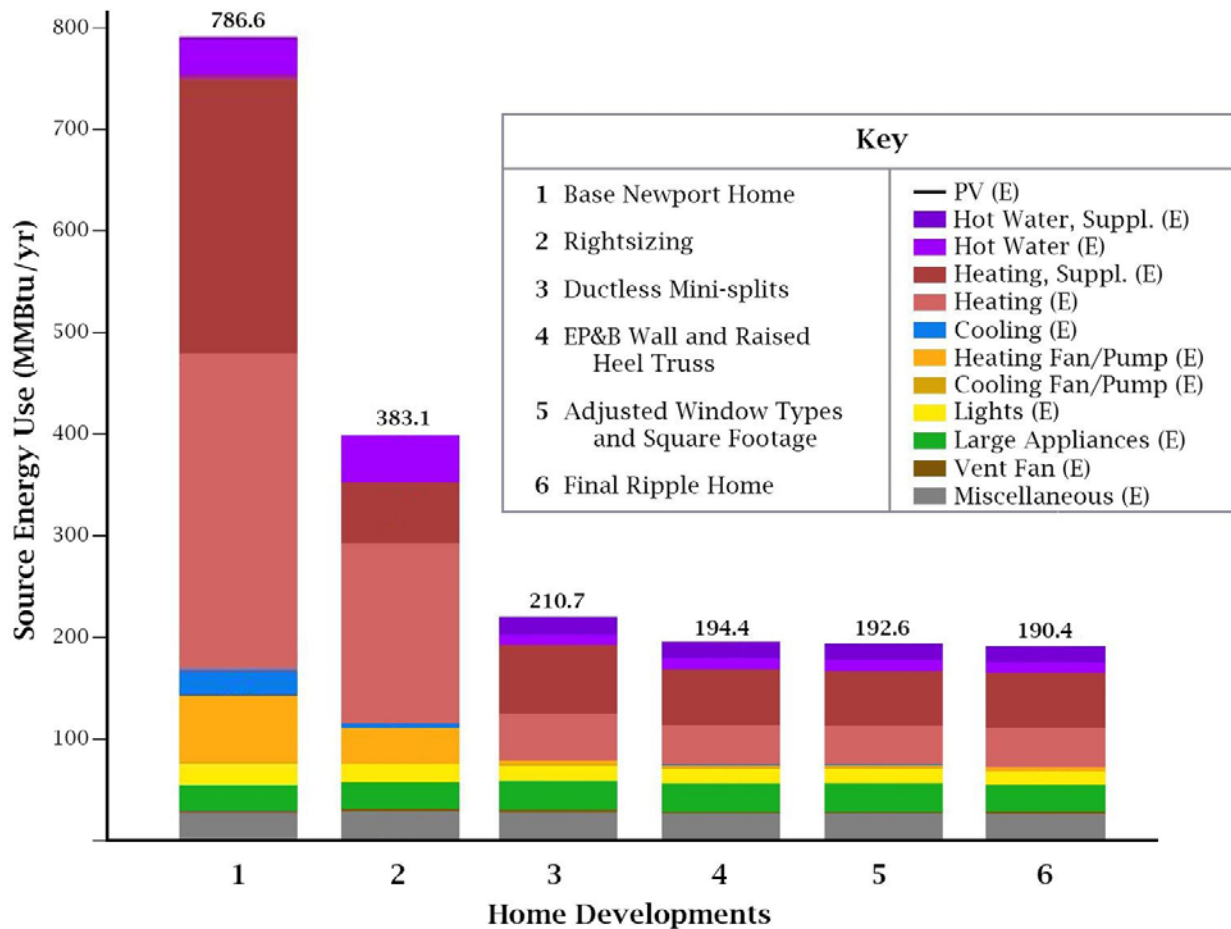






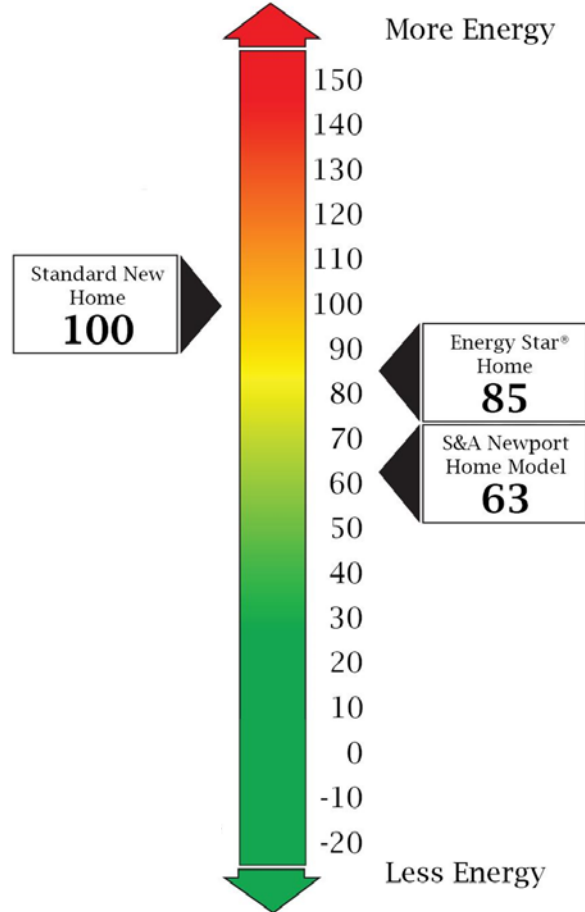
SERVICE CORE

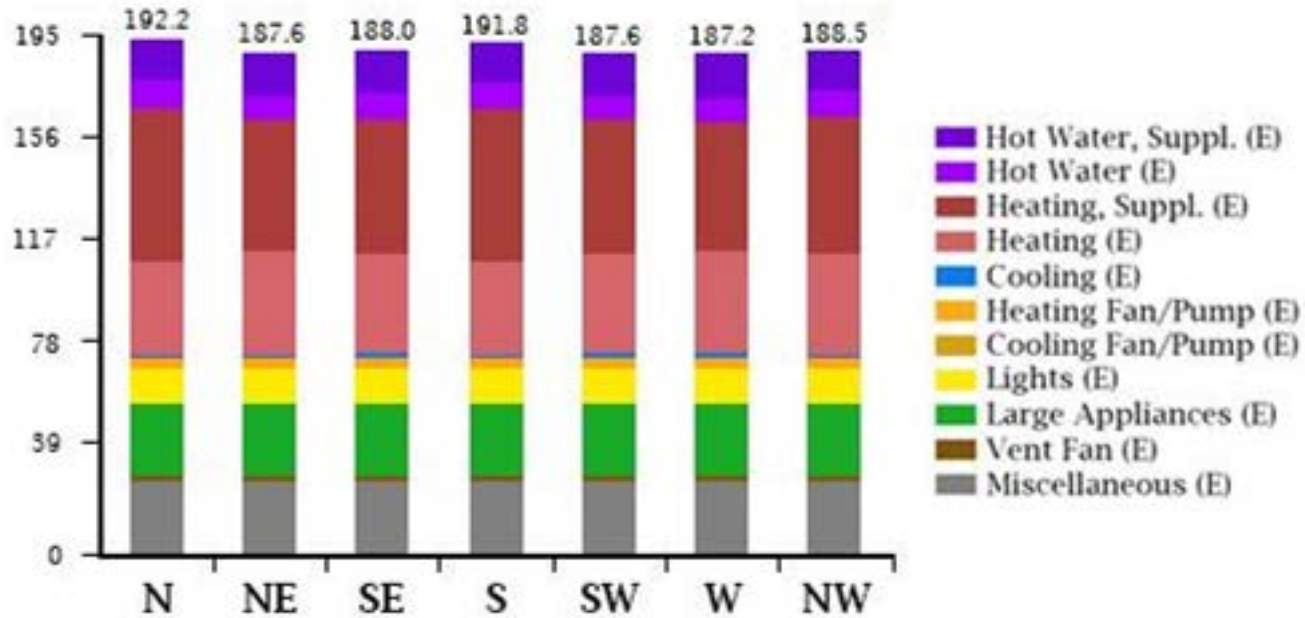




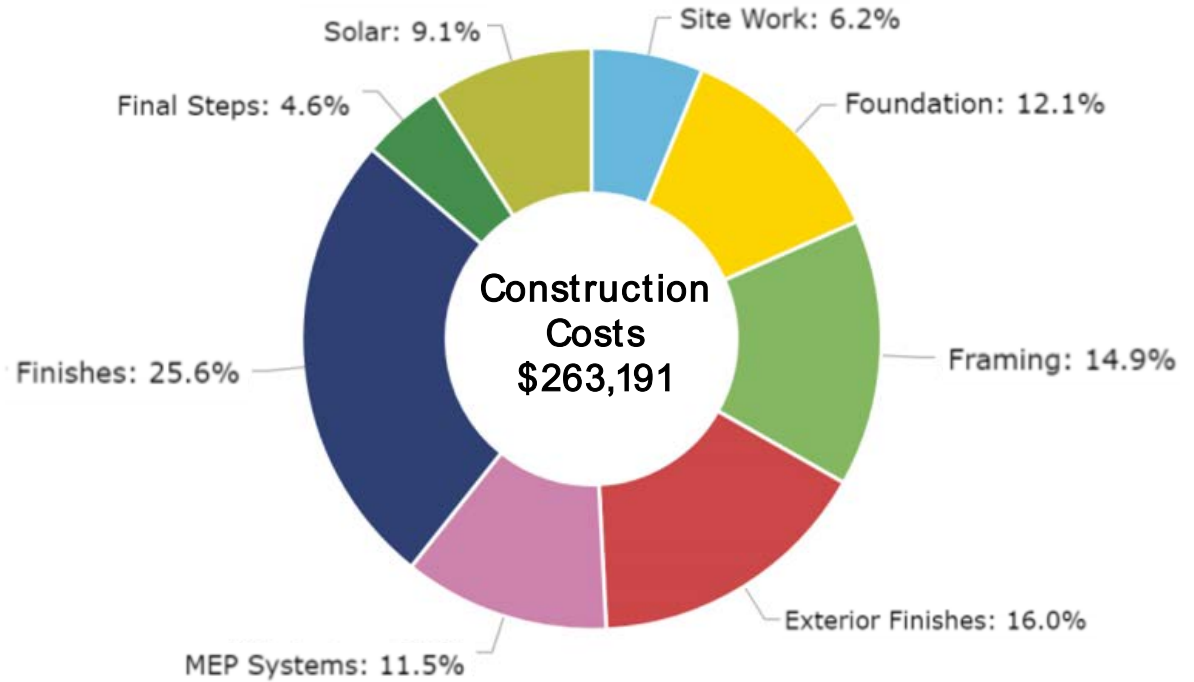


# HERS<sup>®</sup> Index

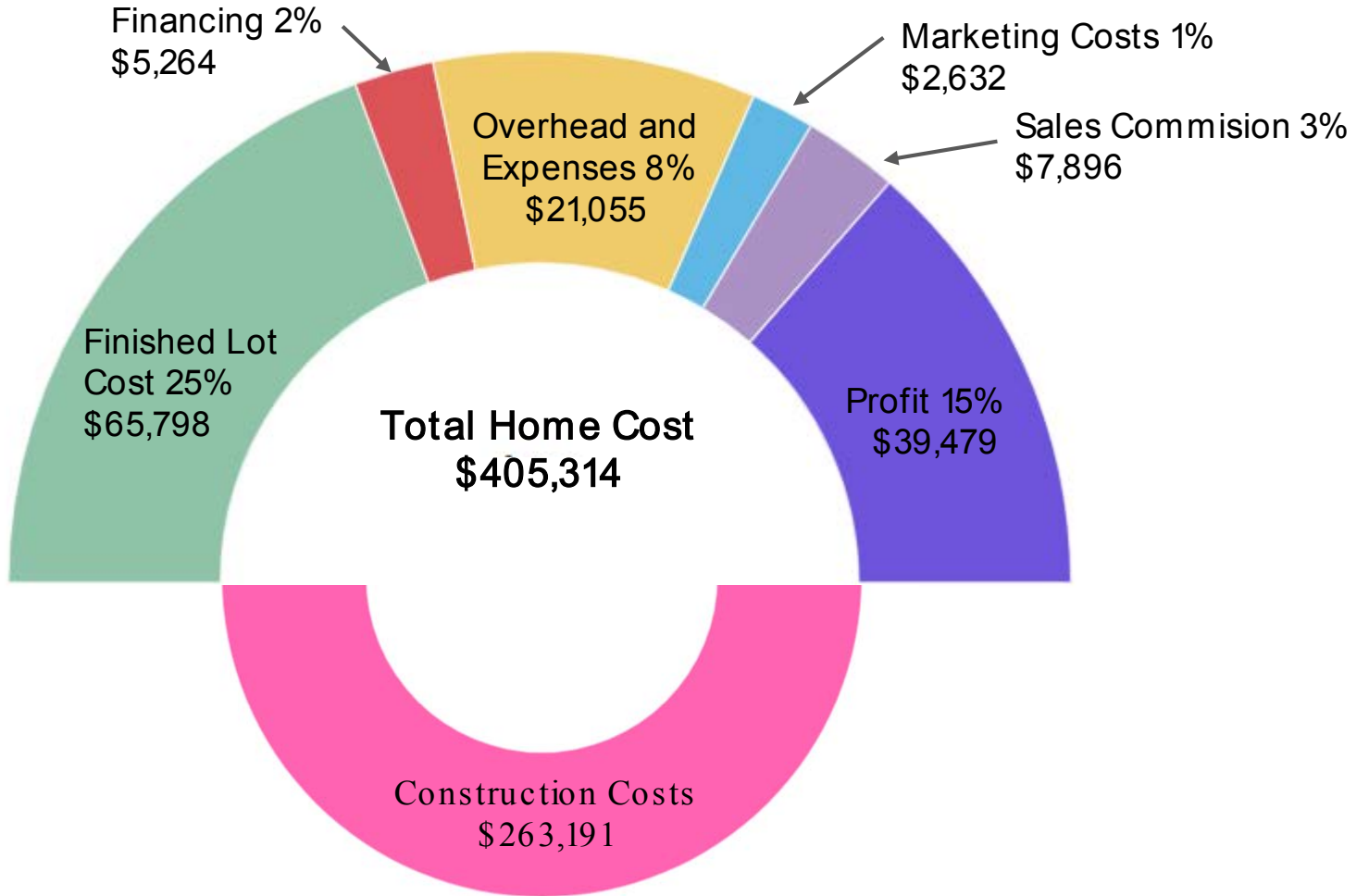




<span style="color: #00AEEF;">●</span> Site Work	\$16,400
<span style="color: #FFD700;">●</span> Foundation	\$31,977
<span style="color: #76B82A;">●</span> Framing	\$39,084
<span style="color: #C00000;">●</span> Exterior Finishes	\$42,005
<span style="color: #C06090;">●</span> MEP Systems	\$30,220
<span style="color: #003366;">●</span> Interior Finishes	\$67,424
<span style="color: #008000;">●</span> Final Steps	\$12,225
<span style="color: #909000;">●</span> Solar	\$23,856

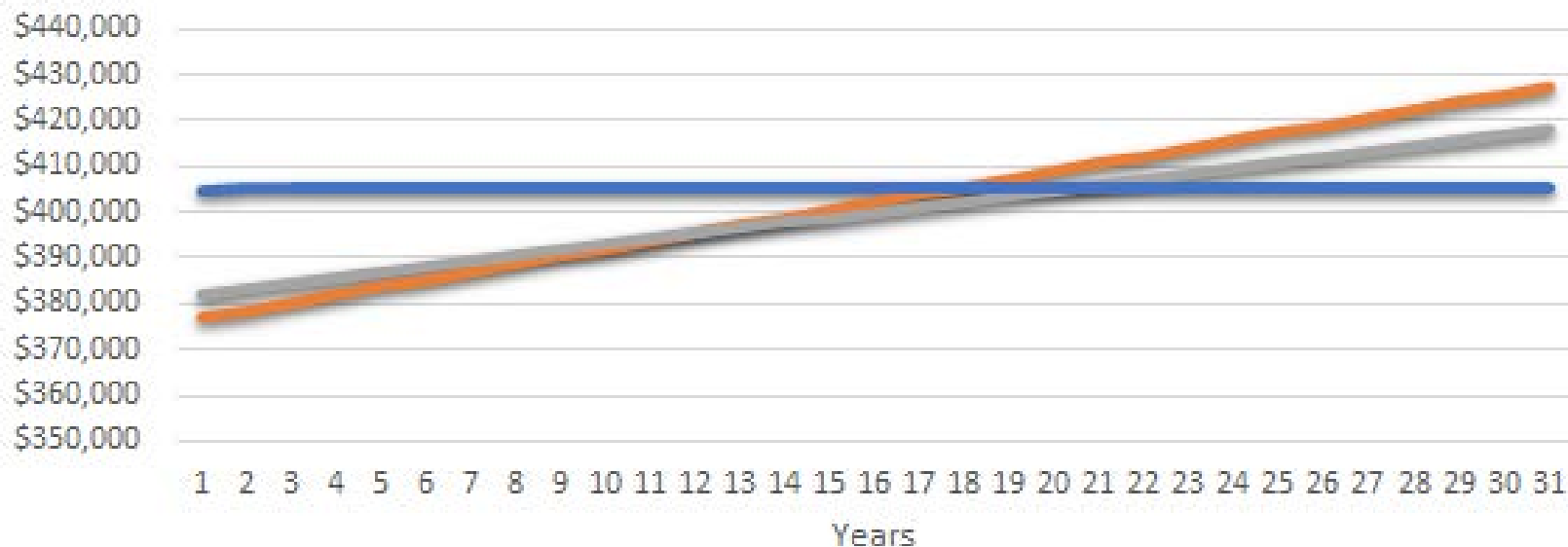






## Total Home and Utility Costs Over 30 Years

Standard Home (2800 sqft)    Ripple w/o PV    Ripple w/ PV





*Finding Pennsylvania's*

**SOLAR FUTURE**



# NextGeneration BuildingSolutions

- Engage with S&A Homes
- Maximize impact
- Integrative Design approach

