



Cheniere Energy, Inc.
700 Milam Street, Suite 1900
Houston, Texas 77002
phone: 713.375.5000
fax: 713.375.6000

RECEIVED
By DOE/FE at 1:26 pm, Apr 02, 2018

April 2, 2018

U. S. Department of Energy – The Office of Fossil Energy
Natural Gas Regulatory Activities
Attention: Larine Moore, Docket Room Manager
Docket Room FE-34
P.O. Box 44375
Washington, DC 20026-4375

Re: Sabine Pass Liquefaction, LLC
DOE Semi-Annual Report for Period of September 1, 2017, through February 28, 2018
FE Docket No / Order:
10-85-LNG / 2833
10-111-LNG / 2961
13-30-LNG, 13-42-LNG, and 13-121-LNG (Consolidated) / 3669
14-92-LNG / 3595
15-63-LNG / 3792
16-197-LNG / 3960
17-161-LNG / 4137
17-161-LNG / 4150

Dear Ms. Moore:

Pursuant to the above-referenced Orders, Sabine Pass Liquefaction, LLC (“Sabine Pass”), herein submits its semi-annual report for September 1, 2017, through February 28, 2018, describing the construction progress of the Sabine Pass Liquefaction Project. On October 12, 2017, Sabine Pass accepted Care, Custody, and Control of Train 4 and placed the facilities in service. This report covers the construction activities for Stage 3 (LNG Train 5 and OSBL) authorized under CP13-552-000 Stage 3 (overall project completion is 86.4%). Additionally, construction activities were conducted for Condensate Storage Tank S-3202 and the third meter authorized under CP13-2-000.

Included as **Attachment A** are the Monthly Reports for construction activities which were submitted to Federal Energy Regulatory Commission under FERC Docket Numbers CP13-2-000 and CP13-552-000 during the reporting period.

Please call me if you have any questions.

Sincerely,

/s/ Karri Mahmoud

Karri Mahmoud
Sabine Pass Liquefaction, LLC

Sabine Pass Liquefaction, LLC

DOE Semi-Annual Report for Period September 1, 2016, through February 28, 2017

ATTACHMENT A

Sabine Pass Liquefaction Project	
Construction Report for Period: September 1, 2017, through February 28, 2018	
Area	Comments
Liquefaction Stage 3 Area – Train 5	<ul style="list-style-type: none">• Continue concrete foundations and paving installations.• Continue to erect structural steel.• Continue installation of A/G pipe.• Continue cable tray installation and cable pulls.• Continue installation of roads, trenches and culverts.• Continue U/G firewater assembly and installation.• Continued sitework related to added outfall structure.• Continued OSBL underground firewater assembly, testing, and installation.• Continued foundations on the LNG sump• Completed GTG pipe rack and plant/instrument air pipe rack.• Completed OSBL cable tray installation.• Completed field erected tank fabrication for filtered water storage tank, demin water tank and RO water storage tank.
Third Meter and Condensate Tank	<ul style="list-style-type: none">• Began excavation on meter station area• Began installing sheet piling and timber piling for station• Began setting forms and rebar for foundations• Pile driving for condensate tank S-2302.

SABINE PASS LIQUEFACTION PROJECT

Cameron Parish, Louisiana

Monthly Progress Report
September 2017

Table of Contents

1.0	Executive Summary	1
2.0	Project Highlights	1
3.0	Environmental, Safety, and Health Progress	2
4.0	Schedule	2
5.0	Construction and Start up	2
6.0	Permitting and Environmental	3
7.0	PHOTOS.....	4

1.0 Executive Summary

This report covers activities for the SPL Stage 2 and SPL Stage 3 projects that occurred during the month of September 2017.

Stage 2 Engineering and Procurement are 100% complete. Subcontract and direct hire construction work are 100% and 99.9% complete, respectively. Overall project completion for Stage 2 is 99.9% complete against the plan of 100%.

Stage 3 Engineering is now 100% complete. Procurement is now 98.9% complete. Subcontract and direct hire work are 58.6% and 45.1% complete, respectively. Stage 3 overall project completion is 76.1% against the plan of 76.9%. Train 4 is projecting October 2017 for substantial completion. Train 5 is projecting August 2019 for substantial completion.

2.0 Project Highlights

On Stage 3, engineering is complete and is now concentrating efforts on vendor print review and support to construction. Procurement delivered the stacks for the air coolers and instrumentation. Stage 3 subcontract formation activity continued. For construction, OSBL firewater U/G pipe installation continued. Installation of foundations in the ISBL and OSBL areas continued with ISBL primary focus on the crane leave-outs. OSBL areas continued with primary focus on work related to HPAA flare foundations, LNG sump, and miscellaneous foundations. Steel erection continued in the compressor shelter, propane refrigeration area, ethylene cold box, with miscellaneous and vendor dress out in ISBL. In OSBL, steel erection continued in flare pipe rack, BOG shelter, and water treatment building. In ISBL, A/G pipe installation continued in the cryo rack, AGRU pipe rack, mercury removal area, fuel gas facilities, hot oil, compressor, propane condenser, amine areas, hot oil, propane refrigeration, H₂S removal, ethylene cold box, methane cold box, condensate stabilization, and utilities pipe racks. OSBL A/G pipe installation continued in the main north-south pipe rack, utilities pipe rack, main east-west pipe rack, refrigerant storage pipe rack, knock out drums pipe rack, GTG pipe rack, instrument/plant air area, and water treatment building.

In the ISBL, Construction began setting the compressor area waste heat recovery units and gas turbine stacks and in OSBL, the GTG assembly continued, while the water treatment building equipment and other miscellaneous equipment were set. Cable tray installation continues in ISBL related to the propane condenser, cryo rack, mercury removal, fuel gas facilities, AGRU pipe rack, thermal oxidizer area, and compressor area. Cable pulls continued in ISBL. High voltage cable pulls for the propane substation commenced, and continued for the compressor substation. Cable tray installation in main north-south, main east-west, and utilities racks continued. OSBL and ISBL sitework continued with installation of roads, trenches and culverts, and final grading. Sitework related to the additional outfall continued within site limits. Revamp A/G pipe and high voltage cable clamping continued.

3.0 Environmental, Safety, and Health Progress

During the month of September, the following ES&H related events occurred.

	Near Miss				First Aid				Recordable
	Month	ITD	Month	ITD	Month	ITD	Month	ITD	
Bechtel	1	2705	34	3368	2	107	0	14	
Subcontractor	0	116	0	221	0	9	0	1	
Total	1	2821	34	3589	2	116	0	15	

4.0 Schedule

Train 4 is projecting October 2017 for substantial completion. Train 5 is projecting August 2019 for substantial completion.

5.0 Construction and Start up

Activities by Area		
Area	Activities in September	Planned Work for October
Liquefaction Stage 2 (CP11-72)	<ul style="list-style-type: none"> Train 4 completed performance test September 21. Continued working punchlist items. 	<ul style="list-style-type: none"> Complete punchlist items. Conduct strainer cleaning.
Stage 3 – Train 5 & Stage 3 ISBL and OSBL (CP13-552)	<ul style="list-style-type: none"> Continue concrete foundations and paving installations. Continue to erect structural steel. Continue installation of A/G pipe. Continue cable tray installation and cable pulls. Continue installation of roads, trenches and culverts. Continue U/G firewater assembly and installation. Set water treatment building equipment and continued GTG assembly. Continued field erected tank fabrication for filtered water storage tank, demin water tank and RO water storage tank. Set amine surge tank. Continued sitework related to added outfall structure, within site limits. 	<ul style="list-style-type: none"> Continue concrete foundations and paving installations. Continue to erect structural steel. Continue installation of A/G pipe. Continue cable tray installation and cable pulls. Commence ISBL pipe installation in condensate stabilization area Continue installation roads, trenches and culverts. Continue onsite permanent draining installation activities related to outfall. Continue UG firewater assembly, testing, and installation. Continue to assemble GTGs and BOG compressor work. Continue fabrication of OSBL Wet and Dry Flare assemblies. Continue fabrication of filtered water storage tank, demin water tank and RO water storage tank. Continue sitework related to added outfall structure, within site limits.

6.0 Permitting and Environmental

Summary of Problems, Non-Compliances, and Corrective Actions

Date	Description
Intermittent	As per previous month's reports, SPL continues to coordinate with LDEQ to ensure air permit compliance is demonstrated.

Agency Contacts/Inspections

Agency	Name	Date	Location/Activity
None.			

7.0 PHOTOS



Train 5 - Propane Condenser Rack



Train 5 - Gas Turbine Stacks Installation in Compressor Area



Train 5 – Propane Refrigeration Area



Train 5 – Amine Area



Train 5 - Compressor Area



Stage 3 OSBL – Compressors Foundation - Flare Modification Scope



Stage 3 OSBL – Flare Assembly



Stage 3 OSBL – BOG Compressor Building

SABINE PASS LIQUEFACTION PROJECT

Cameron Parish, Louisiana

Monthly Progress Report
October 2017

Table of Contents

1.0	Executive Summary	1
2.0	Project Highlights	1
3.0	Environmental, Safety, and Health Progress.....	1
4.0	Schedule	2
5.0	Construction and Start up	2
6.0	Permitting and Environmental	2
7.0	PHOTOS	3

1.0 Executive Summary

This report covers activities for the SPL Stage 2 and SPL Stage 3 projects that occurred during the month of October 2017.

Stage 2 is now 100% complete against a target plan of 100%. Stage 3 Engineering is 100% complete. Procurement is now 98.9% complete. Subcontract and direct hire work are 60.0% and 50.5% complete, respectively. Stage 3 overall project completion is 78.2% against the plan of 79.3%. Train 4 achieved substantial completion on October 9, 2017. Train 5 is projecting August 2019 for substantial completion.

2.0 Project Highlights

On Stage 3, engineering is complete and is now focused on vendor print review and support to construction. Procurement completed the deliveries of flare modification, air compressors, and structural steel. Stage 3 subcontract formation activity continued. For construction, OSBL firewater U/G pipe installation continued. Installation of foundations in the ISBL and OSBL areas continued with ISBL primary focus on LNG and storm trench concrete work. OSBL areas continued with primary focus on work related to valve platform structure, LNG sump, and miscellaneous foundations. Steel erection continued in the compressor shelter, propane refrigeration area, and ethylene cold box, with miscellaneous steel and vendor dress out in ISBL. In OSBL, steel erection is complete in the flare pipe rack, BOG shelter, and water treatment building. OSBL steel erection in the flare compressor area commenced. In ISBL, A/G pipe installation continued in the cryo rack, AGRU pipe rack, mercury removal area, fuel gas facilities, hot oil, compressor, propane condenser, amine areas, hot oil, propane refrigeration, H2S removal, ethylene cold box, methane cold box, condensate stabilization, and utilities pipe racks. OSBL A/G pipe installation continued in the main north-south pipe rack, utilities pipe rack, main east-west pipe rack, refrigerant storage pipe rack, knock out drums pipe rack, GTG pipe rack, instrument/plant air area, and water treatment building.

In the ISBL, Construction completed setting the waste heat recovery units and gas turbine stacks. In OSBL, the GTG assembly continued, while the water treatment building equipment and other miscellaneous equipment were set. Cable tray installation continues in ISBL for the propane condenser, cryo rack, mercury removal, fuel gas facilities, AGRU pipe rack, thermal oxidizer area, and compressor area. Cable pulls continued in ISBL. High voltage cable pulls continued for the propane and compressor substations. In OSBL, cable tray installation in main north-south, main east-west, and utilities pipe racks continued. OSBL and ISBL sitework continued with installation of roads, trenches and culverts, and final grading. Sitework related to the additional outfall continued within site limits. Revamp A/G pipe completed, with the exception of the pipe tie-ins. Revamp high voltage cable clamping was completed.

3.0 Environmental, Safety, and Health Progress

During the month of October, the following ES&H related events occurred.

	Near Miss		First Aid		Recordable		Lost Time	
	Month	ITD	Month	ITD	Month	ITD	Month	ITD
Bechtel	4	2690	33	3408	1	108	0	14
Subcontractor	0	116	0	222	0	9	0	1
Total	4	2806	33	3630	1	117	0	15

4.0 Schedule

Train 4 achieved substantial completion on October 9, 2017. Train 5 is projecting August 2019 for substantial completion.

5.0 Construction and Start up

Activities by Area		
Area	Activities in October	Planned Work for November
Liquefaction Stage 2 (CP11-72)	<ul style="list-style-type: none"> Train 4 achieved substantial completion on October 9, 2017 	<ul style="list-style-type: none"> None.
Stage 3 – Train 5 & Stage 3 ISBL and OSBL (CP13-552)	<ul style="list-style-type: none"> Continue concrete foundations and paving installations. Continue to erect structural steel. Continue installation of A/G pipe. Continue cable tray installation and cable pulls. Continue installation of roads, trenches and culverts. Continue U/G firewater assembly and installation. Set water treatment building equipment and continued GTG assembly. Continued field erected tank fabrication for filtered water storage tank, demin water tank and RO water storage tank. Set amine surge tank. Continued sitework related to added outfall structure. Continued OSBL underground firewater assembly, testing, and installation. 	<ul style="list-style-type: none"> Continue concrete foundations and paving installations. Continue to erect structural steel. Continue installation of A/G pipe. Continue cable tray installation and cable pulls. Continue ISBL pipe installation in condensate stabilization area Continue installation roads, trenches and culverts. Continue UG firewater assembly, testing, and installation. Continue to assemble GTGs and BOG compressor work. Continue fabrication of OSBL Wet and Dry Flare assemblies. Continue fabrication of filtered water storage tank, demin water tank and RO water storage tank. Continue sitework related to added outfall structure.

6.0 Permitting and Environmental

Summary of Problems, Non-Compliances, and Corrective Actions

Date	Description
Intermittent	As per previous month's reports, SPL continues to coordinate with LDEQ to ensure air permit compliance is demonstrated.

Agency Contacts/Inspections

Agency	Name	Date	Location/Activity
None.			

7.0 PHOTOS



Train 5 –Thermal Oxidizer (Flare Pipe Rack in OSBL in the background)



Train 5 - West side of ISBL viewed from the top of AGRU Rack



Train 5 – Compressor Area



Train 5 - Propane Refrigeration Area



Stage 3 OSBL – Flare Pre-Assembly



Stage 3 OSBL – Elevated Flare Rack (Flare Modification Scope)

SABINE PASS LIQUEFACTION PROJECT

Cameron Parish, Louisiana

Monthly Progress Report

November 2017

Table of Contents

1.	Executive Summary	1
2.	Project Highlights	1
3.	Environmental, Safety, and Health Progress	1
4.	Schedule	2
5.	Construction and Start up	2
6.	Permitting and Environmental	3
7.	PHOTOS	4

1. Executive Summary

This report covers activities for the SPL Stage 3 projects that occurred during the month of November 2017.

Stage 3 Engineering and Procurement are 100% complete. Subcontract and direct hire work are 61.7% and 56.9% complete, respectively. Stage 3 overall project completion is 81.1% against the plan of 82.2%. Train 5 is projecting June 2019 for substantial completion.

2. Project Highlights

Engineering is complete and focused on construction support. Procurement continues to deliver the instrumentation and valves while supporting field activities. OSBL firewater underground pipe installation continues. ISBL and OSBL foundations continue to be installed with an emphasis on the ISBL LNG and storm trench area work. OSBL focus is on the LNG sump and drainage outfall. Steel erection continued in the compressor shelter, propane refrigeration area, methane cold box, and ethylene cold box. Miscellaneous steel and vendor dress-out continued in ISBL. In OSBL, steel erection is complete in the flare pipe rack and the flare compressor area. In ISBL, aboveground pipe installation continued in the cryo rack, AGRU pipe rack, mercury removal area, fuel gas facilities, hot oil, compressor, propane condenser, amine, propane refrigeration, ethylene cold box, methane cold box, condensate stabilization, and utilities pipe racks. OSBL aboveground pipe installation continued in the main north-south pipe rack, utilities pipe rack, main east-west pipe rack, refrigerant storage pipe rack, knockout drums pipe rack, GTG pipe rack, instrument/plant air area, and water treatment building.

In ISBL, Construction set the compressor area filter houses and propane rack fin fans related to the cold box leave-out and started lube oil flush for ethylene compressors. In OSBL, the GTG assembly continued, while the water treatment building equipment and other miscellaneous equipment were set. Furthermore, the fabrication and setting of OSBL Wet and Dry Flare assemblies were completed. Cable tray installation continues in ISBL for the propane condenser, cryo rack, mercury removal, fuel gas facilities, AGRU pipe rack, thermal oxidizer area, and compressor area. Cable pulls continued in ISBL. In OSBL, cable tray installation in main north-south, main east-west, and utilities pipe racks continued. ISBL and OSBL sitework continued with installation of roads, trenches and culverts, and final grading. Sitework related to the additional outfall continued within site limits. Revamp aboveground pipe installation is essentially complete, with the exception of the pipe tie-ins. Revamp high voltage cable clamping is complete.

3. Environmental, Safety, and Health Progress

During the month of November, the following ES&H related events occurred.

November 2017	Near Miss		First Aid		Recordable		Lost Time	
	Month	ITD	Month	ITD	Month	ITD	Month	ITD
Bechtel	4	2697	30	3438	2	110	0	14
Subcontractor	0	116	1	224	0	9	0	1
Total	4	2813	31	3662	2	119	0	15

4. Schedule

Stage 3 Engineering and Procurement are 100% complete. Subcontract and direct hire work are 61.7% and 56.9% complete, respectively. Stage 3 overall project completion is 81.1% against the plan of 82.2%. Train 5 is projecting June 2019 for substantial completion.

5. Construction and Start up

Activities by Area		
Area	Activities in November	Planned Work for December
Stage 3 – Train 5 & Stage 3 ISBL and OSBL (CP13-552)	<ul style="list-style-type: none"> • Continue concrete foundations and paving installations. • Continue to erect structural steel. • Continue installation of A/G pipe. • Continue cable tray installation and cable pulls. • Continue installation of roads, trenches and culverts. • Continue U/G firewater assembly and installation. • Continued sitework related to added outfall structure. • Continued OSBL underground firewater assembly, testing, and installation. • Completed setting the compressor area filter houses, and setting of propane rack fin fans related to the cold box leave-out. • Completed foundation installation in OSBL for the process flare and HPAA flare foundations. • Completed structural steel erection related to the HPAA flare area. • Completed fabrication and setting of OSBL Wet and Dry Flare assemblies. 	<ul style="list-style-type: none"> • Continue concrete foundations and paving installations. • Continue to erect structural steel. • Continue installation of A/G pipe. • Continue cable tray installation and cable pulls. • Continue installation roads, trenches and culverts. • Continue UG firewater assembly, testing, and installation. • Continue sitework related to added outfall structure. • Commence energization of the utility, compressor and propane substations. •

6. Permitting and Environmental

Summary of Problems, Non-Compliances, and Corrective Actions

Date	Description
--	SPL has completed the installation of the upgrades to the flare system as required by the 2016 Compliance Order.

Agency Contacts/Inspections

Agency	Name	Date	Location/Activity
None.			

7. PHOTOS



OSBL – Field Fabricated Tanks



OSBL – Outfall Structure



OSBL – Containment Basin



OSBL – Stage 3 Flare Bottom Section Setting



OSBL – Stage 3 Flare Top Section Setting



ISBL – Setting of Last Refrigeration Fin Fan

SABINE PASS LIQUEFACTION PROJECT

Cameron Parish, Louisiana

Monthly Progress Report
December 2017

Table of Contents

1.	Executive Summary	1
2.	Project Highlights	1
3.	Environmental, Safety, and Health Progress	1
4.	Schedule	1
5.	Construction and Start up	2
6.	Permitting and Environmental	2
7.	PHOTOS.....	3

1. Executive Summary

This is the fiftieth progress report for the Sabine Pass Liquefaction projects which covers December 2017 activities for the SPL Stage 3 project.

Stage 3 Engineering and Procurement are at 100% complete. Subcontract work is 63.4% complete and direct hire work is 62.1%. Stage 3 overall project completion is 83.1% against the plan of 83.7%. Train 5 is projecting June 2019 for substantial completion.

2. Project Highlights

Construction continues to progress steel erection, piping installation, cable pulling and terminations in all available areas in Train 5 and OSBL. Some highlights from the past month include the energization of OSBL and ISBL substations, completion of the first two refrigeration compressors lube oil system flush, completion of setting the water treatment building equipment and GTG, and aboveground pipe installation in multiple areas. Amongst many other activities, Construction continues installing miscellaneous ISBL concrete foundations, cable tray and conduits related to compressor areas, and cable pulling in the propane condenser rack.

3. Environmental, Safety, and Health Progress

During the month of December, the following ES&H related events occurred.

	Near Miss		First Aid		Recordable		Lost Time	
	Month	ITD	Month	ITD	Month	ITD	Month	ITD
Bechtel	4	2701	30	3472	0	110	0	14
Subcontractor	0	116	5	229	0	9	0	1
Total	4	2817	35	3701	0	119	0	15

4. Schedule

Stage 3 Engineering and Procurement are at 100% complete. Subcontract work is 63.4% complete and direct hire work is 62.1%. Stage 3 overall project completion is 83.1% against the plan of 83.7%. Train 5 is projecting June 2019 for substantial completion.

5. Construction and Start up

Activities by Area		
Area	Activities in December	Planned Work for January
Stage 3 – Train 5 & Stage 3 ISBL and OSBL (CP13-552)	<ul style="list-style-type: none"> Continue concrete foundations and paving installations. Continue to erect structural steel. Continue installation of A/G pipe. Continue cable tray installation and cable pulls. Continue installation of roads, trenches and culverts. Continue U/G firewater assembly and installation. Continued sitework related to added outfall structure. Continued OSBL underground firewater assembly, testing, and installation. Completed energization of the utility, compressor and propane substations Completed setting of water treatment building equipment and GTG 	<ul style="list-style-type: none"> Continue concrete foundations and paving installations. Continue to erect structural steel. Continue installation of A/G pipe. Continue cable tray installation and cable pulls. Continue installation roads, trenches and culverts. Continue UG firewater assembly, testing, and installation. Continue sitework related to added outfall structure. Continue receiving and staging of Fin Fan motors in the Propane Condenser area and commence installation Commence hydro test for RO water storage tank and demin water tank

6. Permitting and Environmental

Summary of Problems, Non-Compliances, and Corrective Actions

Date	Description
None.	

Agency Contacts/Inspections

Agency	Name	Date	Location/Activity
None.			

7. PHOTOS



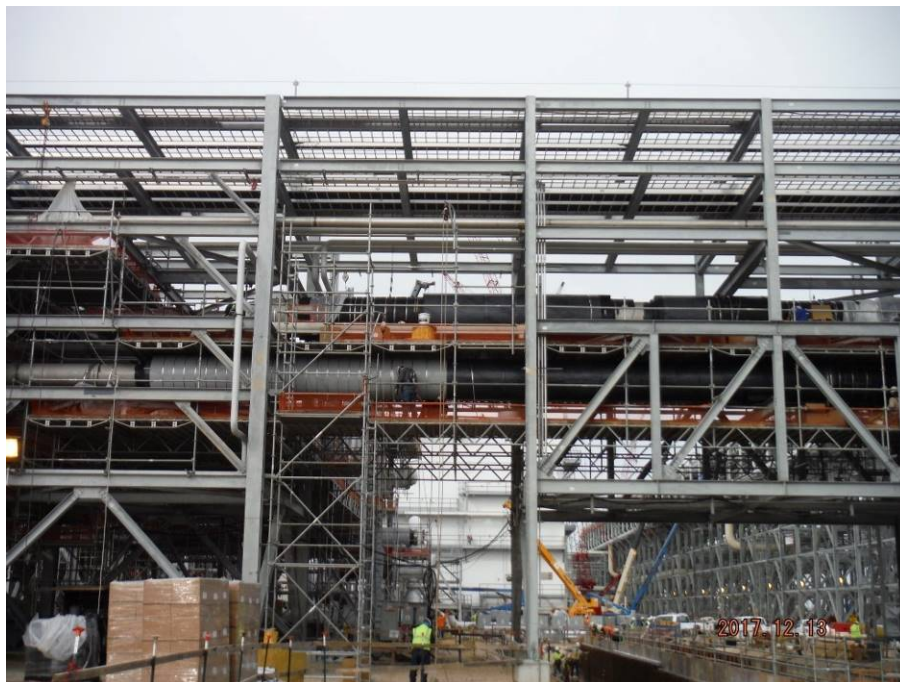
Train 5 – Installation of Propane Refrigeration Subcooler Shroud



Train 5 – Piping Progress between Refrigeration Compressor Area and Cryo Pipe Rack



OSBL – Pipe Installation towards flare in progress



OSBL – Piping Insulation in Progress



OSBL – Piping Installation towards the Flare



ISBL – Water Treatment Area Progress

SABINE PASS LIQUEFACTION PROJECT

Cameron Parish, Louisiana

Monthly Progress Report
January 2018

Table of Contents

1.	Executive Summary	1
2.	Project Highlights	1
3.	Environmental, Safety, and Health Progress	1
4.	Schedule	1
5.	Construction and Start up	2
6.	Permitting and Environmental	2
7.	PHOTOS.....	3

1. Executive Summary

This progress report for the Sabine Pass Liquefaction projects covers January 2018.

Stage 3 Engineering and Procurement are at 100% complete. Subcontract work is 64.7% complete and direct hire work is 65.5%. Stage 3 overall project completion is 84.4% against the plan of 85.1%. Train 5 is projecting June 2019 for substantial completion.

2. Project Highlights

Construction continues to progress steel erection, piping installation, cable pulling and terminations in all available areas in Train 5 and OSBL. Some highlights from the past month include the continuation of compressors lube oil system flush, started loop checks, completion of the steel erection in the OBSL valve platform structure, completion of OSBL cable tray installation in all racks, and continuation of aboveground pipe installation in multiple areas. Amongst many other activities, Construction continues installing miscellaneous ISBL concrete foundations, cable tray, conduit, and cable pulling in multiple areas. See Section 4.0 for additional information on Construction Progress.

3. Environmental, Safety, and Health Progress

During the month of January, the following ES&H related events occurred.

January	Near Miss		First Aid		Recordable		Lost Time	
	Month	ITD	Month	ITD	Month	ITD	Month	ITD
Bechtel	5	2707	24	3496	1	111	0	14
Subcontractor	0	116	1	230	0	9	0	1
Total	5	2823	25	3726	1	120	0	15

4. Schedule

Stage 3 Engineering and Procurement are at 100% complete. Subcontract work is 64.7% complete and direct hire work is 65.5%. Stage 3 overall project completion is 84.4% against the plan of 85.1%. Train 5 is projecting June 2019 for substantial completion.

5. Construction and Start up

Activities by Area		
Area	Activities in December	Planned Work for January
Stage 3 – Train 5 & Stage 3 ISBL and OSBL (CP13-552)	<ul style="list-style-type: none"> Continue concrete foundations and paving installations. Continue to erect structural steel. Continue installation of A/G pipe. Continue cable tray installation and cable pulls. Continue installation of roads, trenches and culverts. Continue U/G firewater assembly and installation. Continued sitework related to added outfall structure. Continued OSBL underground firewater assembly, testing, and installation. 	<ul style="list-style-type: none"> Continue concrete foundations and paving installations. Continue to erect structural steel. Continue installation of A/G pipe. Continue cable tray installation and cable pulls. Continue installation roads, trenches and culverts. Complete OSBL underground firewater assembly, testing, and installation. Complete outfall structure foundation work Continue receiving and staging of Fin Fan motors in the Propane Condenser area and commence installation Complete hydro test for RO water storage tank and demin water tank

6. Permitting and Environmental

Summary of Problems, Non-Compliances, and Corrective Actions

Date	Description
None.	

Agency Contacts/Inspections

Agency	Name	Date	Location/Activity
None.			

7. PHOTOS



Train 5 – Piping Installation Progress at Compressor Alleyway



Train 5 – Construction Progress on Compressor Deck



OSBL – Piping Insulation Progress



OSBL – Cable Tray Installation at R06 Pipe Rack

SABINE PASS LIQUEFACTION PROJECT

Cameron Parish, Louisiana

Monthly Progress Report
February 2018

Table of Contents

1.	Executive Summary	1
2.	Project Highlights	1
3.	Environmental, Safety, and Health Progress	1
4.	Schedule	1
5.	Construction and Start up	2
6.	Permitting and Environmental	2
7.	PHOTOS.....	3

1. Executive Summary

This progress report for the Sabine Pass Liquefaction projects covers activities for February 2018.

Stage 3 Engineering and Procurement are at 100% complete. Subcontract work is 66.4% complete and direct hire work is 70.8%. Stage 3 overall project completion is 86.4% against the plan of 87.0%. Train 5 is projecting June 2019 for substantial completion.

2. Project Highlights

Construction continues to progress steel erection, piping installation, cable pulling and terminations in all available areas in Train 5 and OSBL. Some highlights from the past month include the completion of the GTG pipe rack and plant/instrument air pipe rack, completion of field erected tank fabrication for the filtered water storage tank, demin water tank and RO water storage tank and the completion of the hydro test for the RO water storage tank and demin water tanks, and continuation of aboveground pipe installation in multiple areas. Amongst many other activities, Construction continues installing miscellaneous ISBL concrete foundations, cable tray, conduit, and cable pulling in multiple areas. See Section 4.0 for additional information on Construction Progress.

3. Environmental, Safety, and Health Progress

During the month of February, the following ES&H events occurred.

	Near Miss		First Aid		Recordable		Lost Time	
	Month	ITD	Month	ITD	Month	ITD	Month	ITD
Bechtel	3	2710	33	3532	0	111	0	14
Subcontractor	0	116	0	230	0	9	0	1
Total	3	2826	33	3762	0	120	0	15

4. Schedule

Stage 3 Engineering and Procurement are at 100% complete. Subcontract work is 66.4% complete and direct hire work is 70.8%. Stage 3 overall project completion is 86.4% against the plan of 87.0%. Train 5 is projecting June 2019 for substantial completion.

5. Construction and Start up

Activities by Area		
Area	Activities in February	Planned Work for March
Stage 3 – Train 5 & Stage 3 ISBL and OSBL (CP13-552)	<ul style="list-style-type: none"> Continue concrete foundations and paving installations. Continue to erect structural steel. Continue installation of A/G pipe. Continue cable tray installation and cable pulls. Continue installation of roads, trenches and culverts. Continue U/G firewater assembly and installation. Continued sitework related to added outfall structure. Continued OSBL underground firewater assembly, testing, and installation. Continued foundations on the LNG sump Completed GTG pipe rack and plant/instrument air pipe rack. Completed OSBL cable tray installation. Completed field erected tank fabrication for filtered water storage tank, demin water tank and RO water storage tank. Completed hydro test for RO water storage tank and demin water tank. 	<ul style="list-style-type: none"> Continue concrete foundations and paving installations. Continue to erect structural steel. Continue installation of A/G pipe. Continue cable tray installation and cable pulls. Continue installation roads, trenches and culverts. Complete OSBL underground firewater assembly, testing, and installation. Complete outfall structure foundation work Continue receiving and staging of Fin Fan motors in the Propane Condenser area and commence installation Continue turning over systems from construction to startup with focus on GTG, utilities and flare systems. Place ISBL Instrument Air into service Perform Fire Water function checks
Third Meter (CP13-2)	<ul style="list-style-type: none"> Excavation on meter station area Installing sheet piling and timber piling for station Setting forms and rebar for foundations 	<ul style="list-style-type: none"> Continue sheet piling and timber piling for station Continue setting forms and rebar for foundations

6. Permitting and Environmental

Summary of Problems, Non-Compliances, and Corrective Actions

Date	Description
None.	

Agency Contacts/Inspections

Agency	Name	Date	Location/Activity
None.			

7. PHOTOS



Train 5 – Dehydration Mercury Removal Area



Train 5 – Piping Progress at Propane Refrigeration Area



OSBL – Water Treatment Building Progress



OSBL – Valve Platform Structure with Pipe Installation



OSBL – Outfall Inlet Sluice Gates



OSBL – Outfall Outlet Structure Progress