



PORTSMOUTH EM SITE SPECIFIC ADVISORY BOARD

•OSU Endeavor Center• 1862 Shyville Road • Piketon, Ohio 45661 • (740) 289-5249 •

Proposed Agenda for the March 1, 2018 Board Meeting

Chair

Robert L. Berry

Co-Vice Chairs

Lisa Bennett
Carlton L. Cave

Board Members

Todd Burkitt
Bradley Burns
Jody Crabtree
Maddeline C. Caudill
Al Don Cisco
Dennis Foreman
Wade Fraley
Brandon Greene
Carl R. Hartley
Turman Helton
Ronda J. Kinnamon
Irma C. Payne
Cynthia Quillen
Jimmy E. Smalley
Beckie Thomas-Kent
Judy R. Vollrath

6 p.m.

Call to Order, Introductions
Review of Agenda
Approval of January Minutes

DDFO Comments

--15 minutes

Federal Coordinator Comments

--10 minutes

Liaison Comments

-- 5 minutes

Presentation–Science Bowl Impact, Jeff Pinkerton, FBP Special Guest, Wheelersburg Science Bowl Team

--20 minutes

Administrative Issues

--20 minutes

Subcommittee Updates

--5 minutes

Public Comments

--15 minutes

Final Comments from the Board

--15 minutes

Adjourn

Deputy Designated

Federal Official

Joel Bradburne

DOE Federal Coordinator

Greg Simonton

Support Services

EHI Consultants, Inc.
1862 Shyville Road
Piketon, OH 45661
Phone 740.289.5249
Fax 740.289.1578

U.S. DEPARTMENT OF ENERGY



Deputy Designated Federal Official Presentation Portsmouth Site Specific Advisory Board

Greg Simonton, Federal Coordinator
March 1 , 2018

Outstanding!!

**JANUARY
2018**

2 MILLION

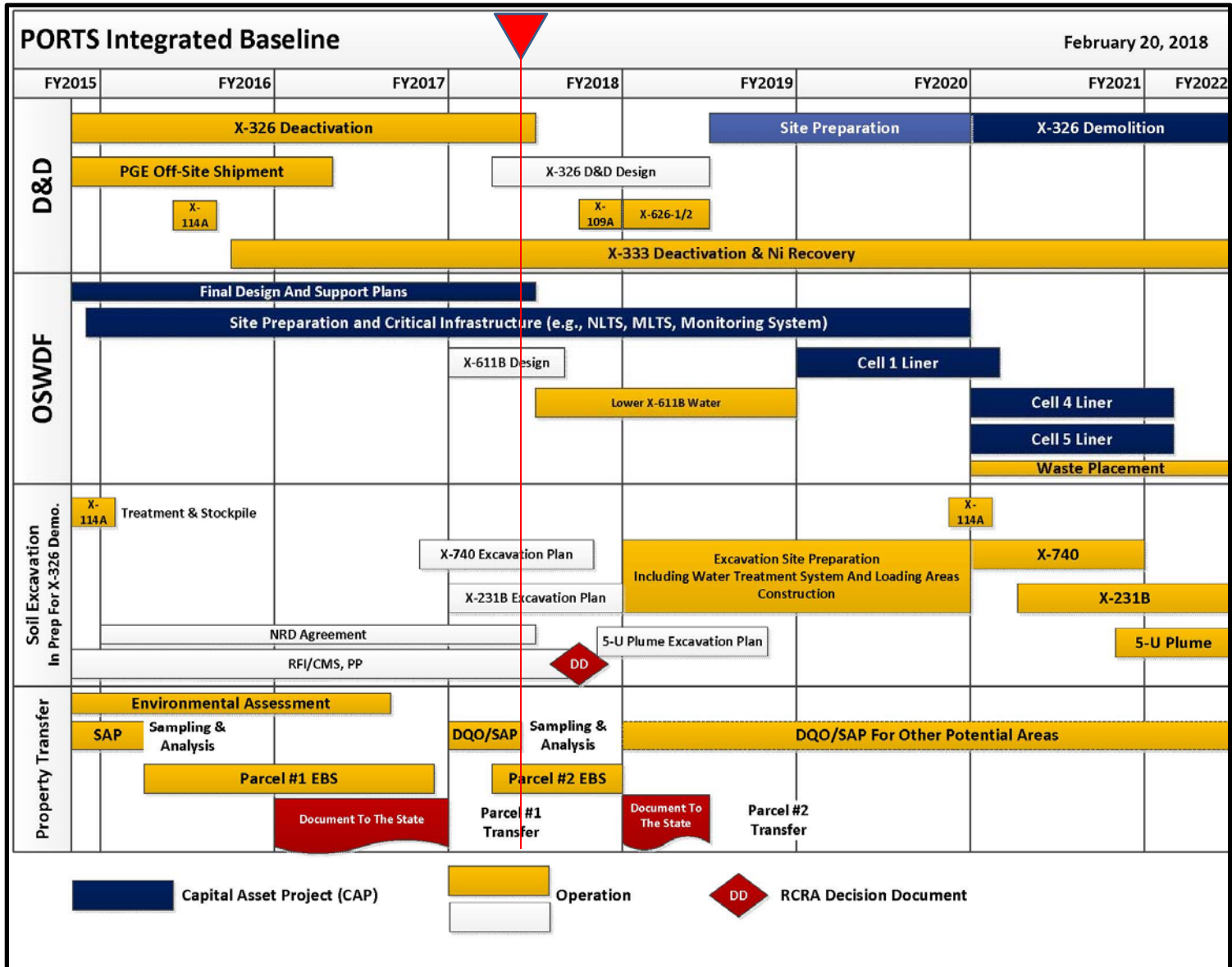
FBP Safe Work Hours!



Zero Lost-time Injuries

**P O R T S
SAFETY WORKS**







D&D Progress – X-326 Deactivation



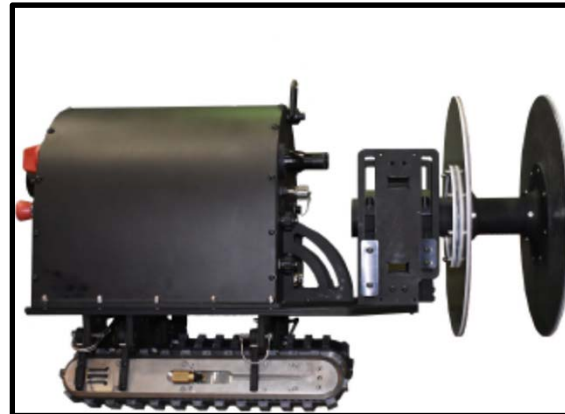


D&D Progress – X-333 Deactivation





D&D Progress – X-333 Deactivation – Large CAS System D&D





D&D Progress – Transformer Donated to SODI

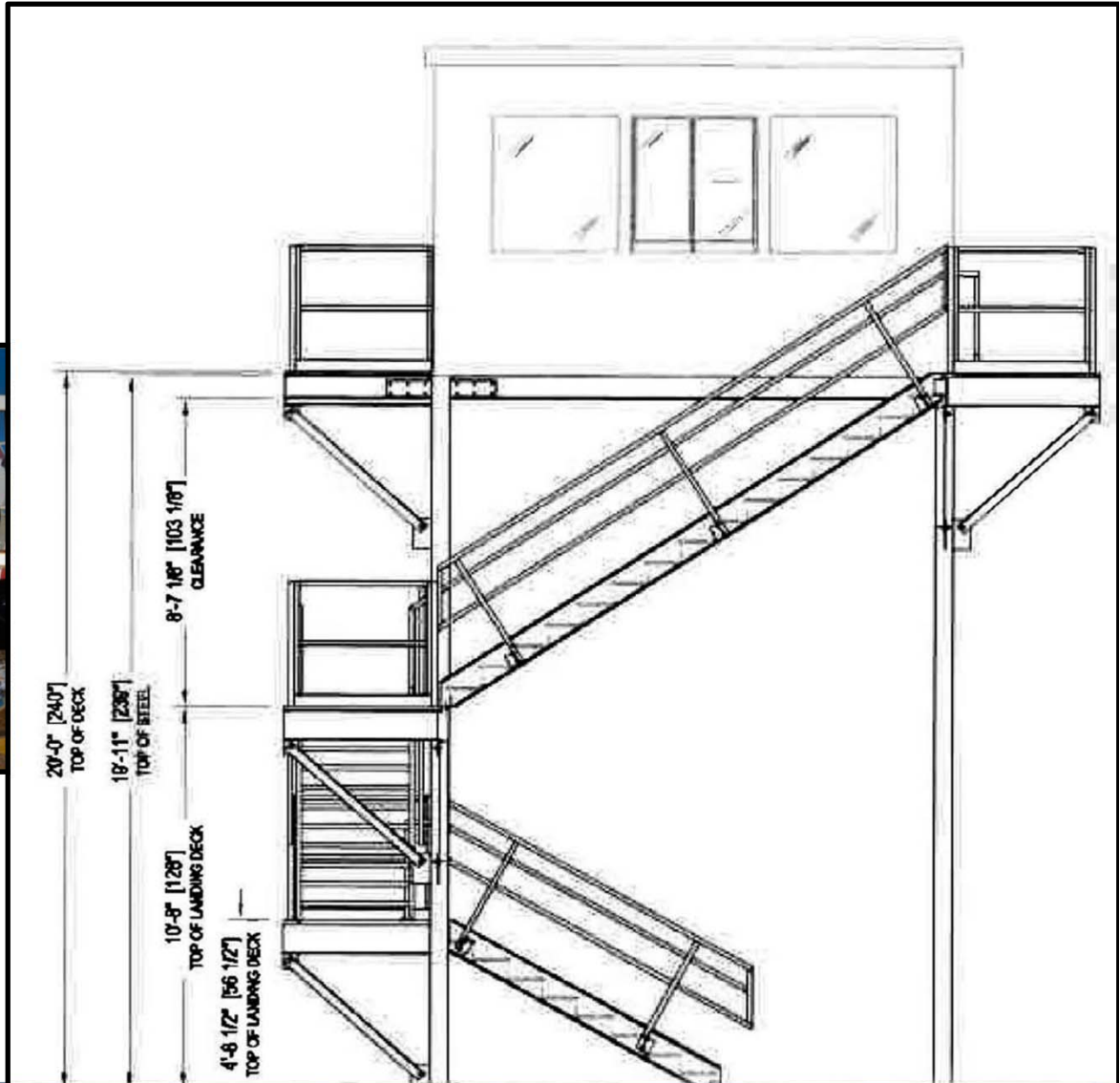


The Southern Ohio Diversification Initiative (SODI) will receive the proceeds from the recycling effort and will use it for economic development in the local community.



OSWDF CONSTRUCTION-

Observation Tower

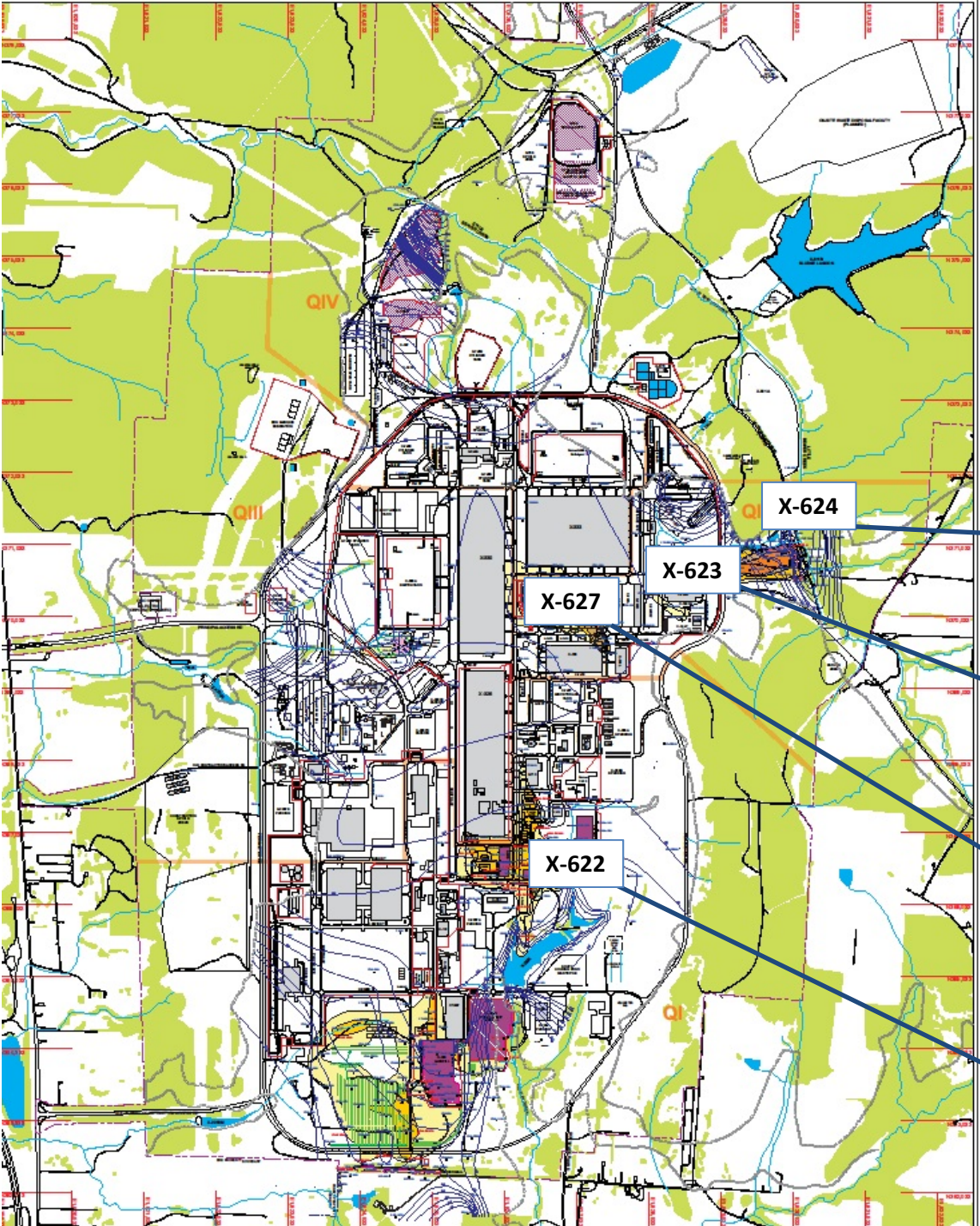




Groundwater Cleanup



Groundwater Cleanup



Groundwater Treated FY18-Nov.	Groundwater Source	TCE Removed FY18-Nov. lbs.
Gallons 933,700	X-701B Plume	33.07
Gallons 1,440	Misc. Site	0.00
Gallons 3,800,799	7-Unit Plume	48.69
Gallons 6,410,300	5-Unit & X-749/ X-120 Plumes & PK Drainage	8.18



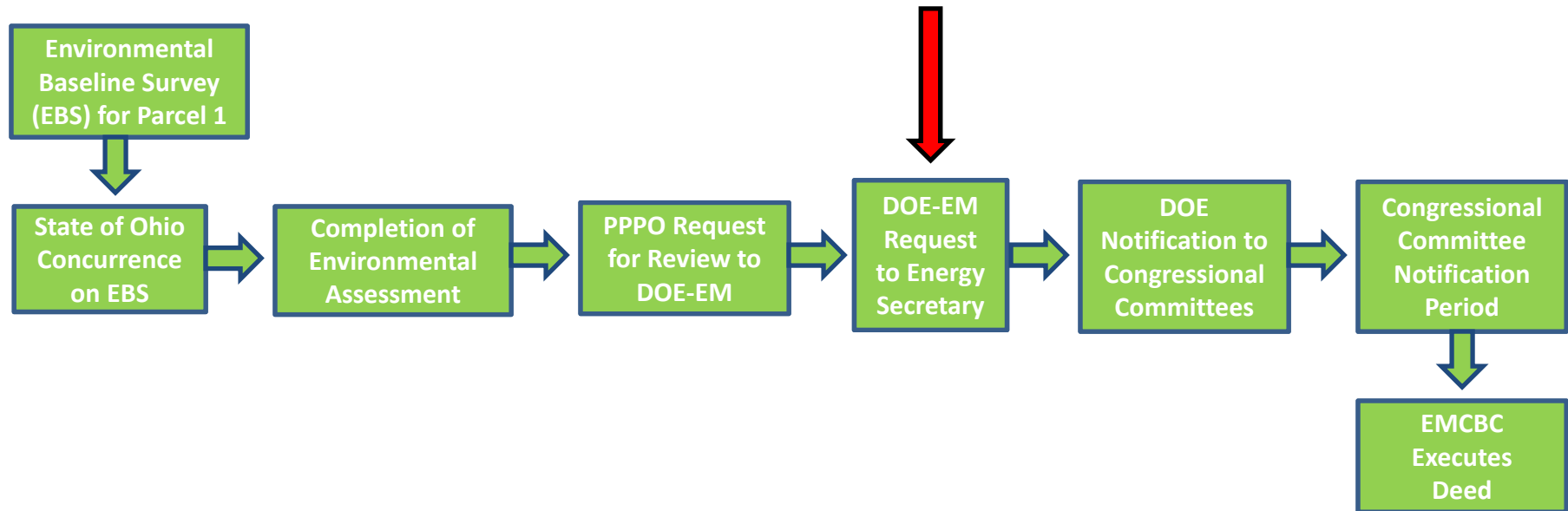
Future Use – First Property Transfer

- Parcel 1 Property Transfer package delivered to DOE-HQ in November
- Parcel 1 is about 80 acres and is scheduled for transfer to SODI in Spring 2018
- Requires DOE-HQ and Congressional approval
- Property a component of future reindustrialization
- Following DOE approval, congressional notification will follow
- Communication with Ohio EPA on Parcel 2 under way





Future Use – First Property Transfer



This is a high level overview of key steps in the property transfer process as outlined by 10 CFR 770 – Transfer of Real Property at Defense Nuclear Facilities for Economic Development.





Depleted Uranium Hexafluoride (DUF6) Conversion Plant Update





Site Tours



Pike County Commissioners

To register for the public tours,
please contact Sandy Childers
sandy.childers@fbports.com or
740-897-2336.



Carr D&D Employee Tours



Mutual Aid –FY2018



FBP Fire Services provided over 6,000 gallons of water from our water system, Fire Hydrants, to support the Structure Fire on Big Run Road, (South Access) on the evening of 1/23/2018.

Off-Site Requests FY2018	
Vehicle Accidents	3
Structure Fires	3
Other Fires	3
HazMat Response	2
Medical	11
Total	22



Educational Outreach

USW Provides Radiation Control Technician Training



← ASER Presentation at Eastern High School

FBP is Now Taking Applications for S.T.E.M. Scholarships
Contact Deneen Revel at deneen.revel@fbports.com with questions.



Community Outreach



14th Street Community Center



Pike County Children Services



Christmas Gifts for Children



Ross County Child Protection





Upcoming Outreach Events

- Science Bowl VI
Friday, March 9, 2018
- SSAB Full Board Meeting
Thursday, May 3, 2018

*For a full list of SSAB activities, check out the website at
<http://www.ports-ssab.energy.gov>*

