



Ongoing Efforts to Assure Waste Disposal Capacity for the Oak Ridge Reservation

Brian Henry, Y-12 Portfolio Federal Project Director
Oak Ridge Office of Environmental Management

April 11, 2018

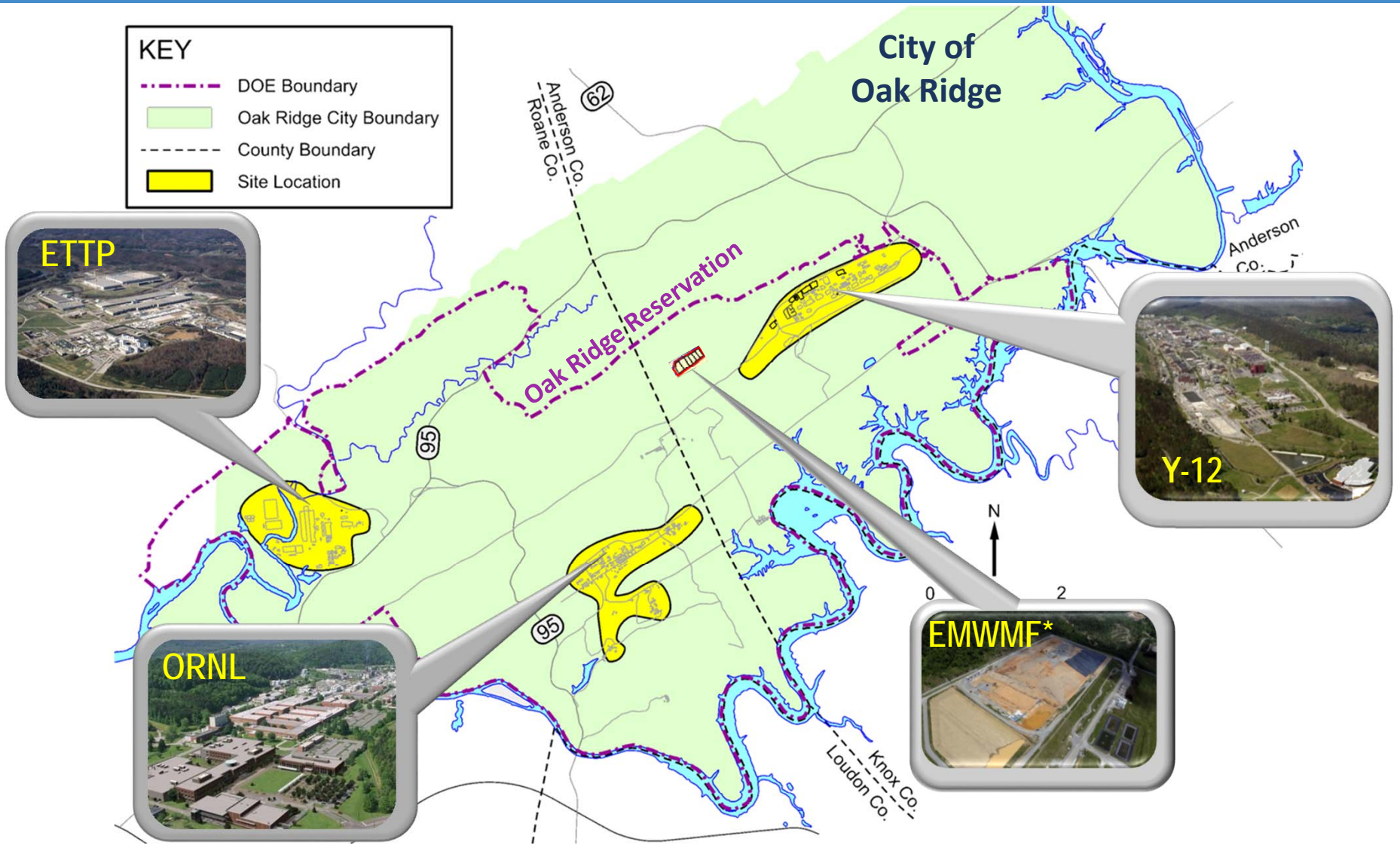
Current and planned disposal capacity sufficient to meet needs



Oak Ridge Reservation (ORR) Landfills/Waste Disposal Facilities

- DOE operates several engineered landfills for safe and compliant disposal of ORR remediation, demolition, and sanitary waste
- Operating landfills are permitted by Tennessee Division of Solid Waste Management
- Environmental Management Waste Management Facility (EMWMF) and planned Environmental Management Disposal Facility (EMDF) fall under the regulatory requirements of the Comprehensive Environmental Response, Compensation, and Liability Act (CERCLA)
- Each landfill/waste disposal facility has established waste acceptance criteria to determine whether waste is acceptable for disposal



Oak Ridge Reservation



* Environmental Management Waste Management Facility

Landfills/EMWMF are located near the Y-12 National Security Complex



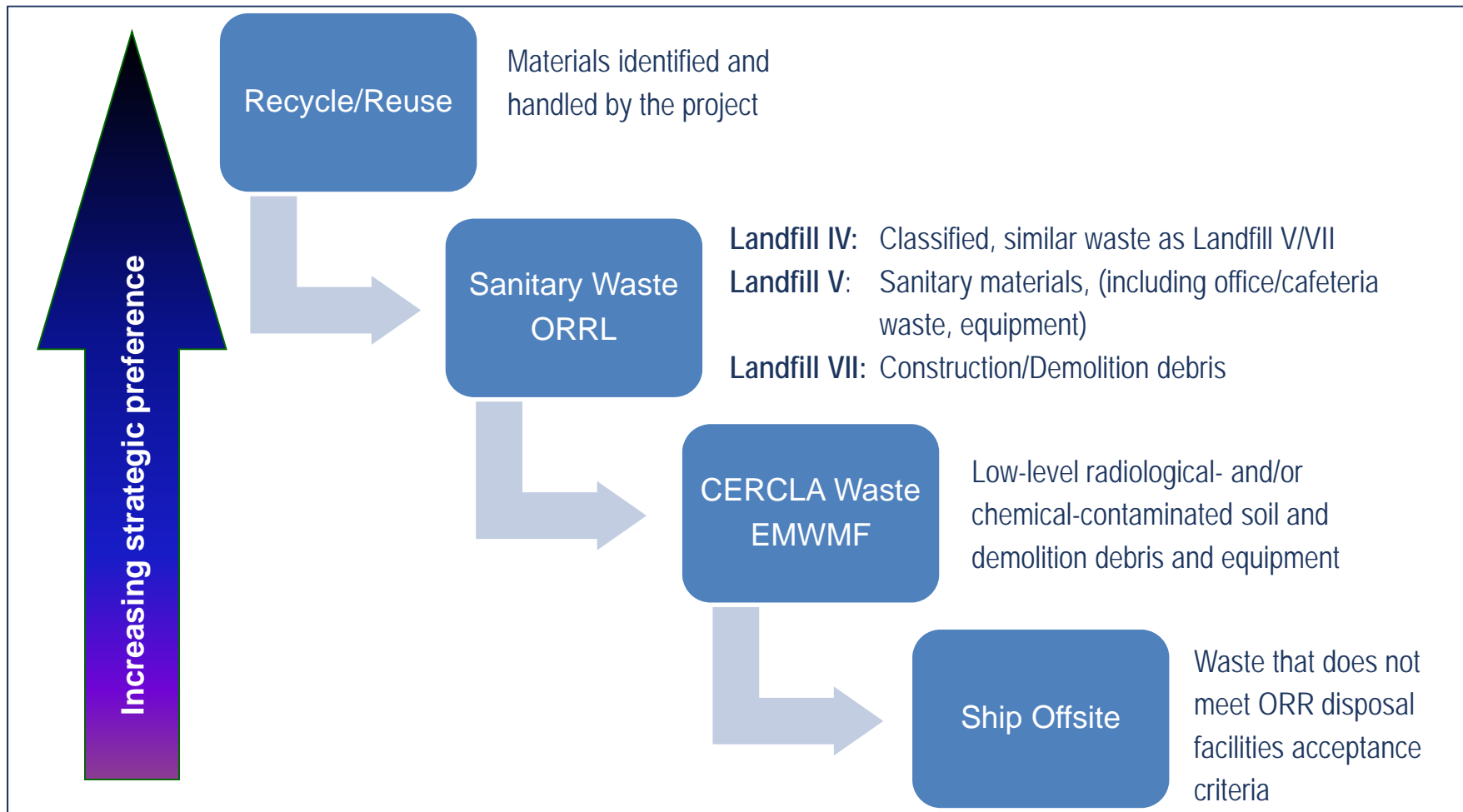
-  Operational Facilities
-  Closed Facilities

Different disposal facilities available for different waste streams



Waste Disposal Facility	Type	Waste Received
Construction/Demolition Landfill VII	TDEC Permit	Nonradiological and nonhazardous Construction/Demolition debris
Industrial Landfill IV	TDEC Permit	Classified, sanitary industrial waste (including office waste, equipment, construction/demolition debris)
Industrial Landfill V	TDEC Permit	Sanitary industrial waste (including office/cafeteria waste, equipment, construction/demolition debris)
EMWWMF	CERCLA	Low-level radiological and/or chemical soil and demolition debris, equipment, and cleanup waste
EMDF	CERCLA	In planning process (similar types of waste as EMWWMF)

Waste disposal decisions follow waste hierarchy



Remaining capacity supports completion of East Tennessee Technology Park cleanup



EMWMF (Low-level CERCLA Cleanup Waste)

- 28-acre disposal facility, opened in 2002
- Lined disposal cells receive low-level radiological and chemical waste from CERCLA cleanup of ORR and associated sites
- Approximate total capacity of 2.18 million cubic yards
 - Planned final cap redesign will increase capacity to approximately 2.3 million cubic yards
 - Currently about 75% full



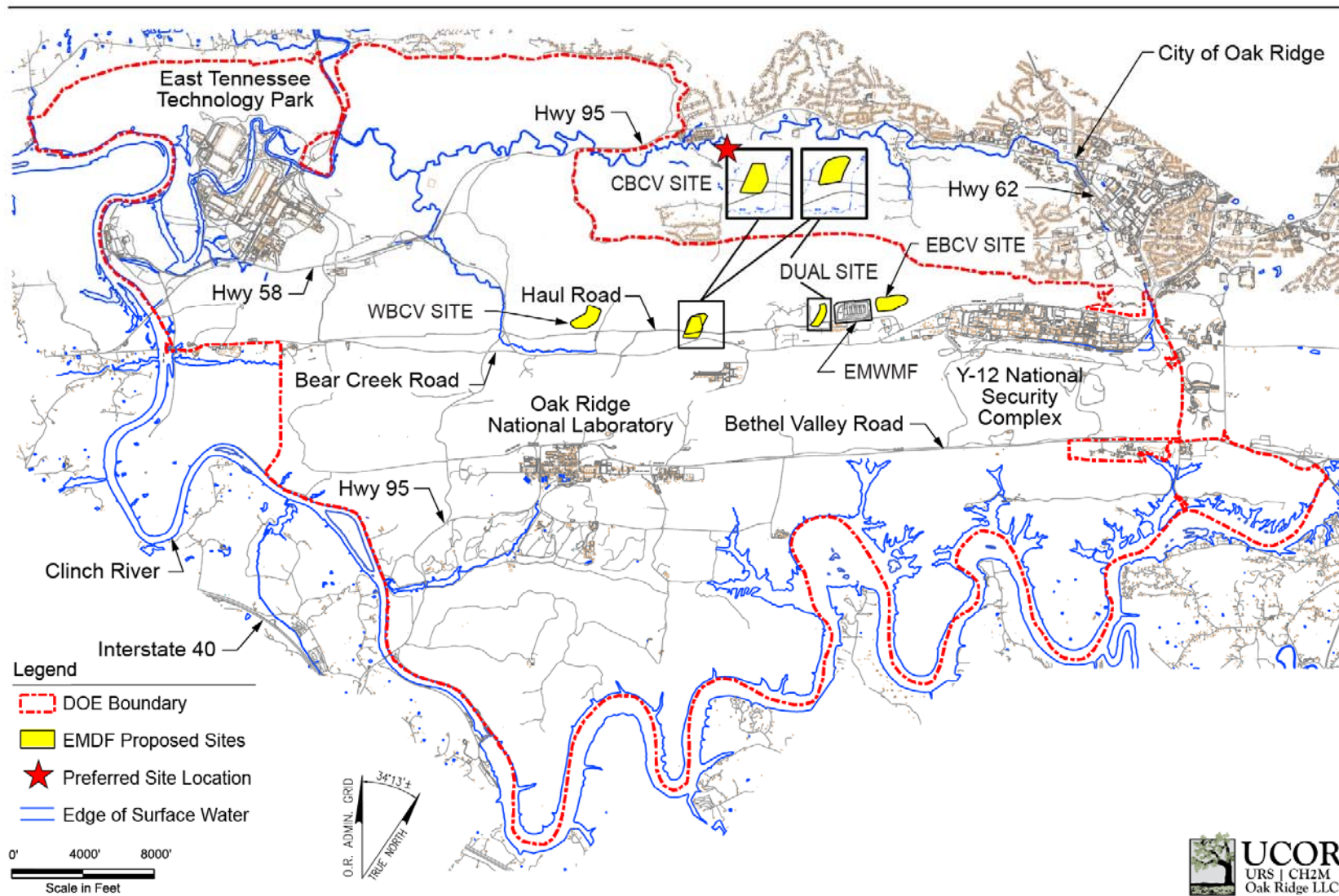
Future capacity needed for Y-12 and ORNL CERCLA cleanup



EMDF (Low-level CERCLA Cleanup Waste)

- Preferred site is located at Central Bear Creek Valley
- Currently conducting characterization at preferred site
- Projected disposal capacity is 2.2 M yd³
- Proposed Plan to be presented to the public this summer
- Operational overlap of two years with EMWMMF

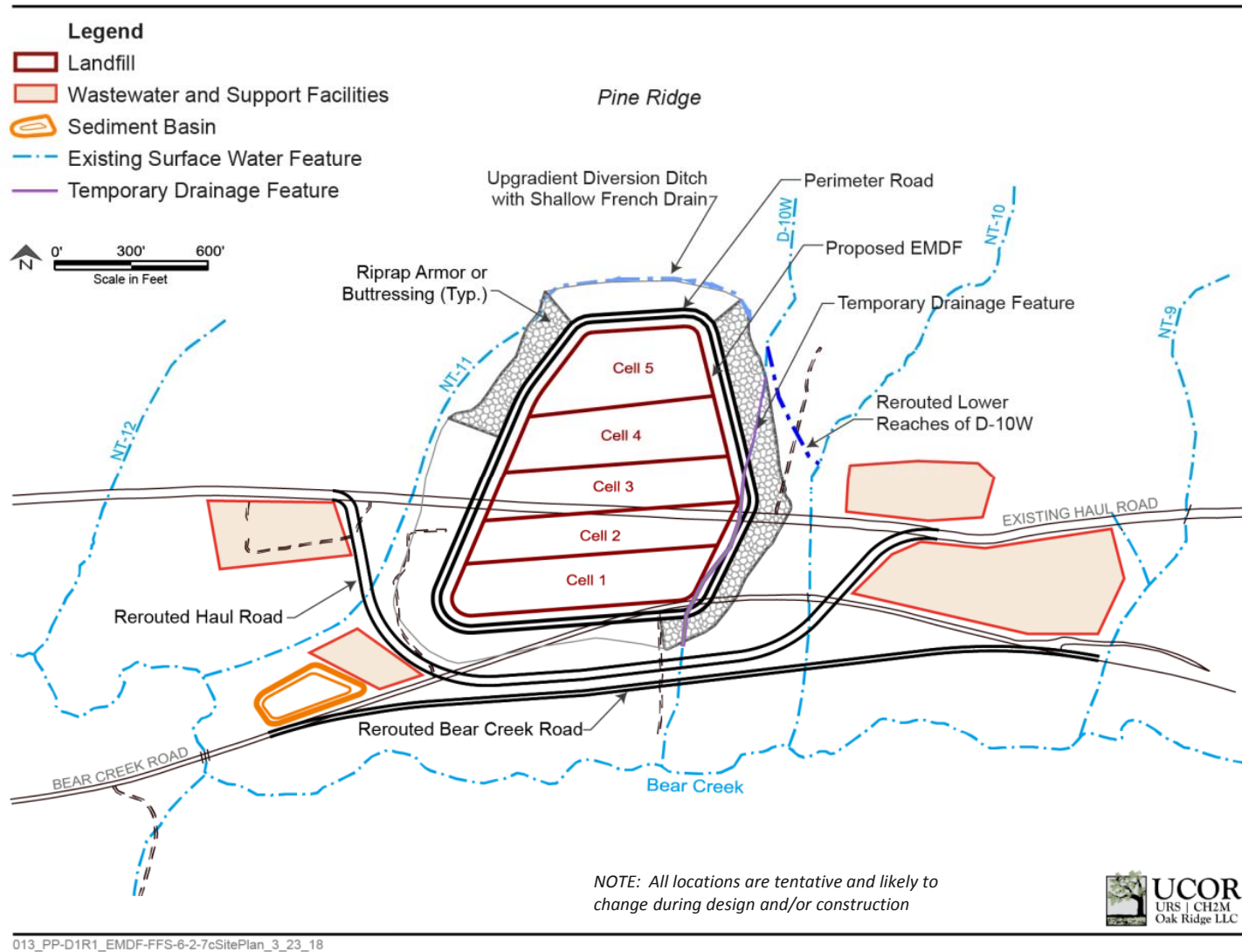
Proposed sites for the Environmental Management Disposal Facility



011_PP_OnsiteDispCandSites_3_23_18.ai



Conceptual design work has been done to evaluate Central Bear Creek Valley site



Conducting characterization at Central Bear Creek Valley site



Adequate On-site Waste Disposal Capacity is essential for the successful cleanup of Y12 and ORNL



- Public comment period on the Proposed Plan expected this summer
- Public comments will be considered by DOE, TDEC, and EPA in the decision making process resulting in the Record of Decision in early 2019
- Responses to public comments will be provided in the Record of Decision

QUESTIONS?