

Hurricane Harvey - 2017

Charles R Brower III, PE
AEP Texas



Hurricane Harvey Statistics

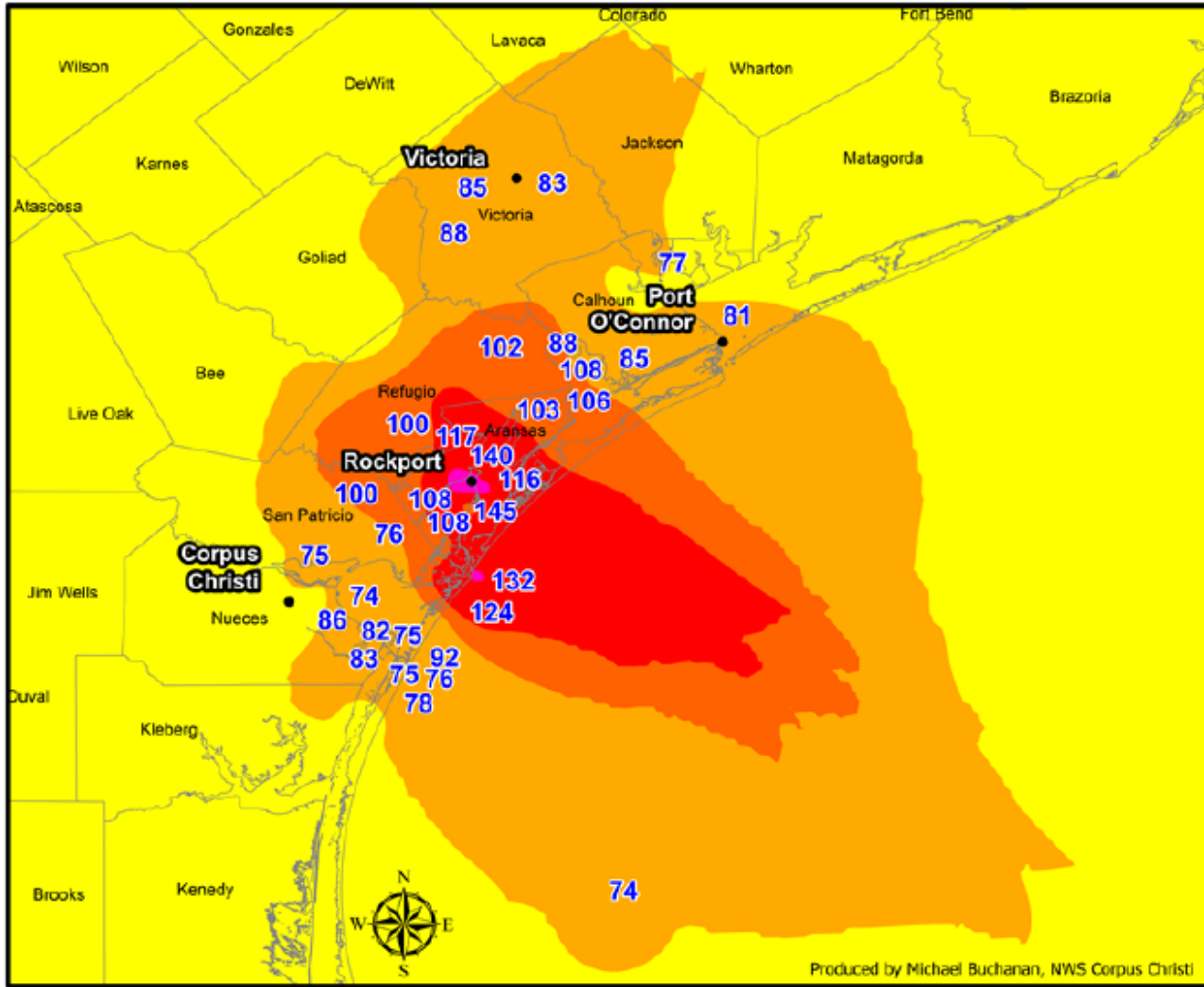
- Last Category 4 hurricane to hit Texas – Carla 1961
- From Tropical Depression to a major hurricane in 40 hours
- 145 MPH Peak Wind Gust - Rockport
- 12.5 foot Storm Surge – Port Aransas
- 71% Customers outaged in Corpus Christi District

Hurricane Harvey Statistics

Source: NOAA/NWS *Information in the images below are preliminary*

Hurricane Harvey Peak Wind Gusts - Aug 25-29, 2017

Category - 4



- Wind Gusts (mph)**
- 39-73 (TS)
 - 74-95 (Cat 1)
 - 96-110 (Cat 2)
 - 111-129 (Cat 3)
 - 130-156 (Cat 4)

Hurricane wind gusts are highlighted in blue.

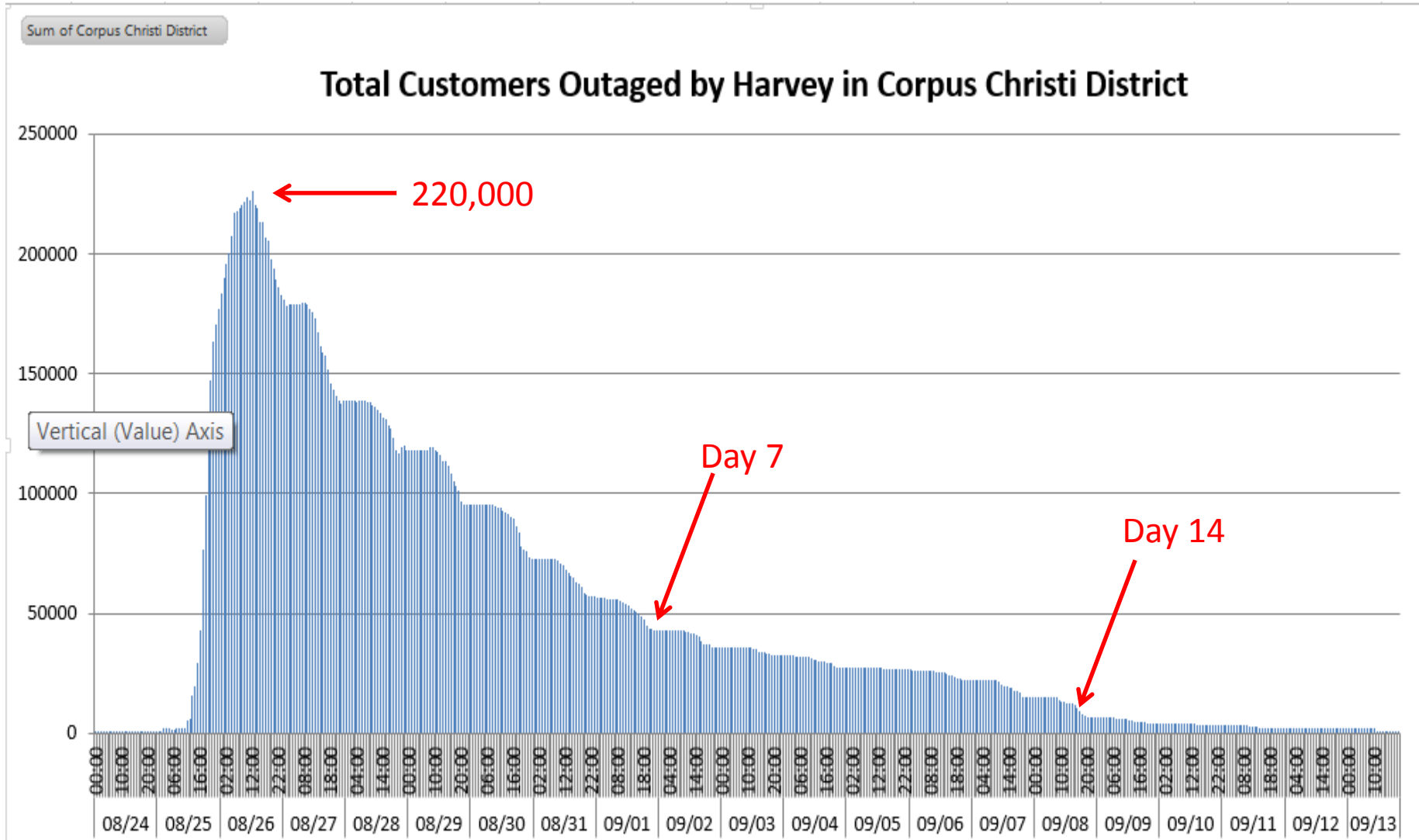


Produced by Michael Buchanan, NWS Corpus Christi

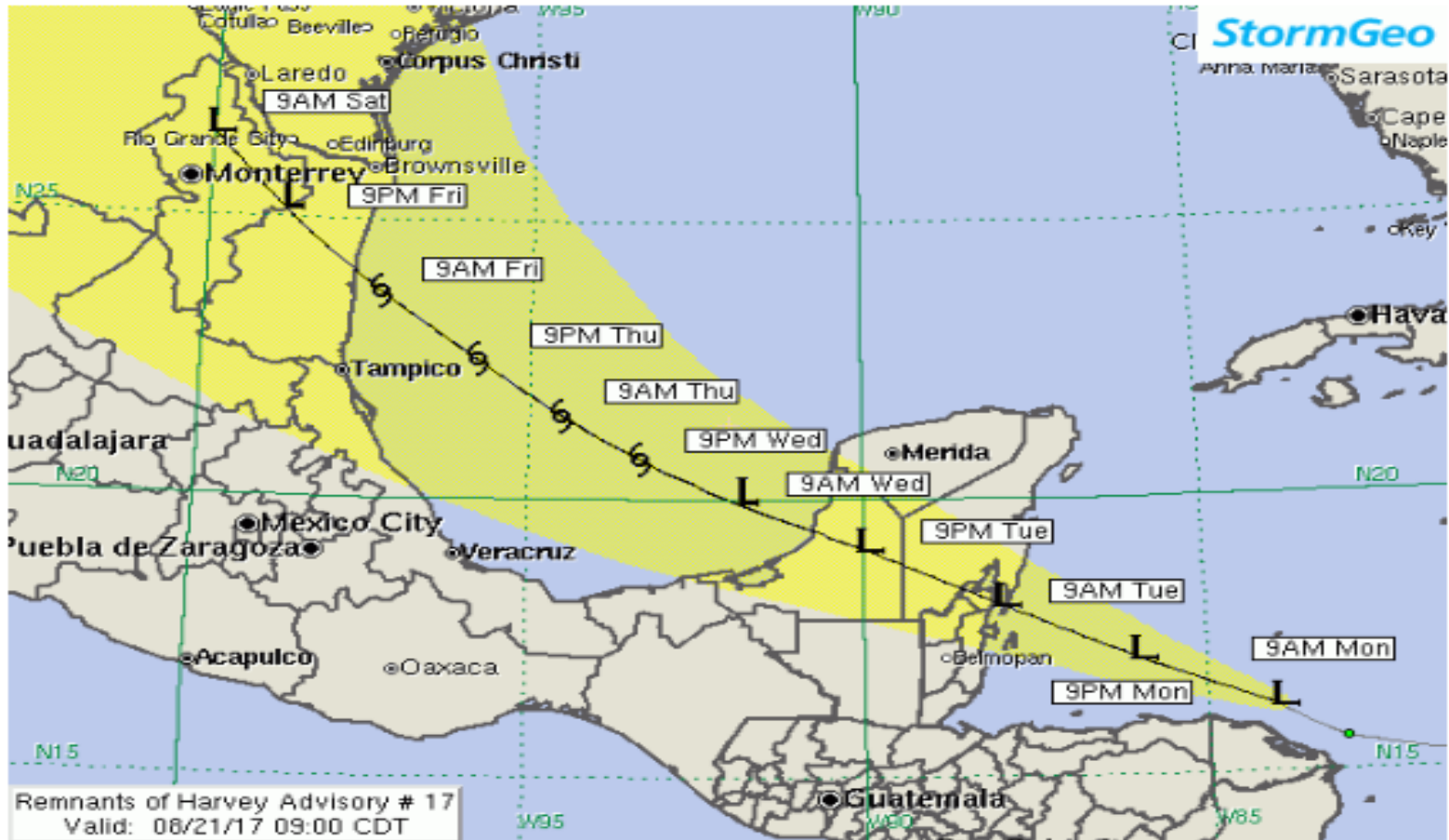
0 5 10 20 30 40 Miles

Source: Post Tropical Cyclone Reports from NWS WFOs CRP, BRO, EWX, and HGX

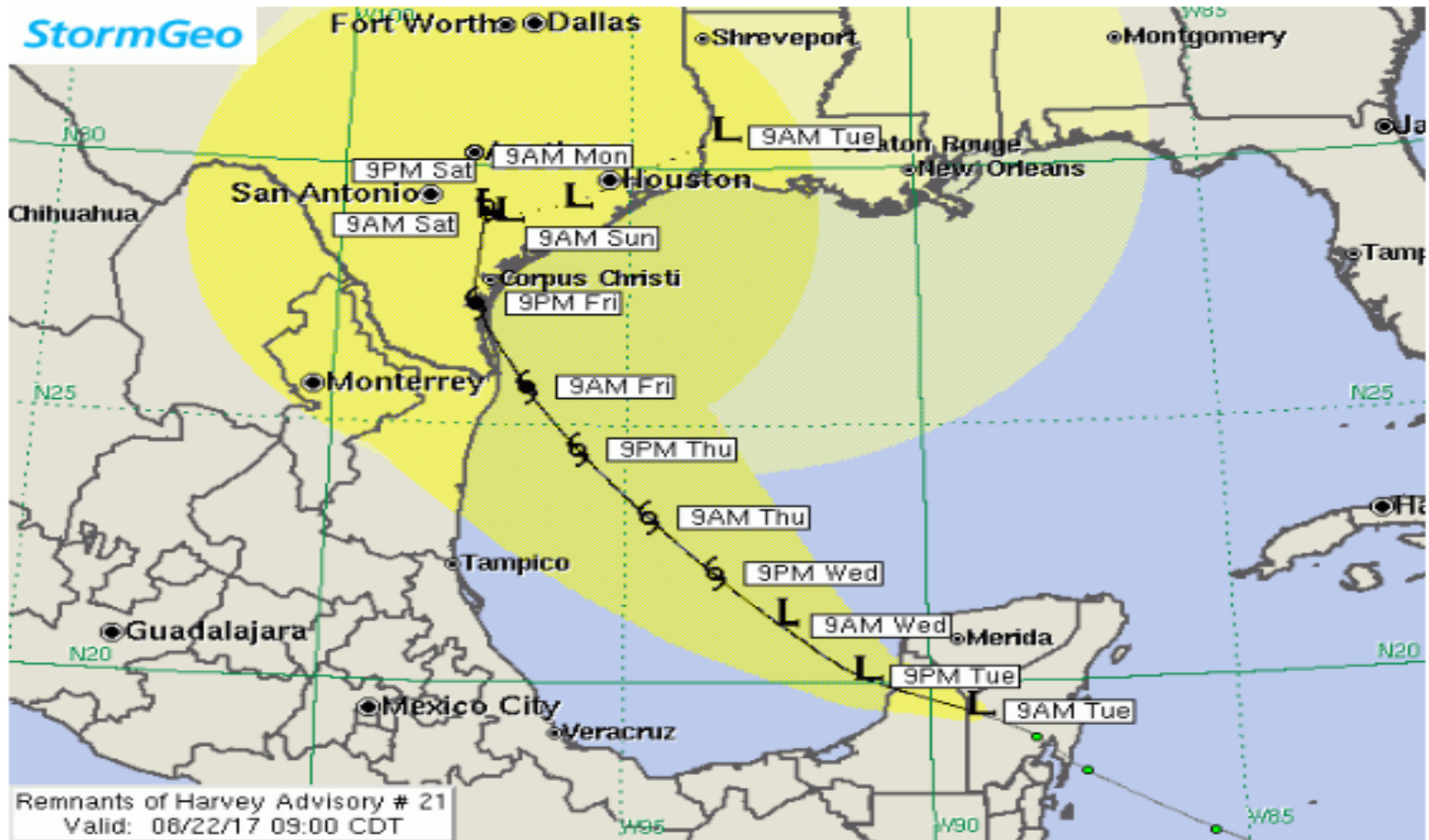
Hurricane Harvey Statistics



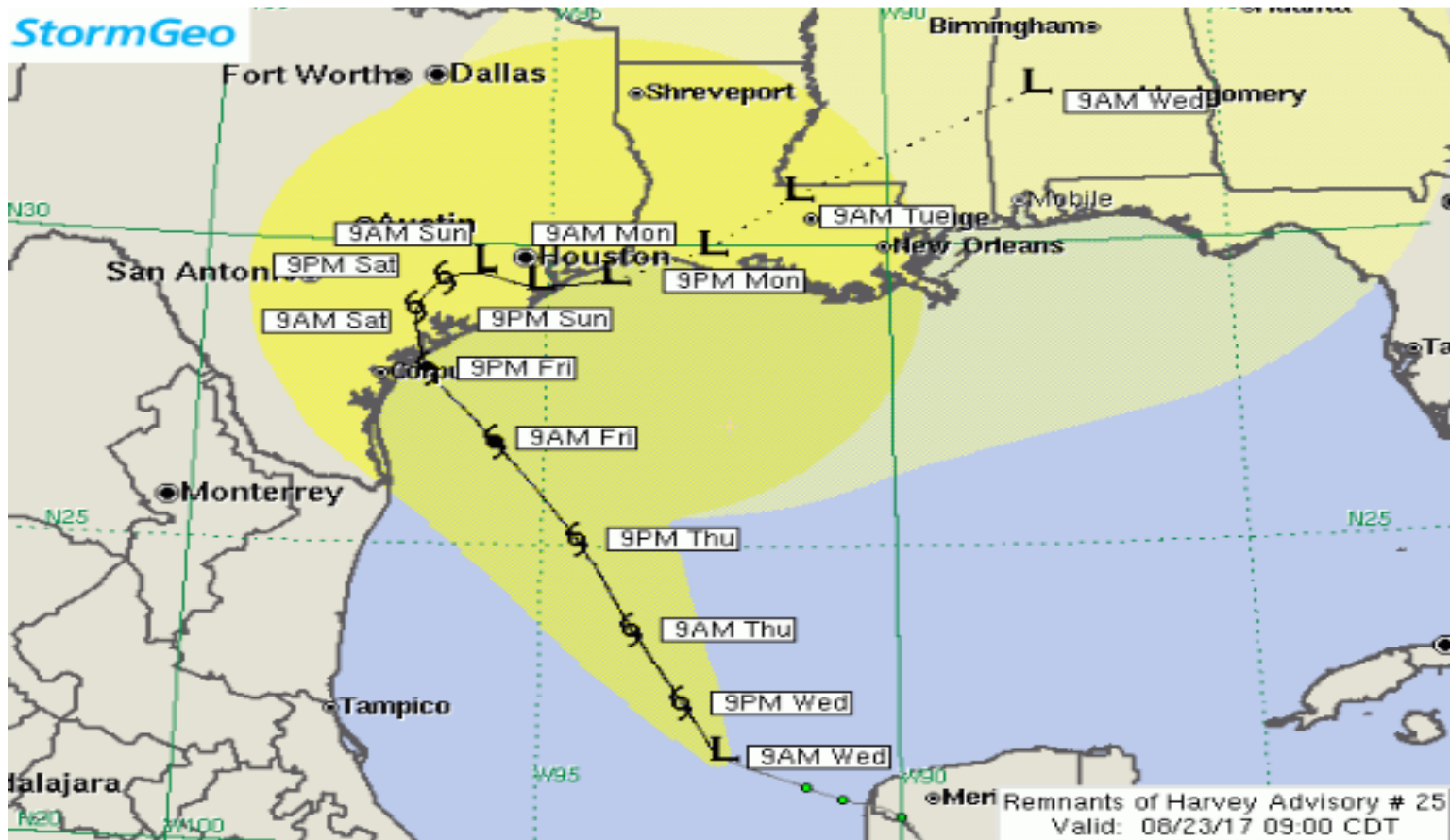
Aug 21 – Four Days before Landfall – Northern Mexico – Tropical Storm



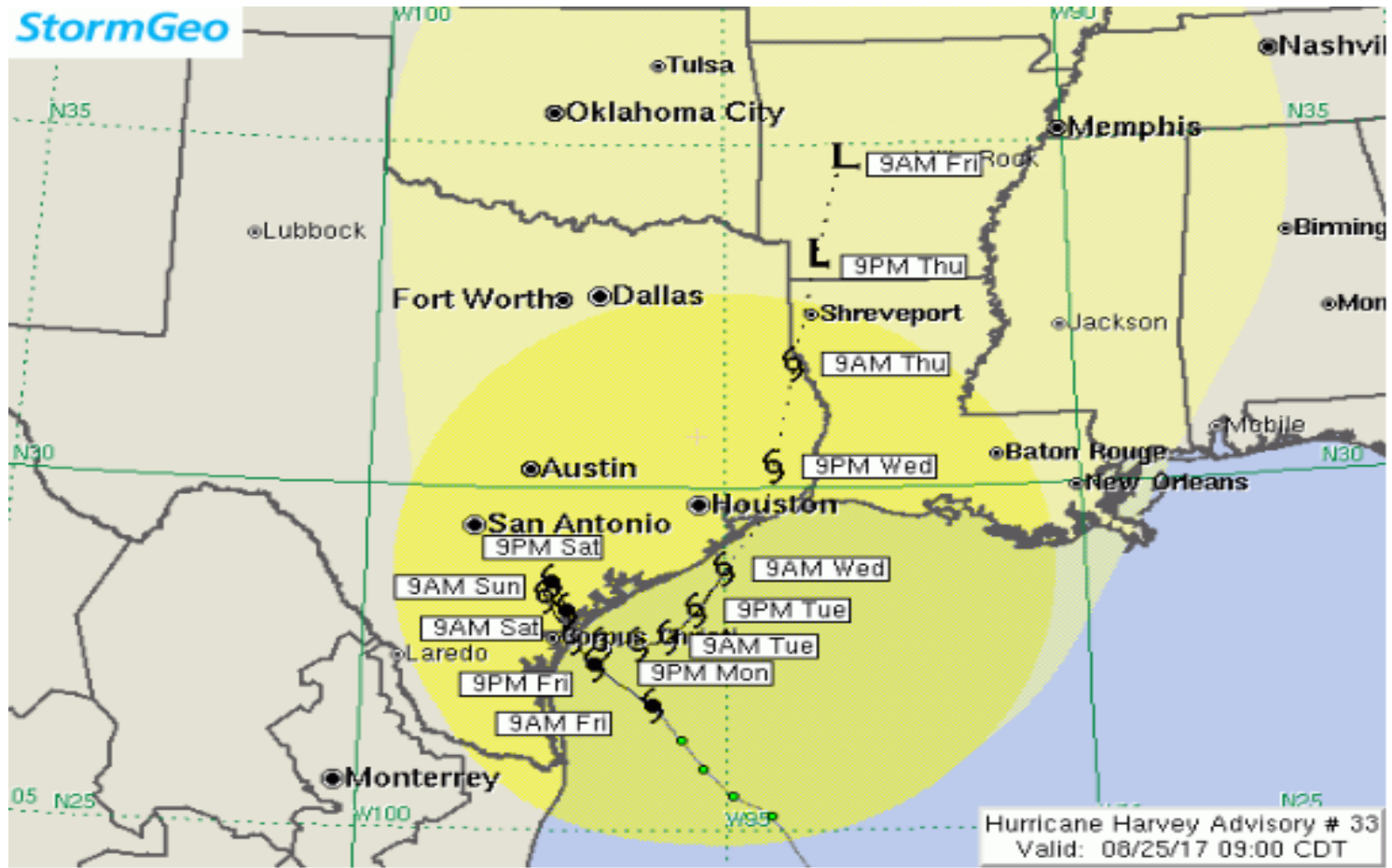
Aug 22 – Three Days before Landfall – South of Corpus Christi – Cat 1



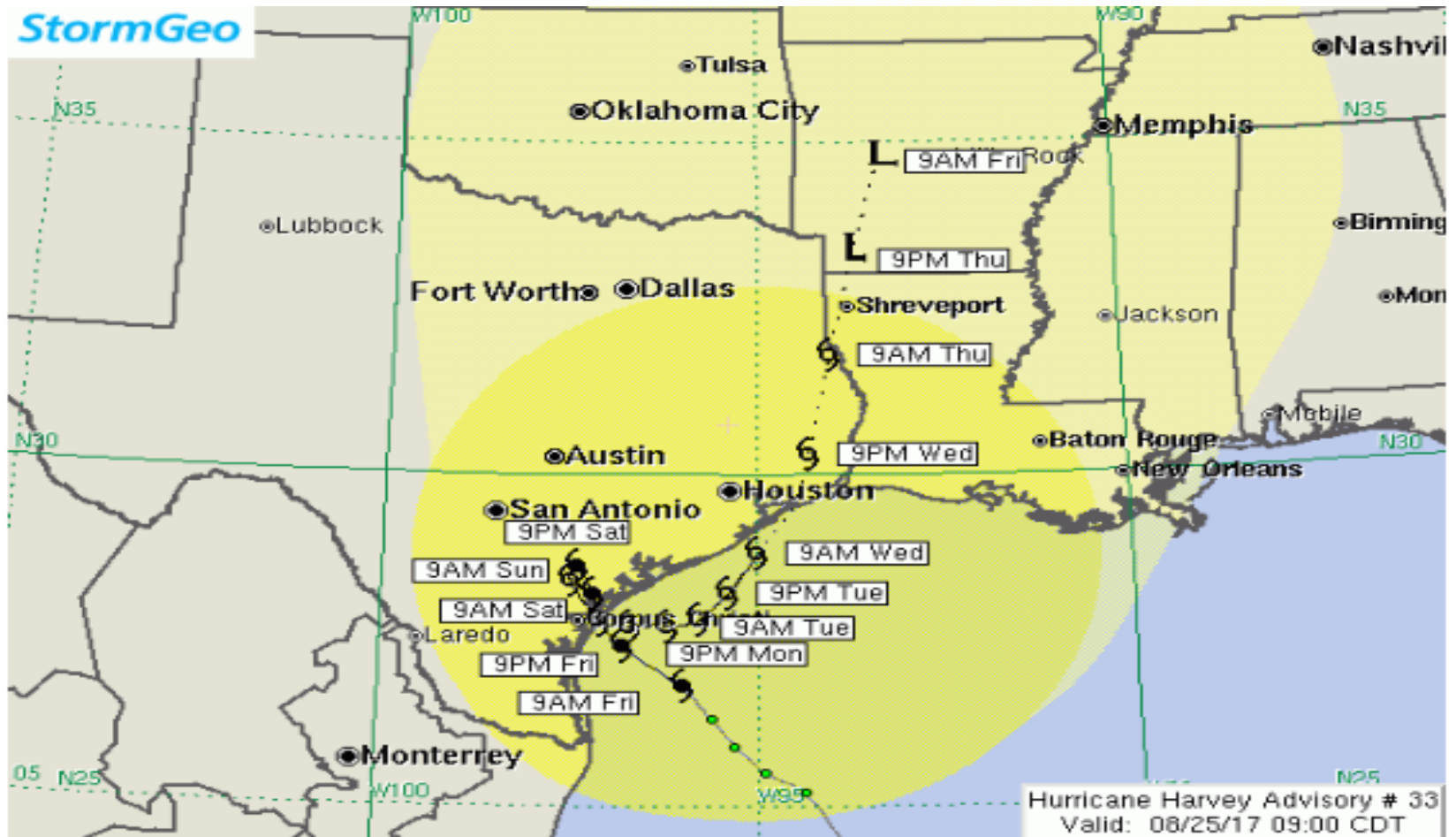
Aug 23 – Two Days before Landfall – North of Corpus Christi – Cat 1



Aug 24 – Day before Landfall – Corpus Christi – Cat 2



Aug 25 – Day of Landfall – Port Aransas – Cat 3



Hurricane Harvey Actual Track



Other Participants in the Restoration Effort

AEP Ohio	Disaster Resource Group	Pike Electric
AEP Appalachian Power	Empire District	Plaska
AEP Indiana Michigan Power	Evers Electric	Powerline Services
AEP Kentucky Power	Excel Energy	Power Secure
AEP Public Service Company of Oklahoma	Great Southwestern	ProForce
AEP Southwestern Electric Power Company	Hargrave Power Inc.	QUALITY POWER LINE
5 Star	Higher Power	Quanta Utility Services
Ameren Illinois	Hugo Garcia Electric	Quantum Hargrove
Ameren Missouri	INTREN Inc.	R&J Environmental
Asplundh	Irby Construction	RS Electric Utility Services
Associated Diversified Services	J F Electric Inc.	Safety Management Group (SMG)
Austin Energy	James Power Line	SAM Flight Operations
B&B Utility Contractors	Kansas City Power & Light	Service Electric Company
BBC Electric	Lewis Tree Service	SEC - Southern Electric Corp.
BHI Energy	LineTec	Storm Services
Base Logistics	Louisville Gas & Electric - Kentucky Utilities	Sumter Utilities
Bird Electric	LPE, Inc.	Sun Coast Resources
Bison Electric	Mammoth	SUN TECH ELECTRICAL
CANFER	MasTec	T&D Solutions LLC
Centerpoint	Mesa Line Services	Tech Serv Consulting
Chain Electric Company	MYR Group	Texas New Mexico Power
City Public Service	OG&E Electric Services	UC Synergetic
CT Drilling & Construction	Oncor Electric Delivery	Westar
Davey Resource Group	One Source Restoration	Willbros T&D Services
Davey Tree Company	One Source T&D	William E Groves Construction Inc.
David H. Elliot Company	Par Electrical Contractors	Wright Tree Services

Also, many thanks to Midwest Mutual assistance Group, Texas Mutual Assistance Group and Southeastern Electric Exchange

Restoration Challenges





To address these challenges, specialized equipment and technology, such as drones, ATVs, pictometry and helicopters were utilized during the assessment and restoration efforts.

Transmission Line Damage

345kV line structures down



Substation Damage

Tatton 69-12kV substation – Approximately 15 Miles to Gulf



Distribution Damage



Thanks

Questions?

