



Cheniere Energy, Inc.  
 700 Milam Street, Suite 1900  
 Houston, Texas 77002  
 phone: 713.375.5000  
 fax: 713.375.6000

RECEIVED

September 30, 2016

DOE/FE VIA EMAIL 09/30/2016

U.S. Department of Energy  
 Office of Fossil Energy Natural Gas Regulatory Activities  
 Attention: Larine Moore, Docket Room Manager  
 Docket Room FE-34  
 P.O. Box 44375  
 Washington, DC 20026-4375

Re: Sabine Pass Liquefaction, LLC  
 DOE Semi-Annual Report  
 DOE/FE Order Nos. 2833, 2961-A, 2961-C, 3306, 3307, 3384, 3442, 3595, 3669, 3669-A and 3792  
 FE Docket Nos. 10-85-LNG, 10-111-LNG, 13-30-LNG, 13-42-LNG, 13-121-LNG, 14-31-LNG, 14-92-LNG and 15-63-LNG

Dear Ms. Moore:

Pursuant to the above-referenced Orders, Sabine Pass Liquefaction, LLC (“Sabine Pass”), herein submits documents describing the progress of the Sabine Pass Liquefaction Project (“Project”) for March 1, 2016 through August 31, 2016. Please refer to Table 1 below for a summary of activities and Attachment A for the Monthly Reports submitted to Federal Energy Regulatory Commission (“FERC”) under FERC Docket Numbers CP11-72-000, CP13-2-000, CP13-552-000 and CP15-482-000 during the reporting period.

Sabine Pass Liquefaction Project	
Construction Report for Period: March 1, 2016 through August 31, 2016	
Area	Comments
Liquefaction Stage 1 Area – Train 1	<ul style="list-style-type: none"> <li>Achieved Substantial Completion and turned over Care, Custody and Control to Cheniere on May 27, 2016.</li> </ul>
Liquefaction Stage 1 Area – Train 2	<ul style="list-style-type: none"> <li>Completed leak checks on the Feed Gas, Fuel Gas, Wet and Dry Flare, and Hot Oil Systems.</li> <li>Introduced Fuel Gas into the Train.</li> <li>Commissioned the Thermal Oxidizer and circulated Hot Oil.</li> <li>Completed pipe insulation.</li> <li>Completed transferring refrigerants into the unit.</li> <li>Completed dryout of the unit using nitrogen.</li> <li>Continued general punch-list work-off items.</li> <li>Completed loading of first cargo.</li> <li>Continued with Commissioning Demonstration Tests (CDTs).</li> </ul>

**Sabine Pass Liquefaction Project**  
**Construction Report for Period: March 1, 2016 through August 31, 2016**

Area	Comments
Liquefaction Stage 2 Area – Train 3	<ul style="list-style-type: none"> <li>• Energized the Compressor Substation.</li> <li>• Energized the Propane Substation.</li> <li>• Continued A/G pipe installation, testing, air blows and restoration.</li> <li>• Continued cable pulls and conduit, instrument, and tubing installation.</li> <li>• Continued compressor lube oil and synthetic oil flushes.</li> <li>• Continued to bump and run motors.</li> <li>• Completed cold cranks for both propane and methane machines.</li> <li>• Completed interlocks and introduced fuel gas.</li> <li>• Completed setting of Compressor Gas Turbine Stacks and Waste Heat Recovery Units.</li> </ul>
Area – Train 4	<p>Recovery Units.</p> <ul style="list-style-type: none"> <li>• Continued A/G pipe installation, testing, air blows and restoration.</li> <li>• Continued cable pulls and conduit, instrument, and tubing installation.</li> <li>• Commenced loop checks.</li> <li>• Continued erection of structural steel in the compressor and refrigeration</li> </ul>
OSBL Stage 2	<ul style="list-style-type: none"> <li>• Energized the Utility Substation.</li> <li>• Air Compressors and Nitrogen package were put into service.</li> <li>• Fire Water Distribution and Hydrants were put into service.</li> <li>• Continued A/G pipe testing, air blows and restoration.</li> </ul>
Support Buildings	<ul style="list-style-type: none"> <li>• Warehouse – Substantial Completion achieved on April 11, 2016.</li> <li>• Maintenance Building – Substantial Completion achieved on April 11, 2016.</li> <li>• RFTC Building – Substantial Completion achieved on April 11, 2016.</li> </ul>
Access Roads, Waterline	<ul style="list-style-type: none"> <li>• Substantial Completion achieved on April 29, 2016.</li> </ul>
Laydown, Staging Areas	<ul style="list-style-type: none"> <li>• No activities.</li> </ul>
Construction Dock (Ro- Ro)	<ul style="list-style-type: none"> <li>• Received and offloaded equipment at the construction dock.</li> </ul>
Revamp Area	<ul style="list-style-type: none"> <li>• No activities.</li> </ul>
Condensate (CP13-2-000)	<ul style="list-style-type: none"> <li>• In Service.</li> </ul>

**Sabine Pass Liquefaction Project**  
**Construction Report for Period: March 1, 2016 through August 31, 2016**

Area	Comments
Stage 3 (CP13-552-000)	<ul style="list-style-type: none"><li>• Completed excavation of the amine sump.</li><li>• Continued underground firewater and amine pipe assembly and installation.</li><li>• Completed foundation installation in cryogenic rack and propane refrigeration foundation.</li><li>• Installing foundations in compressor area, hot oil, propane condenser rack, propane refrigeration, compressor substation, mercury removal, and water treatment areas.</li></ul>
East Meter Pipe (CP15-482-000)	<ul style="list-style-type: none"><li>• Preparing for Tie-In.</li></ul>

Should you have any questions about this filing, please contact the undersigned at (713) 375-5000.

Thank you,

/s/ Eryn Pullin

Eryn Pullin  
Sabine Pass Liquefaction, LLC

Sabine Pass Liquefaction, LLC DOE Semi-  
Annual Report

DOE FE Order Nos. 2833, 2961-A, 2961-C, 3306, 3307, 3384, 3442, 3595,  
3669, 3669-A and 3792

FE Docket Nos. 10-85-LNG, 10-111-LNG, 13-30-LNG, 13-42-LNG, 13-121-LNG,  
14-31-LNG, 14-92-LNG and 15-63-LNG

**Attachment A**

# **SABINE PASS LIQUEFACTION PROJECT**

Cameron Parish, Louisiana

Monthly Progress Report

March 2016

## Table of Contents

1.0	Executive Summary.....	2
2.0	Project Highlights .....	2
3.0	Environmental, Safety, and Health Progress .....	3
4.0	Schedule.....	3
5.0	Construction.....	4
6.0	Permitting and Environmental.....	7
7.0	Progress Pictures.....	8

## 1.0 Executive Summary

This report covers activities of the Sabine Pass Liquefaction Project, Stages 1 – 3 that occurred during the month of March 2016.

Stage 1 Engineering and Procurement are 100% complete. Subcontract and direct hire construction work are 91.0% and 97.8% complete, respectively. Stage 1 overall project completion is 98.3% against the plan of 99.6%.

Stage 2 Engineering and Procurement are 100% complete. Subcontract and direct hire construction work are 54.7% and 66.5% complete, respectively. Overall project completion for Stage 2 is 83.8% against the plan of 91.0%.

Stage 3 Engineering is now 59.1% complete. Procurement is now 45.1% complete. Subcontract and direct hire work are 24.2% and 0.4% complete, respectively. Stage 3 overall project completion is 28.8% against the plan of 19.6%.

Actual project progress supports the achievement of substantial completion for Trains 1 and 2 by late April 2016 and September 2016, respectively. Trains 3 and 4 targeted substantial completion dates are April 2017 and August 2017, respectively, with schedule recovery expected in the summer of 2016 as labor resource is transitioned from Stage 1 onto Stage 2.

## 2.0 Project Highlights

Stages 1 and 2 engineering and procurement are complete. Engineering and Procurement continue to support Stages 1 and 2 construction activities at the jobsite. For Stage 3, engineering continued issuing drawings for ISBL foundations and structural steel and began issuing AG and UG OSBL isos. Procurement continues to award major equipment and bulk materials. Fabrication is underway for mechanical equipment, steel and piping. The first ISBL spools have shipped, and the hot oil/amine spools delivery to site was completed.

During the month of March, subcontracts directed the following major subcontracts for Stage 1: onsite equipment insulation, piping insulation, fire and gas detection, fireproofing and erection/supervision of the installation of the refrigeration compressors. For Stage 2, subcontracts supervised field-erected tanks, busing, permanent telecommunications, non-destructive examination (NDE), fire and gas detection, equipment insulation, fireproofing and the supervision of the installation of refrigeration compressors. For Stage 3, subcontracts directed the soil improvement, piling and concrete batch plant subcontracts.

After loading the first LNG cargo, Train 1 shut down for seven days to clean strainers and restarted to resume the liquefaction process. Train 1 continued with fine tuning and troubleshooting for steady operation in preparation of the performance test in April. There were additional LNG cargo loadings throughout the month of March. Remaining work in Train 1 includes punch-list work-off and verification with Bechtel to agree upon substantial completion. Train 2 continued with piping installation with a focus on pipe pressure testing, air blows, and restoration in all remaining areas. All gas generators and dry gas seals have been installed. First fire and mechanical runs for both ethylene compressors were completed with piping restoration now underway. Mechanical, pipe testing, and loop check activities of the second methane and propane compressors are in progress with mechanical runs planned in April.

Stage 2 construction is well underway. In Train 3, the installation, testing, and restoration of aboveground piping are progressing in all available workfronts. Train 3 compressor lube oil

flushes are currently underway as well as the installation of dry gas seals. The Train 3 compressor substation is now energized with loop checks forecasted to commence in April. In Train 4, aboveground piping installation continued in all available workfronts. Installation of the Train 4 compressor area Gas Turbine Stacks and Waste Heat Recovery Units completed this period. The OSBL Utility Substation was energized during this reporting period.

Stage 3 soil stabilization and piling continued. Underground pipe assembly and testing began in March and installation is planned for April. Preparation for first concrete placement will commence in April with formwork and rebar activity. First concrete is projected to follow in May.

### 3.0 Environmental, Safety, and Health Progress

During the month of March, the following ES&H related events occurred.

	Near Miss		First Aid		Recordable		Lost Time	
	Month	ITD	Month	ITD	Month	ITD	Month	ITD
Bechtel	9	678	58	2352	0	74	0	10
Subcontractor	0	50	2	155	0	7	0	1
Total	9	728	60	2507	0	81	0	11

### 4.0 Schedule

Overall, Stage 1 project progress is 98.3% complete against a plan of 99.6%. Overall Stage 2 project progress is 83.8% complete against a plan of 91.0%. Stage 3 (Train 5) project progress is 28.8% complete against a plan of 19.6%.



## 5.0 Construction

Area	Construction Activities in March	Planned Work for April
Liquefaction Stage 1 Area – Train 1	<ul style="list-style-type: none"> <li>• Completed the shutdown work to clean strainers, as well as other outage activities in preparation for performance testing.</li> <li>• Restarted liquefaction operation and continued with fine-tuning for stable operation.</li> </ul>	<ul style="list-style-type: none"> <li>• Continue with fine-tuning for stable operation and conduct various Commissioning Demonstration Tests (CDTs).</li> <li>• Conduct performance test.</li> </ul>
Liquefaction Stage 1 Area – Train 2	<ul style="list-style-type: none"> <li>• Continued steel punch-list work-off.</li> <li>• Continued AG Pipe installation and testing / air blow / restoration.</li> <li>• Continued with final lube oil flushes for the compressors.</li> <li>• Completed first fire and mechanical runs for both ethylene compressors and commenced pipe restoration.</li> <li>• Completed first fire on the first methane compressor.</li> <li>• Continued with loop checking.</li> <li>• Continued with electrical and instrumentation installation in all available areas.</li> <li>• Completed chemical cleaning of the amine piping system.</li> <li>• Continued with insulation.</li> <li>• Turned over the Amine and Gas Treatment systems to CSU.</li> <li>• Completed leak checks on the Feed Gas, Fuel Gas, Wet and Dry Flare, and Hot Oil systems.</li> <li>• Commissioned the Fuel Gas Heater and Thermal Oxidizer.</li> <li>• Introduced Fuel Gas into the Train.</li> </ul>	<ul style="list-style-type: none"> <li>• Continue with steel punch-list work-off.</li> <li>• Continue AG pipe testing / air blow / restoration.</li> <li>• Complete first fire and mechanical runs for both methane compressors.</li> <li>• Complete first fire and mechanical runs for both propane compressors.</li> <li>• Continue with loop checking.</li> <li>• Continue electrical and instrumentation installation in all available areas.</li> <li>• Continue insulation in all available areas.</li> <li>• Commence leak checks and commissioning of Amine and Gas Treatment systems.</li> <li>• Turnover Unit 15 and Unit 16 systems to CSU for function checks and leak checks.</li> <li>• Commence running the first ethylene compressor on nitrogen.</li> <li>• Commence perlite loading in cold boxes.</li> </ul>

Sabine Pass Liquefaction, LLC, Sabine Pass LNG, L.P. and Sabine Pass Liquefaction Expansion, LLC  
March 2016 Monthly Progress Report

Area	Construction Activities in March	Planned Work for April
Liquefaction Stage 2 Area – Train 3	<ul style="list-style-type: none"> <li>• Continued AG Pipe installation and testing / air blow / restoration.</li> <li>• Continued cable pulls and conduit installation.</li> <li>• Continued instrument and tubing installation.</li> <li>• Continued installation of the compressor area roof.</li> <li>• Continued steel punch-list work-off.</li> <li>• Continued compressor lube oil flushes.</li> <li>• Commenced the installation of dry gas seals.</li> <li>• Energized the Compressor Substation.</li> </ul>	<ul style="list-style-type: none"> <li>• Continue AG Pipe installation and testing / air blow / restoration.</li> <li>• Continue cable pulls and conduit installation.</li> <li>• Continue instrument and tubing installation.</li> <li>• Continue with compressor lube oil flushes.</li> <li>• Continue with the installation of dry gas seals.</li> <li>• Complete installation of the compressor area roof.</li> </ul>
Liquefaction Stage 2 Area – Train 4	<ul style="list-style-type: none"> <li>• Continued AG Pipe installation and testing / air blow / restoration.</li> <li>• Continued cable pulls and conduit installation.</li> <li>• Continued instrument and tubing installation.</li> <li>• Continued erection of structural steel in the compressor and refrigeration areas.</li> <li>• Completed setting of compressor Gas Turbine stacks and Waste Heat Recovery Units.</li> </ul>	<ul style="list-style-type: none"> <li>• Continue AG Pipe installation and testing / air blow / restoration.</li> <li>• Continue cable pulls and conduit installation.</li> <li>• Continue instrument and tubing installation.</li> <li>• Continue steel erection and punch-list work-off.</li> </ul>
OSBL – Stage 1 & Stage 2	<ul style="list-style-type: none"> <li>• Continued with AG Pipe testing / air blow / restoration in Stage 2.</li> <li>• Energized the Stage 2 Utility Substation.</li> </ul>	<ul style="list-style-type: none"> <li>• Continue with AG Pipe testing / air blow / restoration in Stage 2.</li> </ul>
Support Buildings	<ul style="list-style-type: none"> <li>• Warehouse – Beneficial Occupancy secured by SPL O&amp;M.</li> <li>• Maintenance Building – Beneficial Occupancy secured by SPL O&amp;M.</li> <li>• RTFC Building – Beneficial Occupancy secured by SPL O&amp;M.</li> <li>• Laydown Bottle Storage Area – Substantial Completion accepted December 2, 2015.</li> </ul>	<ul style="list-style-type: none"> <li>• Substantial Completion acceptance for warehouse, maintenance building, and RTFC building pending Contractor submission of e-version of close out documents expected in April 2016.</li> </ul>
Access Roads, Waterline	<ul style="list-style-type: none"> <li>• Water trucks were operated for dust control, as necessary.</li> <li>• Updated schedule reflects the completion date of April 29, 2016 due to 'Force Majeure' (weather and Owner Site-Wide Safety Stand Downs).</li> </ul>	<ul style="list-style-type: none"> <li>• Continue dust control.</li> </ul>
Laydown, Staging Areas	<ul style="list-style-type: none"> <li>• No activities.</li> </ul>	<ul style="list-style-type: none"> <li>• No activities.</li> </ul>
Construction Dock (Ro-Ro)	<ul style="list-style-type: none"> <li>• Received and offload equipment at the construction dock.</li> </ul>	<ul style="list-style-type: none"> <li>• Continue to receive equipment.</li> </ul>

Sabine Pass Liquefaction, LLC, Sabine Pass LNG, L.P. and Sabine Pass Liquefaction Expansion, LLC  
 March 2016 Monthly Progress Report

Area	Construction Activities in March	Planned Work for April
Revamp Area	<ul style="list-style-type: none"> <li>• No activities.</li> </ul>	<ul style="list-style-type: none"> <li>• No activities.</li> </ul>
Condensate (CP13-2-000)	<ul style="list-style-type: none"> <li>• In Service. No further construction activities to report.</li> </ul>	<ul style="list-style-type: none"> <li>• None.</li> </ul>
Stage 3 (CP13-552-000)	<ul style="list-style-type: none"> <li>• Commenced underground pipe pre-fabrication in ISBL.</li> </ul>	<ul style="list-style-type: none"> <li>• Continue underground pipe fabrication and commence testing and installation works.</li> <li>• Commence preparation for concrete foundation installation in ISBL.</li> </ul>
East Meter Pipe (CP15-482-000)	<ul style="list-style-type: none"> <li>• Preparing for tie-in to Transco Metering Platform.</li> </ul>	<ul style="list-style-type: none"> <li>• Substantial Completion is forecasted for May 27, 2016.</li> </ul>

## 6.0 Permitting and Environmental

### Summary of Problems, Non-Compliances, and Corrective Actions

Date	Description
Intermittent	As per previous month's report, SPL continues to coordinate with LDEQ to ensure air permit compliance is demonstrated (See Attachment A).

### Agency Contacts/Inspections

Agency	Name	Date	Location/Activity
FERC	Sentho White Steven Kusy	03/22/16 – 03/23/16	Construction inspection.

## 7.0 Progress Pictures



*Train 1 –LNG commissioning cargo being loaded into the LNG Carrier.*



*Train 2 – Electrical Heat Tracing Installation in Cryo Rack Area*



*Train 2 – Hot Oil Pumps*



*Train 2 – View from North (Common R02 Rack, Compressor Area and Cryo Rack)*



*Train 3 – Compressor Area*



*Train 4 – Cable Tray Installation from Compressor Substation to Compressor Deck*



*Train 4 – Lifting the WHR Unit in Compressor Area*



*Train 4 – Turbine Exhaust Stack Installation in Compressor Area*





*Train 5 – Piling in ISBL*



*Train 5 – Underground Firewater Pipe Assembly*

# **SABINE PASS LIQUEFACTION PROJECT**

Cameron Parish, Louisiana

Monthly Progress Report  
April 2016

## Table of Contents

<b>1.0</b>	<b>Executive Summary.....</b>	<b>3</b>
<b>2.0</b>	<b>Project Highlights.....</b>	<b>3</b>
<b>3.0</b>	<b>Environmental, Safety, and Health Progress .....</b>	<b>4</b>
<b>4.0</b>	<b>Schedule.....</b>	<b>4</b>
<b>5.0</b>	<b>Construction and Start up .....</b>	<b>5</b>
<b>6.0</b>	<b>Permitting and Environmental.....</b>	<b>7</b>
<b>7.0</b>	<b>Progress Pictures .....</b>	<b>8</b>

## 1.0 Executive Summary

This report covers activities of the Sabine Pass Liquefaction Project Stages 1 - 3, that occurred during the month of April, 2016.

Stage 1 Engineering and Procurement are 100% complete. Subcontract and direct hire construction work are 92.6% and 98.2% complete, respectively. Stage 1 overall project completion is 98.6% against the plan of 99.8%.

Stage 2 Engineering and Procurement are 100% complete. Subcontract and direct hire construction work are 56.4% and 69.1% complete, respectively. Overall project completion for Stage 2 is 84.8% against the plan of 92.7%.

Stage 3 Engineering is now 67.2% complete. Procurement is now 51.4% complete. Subcontract and direct hire work are 31.5% and 0.7% complete, respectively. Stage 3 overall project completion is 33.2% against the plan of 25.7%.

Actual project progress supports the achievement of substantial completion for Trains 1 and 2 by late May 2016 and September 2016, respectively. Trains 3 and 4 targeted substantial completion dates are April 2017 and August 2017, respectively, with schedule recovery expected in the summer of 2016 as labor resource is transitioned from Stage 1 onto Stage 2.

## 2.0 Project Highlights

Stages 1 and 2 engineering and procurement are complete; engineering and procurement support of construction activities continues. For Stage 3, issuance of A/G piping OSBL and revamp isometrics and cable tray and grounding drawings continued, and final client model reviews were completed. Procurement continues to award major equipment and bulk materials; fabrication is underway for mechanical equipment, steel and pipe. The first equipment for Stage 3 (amine sump filter) was delivered to site.

During the month of April, performance on the following major subcontracts continued for Stage 1: piping insulation, fire and gas detection, fireproofing and erection/supervision of the installation of the refrigeration compressors. For Stage 2, subcontracts supervised field-erected tanks, busing, permanent telecommunications, non-destructive examination (NDE), fire and gas detection, equipment insulation, fireproofing and the supervision of the installation of refrigeration compressors. For Stage 3, subcontracts directed the soil improvement, piling and concrete batch plant subcontracts.

Train 1 successfully completed the performance test in early April. The remaining work in Train 1 is primarily punch list work off; substantial completion is projected to be achieved in May. Train 2 continued with pipe pressure testing, air blows, and restoration. Mechanical runs for the LNG compressors were completed. The current schedule progress forecasts Train 2 first cargo in mid-August and substantial completion at the end of September.

In Train 3, the installation, testing, and restoration of aboveground pipe is progressing. In the Train 3 Compressor Area, lube oil flushes, synthetic oil flushes, and the installation of dry gas seals continue. With the Train 3 compressor substation energized, loop checks commenced. Activities in Train 4 continue to focus on the installation of above ground piping. The Stage 2 Team continues to turnover systems to startup; 31 systems have been turned over to-date.

Stage 3 soil stabilization and piling continued, and the concrete batch plant mobilization completed. ISBL underground firewater pipe assembly continued, and installation commenced.

Preparation for first concrete placement commenced in April; first concrete placement is projected for May.

### 3.0 Environmental, Safety, and Health Progress

During the month of April, the following ES&H related events occurred.

APRIL 2016	Near Miss		First Aid		Recordable		Lost Time	
	Month	ITD	Month	ITD	Month	ITD	Month	ITD
Bechtel	5	686	38	2406	0	74	0	10
Subcontractor	1	52	4	160	0	7	0	1
Total	6	738	42	2566	0	81	0	11

### 4.0 Schedule

Overall progress supports the achievement of substantial completion for Trains 1 and 2 by late May 2016 and September 2016, respectively. Trains 3 and 4 targeted substantial completion dates are April 2017 and August 2017, respectively, with schedule recovery expected in the summer of 2016 as labor resource is transitioned from Stage 1 onto Stage 2.

## 5.0 Construction and Start up

Area	Construction Activities in April	Planned Work for May
Liquefaction Stage 1 Area – Train 1	<ul style="list-style-type: none"> <li>• Conducted various Commissioning Demonstration Tests (CDTs).</li> <li>• Continued fine-tuning for stable operation and successfully completed the performance test.</li> </ul>	<ul style="list-style-type: none"> <li>• Complete punch list items and turn over Care Custody and Control to Cheniere.</li> </ul>
Liquefaction Stage 1 Area – Train 2	<ul style="list-style-type: none"> <li>• Continued steel punch-list work-off.</li> <li>• Continued A/G Pipe installation, testing, air blows, and restoration.</li> <li>• Completed final lube oil flushes for the compressors.</li> <li>• Completed pipe restoration for both ethylene compressors.</li> <li>• Completed mechanical runs on both methane compressors and ethylene compressors.</li> <li>• Continued loop checking.</li> <li>• Continued electrical and instrumentation installation.</li> <li>• Continued pipe insulation.</li> <li>• Commissioned the thermal oxidizer and commenced hot oil circulation.</li> </ul>	<ul style="list-style-type: none"> <li>• Continue with steel punch-list work-off.</li> <li>• Complete AG pipe testing, air blows and restoration in all available areas.</li> <li>• Continue with loop checking.</li> <li>• Continue electrical and instrumentation installations in all available areas.</li> <li>• Continue insulation in all available areas.</li> <li>• Complete leak checks and commissioning of Amine and Gas Treatment systems.</li> <li>• Turnover ethylene and methane systems to CSU for function checks and leak checks.</li> <li>• Commission and run both ethylene compressors on nitrogen.</li> <li>• Commence perlite installation in both cold boxes.</li> <li>• Start feed gas circulation and commission Regen gas compressor</li> </ul>
Liquefaction Stage 2 Area – Train 3	<ul style="list-style-type: none"> <li>• Continued A/G pipe installation, testing, air blows, and restoration.</li> <li>• Continued cable pulls and conduit, instrument, and tubing installation.</li> <li>• Completed installation of the compressor area roof.</li> <li>• Continued steel punch-list work-off.</li> <li>• Continued compressor lube oil flushes and commenced compressor synthetic oil flushes.</li> <li>• Continued the installation of dry gas seals.</li> </ul>	<ul style="list-style-type: none"> <li>• Continue AG pipe installation, testing, air blows, and restoration.</li> <li>• Continue cable pulls and conduit installation.</li> <li>• Continue instrument and tubing installation.</li> <li>• Continue with compressor lube oil flushes.</li> <li>• Continue with compressor synthetic lube oil flushes.</li> <li>• Continue with the installation of dry gas seals.</li> <li>• Energize the Propane Substation.</li> </ul>

Sabine Pass Liquefaction, LLC, Sabine Pass LNG, L.P. and Sabine Pass Liquefaction Expansion, LLC  
April 2016 Monthly Progress Report

Area	Construction Activities in April	Planned Work for May
Liquefaction Stage 2 Area – Train 4	<ul style="list-style-type: none"> <li>• Continued A/G pipe installation, testing, air blows, and restoration.</li> <li>• Continued cable pulls and conduit, instrument, and tubing installation.</li> <li>• Continued erection of structural steel in the compressor and refrigeration areas.</li> </ul>	<ul style="list-style-type: none"> <li>• Continue AG pipe installation, testing, air blows, and restoration.</li> <li>• Continue cable pulls and conduit installation.</li> <li>• Continue instrument and tubing installation.</li> <li>• Continue steel erection and punch-list work-off in all available areas.</li> </ul>
OSBL – Stage 1 & Stage 2	<ul style="list-style-type: none"> <li>• Continued A/G pipe testing, air blows, and restoration.</li> </ul>	<ul style="list-style-type: none"> <li>• Continue with pipe testing, air blows, and restoration.</li> </ul>
Support Buildings	<ul style="list-style-type: none"> <li>• Warehouse – Substantial Completion achieved \ on April 11, 2016.</li> <li>• Maintenance Building – Substantial Completion achieved on April 11, 2016.</li> <li>• RFTC Building – Substantial Completion achieved on April 11, 2016.</li> </ul>	<ul style="list-style-type: none"> <li>• Building punch list and move in.</li> </ul>
Access Roads, Waterline	<ul style="list-style-type: none"> <li>• Work Substantially Complete.</li> </ul>	<ul style="list-style-type: none"> <li>• No activities</li> </ul>
Laydown, Staging Areas	<ul style="list-style-type: none"> <li>• No activities</li> </ul>	<ul style="list-style-type: none"> <li>• No activities</li> </ul>
Construction Dock (Ro-Ro)	<ul style="list-style-type: none"> <li>• Received and offload equipment at the construction dock.</li> </ul>	<ul style="list-style-type: none"> <li>• Continue to receive equipment.</li> </ul>
Revamp Area	<ul style="list-style-type: none"> <li>• No activities</li> </ul>	<ul style="list-style-type: none"> <li>• No activities</li> </ul>
Condensate (CP13-2-000)	<ul style="list-style-type: none"> <li>• No activities</li> </ul>	<ul style="list-style-type: none"> <li>• No activities</li> </ul>
Stage 3 (CP13-552-000)	<ul style="list-style-type: none"> <li>• Underground pipe pre-fabrication in ISBL continued and installation and testing commenced.</li> <li>• Completed excavation of the amine sump.</li> <li>• Commenced rebar pre-tying for the Compressor columns.</li> <li>• Performed final grading of ISBL.</li> </ul>	<ul style="list-style-type: none"> <li>• Continue firewater UG pipe fabrication and installation.</li> <li>• Commence Amine UG Pipe fabrication.</li> <li>• Start formwork and rebar installation for foundations inside ISBL.</li> <li>• Place first concrete.</li> <li>• Continue final grading and mudmat placement in ISBL areas.</li> <li>• Commence installation of the west side of the heavy haul road.</li> </ul>
East Meter Pipe (CP15-482-000)	<ul style="list-style-type: none"> <li>• Preparing for tie-in.</li> </ul>	<ul style="list-style-type: none"> <li>•</li> </ul>

## 6.0 Permitting and Environmental

### Summary of Problems, Non-Compliances, and Corrective Actions

Date	Description
Intermittent	As per previous month's report, SPL continues to coordinate with LDEQ to ensure air permit compliance is demonstrated.
April 18, 2016	The site has experienced significant rainfall. This has impacted site activities and resulted in the flooding of the warehouse and laydown areas.

### Agency Contacts/Inspections

Agency	Name	Date	Location/Activity
USDOT – PHMSA	Rick Daniels	April 26 – 29, 2016	Pre-startup inspection.



## 7.0 Progress Pictures



*Train 2 - Fuel Gas Area (Turned Over to Start-Up)*



*Train 2 - Installation of Aboveground Pipe Connections to Ethylene Cold Box*



*Train 3 - Installation of Oil Spill Trench in Compressor Area*



*Train 3 - Overview from North West*



*Train 4 - North Side of Methane Cold Box*



*Train 4 - Propane Refrigeration Area*



*Train 5 – Installation of West Ring of ISBL Firewater Pipe*



*Train 5 - Mudmatting Compressor Area*



*OSBL - Final Grading of Common Areas West of Stage 3 Flare Rack*



*Train 5 - Prefabricating Rebar for Compressor Deck Columns*

# **SABINE PASS LIQUEFACTION PROJECT**

Cameron Parish, Louisiana

Monthly Progress Report  
May 2016

## Table of Contents

1.0	Executive Summary .....	3
2.0	Project Highlights .....	3
3.0	Schedule .....	4
4.0	Construction .....	5
5.0	Permitting and Environmental .....	7
6.0	Progress Pictures .....	8

## 1.0 Executive Summary

This report covers activities of the SPL Stage 1, SPL Stage 2, and SPL Stage 3 projects that occurred during the month of May, 2016.

Stage 1 Engineering and Procurement are 100% complete. Subcontract and direct hire construction work are 93.9% and 98.4% complete, respectively. Stage 1 overall project completion is 98.8% against the plan of 99.8%.

Stage 2 Engineering and Procurement are 100% complete. Subcontract and direct hire construction work are 57.4% and 72.2% complete, respectively. Overall project completion for Stage 2 is 86% against the plan of 94.2%.

Stage 3 Engineering is now 72.1% complete. Procurement is now 53.5% complete. Subcontract and direct hire work are 34.3% and 1.1% complete, respectively. Stage 3 overall project completion is 35.1% against the plan of 28.6%.

Train 1 substantial completion was achieved on May 27, 2016. Actual project progress supports the achievement of substantial completion for Train 2 by late September 2016. Trains 3 and 4 targeted substantial completion dates are April 2017 and August 2017, respectively, with schedule recovery expected in the summer of 2016 as labor resource is transitioned from Stage 1 onto Stage 2.

## 2.0 Project Highlights

Stages 1 and 2 engineering and procurement are complete, with support of construction activities continuing. On Stage 3, issuance of A/G piping, OSBL and revamp isometrics and cable tray and grounding drawings continue, and final client model reviews were completed. Procurement issued the final awards for major equipment and bulk materials; fabrication is underway for mechanical equipment, steel and pipe. The final shipment for Stage 3 HDPE spools was delivered to site.

During the month of May, performance on the following major subcontracts continued for Stage 1: piping insulation, fire and gas detection, fireproofing and erection/supervision of the installation of the refrigeration compressors. For Stage 2, subcontracts administered the subcontracts for field-erected tanks, busing, permanent telecommunications, non-destructive examination (NDE), fire and gas detection, equipment and piping insulation, fireproofing and the supervision of the installation of refrigeration compressors. For Stage 3, subcontracts administered the soil improvement, piling and concrete batch plant subcontracts.

In Train 2, work continued with pipe pressure testing, air blows, and restoration. The majority of work remaining on Train 2 relates to piping insulation and completion of punchlist items. The forecast for Train 2 first cargo is expected to occur in late August, with substantial completion at the end of September.

In Train 3, the installation, testing, and restoration of A/G pipe progress has been significantly impacted by the heavy rains. In the Train 3 Compressor Area, lube oil flushes and synthetic oil flushes continued. Installation of dry gas seals for all six compressors is completed. Installation of gas generators and interconnecting piping is underway. The Train 3 Compressor and Propane Substations are energized, facilitating loop checks and bumping of motors. Activities in Train 4 continue with a focus on the installation of A/G piping.

Stage 3 soil stabilization and piling continued. First concrete was placed in the amine sump and cryo-rack foundations. ISBL underground firewater pipe installation continued, and amine U/G pipe assembly commenced.



## A. Environmental, Safety, and Health Progress

During the month of May, the following ES&H related events occurred.

May 2016	Near Miss		First Aid		Recordable		Lost Time	
	Month	ITD	Month	ITD	Month	ITD	Month	ITD
Bechtel	5	691	60	2468	2	76	0	10
Subcontractor	1	53	3	164	0	7	0	1
Total	6	744	63	2632	2	83	0	11

### 3.0 Schedule

Train 1 substantial completion was achieved on May 27, 2016. Actual project progress supports the achievement of substantial completion for Train 2 by late September 2016. Trains 3 and 4 targeted substantial completion dates are April 2017 and August 2017, respectively, with schedule recovery expected in the summer of 2016 as labor resource is transitioned from Stage 1 onto Stage 2.

## 4.0 Construction

Construction Activities by Area		
Area	Construction Activities in May	Planned Work for June
Liquefaction Stage 1 Area – Train 1	<ul style="list-style-type: none"> <li>Achieved substantial completion and turned over Care, Custody, and Control to Cheniere.</li> </ul>	<ul style="list-style-type: none"> <li>Train 1 is in Operation – no further construction activities.</li> </ul>
Liquefaction Stage 1 Area – Train 2	<ul style="list-style-type: none"> <li>Completed above ground pipe pressure testing and continued with piping air blow / restoration, including punch-list work-off.</li> <li>Continued vessel inspection, final alignment of pumps and loop checking.</li> <li>Continued electrical and instrumentation installation.</li> <li>Continued pipe insulation.</li> <li>Completed leak checks and commissioning of Unit 12 Amine, Unit 13 Gas Treatment, and Unit 15 Ethylene Refrigeration.</li> <li>Commissioned and ran both ethylene compressors on nitrogen.</li> <li>Completed perlite installation in both cold boxes.</li> <li>Commenced Amine circulation and commissioned Regen gas compressor.</li> <li>Commissioned thermal oxidizer and circulated hot oil.</li> <li>Commenced receiving refrigerants.</li> </ul>	<ul style="list-style-type: none"> <li>Continue with general punch-list work-off in all areas.</li> <li>Complete above ground air blow and restoration.</li> <li>Complete vessel inspection, final alignment of pumps and loop checking.</li> <li>Complete electrical and instrumentation installations.</li> <li>Continue pipe insulation.</li> <li>Complete leak checks and commissioning of Unit 16 Methane refrigeration and Unit 17 Heavies Removal.</li> <li>Continue receiving refrigerants in preparation for RFSU.</li> </ul>
Liquefaction Stage 2 Area – Train 3	<ul style="list-style-type: none"> <li>Continued compressor lube oil and synthetic oil flushes.</li> <li>Completed the installation of dry gas seals.</li> <li>Commenced the installation of gas generators.</li> <li>Energized the propane substation.</li> <li>Commenced the bumping of cooler motors.</li> </ul>	<ul style="list-style-type: none"> <li>Continue AG pipe installation, testing, air blows, and restoration.</li> <li>Continue cable pulls and conduit installation.</li> <li>Continue instrument and tubing installation.</li> <li>Complete compressor lube oil flushes.</li> <li>Continue with compressor synthetic lube oil flushes.</li> <li>Complete the setting of the gas generators.</li> </ul>

Sabine Pass Liquefaction, LLC, Sabine Pass LNG, L.P. and Sabine Pass Liquefaction Expansion, LLC  
May 2016 Monthly Progress Report

<b>Construction Activities by Area</b>		
<b>Area</b>	<b>Construction Activities in May</b>	<b>Planned Work for June</b>
Liquefaction Stage 2 Area – Train 4	<ul style="list-style-type: none"> <li>Continued erection of structural steel in the compressor and refrigeration areas.</li> </ul>	<ul style="list-style-type: none"> <li>Continue AG pipe installation, testing, air blows, and restoration.</li> <li>Continue cable pulls and conduit installation.</li> <li>Continue instrument and tubing installation.</li> <li>Continue steel erection and punch-list work-off in all available areas.</li> </ul>
OSBL – Stage 2	<ul style="list-style-type: none"> <li>Continued A/G pipe testing, air blows, and restoration.</li> </ul>	<ul style="list-style-type: none"> <li>Continue with pipe testing, air blows, and restoration.</li> </ul>
Support Buildings	<ul style="list-style-type: none"> <li>No activities</li> </ul>	<ul style="list-style-type: none"> <li>No activities</li> </ul>
Access Roads, Waterline	<ul style="list-style-type: none"> <li>No activities.</li> </ul>	<ul style="list-style-type: none"> <li>No activities</li> </ul>
Laydown, Staging Areas	<ul style="list-style-type: none"> <li>No activities</li> </ul>	<ul style="list-style-type: none"> <li>No activities</li> </ul>
Construction Dock (Ro-Ro)	<ul style="list-style-type: none"> <li>Received and offload equipment at the construction dock.</li> </ul>	<ul style="list-style-type: none"> <li>Continue to receive equipment.</li> </ul>
Revamp Area	<ul style="list-style-type: none"> <li>No activities</li> </ul>	<ul style="list-style-type: none"> <li>No activities</li> </ul>
Condensate (CP13-2-000)	<ul style="list-style-type: none"> <li>No activities</li> </ul>	<ul style="list-style-type: none"> <li>No activities</li> </ul>
Stage 3 – Train 5 (CP13-552-000)	<ul style="list-style-type: none"> <li>Underground firewater pipe assembly and installation continued for ISBL.</li> <li>Commenced underground amine pipe assembly for ISBL.</li> <li>Concrete placements occurred for the cryo rack and amine sump foundations.</li> <li>Continued installation of construction roads.</li> </ul>	<ul style="list-style-type: none"> <li>Continue underground firewater pipe installation and commence underground amine pipe installation in ISBL. Commence underground pipe installation in OSBL.</li> <li>Continue formwork and rebar installation for foundations inside ISBL.</li> <li>Excavate hot oil sump.</li> <li>Place concrete in compressor, cryo rack, AGRU, and hot oil sump foundations.</li> <li>Continue final grading and mudmat placement in ISBL areas.</li> <li>Continue installation of primary and heavy haul roads.</li> </ul>
East Meter Pipe (CP15-482-000)	<ul style="list-style-type: none"> <li>Preparing for tie-in.</li> </ul>	<ul style="list-style-type: none"> <li>Preparing for tie-in.</li> </ul>

## 5.0 Permitting and Environmental

### Summary of Problems, Non-Compliances, and Corrective Actions

Date	Description
Intermittent	As per previous month's report, SPL continues to coordinate with LDEQ to ensure air permit compliance is demonstrated.

### Agency Contacts/Inspections

Agency	Name	Date	Location/Activity
FERC	Senth White	May 3-4, 2016	Construction Inspection
FERC	David Rosenberg	May 3-4, 2016	Construction Inspection

## 6.0 Progress Pictures



*Train 1 - View from North; Area Security Fences Are Installed*



*Train 2 - Installation of Perlite in Cold Boxes*



*Train 2 - Insulation of Pipe on Top of Mole sieve Dehydration Vessels*



*Train 2 - Regeneration Gas Compressor & Hot Oil Area*



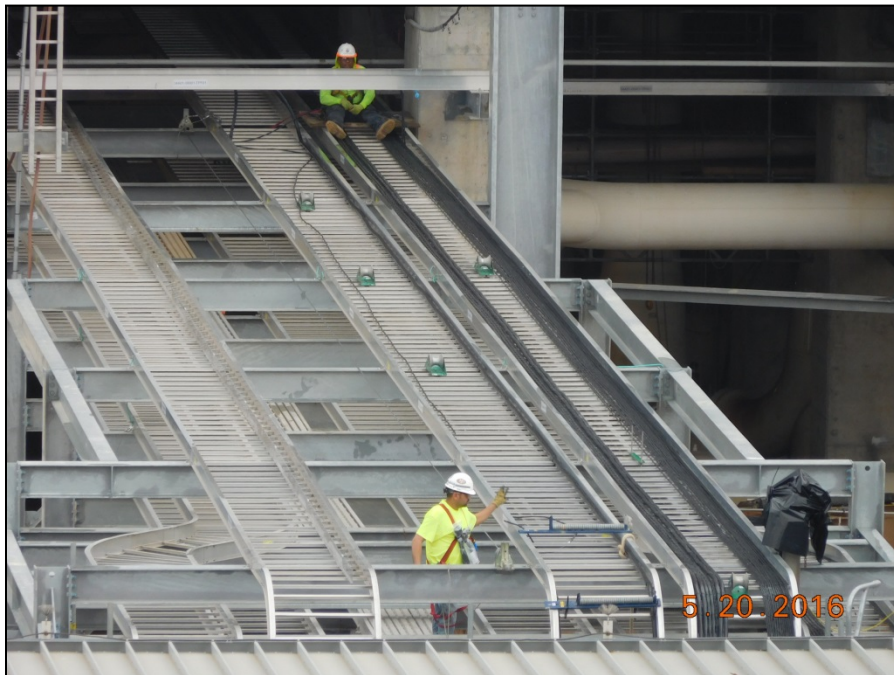
*Train 3 - Propane Condenser Area*



*Train 3 - Installation of Catalysts (Nutter Rings) in Solvent Regeneration*



*Train 3 - West of ISBL - Methane Cold Box, Heavies Removal Unit and Ethylene Cold Box Areas*



*Train 4 - Rollers for Cable Pulls in Compressor Area*





*Train 5 – Cryo Rack (Front) and Compressor Area (Back) Foundation Preparation*



*Train 5 - Concrete Pour of Section 5 of the Cryo Rack*



*Train 5 - Installation of Primary Road #4 (West of ISBL)*



*Train 5 - Underground Firewater HDPE Pipe Fusion*

# **SABINE PASS LIQUEFACTION PROJECT**

Cameron Parish, Louisiana

Monthly Progress Report  
June 2016

## Table of Contents

1.0	Executive Summary .....	3
2.0	Project Highlights .....	3
3.0	Environmental, Safety, and Health Progress .....	4
4.0	Schedule .....	4
5.0	Construction and Start up .....	5
6.0	Permitting and Environmental .....	8
8.0	Progress Pictures .....	9

## 1.0 Executive Summary

This report covers activities of the SPL Stage 1, SPL Stage 2, and SPL Stage 3 projects that occurred during the month of June, 2016.

Stage 1 Engineering and Procurement are 100% complete. Subcontract and direct hire construction work are 95.5% and 99.7% complete, respectively. Stage 1 overall project completion is 99.4% against the plan of 99.8%.

Stage 2 Engineering and Procurement are 100% complete. Subcontract and direct hire construction work are 60.2% and 75.2% complete, respectively. Overall project completion for Stage 2 is 87.4% against the plan of 95.4%.

Stage 3 Engineering is now 77% complete. Procurement is now 58% complete. Subcontract and direct hire work are 37.8% and 2% complete, respectively. Stage 3 overall project completion is 38.3% against the plan of 30.9%.

Train 1 substantial completion was achieved on May 27, 2016. Current commissioning efforts support achievement of substantial completion for Train 2 by late September 2016. Train 3 substantial completion is now estimated to be June 2017 based on actual construction progress realized. Train 4 progress will be monitored over the coming months for any potential impact to the August 2017 substantial completion target.

## 2.0 Project Highlights

Stages 1 and 2 engineering and procurement are complete, with support of construction activities continuing. Subcontracted activity continues on Stage 1 (e.g. piping insulation, fire and gas detection) and on Stage 2 (e.g. piping insulation, field-erected tanks). On Stage 3, issuance of above ground piping OSBL and revamp isometrics and cable tray and grounding drawings continue and procurement continues to monitor the fabrication of equipment and bulk materials.

During the month of June, performance on the following major subcontracts continued for Stage 1: piping insulation, fire and gas detection, fireproofing and erection/supervision of the installation of the refrigeration compressors. For Stage 2, subcontracts administered the subcontracts for field-erected tanks, busing, permanent telecommunications, non-destructive examination (NDE), fire and gas detection, equipment and piping insulation, fireproofing and the supervision of the installation of refrigeration compressors. Subcontract activity on Stage 3 continued with the soil improvement, piling and concrete batch plant subcontracts.

Train 1 achieved Substantial Completion on May 26, 2016. Train 2 completed pipe restoration and systems turnover. Pipe tightness testing was successful and the train started the dryout prior to cooldown. Propane and ethylene refrigerants were loaded into the storage vessels. The forecast for Train 2 first cargo is expected to occur in late August, with Substantial Completion at the end of September.

In Train 3, the installation, testing, and restoration of above ground pipe continues to progress. In the Train 3 compressor area, lube oil flushes and synthetic oil flushes continued. Installation of gas generators and interconnecting piping is underway. The Train 3 compressor and propane substations are energized, facilitating loop checks and bumping/running of motors. In the OSBL area, two of the three air compressors and the nitrogen generation package were put into service. Activities in Train 4 continue with a focus on the installation of above ground piping.

Stage 3 soil stabilization and piling continued. Concrete foundation works continued in compressor, cryo-rack and amine sump areas, and concrete pours of the compressor deck

columns commenced. ISBL underground firewater and amine pipe installations continued and OSBL underground firewater assembly commenced.

### 3.0 Environmental, Safety, and Health Progress

During the month of June, the following ES&H related events occurred.

	Near Miss		First Aid		Recordable		Lost Time	
	Month	ITD	Month	ITD	Month	ITD	Month	ITD
Bechtel	8	695	69	2541	4	80	0	10
Subcontractor	0	54	4	168	0	7	0	1
Total	8	749	73	2709	4	87	0	11

### 4.0 Schedule

Train 1 substantial completion was achieved on May 27, 2016. Current commissioning efforts support achievement of substantial completion for Train 2 by late September 2016. Train 3 substantial completion is now estimated to be June 2017 based on actual construction progress realized. Train 4 progress will be monitored over the coming months for any potential impact to the August 2017 substantial completion target.

## 5.0 Construction and Start up

Construction Activities by Area		
Area	Construction Activities in June	Planned Work for July
Liquefaction Stage 1 Area – Train 1	<ul style="list-style-type: none"> <li>Achieved substantial completion and turned over Care, Custody, and Control to Cheniere.</li> </ul>	<ul style="list-style-type: none"> <li>Train 1 is in Operation – no further construction activities.</li> </ul>
Liquefaction Stage 1 Area – Train 2	<ul style="list-style-type: none"> <li>Completed turnover of the last process system and continued with punch-list work-off.</li> <li>Completed loop checking.</li> <li>Continued electrical work on the lighting systems.</li> <li>Continued pipe insulation.</li> <li>Completed leak checks of Units 14, 15, 16, 17, 18.</li> <li>Continued running both ethylene compressors on nitrogen.</li> <li>Continued Amine circulation and running the Regen gas compressor.</li> <li>Continued running the thermal oxidizer and circulating hot oil.</li> <li>Continued receiving refrigerants.</li> <li>Continued interlock checks of Units 14, 15, 16, 17, and 18.</li> <li>Commenced dryout of the unit using nitrogen.</li> </ul>	<ul style="list-style-type: none"> <li>Continue with general punch-list work-off in all areas.</li> <li>Continue electrical work on the lighting systems.</li> <li>Complete pipe insulation.</li> <li>Complete receiving refrigerants in preparation for RFSU.</li> <li>Complete dryout of the unit and begin cooldown.</li> <li>Continue to perform Commissioning Demonstration Tests</li> </ul>
Liquefaction Stage 2 Area – Train 3	<ul style="list-style-type: none"> <li>Continued A/G pipe installation, testing, air blows, and restoration.</li> <li>Continued cable pulls and conduit, instrument, and tubing installation.</li> <li>Continued steel punch-list work-off.</li> <li>Continued compressor lube oil and synthetic oil flushes.</li> <li>Continued the installation of gas generators.</li> <li>Continued to bump and run motors.</li> </ul>	<ul style="list-style-type: none"> <li>Continue AG pipe installation, testing, air blows, and restoration.</li> <li>Continue cable pulls and conduit installation.</li> <li>Continue instrument and tubing installation.</li> <li>Continue with compressor synthetic lube oil flushes.</li> <li>Complete the setting of the gas generators.</li> <li>Commence interlock testing of units 22 and 11.</li> </ul>

Sabine Pass Liquefaction, LLC, Sabine Pass LNG, L.P. and Sabine Pass Liquefaction Expansion, LLC  
June 2016 Monthly Progress Report

<b>Construction Activities by Area</b>		
<b>Area</b>	<b>Construction Activities in June</b>	<b>Planned Work for July</b>
Liquefaction Stage 2 Area – Train 4	<ul style="list-style-type: none"> <li>• Continued A/G pipe installation, testing, air blows, and restoration.</li> <li>• Continued cable pulls and conduit, instrument, and tubing installation.</li> <li>• Continued erection of structural steel in the compressor and refrigeration areas.</li> </ul>	<ul style="list-style-type: none"> <li>• Continue AG pipe installation, testing, air blows, and restoration.</li> <li>• Continue cable pulls and conduit installation.</li> <li>• Continue instrument and tubing installation.</li> <li>• Continue steel erection and punch-list work-off in all available areas.</li> <li>• Continue with compressor lube oil flushes.</li> </ul>
OSBL – Stage 2	<ul style="list-style-type: none"> <li>• Continued A/G pipe testing, air blows and restoration.</li> <li>• Air compressors and nitrogen package put into service</li> <li>• Fire water distribution and hydrants put into service</li> </ul>	<ul style="list-style-type: none"> <li>• Continue with pipe testing, air blows, and restoration.</li> </ul>
Support Buildings	<ul style="list-style-type: none"> <li>• No activities</li> </ul>	<ul style="list-style-type: none"> <li>• No activities</li> </ul>
Access Roads, Waterline	<ul style="list-style-type: none"> <li>• No activities.</li> </ul>	<ul style="list-style-type: none"> <li>• No activities</li> </ul>
Laydown, Staging Areas	<ul style="list-style-type: none"> <li>• No activities</li> </ul>	<ul style="list-style-type: none"> <li>• No activities</li> </ul>
Construction Dock (Ro-Ro)	<ul style="list-style-type: none"> <li>• Received and offload equipment at the construction dock.</li> </ul>	<ul style="list-style-type: none"> <li>• Continue to receive equipment.</li> </ul>
Revamp Area	<ul style="list-style-type: none"> <li>• No activities</li> </ul>	<ul style="list-style-type: none"> <li>• No activities</li> </ul>
Condensate (CP13-2-000)	<ul style="list-style-type: none"> <li>• No activities</li> </ul>	<ul style="list-style-type: none"> <li>• No activities</li> </ul>



Sabine Pass Liquefaction, LLC, Sabine Pass LNG, L.P. and Sabine Pass Liquefaction Expansion, LLC  
June 2016 Monthly Progress Report

<b>Construction Activities by Area</b>		
<b>Area</b>	<b>Construction Activities in June</b>	<b>Planned Work for July</b>
Stage 3 – Train 5 & Stage 3 OSBL (CP13-552-000)	<ul style="list-style-type: none"> <li>• Underground firewater and amine pipe assembly and installation continued for ISBL. Firewater fabrication commenced in OSBL</li> <li>• Concrete placements occurred for the compressor area, cryo rack and amine sump foundations. Commenced concrete pours of compressor deck columns.</li> <li>• Continued installation of roads, trenches and culverts. Continued OSBL final grading.</li> </ul>	<ul style="list-style-type: none"> <li>• Continue underground firewater and amine pipe installation in ISBL.</li> <li>• Continue underground firewater pipe assembly and commence testing and installation in OSBL.</li> <li>• Continue formwork and rebar installation for foundations inside ISBL.</li> <li>• Place concrete in compressor, cryo rack, propane condenser rack, mercury removal rack, and hot oil sump foundations.</li> <li>• Commence cathodic protection installation for amine underground pipe.</li> <li>• Commence steel installation in cryo rack area.</li> <li>• Continue final grading and mudmat placement in ISBL areas.</li> <li>• Continue installation of primary and heavy haul roads, trenches and culverts.</li> </ul>
East Meter Pipe (CP15-482-000)	<ul style="list-style-type: none"> <li>• Preparing for tie-in.</li> </ul>	<ul style="list-style-type: none"> <li>• Preparing for tie-in.</li> </ul>

## 6.0 Permitting and Environmental

### Summary of Problems, Non-Compliances, and Corrective Actions

Date	Description
Intermittent	As per previous month's report, SPL continues to coordinate with LDEQ to ensure air permit compliance is demonstrated.

### Agency Contacts/Inspections

Agency	Name	Date	Location/Activity
FERC	Steven Kusy	June 22, 2016	Construction Inspection
FERC	David Rosenberg	June 22, 2016	Construction Inspection

## 8.0 Progress Pictures



*Train 2 - Pipe Insulation Installation in Propane Refrigeration Area*



*Train 2 - Area Paving of the Road Inside ISBL*



*Train 3 - Stabilizer Condenser Air Cooled Exchanger in Utility Pipe Rack*



*Train 3 - Hydraulic Bolt Tensioning*



*Train 3 - Thermal Oxidizer Area*



*Train 4 - Compressor Area Roofing Installation*



*Train 4 - Propane Substation Gears*



*Stage 2 OSBL - Air Compressors Commissioned*



*Stage 3 OSBL - Excavation for Trench Installation (OSBL1 Trench A North End)*



*Stage 3 OSBL - Piling of Propane Refrigerant Storage Area Pipe Rack (347R05)*



*Train 5 - Amine Underground Pipe Installation in Amine Storage Area (ISBL)*



*Train 5 - Compressor Area, Propane Columns First Concrete Pour*



# **SABINE PASS LIQUEFACTION PROJECT**

Cameron Parish, Louisiana

Monthly Progress Report  
July 2016

## Table of Contents

1.0	Executive Summary .....	3
2.0	Project Highlights .....	3
3.0	Environmental, Safety, and Health Progress .....	4
4.0	Schedule .....	4
5.0	Construction and Start up .....	5
6.0	Permitting and Environmental .....	8
8.0	Progress Pictures .....	9

## 1.0 Executive Summary

This report covers activities of the SPL Stage 1, SPL Stage 2, and SPL Stage 3 projects that occurred during the month of July, 2016.

Stage 1 Engineering and Procurement are 100% complete. Subcontract and direct hire construction work are 97% and 99.9% complete, respectively. Stage 1 overall project completion is 99.7% against the plan of 100%.

Stage 2 Engineering and Procurement are 100% complete. Subcontract and direct hire construction work are 61.9% and 77.8% complete, respectively. Overall project completion for Stage 2 is 88.4% against the plan of 96.6%.

Stage 3 Engineering is now 81.5% complete. Procurement is now 59.3% complete. Subcontract and direct hire work are 40.7% and 3% complete, respectively. Stage 3 overall project completion is 40% against the plan of 33.1%.

Train 1 substantial completion was achieved on May 27, 2016. Current commissioning efforts support achievement of substantial completion for Train 2 by late September 2016. Train 3 substantial completion is now estimated to be June 2017 based on actual construction progress realized. Train 4 progress will be monitored over the coming months for any potential impact to the August 2017 substantial completion target.

## 2.0 Project Highlights

Stages 1 and 2 engineering and procurement are complete, with support of construction activities continuing. Subcontracted activity continues on Stage 1 (e.g. piping insulation, fire and gas detection) and on Stage 2 (e.g. piping insulation, field-erected tanks). On Stage 3, Engineering completed piping isometrics, grounding drawings, concrete IFC designs and instrumentation location plans, and procurement continues to monitor the fabrication of equipment and bulk materials. Subcontract activity on Stage 3 continued with the soil improvement, piling and concrete batch plant subcontracts.

Train 2 completed pipe insulation; refrigerants were transferred to the unit and cool down commenced. Submission of the Certificate for RFSU and Production of first LNG for Train 2 occurred on July 27<sup>th</sup>. Train 2 first cargo is expected to occur in late August, with Substantial Completion at the end of September.

In Train 3, the installation, testing, and restoration of above ground pipe continues to progress. In the Train 3 compressor area, initial lube oil and synthetic oil flushes are now complete. Installation of gas generators and interconnecting piping is also complete. Train 3 loop checks and motor runs continued throughout the month. Activities in Train 4 continue with a focus on the installation of aboveground piping. Also, the Train 4 compressor substation was energized this month.

Stage 3 soil stabilization and piling continued in the OSBL area. Concrete foundation works continued in compressor, cryo-rack and amine sump areas and commenced in the propane refrigeration, propane condenser rack, and hot oil sump areas. Steel erection commenced in cryo rack area. ISBL underground firewater and amine pipe installations continued. In OSBL, underground firewater assembly continued and installation commenced. The installation of heavy haul and primary roads and final grading continued.

### 3.0 Environmental, Safety, and Health Progress

During the month of July, the following ES&H related events occurred.

	Near Miss		First Aid		Recordable		Lost Time	
	Month	ITD	Month	ITD	Month	ITD	Month	ITD
Bechtel	5	704	57	2606	1	81	0	10
Subcontractor	0	54	0	168	0	7	0	1
Total	5	760	57	2774	1	88	0	11

### 4.0 Schedule

Train 1 substantial completion was achieved on May 27, 2016. Current commissioning efforts support achievement of substantial completion for Train 2 by late September 2016. Train 3 substantial completion is now estimated to be June 2017 based on actual construction progress realized. Train 4 progress will be monitored over the coming months for any potential impact to the August 2017 substantial completion target.

## 5.0 Construction and Start up

Construction Activities by Area		
Area	Construction Activities in July	Planned Work for August
Liquefaction Stage 1 Area – Train 2	<ul style="list-style-type: none"> <li>• Continued electrical work on the lighting systems.</li> <li>• Completed pipe insulation.</li> <li>• Continued general punch-list work-off items.</li> <li>• Completed running both ethylene compressors on nitrogen.</li> <li>• Completed amine circulation and running the regen gas compressor.</li> <li>• Completed transferring refrigerants into the unit.</li> <li>• Completed interlock checks of Units 14, 15, 16, 17, and 18.</li> <li>• Completed dryout of the unit using nitrogen.</li> <li>• Restarted compressors and commenced cooldown.</li> <li>• Continued with Commissioning Demonstration Tests.</li> </ul>	<ul style="list-style-type: none"> <li>• Continue general punch-list work-off items.</li> <li>• Continue electrical work on the lighting systems.</li> <li>• Continue liquefaction production for first cargo.</li> <li>• Complete loading of first cargo.</li> <li>• Shutdown compressors for strainer outage in preparation for performance test.</li> <li>• Continue to perform commissioning demonstration tests.</li> </ul>
Liquefaction Stage 2 Area – Train 3	<ul style="list-style-type: none"> <li>• Continued A/G pipe installation, testing, air blows, and restoration.</li> <li>• Continued cable pulls and conduit, instrument, and tubing installation.</li> <li>• Continued steel punch-list work-off.</li> <li>• Continued compressor lube oil and synthetic oil flushes.</li> <li>• Continued the installation of gas generators.</li> <li>• Continued to bump and run motors.</li> <li>• Completed cold cranks for both ethylene compressors.</li> <li>• Commenced interlock testing of Units 22, 11, and 19.</li> <li>•</li> </ul>	<ul style="list-style-type: none"> <li>• Continue AG pipe installation, testing, air blows, and restoration.</li> <li>• Continue cable pulls and conduit, instrument, and tubing installation.</li> <li>• Continue with compressor synthetic lube oil flushes.</li> <li>• Complete cold cranks for both methane compressors.</li> <li>• Complete interlock testing to support the introduction of fuel gas.</li> <li>• Commence ethylene compressors mechanical runs.</li> </ul>

Sabine Pass Liquefaction, LLC, Sabine Pass LNG, L.P. and Sabine Pass Liquefaction Expansion, LLC  
July 2016 Monthly Progress Report

<b>Construction Activities by Area</b>		
<b>Area</b>	<b>Construction Activities in July</b>	<b>Planned Work for August</b>
Liquefaction Stage 2 Area – Train 4	<ul style="list-style-type: none"> <li>• Continued A/G pipe installation, testing, air blows, and restoration.</li> <li>• Continued cable pulls and conduit, instrument, and tubing installation.</li> <li>• Continued erection of structural steel in the compressor and refrigeration areas.</li> </ul>	<ul style="list-style-type: none"> <li>• Continue AG pipe installation, testing, air blows, and restoration.</li> <li>• Continue cable pulls and conduit, instrument, and tubing installation.</li> <li>• Continue steel erection and punch-list work-off in all available areas.</li> <li>• Continue with compressor lube oil flushes.</li> </ul>
OSBL – Stage 2	<ul style="list-style-type: none"> <li>• Continued A/G pipe testing, air blows and restoration.</li> </ul>	<ul style="list-style-type: none"> <li>• Continue A/G pipe testing, air blows and restoration.</li> </ul>
Support Buildings	<ul style="list-style-type: none"> <li>• No activities</li> </ul>	<ul style="list-style-type: none"> <li>• No activities</li> </ul>
Access Roads, Waterline	<ul style="list-style-type: none"> <li>• No activities</li> </ul>	<ul style="list-style-type: none"> <li>• No activities</li> </ul>
Laydown, Staging Areas	<ul style="list-style-type: none"> <li>• No activities</li> </ul>	<ul style="list-style-type: none"> <li>• No activities</li> </ul>
Construction Dock (Ro-Ro)	<ul style="list-style-type: none"> <li>• Received and offload equipment at the construction dock.</li> </ul>	<ul style="list-style-type: none"> <li>• Continue to receive equipment.</li> </ul>
Revamp Area	<ul style="list-style-type: none"> <li>• No activities</li> </ul>	<ul style="list-style-type: none"> <li>• No activities</li> </ul>
Condensate (CP13-2-000)	<ul style="list-style-type: none"> <li>• No activities</li> </ul>	<ul style="list-style-type: none"> <li>• No activities</li> </ul>

Sabine Pass Liquefaction, LLC, Sabine Pass LNG, L.P. and Sabine Pass Liquefaction Expansion, LLC  
July 2016 Monthly Progress Report

<b>Construction Activities by Area</b>		
<b>Area</b>	<b>Construction Activities in July</b>	<b>Planned Work for August</b>
Stage 3 – Train 5 & Stage 3 ISBL and OSBL (CP13-552-000)	<ul style="list-style-type: none"> <li>• Continued underground firewater and amine pipe assembly and installation.</li> <li>• Continued foundation installation in compressor area, cryo rack and amine sump areas.</li> <li>• Commenced concrete pours of compressor deck columns and foundation works in propane refrigeration, propane condenser rack, and hot oil sump areas.</li> <li>• Commenced steel erection in cryo rack area.</li> <li>• Commenced installation of cathodic protection for amine underground pipe.</li> <li>• Continued installation of roads, trenches, culverts, and final grading.</li> <li>• Continued firewater assembly and commenced installation.</li> </ul>	<ul style="list-style-type: none"> <li>• Continue underground firewater and amine pipe installation.</li> <li>• Continue concrete foundation installations.</li> <li>• Commence concrete works for substations foundations, mercury removal area, utilities rack, and thermal oxidizer foundation.</li> <li>• Continue steel erection in cryo rack area.</li> <li>• Commence steel erection in propane condenser rack area.</li> <li>• Continue cathodic protection installation for amine underground pipe.</li> <li>• Continue final grading and mudmat placement.</li> <li>• Continue installation of primary, secondary, and heavy haul roads, trenches and culverts.</li> <li>• Continue underground firewater assembly and installation.</li> <li>• Commence foundation works in sump, and in R01 and R07 pipe racks.</li> </ul>
East Meter Pipe (CP15-482-000)	<ul style="list-style-type: none"> <li>• Preparing for tie-in.</li> </ul>	<ul style="list-style-type: none"> <li>• Preparing for tie-in.</li> </ul>

## 6.0 Permitting and Environmental

### Summary of Problems, Non-Compliances, and Corrective Actions

Date	Description
Intermittent	As per previous month's report, SPL continues to coordinate with LDEQ to ensure air permit compliance is demonstrated.

### Agency Contacts/Inspections

Agency	Name	Date	Location/Activity
None			



## 8.0 Progress Pictures



*Train 2 – Alleyway between Compressor Area and Cryo Rack*



*Train 2 – Cold Insulation Installation on Pipe Flanges on Compressor Deck*



*Train 3 – Compressor Area*



*Train 3 – Propane Refrigeration Area, the All-Structure Multi-Discipline Scaffolding is Erected*



*Train 4 – Propane Refrigeration Area*



*Train 4 – Subcooler Stacks Erection in Progress*



*Train 5 – First Concrete Pour of Propane Condenser Pipe Rack Foundation*



*Train 5 – Commenced Installation of Shoring on Northeast Side of Propane Compressor Foundation*



*Train 5 – Commenced ISBL Steel Erection, Cryo Pipe Rack Area*



*Train 5 – Hot Oil Sump Wall Installation*



*Stage 3 OSBL – Piling, Pipe Rack R06 Area*



*Stage 3 OSBL – Culverts, Heavy Haul Road (Northeast of ISBL)*

# **SABINE PASS LIQUEFACTION PROJECT**

Cameron Parish, Louisiana

Monthly Progress Report  
August 2016

## Table of Contents

1.0	Executive Summary .....	3
2.0	Project Highlights .....	3
3.0	Environmental, Safety, and Health Progress .....	4
4.0	Schedule .....	4
5.0	Construction and Start up .....	5
6.0	Permitting and Environmental .....	7
8.0	Progress Pictures .....	8



## 1.0 Executive Summary

This report covers activities of the SPL Stage 1, SPL Stage 2, and SPL Stage 3 projects that occurred during the month of August 2016.

Stage 1 Engineering and Procurement are 100% complete. Subcontract and direct hire construction work are 98.3% and 100% complete, respectively. Stage 1 overall project completion is 99.8% against the plan of 100%.

Stage 2 Engineering and Procurement are 100% complete. Subcontract and direct hire construction work are 64.6% and 82.4% complete, respectively. Overall project completion for Stage 2 is 90.3% against the plan of 97.8%.

Stage 3 Engineering is now 85.9% complete. Procurement is now 60.9% complete. Subcontract and direct hire work are 41.3% and 3.9% complete, respectively. Stage 3 overall project completion is 41.5% against the plan of 35.9%.

Current commissioning efforts support achievement of substantial completion for Train 2 in September 2016. Train 3 substantial completion is estimated to be June 2017 based on actual construction progress realized. Train 4 progress will be monitored over the coming months for any potential impact to the August 2017 substantial completion target.

## 2.0 Project Highlights

Stages 1 and 2 engineering and procurement are complete, with support of construction activities continuing. Subcontracted activity continues on Stage 1 (e.g. road surfacing) and on Stage 2 (e.g. piping insulation, field-erected tanks). On Stage 3, Engineering completed tie-in packages, structural steel and architectural IFC designs, and procurement continues to monitor the fabrication of equipment and bulk materials. Subcontract activity on Stage 3 continued with the soil improvement, piling and concrete batch plant subcontracts.

In Train 3, the installation, testing, and restoration of above ground pipe continues to progress. In the Train 3 compressor area, all ethylene and methane turbines have been cold cranked. The team is actively working towards cold crank of the propane machines as well as mechanical runs for all machines. The Thermal Oxidizer was turned over to CSU for function checks in preparation for refractory dry out in September. Train 3 loop checks and motor runs continued throughout the month. Activities in Train 4 continue with a focus on the installation of aboveground piping as well as ramp up of pipe testing. The Train 4 propane substation 480V was energized this month.

Stage 3 soil stabilization and piling continued in the OSBL area. ISBL and OSBL underground firewater and amine pipe installations continued as well as installation of ISBL foundations. OSBL foundation installation commenced for the water treatment building sump and OSBL pipe racks. Steel erection continued in cryo rack area and commenced in propane condenser area. Aboveground pipe pre-fabrication commenced for the cryo rack area. OSBL and ISBL site work continued with roads installation, final grading, and trenches and culverts installation.

### 3.0 Environmental, Safety, and Health Progress

During the month of August, the following ES&H related events occurred.

	Near Miss		First Aid		Recordable		Lost Time	
	Month	ITD	Month	ITD	Month	ITD	Month	ITD
Bechtel	4	719	64	3044	1	82	1	11
Subcontractors	0	54	2	171	0	7	0	1
Total	4	773	66	3215	1	89	1	12

### 4.0 Schedule

Substantial completion for Train 2 is forecasted to be achieved September 2016. Train 3 substantial completion is estimated to be June 2017 based on actual construction progress realized and flare modification impacts. Train 4 progress will be monitored over the coming months for any potential impact to the August 2017 substantial completion target.

## 5.0 Construction and Start up

Construction Activities by Area		
Area	Construction Activities in August	Planned Work for September
Liquefaction Stage 1 Area – Train 2	<ul style="list-style-type: none"> <li>Continued general punch-list work-off items.</li> <li>Continued electrical work on the lighting systems.</li> <li>Completed loading of first cargo.</li> <li>Shutdown compressors for strainer outage in preparation for performance test.</li> <li>Continued with commissioning demonstration tests (CDTs).</li> </ul>	<ul style="list-style-type: none"> <li>Complete electrical work on the lighting systems.</li> <li>Complete with the shutdown work to clean strainers, as well as other outage activities in preparation for performance testing.</li> <li>Restart liquefaction operation and continued with fine-tuning for stable operation.</li> <li>Conduct performance test and complete CDTs.</li> </ul>
Liquefaction Stage 2 Area – Train 3	<ul style="list-style-type: none"> <li>Continued A/G pipe installation, testing, air blows, and restoration.</li> <li>Continued cable pulls and conduit, instrument, and tubing installation.</li> <li>Continued compressor lube oil and synthetic oil flushes.</li> <li>Continued to bump and run motors.</li> <li>Completed cold cranks for both propane and methane machines.</li> <li>Completed interlocks and introduced fuel gas.</li> </ul>	<ul style="list-style-type: none"> <li>Continue A/G pipe installation, testing, air blows, and restoration.</li> <li>Continue cable pulls and conduit, instrument, and tubing installation.</li> <li>Continue piping insulation.</li> <li>Complete mechanical runs for the two ethylene compressors and two methane compressors.</li> <li>Commission thermal oxidizer and commence refractory dry out.</li> <li>Continue compressor lube oil flushes.</li> </ul>
Liquefaction Stage 2 Area – Train 4	<ul style="list-style-type: none"> <li>Continued A/G pipe installation, testing, air blows, and restoration.</li> <li>Continued cable pulls and conduit, instrument, and tubing installation.</li> <li>Commenced loop checks.</li> <li>Continued erection of structural steel in the compressor and refrigeration areas.</li> </ul>	<ul style="list-style-type: none"> <li>Continue A/G pipe installation, testing, air blows, and restoration.</li> <li>Continue cable pulls and conduit, instrument, and tubing installation.</li> <li>Continue steel erection and punch-list work-off items.</li> </ul>
OSBL – Stage 2	<ul style="list-style-type: none"> <li>Continued A/G pipe testing, air blows and restoration.</li> </ul>	<ul style="list-style-type: none"> <li>Continue A/G pipe testing, air blows and restoration.</li> </ul>
Support Buildings	<ul style="list-style-type: none"> <li>No activities</li> </ul>	<ul style="list-style-type: none"> <li>No activities</li> </ul>
Access Roads, Waterline	<ul style="list-style-type: none"> <li>No activities</li> </ul>	<ul style="list-style-type: none"> <li>No activities</li> </ul>
Laydown Areas	<ul style="list-style-type: none"> <li>No activities</li> </ul>	<ul style="list-style-type: none"> <li>No activities</li> </ul>
Construction Dock (Ro-Ro)	<ul style="list-style-type: none"> <li>Received and offload equipment at the construction dock.</li> </ul>	<ul style="list-style-type: none"> <li>Continue to receive equipment.</li> </ul>

<b>Construction Activities by Area</b>		
<b>Area</b>	<b>Construction Activities in August</b>	<b>Planned Work for September</b>
Revamp Area	<ul style="list-style-type: none"> <li>• No activities</li> </ul>	<ul style="list-style-type: none"> <li>• No activities</li> </ul>
Condensate (CP13-2-000)	<ul style="list-style-type: none"> <li>• No activities</li> </ul>	<ul style="list-style-type: none"> <li>• No activities</li> </ul>
Stage 3 – Train 5 & Stage 3 ISBL and OSBL (CP13-552-000)	<ul style="list-style-type: none"> <li>• Continued underground firewater and amine pipe assembly and installation.</li> <li>• Completed foundation installation in cryo rack and propane refrigeration foundation.</li> <li>• Installing foundations in compressor area, hot oil, propane condenser rack, propane refrigeration, compressor substation, mercury removal, and water treatment areas.</li> <li>• Continued area paving installation between cryo rack and compressor areas.</li> <li>• Continued steel erection in cryo rack area and commenced erection in propane condenser rack.</li> <li>• Staged and prefabricating A/G piping for the cryo rack area installation.</li> <li>• Continued installation of grounding in all areas and cathodic protection for amine underground pipe.</li> <li>• Continued underground firewater assembly and installation.</li> <li>• Continued installation of roads, trenches, culverts and final grading.</li> </ul>	<ul style="list-style-type: none"> <li>• Continue underground firewater and amine pipe installation.</li> <li>• Continue concrete foundation installations.</li> <li>• Continue steel erection.</li> <li>• Begin installation of A/G pipe in cryo rack area.</li> <li>• Continue installation of grounding in all areas and complete cathodic protection installation for amine underground pipe.</li> <li>• Continue final grading and mudmat placement.</li> <li>• Continue installation of primary, secondary and heavy haul roads, trenches and culverts.</li> </ul>
East Meter Pipe (CP15-482-000)	<ul style="list-style-type: none"> <li>• Preparing for tie-in.</li> </ul>	<ul style="list-style-type: none"> <li>• Preparing for tie-in.</li> </ul>

## 6.0 Permitting and Environmental

### Summary of Problems, Non-Compliances, and Corrective Actions

Date	Description
Intermittent	As per previous month's report, SPL continues to coordinate with LDEQ to ensure air permit compliance is demonstrated.

### Agency Contacts/Inspections

Agency	Name	Date	Location/Activity
FERC	Steven Kusy	08/16/16 – 08/17/16	FERC Inspection

## 8.0 Progress Pictures



*Train 3 – Insulating Pipe above the Compressor Deck*



*Train 3 – Installation of Internals in Mole Sieve Dehydration Vessels*



*Train 4 – Heavies Removal Area*



*Stage 2 – East Metering Pipe Rack Installed*



*Train 5 – Installation of Shoring & Decking for Propane Deck*



*Train 5 – Commenced Installation of Steel in Propane Condenser Pipe Rack*





*Train 5 – Area Paving between Compressor and Cryo Rack Areas*



*Stage 3 OSBL – Underground Firewater Pipe Installation*



*Stage 3 OSBL – Pipe Rack R07 Foundations, Ready to Pour*



*Stage 3 OSBL – Drainage Ditch Installation*



*Stage 3 OSBL – Heavy Haul Road Bridge Installation*



*Stage 3 OSBL – Culvert Installation*