



Supplemental Environmental Projects Update

**Presentation to the Northern New Mexico
Citizens Advisory Board**

June 15, 2016

**Pete Maggiore,
Acting Chief of Staff, NNSA Los Alamos Field
Office**

History Timeline



2/14/2014	Radiological release at WIPP
2/14/2014- 12/6/2015	Investigations, information requests, and self-disclosures
12/6/2014	NMED issues Order to DOE/LANS
1/9/2015	DOE and LANS file answers to Order
4/30/2015	All parties sign General Principles of Agreement
1/22/2016	Settlement agreement signed



Progress Since Settlement Was Reached

- **DOE/NNSA and LANL**
 - will complete \$34.5M in environmental projects to protect human health and the environment
 - have been implementing a Corrective Action Plan to prevent issues associated with the nitrate salt event from re-occurring
 - continue to work with NMED on permitting and strive for a relationship that allows for transparency on issues and challenges
 - meet regularly with NMED's technical staff and leadership team



Supplemental Environmental Projects



1. **Road Project**
2. **Triennial Review Project**
3. **Watershed Enhancement Project**
4. **Surface Water Sampling Project**
5. **Potable Water Line Replacement Project**

Road Project



- **\$12 million**
- **"...to improve DOT-owned transportation routes at LANL used for the transportation of transuranic waste to WIPP."**
 - Paragraph 37



Road Improvement Project



Los Alamos
NATIONAL LABORATORY



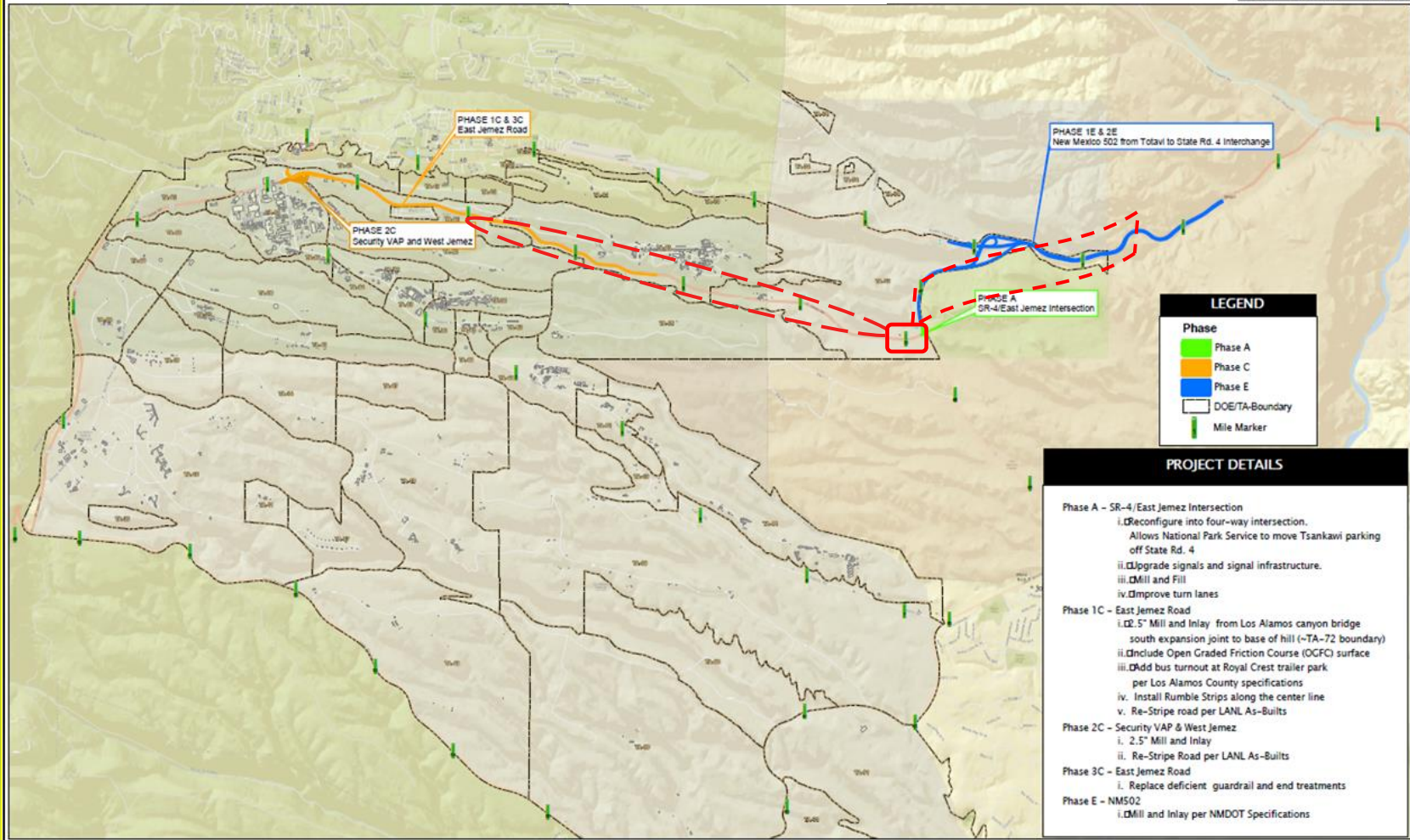
0 1,250 2,500 4,000 7,500 10,000
Feet

SETTLEMENT AGREEMENT SUPPLEMENTAL PROJECT IMPROVE DOE-OWNED TRANSPORTATION ROUTES



Rev. 9/07
U16026 Rev'd

Scale: 1" = 1,000' Date: 11/11/11



Triennial Review Project



- **\$2.5 million**
- **“...independent, external triennial reviews of environmental regulatory compliance and operations...”**
 - Paragraph 38
- **Results made available to LANL, NMED and the public**
- **Initial triennial review completed and made public before end of FY2018**





Watershed Enhancement Project

- **\$7.5 million**
- **“...design and install engineering structures in and around LANL to slow storm water flow and decrease sediment load to improve water quality in the area..”**
 - Paragraph 39





Surface Water Sampling Project

- **\$2.5 million**
- **"...increased sampling and monitoring capabilities for storm water runoff in and around LANL with the results of sampling and monitoring shared with the public and NMED."**

– Paragraph 40





Potable Water Line Replacement Project

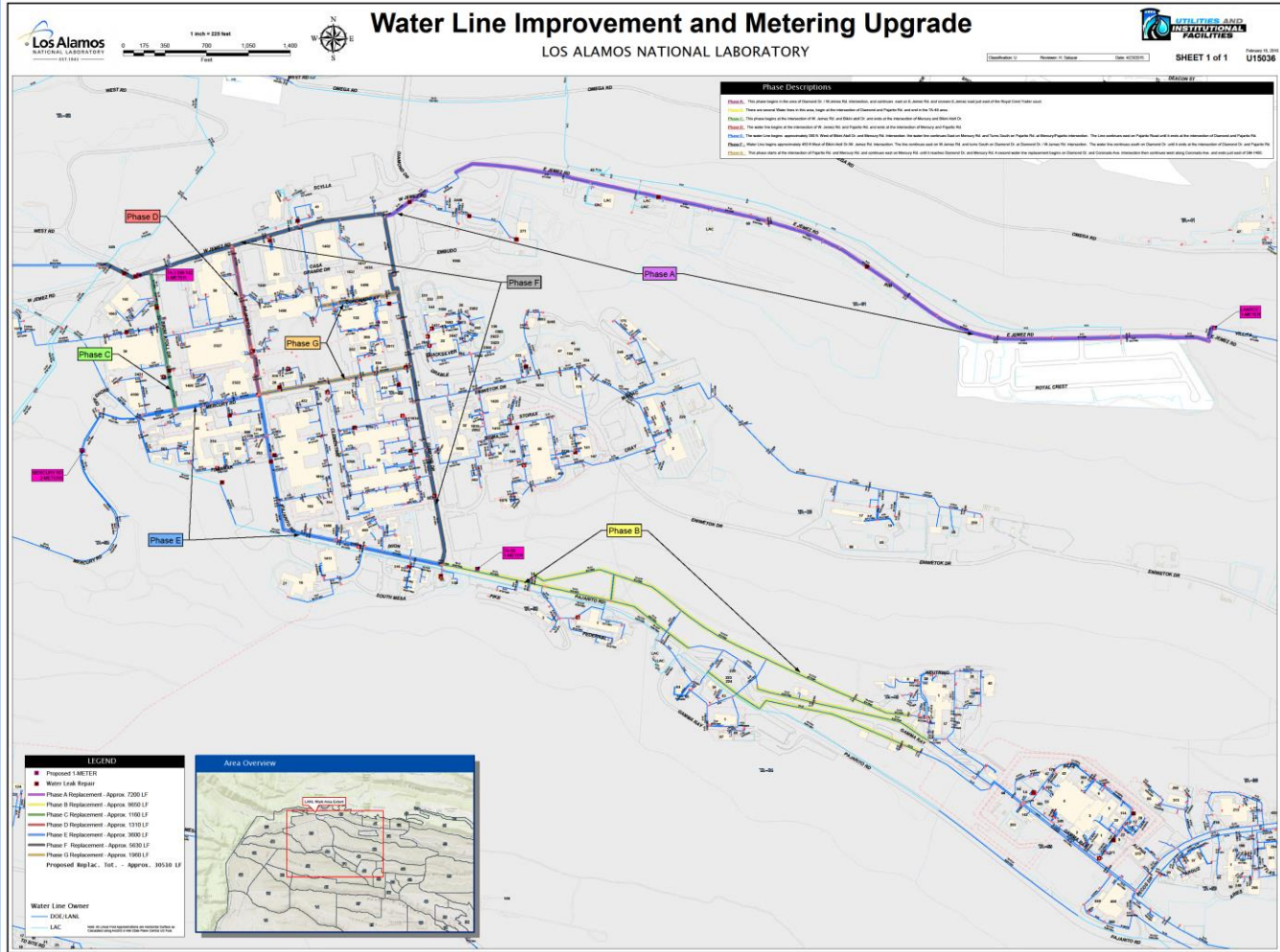
- **\$10 million**
- **"...replace aging potable water lines and install metering equipment for LANL potable water systems. These improvements will reduce potable water losses, minimize reportable spills, and enhance water conservation efforts at LANL."**

- Paragraph 41





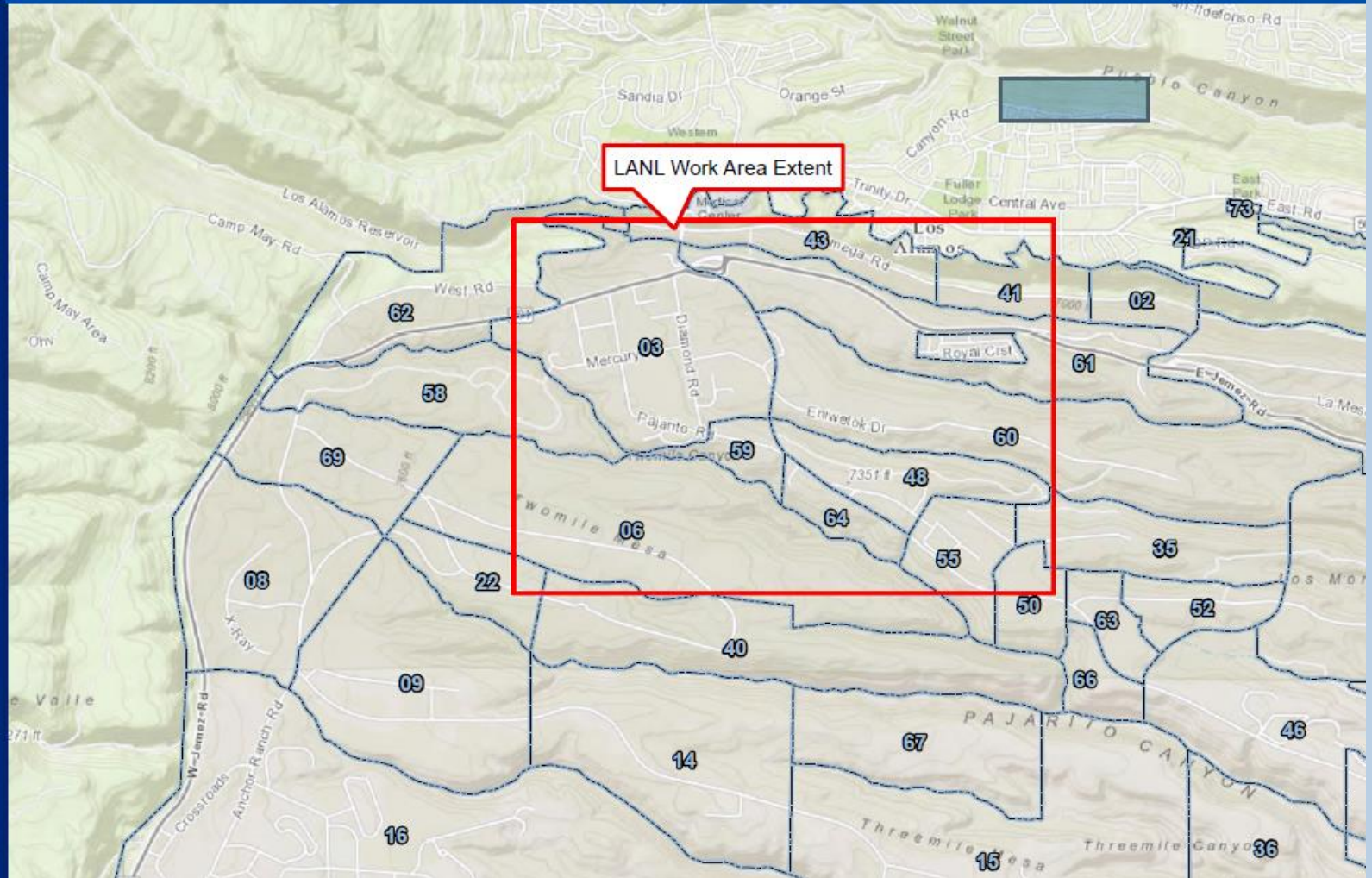
Potable Water Line Replacement Project





Potable Water Line Replacement Project

Area Overview



Path Forward



- **Finalize Scope of Work**
- **Finalize Acquisition Strategy for each SEP**
- **Create addendums to Settlement Agreement.**
 - Will include scope, acquisition strategy, and schedule for work completion
 - Will be “fully enforceable” (per paragraph 45 of the Settlement Agreement)

Communications Strategy



- **NMED Communications Office will be the focal point for high-level communications on SEPs. Anticipate monthly updates with input from various stakeholders in Northern NM**
- **NNSA welcomes an opportunity to return to update the NNM CAB at the pleasure of the Board.**



➤ **Questions?**