



SOBOBA BAND OF LUISEÑO INDIANS

Developer

OPTIMUM GROUP



Optimum Group LLC
215 North Marengo Ave., Suite 362
Pasadena, CA 91101

February 11th, 2016

Soboba History



EST. JUNE 19, 1883

The Soboba Band of Luiseño Indians is one of the federally recognized bands of Luiseño Indians in Southern California.

Established by Executive Order on June 19th, 1883. The Soboba Indian Reservation is nestled in the foothills of the San Jacinto Mountains



Payómkawichum
"People of the West"

Soboba History

Soboba Cultural Center & Research Library



- ▶ Tribe consisting of 1200 members
- ▶ Tribal members of Cahuilla and Luiseno Ancestry
- ▶ 7000 acres of land

Soboba History

Cultural Resource



Soboba Today

Tribal Council

We the members of the tribe with faith in the purposes of our Creator, with abounding pride in our ancient racial heritage and with the determination to promote, through united efforts, the general well-being of our tribe and to secure to ourselves and our descendants the rights, powers and privileges provided by law, do solemnly ordain and establish the Soboba Band of Luiseño Indians.

The mission of the Soboba Band of Luiseño Indians Tribal council shall be, to define, establish and safe guard the rights, powers and privileges of the tribe and its members, to improve the economic, moral, educational and health status of its members and to cooperate with and seek the assistance of the United States in carrying out mutual programs to accomplish these purposes by all possible means and to promote in other ways the common well-being of the tribe and its membership.

The Principles of the Constitution:

The Soboba Tribal Government consists of five Tribal Members who are elected by the general membership to Tribal Council for a staggered two year term. The Chairman is elected by a majority vote of the general membership but the positions for Vice-Chair, Tribal Secretary, Tribal Treasurer and Sergeant at Arms are decided by the elected council. Most tribal members vote in person on Election Day but to ensure representation of the complete general membership absentee ballots are available upon request.

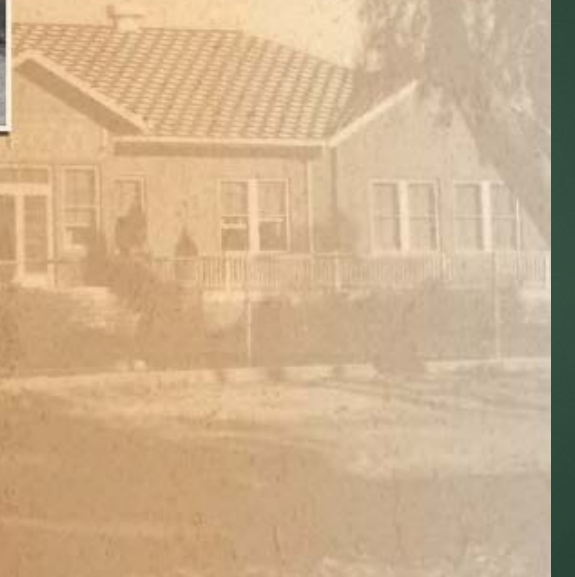


Soboba Today

Environmental Department



Soboba Cultural Center & Research Library



Soboba Today



Family Services



Soboba Today

Parks and Recreation



Soboba Today

Tribal Pre-School



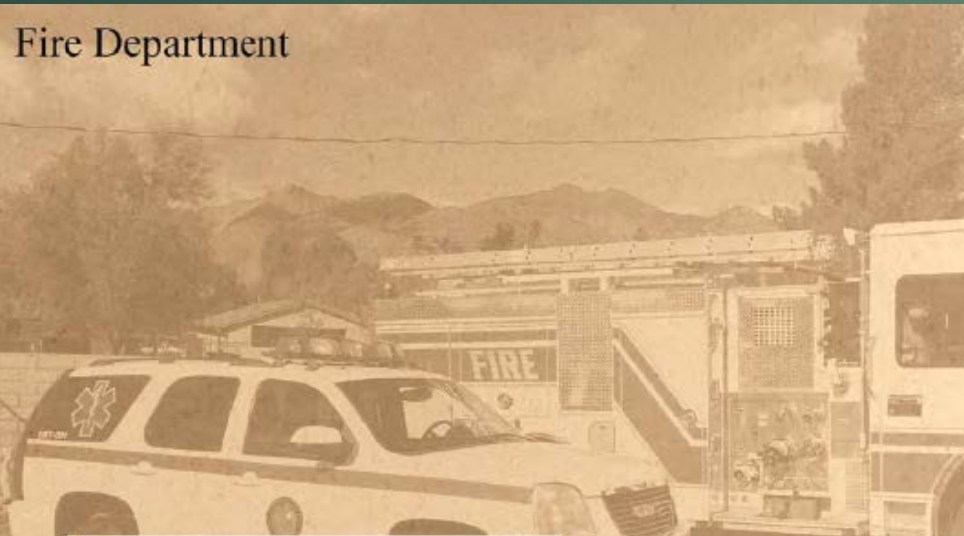
SOBOBA PRE-SCHOOL
Family Services Co

Noli School



Soboba Today

Fire Department



Department of Public Safety



DEPARTMENT
OF
PUBLIC SAFETY

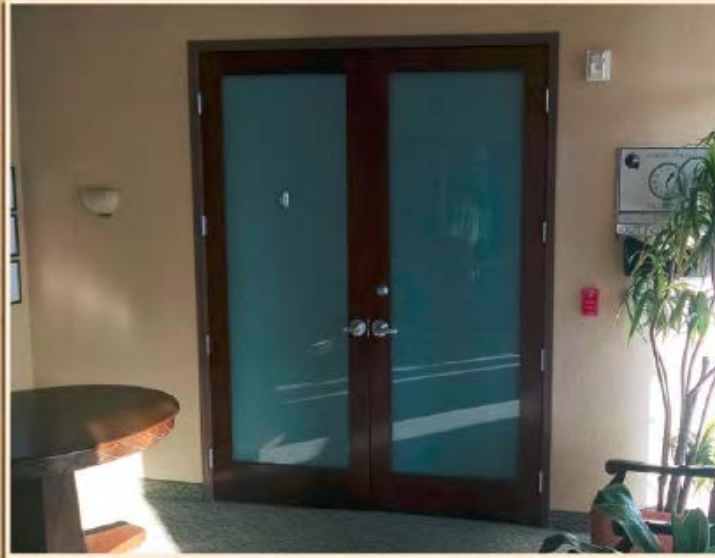
*"To Protect and Serve with
Cultural Integrity"*



Soboba Today

Credit Union

Soboba's "Cash Services" supplies alternative access to cash for the community as well as the tribe 24 hours a day 365 days a year. We offer the services of cash access through ATM, granting cash advances through existing credit accounts, the ability to cash personal checks and negotiate payroll checks. We can even set an electronic debit from your personal banking account for the times when you forget your check book. Our goal here at Cash services is to provide a professional environment with a personal touch while meeting the community's financial needs. We welcome both the community and the tribe.



Cash Services

Soboba Cash Services was created in 2002 in order for the Tribe to manage its own financial access within tribal entities. Cash Services is open 24 hours a day 365 days a year and provides the services of ATM withdrawals, cash advances, POS Debits, Payroll check cashing, Personal Check cashing and Travelers Check cashing.

Our mission is to give our client access to cash in as many ways as possible while honoring the tribe values and commitments. To provide superior customer service to our patrons, tribal entities and tribal members. To optimize Cash Service value by continuing to be an additional source of revenue for the tribe.



Soboba Today

Soboba Foundation



Soboba Foundation Inc.
23906 Soboba Rd. San Jacinto CA 92583

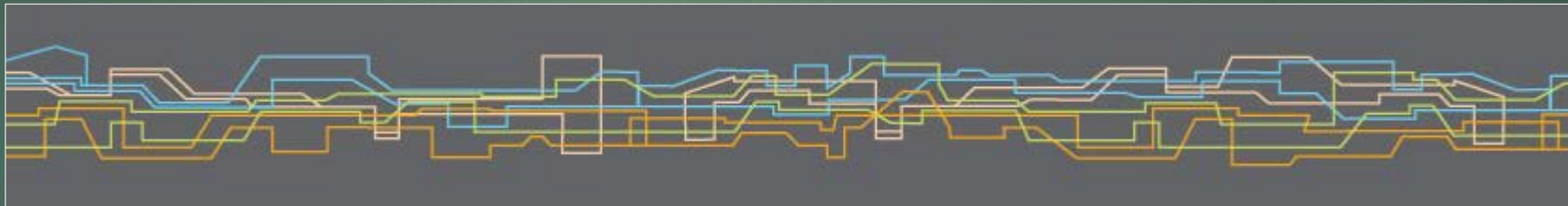
DATE

DOLLARS

Foundation



OPTIMUM GROUP



Optimum Group LLC
215 North Marengo Ave., Suite 362
Pasadena, CA 91101

February 11th, 2015

Economic Development

- ▶ Resource Planning
- ▶ Environmental Assessment & Planning
- ▶ Economic & Real Estate Development

Master Planning & Sustainability



- ▶ Land
 - ▶ Land Planning & Development
 - ▶ Schools
 - ▶ Hydrology & Flood Control
- ▶ Renewables & Sustainability
 - ▶ Wastewater Treatment For Irrigation Of Golf Course
 - ▶ Solar Energy
 - ▶ Battery Storage

Solar Energy

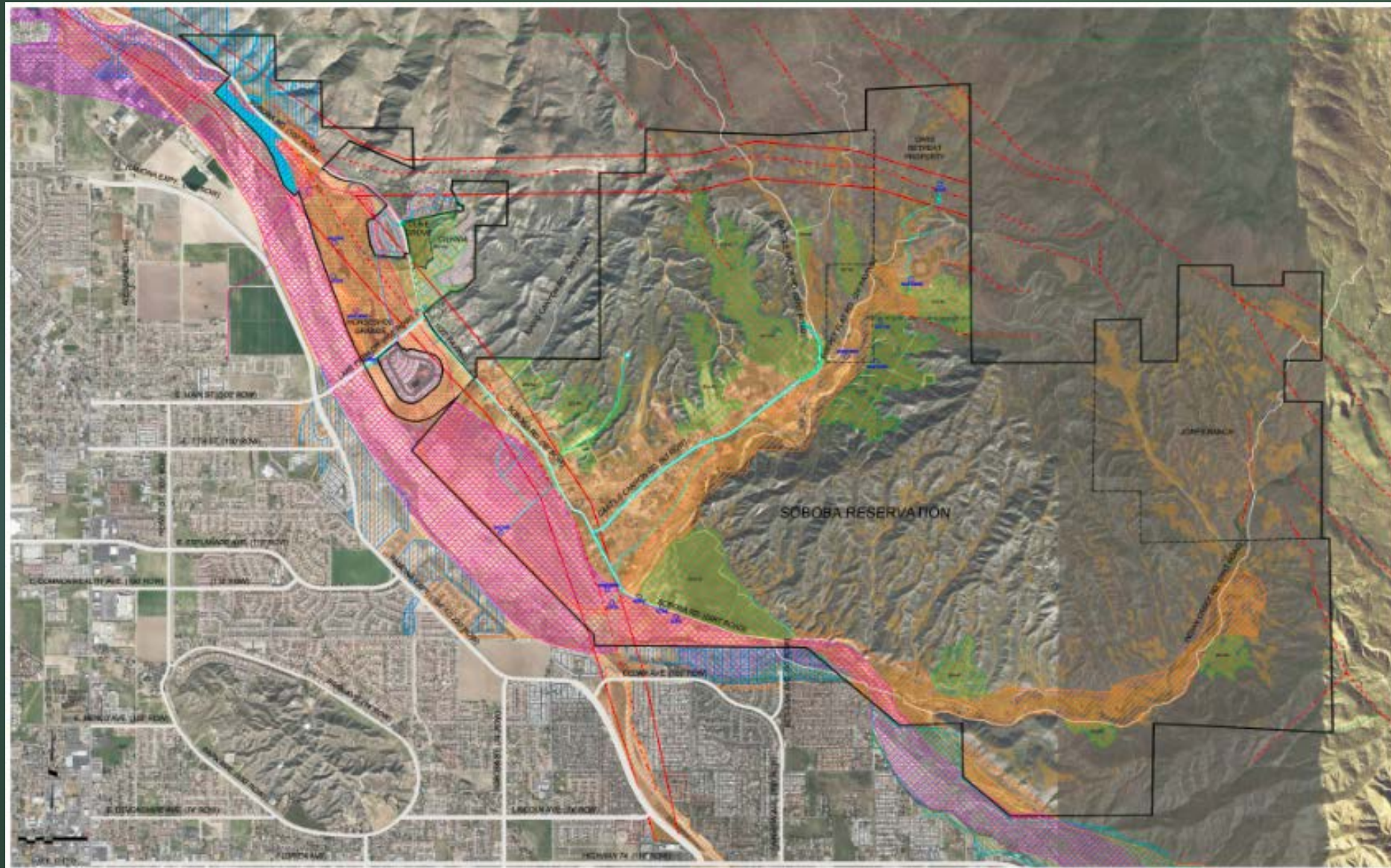
- ▶ Feasibility Study
- ▶ Pre-Development
- ▶ Development

Solar Feasibility Study

- ▶ Carry out geographical research & analysis
- ▶ Perform site evaluation
- ▶ Conduct preliminary research on available solar programs
- ▶ Perform economic analysis
- ▶ Propose strategy

Geographical Research & Analysis

Land Use Plan



Planning Area A



Accounts

- 1) Noli High
- 2) Ball Field #1 & Sports Complex
- 3) Ball Field # 2
- 4) D.W. # 4 (water pumps)
- 5) D.W. # 3 (water pumps)
- 6) I.W. # 2 (water pumps citrus)
- 7) D.W. # 1 (water pumps)

Planning Area B



Accounts

- 8) Administration Building
- 9) Pre-School
- 10) Tribal Hall
- 11) Public Works a & b

Planning Area C



Accounts

- 12) Casino Meter # 1
- 13) Casino Meter # 2

Planning Area D









Accounts

- 14) Oaks Meter #1 a,b & c
- 15) Oaks Meter #2
- 16) S.W. # 1 oaks

Energy Evaluation

Energy Consumption

Planning Areas & Meters	2 Year kwh Usage	Average Annual kwh Usage	MW DC PV Size For 100% Offset	MW AC PV Size For 100% Offset
Planning Area A	3,178,190	1,589,095	1.059	0.848
Ball Filed # 1 a	135,295	67,648	0.045	0.036
Ball Filed # 1 b	394,301	197,151	0.131	0.105
Ball Filed # 2	34,469	17,235	0.011	0.009
D.W. # 1	76,020	38,010	0.025	0.020
D.W. # 3	847,589	423,795	0.283	0.226
D.W. # 4	547,086	273,543	0.182	0.146
I.W. # 2	739,336	369,668	0.246	0.197
Noli High	404,094	202,047	0.135	0.108
Planning Area B	991,397 	495,699	0.330 	0.264
Administration Building	647,596	323,798	0.216	0.173
Pre-School	135,222	67,611	0.045	0.036
Public Works a	82,706	41,353	0.028	0.022
Public Works b	25,630	12,815	0.009	0.007
Tribal Hall	100,243	50,122	0.033	0.027
Planning Area C	22,199,558 	11,099,779	7.400 	5.920
Casino Meter # 1	15,998,039	7,999,020	5.333	4.266
Casino Meter # 2	6,201,519	3,100,760	2.067	1.654
Planning Area D	500,471 	250,236	0.167 	0.133
Oaks Meter # 1 a	33,265	16,633	0.011	0.009
Oaks Meter # 1 b	92,043	46,022	0.031	0.025
Oaks Meter # 1 c	254,008	127,004	0.085	0.068
Oaks Meter # 2	41,927	20,964	0.014	0.011
S.W. # 1 Oaks	79,228	39,614	0.026	0.021

Solar Programs & Regulations

- ▶ Net Energy Metering (NEM)
- ▶ Virtual Net Energy Metering (VNEM)
- ▶ Re-MAT PPA with Edison

Overall Solar Footprint



Financial Incentives

- ▶ Federal Investment Tax Credit up to 30% of the cost of solar project for qualified investors
- ▶ Department Of Energy grant available for Native American solar projects
 - a) For communities up to \$1m
 - b) For facilities up to \$0.5m for

Strategy

Strategy

Step 1 – Immediate Opportunity

- ▶ System 1 – 1.257 MW DC (1 MW AC) VNEM for planning areas A,B & D

Step 2 – Further Studies, Planning & Negotiation With Edison

- ▶ System 2 – 2.626 MW DC (2.1 MW AC) stand alone system for planning area C

Or

- ▶ System 3 – 5+ MW microgrid in conjunction with storage

Project Update

RFP Process

- ▶ Successfully Completed RFP Process
 - ▶ 2 CFR 200 / Soboba Procurement Policies
 - ▶ Received 6 Proposals
 - ▶ Wide pricing gap (\$2M – \$3M)

Proposal Evaluation Standards



- ▶ Project Experience
- ▶ Project Team
- ▶ Price
- ▶ Responsiveness to the Proposal
- ▶ Financial Capabilities
- ▶ References

Implementation

- ▶ EPC Contract
 - ▶ Equipment Specifications
 - ▶ Warranties
 - ▶ Payment Schedules
- ▶ Interconnection Agreement/Aggregate Net Energy Metering (NEM)
 - ▶ Southern California Edison
 - ▶ Easements
 - ▶ Cost of Grid Upgrades/Connection
 - ▶ Rule 21/Renewable Energy Tariff

Grant and Financing Process



- ▶ Grant Agreement Negotiations
- ▶ Environmental Clearance (NEPA)
- ▶ Budget Justification
- ▶ Federal ITC Consideration
 - ▶ Multiple Offers
 - ▶ Risk/Reward Considerations
 - ▶ Grant/ITC Complications

Phase I – 1MW AC Under Construction



Phase I – 1MW AC Under Construction



Phase I – 1MW AC Under Construction



Phase II – 1MW AC In Planning and Design Stage



- ▶ Next Steps:
- ▶ NEM Application
- ▶ DOE grant application
- ▶ Pre-project analysis
- ▶ Survey
- ▶ Geotechnical
- ▶ Environmental Constraints
- ▶ Phase I Environmental Site Assessment
- ▶ Cultural Resources
- ▶ Issue RFP for construction