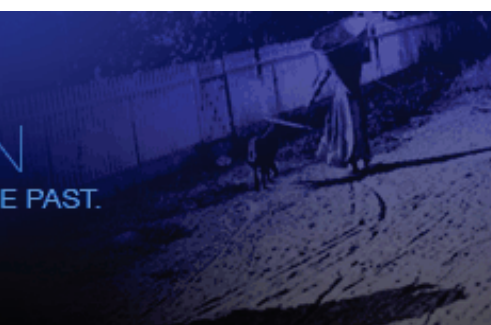
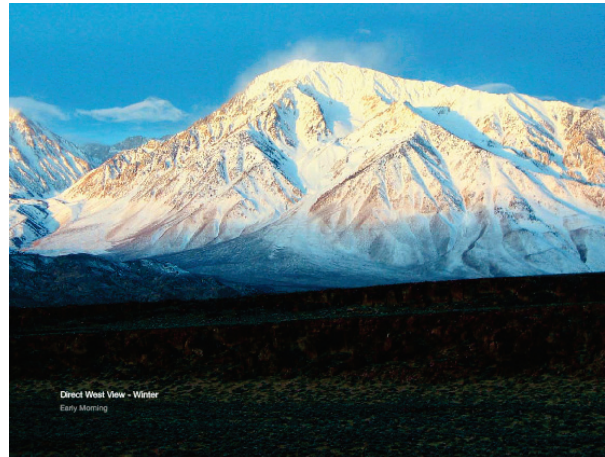




A SOVEREIGN TRIBAL NATION
MOVING FORWARD. RESPECTING TRADITIONS. HONORING THE PAST.



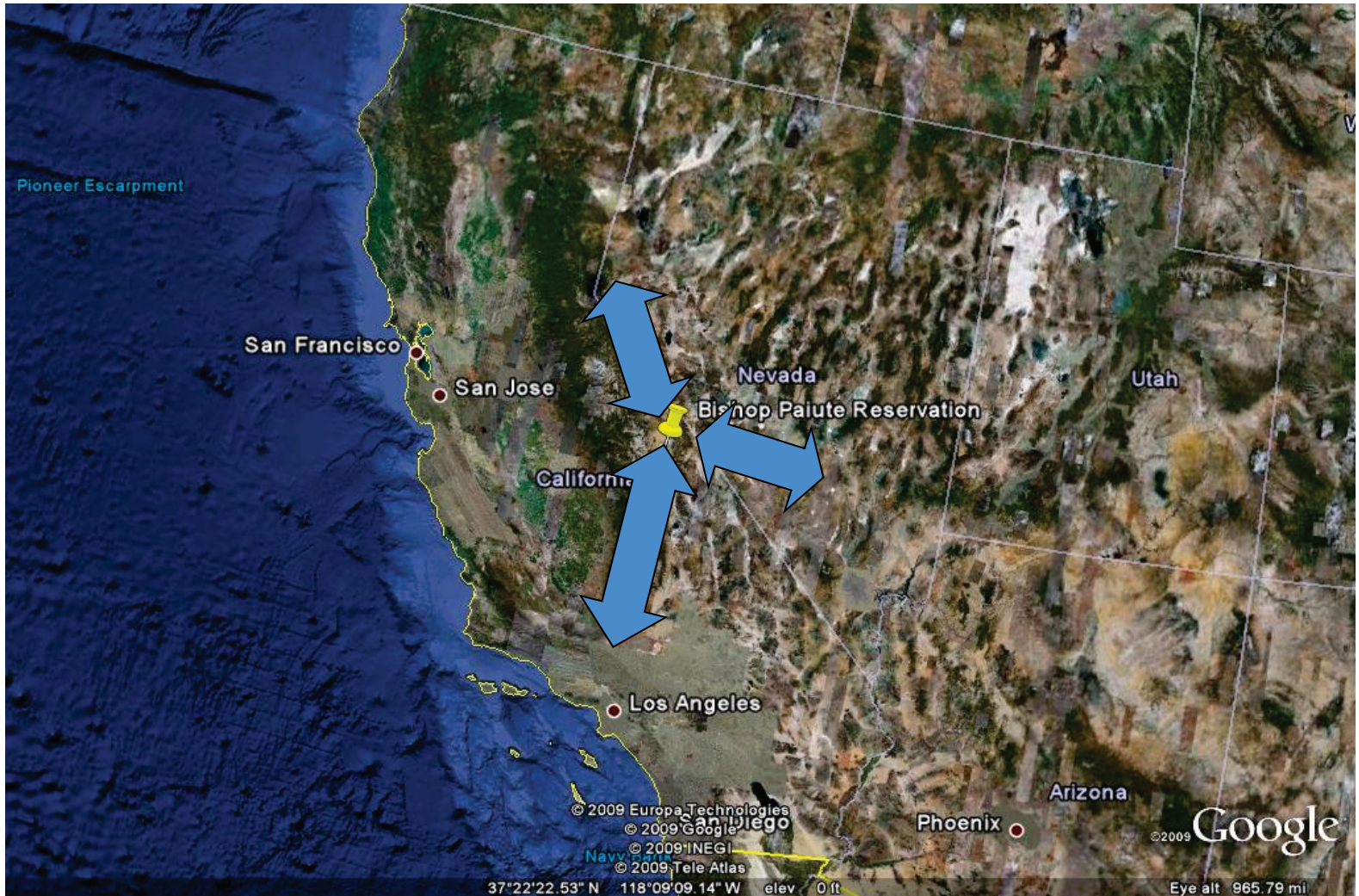
First Steps Toward Tribal Weatherization – Human Capacity Development (DE-PA36-09GO99022)



The Global View



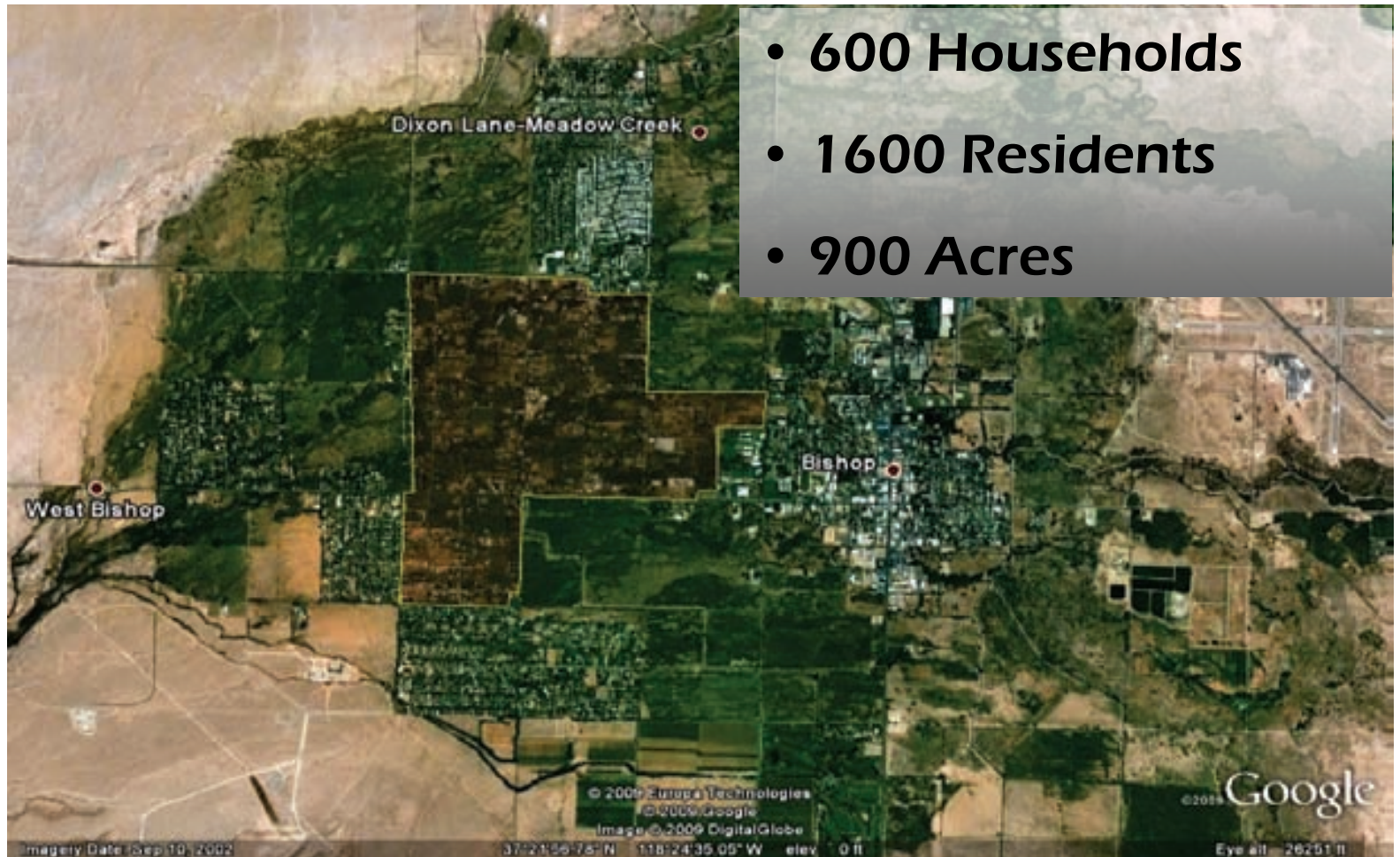
Bishop Paiute Reservation



Inyo County, California



Basic Demographics



Basic Demographics

- 461 Households
- 1600 Residents
- 900 Acres

First Steps Toward Tribal Weatherization

Eastern Sierra, assuming they are not served by another agency or have not developed infrastructure to implement weatherization programs. Alternatively, the Tribe can work with the outlying Tribes to assist in development of their weatherization programs.

Criterion 2: Project Description and Implementation Plan

Weight: 40%

Discussion of Existing Building Stock

Core weatherization competencies will focus on home weatherization techniques. As a result, only existing housing stock is shown below. Existing housing stock located on the Reservation totals to 447 homes and 14 apartments. Of the 447 homes, 90 units were built in 1939; 286 units were built from 1975 to 1989; and 71 units built since the early 1990s. The homes vary in size and have from 2 to 6 bedrooms. The 14 apartments were built in 1984. See Table 1 for a breakdown of the existing housing stock. The remaining homes of the 600 homes located on the Reservation are Tribal member-owned and built homes.

Table 1: Existing Housing Stock on Bishop Paiute Reservation (Bishop, CA)

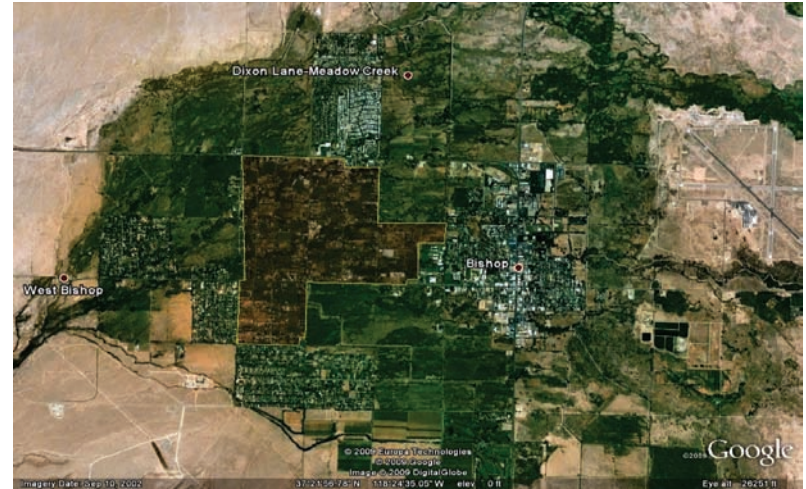
Construction	Units	Year Built	Bedrooms
BIA - Block and Wood Frame Home	90	1939	2-4 bedrooms
HUD 98-01	31	1975	2-6 bedrooms
HUD 98-02, 98-05, 98-15	52	1978	2-6 bedrooms
HUD 98-04	9	1979	2-6 bedrooms
Homes	21	1979 (average)	2-6 bedrooms
HUD 98-07, 98-08	42	1983	2-6 bedrooms
Apartments	14	1984	2-6 bedrooms
Manufactured Mobile Homes	99	1984 or older	2-6 bedrooms
Donated Manufactured Modular/Mobile Homes	10	1984-1989	2-6 bedrooms
HUD 98-09, 98-10, 98-16	22	1987	2-6 bedrooms
HIP Homes	18	1989-2009	2-6 bedrooms
HUD 98-11, 98-12	19	1991	2-6 bedrooms
HUD 98-13	13	1993	2-6 bedrooms
HUD B-14, B-14A, B-17, B-18	21	2001-2008	2-6 bedrooms
	461	1939-2008	

Description of Current Energy Use

Homes are heated with propane, wood, kerosene, heating oil and electricity. Wood stoves are the primary source for heating a home. Electricity is the secondary source, with extensive use of space heaters. Propane is used sparingly for heating the home because of the cost. Propane is used primarily for hot water and cooking. Swamp coolers are used during hot summer months to cool homes. Temperatures during December and January average lows of 22 degrees Fahrenheit and July averages highs of 98 degrees Fahrenheit.

Wood is supplied through numerous local suppliers located in Bishop, CA. Electricity is supplied by: Southern California Edison, P.O. Box 800, Rosemead, CA 91770, (800) 990-7788. Both primary

Page 5 of 10



- Reservation housing is projected to increase to nearly 700 homes and over 1,800 residents by 2020.

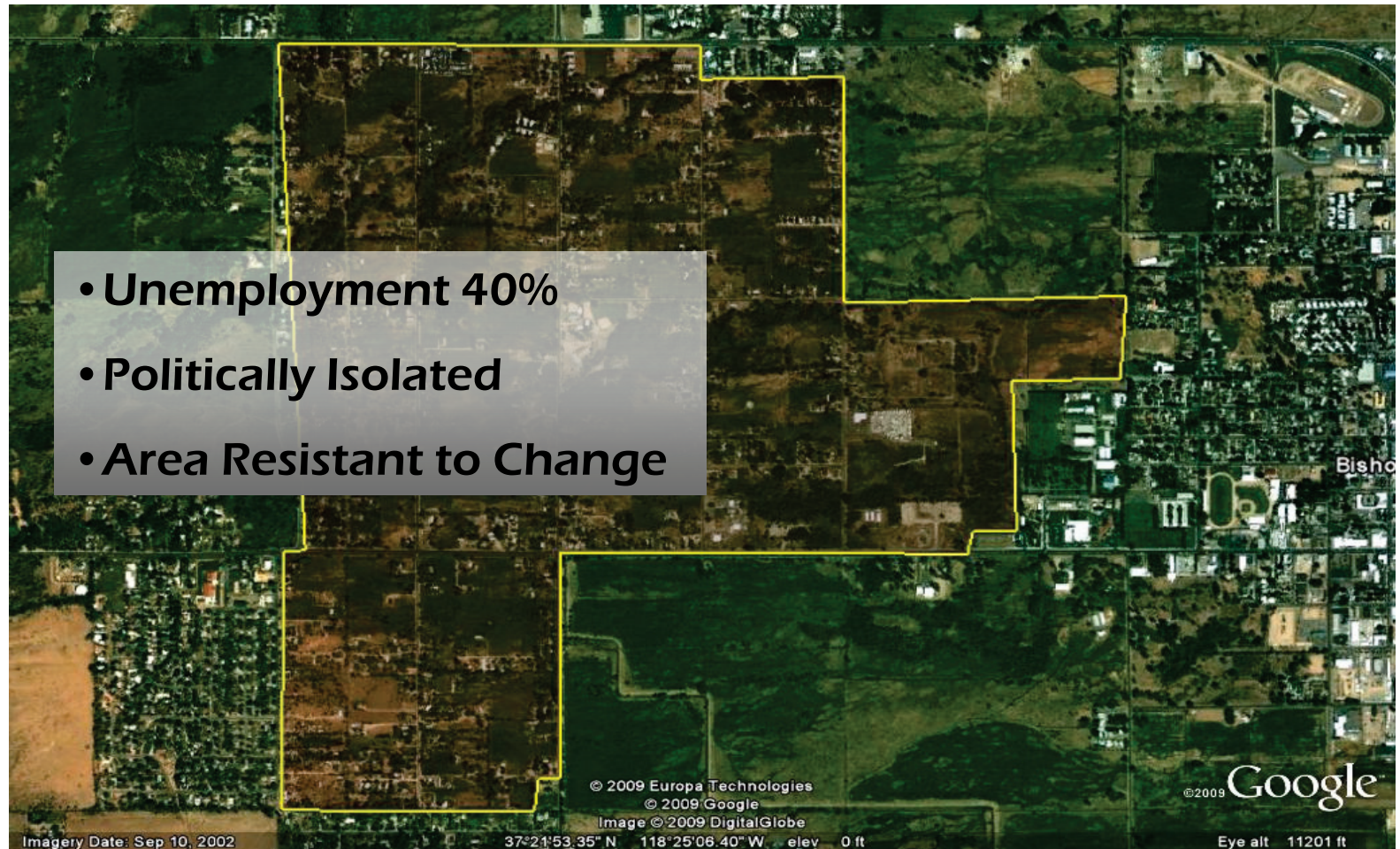


What is going on in Bishop Paiute? The Good!

- Largest Employer
- Planning Intensive
- Sustainability

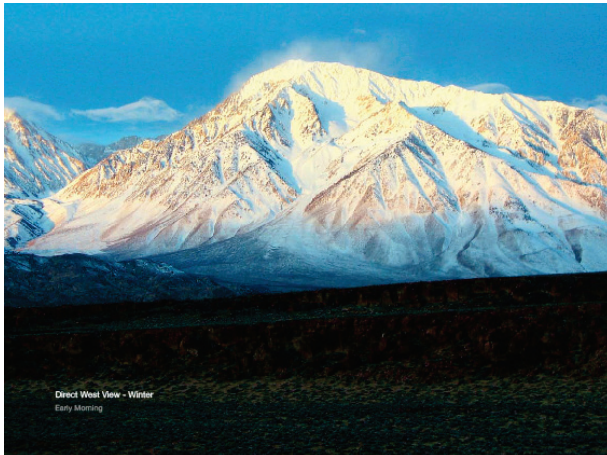


What is going on in Bishop Paiute? The Bad!



The Weather

- Climate is can be characterized as moderate extremes
 - ❖ 4000 Heating Degree Days
 - ❖ 1000 Cooling Degree Days
 - ❖ 8" Snow
 - ❖ 6" Rain



Housing Stock

- 461 Homes
 - ❖ 90 built in 1939
 - ❖ 99 trailers
 - ❖ All but 21 built before 1993



Weatherization Training Program

- Phase 1: Development of human capacity to deliver consistent, high-quality weatherization services; and
- Phase 2: Development and implementation of a Tribal weatherization program that delivers weatherization services to the Reservation.



Phase 1

- Phase 1: Development of human capacity to deliver consistent, high-quality weatherization services
 - ❖ Select and train (1) Weatherization Manager and (4) Weatherization Installers
 - ❖ PG&E Training Center in Stockton, CA
 - ❖ This effort is grant supported



Phase II

- Development and implementation of a Tribal weatherization program that delivers weatherization services to the Reservation
 - ❖ This effort will be tribally supported



Moving Forward

- Hired a “Green the Rez” Campaign Manager
 - ❖ Comprehensive Energy Plan
 - ❖ Residential Community Energy Efficiency Assessments
 - ❖ Funding
 - ❖ Community and Business Outreach

