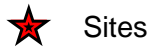


Manhattan Project National Historical Park Sites

National Park Service
U.S. Department of the Interior



Legend



Sites

OFFICE: Lands Resources Program

REGION: Intermountain Region

Pacific West Region

Southeast Region

PARK: MAPR

MAP NUMBER: 540/108,834-C (page 1 of 4)

DATE: September 2012

N



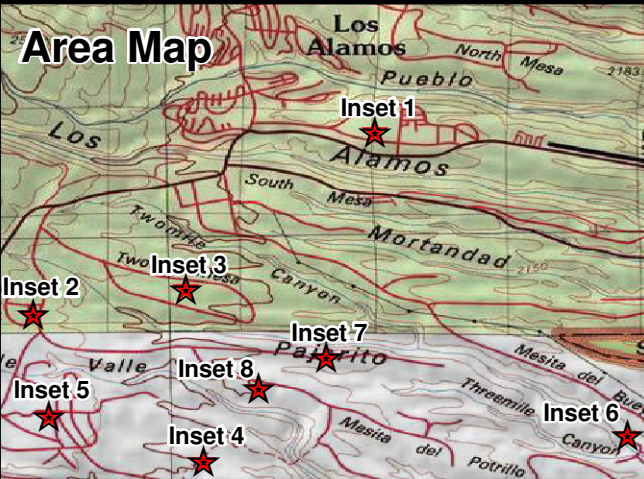
0 125 250 500 750 1,000




Miles


Manhattan Project National Historical Park Sites (Los Alamos, New Mexico)

National Park Service
U.S. Department of the Interior


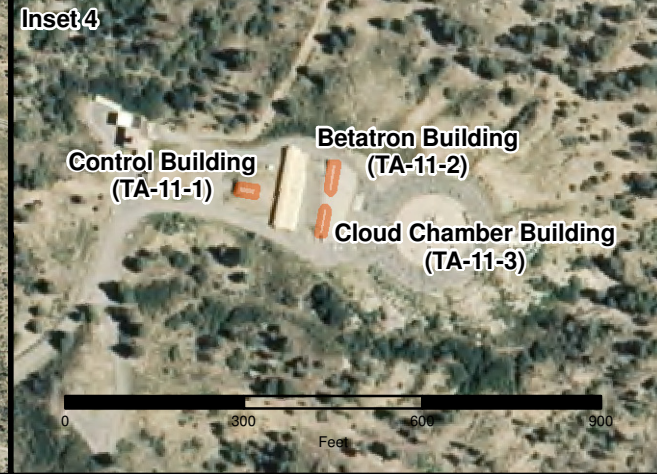


Legend

 National Park Service Sites

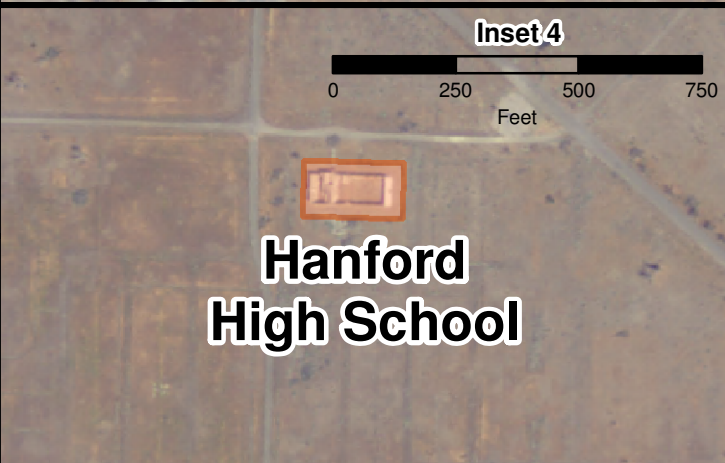
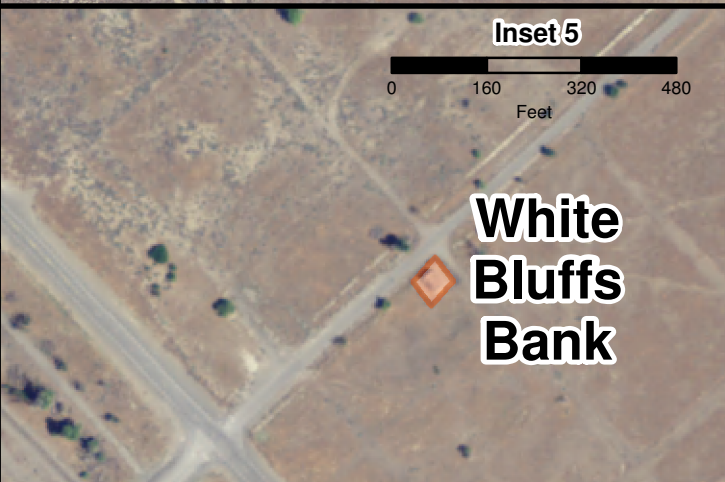
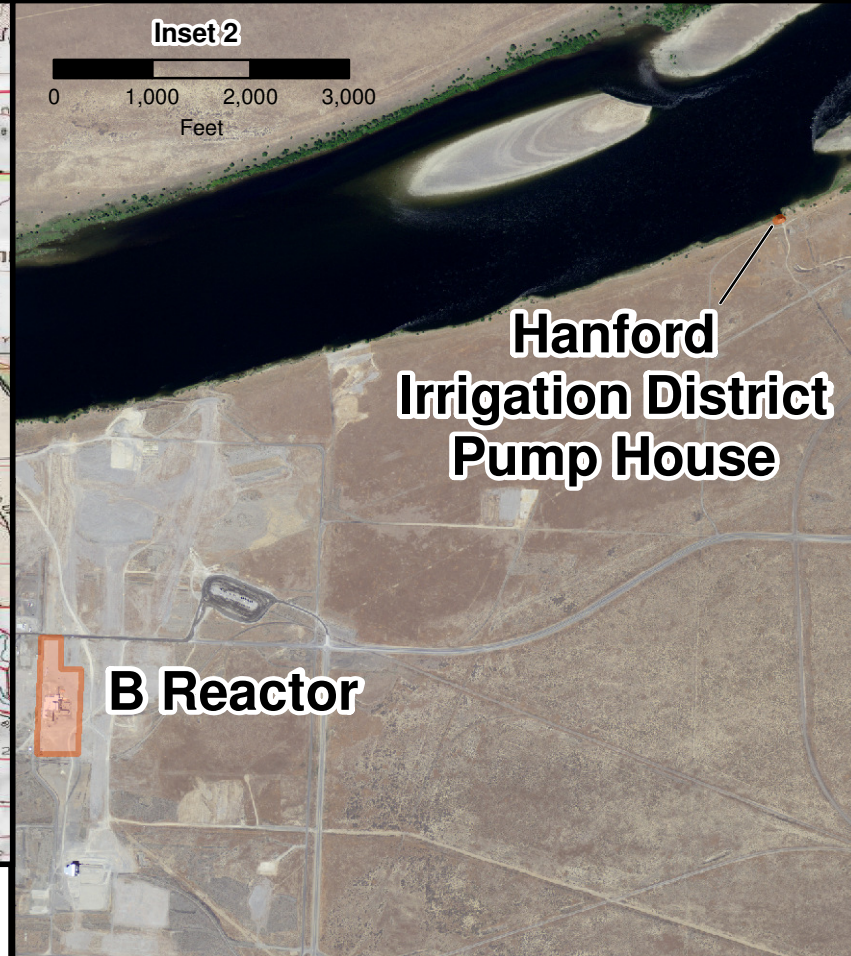
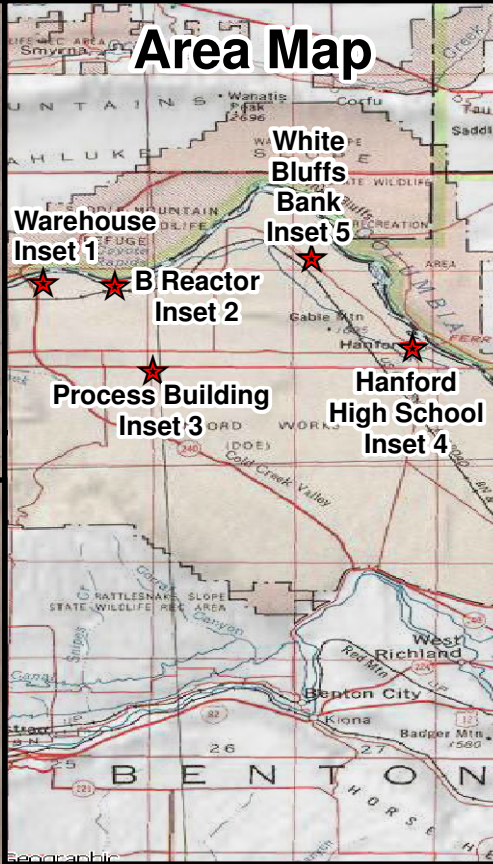
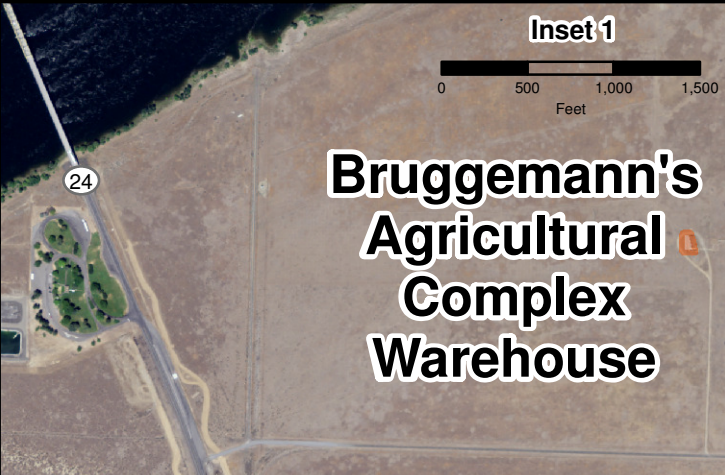
 Department of Energy Sites

OFFICE: Lands Resources Program
REGION: Intermountain Region
PARK: MAPR
MAP NUMBER: 540/108,834-C (page 2 of 4)
DATE: September 2012






Manhattan Project National Historical Park Sites (Hanford, Washington)

National Park Service
U.S. Department of the Interior



Legend

 National Park Service Sites

 Department of Energy Sites

N

OFFICE: Lands Resources Program
REGION: Pacific West Region
PARK: MAPR
MAP NUMBER: 540/108,834-C (page 3 of 4)
DATE: September 2012

Manhattan Project National Historical Park Sites (Oak Ridge, Tennessee)

National Park Service
U.S. Department of the Interior



Legend



- National Park Service Sites
- Department of Energy Sites



OFFICE: Lands Resources Program
REGION: Southeast Region
PARK: MAPR
MAP NUMBER: 540/108,834-C (page 4 of 4)
DATE: September 2012

