

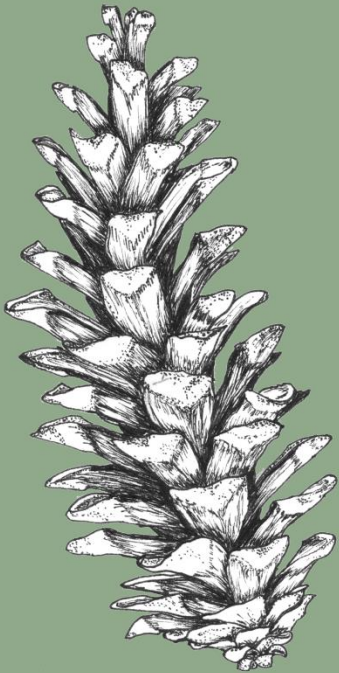
Sault Ste. Marie Tribe of Chippewa Indians

A Climate Action Champion Community

Tribal Leaders Forum
Tribal Energy Systems: Climate
Preparedness and Resiliency

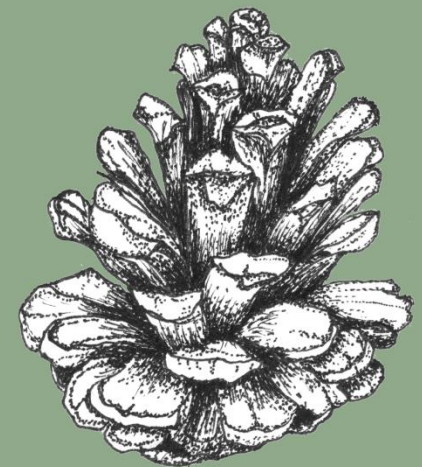
4 March 2015
Thunder Valley Resort

Kathleen Brosemer
Environmental Program Manager



A White House Initiative

- To recognize communities that are leading in mitigation and adaptation to climate change.
- 16 communities were selected
- Cities, towns, and Tribes
- San Francisco, Boston, Portland, Knoxville, Oberlin
- Two Tribes: Blue Lake Rancheria, a Sault Tribe



Climate Change is Upon Us

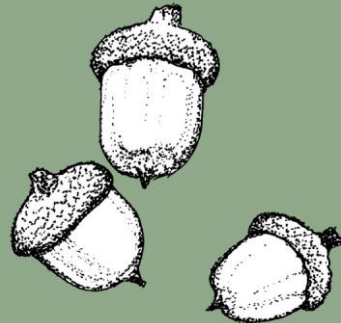
2014 was the warmest year on record

14/15 of warmest years have been this century

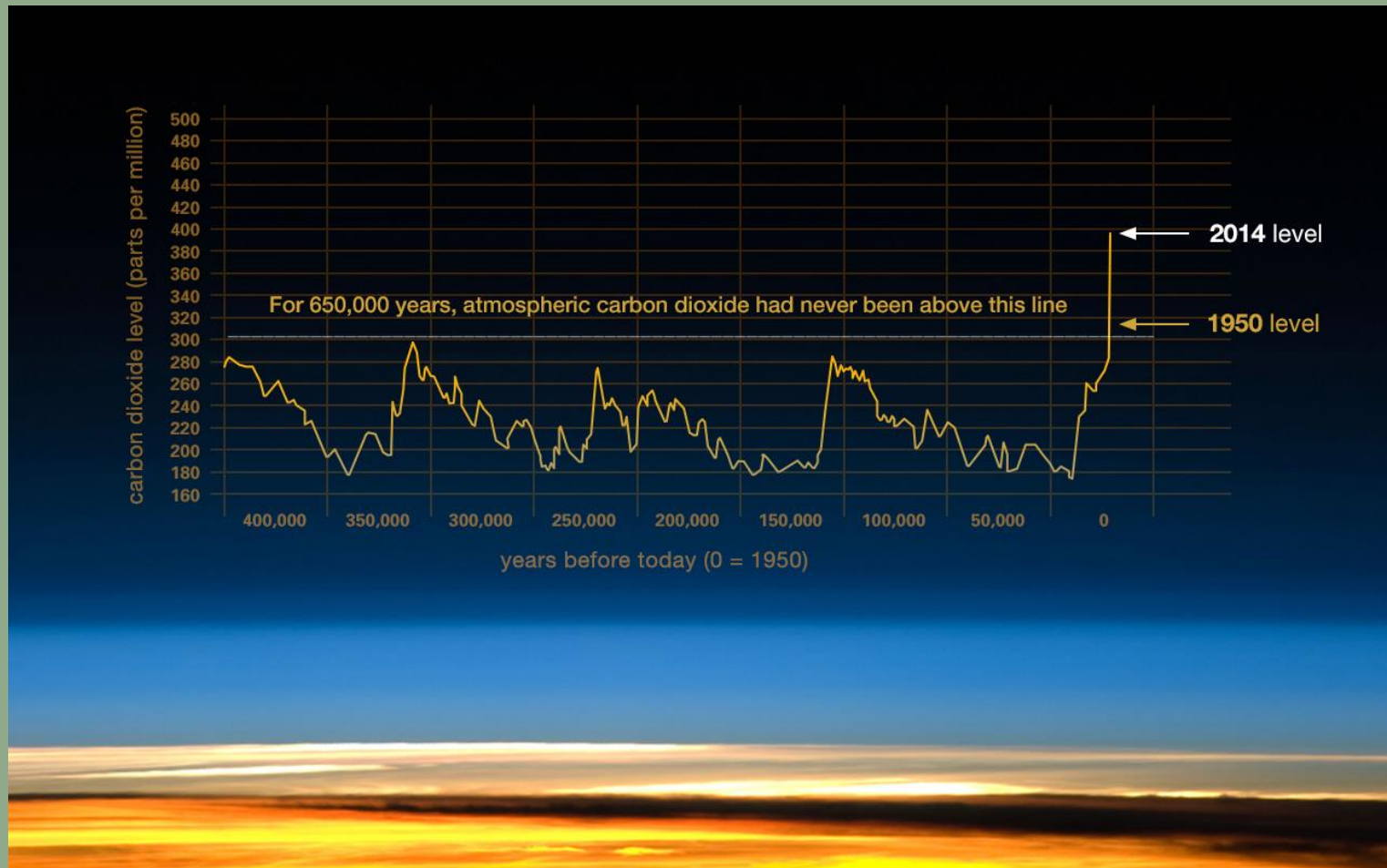
Global cold record hasn't been broken since 1911

Every single month for the past thirty years has been above the long term average...

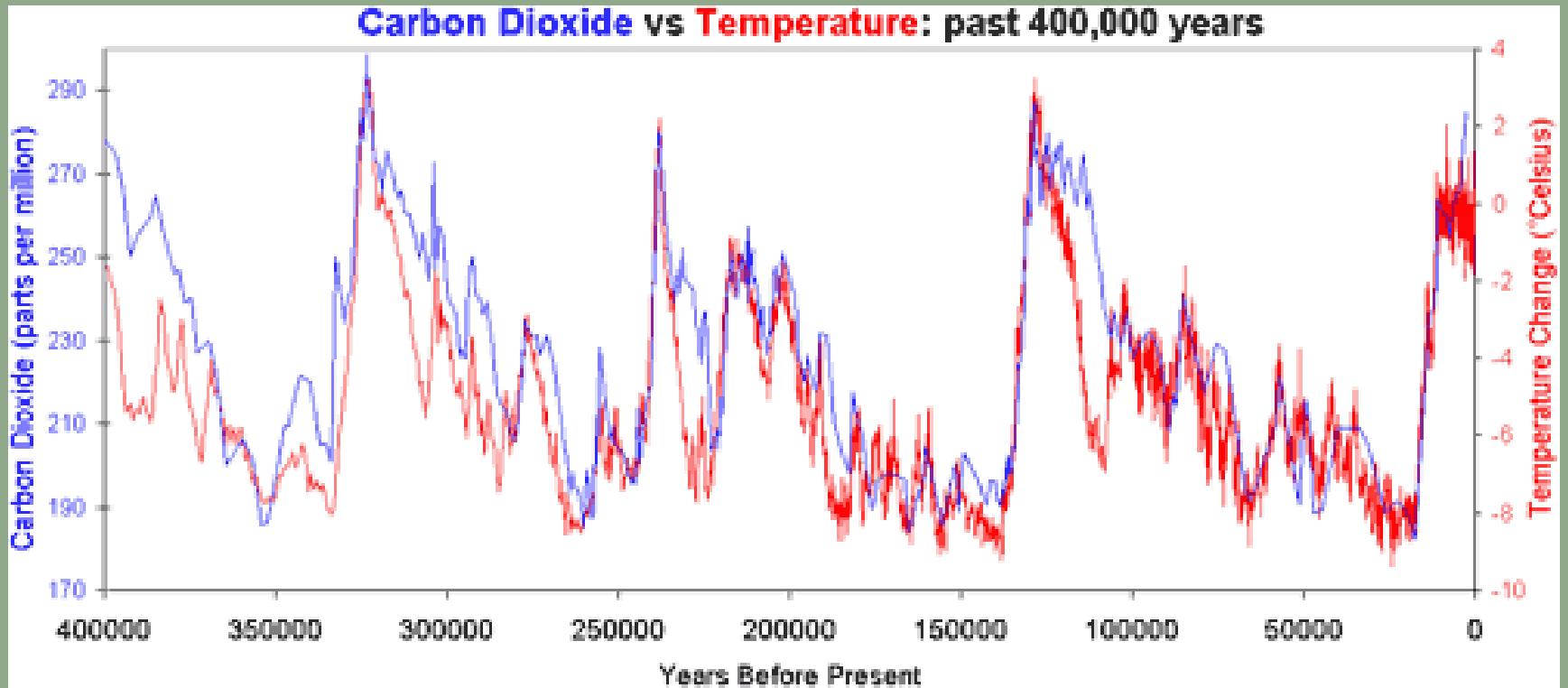
And even the Pope says so!



Here's why:



And what it does:



now you see it

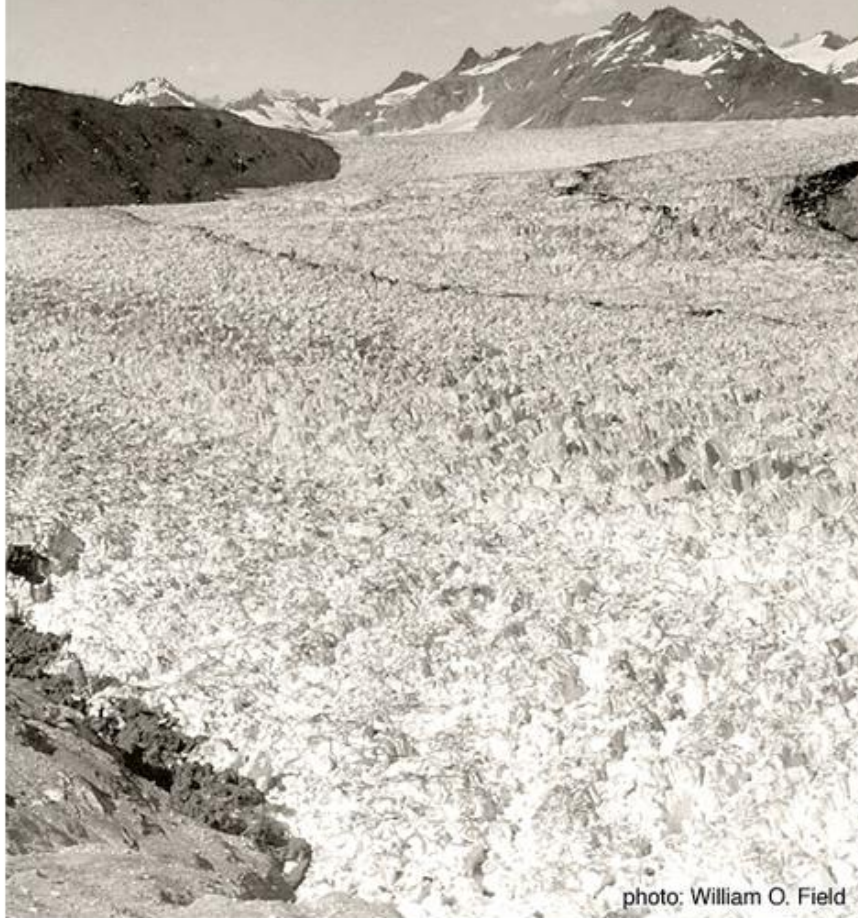


photo: William O. Field

now you don't

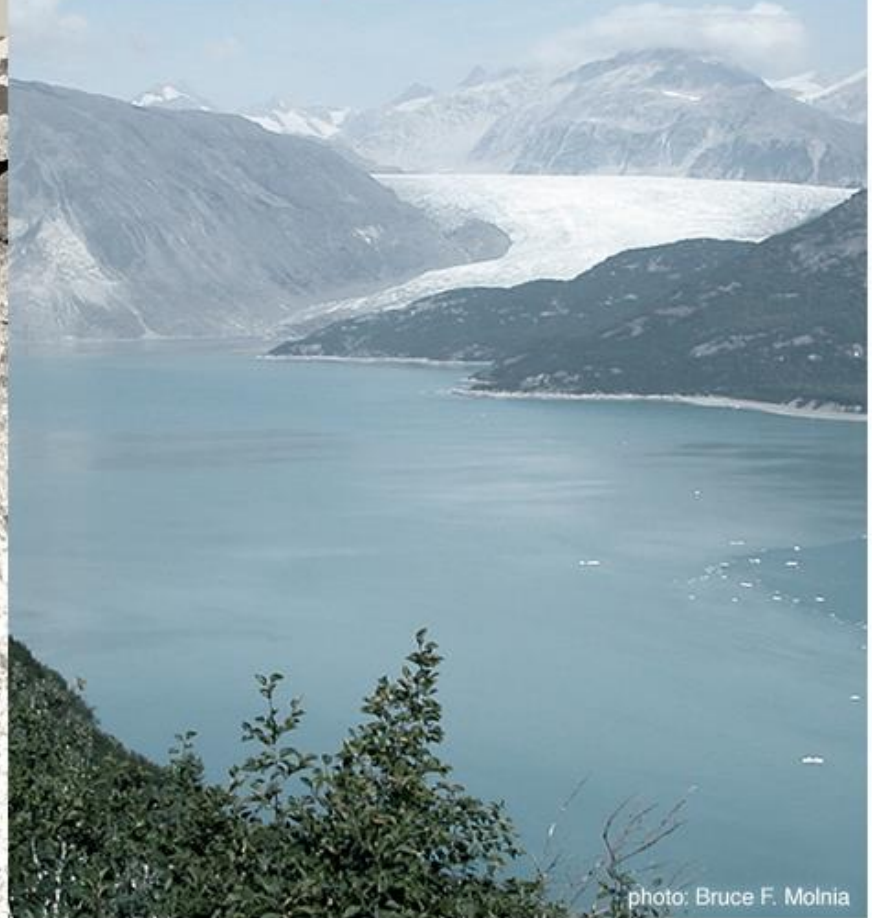


photo: Bruce F. Molnia

Muir Glacier, Alaska: August 13, 1941 and August 31, 2004



CLIMATE 365

climate365.tumblr.com | go.nasa.gov/climate365

Mitigation

Means trying to slow it down

Examples:

- Saving energy
- Using renewable energy
- Reducing garbage
- Buy local
- Produce your own





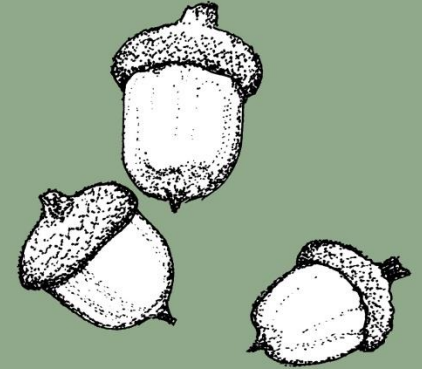
DO NOT ENTER
12' CLEARANCE



Adaptation

Means preparing for what's ahead:

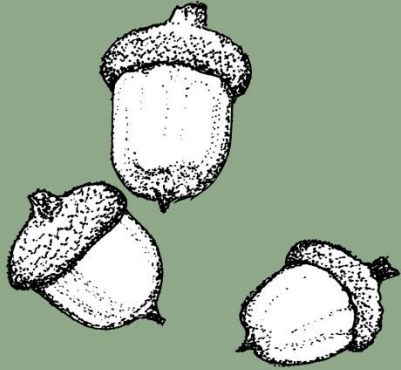
- Extreme weather
- Changes to plant/animal life
- Disruptions to global supply







Why Sault Tribe?



Everything we do is
Mitigation
or
Adaptation!

Prepare for emergencies,
take care of our neighbors,
produce our own foods/medicines,
teach others how to be self-sufficient,
save energy,
insulate, air seal,
change out lighting,
reduce dependence on the global supply chain

The Sault Tribe

Largest Tribe east of the Mississippi

Federal recognition in 1975

Service area is seven counties

Treaty of 1836 - No reservation in treaty

Since 1975,

Nine housing sites, 908 residents

Seven health centers

Five casinos

All net earnings returned in services – health, food,
education, housing, etc.

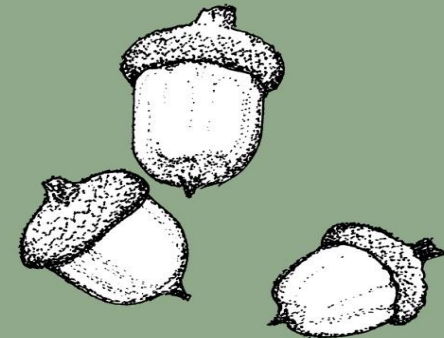






Many Plans and Strategies

- * Integrated Solid Waste Management Plan
- * Energy Strategy
- * Forest Management Plan
- * Emergency Operations Plan
- * Wetlands Strategy
- * Integrated Resource Management Plan
- * Sustainable Development Code
- * Land Use Strategy
- * Etc.





South Pond

~5.5 Acre
Proposed wetland

Proposed berm
~600'

S-Shunk Rd

Existing
10 Acre wetland

Some of our achievements:

- * Energy Audits on 39 governmental buildings and 25 homes
- * Lighting retrofits to 21 governmental buildings
- * Every rental home (438 dwellings) energy retrofits
- * Offsite energy work – 90 homes
- * Staff trained in Building Science
- * Fisheries fleet vehicles operating on waste cooking oil
- * Active transportation initiatives in all communities
- * Wind power study
- * Waste reduction initiatives

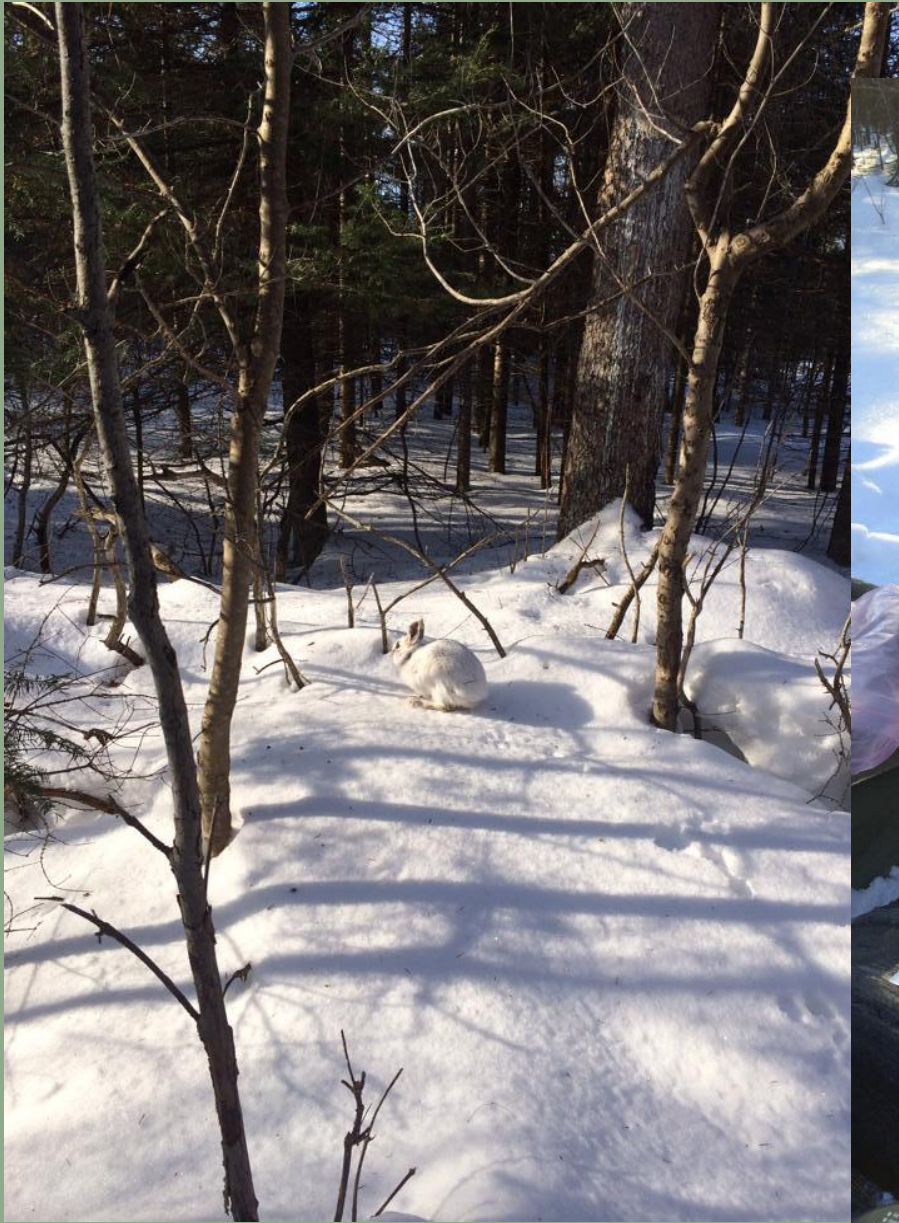




A few more:

- * Vulnerability Assessments - clan animals
- * Wetland strategy and capacity to delineate wetlands
- * Invasive species work – aquatic and terrestrial
- * Native species seed bank
- * Traditional Foods program
- * Steady increases to Tribal hunt/fish/gather permits
- * Traditional Medicines program
- * Law Enforcement EOP
- * Health Div MOUs
- * Rural and Ready symposia



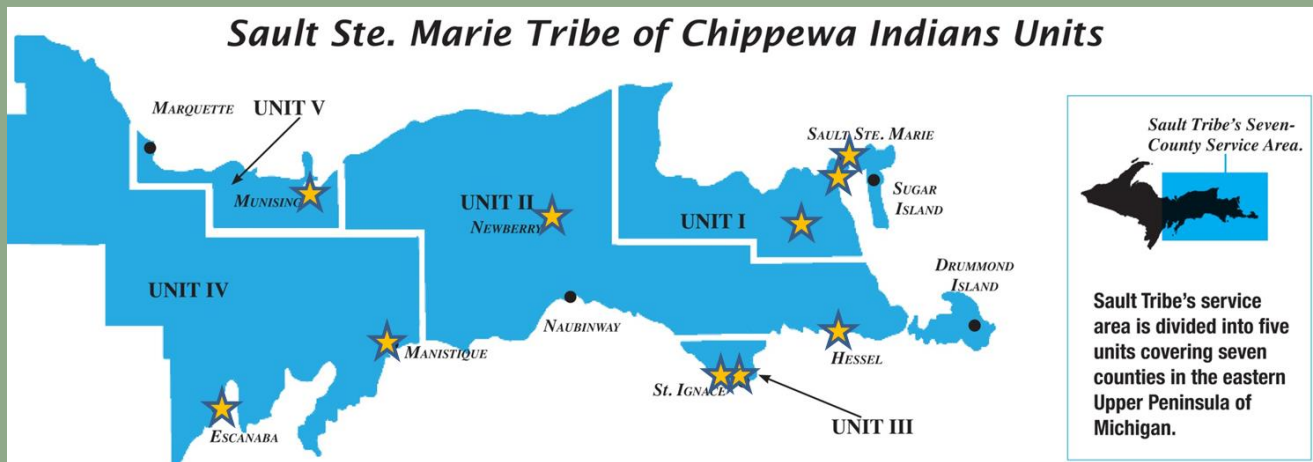


Communication / Notification

- Sault Tribe Emergency Alert System (STEAS)



Tribal Emergency Alert System Locations



Sault Ste Marie: Sault Tribe Enrollment Office and at Odenaang Warehouse

Kincheloe: Sault Tribe Housing Office (Parkside)

Hessel: Across from Tribal Center

St. Ignace: Sault Tribe Community Center and at Lambert Center

Newberry: Sault Tribe Health Center

Wetmore: Sault Tribe Community Center

Escanaba: Sault Tribe Community Center

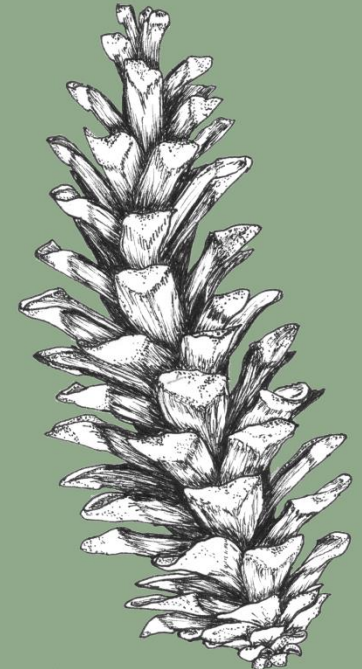
Manistique: Pump house inside Sault Tribe Housing Community





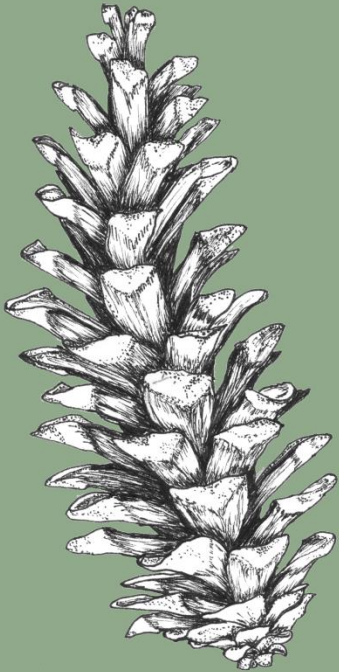
Next? Net Zero Energy!

- * Follow up on energy audit results – insulate, upgrade heating systems
- * Renewables at point of use – solar, wind, GSHPs for heat and ac
- * Reinstall solar thermal heat
- * New Wind Power Study
- * Expand the waste cooking oil fleet
- * Wood heat initiatives
- * Clean Diesel upgrades
- * Find funds to hire an Energy Manager



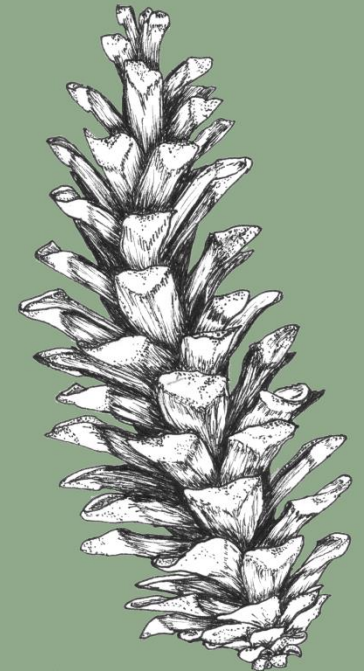
Next? Zero Waste!

- * Divert food waste from hospitality sector
- * Reuse Center for construction/demolition waste
- * Expand recycling opportunities
- * Backyard composting program, compost demonstration sites



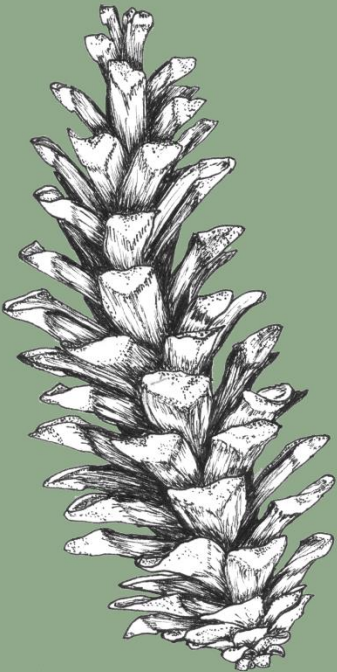
Next? Local Self-Reliance!

- * Plant more fruiting trees and shrubs in each community, year over year
- * Increase participation in traditional food harvest
- * Add community gardens, kitchens, farmers markets
- * Add skills classes (canning, drying, etc)
- * Sustainable Community Code



Next? Find Money!

- * This award didn't come with \$
- * The prize is: a person to help us access federal funding
- * Extra points in certain competitive grant applications
- * Help accessing nongovernmental funding (e.g. Foundations)
- * We have a moment to make the most of this





there is no planet b