

Figure 3.6-10a: EPA Sites in Region 1

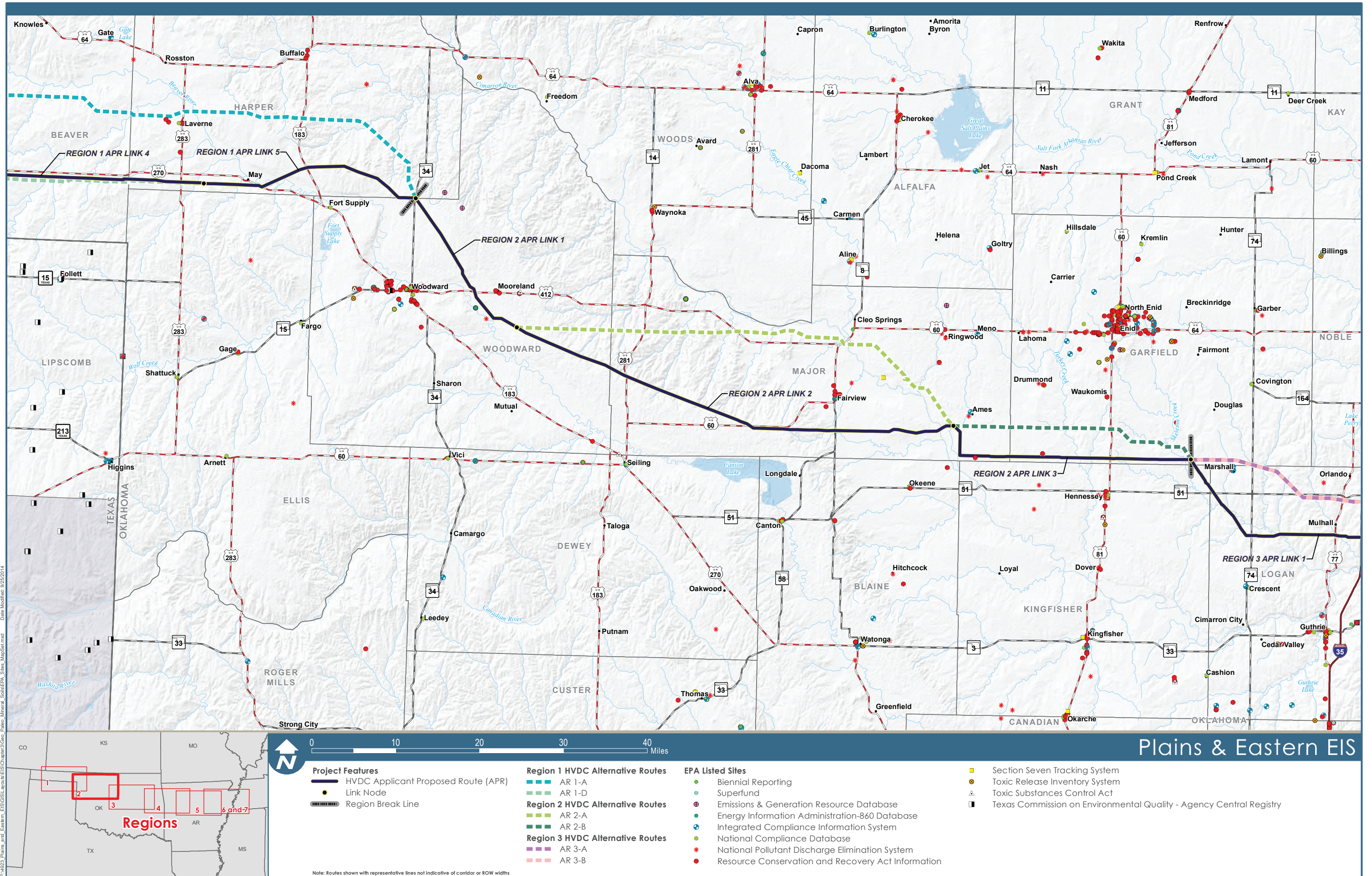
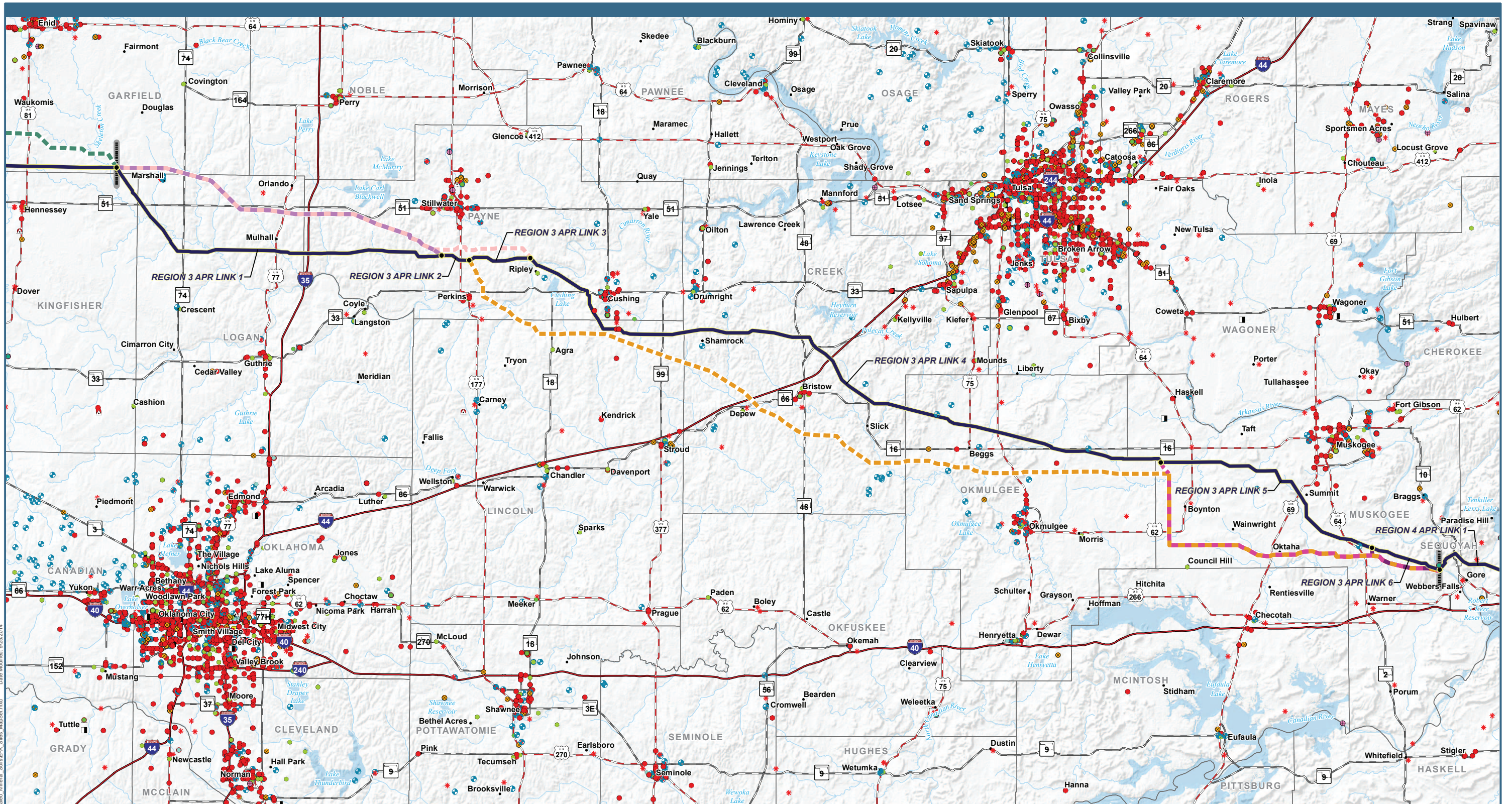
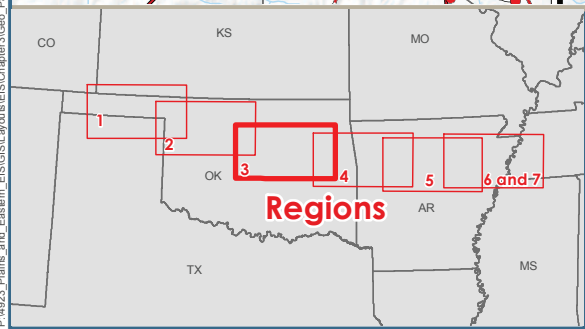


Figure 3.6-10b: EPA Sites in Region 2



P:\4823_Plains_and_Eastern_EIS\GIS\Layers\GIS\Chapter3\Geo_Paloo_Mineral_Sites_MapSet.mxd
 Date Modified: 9/25/2014



0 10 20 30 40 Miles

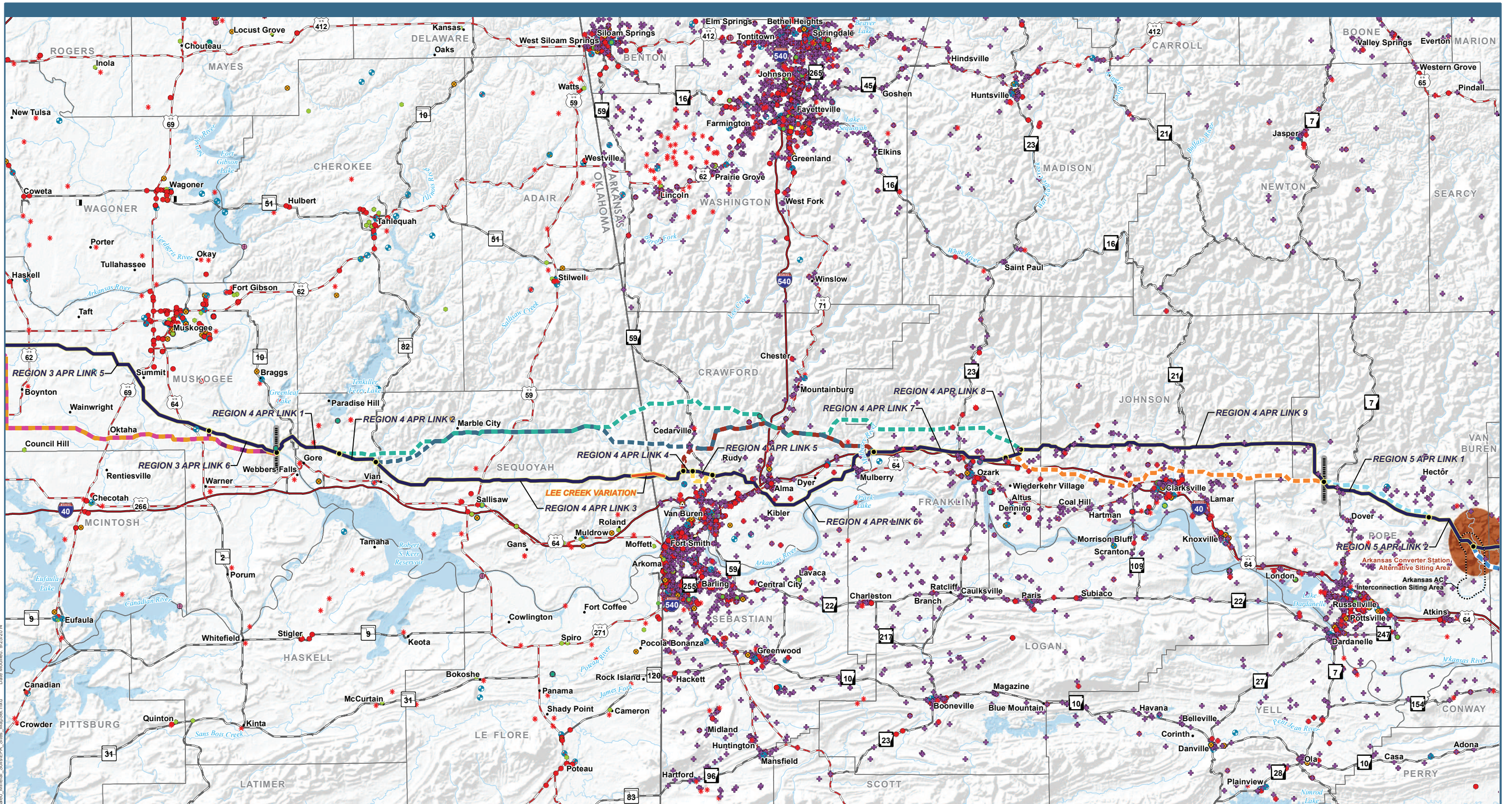
Plains & Eastern EIS

<p>Project Features</p> <ul style="list-style-type: none"> — HVDC Applicant Proposed Route (APR) ● Link Node - - - Region Break Line 	<p>Region 2 HVDC Alternative Routes</p> <ul style="list-style-type: none"> — AR 2-B <p>Region 3 HVDC Alternative Routes</p> <ul style="list-style-type: none"> — AR 3-A — AR 3-B — AR 3-C — AR 3-D — AR 3-E 	<p>EPA Listed Sites</p> <ul style="list-style-type: none"> ● Biennial Reporting ● Superfund ● Emissions & Generation Resource Database ● Energy Information Administration-860 Database ● Integrated Compliance Information System ● National Compliance Database * National Pollutant Discharge Elimination System ● Resource Conservation and Recovery Act Information 	<ul style="list-style-type: none"> ■ Section Seven Tracking System ● Toxic Release Inventory System ▲ Toxic Substances Control Act ■ Texas Commission on Environmental Quality - Agency Central Registry
---	---	---	--

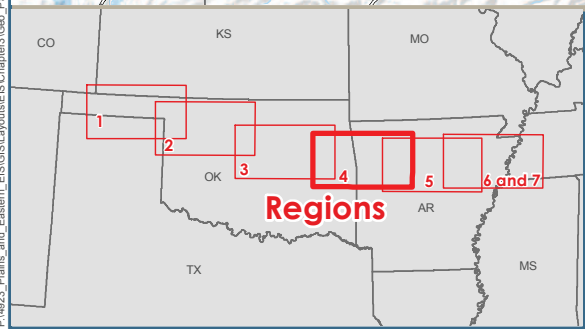
Note: Routes shown with representative lines not indicative of corridor or ROW widths

Data Sources: EPA Listed Sites (EPA 2014b)

Figure 3.6-10c: EPA Sites in Region 3



P:\4823_Plains_and_Eastern_EIS\GIS\Layouts\EIS\Chapter04\Geo_Popup_Mineral_Soils\EPA_Sites_Map_Sat.mxd
 Date Modified: 02/22/2014



0 10 20 30 40 Miles

Project Features

- HVDC Applicant Proposed Route (APR)
- Link Node
- Region Break Line
- Converter Station Siting Area
- Lee Creek Variation
- AC Interconnection Siting Area

Region 3 HVDC Alternative Routes

- AR 3-C
- AR 3-D
- AR 3-E

Region 4 HVDC Alternative Routes

- AR 4-A
- AR 4-B
- AR 4-C
- AR 4-D
- AR 4-E

Region 5 HVDC Alternative Routes

- AR 5-A
- AR 5-B

EPA Listed Sites

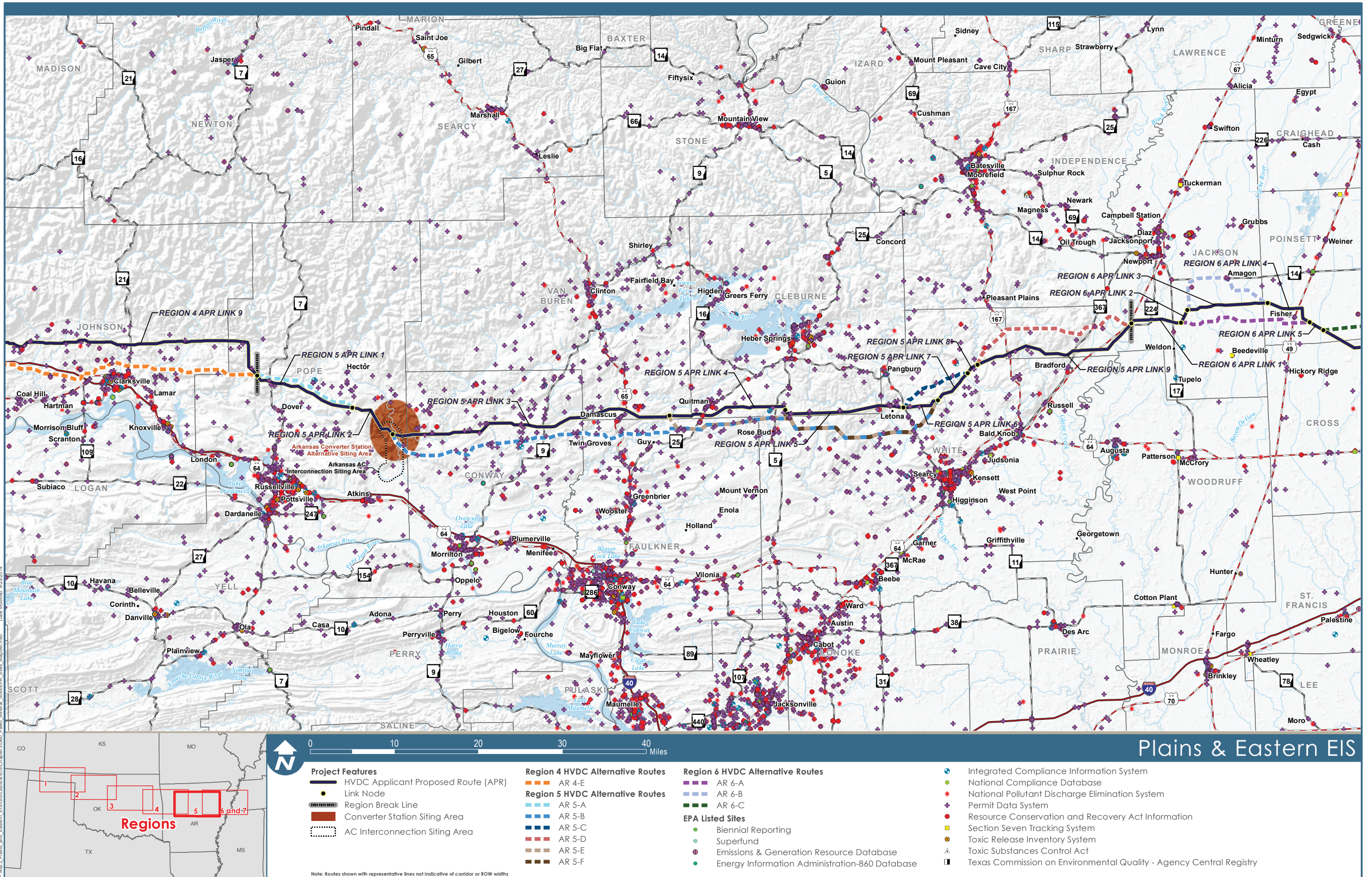
- Biennial Reporting
- Superfund
- Emissions & Generation Resource Database
- Energy Information Administration-860 Database
- Integrated Compliance Information System

- Leaking Underground Storage Tank - American Recovery and Reinvestment Act
- National Compliance Database
- * National Pollutant Discharge Elimination System
- + Permit Data System
- Resource Conservation and Recovery Act Information
- Section Seven Tracking System
- Toxic Release Inventory System
- △ Toxic Substances Control Act
- Texas Commission on Environmental Quality - Agency Central Registry

Note: Routes shown with representative lines not indicative of corridor or ROW widths

Plains & Eastern EIS

Figure 3.6-10d: EPA Sites in Region 4



Data Sources: EPA Listed Sites (EPA 2014b)

Figure 3.6-10e: EPA Sites in Region 5

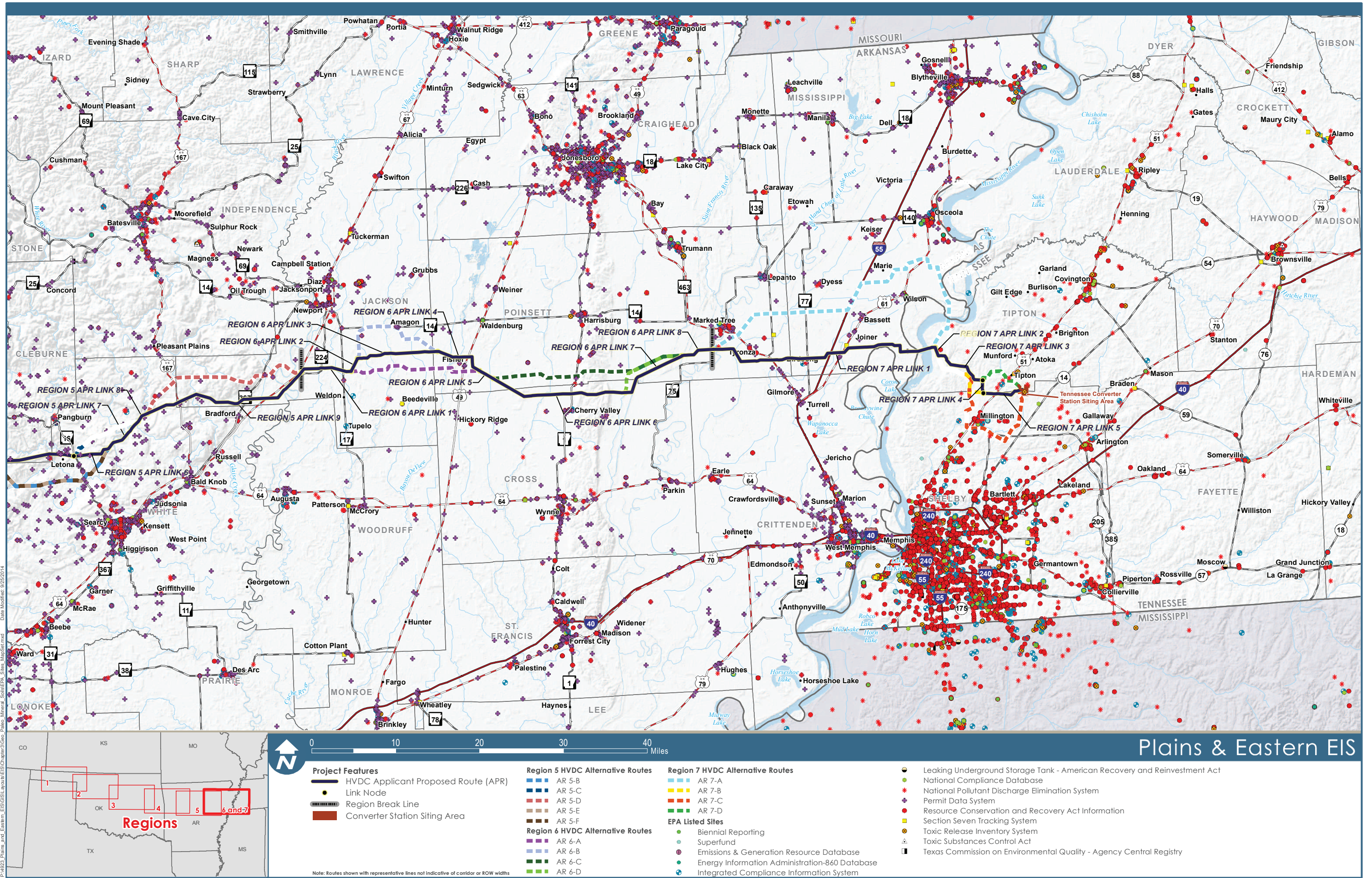
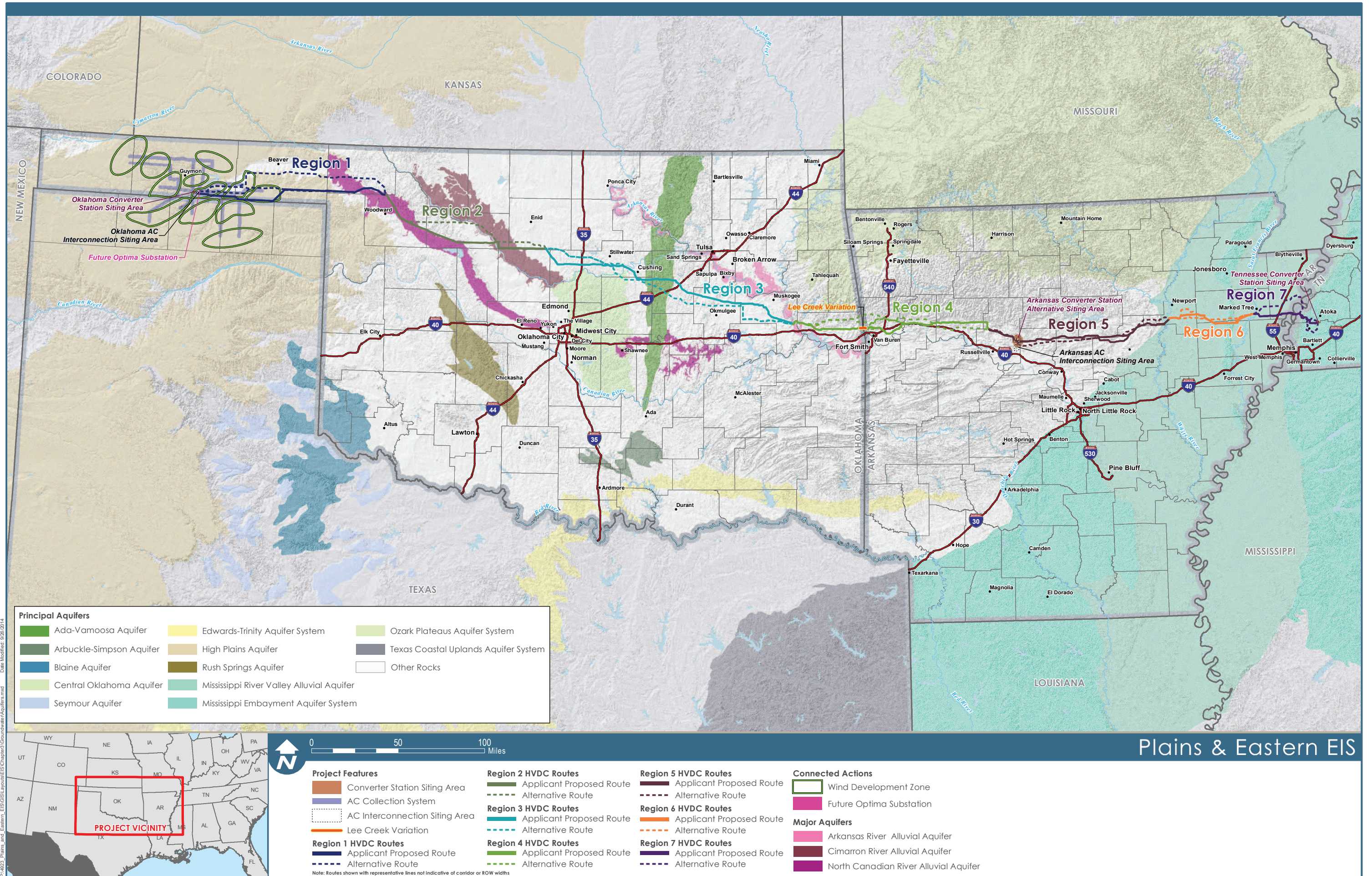


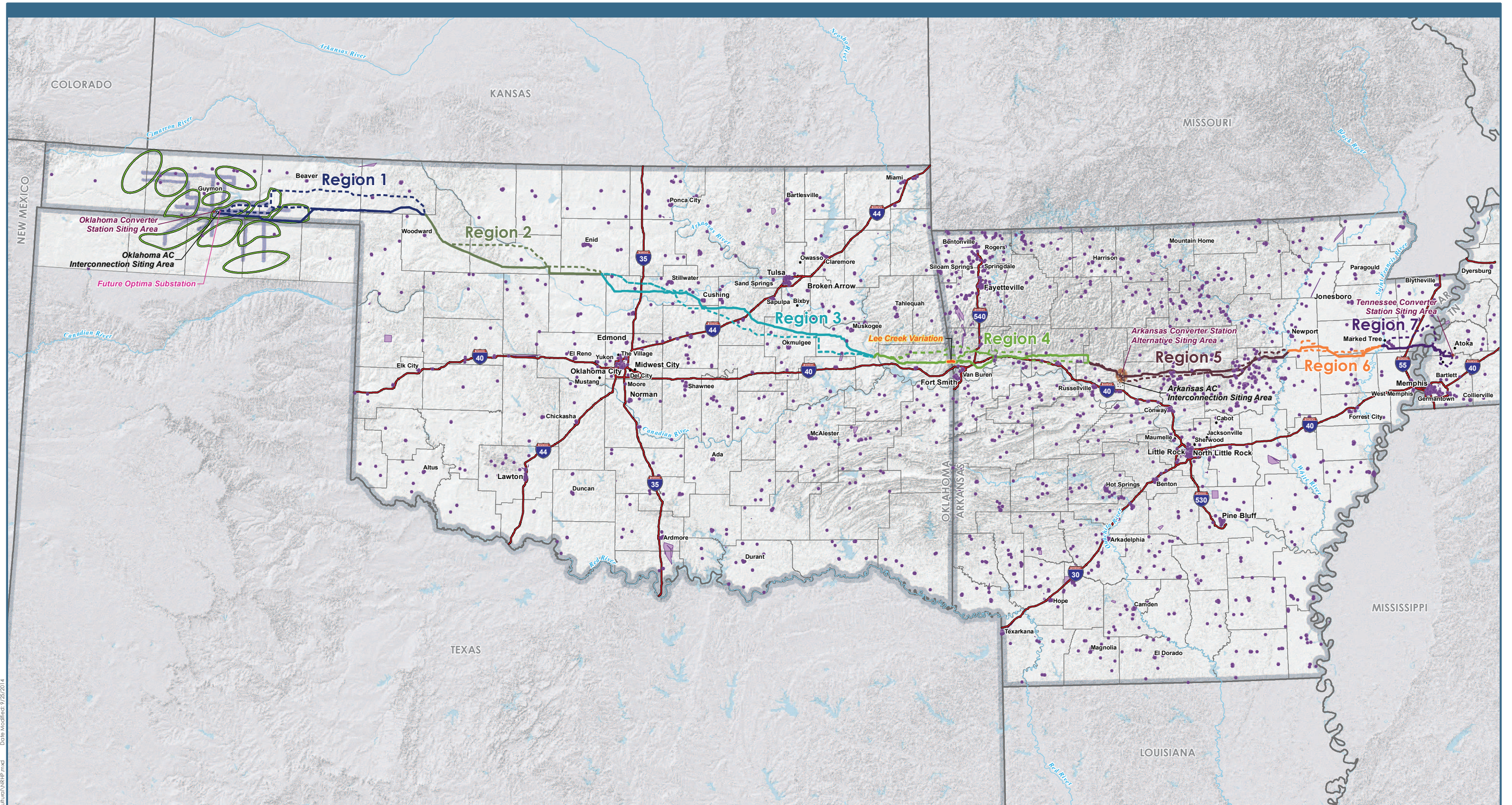
Figure 3.6-10f: EPA Sites in Regions 6 & 7



P:\4823_Plains_and_Eastern_EIS\GIS\Layouts\EIS_Chapter3_Groundwater\Aquifers.mxd
 Date Modified: 9/26/2014

Data Sources: Major Aquifers (OWRB 2011a)

Figure 3.7-1: Major and Principal Aquifers



P:\4923_Plains_and_Eastern_EIS\GIS\Layout\ES\Chapter3\Cultural\NHP.mxd Date Modified: 9/25/2014



0 50 100 Miles

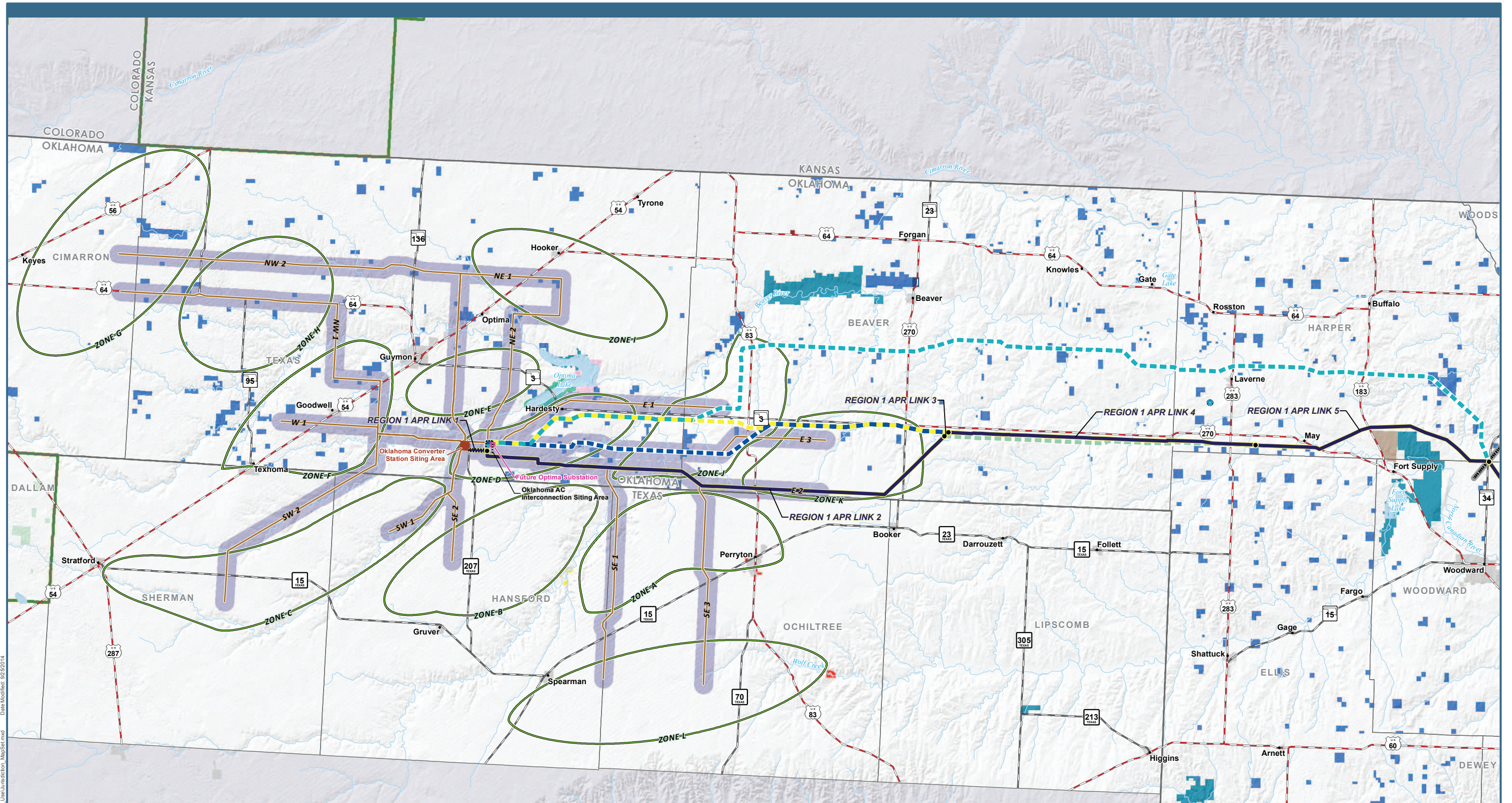
Plains & Eastern EIS

<p>Project Features</p> <ul style="list-style-type: none"> Converter Station Siting Area AC Collection System AC Interconnection Siting Area Lee Creek Variation <p>Region 1 HVDC Routes</p> <ul style="list-style-type: none"> Applicant Proposed Route Alternative Route 	<p>Region 2 HVDC Routes</p> <ul style="list-style-type: none"> Applicant Proposed Route Alternative Route <p>Region 3 HVDC Routes</p> <ul style="list-style-type: none"> Applicant Proposed Route Alternative Route <p>Region 4 HVDC Routes</p> <ul style="list-style-type: none"> Applicant Proposed Route Alternative Route 	<p>Region 5 HVDC Routes</p> <ul style="list-style-type: none"> Applicant Proposed Route Alternative Route <p>Region 6 HVDC Routes</p> <ul style="list-style-type: none"> Applicant Proposed Route Alternative Route <p>Region 7 HVDC Routes</p> <ul style="list-style-type: none"> Applicant Proposed Route Alternative Route 	<p>Connected Actions</p> <ul style="list-style-type: none"> Wind Development Zone Future Optima Substation <p>National Register of Historic Places</p> <ul style="list-style-type: none"> NRHP Point NRHP Polygon
--	---	---	--

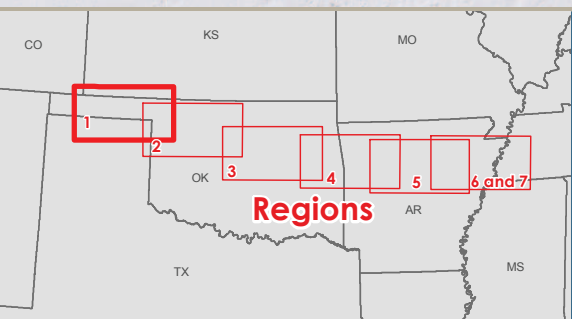
Note: Routes shown with representative lines not indicative of corridor or ROW widths

Data Sources: National Register of Historic Places (Stutts 2014)

Figure 3.9-1: National Register of Historic Places



P:\4023_Plains_and_Eastern_EIS\GIS\Layout\EIS\Chapter3\Land_Use\Jurisdiction_MapSet.mxd Date Modified: 02/20/2014

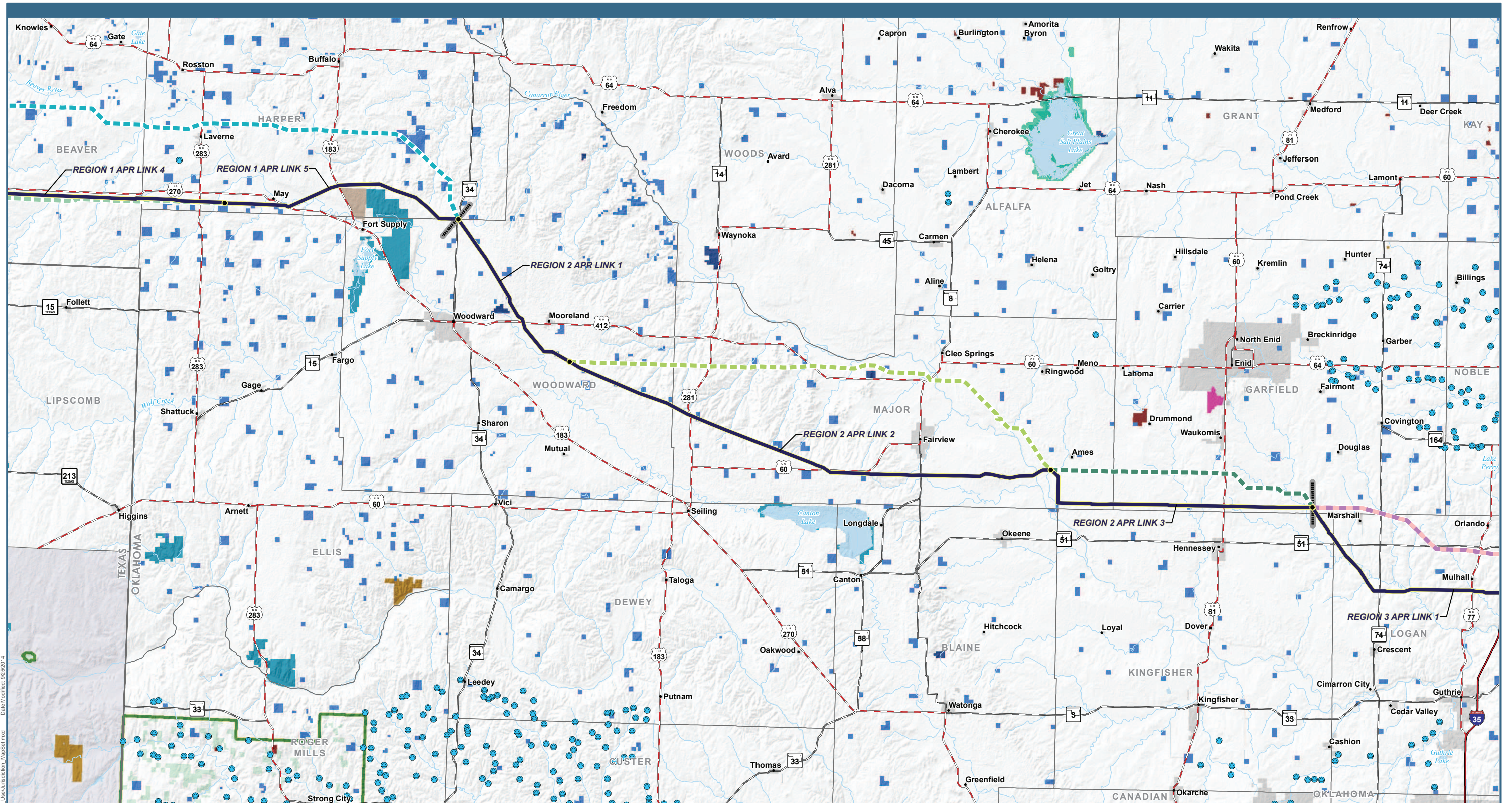


Plains & Eastern EIS

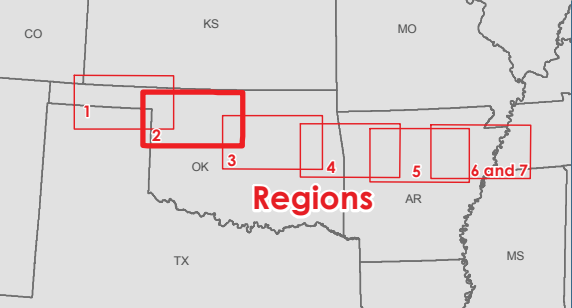
<p>Project Features</p> <ul style="list-style-type: none"> — HVDC Applicant Proposed Route (APR) ● Link Node Region Break Line Converter Station Siting Area AC Collection System AC Collection System Route Centerline AC Interconnection Siting Area 	<p>Region 1 HVDC Alternative Routes</p> <ul style="list-style-type: none"> AR 1-A AR 1-B AR 1-C AR 1-D <p>Connected Actions</p> <ul style="list-style-type: none"> Wind Development Zone Future Optima Substation 	<p>USDA Dams</p> <ul style="list-style-type: none"> ● Dam <p>Jurisdiction</p> <ul style="list-style-type: none"> U.S. Army Corps of Engineers City/County/Local Park Public Use Area State State Park State School Lands 	<ul style="list-style-type: none"> USDA Wildlife Management Area (WMA) USFWS Approved Acquisition Area USFWS-owned Land USFS Administrative Forest Boundary USFS-owned Land National Conservation Easement Database Municipal Boundary
---	--	--	---

Note: Routes shown with representative lines not indicative of corridor or ROW widths

Figure 3.10-1a: Jurisdiction in Region 1



P:\4023_Plains_and_Eastern_EIS\GIS\Layout\EIS\Chapter3\Land_Use\Jurisdiction_MapSet.mxd Date Modified: 02/22/2014



- Project Features**
- HVDC Applicant Proposed Route (APR)
 - Link Node
 - Region Break Line

- Region 1 HVDC Alternative Routes**
- AR 1-A
 - AR 1-D
- Region 2 HVDC Alternative Routes**
- AR 2-A
 - AR 2-B
- Region 3 HVDC Alternative Routes**
- AR 3-A
 - AR 3-B

- USDA Dams**
- Dam
- Jurisdiction**
- U.S. Army Corps of Engineers
 - U.S. Department of Defense
 - State
 - State Park
 - State School Lands
 - USDA

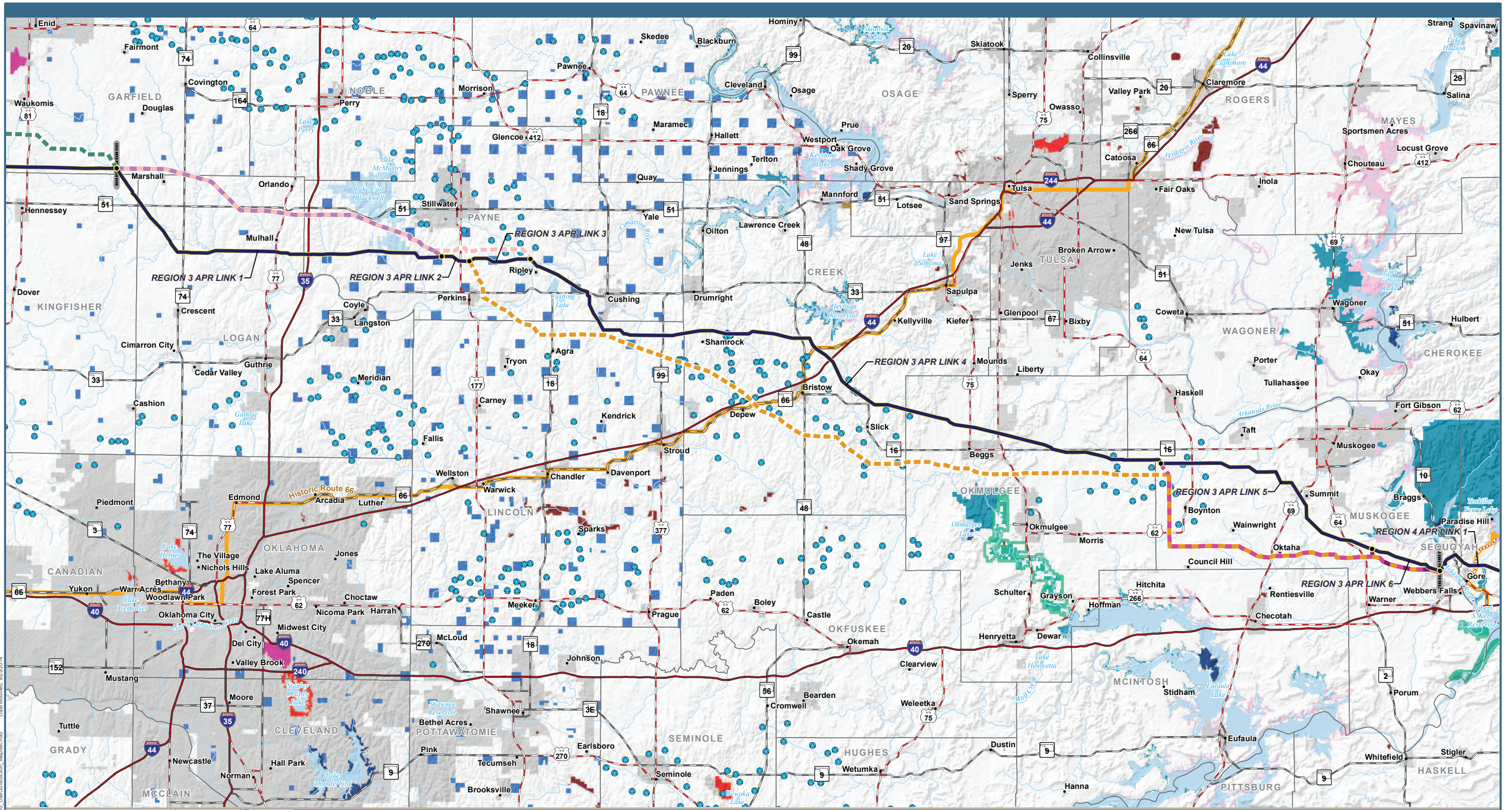
- Wildlife Management Area (WMA)
- USFWS Approved Acquisition Area
- USFWS-owned Land
- USFS Administrative Forest Boundary
- USFS-owned Land
- The Nature Conservancy
- National Conservation Easement Database
- Municipal Boundary

Note: Routes shown with representative lines not indicative of corridor or ROW widths

Data Sources: USDA Dams (NRCS 2005); Historic Trails (NPS 2013); Scenic Byways and Highways (FHWA 2013, Clean Line 2013f); Wild and Scenic Rivers (IWSRCC 1999); Jurisdiction (TPWD 2012, OSU 2013, AHTD 2006c, AGFC 2014, TWRA 2007); USFWS Approved Acquisition Area (USFWS 2014c); USFWS-owned Land (USFWS 2014d); USFS Administrative Forest Boundary (USFS 2014a); USFS-owned Land (USFS 2014c); Wilderness Area (USFS 2014b); The Nature Conservancy (TNC 2013); National Conservation Easement Database (NCED 2014); Municipal Boundaries (TXDOT 2014, CSA 2014, AHTD 2006b, TNGIS 2014b)

Plains & Eastern EIS

Figure 3.10-1b: Jurisdiction in Region 2



P:\4203 Plains and Eastern EIS\GIS\Layout\EIS\Chapter3\Land_Use\Jurisdiction_MapSet.mxd
 Date Modified: 02/20/14



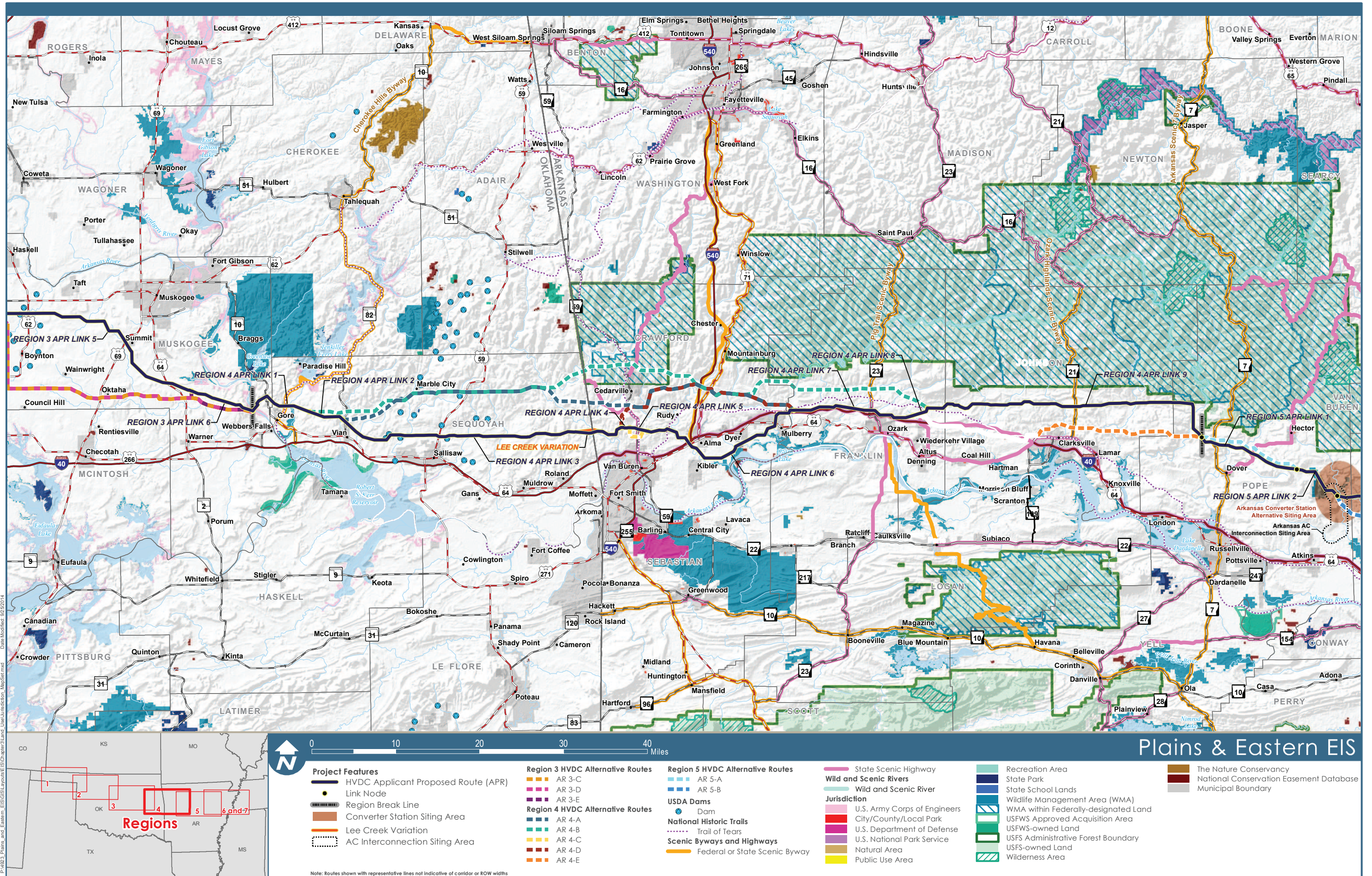
Project Features HVDC Applicant Proposed Route (APR) Link Node Region Break Line		Region 2 HVDC Alternative Routes AR 2-B Region 3 HVDC Alternative Routes AR 3-A AR 3-B AR 3-C AR 3-D AR 3-E	USDA Dams Dam National Historic Trails Trail of Tears Scenic Byways and Highways Federal or State Scenic Byway Jurisdiction U.S. Army Corps of Engineers City/County/Local Park U.S. Department of Defense	State State Park State School Lands Wildlife Management Area (WMA) USFWS Approved Acquisition Area USFWS-owned Land The Nature Conservancy National Conservation Easement Database Municipal Boundary
--	--	--	---	---

Note: Routes shown with representative lines not indicative of corridor or ROW widths

Data Sources: USDA Dams (NRCS 2005); Historic Trails (NPS 2013); Scenic Byways and Highways (FHWA 2013, Clean Line 2013f); Wild and Scenic Rivers (IWSRCC 1999); Jurisdiction (TPWD 2012, OSU 2013, AHTD 2006c, AGFC 2014, TWRA 2007); USFWS Approved Acquisition Area (USFWS 2014c); USFWS-owned Land (USFWS 2014d); USFS Administrative Forest Boundary (USFS 2014a); USFS-owned Land (USFS 2014c); Wilderness Area (USFS 2014b); The Nature Conservancy (TNC 2013); National Conservation Easement Database (NCED 2014); Municipal Boundaries (TXDOT 2014, CSA 2014, AHTD 2006b, TNGIS 2014b)

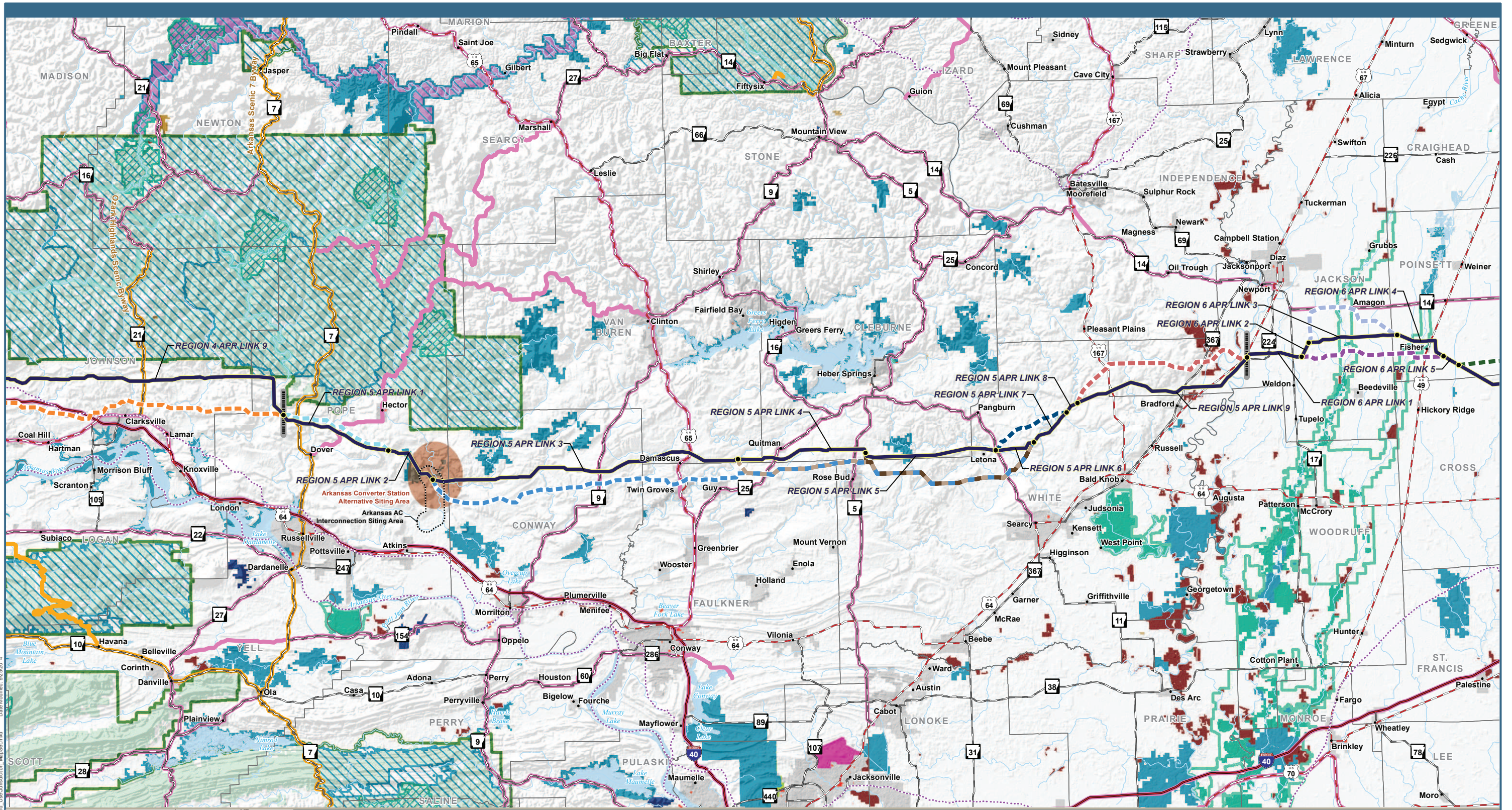
Plains & Eastern EIS

Figure 3.10-1c: Jurisdiction in Region 3

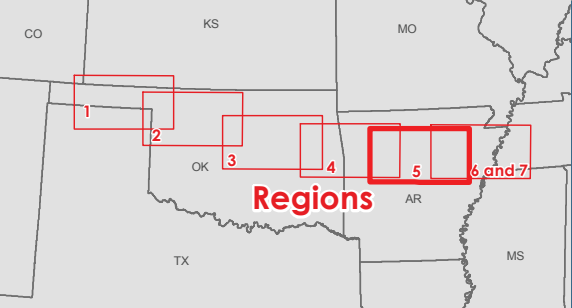


Data Sources: USDA Dams (NRCS 2005); Historic Trails (NPS 2013); Scenic Byways and Highways (FHWA 2013, Clean Line 2013f); Wild and Scenic Rivers (IWSRCC 1999); Jurisdiction (TPWD 2012, OSU 2013, AHTD 2006c, AGFC 2014, TWRA 2007); USFWS Approved Acquisition Area (USFWS 2014c); USFWS-owned Land (USFWS 2014d); USFS Administrative Forest Boundary (USFS 2014a); USFS-owned Land (USFS 2014c); Wilderness Area (USFS 2014b); The Nature Conservancy (TNC 2013); National Conservation Easement Database (NCED 2014); Municipal Boundaries (TXDOT 2014, CSA 2014, AHTD 2006b, TNGIS 2014b)

Figure 3.10-1d: Jurisdiction in Region 4



P:\4203_Plains and Eastern EIS\GIS\Layout\EIS\Chapter3\Land_Use\Jurisdiction_MapSet.mxd
 Date Modified: 02/20/2014

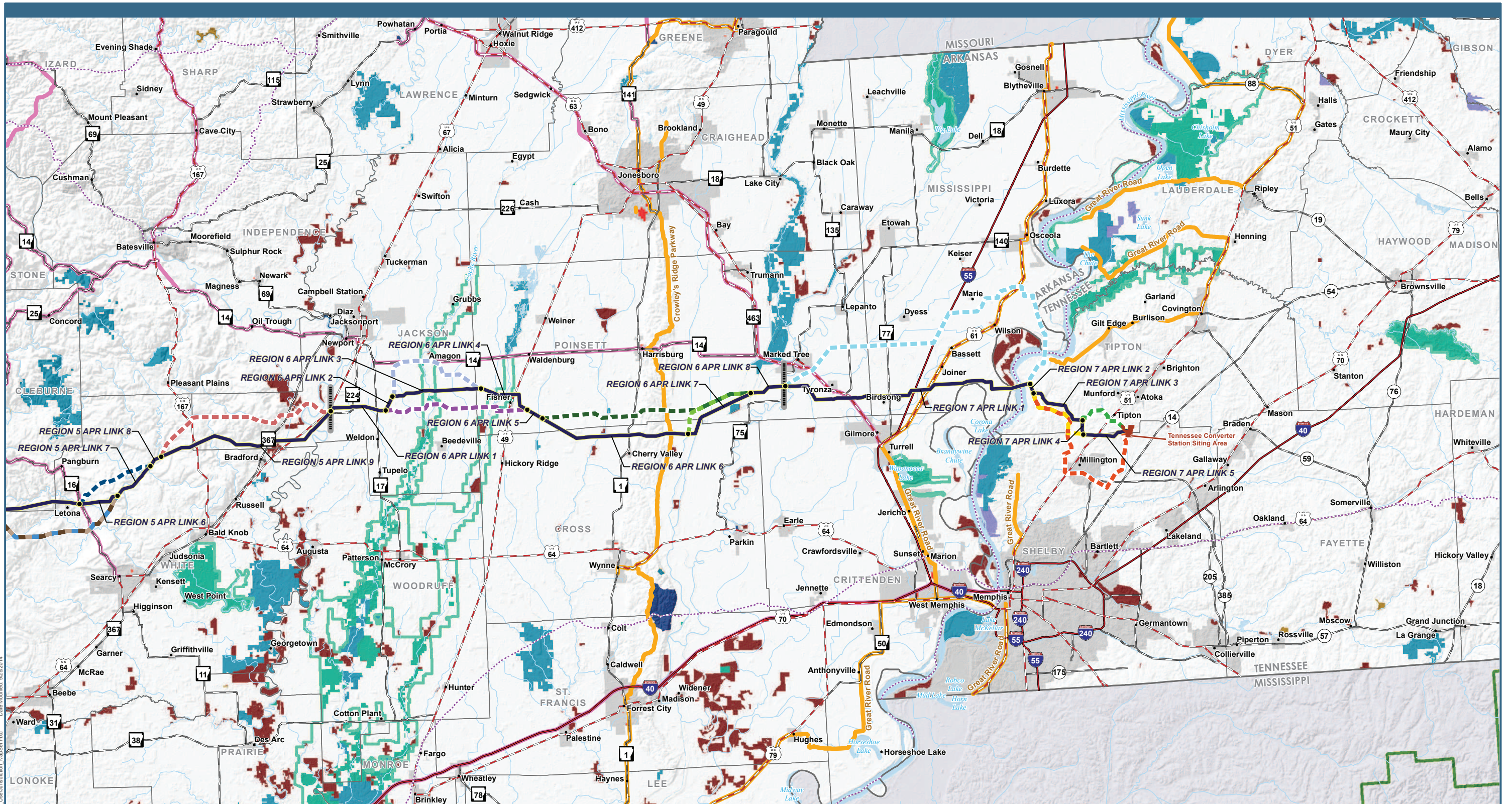


<p>Project Features</p> <ul style="list-style-type: none"> — HVDC Applicant Proposed Route (APR) ● Link Node Region Break Line Converter Station Siting Area AC Interconnection Siting Area 	<p>Region 4 HVDC Alternative Routes</p> <ul style="list-style-type: none"> — AR 4-E <p>Region 5 HVDC Alternative Routes</p> <ul style="list-style-type: none"> — AR 5-A — AR 5-B — AR 5-C — AR 5-D — AR 5-E — AR 5-F <p>Region 6 HVDC Alternative Routes</p> <ul style="list-style-type: none"> — AR 6-A — AR 6-B — AR 6-C 	<p>National Historic Trails</p> <ul style="list-style-type: none"> — Trail of Tears <p>Scenic Byways and Highways</p> <ul style="list-style-type: none"> — Federal or State Scenic Byway — State Scenic Highway <p>Wild and Scenic Rivers</p> <ul style="list-style-type: none"> — Wild and Scenic River 	<p>Jurisdiction</p> <ul style="list-style-type: none"> ■ Arkansas National Guard ■ City/County/Local Park ■ U.S. Department of Defense ■ U.S. National Park Service ■ Natural Area ■ Public Use Area ■ Recreation Area ■ State Park ■ Wildlife Management Area (WMA) ■ WMA within Federally-designated Land 	<ul style="list-style-type: none"> ■ USFWS Approved Acquisition Area ■ USFWS-owned Land USFS Administrative Forest Boundary ■ USFS-owned Land ■ Wilderness Area ■ The Nature Conservancy ■ National Conservation Easement Database ■ Municipal Boundary
---	--	--	--	---

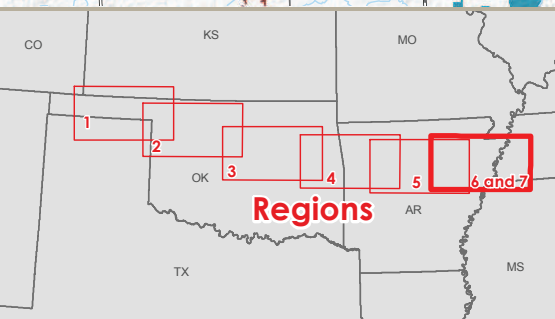
Plains & Eastern EIS

Data Sources: USDA Dams (NRCS 2005); Historic Trails (NPS 2013); Scenic Byways and Highways (FHWA 2013, Clean Line 2013f); Wild and Scenic Rivers (IWSRCC 1999); Jurisdiction (TPWD 2012, OSU 2013, AHTD 2006c, AGFC 2014, TWRA 2007); USFWS Approved Acquisition Area (USFWS 2014c); USFWS-owned Land (USFWS 2014d); USFS Administrative Forest Boundary (USFS 2014a); USFS-owned Land (USFS 2014c); Wilderness Area (USFS 2014b); The Nature Conservancy (TNC 2013); National Conservation Easement Database (NCED 2014); Municipal Boundaries (TXDOT 2014, CSA 2014, AHTD 2006b, TNGIS 2014b)

Figure 3.10-1e: Jurisdiction in Region 5



P:\4203_Plains and Eastern_EIS\GIS\Layout\EIS\Chapter3\Land_Use\Jurisdiction_Map_Settl.mxd
 Date Modified: 02/20/2014



<p>Project Features</p> <ul style="list-style-type: none"> — HVDC Applicant Proposed Route (APR) ● Link Node --- Region Break Line ■ Converter Station Siting Area 	<p>Region 5 HVDC Alternative Routes</p> <ul style="list-style-type: none"> ■ AR 5-B ■ AR 5-C ■ AR 5-D ■ AR 5-E ■ AR 5-F <p>Region 6 HVDC Alternative Routes</p> <ul style="list-style-type: none"> ■ AR 6-A ■ AR 6-B ■ AR 6-C 	<p>Region 7 HVDC Alternative Routes</p> <ul style="list-style-type: none"> ■ AR 7-A ■ AR 7-B ■ AR 7-C ■ AR 7-D <p>National Historic Trails</p> <ul style="list-style-type: none"> --- Trail of Tears 	<p>Scenic Byways and Highways</p> <ul style="list-style-type: none"> — Federal or State Scenic Byway — State Scenic Highway <p>Jurisdiction</p> <ul style="list-style-type: none"> ■ City/County/Local Park ■ Natural Area ■ State ■ State Park ■ State Wildlife Refuge 	<ul style="list-style-type: none"> ■ Wildlife Management Area (WMA) ■ USFWS Approved Acquisition Area ■ USFWS-owned Land ■ USFS Administrative Forest Boundary ■ The Nature Conservancy ■ National Conservation Easement Database ■ Municipal Boundary
--	---	---	---	--

Note: Routes shown with representative lines not indicative of corridor or ROW widths

Data Sources: USDA Dams (NRCS 2005); Historic Trails (NPS 2013); Scenic Byways and Highways (FHWA 2013, Clean Line 2013f); Wild and Scenic Rivers (IWSRCC 1999); Jurisdiction (TPWD 2012, OSU 2013, AHTD 2006c, AGFC 2014, TWRA 2007); USFWS Approved Acquisition Area (USFWS 2014c); USFWS-owned Land (USFWS 2014d); USFS Administrative Forest Boundary (USFS 2014a); USFS-owned Land (USFS 2014c); Wilderness Area (USFS 2014b); The Nature Conservancy (TNC 2013); National Conservation Easement Database (NCED 2014); Municipal Boundaries (TXDOT 2014, CSA 2014, AHTD 2006b, TNGIS 2014b)

Plains & Eastern EIS

Figure 3.10-1f: Jurisdiction in Regions 6 & 7

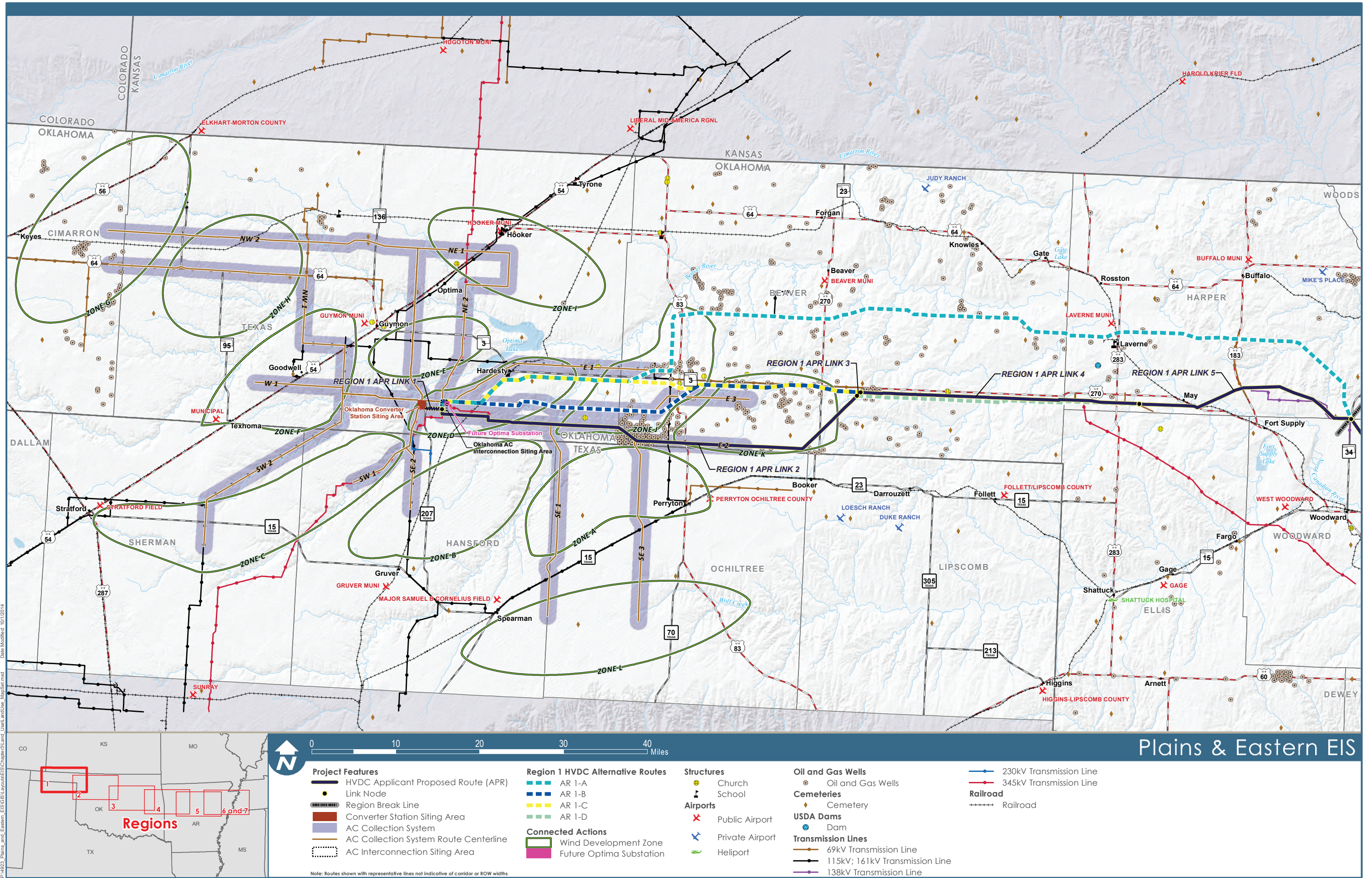
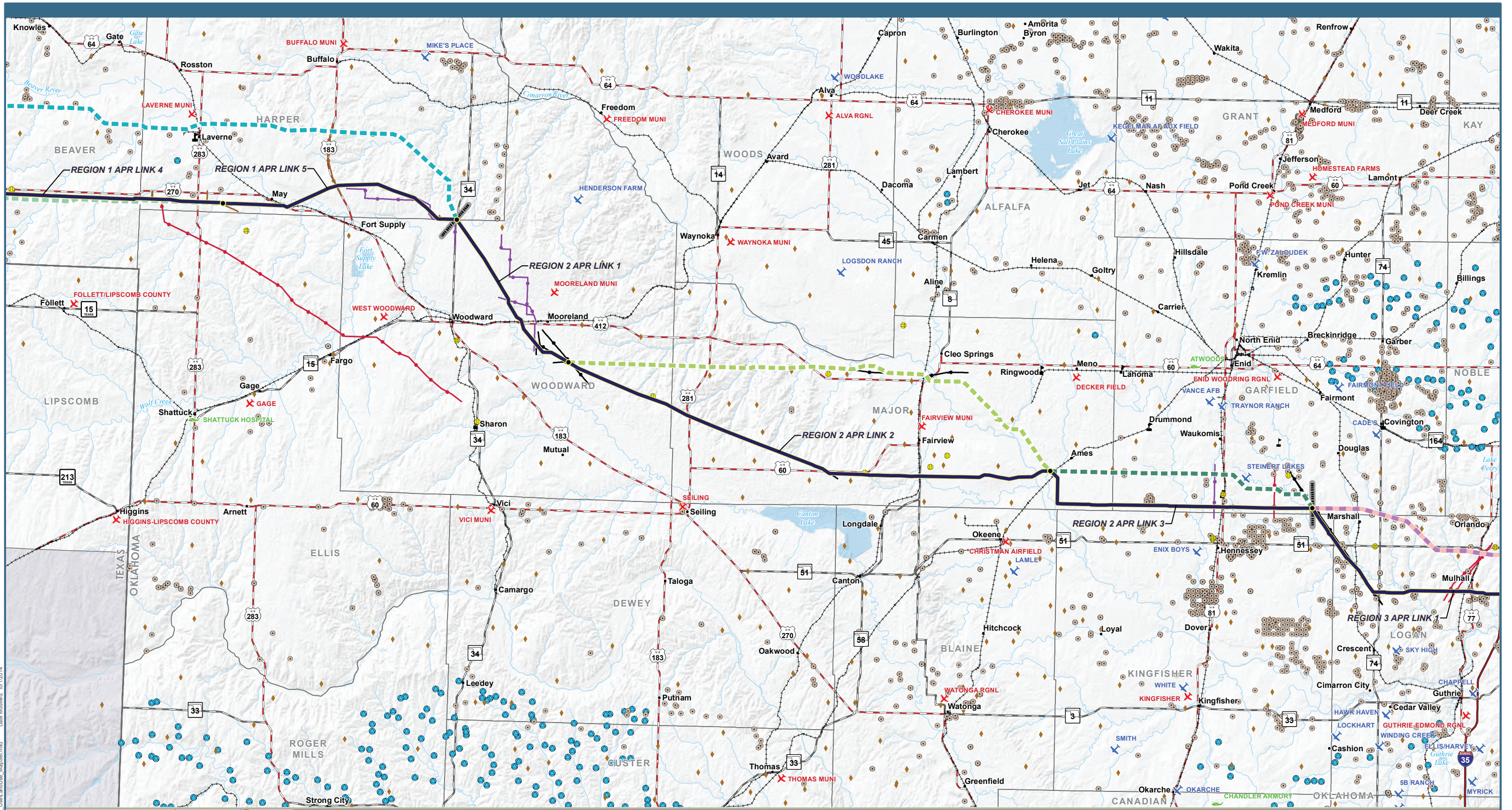
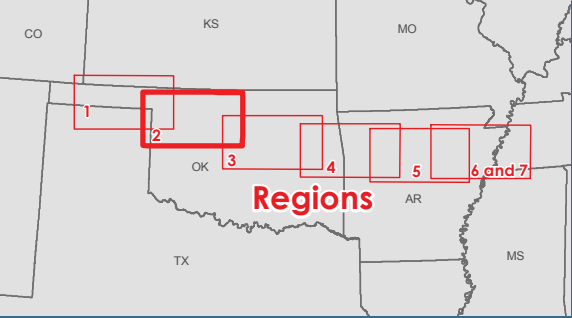


Figure 3.10-2a: Existing Structures and Infrastructure in Region 1



P:\4823_Plains_and_Eastern_EIS\GIS\Layouts\EIS\Chapter3\Land_Use_Map_Summary.mxd Date Modified: 10/12/2014



- Project Features**
- HVDC Applicant Proposed Route (APR)
 - Link Node
 - Region Break Line

- Region 1 HVDC Alternative Routes**
- AR 1-A
 - AR 1-D
- Region 2 HVDC Alternative Routes**
- AR 2-A
 - AR 2-B
- Region 3 HVDC Alternative Routes**
- AR 3-A
 - AR 3-B

- Structures**
- Church
 - School
- Airports**
- ✕ Public Airport
 - ✕ Private Airport
 - ✕ Heliport

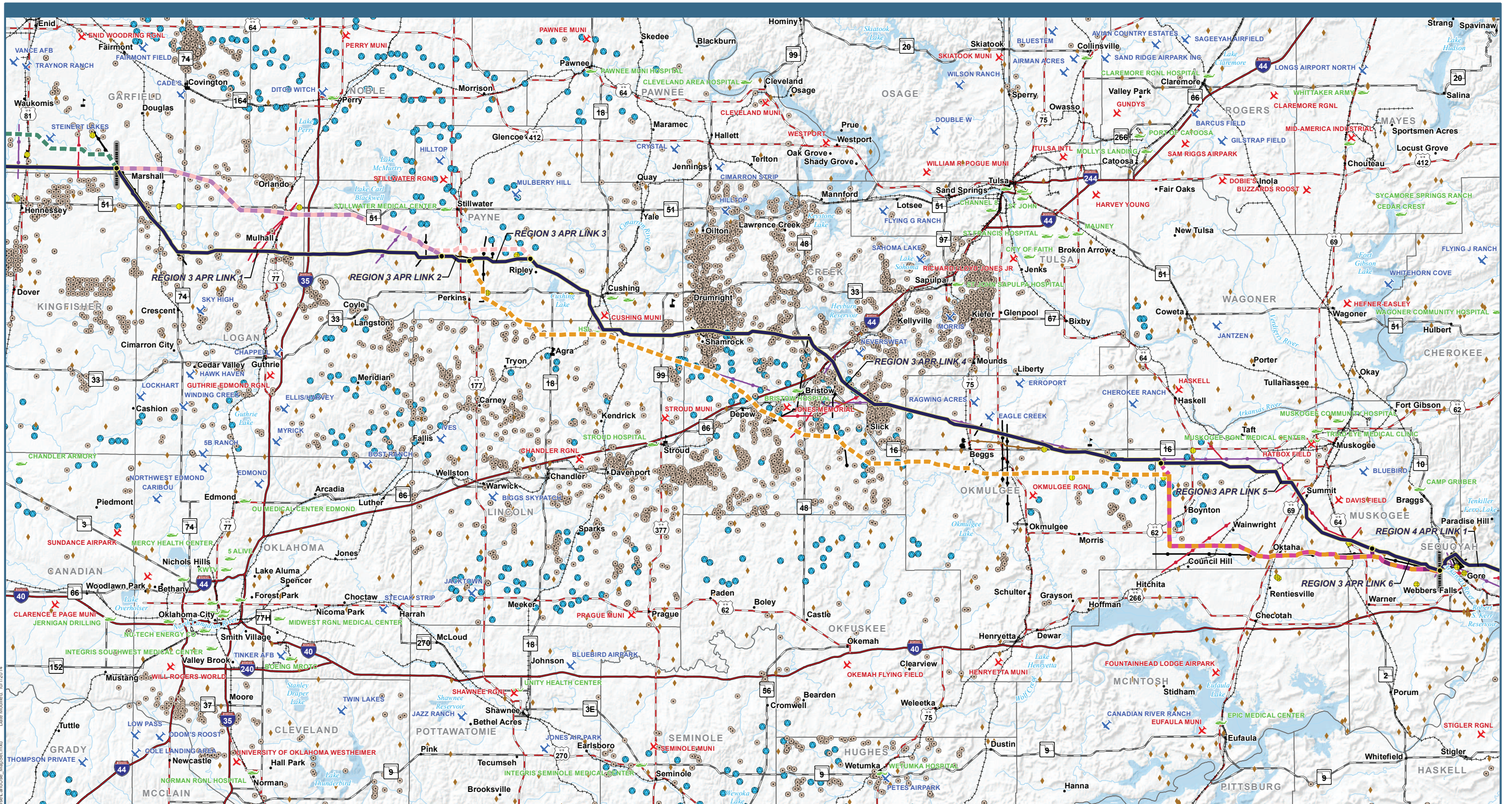
- Oil and Gas Wells**
- Oil and Gas Wells
- Cemeteries**
- Cemetery
- USDA Dams**
- Dam
- Transmission Lines**
- 69kV Transmission Line
 - 115kV; 161kV Transmission Line
 - 138kV Transmission Line

- 345kV Transmission Line
- Railroad
- Railroad

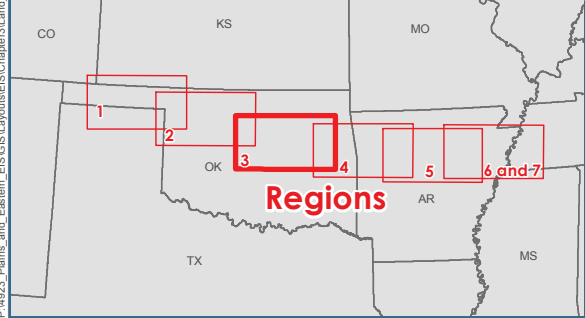
Plains & Eastern EIS

Data Sources: Structures (Clean Line 2013a, Tetra Tech 2014a); Airports (BTS 2013); Oil and Gas Wells (AOGC 2014, OCC 2013); Cemeteries (ESRI 2013); Transmission Lines (Clean Line 2013c); Railroads (BTS 2013); USDA Dams (NRCS 2005)

Figure 3.10-2b: Existing Structures and Infrastructure in Region 2



P:\4823_Plains_and_Eastern_EIS\GIS\Layers\EIS\Chapter3\Land_Use_and_Use_Map_Sat.mxd
 Date Modified: 10/12/2014



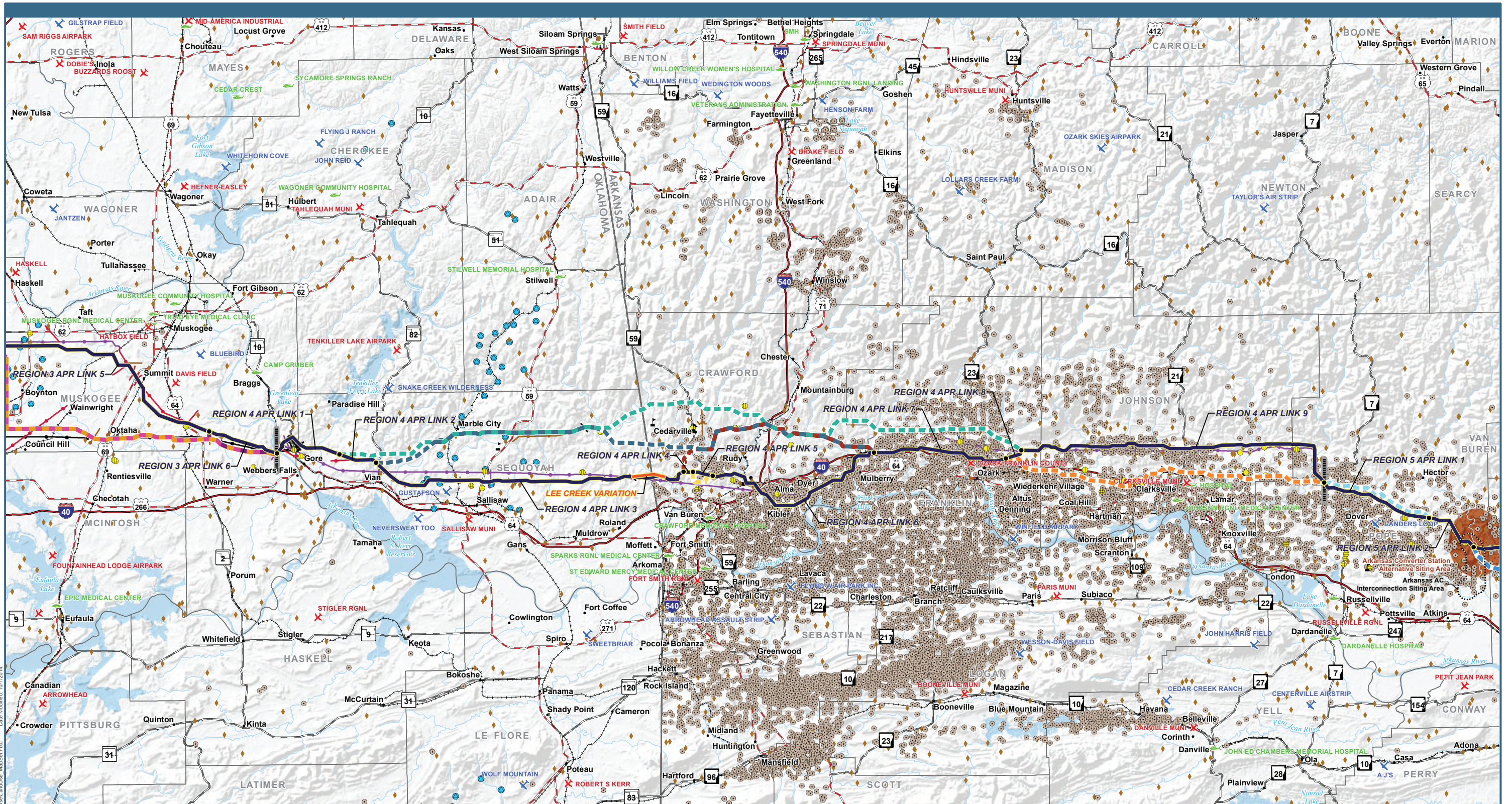
<p>Project Features</p> <ul style="list-style-type: none"> — HVDC Applicant Proposed Route (APR) ● Link Node --- Region Break Line 	<p>Region 2 HVDC Alternative Routes</p> <ul style="list-style-type: none"> — AR 2-B <p>Region 3 HVDC Alternative Routes</p> <ul style="list-style-type: none"> — AR 3-A — AR 3-B — AR 3-C — AR 3-D — AR 3-E 	<p>Structures</p> <ul style="list-style-type: none"> ● Church ● School <p>Airports</p> <ul style="list-style-type: none"> ✕ Public Airport ✕ Private Airport ✕ Heliport 	<p>Oil and Gas Wells</p> <ul style="list-style-type: none"> ● Oil and Gas Wells <p>Cemeteries</p> <ul style="list-style-type: none"> ♦ Cemetery <p>USDA Dams</p> <ul style="list-style-type: none"> ● Dam <p>Transmission Lines</p> <ul style="list-style-type: none"> — 69kV Transmission Line — 115kV; 161kV Transmission Line — 138kV Transmission Line 	<p>— 345kV Transmission Line</p> <p>Railroad</p> <ul style="list-style-type: none"> —+—+— Railroad
---	---	---	---	--

Note: Routes shown with representative lines not indicative of corridor or ROW widths

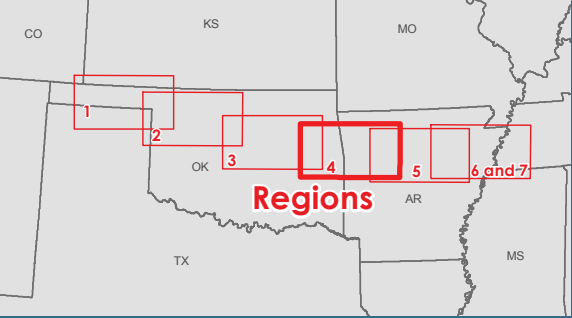
Plains & Eastern EIS

Data Sources: Structures (Clean Line 2013a, Tetra Tech 2014a); Airports (BTS 2013); Oil and Gas Wells (AOGC 2014, OCC 2013); Cemeteries (ESRI 2013); Transmission Lines (Clean Line 2013c); Railroads (BTS 2013); USDA Dams (NRCS 2005)

Figure 3.10-2c: Existing Structures and Infrastructure in Region 3



P:\4823_Plains_and_Eastern_EIS\GIS\Layouts\EIS\Chapter3\Land_Use_and_Infrastructure_Map_Series.mxd
 Date Modified: 10/12/2014



0 10 20 30 40 Miles

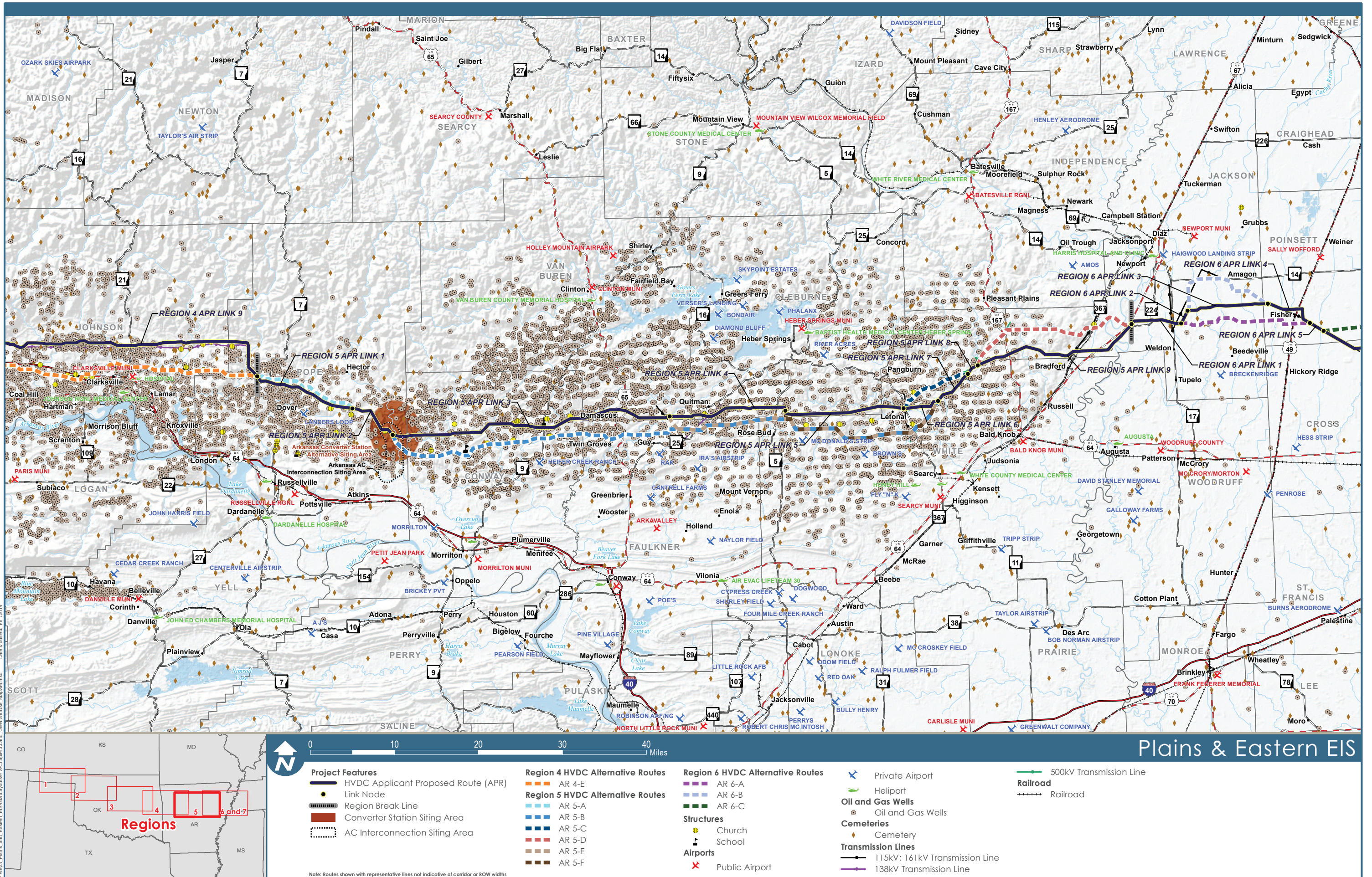
Plains & Eastern EIS

<p>Project Features</p> <ul style="list-style-type: none"> — HVDC Applicant Proposed Route (APR) ● Link Node Region Break Line Converter Station Siting Area Lee Creek Variation AC Interconnection Siting Area 	<p>Region 3 HVDC Alternative Routes</p> <ul style="list-style-type: none"> AR 3-C AR 3-D AR 3-E <p>Region 4 HVDC Alternative Routes</p> <ul style="list-style-type: none"> AR 4-A AR 4-B AR 4-C AR 4-D AR 4-E 	<p>Region 5 HVDC Alternative Routes</p> <ul style="list-style-type: none"> AR 5-A AR 5-B <p>Structures</p> <ul style="list-style-type: none"> ⚓ Church 🎓 School <p>Airports</p> <ul style="list-style-type: none"> ✈ Public Airport 	<ul style="list-style-type: none"> ✈ Private Airport ✈ Helipoint ⬮ Oil and Gas Wells ⬮ Cemetery ⬮ Cemetery ⬮ USDA Dams ⬮ Dam <p>Transmission Lines</p> <ul style="list-style-type: none"> — 69kV Transmission Line — 115kV; 161kV Transmission Line — 138kV Transmission Line — 345kV Transmission Line <p>Railroad</p> <ul style="list-style-type: none"> — Railroad
--	--	---	---

Note: Routes shown with representative lines not indicative of corridor or ROW widths

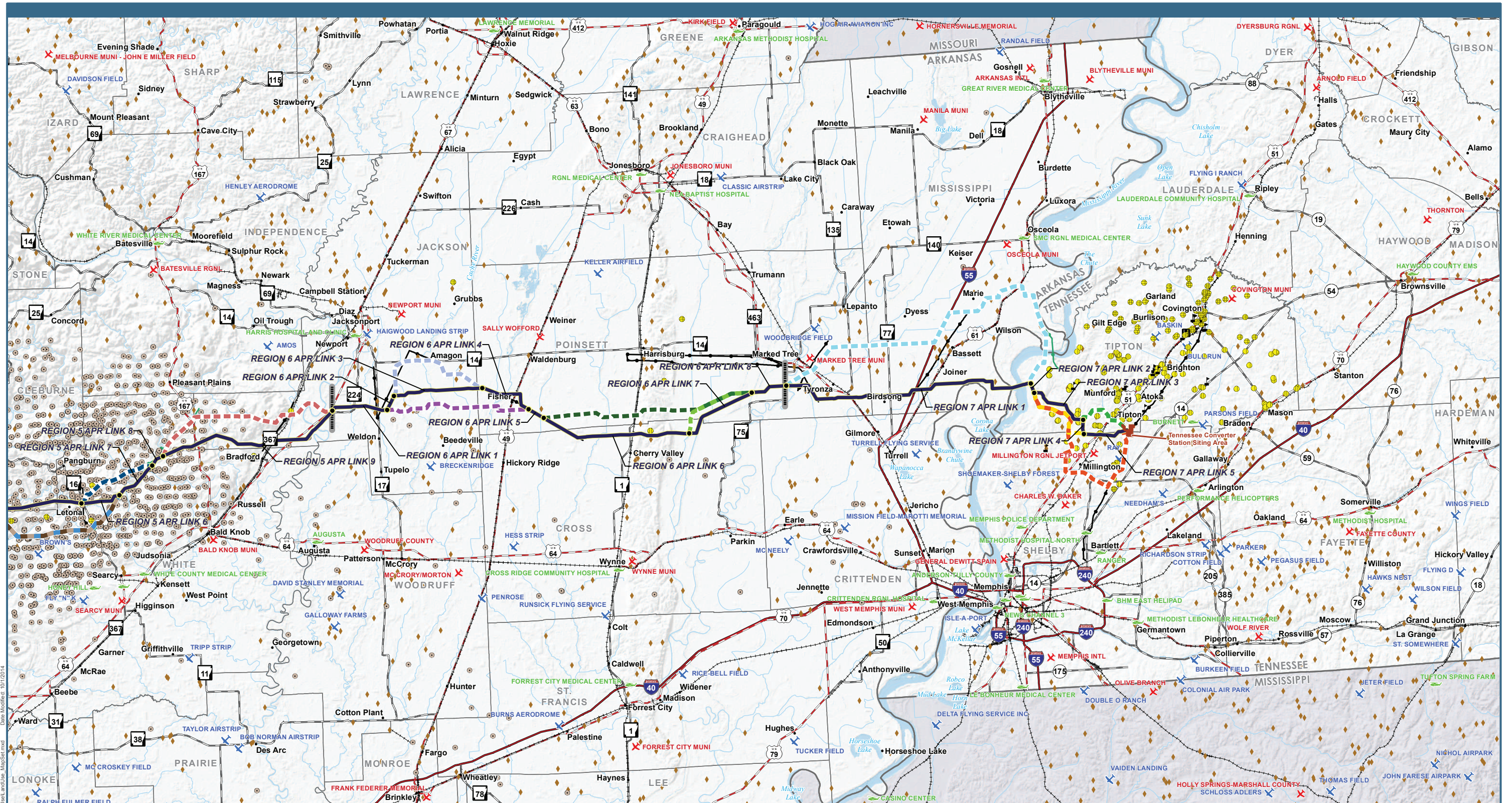
Data Sources: Structures (Clean Line 2013a, Tetra Tech 2014a); Airports (BTS 2013); Oil and Gas Wells (AOGC 2014, OCC 2013); Cemeteries (ESRI 2013); Transmission Lines (Clean Line 2013c); Railroads (BTS 2013); USDA Dams (NRCS 2005)

Figure 3.10-2d: Existing Structures and Infrastructure in Region 4

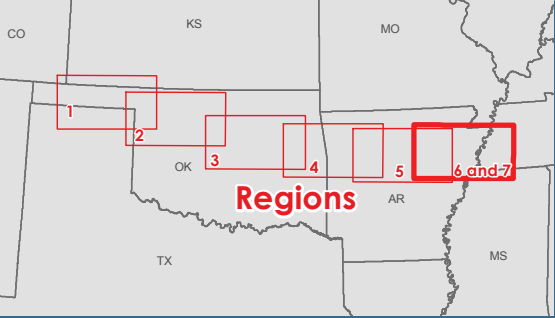


Data Sources: Structures (Clean Line 2013a, Tetra Tech 2014a); Airports (BTS 2013); Oil and Gas Wells (AOGC 2014, OCC 2013); Cemeteries (ESRI 2013); Transmission Lines (Clean Line 2013c); Railroads (BTS 2013); USDA Dams (NRCS 2005)

Figure 3.10-2e: Existing Structures and Infrastructure in Region 5



Date Modified: 10/12/2014
 P:\4823_Plains_and_Eastern_EIS\GIS\Layouts\EIS\Chapter3\Land_Use_and_Infrastructure_Map_Series.mxd



Project Features

- HVDC Applicant Proposed Route (APR)
- Link Node
- Region Break Line
- Converter Station Siting Area

Region 5 HVDC Alternative Routes

- AR 5-B
- AR 5-C
- AR 5-D
- AR 5-E
- AR 5-F

Region 6 HVDC Alternative Routes

- AR 6-A
- AR 6-B
- AR 6-C

Region 7 HVDC Alternative Routes

- AR 7-A
- AR 7-B
- AR 7-C
- AR 7-D

Structures

- Church
- Hospital

School

- ⌘ School

Airports

- ✕ Public Airport
- ✕ Private Airport
- ✕ Helipoint

Oil and Gas Wells

- Oil and Gas Wells

Cemeteries

- Cemetery

Transmission Lines

- 115kV; 161kV Transmission Line
- 500kV Transmission Line

Railroad

- Railroad

Note: Routes shown with representative lines not indicative of corridor or ROW widths

Data Sources: Structures (Clean Line 2013a, Tetra Tech 2014a); Airports (BTS 2013); Oil and Gas Wells (AOGC 2014, OCC 2013); Cemeteries (ESRI 2013); Transmission Lines (Clean Line 2013c); Railroads (BTS 2013); USDA Dams (NRCS 2005)

Figure 3.10-2f: Existing Structures and Infrastructure in Regions 6 & 7