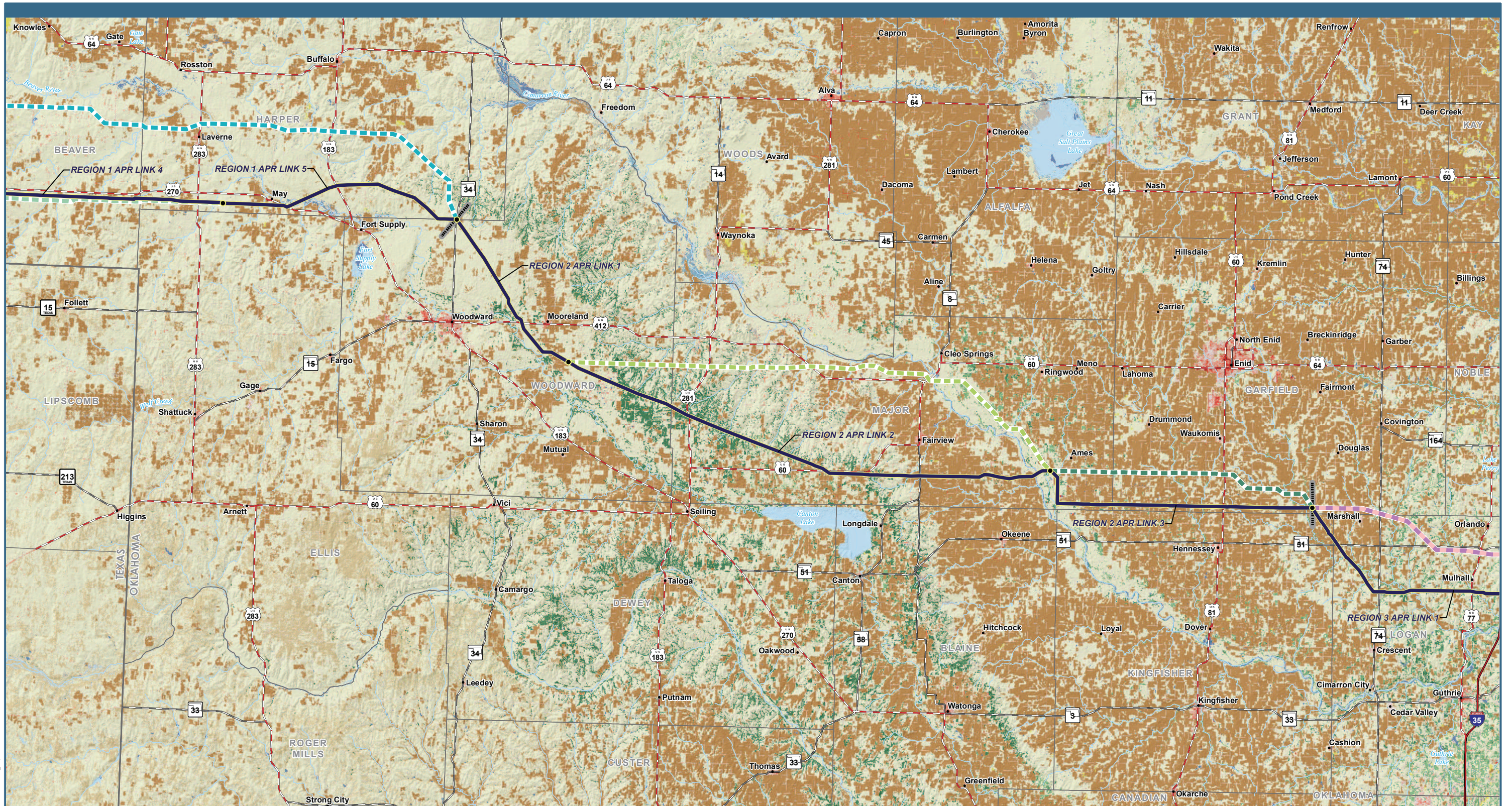


P:\4823_Plains_and_Eastern_EIS\GIS\Layouts\EIS\Chapter3\Land_Use_LandCover_Map_Sk.mxd Date Modified: 9/16/2014

Data Sources: Land Cover (Jin et al 2013)

Figure 3.10-3a: Land Cover in Region 1



P:\4823_Plains_and_Eastern_EIS\GIS\Layouts\EIS\Chapter3\Land_Use_LandCover_Map_Sk.mxd Date Modified: 9/16/2014



- Project Features**
- HVDC Applicant Proposed Route (APR)
 - Link Node
 - Region Break Line

- Region 1 HVDC Alternative Routes**
- AR 1-A
 - - - AR 1-D
- Region 2 HVDC Alternative Routes**
- AR 2-A
 - - - AR 2-B
- Region 3 HVDC Alternative Routes**
- AR 3-A
 - - - AR 3-B

- Land Cover**
- Open Water
 - Developed, Open Space
 - Developed, Low Intensity
 - Developed, Medium Intensity
 - Developed, High Intensity
 - Barren Land
 - Deciduous Forest
 - Evergreen Forest

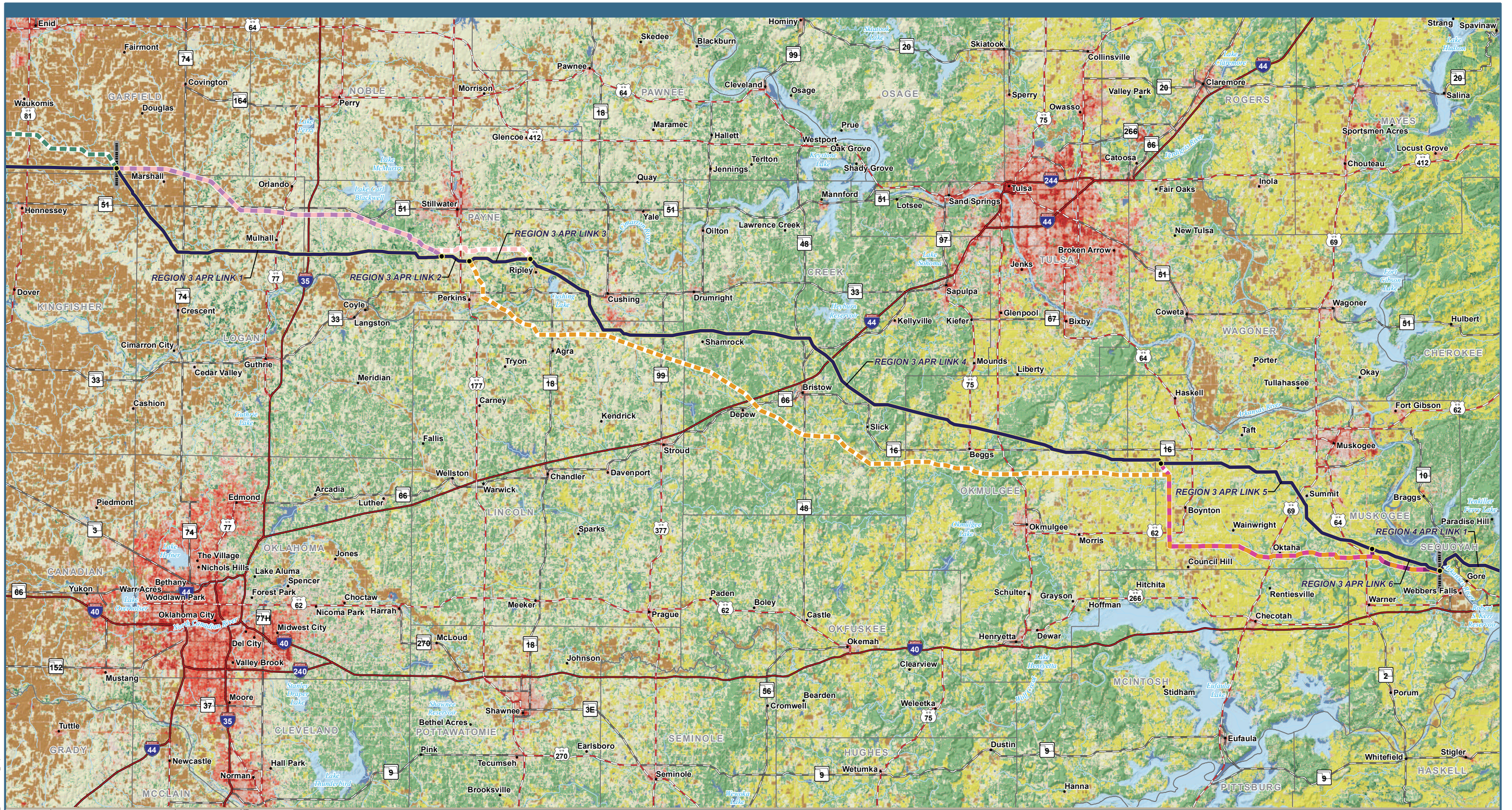
- Mixed Forest
- Shrub/Scrub
- Grassland/Herbaceous
- Pasture/Hay
- Cultivated Crops
- Woody Wetlands
- Emergent Herbaceous Wetlands

Note: Routes shown with representative lines not indicative of corridor or ROW widths

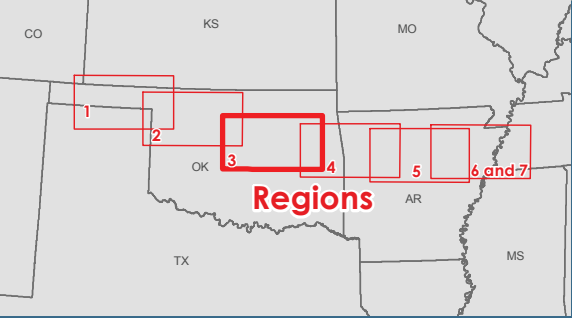
Plains & Eastern EIS

Data Sources: Land Cover (Jin et al 2013)

Figure 3.10-3b: Land Cover in Region 2



P:\4823_Plains_and_Eastern_EIS\GIS\Layouts\EIS\Chapter3\Land_Use_LandCover_Map_Sk.mxd Date Modified: 9/16/2014



Project Features

- HVDC Applicant Proposed Route (APR)
- Link Node
- Region Break Line

Region 2 HVDC Alternative Routes

- AR 2-B

Region 3 HVDC Alternative Routes

- AR 3-A
- AR 3-B
- AR 3-C
- AR 3-D
- AR 3-E

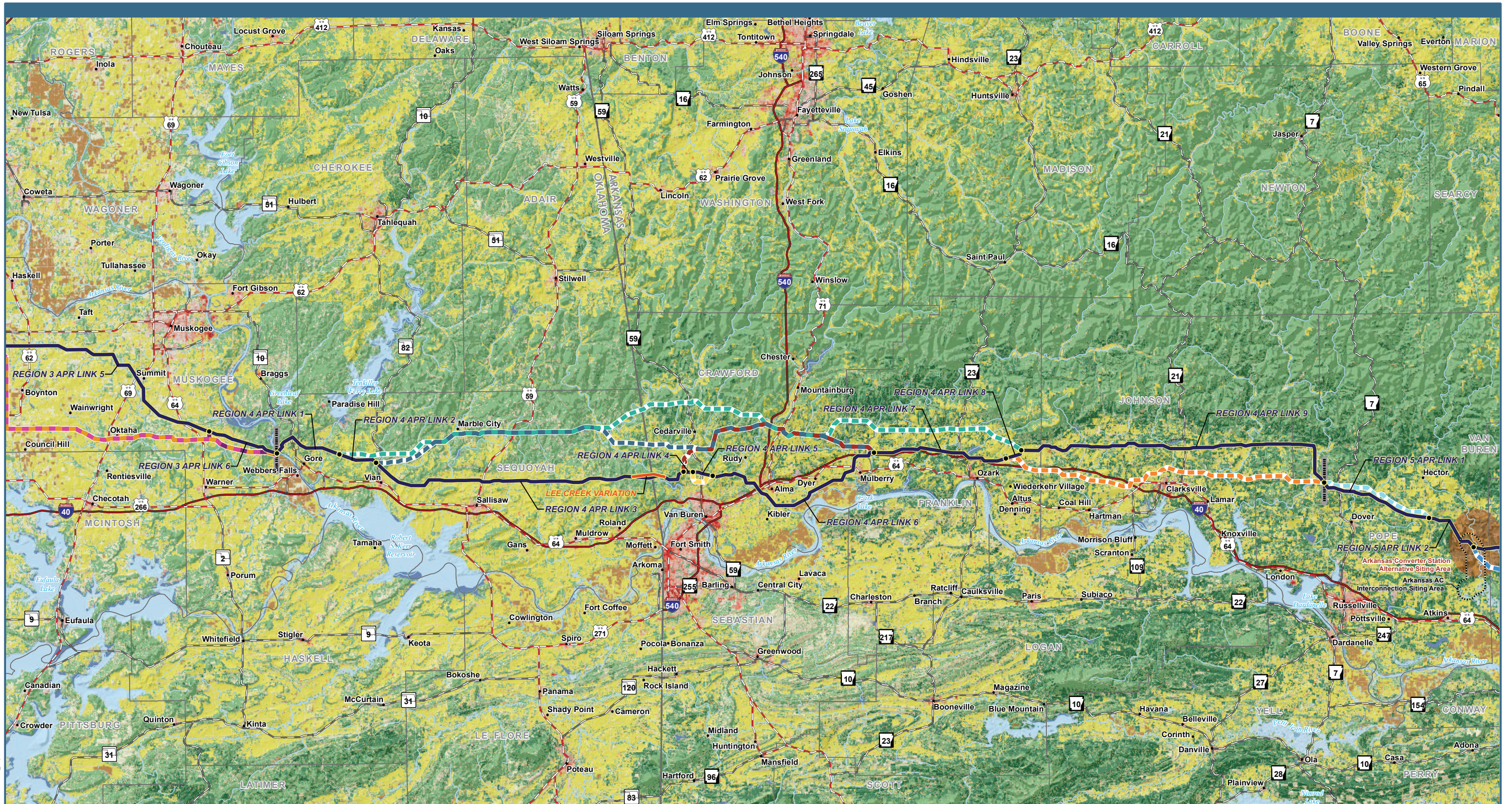
Note: Routes shown with representative lines not indicative of corridor or ROW widths

Land Cover

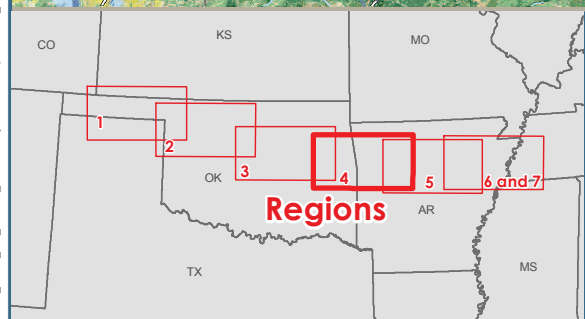
- Open Water
- Developed, Open Space
- Developed, Low Intensity
- Developed, Medium Intensity
- Developed, High Intensity
- Barren Land
- Deciduous Forest
- Evergreen Forest
- Mixed Forest
- Shrub/Scrub
- Grassland/Herbaceous
- Pasture/Hay
- Cultivated Crops
- Woody Wetlands
- Emergent Herbaceous Wetlands

Plains & Eastern EIS

Figure 3.10-3c: Land Cover in Region 3



P:\4823_Plains_and_Eastern_EIS\GIS\Layouts\EIS\Chapter3\Land_Use\andCover_Map_Sk.mxd Date Modified: 9/16/2014

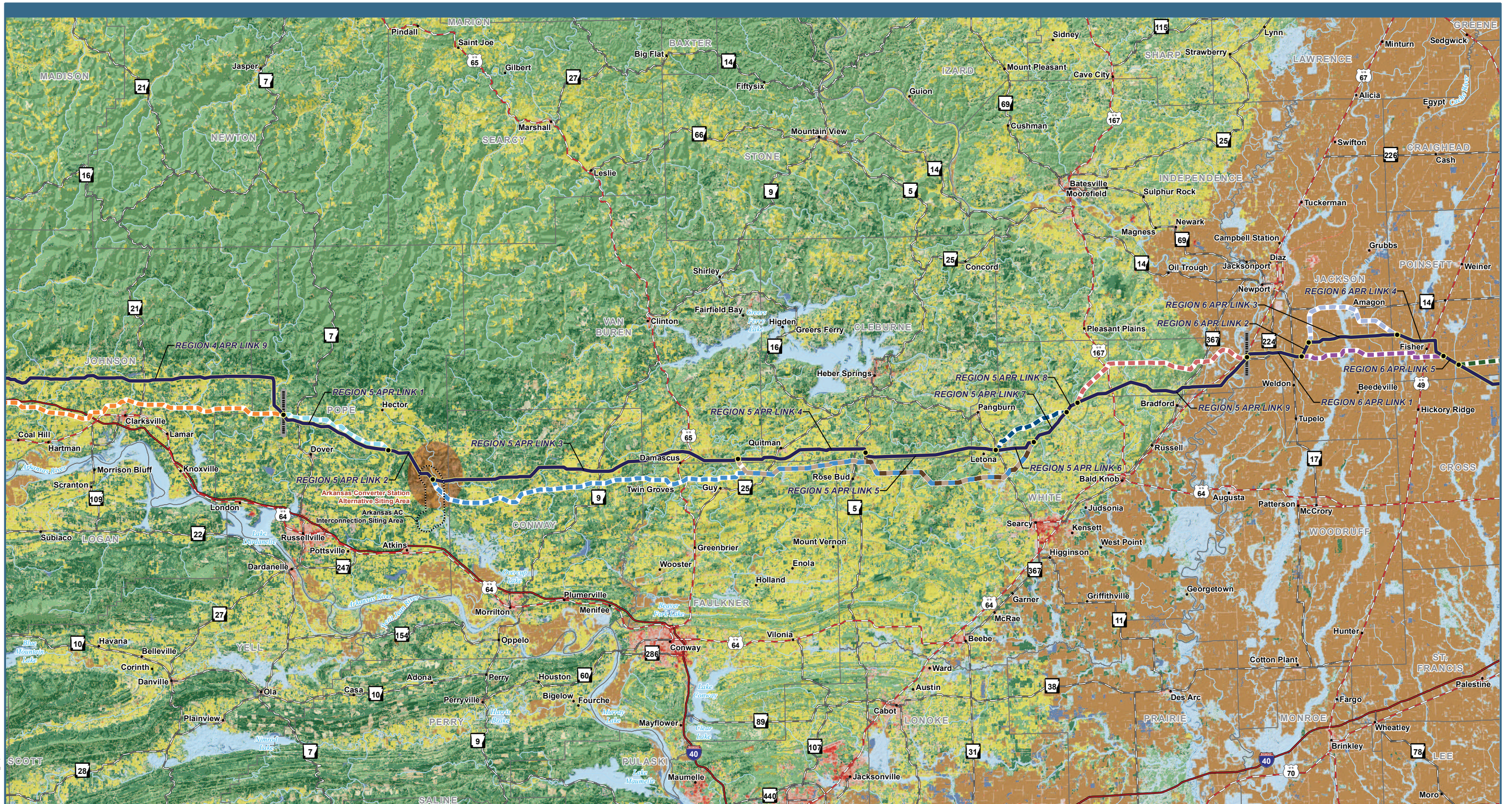


Plains & Eastern EIS

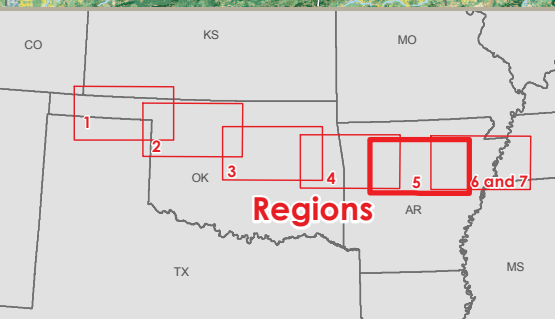
<p>Project Features</p> <ul style="list-style-type: none"> HVDC Applicant Proposed Route (APR) Link Node Region Break Line Converter Station Siting Area Lee Creek Variation AC Interconnection Siting Area 	<p>Region 3 HVDC Alternative Routes</p> <ul style="list-style-type: none"> AR 3-C AR 3-D AR 3-E <p>Region 4 HVDC Alternative Routes</p> <ul style="list-style-type: none"> AR 4-A AR 4-B AR 4-C AR 4-D 	<p>Region 5 HVDC Alternative Routes</p> <ul style="list-style-type: none"> AR 4-E AR 5-A AR 5-B <p>Land Cover</p> <ul style="list-style-type: none"> Open Water Developed, Open Space Developed, Low Intensity Developed, Medium Intensity 	<ul style="list-style-type: none"> Developed, High Intensity Barren Land Deciduous Forest Evergreen Forest Mixed Forest Shrub/Scrub Grassland/Herbaceous Pasture/Hay Cultivated Crops 	<ul style="list-style-type: none"> Woody Wetlands Emergent Herbaceous Wetlands
--	--	--	---	--

Note: Routes shown with representative lines not indicative of corridor or ROW widths

Figure 3.10-3d: Land Cover in Region 4



P:\4823_Plains_and_Eastern_EIS\GIS\Layouts\EIS\Chapter3\Land_Use_LandCover_Map_Sk.mxd Date Modified: 9/16/2014

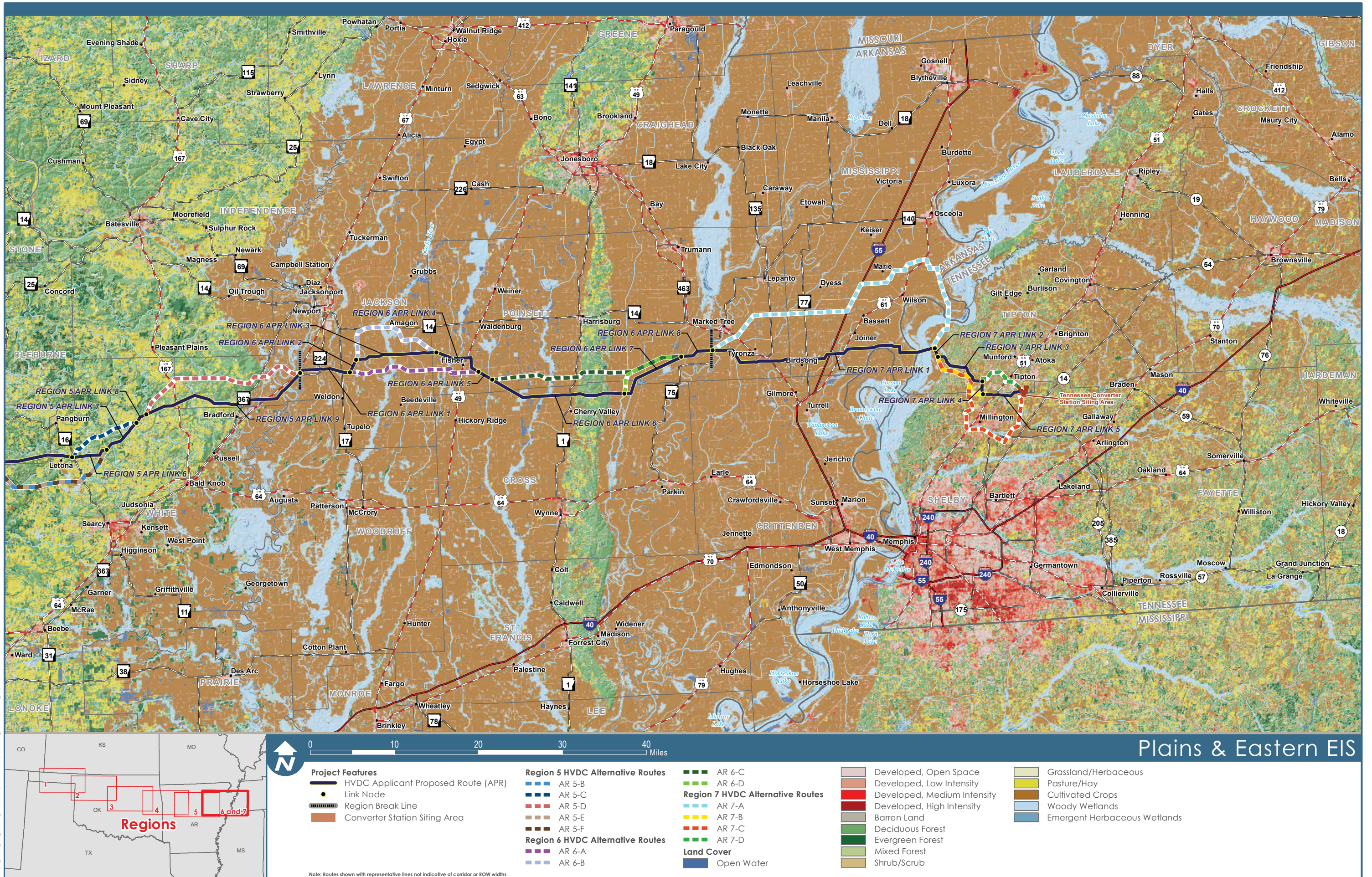


Plains & Eastern EIS

<p>Project Features</p> <ul style="list-style-type: none"> HVDC Applicant Proposed Route (APR) Link Node Region Break Line Converter Station Siting Area AC Interconnection Siting Area 	<p>Region 4 HVDC Alternative Routes</p> <ul style="list-style-type: none"> AR 4-E <p>Region 5 HVDC Alternative Routes</p> <ul style="list-style-type: none"> AR 5-A AR 5-B AR 5-C AR 5-D AR 5-E AR 5-F 	<p>Region 6 HVDC Alternative Routes</p> <ul style="list-style-type: none"> AR 6-A AR 6-B AR 6-C <p>Land Cover</p> <ul style="list-style-type: none"> Open Water Developed, Open Space Developed, Low Intensity Developed, Medium Intensity 	<ul style="list-style-type: none"> Developed, High Intensity Barren Land Deciduous Forest Evergreen Forest Mixed Forest Shrub/Scrub Grassland/Herbaceous Pasture/Hay Cultivated Crops
		<ul style="list-style-type: none"> Woody Wetlands Emergent Herbaceous Wetlands 	

Note: Routes shown with representative lines not indicative of corridor or ROW widths

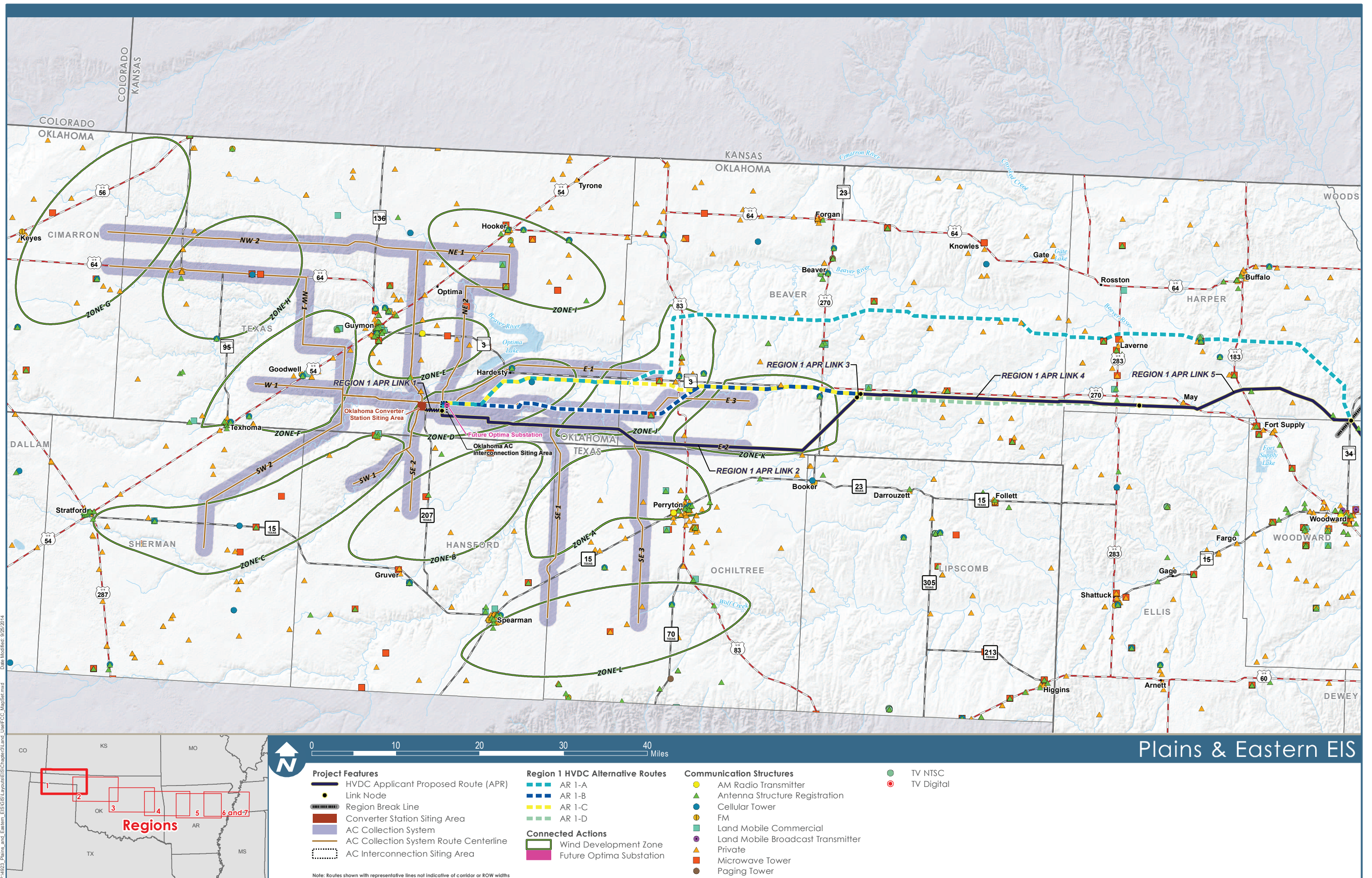
Figure 3.10-3e: Land Cover in Region 5



P:\4823_Plains_and_Eastern_EIS\GIS\Layouts\EIS\Chapter3_Land_Use_LandCover_Map_Sk.mxd Date Modified: 9/16/2014

Data Sources: Land Cover (Jin et al 2013)

Figure 3.10-3f: Land Cover in Regions 6 & 7



P:\4823_Plains_and_Eastern_EIS\GIS\Layouts\EIS\Chapter3\Land_Use\FCC_MapSeries.mxd
 Date Modified: 9/25/2014

Data Sources: Communication Structures (FCC 2012)

Figure 3.10-4a: Communications Structures in Region 1

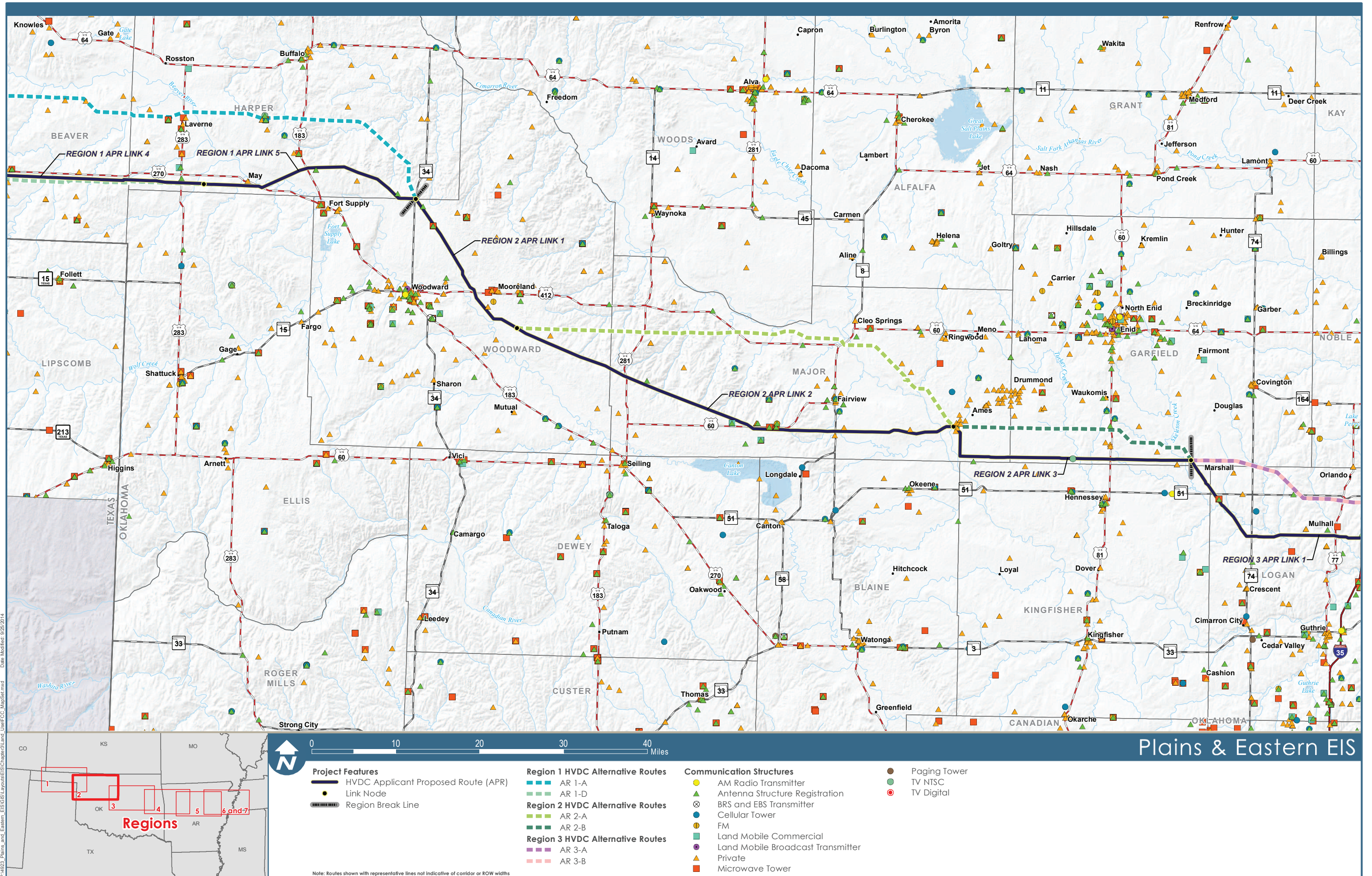
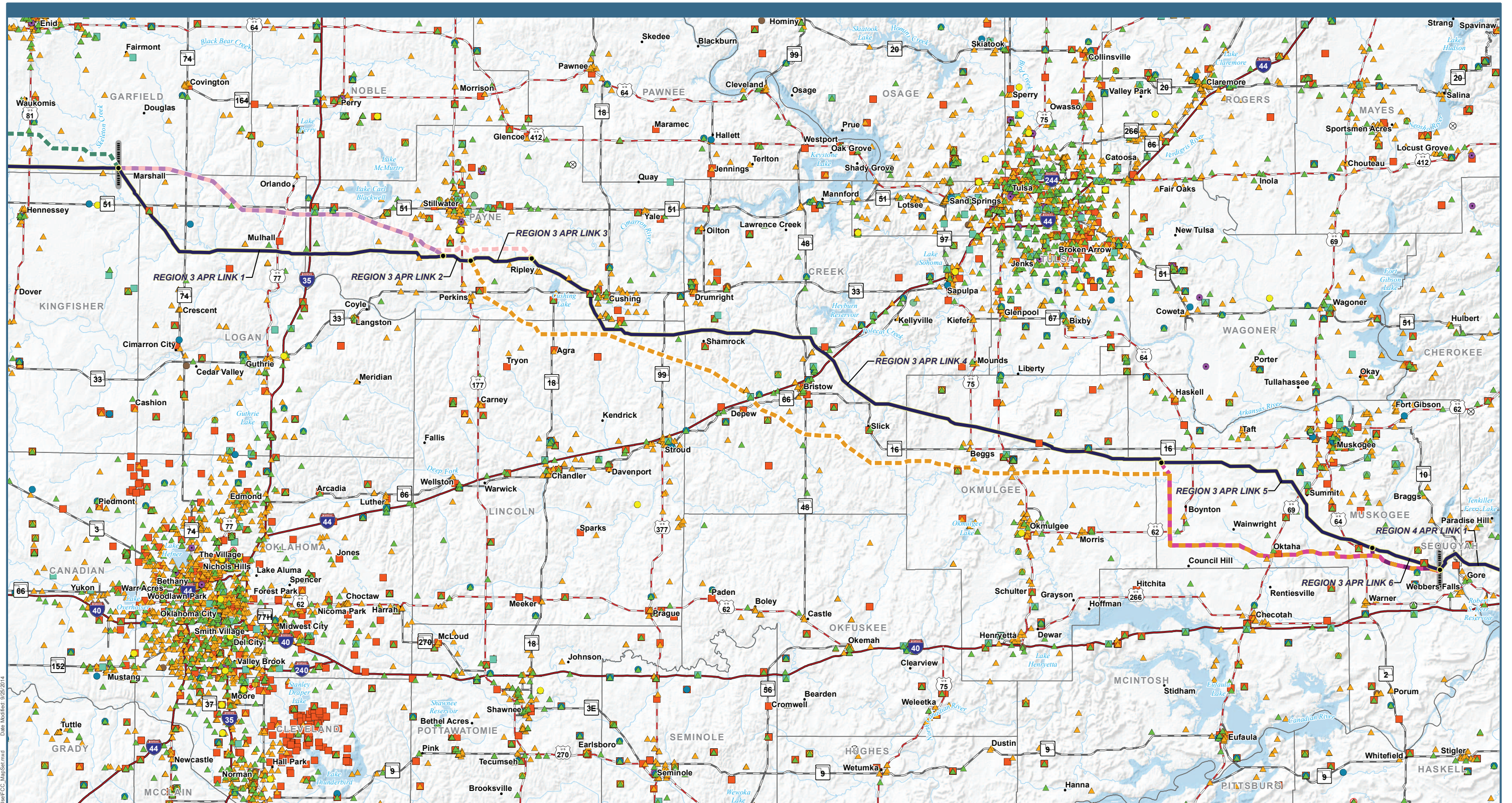
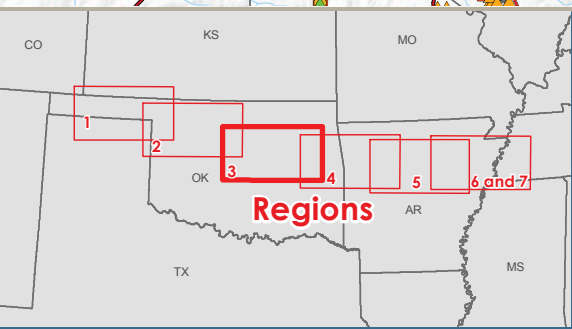


Figure 3.10-4b: Communications Structures in Region 2



P:\4823_Plains_and_Eastern_EIS\Layouts\EIS\Chapter3\Land_Use\FCC_MapSet.mxd Date Modified: 9/26/2014



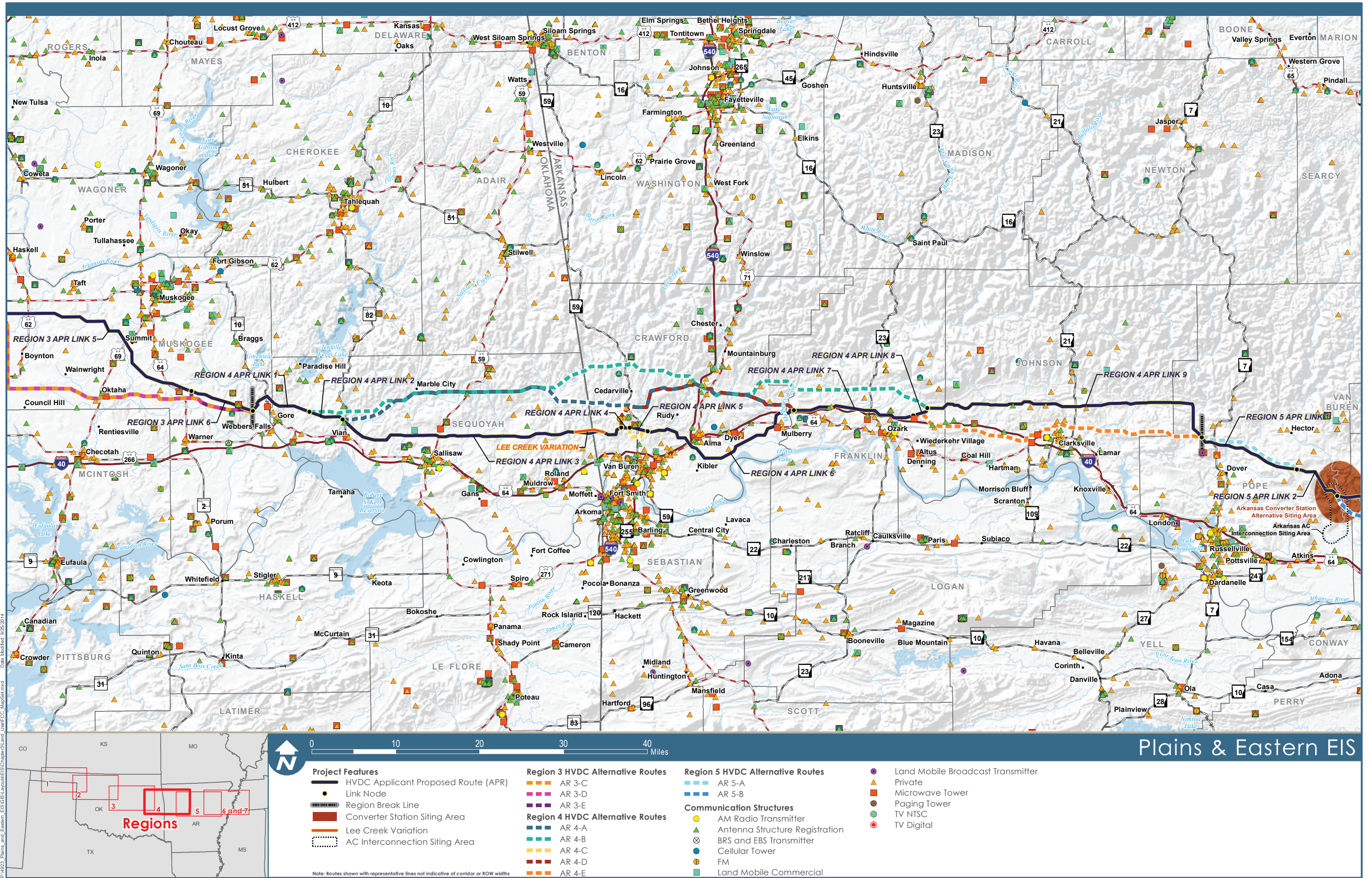
- | | | | |
|--|---|--|--|
| <p>Project Features</p> <ul style="list-style-type: none"> — HVDC Applicant Proposed Route (APR) ● Link Node Region Break Line | <p>Region 2 HVDC Alternative Routes</p> <ul style="list-style-type: none"> — AR 2-B <p>Region 3 HVDC Alternative Routes</p> <ul style="list-style-type: none"> — AR 3-A — AR 3-B — AR 3-C — AR 3-D — AR 3-E | <p>Communication Structures</p> <ul style="list-style-type: none"> ● AM Radio Transmitter ▲ Antenna Structure Registration ⊗ BRS and EBS Transmitter ● Cellular Tower ● FM ■ Land Mobile Commercial ● Land Mobile Broadcast Transmitter ▲ Private ■ Microwave Tower | <ul style="list-style-type: none"> ● Paging Tower ● TV NTSC ● TV Digital |
|--|---|--|--|

Note: Routes shown with representative lines not indicative of corridor or ROW widths

Plains & Eastern EIS

Figure 3.10-4c: Communication Structures in Region 3

Data Sources: Communication Structures (FCC 2012)

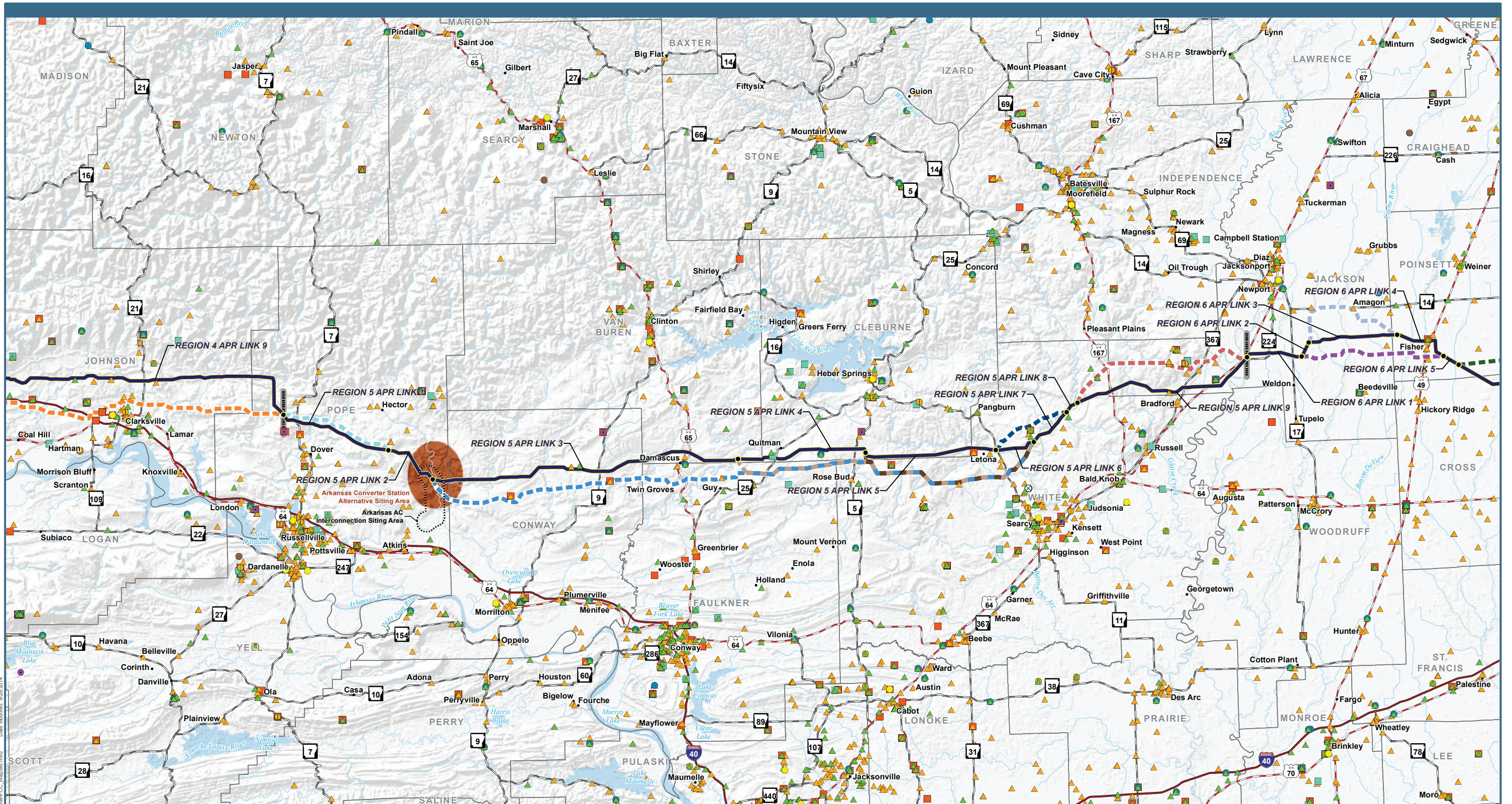


P:\4823_Plains_and_Eastern_EIS\Layouts\EIS\Chapter3\Land_Use\FCC_MapSeries.mxd
 Date Modified: 9/25/2014

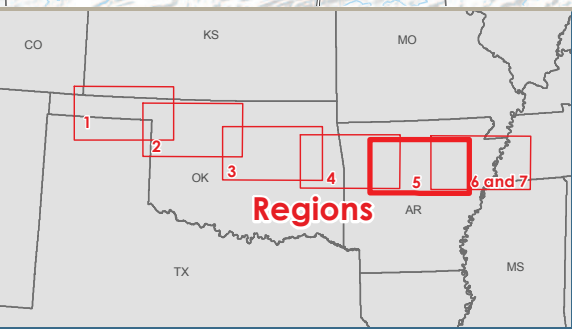
Data Sources: Communication Structures (FCC 2012)

Plains & Eastern EIS

Figure 3.10-4d: Communication Structures in Region 4



P:\4823_Plains_and_Eastern_EIS\GIS\Layouts\EIS\Chapter3\Land_Use\FCC_MapSet.mxd
 Date Modified: 9/25/2014



Project Features

- HVDC Applicant Proposed Route (APR)
- Link Node
- Region Break Line
- Converter Station Siting Area
- AC Interconnection Siting Area

Region 4 HVDC Alternative Routes

- AR 4-E

Region 5 HVDC Alternative Routes

- AR 5-A
- AR 5-B
- AR 5-C
- AR 5-D
- AR 5-E
- AR 5-F

Region 6 HVDC Alternative Routes

- AR 6-A
- AR 6-B
- AR 6-C

Communication Structures

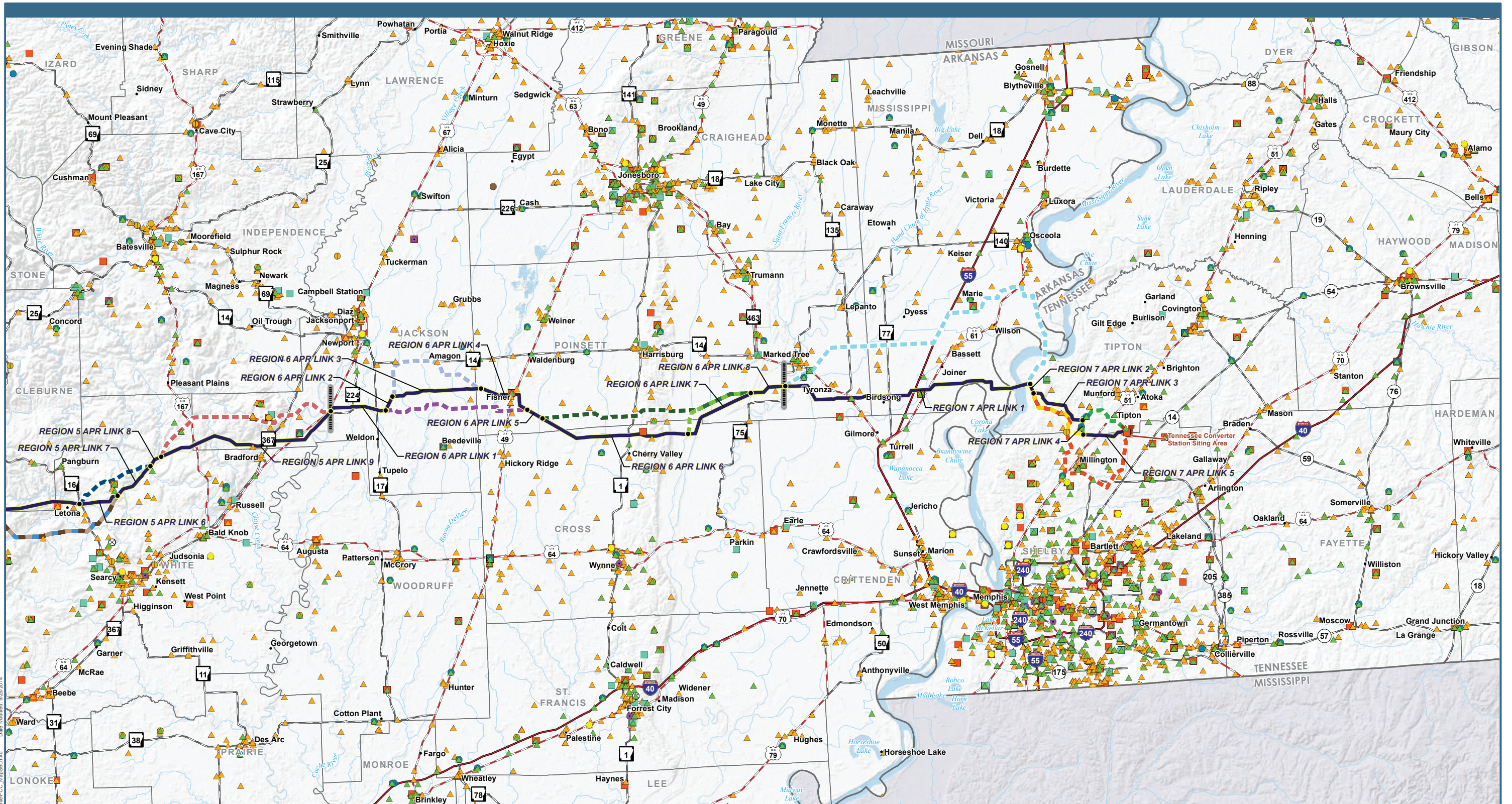
- AM Radio Transmitter
- ⊗ Antenna Structure Registration
- ⊗ BRS and EBS Transmitter
- Cellular Tower
- FM

- Land Mobile Commercial
- Land Mobile Broadcast Transmitter
- ▲ Private
- Microwave Tower
- Paging Tower
- TV NTSC
- TV Digital

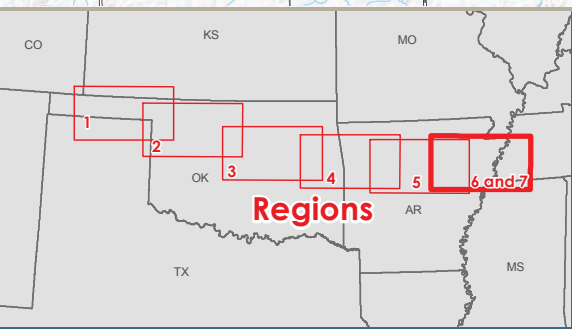
Note: Routes shown with representative lines not indicative of corridor or ROW widths

Plains & Eastern EIS

Figure 3.10-4e: Communication Structures in Region 5



P:\4823_Plains_and_Eastern_EIS\GIS\Layouts\EIS\Chapter3\Land_Use\FCC_MapSet.mxd
 Date Modified: 9/25/2014



Project Features

- HVDC Applicant Proposed Route (APR)
- Link Node
- Region Break Line
- Converter Station Siting Area

Region 5 HVDC Alternative Routes

- AR 5-B
- AR 5-C
- AR 5-D
- AR 5-E
- AR 5-F

Region 6 HVDC Alternative Routes

- AR 6-A
- AR 6-B
- AR 6-C

Region 7 HVDC Alternative Routes

- AR 7-A
- AR 7-B
- AR 7-C
- AR 7-D

Communication Structures

- AM Radio Transmitter
- ▲ Antenna Structure Registration
- ⊗ BRS and EBS Transmitter

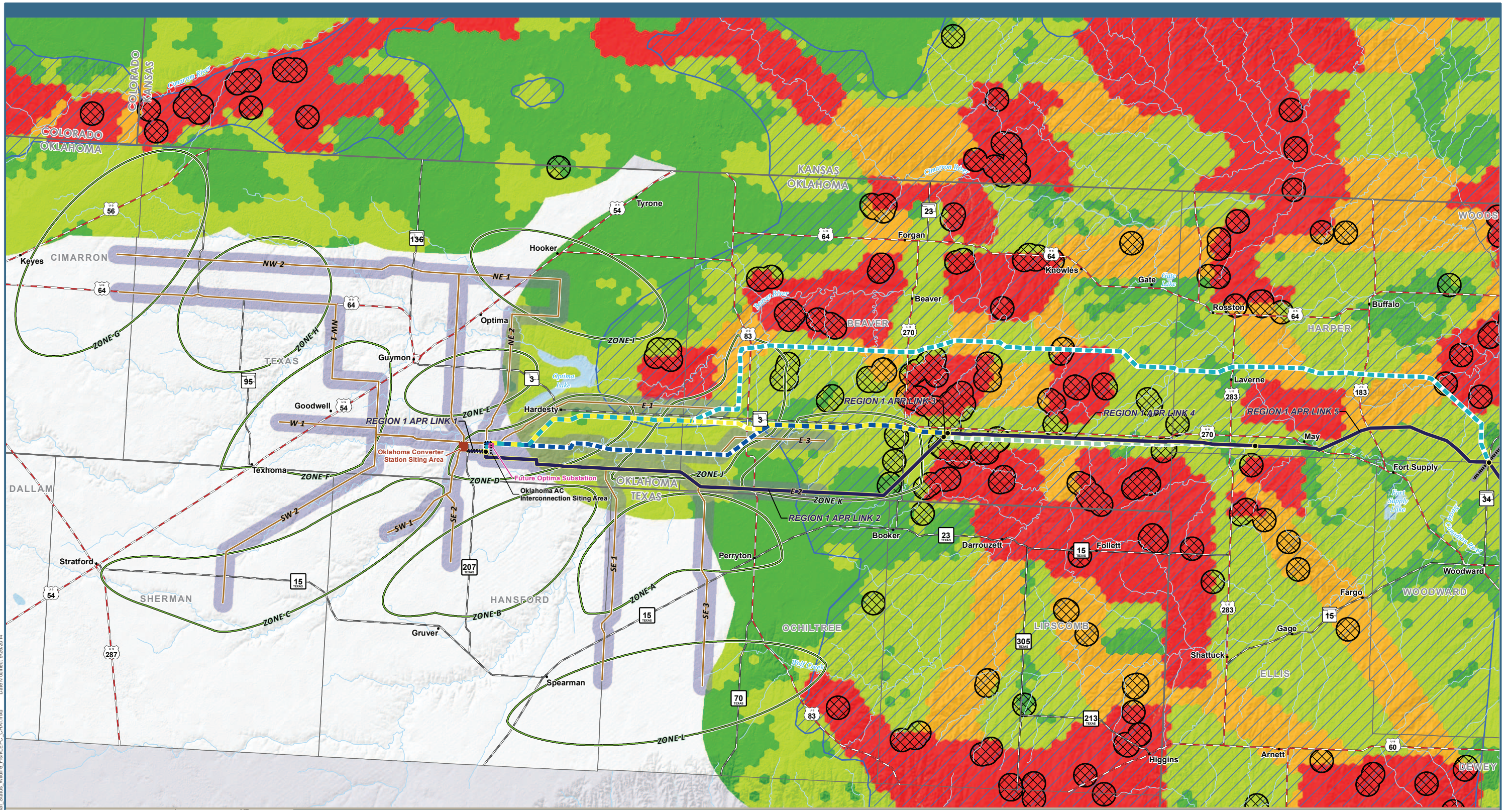
- Cellular Tower
- FM
- Land Mobile Commercial
- Land Mobile Broadcast Transmitter
- Private
- Microwave Tower
- Paging Tower
- TV NTSC
- TV Digital

Note: Routes shown with representative lines not indicative of corridor or ROW widths

Plains & Eastern EIS

Figure 3.10-4f: Communication Structures in Regions 6 & 7

Data Sources: Communication Structures (FCC 2012)



P:\4823_Plains_and_Eastern_EIS\GIS\Mapouts\EIS\Chapter3\Special_Status\Wildlife\FishLEPC_CHAT.mxd Date Modified: 9/26/2014



0 10 20 30 40 Miles

Project Features

- HVDC Applicant Proposed Route (APR)
- Link Node
- Region Break Line
- Converter Station Siting Area
- AC Collection System
- AC Collection System Route Centerline
- AC Interconnection Siting Area

Region 1 HVDC Alternative Routes

- AR 1-A
- AR 1-B
- AR 1-C
- AR 1-D

Connected Actions

- Wind Development Zone
- Future Optima Substation

Lesser Prairie-chicken Leks and Estimated Occupied Range

- Lesser Prairie-chicken Lek*
- Estimated Occupied Range

Lesser Prairie-chicken Crucial Habitat

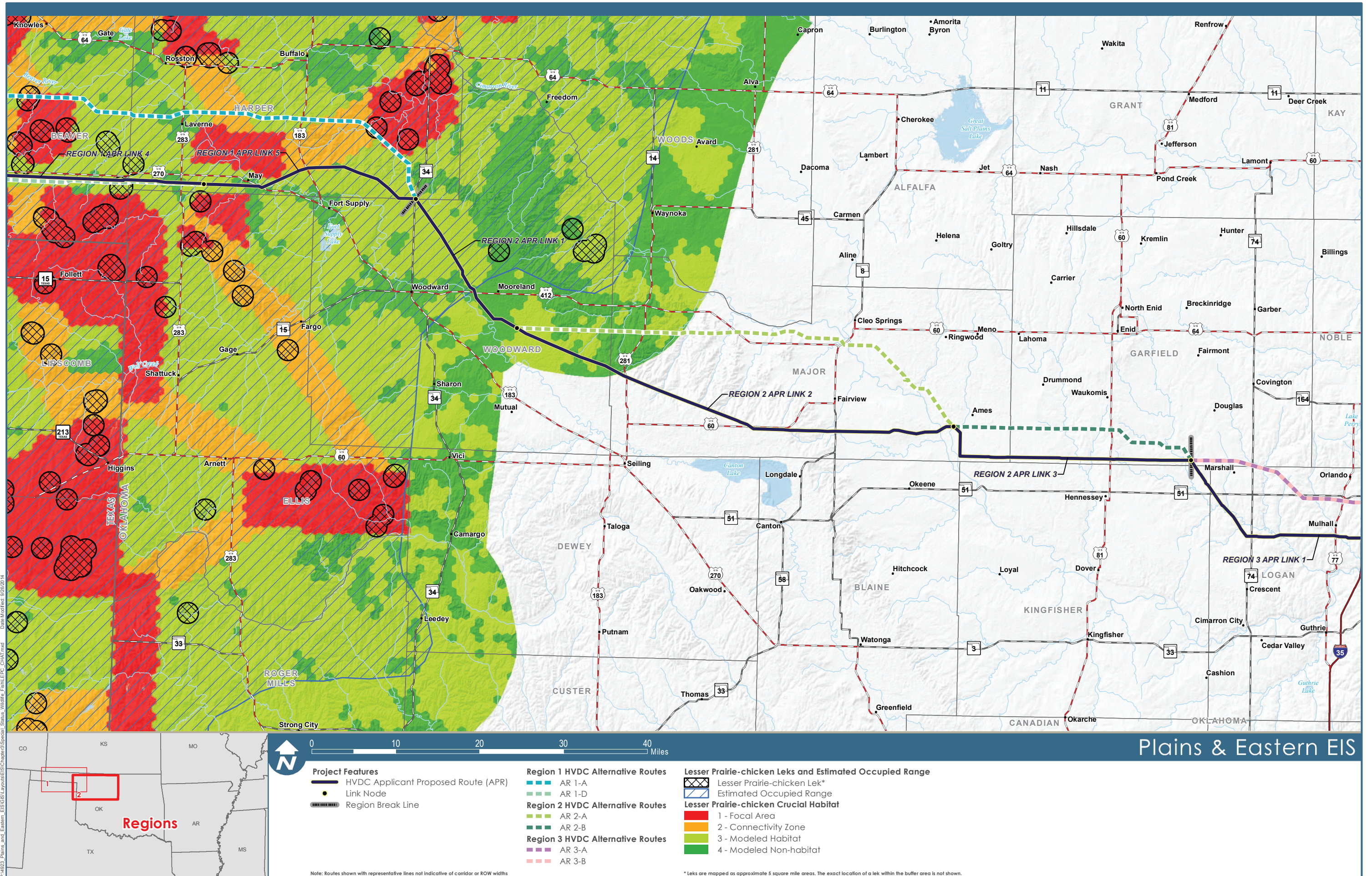
- 1 - Focal Area
- 2 - Connectivity Zone
- 3 - Modeled Habitat
- 4 - Modeled Non-habitat

Plains & Eastern EIS

*Note: Routes shown with representative lines not indicative of corridor or ROW widths

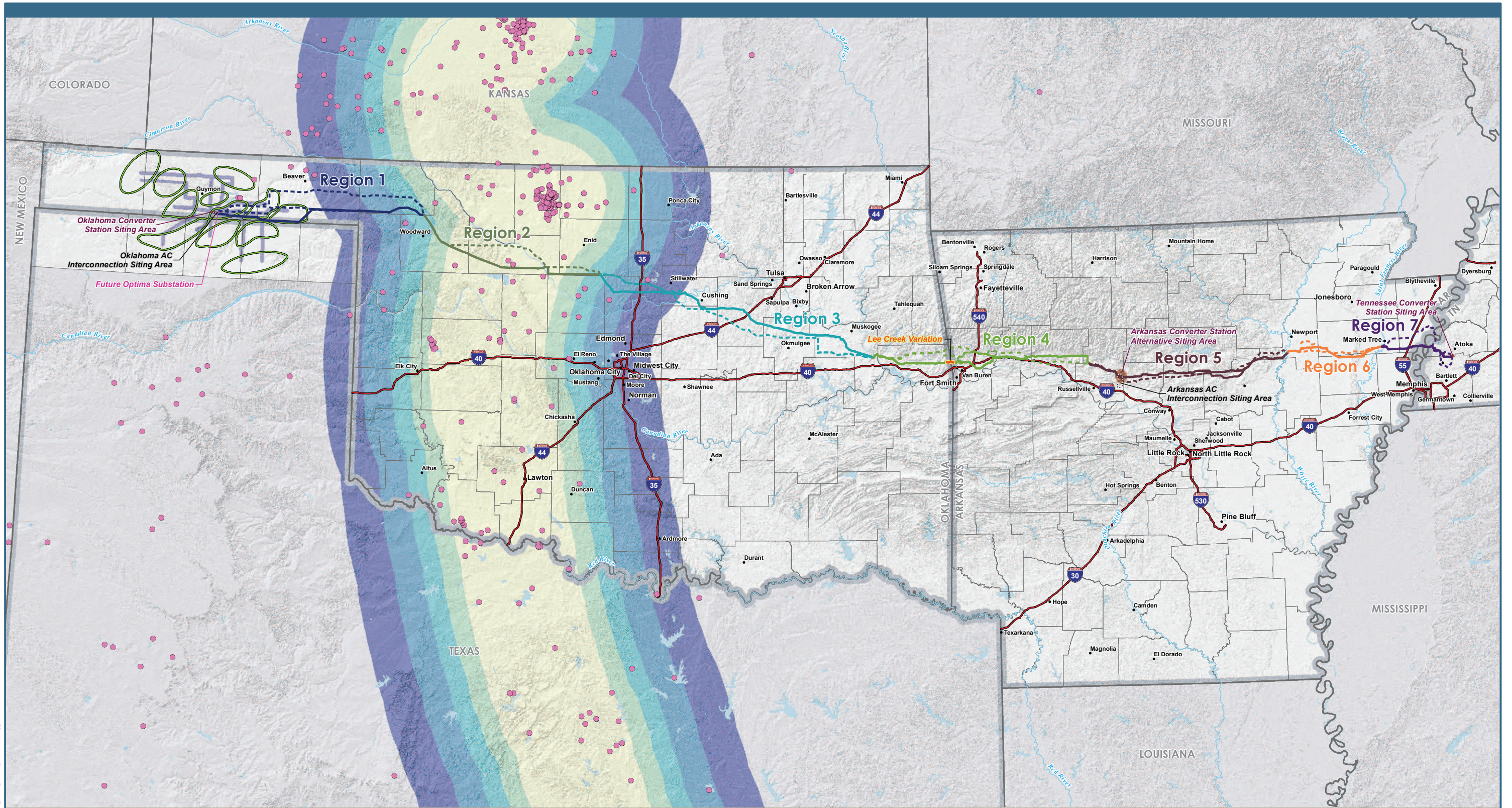
*Leks are mapped as approximate 5 square mile areas. The exact location of a lek within the buffer area is not shown.

Figure 3.14-1a: Lesser Prairie-chicken Habitat in Region 1



Data Sources: Lesser Prairie-chicken Crucial Habitat (KBS 2013b); Lesser Prairie-chicken Lek (KBS 2014); Estimated Occupied Range (KBS 2013a, 79 FR 19974, April 10, 2014)

Figure 3.14-1b: Lesser Prairie-chicken Habitat in Region 2



P:\423_Plains_and_Eastern_EIS\GIS\Layouts\EIS\Chapter3\Special_Status_Wildlife_FreshWhooping_Crane.mxd Date Modified: 9/29/2014



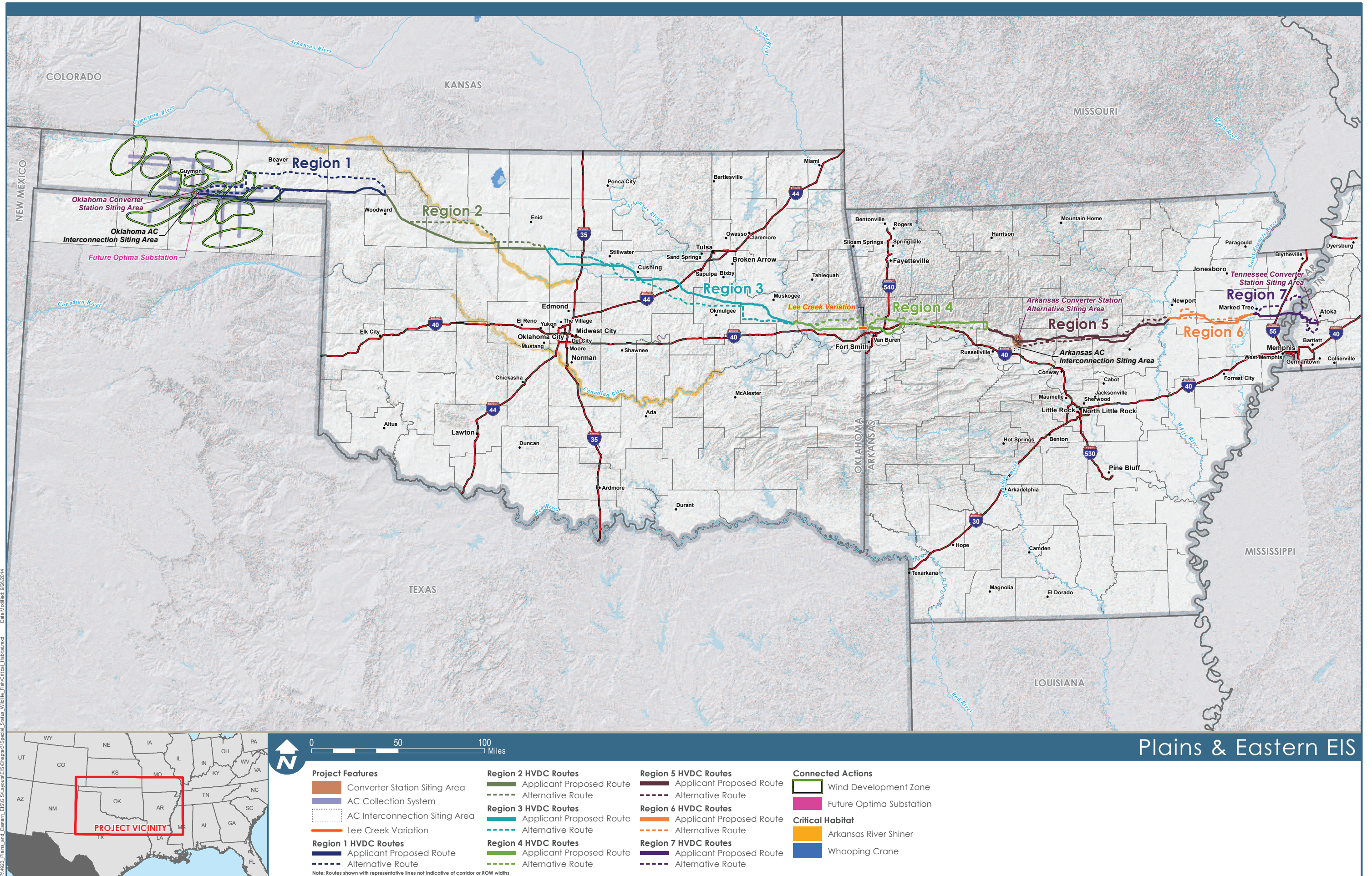
Plains & Eastern EIS

<p>Project Features</p> <ul style="list-style-type: none"> Converter Station Siting Area AC Collection System AC Interconnection Siting Area Lee Creek Variation <p>Region 1 HVDC Routes</p> <ul style="list-style-type: none"> Applicant Proposed Route Alternative Route 	<p>Region 2 HVDC Routes</p> <ul style="list-style-type: none"> Applicant Proposed Route Alternative Route <p>Region 3 HVDC Routes</p> <ul style="list-style-type: none"> Applicant Proposed Route Alternative Route <p>Region 4 HVDC Routes</p> <ul style="list-style-type: none"> Applicant Proposed Route Alternative Route 	<p>Region 5 HVDC Routes</p> <ul style="list-style-type: none"> Applicant Proposed Route Alternative Route <p>Region 6 HVDC Routes</p> <ul style="list-style-type: none"> Applicant Proposed Route Alternative Route <p>Region 7 HVDC Routes</p> <ul style="list-style-type: none"> Applicant Proposed Route Alternative Route 	<p>Connected Actions</p> <ul style="list-style-type: none"> Wind Development Zone Future Optima Substation
<p>Whooping Crane Migration Corridor</p> <ul style="list-style-type: none"> 60 mi (75% of sightings) 80 mi (80% of sightings) 100 mi (85% of sightings) 130 mi (90% of sightings) 170 mi (95% of sightings) 			

Note: Routes shown with representative lines not indicative of corridor or ROW widths

Data Sources: Whooping Migration Corridor (USFWS 2014e); Whooping Crane Sightings (USFWS 2014f)

Figure 3.14-2: Whooping Crane Migration Corridor



Plains & Eastern EIS

Figure 3.14-3: Critical Habitat