



Oak Ridge Site Specific Advisory Board

Groundwater Strategy Briefing & Discussion

Daniel J. Goode, Ph.D.
Research Hydrologist

U.S. Department of the Interior
U.S. Geological Survey



November 13, 2013



U.S. Geological Survey U.S. Department of the Interior

Mission: The USGS serves the Nation by providing reliable scientific information to describe and understand the Earth; minimize loss of life and property from natural disasters; manage water, biological, energy, and mineral resources; and enhance and protect our quality of life.



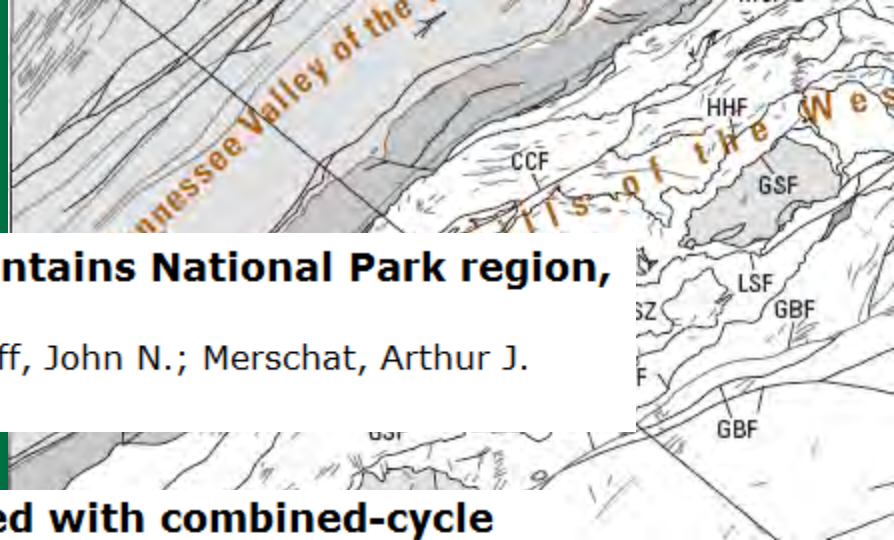
WATER RESOURCES PUBLICATIONS OF THE U.S. GEOLOGICAL SURVEY FOR TENNESSEE, 1906-1987

Glenn, L.C., 1906, Underground waters of Tennessee and Kentucky west of the Tennessee River and of an adjacent area in Illinois: USGS Water-Supply Paper 164.

Recent Reports

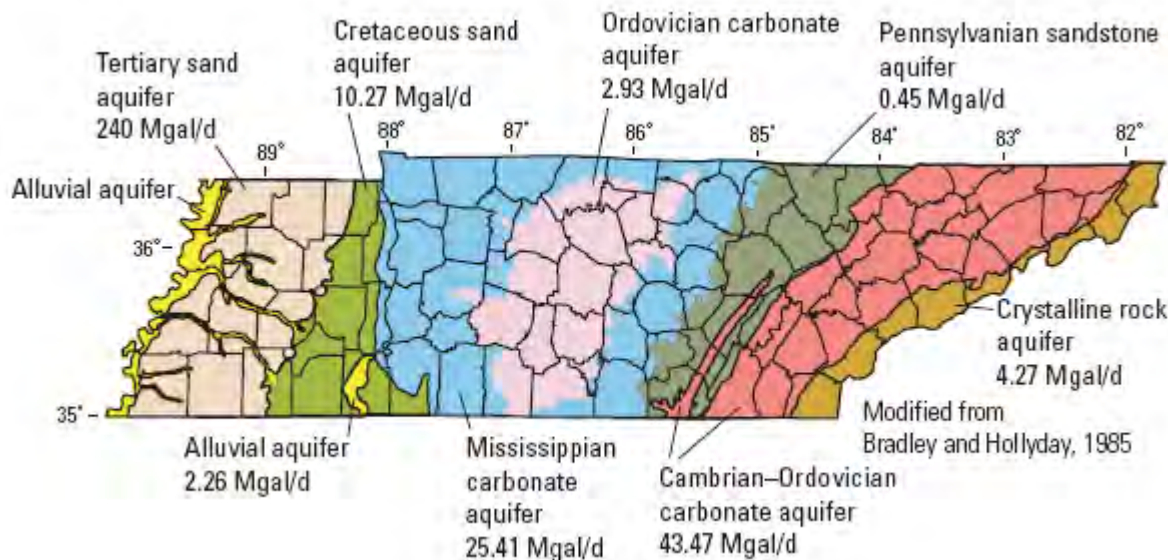
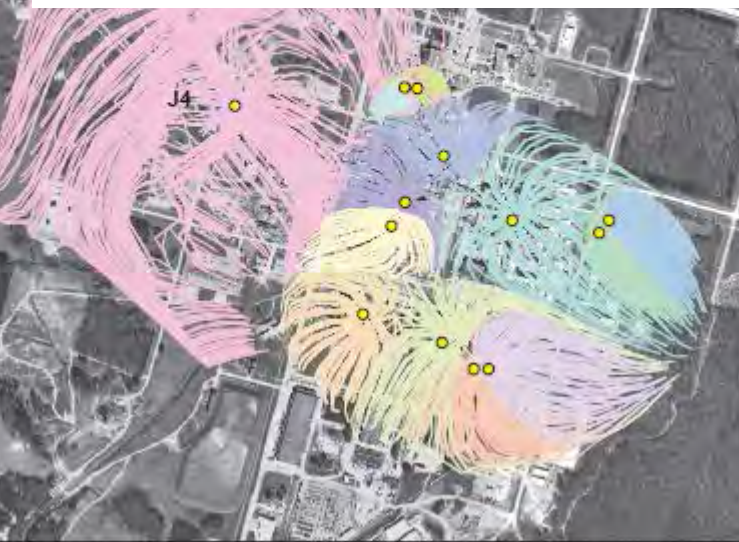
Geologic map of the Great Smoky Mountains National Park region, Tennessee and North Carolina

2012, Southworth, Scott; Schultz, Art; Aleinikoff, John N.; Merschat, Arthur J.
USGS Scientific Investigations Map: 2997



Effects of groundwater withdrawals associated with combined-cycle combustion turbine plants in west Tennessee and northern Mississippi

2012, Haugh, Connor J.
USGS Scientific Investigations Report: 2012-5072



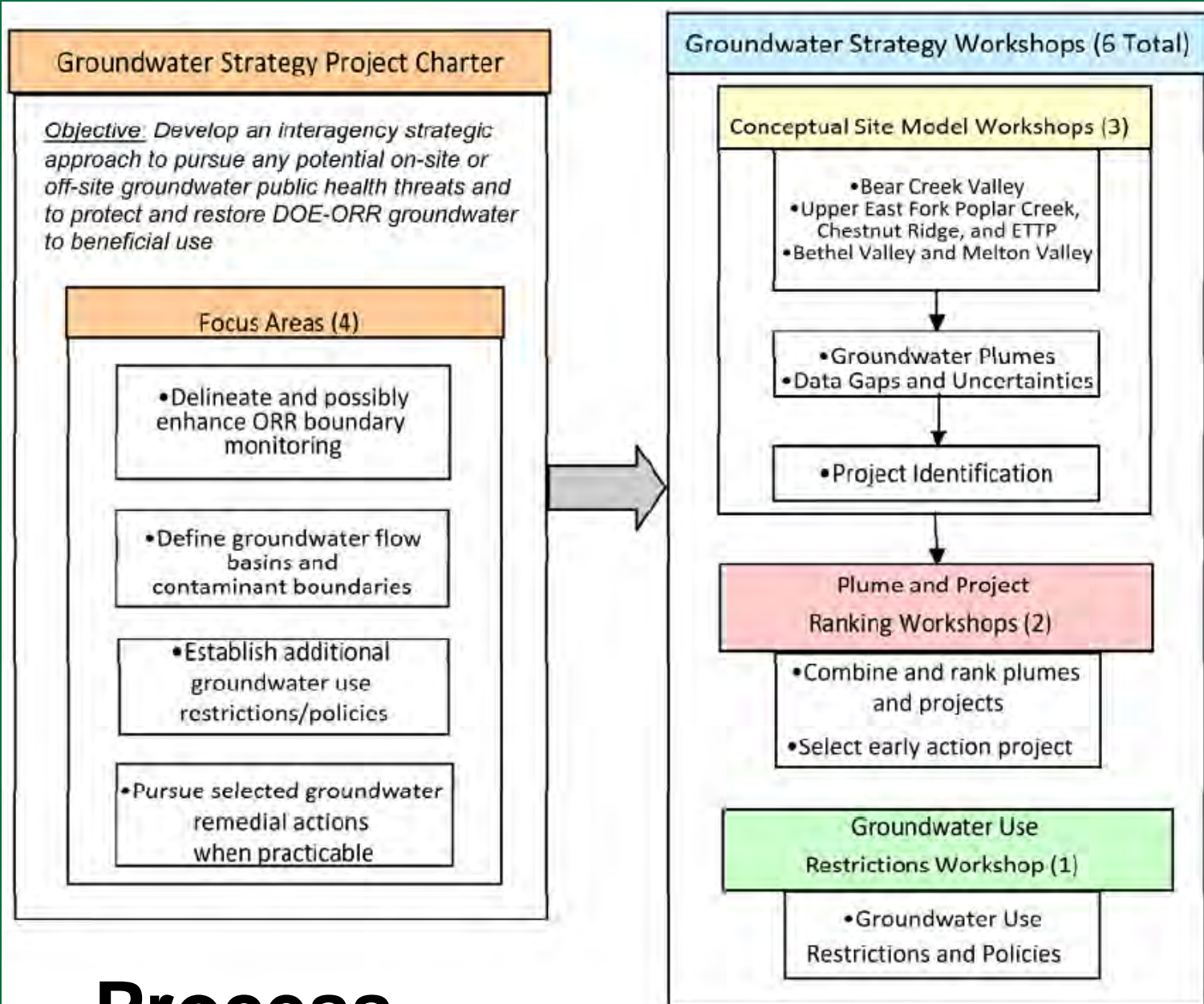
Public water-supply systems and associated water use in Tennessee, 2005

2010, Robinson, John A.; Brooks, Jaala M.
USGS Open-File Report: 2010-1226



Outline

- **Strategy Highlights**
- **Off-site Groundwater Quality Assessment Project**
- **ORR Groundwater Program**
- **Plume Rankings**
- **Off-site Groundwater Use**
- **Discussion**



Process

Fig. 1.1. Groundwater strategy project charter and workshops.

Project Team (primary participants)

- DOE – Elizabeth Phillips
- EPA – Carl Froede Jr. & Bill O'Steen
- TDEC – Randy Young, Gareth Davies, & Wesley White
- UCOR/RSI – Lynn Sims, Dick Ketelle, Craig Rightmire, & Holly Clancy
- SAIC – Samantha Pack, Bob Gelinas, Kevin Jago, & Allen Motley
- USGS – Dan Goode (liaison for ORSSAB / EM Committee, via DOE-USGS IA)

Selection of the Off-site Groundwater Quality Assessment Project

- **Consensus among the FFA parties was reached on key groundwater issues, including:**
 - Additional near-term off-site monitoring is needed to assess potential off-site risks. This need guided selection of the **Off-site Groundwater Quality Assessment Project**.
 - An ongoing **ORR Groundwater Program** to systematically prioritize and investigate groundwater plumes and data gaps is needed.

Groundwater Strategy Recommendations

- **“ORR Groundwater Program”**
Additional baseline DOE funding
- **Off-site Groundwater Quality
Assessment Project**
FY2014 – FY2016 (early action \$)
- **Plume rankings for long-term
strategy**

Take Home Messages

- **Strategic Planning Process Worked: DOE, EPA, and TDEC participants (Strategy Team) agree on Recommendations**
- **Initial issues raised (to USGS) by ORSSAB EM addressed:**
 - **Uncertainty about potential off-site migration via deep groundwater flow paths**
 - **Can groundwater modeling help?**

Outline

- Strategy Highlights
- **Off-site Groundwater Quality Assessment Project**
- ORR Groundwater Program
- Plume Rankings
- Off-site Groundwater Use
- Discussion

ORR Groundwater Strategy

Near-term Steps

Conduct an Off-site Groundwater Quality Assessment in FY14 through FY16 as the first project under the ORR Groundwater Program.

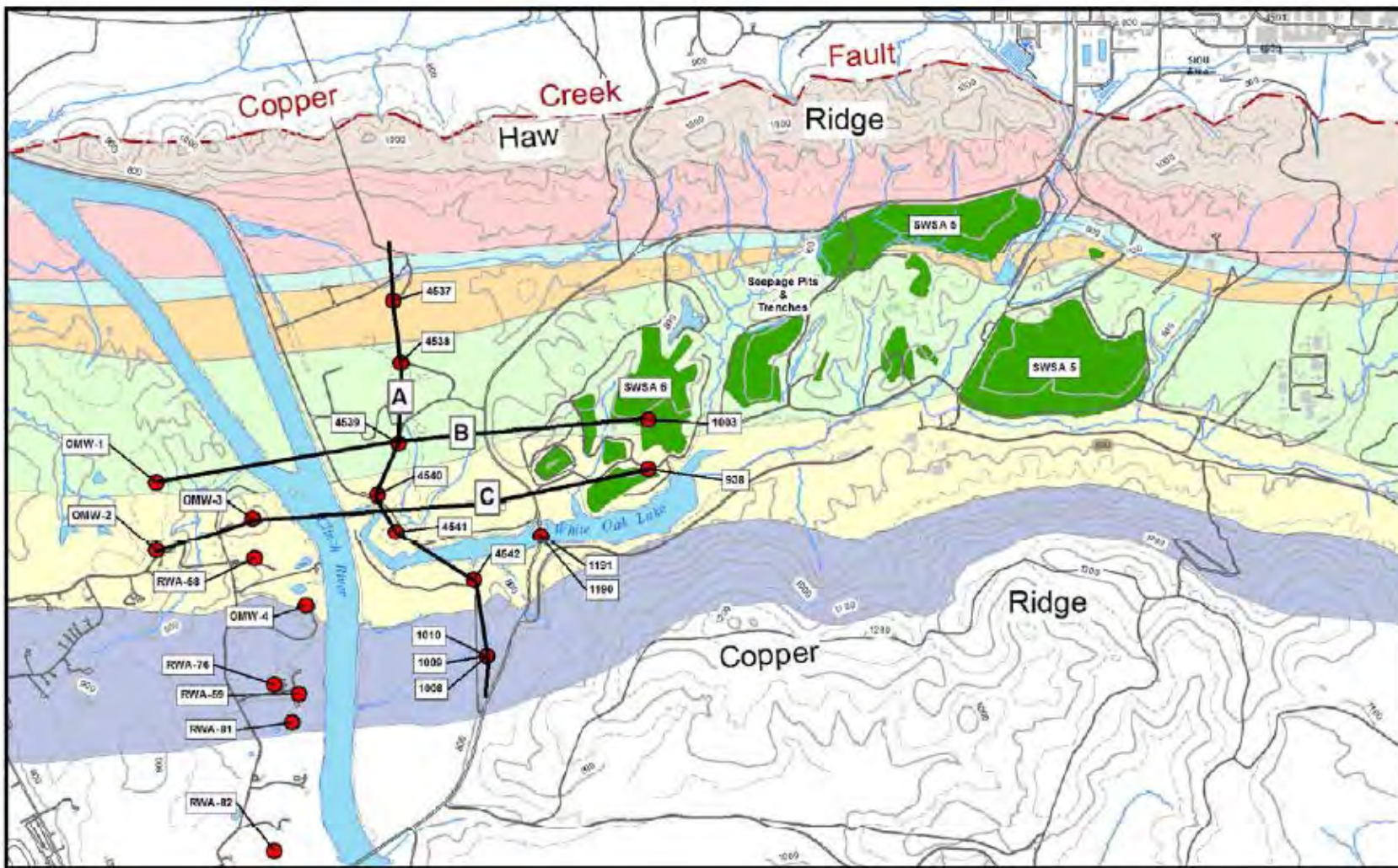
- The project is consistent with the ORR Groundwater Strategy's ranking efforts and will be the focus of the new ORR Groundwater Program for the first 3 years.
- A Data Quality Objectives approach will be used to sample and analyze off-site groundwater, including residential wells and springs in downgradient areas to determine:
 - if contaminants unique to the DOE Reservation are present
 - if there is a potential public health risk from DOE contaminants off-site
- After data collection is complete, results will be evaluated to determine:
 - if follow-on actions may be needed
 - the next focus areas of the ORR Groundwater Program

Reduce Uncertainty about Potential Off-site Migration and Risks

- “There have been recent sporadic, low-concentration detections of radionuclides and volatile organic compounds in off-site sampling locations downgradient of the ORR . . . There are no known health impacts from contaminants detected off-site . . . However, in order to minimize groundwater pumping that could draw DOE contaminants off-site, license agreements restricting groundwater use have been put in place for some residents in the area west of the Clinch River across from Melton Valley”

Source: Sep 2013 ORR Groundwater Strategy D1, V. 1, p. ES-1
(DOE/OR/01-2628/V1&D1)





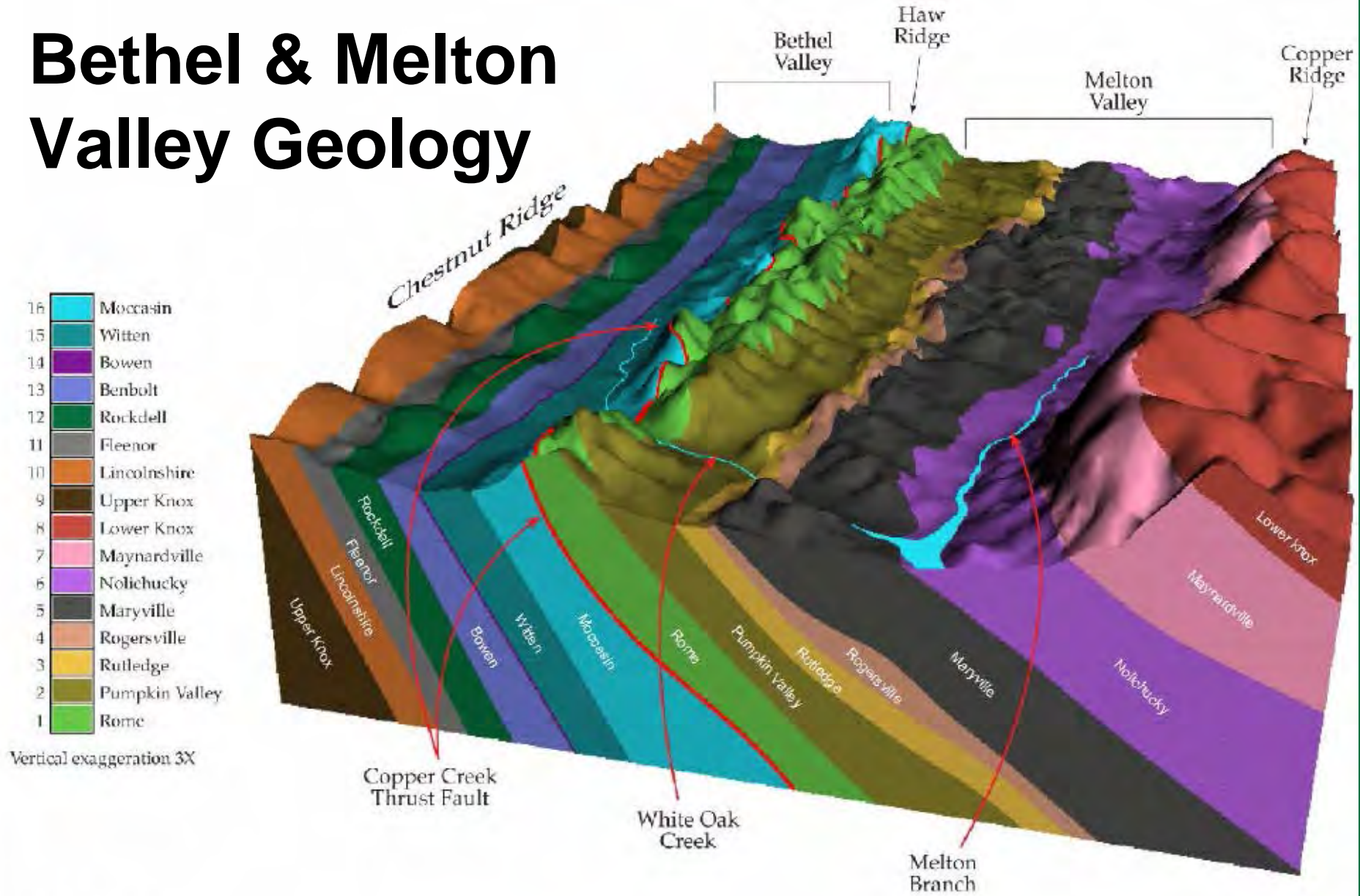
Source: DOE 2013

Melton Valley Off site

Fig. G.10. Locations of Melton Valley exit pathway wells and off-site monitoring wells.



Bethel & Melton Valley Geology



Source: DOE 1997a

G13-0032_WOC_geologic block model

Fig. G.6. 3-D Block diagram of geology in Melton and Bethel Valleys (view up-valley to the east).

“Summary observations from groundwater (DOE 2013) indicate the following for the Picket Wells:

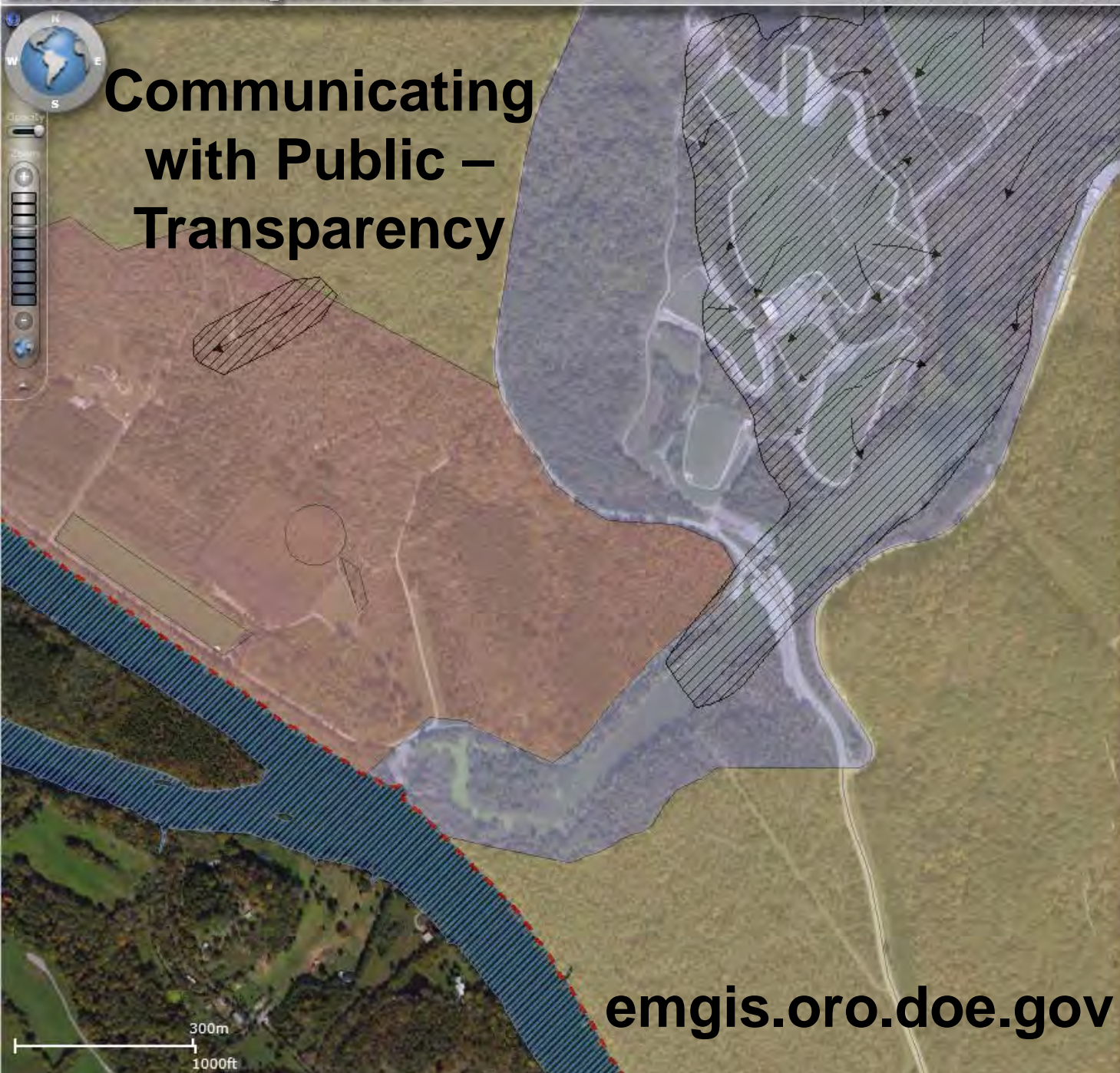
- A number of radionuclides and VOCs [solvents] have been detected periodically at low levels in different monitoring zones on the MV Picket.
- Intermittent detections of metals and VOCs have been observed in off-site wells across (on the west side of) the Clinch. Two detections of ^{90}Sr [strontium] and one of ^{99}Tc [technitium] have been observed.

Source: Sep 2013 ORR Groundwater Strategy D1, V. 2, p. G-49 (DOE/OR/01-2628/V2&D1)

“Summary observations from groundwater (DOE 2013) indicate the following for the Picket Wells: (cont.)

- **Natural head gradients indicate groundwater movement toward the Clinch River from both east and west of the river. Alteration of the natural gradients caused by pumping can induce flow through interconnected fractures. This type of gradient alteration has the potential to induce contaminant movement from areas beneath the river to off-site wells.”**

Source: Sep 2013 ORR Groundwater Strategy D1, V. 2, p. G-49 (DOE/OR/01-2628/V2&D1)



Communicating with Public – Transparency

- Data
 - Transportation
 - Structures
 - Remediated Areas
 - Streams
 - Boundaries & Zones
 - Plant Boundaries
 - Oak Ridge Reservation
 - City Boundaries
 - GW Directional Flow
 -
 - Groundwater Plumes
 -
 - Clean Parcels
 -
 - Oak Ridge Site
 - Suspected Clean
 - Decision Area
 - DOE Operational Area
 - Known Contamination Areas
 - Sediment Contamination
 - Natural Features
 - Rivers
 -
 - 100-yr Floodplain
 -
 - 500-yr Floodplain
 -

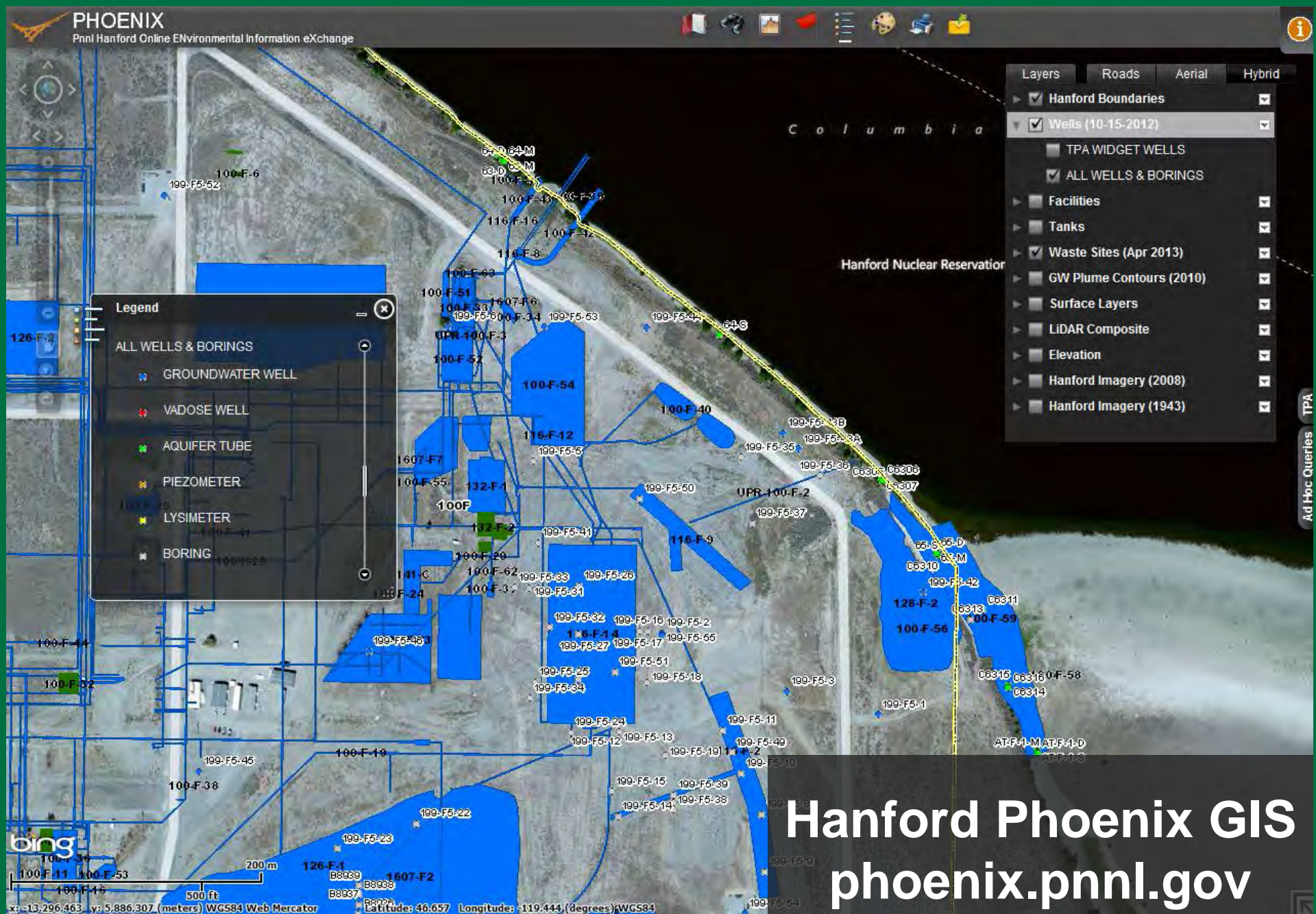
emgis.oro.doe.gov

Layers Roads Aerial Hybrid

- Hanford Boundaries
- Wells (10-15-2012)
 - TPA WIDGET WELLS
 - ALL WELLS & BORINGS
- Facilities
- Tanks
- Waste Sites (Apr 2013)
- GW Plume Contours (2010)
- Surface Layers
- LiDAR Composite
- Elevation
- Hanford Imagery (2008)
- Hanford Imagery (1943)

Legend

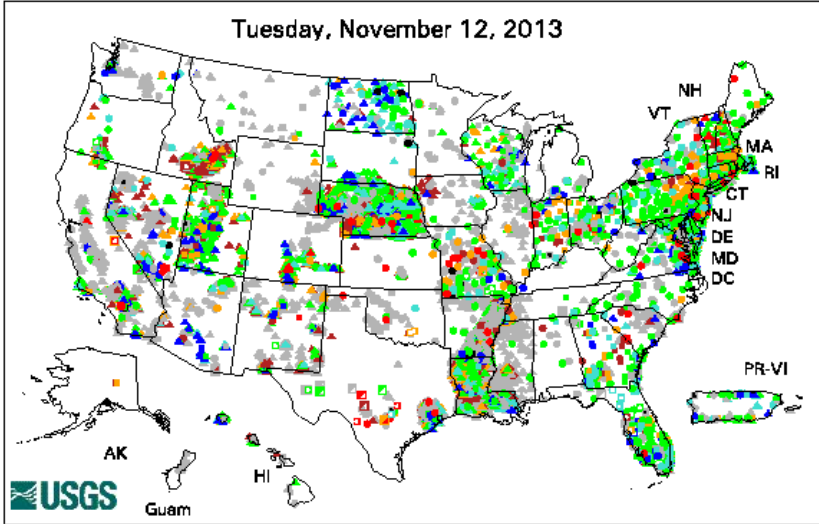
- ALL WELLS & BORINGS
- GROUNDWATER WELL
- VADOSE WELL
- AQUIFER TUBE
- PIEZOMETER
- LYSIMETER
- BORING



Hanford Phoenix GIS
phoenix.pnnl.gov

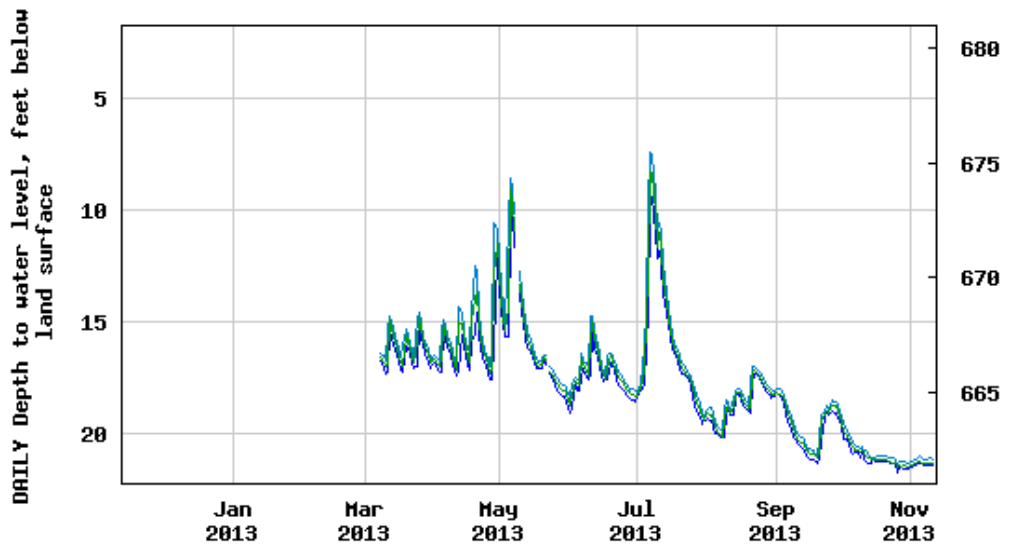
Active Groundwater Level Network

Tuesday, November 12, 2013



Explanation - Percentile classes (symbol color based on most recent measurement)							Wells		Springs	
● Low	● <10 Much Below Normal	● 10-24 Below Normal	● 25-75 Normal	● 76-90 Above Normal	● >90 Much Above Normal	● High	● Not Ranked	○ Real-Time	□ Continuous	△ Periodic Measurements

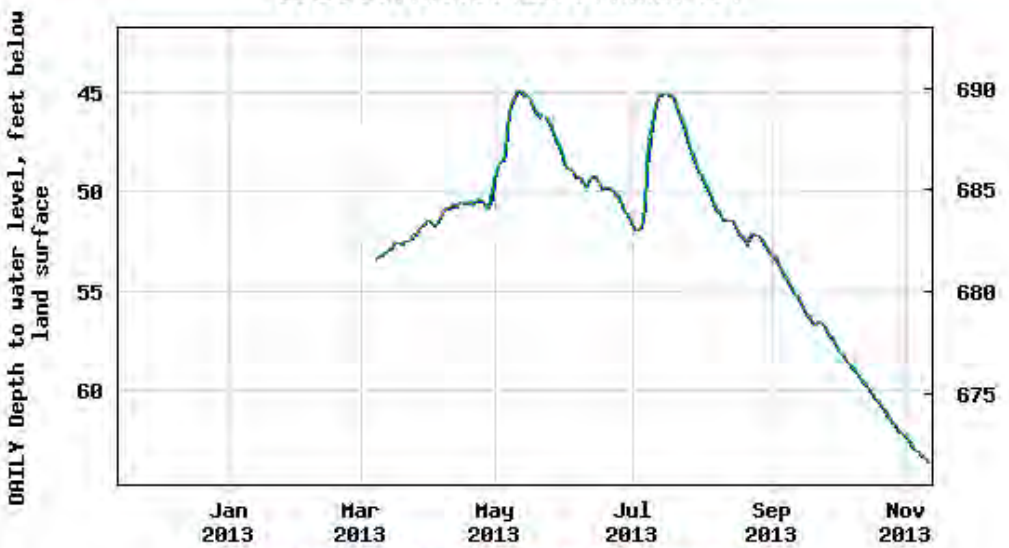
USGS 351248085131601 Hm:N-057



----- Provisional Data Subject to Revision -----

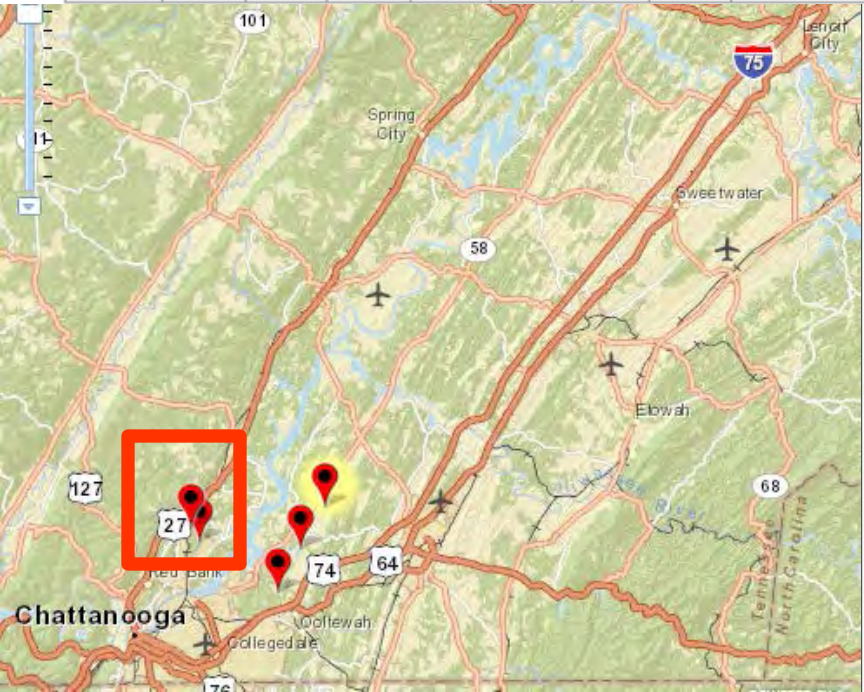
— Daily maximum depth to water level — Daily mean depth to water level
 — Daily minimum depth to water level

USGS 351146085122701 Hm:N-051



----- Provisional Data Subject to Revision -----

— Daily maximum depth to water level — Daily mean depth to water level
 — Daily minimum depth to water level



Take Home Messages

- **With the exception of a low VOC detection in one sample in one well in 2010, no results for known DOE contaminants in off-site wells across the Clinch River from Melton Valley have exceeded Safe Drinking Water Act (SDWA) maximum contaminant levels (MCLs).**
- **This VOC was not detected in subsequent samples from the same well.**

Take Home Messages

- **Consensus that off-site migration via deep paths is plausible, may have occurred in the past, and deserves further investigation.**
- **ORSSAB could consider recommending that DOE proceed with the Off-site Groundwater Quality Assessment project.**

Outline

- Strategy Highlights
- Off-site Groundwater Quality Assessment Project
- **ORR Groundwater Program**
- Plume Rankings
- Off-site Groundwater Use
- Discussion

ORR Groundwater Strategy

Near-term Steps (cont.)

Set up an ongoing ORR Groundwater Program based in the Water Resources Restoration Program (WRRP).

- To improve long-term planning, the Program will develop project scopes for consideration and prioritization.
- Selected projects (e.g., investigation, modeling, technology development support) will be integrated with WRRP monitoring to optimize resources.
- The program will provide flexibility to adapt based on investigation findings, cleanup progress, and budgets.
- Project prioritization and resource allocation will follow FFA and EM program budget protocols.
- ORR Groundwater Program findings will be used to:
 - reevaluate and adjust initial plume and project ranking and results
 - identify interim measures that may be warranted
 - support future groundwater decisions and remediation

Revive state-of-the-art Groundwater Investigation at ORR

- “Many data gaps exist because little groundwater investigation work has been done since the 1990s . . . Groundwater investigation, groundwater modeling, and technology development . . will improve understanding of plume sources and migration . . .”

Source: Sep 2013 ORR Groundwater Strategy D1, V. 1, p. ES-2
(DOE/OR/01-2628/V1&D1)

Environmental Sciences Division

STATUS REPORT ON THE GEOLOGY OF THE OAK RIDGE RESERVATION

Robert D. Hatcher, Jr.¹
Coordinator of Report

Peter J. Lemiszki¹
RaNaye B. Dreier
Richard H. Ketelle²
Richard R. Lee²
David A. Lietzke³
William M. McMaster⁴
James L. Foreman¹
Suk Young Lee

Environmental Sciences Division
Publication No. 3860

¹Department of Geological Sciences, The University of Tennessee, Knoxville 37996-1410

²Energy Division, ORNL

³Route 3, Rutledge, Tennessee 37861

⁴1400 W. Raccoon Valley Road, Heiskell, Tennessee 37754

Geology
1992

Date Published—October 1992

ENVIRONMENTAL SCIENCES DIVISION

STATUS REPORT

**A HYDROLOGIC FRAMEWORK FOR THE
OAK RIDGE RESERVATION**

D. K. Solomon, G. K. Moore,¹ L. E. Toran, R. B. Dreier, and W. M. McMaster¹

Environmental Sciences Division
Publication No. 3815

¹Department of Civil Engineering, The University of Tennessee, Knoxville.

ENERGY SYSTEMS OAK RIDGE HYDROLOGY SUPPORT PROGRAM
(Activity No. 26 45 02 00 0)

Hydrology
1992

May 1992

Prepared for the
Energy Systems Groundwater Program Office

Prepared by the
OAK RIDGE NATIONAL LABORATORY
Oak Ridge, Tennessee 37831

Gain / Losing Streams 1994

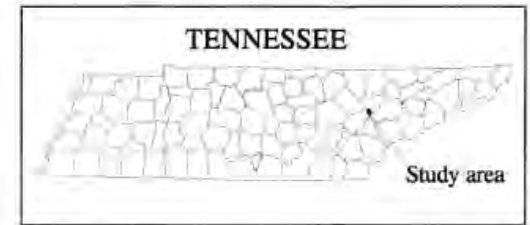
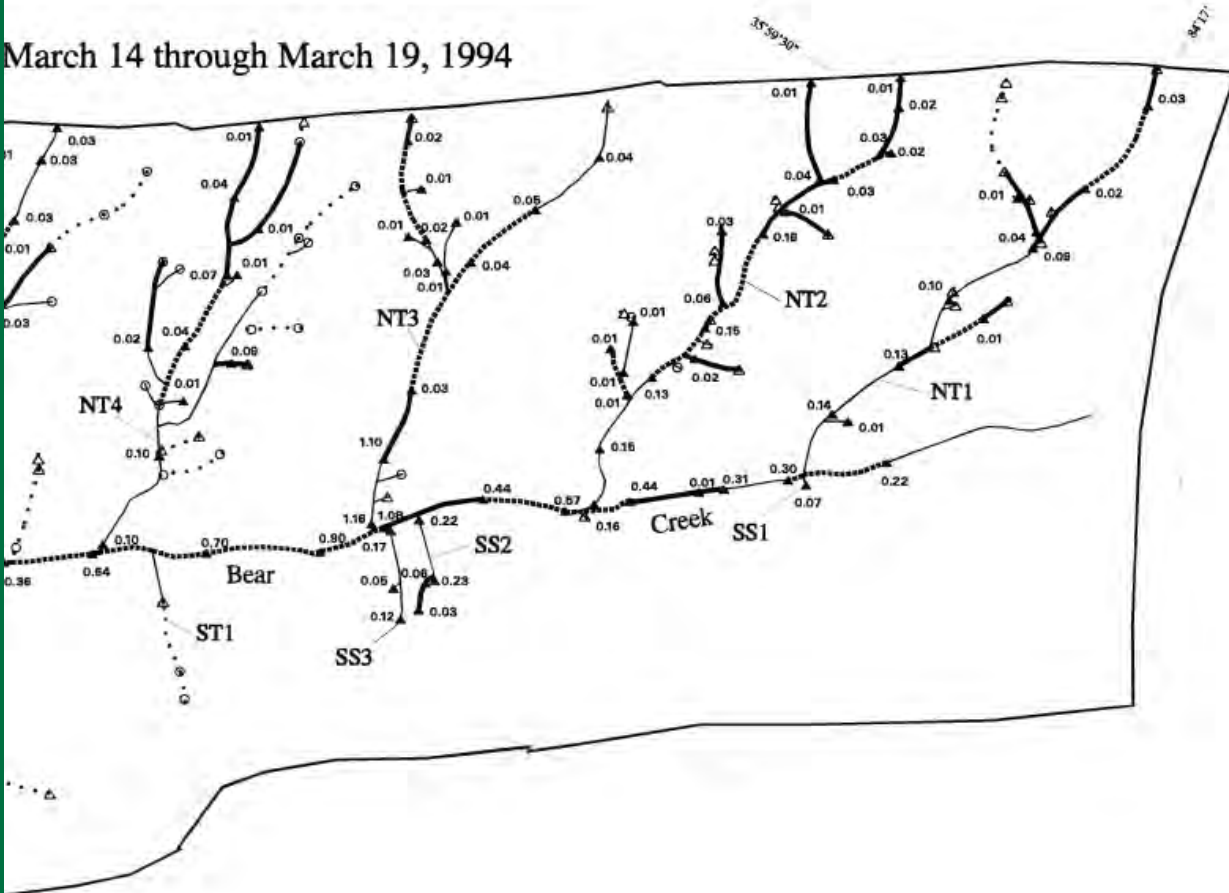
PREPARED IN COOPERATION WITH THE
UNITED STATES DEPARTMENT OF ENERGY

OPEN FILE REPORT 96-557

Stream reach map-PLATE 1

Robinson, J. A., and Mitchell, R.L., III, 1996, Gaining, Losing,
and dry stream reaches at Bear Creek Valley, Oak Ridge, Tennessee,
March and September 1994

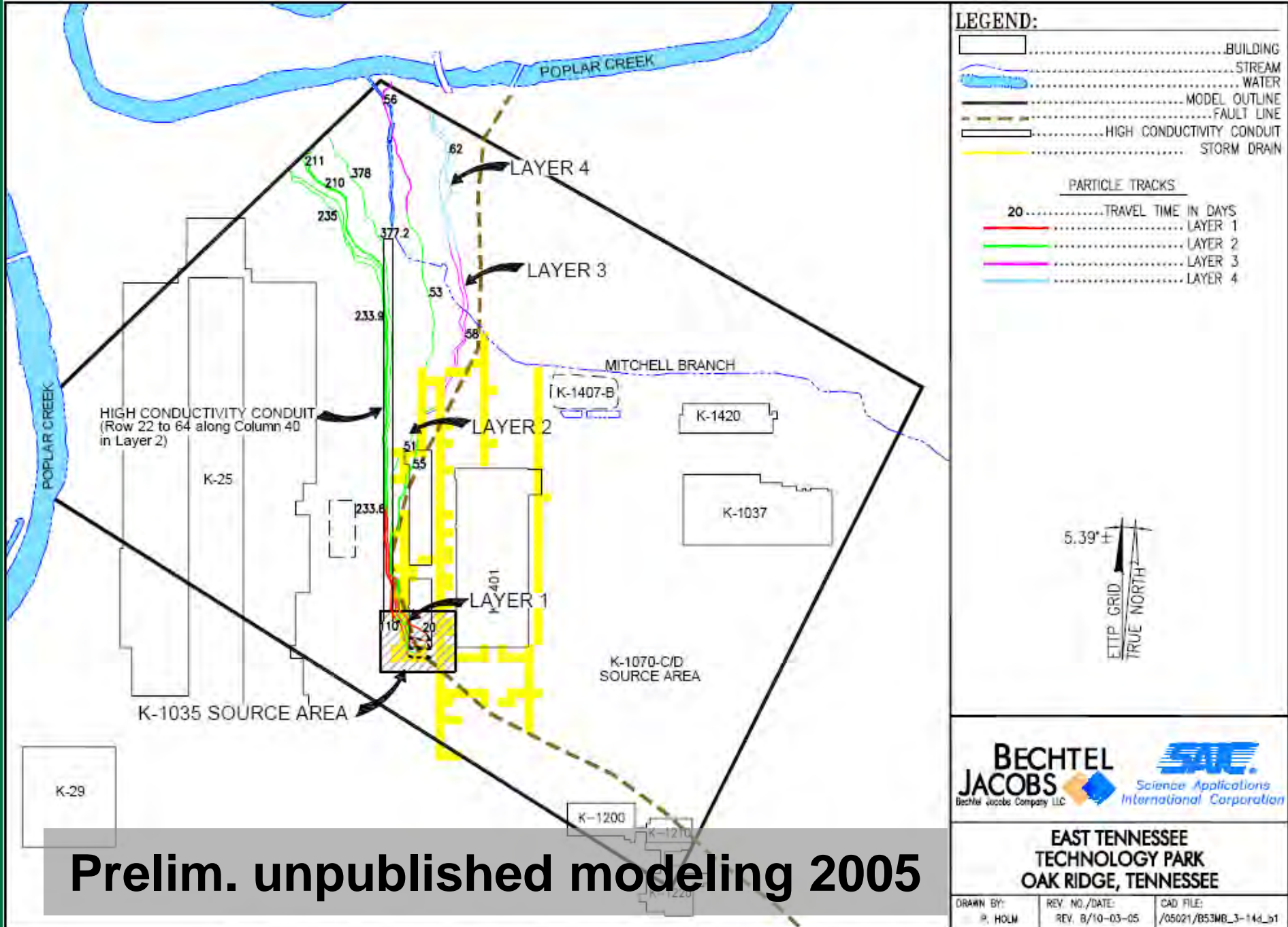
March 14 through March 19, 1994



EXPLANATION

STREAM CLASSIFICATION

- GAINING FLOW
- LOSING FLOW
- DRY REACH



Prelim. unpublished modeling 2005



**EAST TENNESSEE
TECHNOLOGY PARK
OAK RIDGE, TENNESSEE**

DRAWN BY: P. HOLM	REV. NO./DATE: REV. 8/10-03-05	CAD FILE: /05021/B53MB_3-14d_b1
----------------------	-----------------------------------	------------------------------------

Fig. 3.28. Tracks of particles released in Layer 1 from K-1035 area under sump-on condition for the assumed discrete high conductivity conduit in Layer 2.

Estimating Reaction Rate Coefficients Within a Travel-Time Modeling Framework

by R. Gong¹, C. Lu¹, W.-M. Wu², H. Cheng², B. Gu³, D. Watson³, P.M. Jardine³, S.C. Brooks³, C.S. Criddle², P.K. Kitanidis², and J. Luo^{1,4}

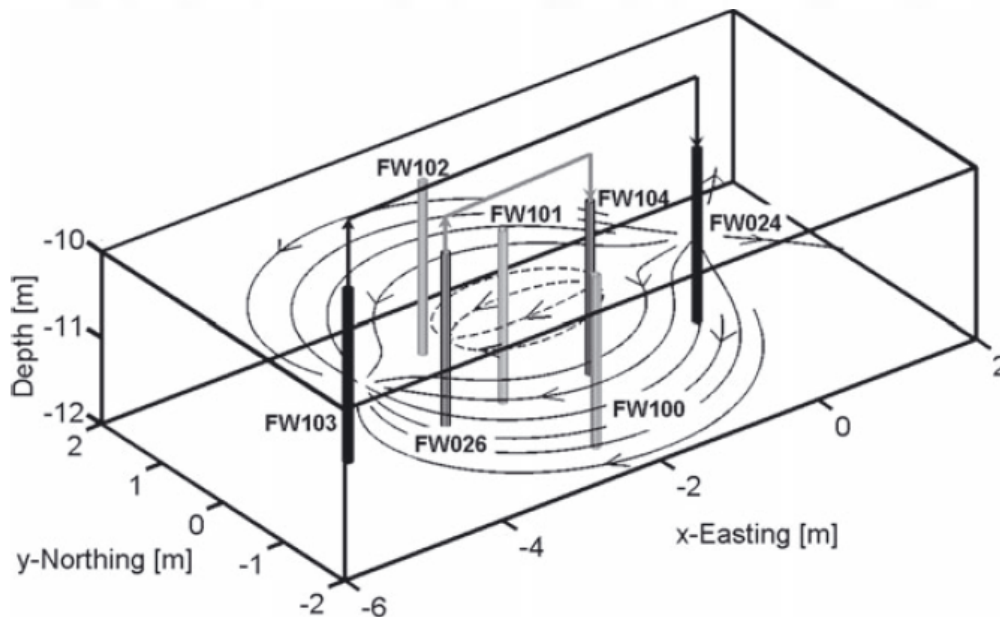


Figure 1. The multiple-well system installed at Oak Ridge, Tennessee, for in situ remediation of U(VI)-contaminated groundwater. The well system includes two injection (FW024 and FW104) and two extraction wells (FW026 and FW103), and three MLS wells. The dashed lines with arrows indicating flow directions are the streamlines within the nested inner cell, and the solid lines are the streamlines in the outer flow cell.

2011
Ga. Tech,
Stanford,
ORNL,
DOE-
funded



Mercury in Water Science at Oak Ridge

- Home
- Environmental Remediation
- Site Specific Problem
- Approach
- Current Progress
- Related Websites
- Documents
- Publications and Presentations
- Expertise
- Contacts

Applied Field Research Initiative Remediation of Mercury and Indu

Research Staff

Expertise/Bio	Name	Email
Geochemistry	Eric Pierce	pierceem@ornl.gov
Environmental Chemistry	Liyuan Liang	liangl@ornl.gov
Hydrogeology	Dave Watson	watsondb@ornl.gov
Aquatic Ecology	Mark Peterson	petersonmj@ornl.gov
Environmental Chemistry	Carrie Miller	millercl@ornl.gov
Environmental Engineering	Feng He	hef2@ornl.gov
Field Research	Ken Lowe	LoweKa@ornl.gov
Soil Science	Brian Lester	Lesterbp@ornl.gov
Geographical Information Systems	Sally Mueller	muellerma@ornl.gov

Collaborators

Elizabeth Phillips, DOE Oak Ridge Operation

Terry Cothron, Y-12 BWXT

Dick Kettelle

Bob Alexander, Tennessee Department of Environment and Conservation

Brian Looney and Carol Eddy-Dilek, SRNL

Ralph Turner

George Southworth and Maryanna Bogle, Retired from ORNL

Scott Brooks, Baohua Gu, Dwayne Elias, Anthony Palumbo and Terry Mathews

Groundwater Modeling – A tool for data analysis & decision making

- “Groundwater modeling will play an instrumental role in the CERCLA RI/FS process in coming years, and for some of the more complex decisions, it may play a role in the long-term monitoring (LTM) phase of CERCLA implementation.”

Source: Sep 2013 ORR Groundwater Strategy D1, V. 1, p. 5-12
(DOE/OR/01-2628/V1&D1)

Groundwater Modeling – A tool for data analysis & decision making

- No further action on residual sources
- Monitored Natural Attenuation (MNA)
- Technical Impracticability (TI) waivers
- Design of active remediation (e.g. well rates & locations)
- Optimization of monitoring programs
- ORR-wide regional flow model needed

Source: Sep 2013 ORR Groundwater Strategy D1, V. 1, p. 5-12
(DOE/OR/01-2628/V1&D1)

Take Home Messages

- DOE effort since early 1990s has focused on remediation and monitoring
- Scientific advances in characterization and modeling in last 20 yrs.
- ORSSAB could consider recommending that DOE secure additional baseline funding for interpretive analysis, including modeling, to obtain maximum benefit of monitoring data and other information

Take Home Messages

- **ORSSAB could consider recommending that DOE broaden the technical support team beyond site contractors to include academic and government experts, akin to the scientific groundwater program at Oak Ridge prior to 1993. Such an approach seems to be underway with respect to Mercury at ORR.**

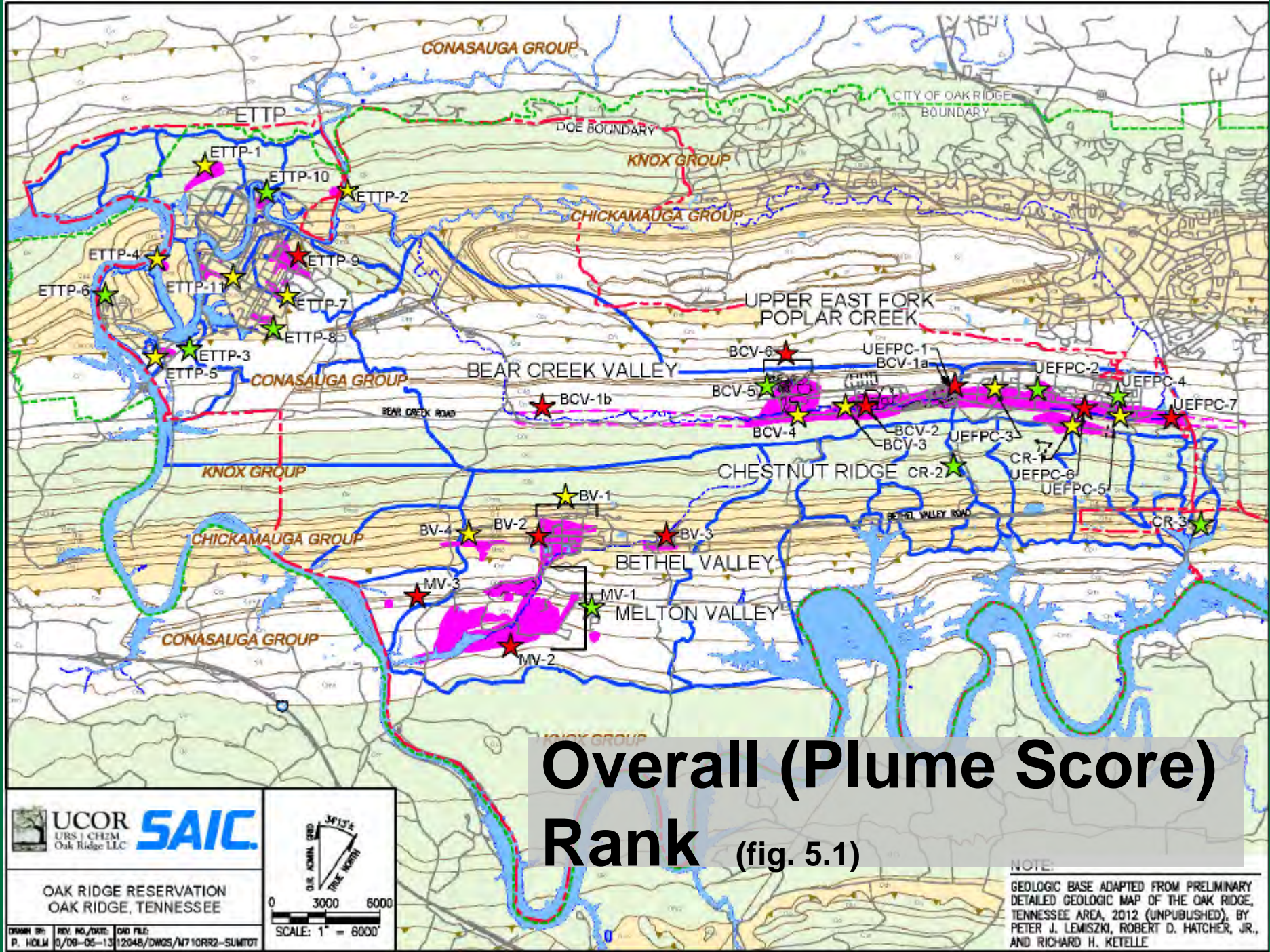
Outline

- Strategy Highlights
- Off-site Groundwater Quality Assessment Project
- ORR Groundwater Program
- Plume Rankings
- Off-site Groundwater Use
- Discussion

Plume Rankings

- **Pathway Score =**
Pathway (0-10) + Receptor (0-10)
- **Plume Score = Pathway Score + Hazard Score**
- **Hazard Score = 0.57 x [Toxicity (0-15) +**
Area (0-10) + Longevity (0-10)]
- **Hazard Score weighted by 0.57 = (20/35) to**
equalize values with Pathway Score
- **Table sorted by Pathway Score (not Plume**
Score)

Source: Sep 2013 ORR Groundwater Strategy D1, V. 1, section 5.1.3
(DOE/OR/01-2628/V1&D1)

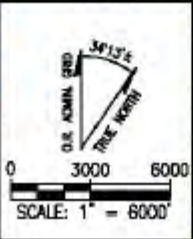


Overall (Plume Score) Rank (fig. 5.1)

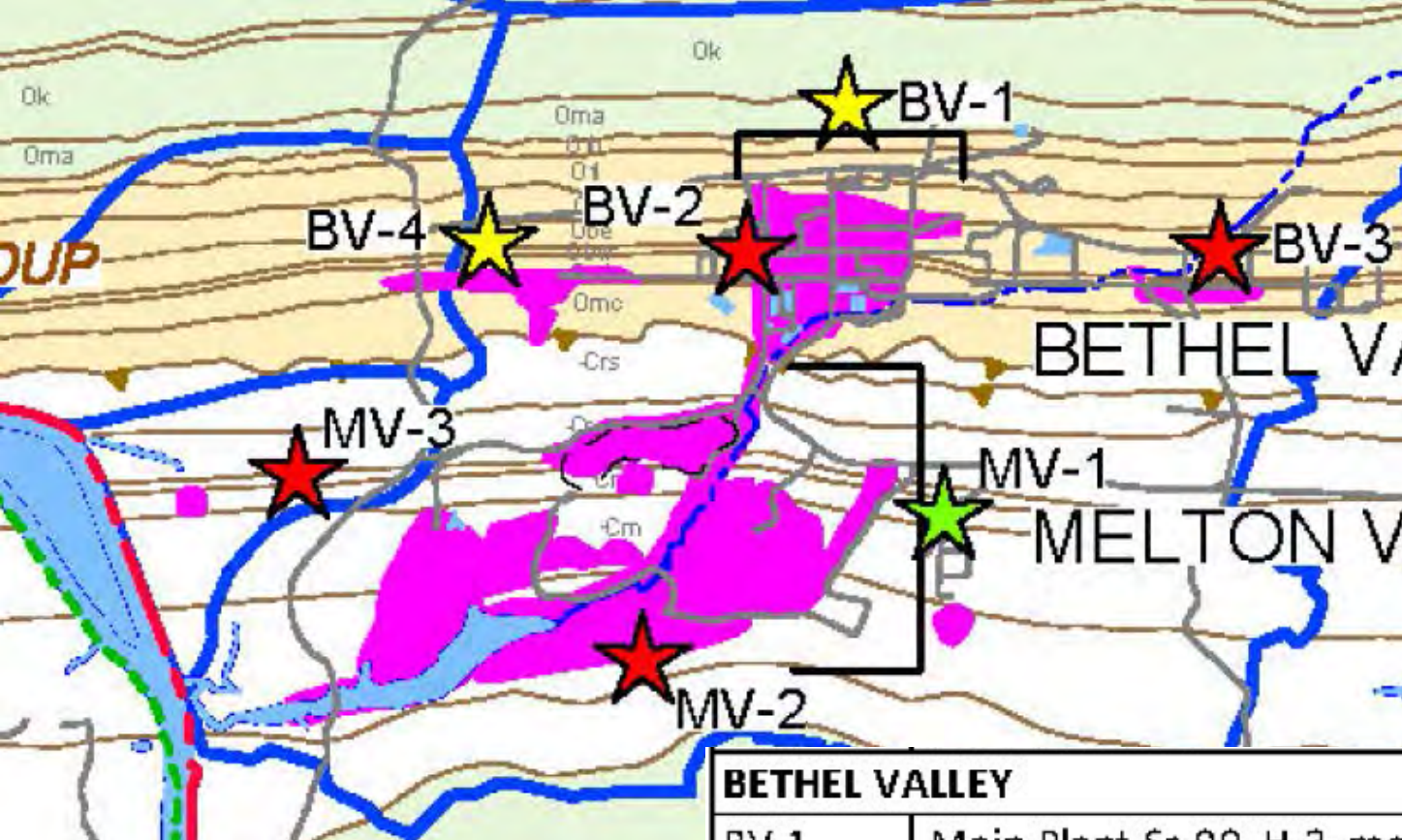


OAK RIDGE RESERVATION
OAK RIDGE, TENNESSEE

DRAWN BY: REV. NO./DATE: DWG FILE:
P. HOLM 0/08-05-13 12048/DWGS/W710RR2-SUMTOT



NOTE:
GEOLOGIC BASE ADAPTED FROM PRELIMINARY
DETAILED GEOLOGIC MAP OF THE OAK RIDGE,
TENNESSEE AREA, 2012 (UNPUBLISHED), BY
PETER J. LEMISZKI, ROBERT D. HATCHER, JR.,
AND RICHARD H. KETELLE



Overall Rank (Plume Score)

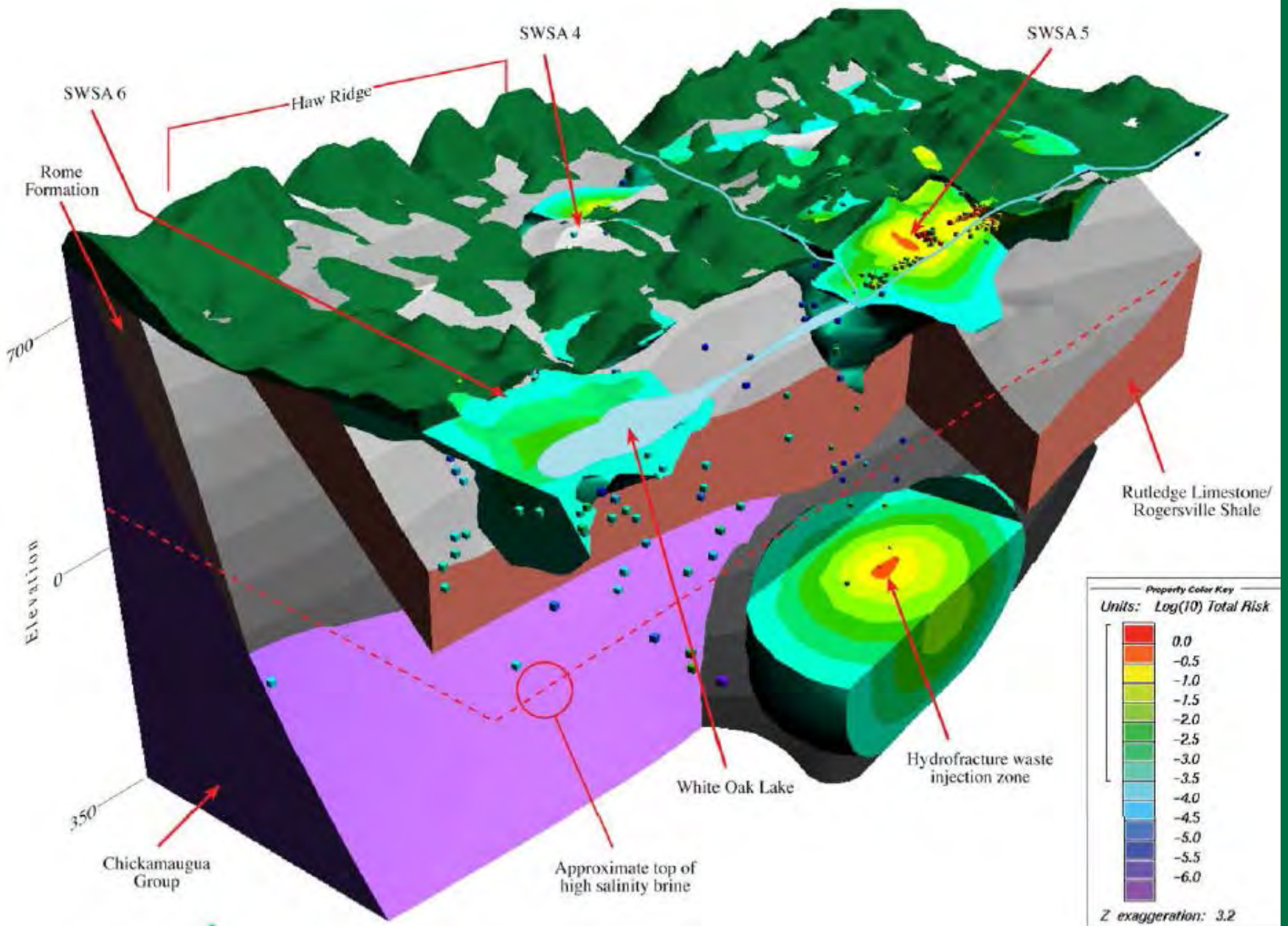
(fig. 5.1)

BETHEL VALLEY

BV-1	Main Plant Sr-90, H-3, mercury
BV-2	Corehole 8, Sr-90, U, Cs-137
BV-3	7000 Area VOC Plume
BV-4	SWSA 3 Sr-90

MELTON VALLEY

MV-1	Shallow Groundwater Contamination emanating from buried waste operations overlying the Conasuga Group formations
MV-2	Hydrofracture Sites
MV-3	Exit Pathway/Picket Wells



Source: DOE 1997a

HydroFracture

G13-0032_WOC - silicon

Fig. G.22. Hydrofracture waste injection zone showing relationship to other MV waste units, geology and associated risk.

Take Home Messages

- Team used an explicit multi-step process to rank plumes. However, any ranking process is unavoidably subjective. Final Rankings heavily weight the Pathway Score.
- ORSSAB could consider recommending that DOE adopt the plume rankings for management of site-wide groundwater remediation.

Take Home Messages

- Hydrofracture disposal has highest Overall Plume score (31), but Pathway score 0.5 points below “High” rank.
- ORSSAB could consider recommending that DOE collect, review, and archive records associated with hydrofracture disposal to support long-term stewardship.
- Can experience at ORR inform national debate on hydraulic fracturing?

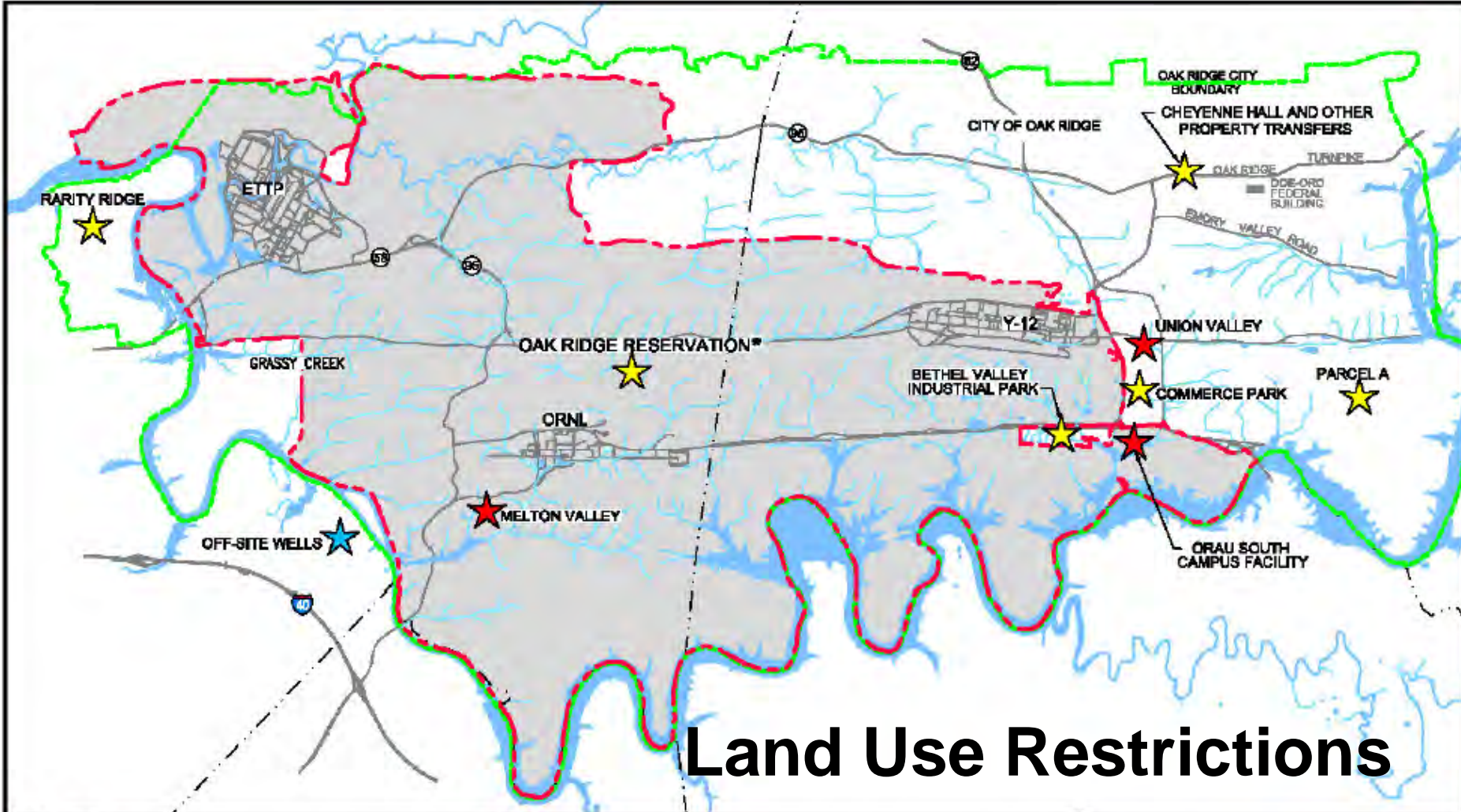
Outline

- Strategy Highlights
- Off-site Groundwater Quality Assessment Project
- ORR Groundwater Program
- Plume and Project Rankings
- Off-site Groundwater Use
- Discussion

Recommendation 4: Off-site Groundwater Use

- “Utilizing a portion of the annual funding to be budgeted for the ORR Groundwater Program, continue to evaluate and track groundwater use at properties adjacent to and downgradient of the ORR. Set up a DOE interface with TDEC to allow DOE to be notified of new well installation activity. If potential unacceptable risk is identified, consider additional groundwater use restrictions/policies for interim protectiveness until final decisions are reached.”

Source: Sep 2013 ORR Groundwater Strategy D1, V. 1, p. 7-2
(DOE/OR/01-2628/V1&D1)



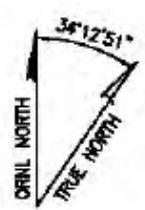
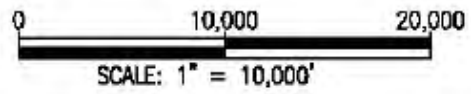
Land Use Restrictions

LEGEND:

- STREAMS
- CITY OF OAK RIDGE BOUNDARY
- OAK RIDGE RESERVATION
- GROUNDWATER USE RESTRICTION AREA
- GROUNDWATER USE RESTRICTIONS SPECIFIED BY CERCLA ROD AND POST-ROD DOCUMENTS
- LICENSE AGREEMENTS WITH PROPERTY OWNERS LIMIT GROUNDWATER USE

NOTE:

*MULTIPLE PROPERTY TRANSFERS ON THE OAK RIDGE RESERVATION INCLUDE GROUNDWATER USE RESTRICTIONS (CLEAN PARCEL DETERMINATIONS AND COVENANT DEFERRALS)



UCOR
URS | CH2M
Oak Ridge LLC

SAIC

**OAK RIDGE RESERVATION
OAK RIDGE, TENNESSEE**

DRAWN BY: P. HOLM	REV. NO./DATE: REV. 0/08-08-13	CAD FILE: 12048/DMSS/M71ORR_LU-USE
----------------------	-----------------------------------	---------------------------------------

Fig. 5.3. Areas with groundwater use restrictions on and around the ORR.

Outline

- Strategy Highlights
- Off-site Groundwater Quality Assessment Project
- ORR Groundwater Program
- Plume and Project Rankings
- Off-site Groundwater Use
- Discussion