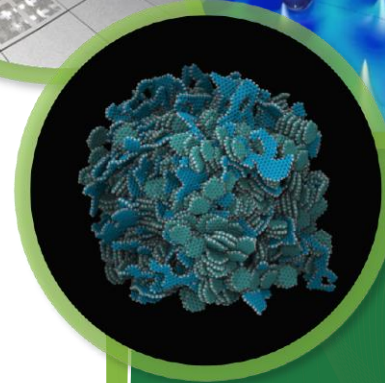
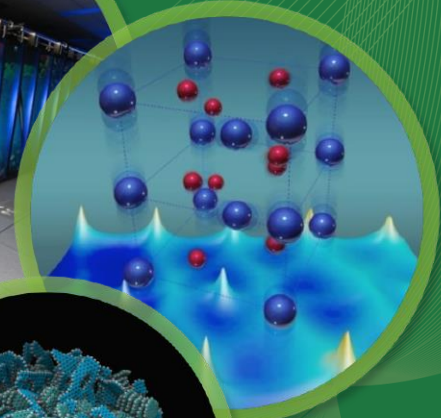


EnPI 5.0

Install and Uninstall Instructions



Installation Instructions

- The latest version of the EnPI Tool has been developed as an Excel Add-In and needs to be installed to run.
- Once installed, an “EnPI” tab will appear at the top of any Excel workbook.
- The installation method does not vary for users with Windows 7 or later, but some screens make look different.

Download and Save to Computer

- Downloading from
 - <https://energy.gov/eere/amo/articles/energy-performance-indicator-tool>
 - <https://github.com/ORNL-AMO/EnPI/releases>
- Choose the proper file for your computer
 - x64 or x86
- Save the Setup (.msi) file to your computer
- Open the Setup (.msi) file

If Windows Defender triggers...

Windows protected your PC

Windows Defender SmartScreen prevented an unrecognized app from starting. Running this app might put your PC at risk.

[More info](#)

Don't run

1. Click "More Info"

Windows protected your PC

Windows Defender SmartScreen prevented an unrecognized app from starting. Running this app might put your PC at risk.

App: Setup.msi

Publisher: Unknown publisher

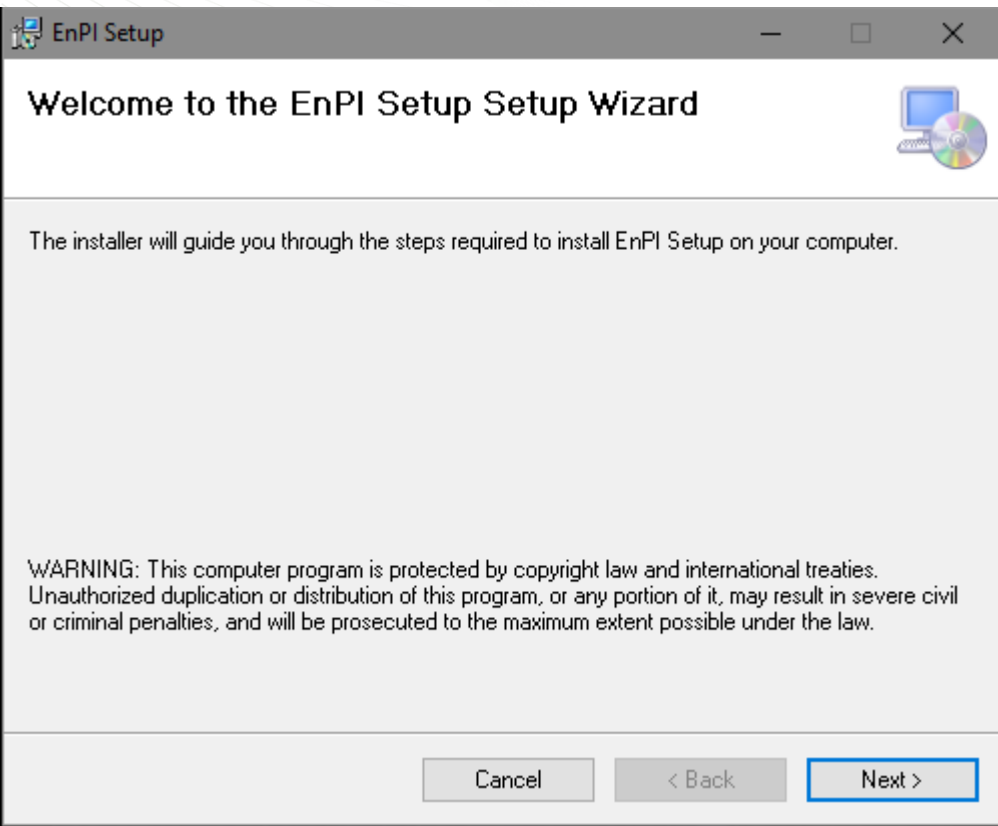
Run anyway

Don't run

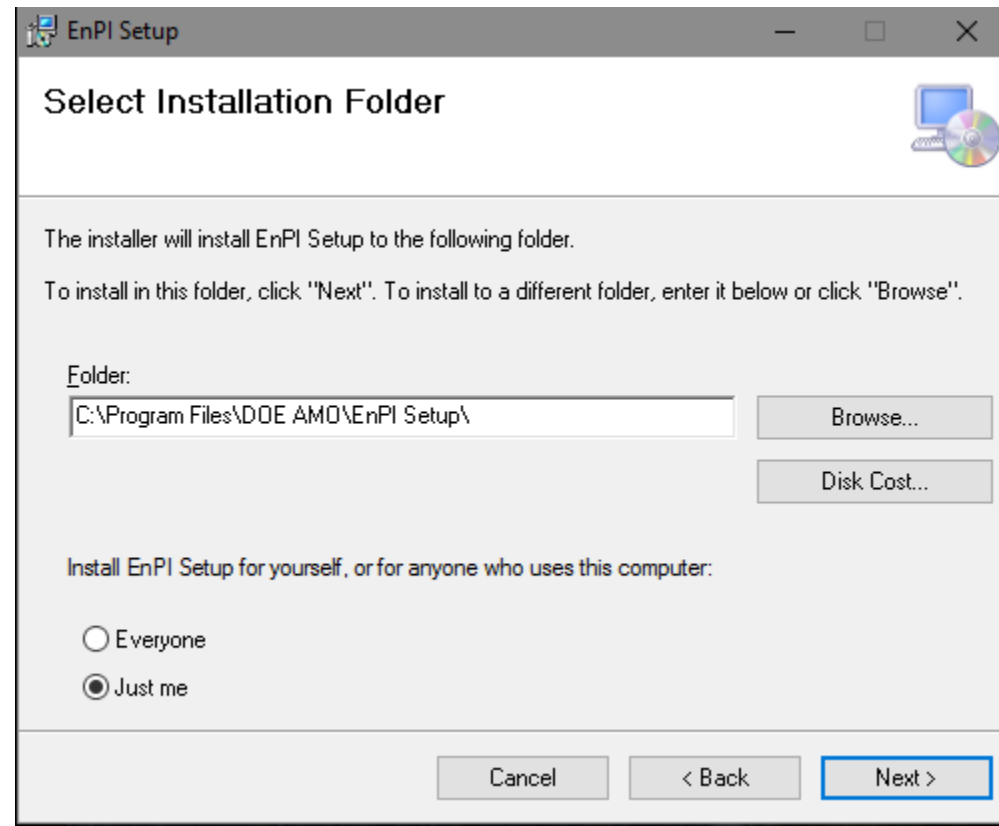
2. Click "Run Anyway"

Follow the instructions in the Setup Wizard

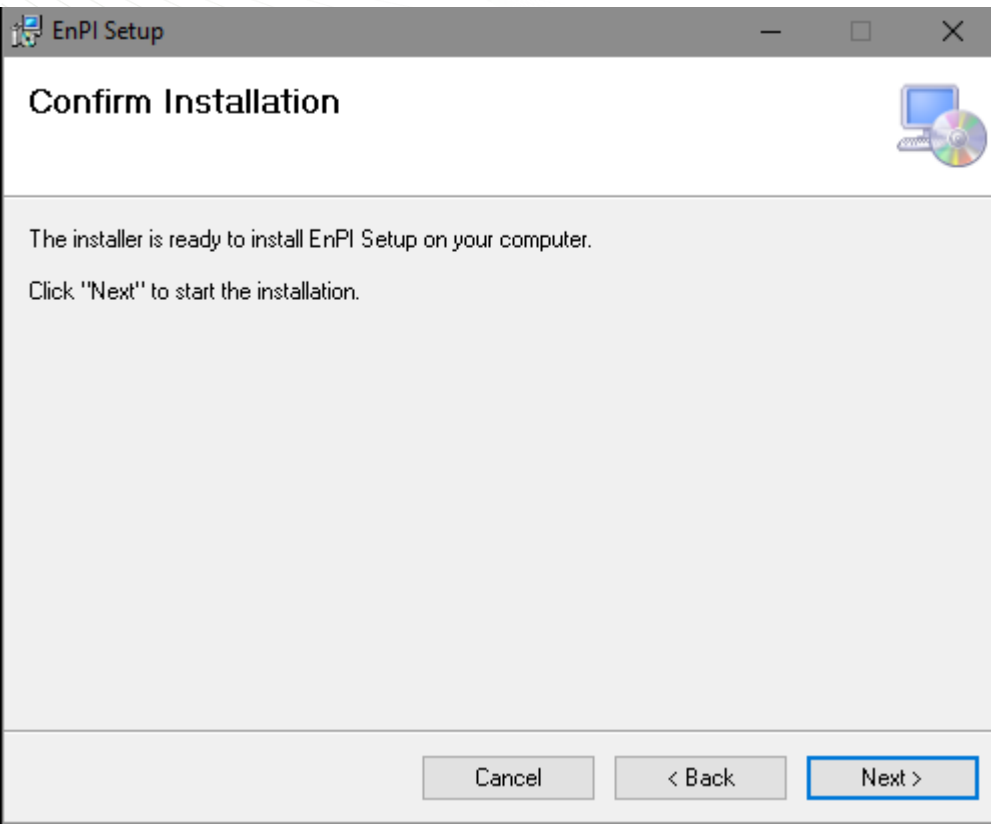
1. Click "Next"



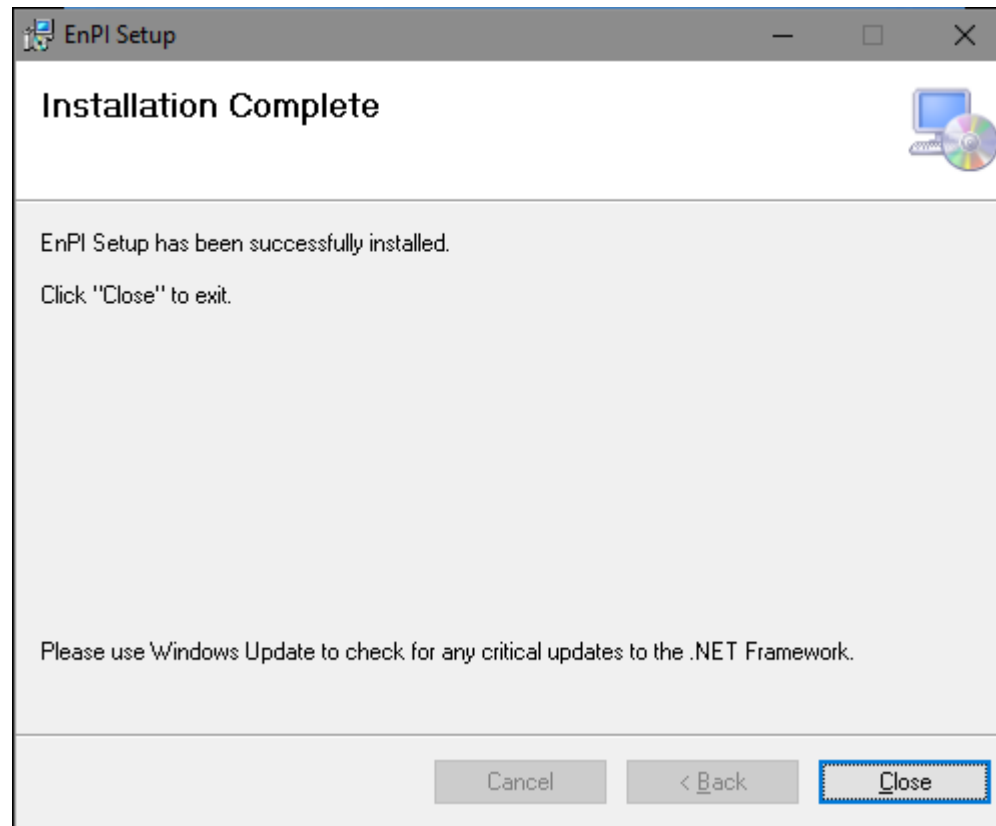
2. Click "Next"



3. Click "Next"

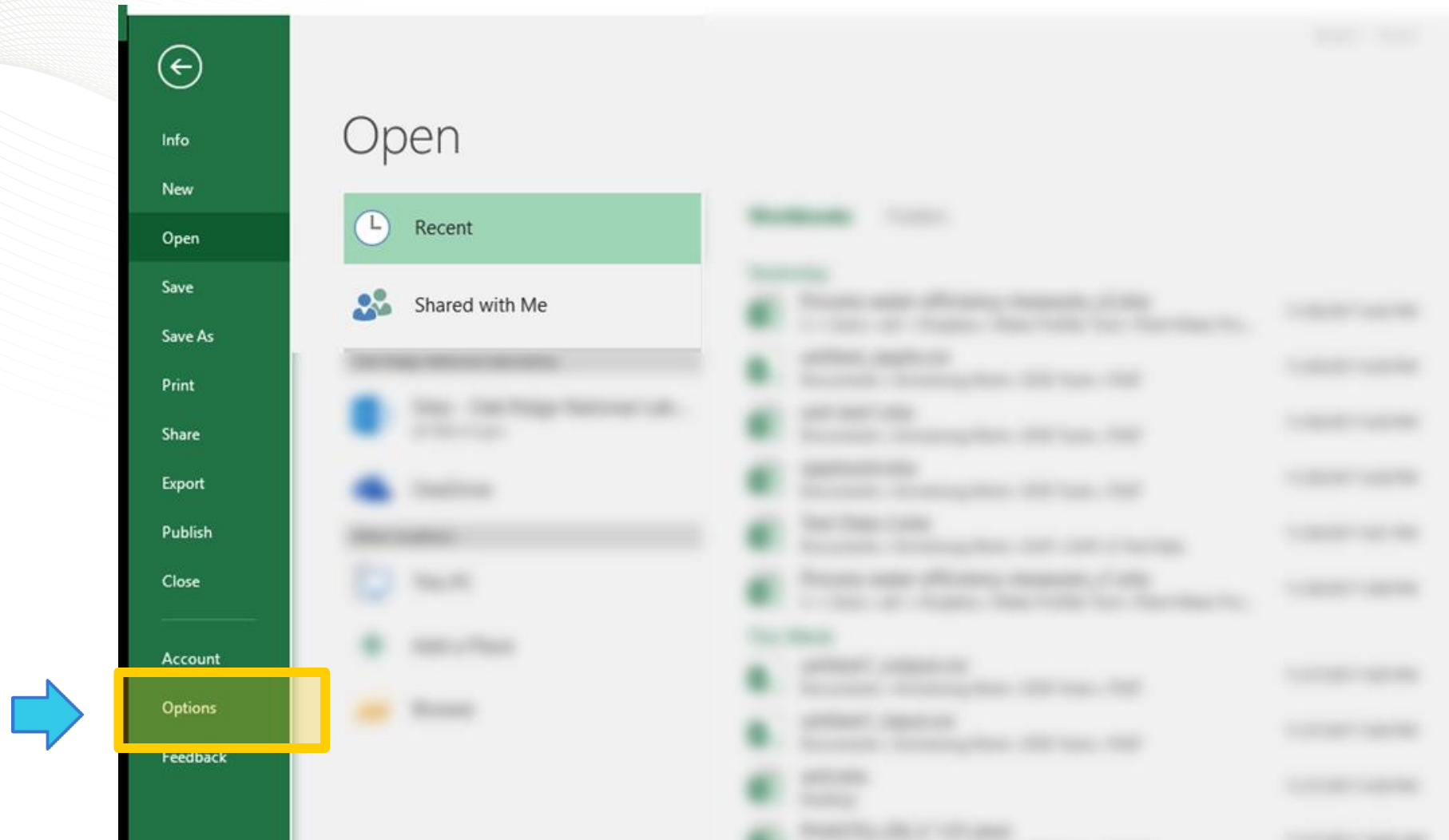


4. Click "Close"



If EnPI is not showing up in your Excel Toolbar

1. Open Excel
2. Click "Options"



3. Click "Add-ins"



Excel Options

General options for working with Excel.

User Interface options

- Show Mini Toolbar on selection ⓘ
- Show Quick Analysis options on selection
- Enable Live Preview ⓘ

ScreenTip style: Show feature descriptions in ScreenTips

When creating new workbooks

- Use this as the default font: Body Font
- Font size: 11
- Default view for new sheets: Normal View
- Include this many sheets: 1

Personalize your copy of Microsoft Office

- User name: Kristina O. Armstrong
- Always use these values regardless of sign in to Office.
- Office Background: Underwater
- Office Theme: Colorful

Start up options

- Choose the extensions you want Excel to open by default: Default Programs...
- Tell me if Microsoft Excel isn't the default program for viewing and editing spreadsheets.
- Show the Start screen when this application starts

OK Cancel

4. Check that you can see "EnPI Add-in"
5. If not, Select "COM Add-ins" from the "Manage" list and click "Go"

Excel Options

View and manage Microsoft Office Add-ins.

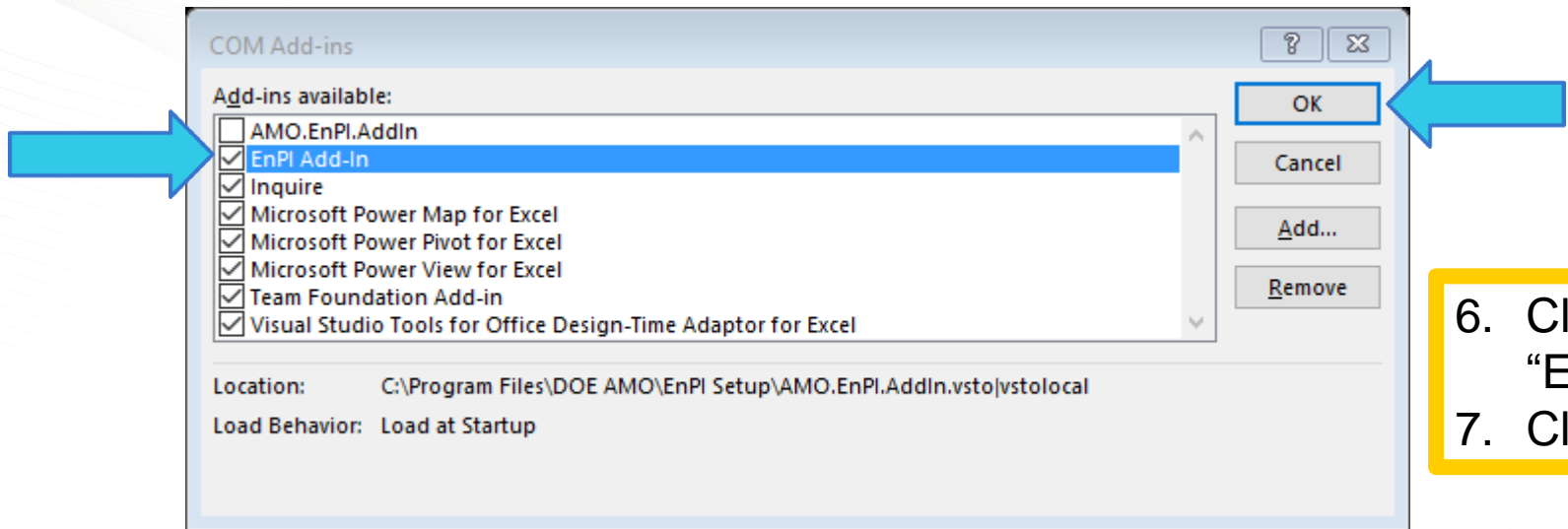
Add-ins

Name ^	Location	Type
Active Application Add-ins		
Analysis ToolPak	C:\...analysis\ANALYS32.XLL	Excel Add-in
Analysis ToolPak - VBA	C:\...lysis\ATPVBAEN.XLAM	Excel Add-in
EnPI Add-In	C:\...PI.AddIn.vsto\vstolocal	COM Add-in
Inquire	C:\...16\DCF\NativeShim.dll	COM Add-in
Microsoft Power Map for Excel	C:\...XCELPLUGINSHELL.DLL	COM Add-in
Microsoft Power Pivot for Excel	C:\...ivotExcelClientAddIn.dll	COM Add-in
Microsoft Power View for Excel	C:\...ReportingExcelClient.dll	COM Add-in
Solver Add-in	C:\...SOLVER\SOLVER.XLAM	Excel Add-in
Team Foundation Add-in	C:\...x86\TFSSOfficeAdd-in.dll	COM Add-in
Visual Studio Tools for Office Design-Time Adaptor for Excel	C:\...6\VSTOExcelAdaptor.dll	COM Add-in
Inactive Application Add-ins		
AMO.EnPI.AddIn	file:///...AddIn.vsto\vstolocal	COM Add-in
Date (XML)	C:\...\Smart Tag\MOFL.DLL	Action
Euro Currency Tools	C:\...rary\EUROTOOL.XLAM	Excel Add-in
Microsoft Actions Pane 3		XML Expansion Pack

Add-in: Analysis ToolPak
Publisher: Microsoft Corporation
Compatibility: No compatibility information available
Location: C:\Program Files (x86)\Microsoft Office\root\Office16\Library\Analysis\ANALYS32.XLL
Description: Provides data analysis tools for statistical and engineering analysis

Manage: COM Add-ins Go...

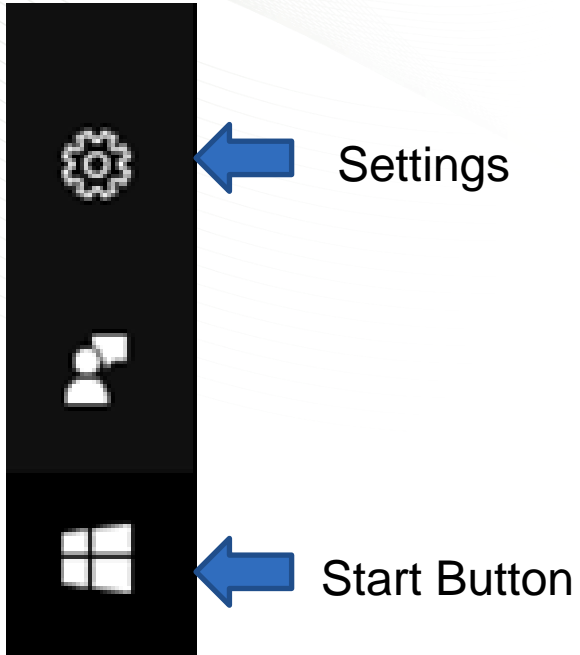
OK Cancel



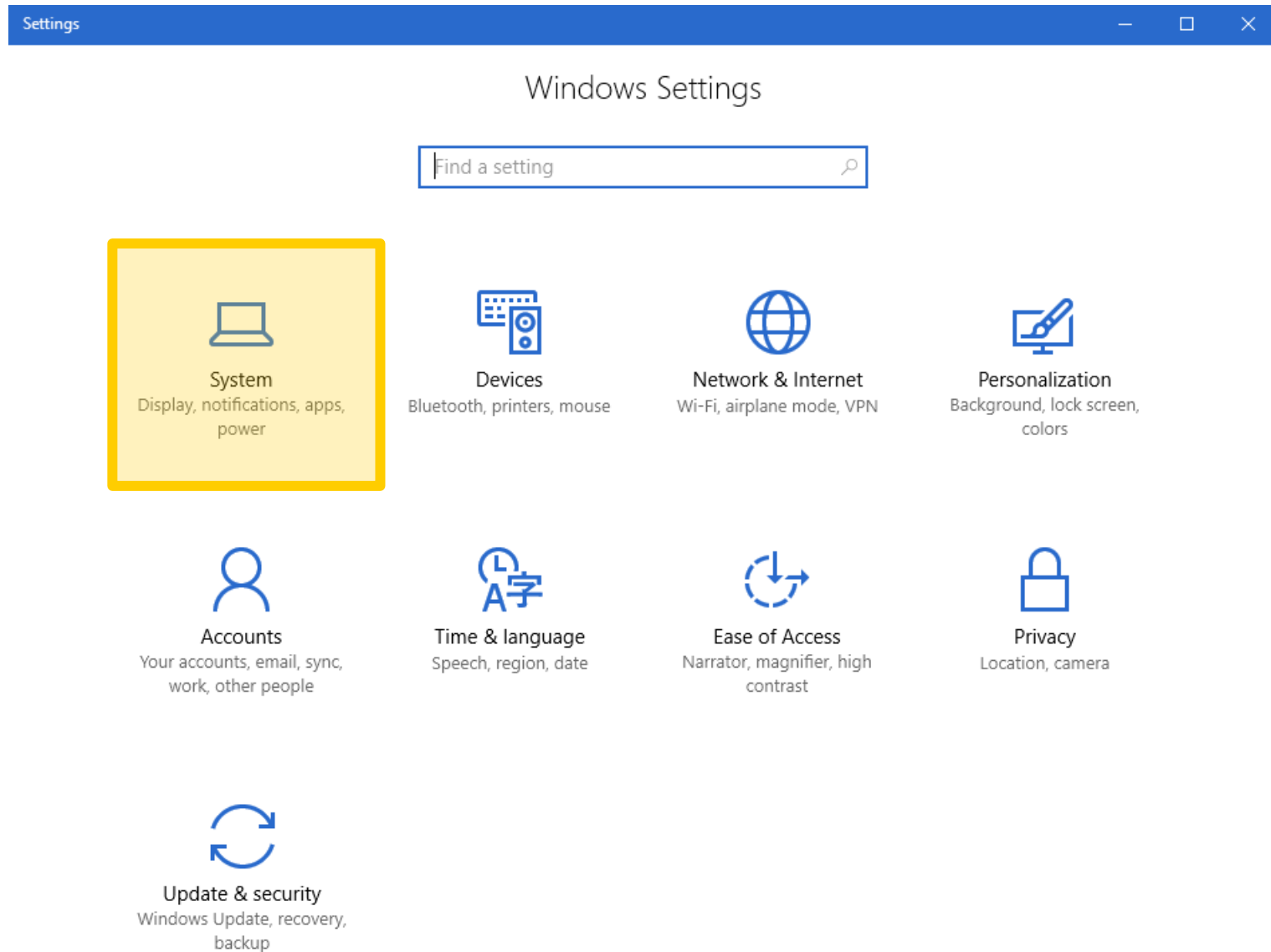
6. Click the checkbox for "EnPI Add-in"
7. Click "OK"

Uninstallation Instructions

Uninstall Via Settings



1. Open your Settings Menu (the Gear Icon) via the Start Button
2. Click "System"



- Home
- Find a setting
- System
 - Display
 - Apps & features**
 - Default apps
 - Notifications & actions
 - Power & sleep
 - Storage
 - Offline maps
 - Tablet mode
 - Multitasking
 - Projecting to this PC
 - Apps for websites
 - About

Apps & features


Manage optional features

Search, sort, and filter by drive. If you would like to uninstall or move an app, select it from the list.

EnPI

Sort by name

Show content from all drives

	EnPI Setup DOE AMO	7.97 MB 10/16/2017	Modify	Uninstall
---	-----------------------	-----------------------	--------	-----------

Related settings

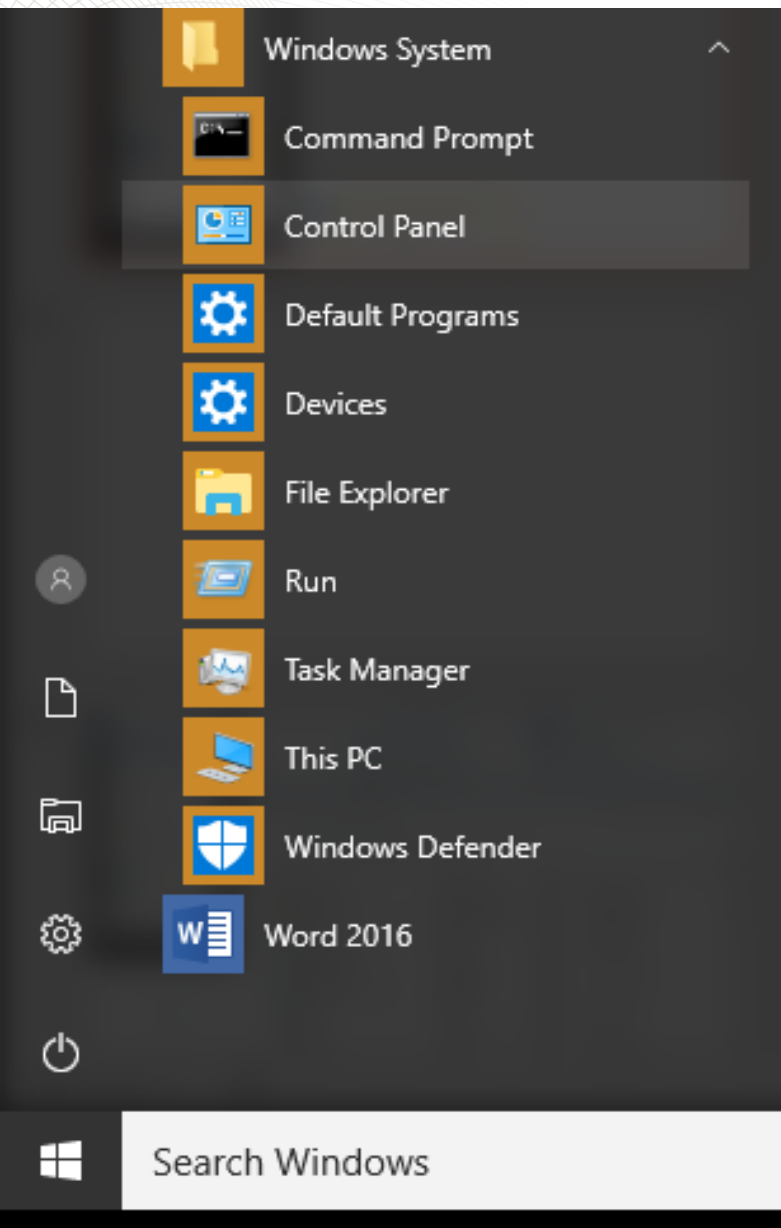
Programs and Features

3. On the far left, Click "Apps & features"

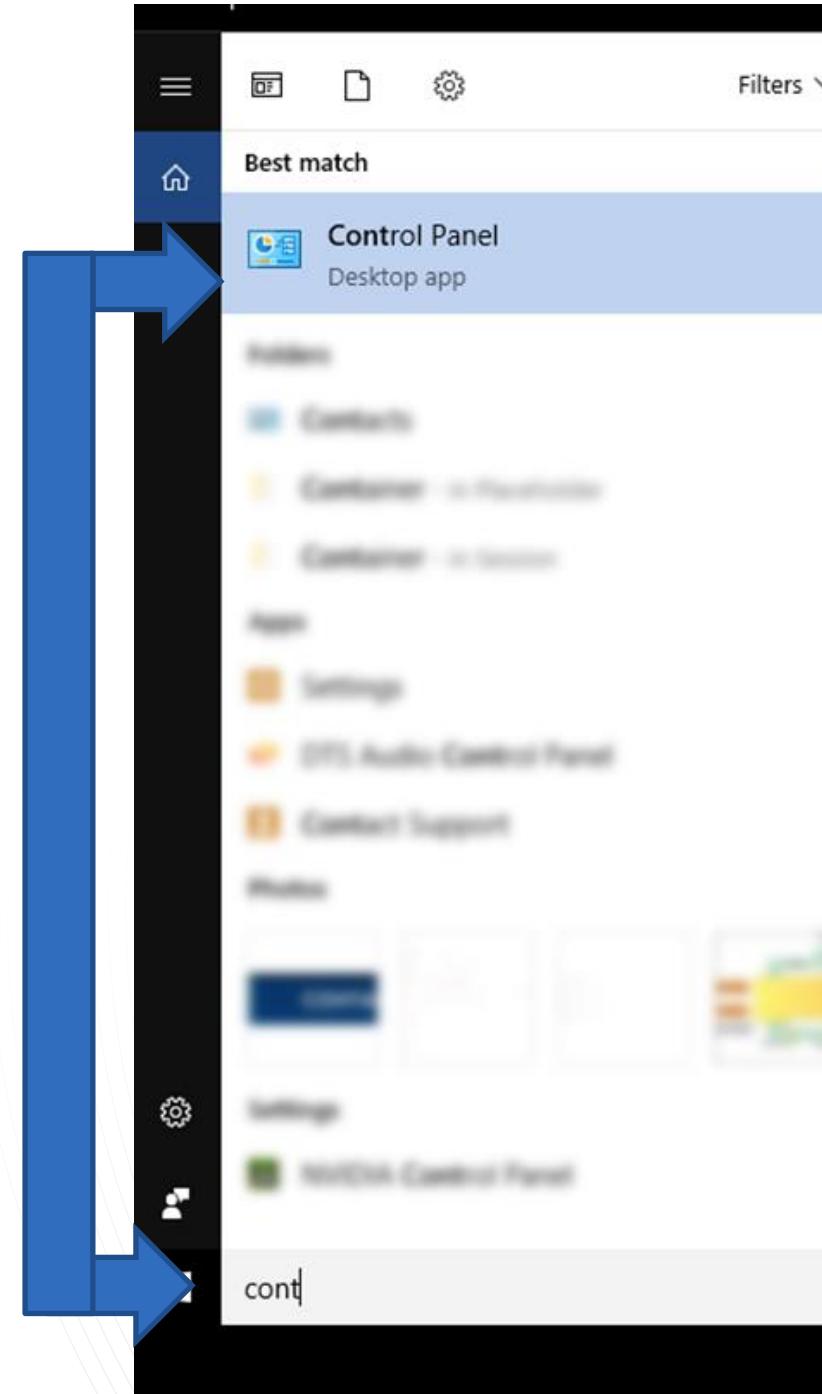
4. Search for "EnPI"

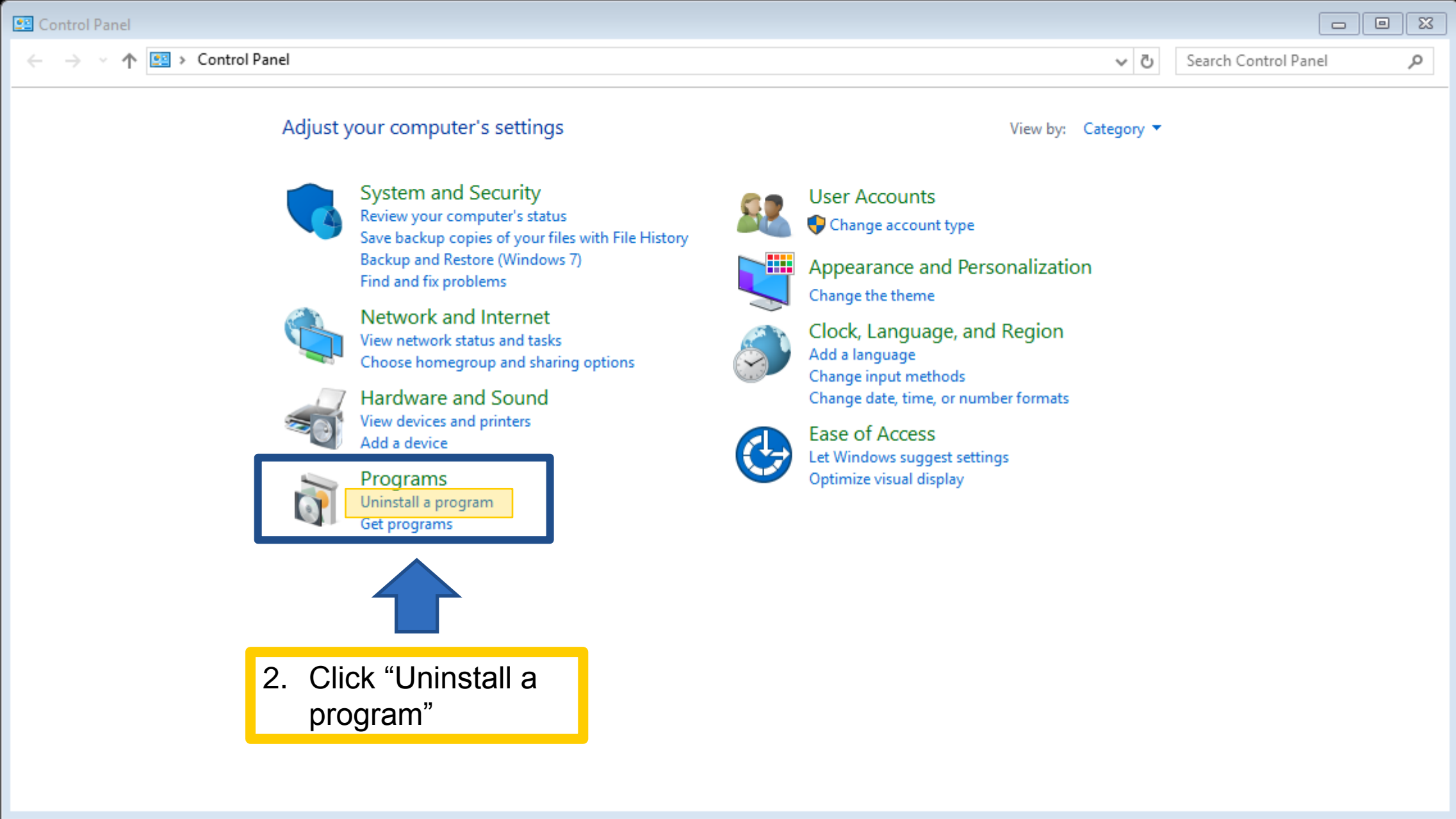
5. Click "Uninstall"

Uninstall Via Control Panel



1. Open the Control Panel
 - a) Open "Windows System" Folder
 - b) Using search function





2. Click "Uninstall a program"

Programs and Features

Control Panel > Programs > Programs and Features

Control Panel Home

View installed updates

Turn Windows features on or off

Install a program from the network

Uninstall or change a program

To uninstall a program, select it from the list and then click Uninstall, Change, or Repair.

4

Uninstall Change Repair

Name	Publisher	Installed On	Size	Version
EnPI Setup	DOE AMO	10/16/2017	7.96 MB	5.1.2

3

3. Find & Click "EnPI Setup"

4. Click "Uninstall"

DOE AMO Product version: 5.1.2
Size: 7.96 MB