



# U.S. Department of Energy Categorical Exclusion Determination Form

Submit by E-mail

Proposed Action Title: DSWR - Bi-Annual "Live Line" Maintenance Training

Program or Field Office: Western Area Power Administration, Desert Southwest Regional Office

Location(s) (City/County/State): Phoenix and Buckeye, Maricopa County, AZ

Proposed Action Description:

Western will be conducting bi-annual live-line maintenance training on various power lines west of Phoenix and Buckeye, AZ. Western crews will split in groups at different locations to replace porcelain insulators, replace spacer dampers (installed at various distance along the lines to provide proper separation and vibration damping), and repair conductor along the lines.

Work and set up will be conducted within the 100 ft. right-of-way surrounding the structure(s). The vehicles and equipment will be situated in an area 50' each side of centerline (100' wide total) - 75' ahead of each structure - and 75' back of each structure. For mid-span conductor repairs and spacer/damper work, bucket trucks must be set-up on flat ground. Ground disturbance may be required at some of these locations to create a level spot. However, crews will set-up bucket trucks on existing roads where-ever possible. Equipment used on all the designated locations will consist of crew trucks, special insulated bucket trucks, conductor carts, hotstick trailers, and dozer.

See Attached Continuation Sheet and Special Conditions

Categorical Exclusion(s) Applied:

B1.2 - Training exercises and simulations

For the complete DOE National Environmental Policy Act regulations regarding categorical exclusions, including the full text of each categorical exclusion, see Subpart D of 10 CFR Part 1021.

Regulatory Requirements in 10 CFR 1021.410(b): (See full text in regulation)

The proposal fits within a class of actions that is listed in Appendix A or B to 10 CFR Part 1021, Subpart D.

To fit within the classes of actions listed in 10 CFR Part 1021, Subpart D, Appendix B, a proposal must be one that would not: (1) threaten a violation of applicable statutory, regulatory, or permit requirements for environment, safety, and health, or similar requirements of DOE or Executive Orders; (2) require siting and construction or major expansion of waste storage, disposal, recovery, or treatment facilities (including incinerators), but the proposal may include categorically excluded waste storage, disposal, recovery, or treatment actions or facilities; (3) disturb hazardous substances, pollutants, contaminants, or CERCLA-excluded petroleum and natural gas products that preexist in the environment such that there would be uncontrolled or unpermitted releases; (4) have the potential to cause significant impacts on environmentally sensitive resources, including, but not limited to, those listed in paragraph B(4) of 10 CFR Part 1021, Subpart D, Appendix B; (5) involve genetically engineered organisms, synthetic biology, governmentally designated noxious weeds, or invasive species, unless the proposed activity would be contained or confined in a manner designed and operated to prevent unauthorized release into the environment and conducted in accordance with applicable requirements, such as those listed in paragraph B(5) of 10 CFR Part 1021, Subpart D, Appendix B.

There are no extraordinary circumstances related to the proposal that may affect the significance of the environmental effects of the proposal.

The proposal has not been segmented to meet the definition of a categorical exclusion. This proposal is not connected to other actions with potentially significant impacts (40 CFR 1508.25(a)(1)), is not related to other actions with individually insignificant but cumulatively significant impacts (40 CFR 1508.27(b)(7)), and is not precluded by 40 CFR 1506.1 or 10 CFR 1021.211 concerning limitations on actions during preparation of an environmental impact statement.

Based on my review of the proposed action, as NEPA Compliance Officer (as authorized under DOE Order 451.1B), I have determined that the proposed action fits within the specified class(es) of action, the other regulatory requirements set forth above are met, and the proposed action is hereby categorically excluded from further NEPA review.

NEPA Compliance Officer:

*Linda Marantz*

Date Determined:

10.8.13

# Western Area Power Administration, Desert Southwest Region DSWR – Bi-Annual “Live Line” Maintenance Training Continuation Sheet

## Project Description (Continued)

Western is required every two years “live line” training on energized lines applying two methods defined as the bare hand method and the hot stick method. The linemen in contact with conductor will be outfitted with a “hotsuit” and associated protective gear, and using insulated hotsticks made of fiberglass so linemen are isolated from energized circuit. By using live line techniques and safety to maintain transmission line infrastructure, circuits and transmission lines are able to remain in service while maintenance tasks are carried out.

Transmission Line	Structure No.	Land Ownership	PLSS
<b>MEDPES 500-kV</b>	225-3	Private	T4N R4W S24
	225-4	Private	T4N R3W S19
<b>MEDLIB - 345-kV</b>	225-3	Private	T2N R4W S10
	226-2	Private	T2N R4W S15
	226-5	Private	T2N R4W S14
	227-1	Private	T2N R4W S14
	228-2	Private	T2N R4W S23
	228-3	Private	T2N R4W S23
	228-4	Private	T2N R4W S24
	228-5	Private	T2N R4W S25
	229-2	Private	T2N R4W S25
	229-3	Private	T2N R4W S25
	229-4	Private	T2N R4W S25
	230-1	Private	T2N R4W S25
	230-3	DOD	T2N R3W S31
	230-4	DOD	T2N R3W S31
	230-5	DOD	T2N R3W S31
	231-1	DOD	T2N R3W S32
	231-4	DOD	T1N R3W S6
232-3	State	T1N R3W S5	
232-4	Private	T1N R3W S8	
<b>LIBPAD #1 - 230-kV</b>	105-4	Private	T2N R4W S16
	107-4	Private	T2N R4W S26
	108-3	Private	T2N R4W S35
	109-2	State	T1N R4W S2
	109-3	State	T1N R4W S2
	110-1	Private	T1N R4W S1
	110-4	BLM	T1N R4W S12
<b>LIBPAD #2 - 230-kV</b>	105-2	Private	T2N R4W S16
	109-1	State	T2N R4W S35
	110-2	BLM	T1N R4W S1
	111-1	BLM	T1N R4W S12

## Special Conditions:

### *Cultural Resources*

1. No blading/earthwork activities shall take place until Section 106 Consultation is completed.

### *Biological Resources*

1. No project activities will take place in the vicinity of a desert tortoise. All workers shall regularly check the project area, including beneath vehicles and equipment, for desert tortoise. At any time a desert tortoise is seen within or near any work area (including access roads, turnouts, staging areas, etc.), the project supervisor will be immediately notified and the tortoise allowed to leave the work area on its own. If a tortoise is located in imminent harm's way, Western Environmental Group (602-605-2640) will be contacted immediately. Desert tortoises may only be handled or moved by personnel as approved by Western Environmental Group, per the AGFD Guidelines for Handling Desert Tortoises (2007).

### *Compliance*

1. A copy of the Maricopa County Annual Dust Control Block Permit and a copy of the Dust Control Permit Application will need to be in every vehicle prior to commencing the dust generating operations during routine operation and maintenance activities.
2. Western will need to comply with the requirements stated in the Annual Dust Control Block Permit during dust generating operations during routine operation and maintenance activities.

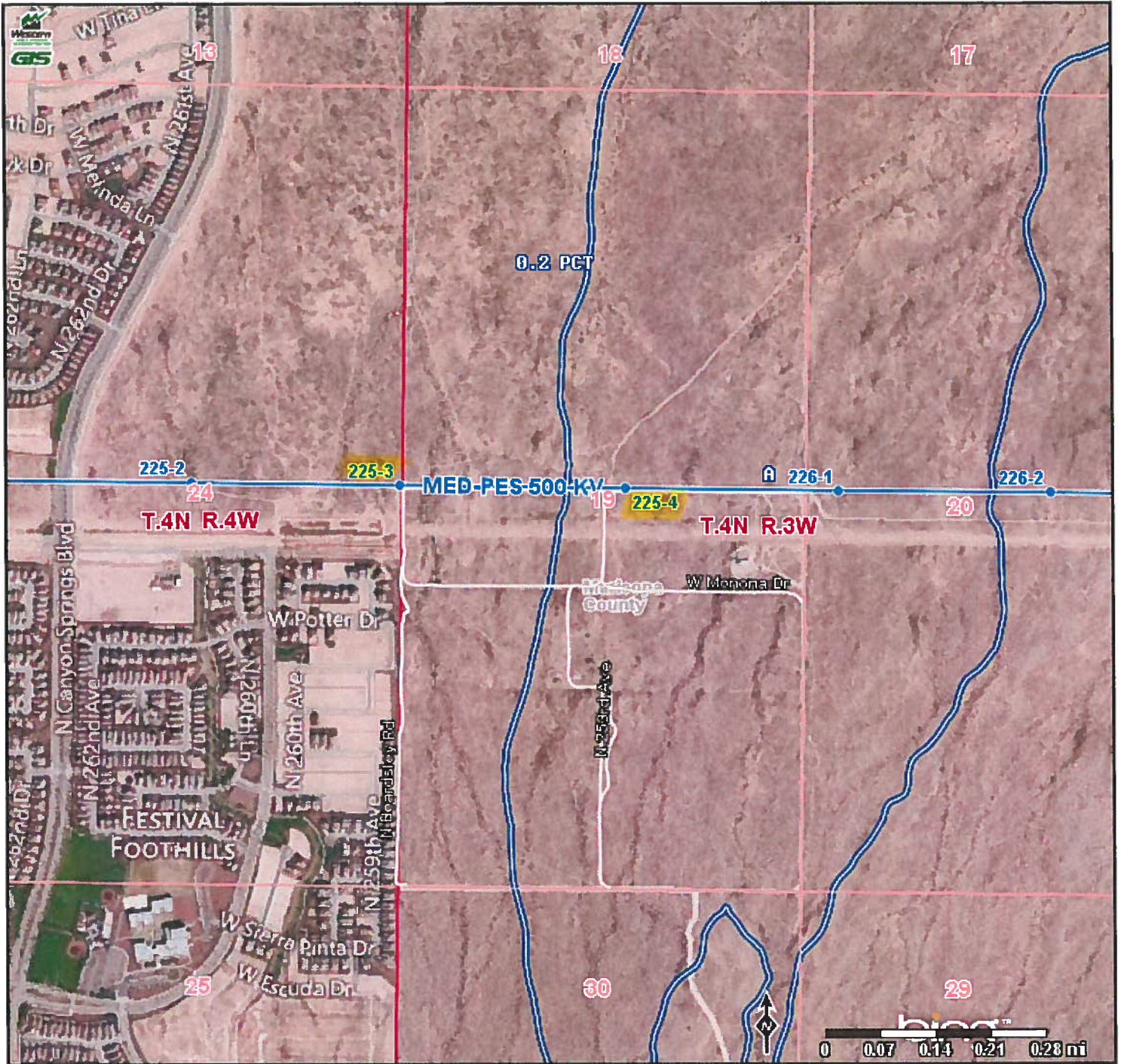
Checklist for Categorical Exclusion Determination, revised Nov. 2011

<b>Application of Categorical Exclusions (1021.410)</b>	Disagree	Agree	Unknown
(b)(1) The proposal fits within a class of actions that is listed in appendix A or B to subpart D.		X	
(b)(2) There are no extraordinary circumstances related to the proposal that may affect the significance of the environmental effects of the proposal, including, but not limited to, scientific controversy about the environmental effects of the proposal; uncertain effects or effects involving unique or unknown risks; and unresolved conflicts concerning alternate uses of available resources		X	
(b)(3) The proposal has not been segmented to meet the definition of a categorical exclusion. Segmentation can occur when a proposal is broken down into small parts in order to avoid the appearance of significance of the total action. The scope of a proposal must include the consideration of connected and cumulative actions, that is, the proposal is not connected to other actions with potentially significant impacts (40 CFR 1508.25(a)(1), is not related to other actions with individually insignificant but cumulatively significant impacts (40 CFR 1508.27(b)(7)), and is not precluded by 40 CFR 1506.1 or § 1021.211 of this part concerning limitations on actions during EIS preparation.		X	
<b>B. Conditions that are Integral Elements of the Classes of Actions in Appendix B. :</b>	NO	YES	UNKNOWN
(1) Threaten a violation of applicable statutory, regulatory, or permit requirements for environment, safety and health, or similar requirements of DOE or Executive Orders.	X		
(2) Require siting and construction or major expansion of waste storage, disposal, recovery, or treatment facilities (including incinerators), but the proposal may include categorically excluded waste storage, disposal, recovery, or treatment actions or facilities;	X		
(3) Disturb hazardous substances, pollutants, contaminants, or CERCLA-excluded petroleum and natural gas products that preexist in the environment such that there would be uncontrolled or unpermitted releases;	X		
(4) Have the potential to cause significant impacts on environmentally sensitive resources. An environmentally sensitive resource is typically a resource that has been identified as needing protection through Executive Order, statute, or regulation by Federal, state, or local government, or a federally recognized Indian tribe. An action may be categorically excluded if, although sensitive resources are present, the action would not have the potential to cause significant impacts on those resources (such as construction of a building with its foundation well above a sole-source aquifer or upland surface soil removal on a site that has wetlands). Environmentally sensitive	X		

resources include, but are not limited to:			
(i)	Property (such as sites, buildings, structures, and objects) of historic, archaeological, or architectural significance designated by a Federal, state, or local government, or property determined to be eligible for listing on the National Register of Historic Places;	X	
(ii)	Federally-listed threatened or endangered species or their habitat (including critical habitat) or Federally- proposed or candidate species or their habitat (Endangered Species Act); state-listed or state-proposed endangered or threatened species or their habitat; Federally-protected marine mammals and Essential Fish Habitat (Marine Mammal Protection Act; Magnuson-Stevens Fishery Conservation and Management Act); and otherwise Federally-protected species (such as under the Bald and Golden Eagle Protection Act or the Migratory Bird Treaty Act);	X	
(iii)	Floodplains and wetlands (as defined in 10 CFR 1022.4, —Compliance with Floodplain and Wetland Environmental Review Requirements: “Definitions,” or its successor);	X	
(iv)	Areas having a special designation such as Federally- and state-designated wilderness areas, national parks, national monuments, national natural landmarks, wild and scenic rivers, state and Federal wildlife refuges, scenic areas (such as National Scenic and Historic Trails or National Scenic Areas), and marine sanctuaries;	X	
(v)	Prime or unique farmland, or other farmland of statewide or local importance, as defined at 7 CFR 658.2(a), —Farmland Protection Policy Act: Definitions,   or its successor;	X	
(vi)	Special sources of water (such as sole-source aquifers, wellhead protection areas, and other water sources that are vital in a region); and	X	
(vii)	Tundra, coral reefs, or rain forests.; or	X	
(5)	Involve genetically engineered organisms, synthetic biology, governmentally designated noxious weeds, or invasive species, unless the proposed activity would be contained or confined in a manner designed and operated to prevent unauthorized release into the environment and conducted in accordance with applicable requirements, such as those of the Department of Agriculture, the Environmental Protection Agency, and the National Institutes of Health.	X	



# Desert Southwest Region



## Legend

- City
- County
- State
- Water
- Power Line
- Highway
- Road
- Interstate
- State Road
- County Road
- Local Road
- Trail
- Canal
- Ditch
- Drainage
- Well
- Structure
- Boundary
- Other

## Map Parameters

UTM ZONE 12, NAD83  
Scale 1:12,000

minx: 349663 maxx: 352756  
miny: 3725797 maxy: 3728595

6/24/2013 9:22 A.M.

**Western Area Power Administration**  
An agency of the U.S. Department of Energy



**This map and data are the property of WAPA/DOE and are intended for planning and analysis only. No reproduction or copying of this product is allowed without the sole consent of WAPA/DOE. To contact WAPA about this map, please call 1-800-336-7288.**

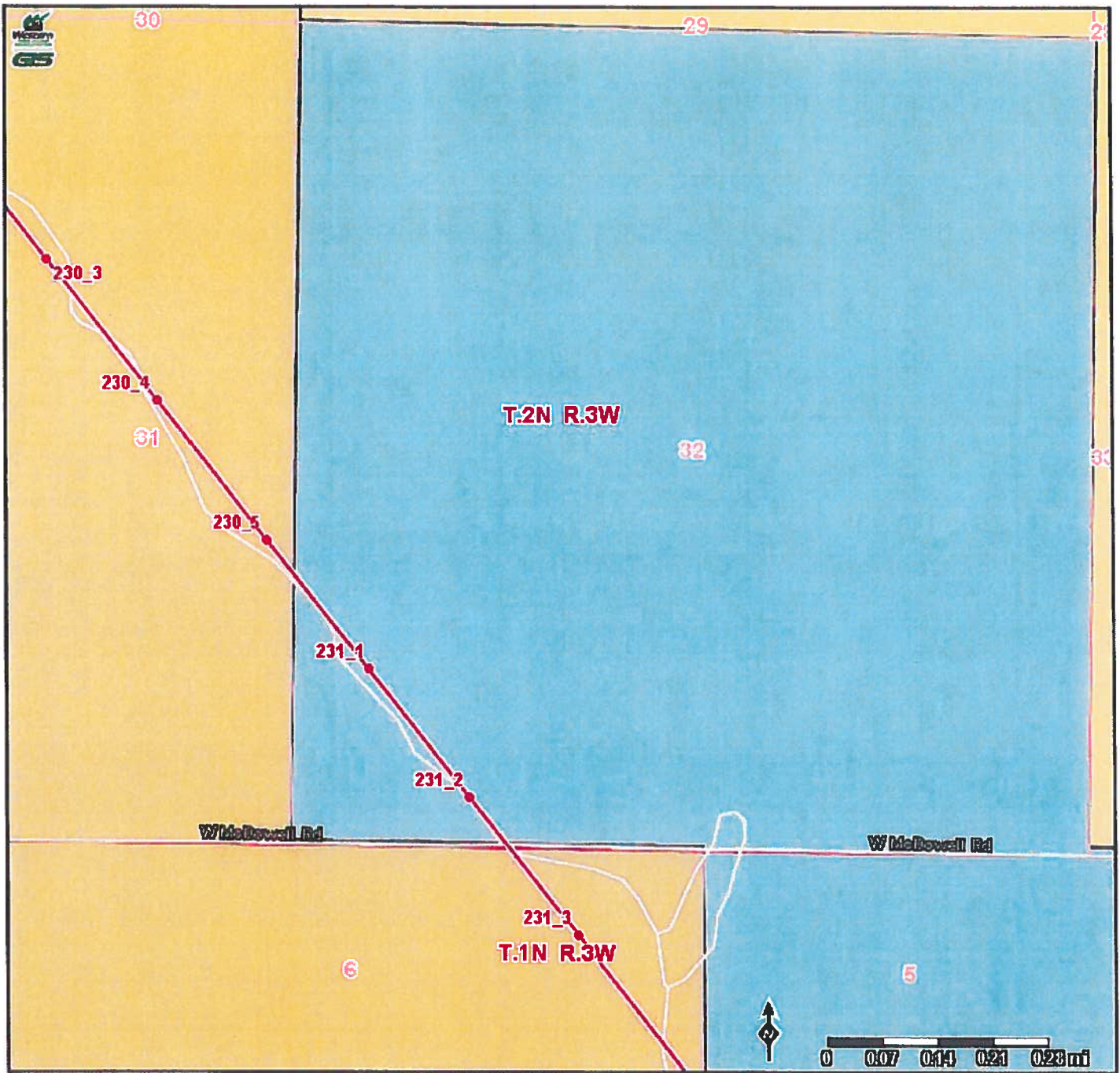
**MEDPES**







# Desert Southwest Region



## Legend

- Contour Boundary
- Intersecting Structure
- Prop. Subst. Boundary
- Contour 1 Line
- Contour 2 Line
- Intersecting 1 Line
- Intersecting 2 Line
- Intersecting 3 Line
- Intersecting 4 Line
- Intersecting 5 Line
- Intersecting 6 Line
- Intersecting 7 Line
- Intersecting 8 Line
- Intersecting 9 Line
- Intersecting 10 Line
- Intersecting 11 Line
- Intersecting 12 Line
- Intersecting 13 Line
- Intersecting 14 Line
- Intersecting 15 Line
- Intersecting 16 Line
- Intersecting 17 Line
- Intersecting 18 Line
- Intersecting 19 Line
- Intersecting 20 Line
- Intersecting 21 Line
- Intersecting 22 Line
- Intersecting 23 Line
- Intersecting 24 Line
- Intersecting 25 Line
- Intersecting 26 Line
- Intersecting 27 Line
- Intersecting 28 Line
- Intersecting 29 Line
- Intersecting 30 Line
- Intersecting 31 Line
- Intersecting 32 Line
- Intersecting 33 Line
- Intersecting 34 Line
- Intersecting 35 Line
- Intersecting 36 Line
- Intersecting 37 Line
- Intersecting 38 Line
- Intersecting 39 Line
- Intersecting 40 Line
- Intersecting 41 Line
- Intersecting 42 Line
- Intersecting 43 Line
- Intersecting 44 Line
- Intersecting 45 Line
- Intersecting 46 Line
- Intersecting 47 Line
- Intersecting 48 Line
- Intersecting 49 Line
- Intersecting 50 Line
- Intersecting 51 Line
- Intersecting 52 Line
- Intersecting 53 Line
- Intersecting 54 Line
- Intersecting 55 Line
- Intersecting 56 Line
- Intersecting 57 Line
- Intersecting 58 Line
- Intersecting 59 Line
- Intersecting 60 Line
- Intersecting 61 Line
- Intersecting 62 Line
- Intersecting 63 Line
- Intersecting 64 Line
- Intersecting 65 Line
- Intersecting 66 Line
- Intersecting 67 Line
- Intersecting 68 Line
- Intersecting 69 Line
- Intersecting 70 Line
- Intersecting 71 Line
- Intersecting 72 Line
- Intersecting 73 Line
- Intersecting 74 Line
- Intersecting 75 Line
- Intersecting 76 Line
- Intersecting 77 Line
- Intersecting 78 Line
- Intersecting 79 Line
- Intersecting 80 Line
- Intersecting 81 Line
- Intersecting 82 Line
- Intersecting 83 Line
- Intersecting 84 Line
- Intersecting 85 Line
- Intersecting 86 Line
- Intersecting 87 Line
- Intersecting 88 Line
- Intersecting 89 Line
- Intersecting 90 Line
- Intersecting 91 Line
- Intersecting 92 Line
- Intersecting 93 Line
- Intersecting 94 Line
- Intersecting 95 Line
- Intersecting 96 Line
- Intersecting 97 Line
- Intersecting 98 Line
- Intersecting 99 Line
- Intersecting 100 Line

## Map Parameters

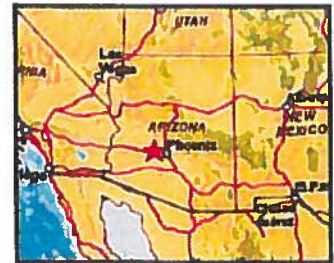
UTM ZONE 12, NAD83

Scale 1:12,000

minx: 350300 maxx: 353418  
 miny: 3703215 maxy: 3705892

7/22/2013 4:04 P.M.

**Western Area Power Administration**  
 An agency of the U.S. Department of Energy



**This map and data are the property of WAPA/DOE and are intended for planning and analysis only. No reproduction or copying of this product is allowed without the sole consent of WAPA/DOE. To contact WAPA about this map, please call 1-800-336-7288.**

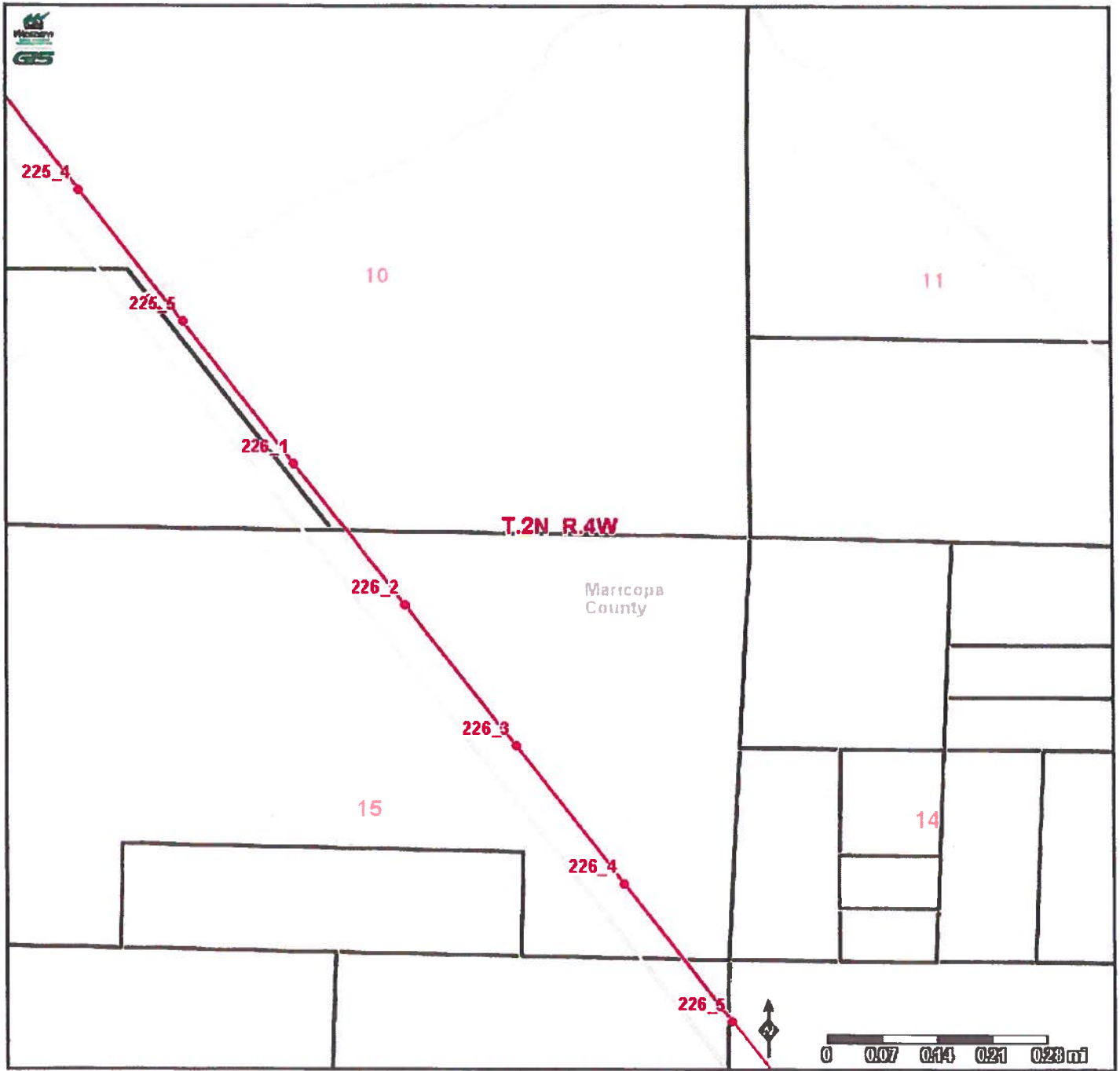
MEDLIB







# Desert Southwest Region



## Legend

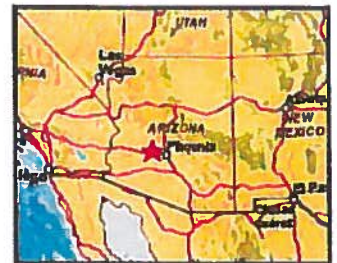
- Corridor Boundary
- Corridor Structure
- Power Station
- Corridor T-Line
- Corridor L-Line
- Corridor S-Line
- Distribution S-Line DC
- Distribution L-Line
- Distribution M-Line
- Distribution N-Line
- Distribution O-Line
- Distribution P-Line
- Distribution Q-Line
- Distribution R-Line
- Distribution S-Line
- Distribution T-Line
- Distribution U-Line
- Distribution V-Line
- Distribution W-Line
- Distribution X-Line
- Distribution Y-Line
- Distribution Z-Line
- Distribution AA-Line
- Distribution AB-Line
- Distribution AC-Line
- Distribution AD-Line
- Distribution AE-Line
- Distribution AF-Line
- Distribution AG-Line
- Distribution AH-Line
- Distribution AI-Line
- Distribution AJ-Line
- Distribution AK-Line
- Distribution AL-Line
- Distribution AM-Line
- Distribution AN-Line
- Distribution AO-Line
- Distribution AP-Line
- Distribution AQ-Line
- Distribution AR-Line
- Distribution AS-Line
- Distribution AT-Line
- Distribution AU-Line
- Distribution AV-Line
- Distribution AW-Line
- Distribution AX-Line
- Distribution AY-Line
- Distribution AZ-Line
- Distribution BA-Line
- Distribution BB-Line
- Distribution BC-Line
- Distribution BD-Line
- Distribution BE-Line
- Distribution BF-Line
- Distribution BG-Line
- Distribution BH-Line
- Distribution BI-Line
- Distribution BJ-Line
- Distribution BK-Line
- Distribution BL-Line
- Distribution BM-Line
- Distribution BN-Line
- Distribution BO-Line
- Distribution BP-Line
- Distribution BQ-Line
- Distribution BR-Line
- Distribution BS-Line
- Distribution BT-Line
- Distribution BU-Line
- Distribution BV-Line
- Distribution BW-Line
- Distribution BX-Line
- Distribution BY-Line
- Distribution BZ-Line
- Distribution CA-Line

**Map Parameters**  
 UTM ZONE 12, NAD83  
 Scale 1:12,000

minx: 345482 maxx: 348600  
 miny: 3709133 maxy: 3711810

7/22/2013 3:59 P.M.

**Western Area Power Administration**  
 An agency of the U.S. Department of Energy

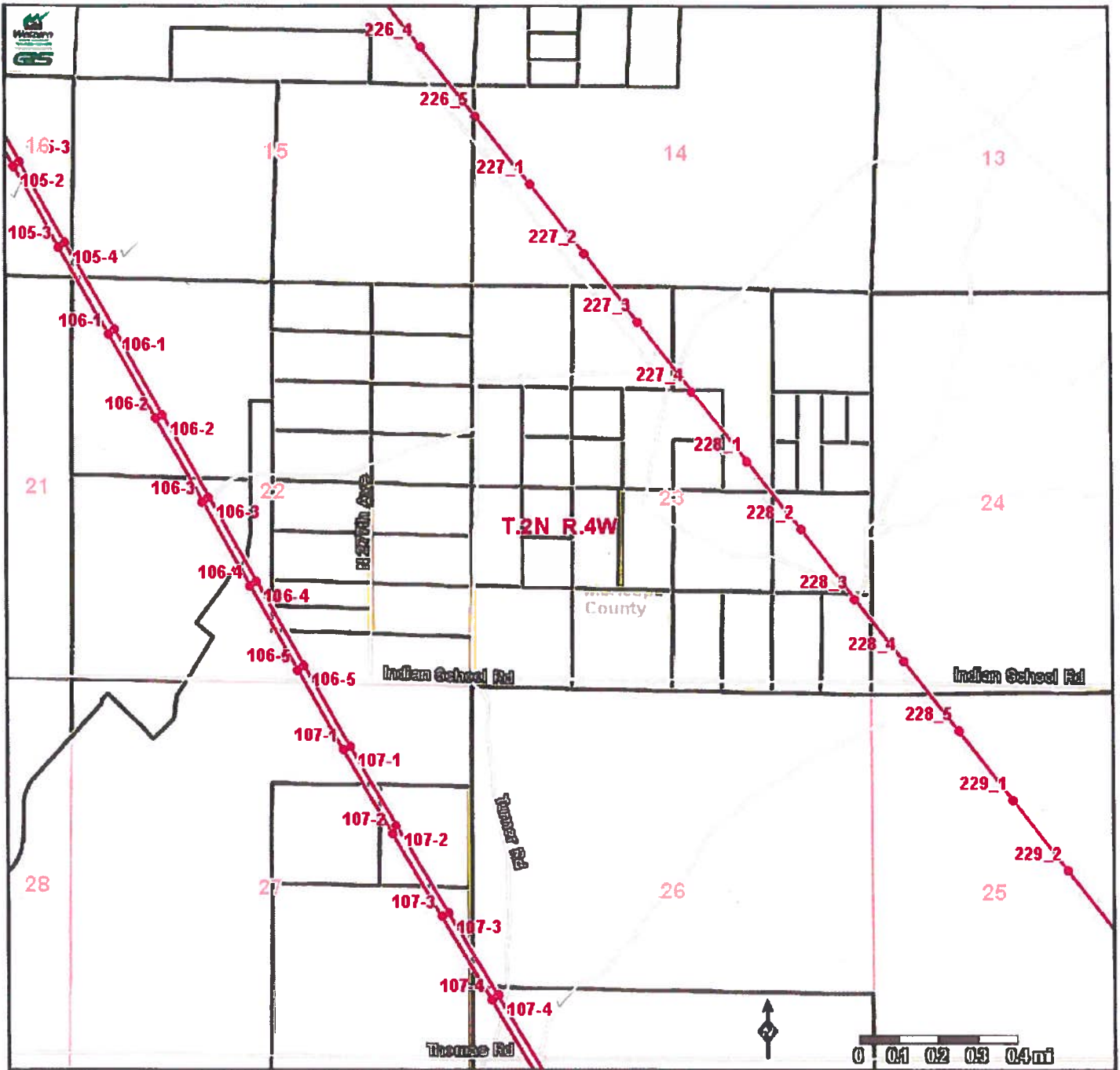


This map and data are the property of WAPA/DOE and are intended for planning and analysis only. No reproduction or copying of this product is allowed without the sole consent of WAPA/DOE. To contact WAPA about this map, please call 1-800-336-7288.

MEDLIB



# Desert Southwest Region



## Legend

- Concrete Structure
- Interceptor Structure
- Distribution Box
- Concrete T-Line
- Concrete T-Line DC
- Interceptor T-Line
- Interceptor T-Line DC
- Distribution Line
- Interceptor T-Line
- Interceptor T-Line DC
- SAUCER HOV (HOV 2+)
- HOV 2+ (HOV 2+)
- HOV 3+ (HOV 3+)
- HOV 4+ (HOV 4+)
- HOV 5+ (HOV 5+)
- HOV 6+ (HOV 6+)
- HOV 7+ (HOV 7+)
- HOV 8+ (HOV 8+)
- HOV 9+ (HOV 9+)
- HOV 10+ (HOV 10+)
- HOV 11+ (HOV 11+)
- HOV 12+ (HOV 12+)
- HOV 13+ (HOV 13+)
- HOV 14+ (HOV 14+)
- HOV 15+ (HOV 15+)
- HOV 16+ (HOV 16+)
- HOV 17+ (HOV 17+)
- HOV 18+ (HOV 18+)
- HOV 19+ (HOV 19+)
- HOV 20+ (HOV 20+)
- HOV 21+ (HOV 21+)
- HOV 22+ (HOV 22+)
- HOV 23+ (HOV 23+)
- HOV 24+ (HOV 24+)
- HOV 25+ (HOV 25+)
- HOV 26+ (HOV 26+)
- HOV 27+ (HOV 27+)
- HOV 28+ (HOV 28+)
- HOV 29+ (HOV 29+)
- HOV 30+ (HOV 30+)
- HOV 31+ (HOV 31+)
- HOV 32+ (HOV 32+)
- HOV 33+ (HOV 33+)
- HOV 34+ (HOV 34+)
- HOV 35+ (HOV 35+)
- HOV 36+ (HOV 36+)
- HOV 37+ (HOV 37+)
- HOV 38+ (HOV 38+)
- HOV 39+ (HOV 39+)
- HOV 40+ (HOV 40+)
- HOV 41+ (HOV 41+)
- HOV 42+ (HOV 42+)
- HOV 43+ (HOV 43+)
- HOV 44+ (HOV 44+)
- HOV 45+ (HOV 45+)
- HOV 46+ (HOV 46+)
- HOV 47+ (HOV 47+)
- HOV 48+ (HOV 48+)
- HOV 49+ (HOV 49+)
- HOV 50+ (HOV 50+)
- HOV 51+ (HOV 51+)
- HOV 52+ (HOV 52+)
- HOV 53+ (HOV 53+)
- HOV 54+ (HOV 54+)
- HOV 55+ (HOV 55+)
- HOV 56+ (HOV 56+)
- HOV 57+ (HOV 57+)
- HOV 58+ (HOV 58+)
- HOV 59+ (HOV 59+)
- HOV 60+ (HOV 60+)
- HOV 61+ (HOV 61+)
- HOV 62+ (HOV 62+)
- HOV 63+ (HOV 63+)
- HOV 64+ (HOV 64+)
- HOV 65+ (HOV 65+)
- HOV 66+ (HOV 66+)
- HOV 67+ (HOV 67+)
- HOV 68+ (HOV 68+)
- HOV 69+ (HOV 69+)
- HOV 70+ (HOV 70+)
- HOV 71+ (HOV 71+)
- HOV 72+ (HOV 72+)
- HOV 73+ (HOV 73+)
- HOV 74+ (HOV 74+)
- HOV 75+ (HOV 75+)
- HOV 76+ (HOV 76+)
- HOV 77+ (HOV 77+)
- HOV 78+ (HOV 78+)
- HOV 79+ (HOV 79+)
- HOV 80+ (HOV 80+)
- HOV 81+ (HOV 81+)
- HOV 82+ (HOV 82+)
- HOV 83+ (HOV 83+)
- HOV 84+ (HOV 84+)
- HOV 85+ (HOV 85+)
- HOV 86+ (HOV 86+)
- HOV 87+ (HOV 87+)
- HOV 88+ (HOV 88+)
- HOV 89+ (HOV 89+)
- HOV 90+ (HOV 90+)
- HOV 91+ (HOV 91+)
- HOV 92+ (HOV 92+)
- HOV 93+ (HOV 93+)
- HOV 94+ (HOV 94+)
- HOV 95+ (HOV 95+)
- HOV 96+ (HOV 96+)
- HOV 97+ (HOV 97+)
- HOV 98+ (HOV 98+)
- HOV 99+ (HOV 99+)
- HOV 100+ (HOV 100+)

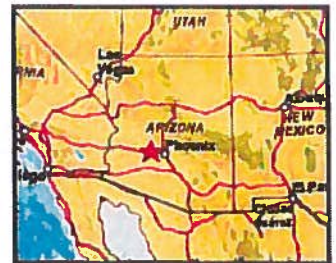
## Map Parameters

UTM ZONE 12, NAD83  
Scale 1:24,000

minx: 344592 maxx: 350828  
miny: 3705135 maxy: 3710489

7/22/2013 3:27 P.M.

**Western Area Power Administration**  
An agency of the U.S. Department of Energy



This map and data are the property of WAPA/DOE and are intended for planning and analysis only. No reproduction or copying of this product is allowed without the sole consent of WAPA/DOE. To contact WAPA about this map, please call 1-800-336-7288.

LIBPAD

