



**Office of Legacy Management
United States Department of Energy
October - December 2003**

PROGRAM UPDATE

THE OFFICE OF LEGACY MANAGEMENT

The Office of Legacy Management (LM) has been established and is officially up and running as of December 15, 2003. Secretary Abraham has appointed Michael W. Owen, most recently Director of the Office of Worker and Community Transition, to head up this new Office. The Office of Legacy Management will be responsible for the long-term care of legacy liabilities of former nuclear weapons production sites following completion of the environmental management cleanup effort. In order to consolidate programs of a similar nature, the Office of Worker and Community Transition and portions of the Office of Environmental Management have been incorporated into LM.

"The establishment of the Office of Legacy Management demonstrates the Department's continued commitment to manage sites where active remediation has been completed, as well as our commitment to the contractor work force that will be affected by changing Departmental missions" Secretary of Energy Spencer Abraham said. "The establishment of this new office is a significant step to ensuring the long-term protection of human health and the environment."

To ensure continuity of expertise, LM personnel will be composed of staff formerly of the Office of Worker and Community Transition; personnel from the Environmental Management's Office of Long-Term Stewardship; around 16 Grand Junction Office personnel in Grand Junction Colorado; and Environmental Management-funded personnel located at the National Energy Technology Laboratory in Morgantown, West Virginia and Pittsburgh, Pennsylvania.





The mission of each component of LM follows:

Office of Strategic Materials (LM-4)

LM-4 assists in site management of legacy strategic materials and all the Department of Energy (DOE) and Nuclear Safety Administration Program Managers in the acquisition, use, and return of strategic materials from the Department of Defense National Stockpile.

Office of Stakeholder Relations (LM-5)

LM-5 coordinates and integrates activities with external organizations by working closely with Congressional, state officials, DOE's Office of Public Affairs and others to promote LM policies, programs and initiatives through communication and interaction with stakeholders.

Office of Budget (LM-6)

LM-6 ensures that adequate funding is available to perform the functions of LM and that funds are distributed, expended, and recorded.

Office of Business and Resource Management (LM-10)

LM-10 provides centralized support to offices within LM to enable the LM offices to fulfill their missions and functions. LM-10 also manages the creation, maintenance, storage, distribution, and retrieval of LM information and records.

Office of Legacy Benefits, Work Force Restructuring and Labor Management Relations (LM-20)

LM-20 represents DOE when coordinating with outside agencies, national labor unions, and stakeholders on contractor work force issues regarding post-closure benefits, work force restructuring/transition, and labor relations.

Office of Property Management and Community Assistance (LM-30)

LM-30 manages real and personal property transferred to LM and provides community assistance in order to mitigate the impacts of restructuring or closure at DOE sites.

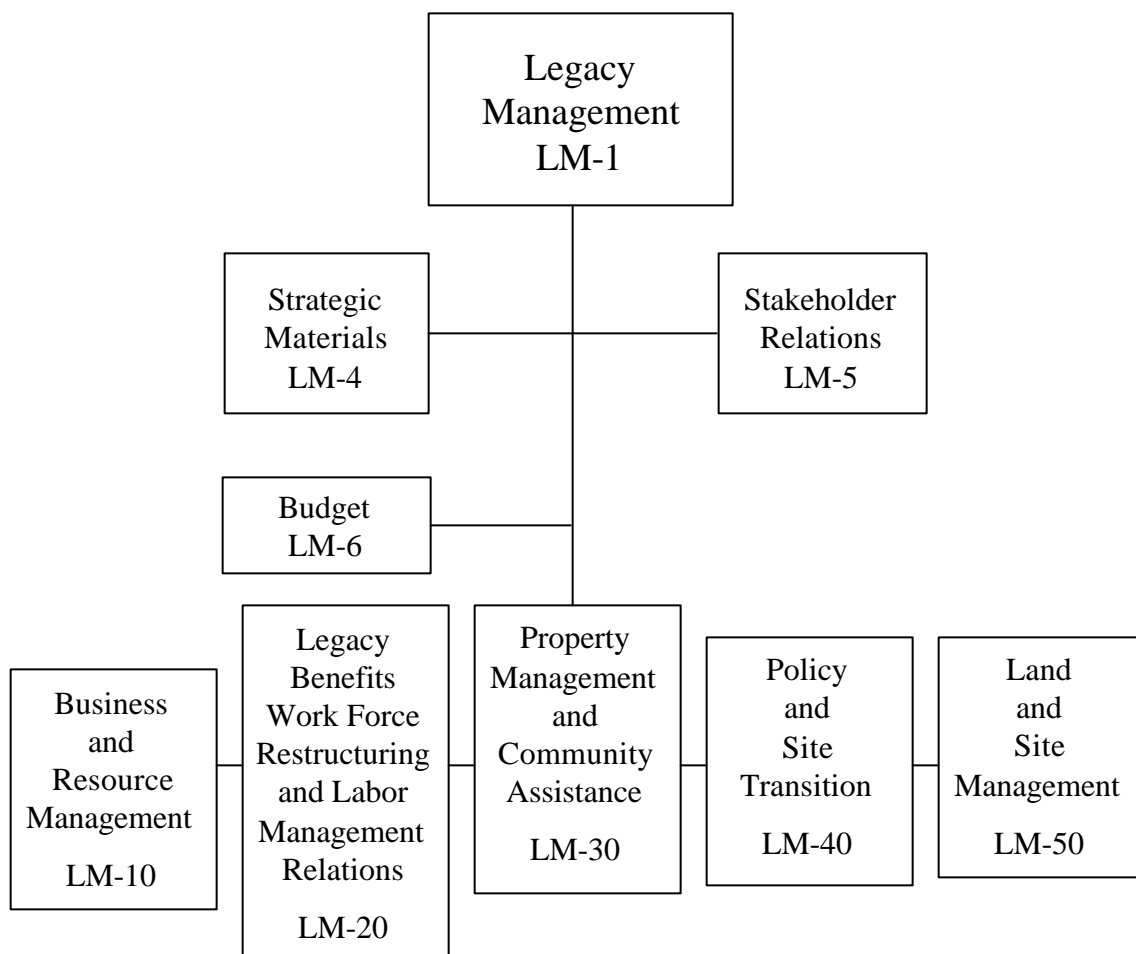


Office of Policy and Site Transition (LM-40)

LM-40 develops and oversees implementation of DOE policies to ensure a smooth and efficient transfer of physical sites, workers, and site records from DOE’s Office of Environmental Management to the LM.

Office of Land and Site Management (LM-50)

LM-50 implements long-term surveillance and maintenance projects at sites transferred to LM to ensure sustainable protection of human health and the environment.



This publication will provide LM stakeholders with highlights of major activities in LM programs. If you have any question regarding this organization, please e-mail us at lm@hq.doe.gov.



This page intentionally left blank.



REQUEST FOR LM PUBLIC DOCUMENT(S):

Name: _____

Organization: _____

Position: _____

Street Address: _____

City, State and Zip Code: _____

Phone Number: _____

Fax Number: _____

E-mail Address: _____

DOCUMENTS REQUESTED:

1. _____

2. _____

3. _____

4. _____

FAX OR MAIL TO:

Ms. Sheila Dillard
U.S. Department of Energy
LM-5/FORS
1000 Independence Avenue, SW
Washington, DC 20585